









Private Terrace in 3rd floor flats

- Ground+3 Floor Buildings - Ergonomic built design with 4 spacious apartments per floor where every room & bathroom has natural light & ventilation



- Club House with Gymnasium & Indoor Games i.e. Table-tennis, Chess & Carrom; Swimming Pool



- 15000 sq. ft. Air-conditioned Amenity Hall & Open Terrace



AMENITIES



- Multi Speciality - Central Hospital



- Grand Main Gate & Well Demarcated Area with compound wall



- Poddar Brio International School







1RK A Type







EXCLUSIVE
1, 2 & 3 BHK BUDGET HOMES

Nana-Nani Park, Badminton & Basketball Court,
Football, Cricket Ground & Swimming Pool



PODDAR
EVERGREENS
BADLAPUR EAST







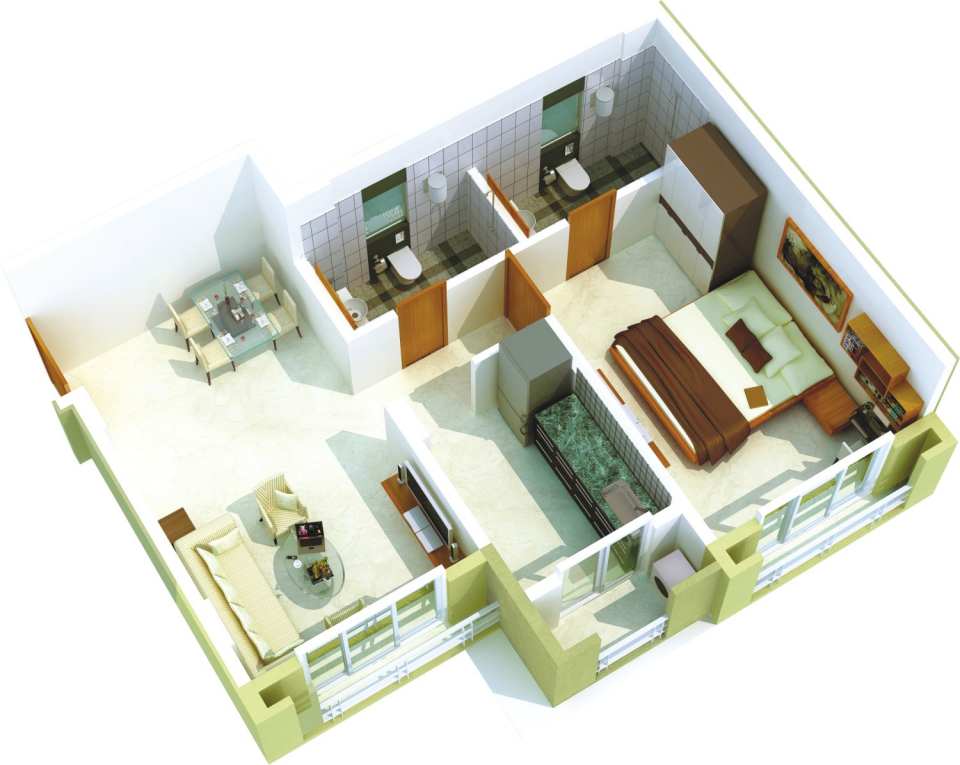
- All apartments of Phase-I & substantial nos of apartments of Phase-II are sold out.
- Project Approved & Home Loan Available for all from leading banks/institutions.
- Well designed earthquake-proof RCC construction using aluminium shuttering technology.
- Vastu & energy enhanced site.
- Low maintenance cost & property taxes.
- 24x7 security & facility management.
- Solar street-lights on main roads.
- Ample drinking water supply sanctioned and commissioned for the site.

- A separate electrical connection and an MSEB transformer has been sanctioned & commissioned at the site.
- Ample parking space for two & four wheelers.
- Retail shops are available for necessity, utility & luxury household items.
- Complex bus service available between Badlapur railway station (East) to Poddar Evergreens.
- Proposed school: Construction of well reputed Poddar pre primary, primary & secondary school has commenced.
- Six Lane Road widening work between Kalyan - Ambernath is completed by MMRDA & work is in progress between Ambernath - Badlapur - Karjat.
- Central Railway has announced the increase in frequency of Local Trains between C.S.T. - Badlapur.
- Good connectivity with Navi Mumbai area; only 30-35 minutes drive from I.T. Park, Mhape.

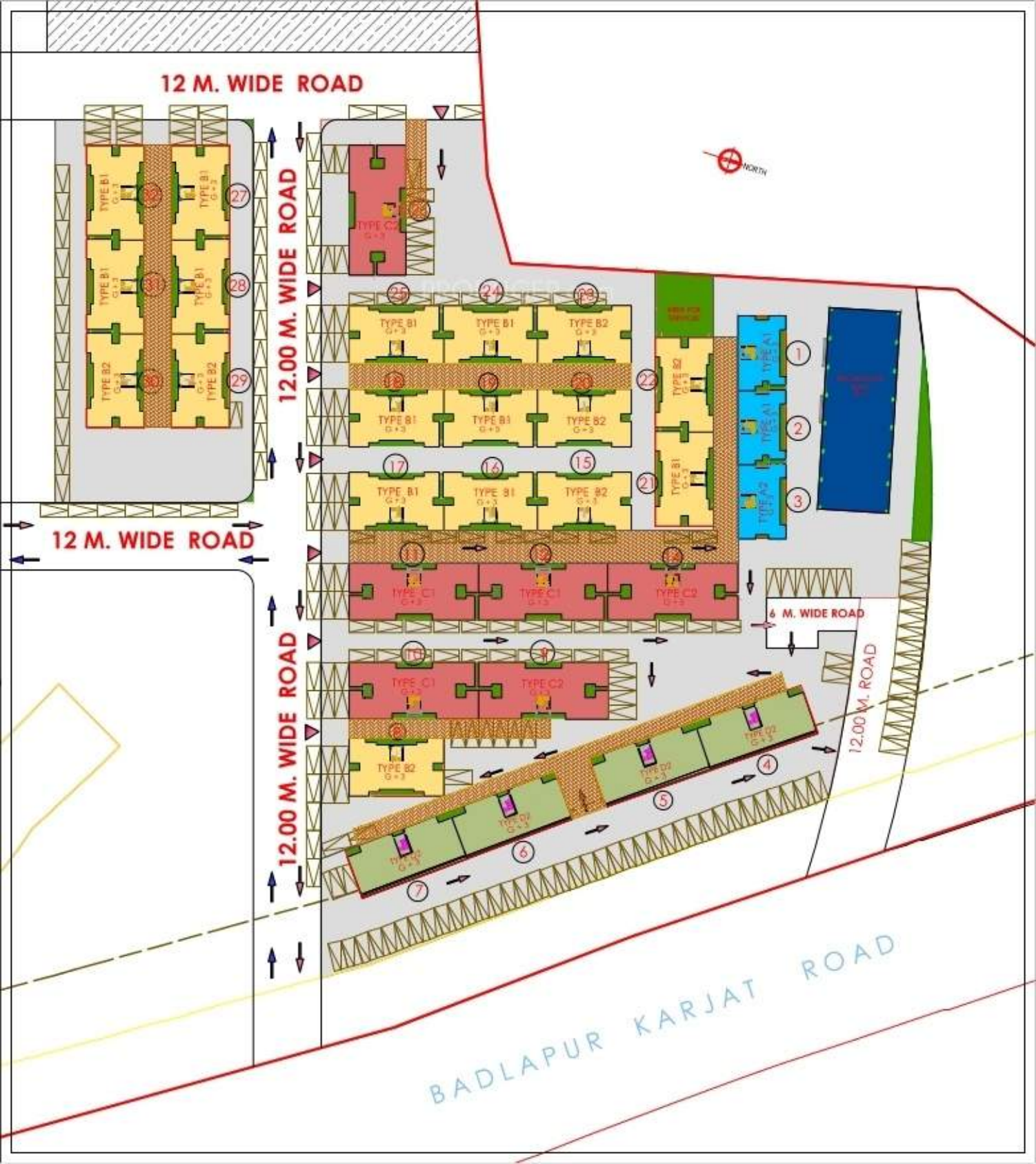


1 RK Unit



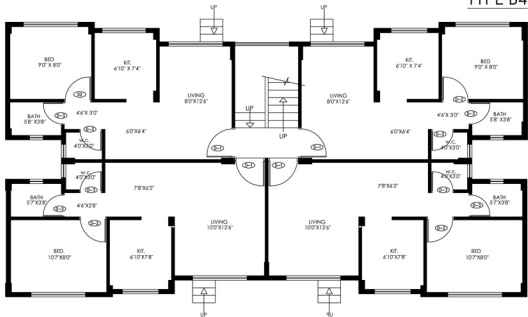








TYPE B4



GROUND FLOOR PLAN

PODDAR EVERGREENS

