



**URBAN  
RISE**

1, 1.5, 2 BHK HOMES  
PISSOLI

# Project Elevation



# About VTP Group



UNLIMIT YOUR THOUGHTS



VTP Group is a dynamic company that has been raising the benchmark in quality and success for over 25 years.

With a modest start in the cement and steel industry, the company has grown to become the largest distributor of cement and steel in Maharashtra.

The company has an established presence in the Hospitality industry with Cypress, a 4 star luxury Hotel in Pune.

VTP Group has two Real Estate arms making their mark in the construction world:

- Urban Homes - Focusing on complete quality homes in a budget.
- Urban Lifestyle - Crafting opulent signature homes .



Urban Lifestyle is the premium construction brand of VTP Group, setting the standards high with spacious, contemporary signature spaces that are elegance and luxury personified. The unparalleled creations of Urban Lifestyle are aimed to give you more than your expectations, with the promise of quality and opulence





Urban Homes is the construction brand of VTP Group that creates living spaces with modern concepts that are both- stylish and comfortable. Giving you a world of happiness, all in a budget without compromising on the commitment of quality





**PISOLI**

# Location Map



# Why Pisoli?



- Pisoli has the advantage of being well connected to the key localities in Pune via various local and interstate highways and expressways .while retaining its sub line serenity due to the dense green cover protected by government regulation
- Proximity to Wanoware ,NIBM, Fakri Hills, Bibewadi ,Marketyard that residents in Pisoli have access to all necessities of daily living
- It is Ideal residential real estate location ,one of the few in the more central parts of Pune ,which still offers parts the city laid back natural charm at affordable rates.
- Home buyers as well as investors' are very enthusiastic about this location ,since it offers cost effective housing option to employees from the close by IT / ITeS Hubs like Magarpatta ,SP Info city
- Business hubs like Marketyard and Camp are close by

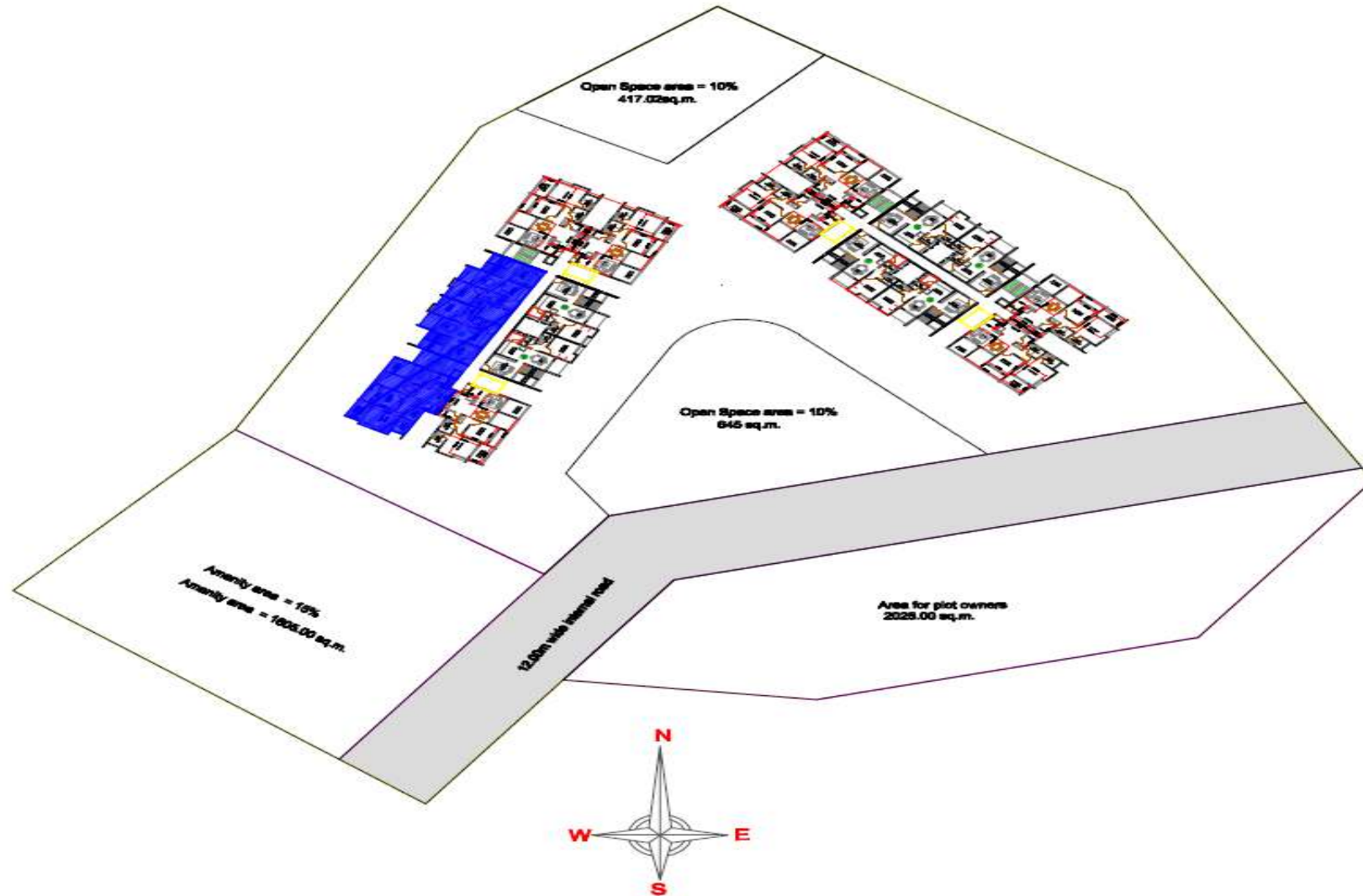


# Distance Chart

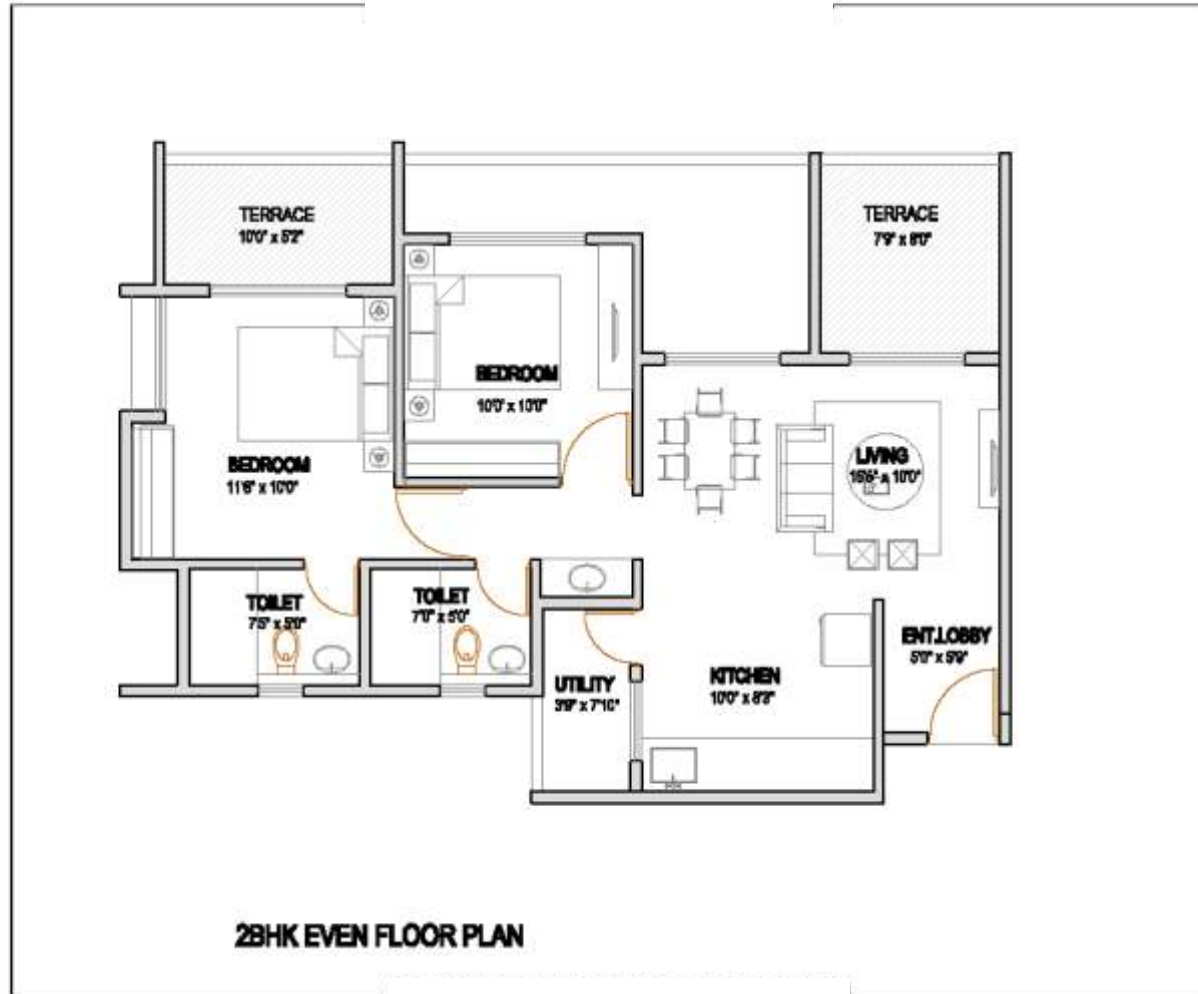
- Orchid Palace 4.0 Kms
- Corianthien Club 3.0 Kms
- Mumbai- Bangalore Expressway 4.0 Kms
- Hyderabad (Solapur) Highway 8.0 Kms
- MG Road, Camp 8.0 Kms
- Kirloskar Oil Engg 5.0 Kms
- Shapoorji Palanjee (SP) Infocity 7.0 Kms
- Magarpatta IT Park 9.0 Kms
- Hinjewadi IT Park 23.0 Kms
- Pune Railway Station 12.0 Kms
- Pune Airport 22.0 Kms



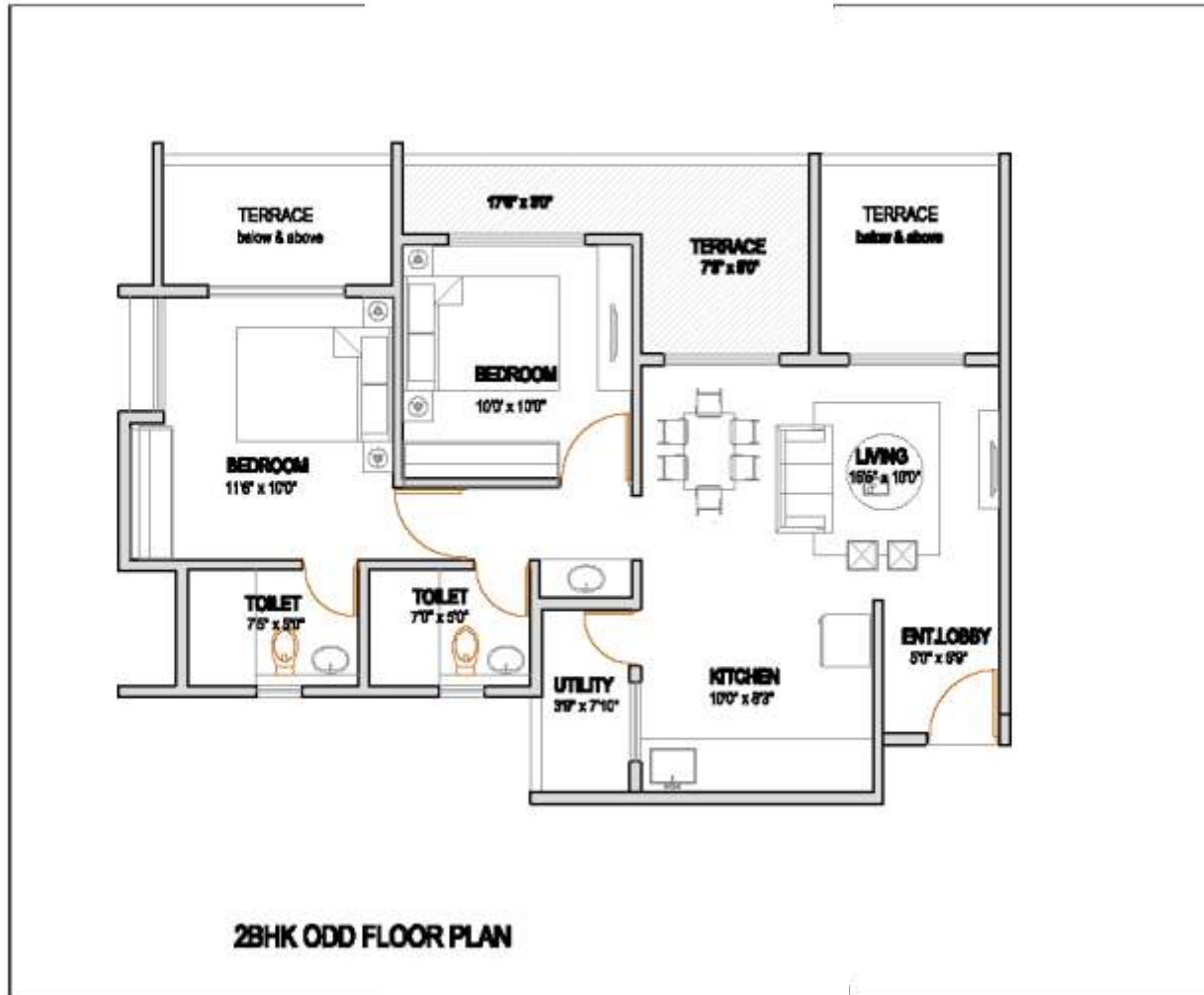
# Layout



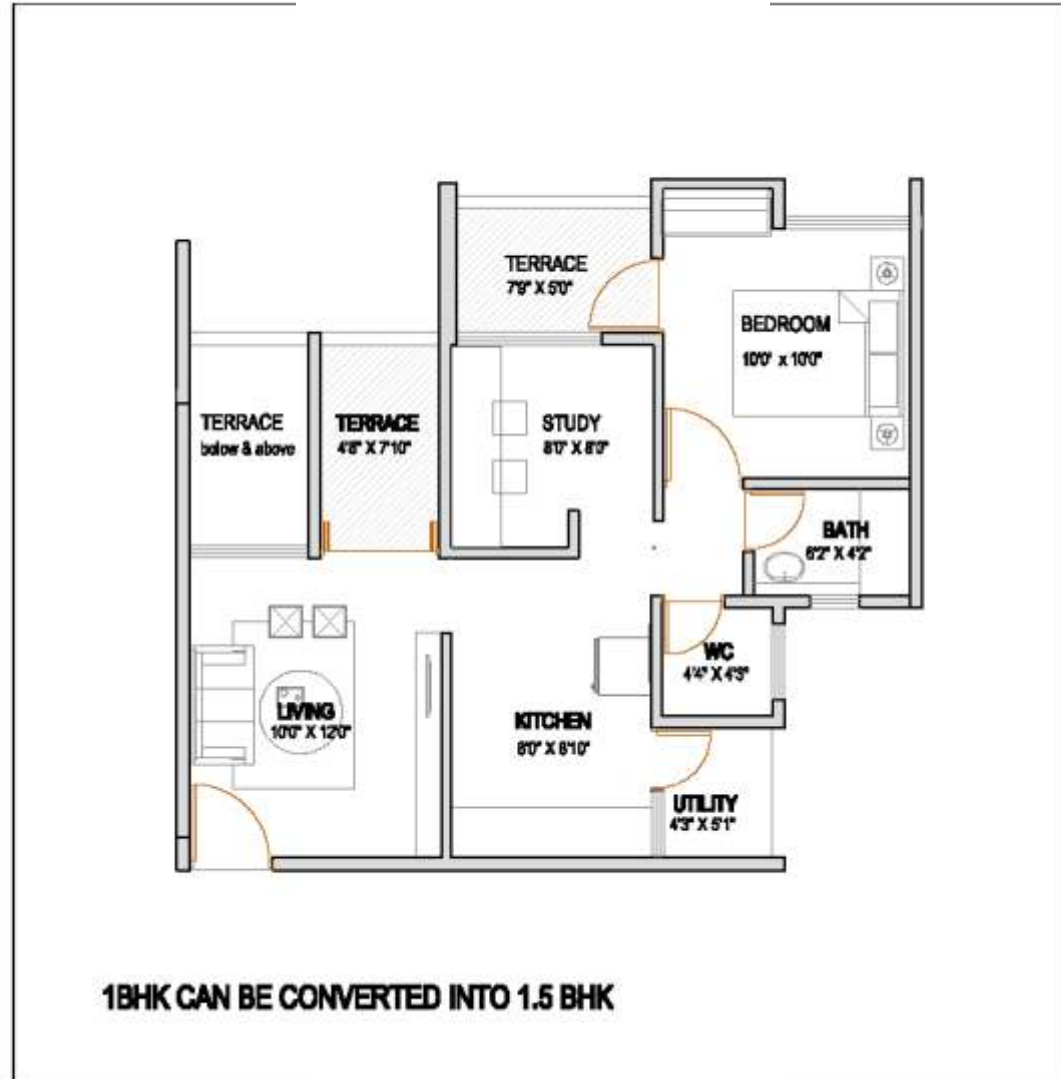
# 2BHK -Floor Plan



# Odd Floor



# 1BHK-Floor Plan



# Specifications



## Flooring

Living, Dining, Kitchen and All bedrooms    Vitrified Tiles ( 600mmx600mm)  
Dry Balcony - Anti-skid ceramic Tiles  
Terraces - Anti-skid ceramic Tiles

## Toilets

All toilets  
CP fittings -Jaquar/ equivalent make fittings in all toilets  
Flooring -Tiles for all toilets(12\*12)  
Designer Decorative dado Tiles up-to 7 ft

## Doors

Decorative Laminated main entrance door  
Safety Lock and Name Plate  
Internal doors - Laminated Flush door.

## Windows

Granite sill on bottom for all windows with mosquito net  
Two & three track anodized aluminum sliding windows and safety grills

## Kitchen

Straight Granite Kitchen platform  
S.S. Sink  
ceramic/glazed tiles above kitchen platform 2ft

## Electrification

Switches - Anchor / equivalent modular switches.  
Concealed copper wiring with M.C.B.  
Adequate electric points with TV & Telephone points in living room.

## Power back-up

100% DG Back-up for lifts & Common area.

## Plumbing

Concealed plumbing.

## Wall finishes

Interior- OBD Paints for internal wall.  
Exterior - Superior quality water proof paint.

Video door phone with intercom.

# AMENITIES

- Entrance Gate with security cabin.
- Club House.
- Gymnasium
- Garden.
- Jogging track.
- Children play area.
- Multi purpose Hall
- Senior citizen area
- Relaxing area with benches.
- Rain Water Harvesting.
- Security & Safety
- Fire fighting system for each building.
- 24\*7 Security system with intercom facility
- Decorative entrance lobby
- Automatic lift
- Solar connection to master toilet



# Credits

## Architect

- Dwp Entrics Pvt. Ltd.

## Structural Consultant

- Design Werkz Engineering Pvt. Ltd.

## Mep Consultant

- Epsilon Design Consultancy

## Brand Consultant

- The Circus Works | [thecircusworks.com](http://thecircusworks.com)

## Website

- [www.vtpgroup.in](http://www.vtpgroup.in)

## For Sales/Support Assistance

- 7774848484 / 7775858585
- [sales@vtpgroup.in](mailto:sales@vtpgroup.in)

## Regd. Office

VTP Group

Off no. 201-204, Nyati Millenium, Next to Saraswat Bank, Ahead of Neco Garden, Dutta Mandir Chowk, Viman Nagar, Pune- 411014



UNLIMIT YOUR THOUGHTS

The content in this presentation is purely conceptual and has no legal bindings. Urban Soul reserves the right to amend the same with prior notice.

The images, layouts and maps presented are conceptual. They may not be scalable. All rights reserved, no part of the presentation maybe reproduced, stored in a retrieval system or transmitted in any form or by any means, electronic, mechanical, photocopying, recording or otherwise without the prior permission of Urban Soul. Urban Soul is a registered trademark of Urban Homes. All other trademarks are the property of their respective owners.





**Thank you**