



Shankh  
Mani





DISCLAIMER: All information, features and offerings in this brochure are subject to change without notice. Photographs used in this brochure are for illustrative purposes only and may not bear resemblance to actual features/offerings. This brochure is not a legal offer or document.



Where life's chakras flow





## Extravagant comfort and endless skies

Shankh Mani is a serene abode where you and your family can enjoy the lifestyles you've always wanted. Located in Tollygunge, it enjoys the advantage of being connected via excellent bus, metro and rail links. It sits in a haven of calmness, under azure skies.

Conceived as the perfect home for those who know what they want from life, Shankh Mani is a perfect combination of convenience and luxury.

It's where your dreams of tomorrow will be dreamed of today.







## *The* sound of dreams

Living at Shankh Mani is so well-planned, it sounds too good to be true. Built on approx 1.4 acres of land, it houses more than 100 units in 3 towers of G+12 storeys each. The units range in size from 1270 to 2032 sq ft. Almost all the homes are south-facing and feature unique facilities designed to make a difference to the lives of the residents.

Thoughtful features such as Kids' Bus Waiting and Grandparents' Sitting areas enhance the human quotient of Shankh Mani.

Other attractive points include terraced flats on certain levels, a man-made waterbody and a landscaped promenade.



## Life amidst soft clouds of nothingness

Living at Shankh Mani means enjoying peace and tranquility in the heart of the city. You'll be spoiled for choice for activities to enjoy.

Just take a look at some of the amazing facilities and amenities in store.



DISCLAIMER: All information, features and offerings in this brochure are subject to change without notice. Photographs used in this brochure are for illustrative purposes only and may not bear resemblance to actual features/offerings. This brochure is not a legal offer or document.





## Features & Conveniences

- Air-conditioned party hall
- Air-conditioned gymnasium
- Steam room
- Swimming pool
- Kids' pool
- Barbeque@poolside
- Fountain court
- Chess court
- Lotus promenade
- Kids' play area
- Library
- Games room
- Crescent terrace
- 24x7 water supply
- ION filtration plant
- 24x7 surveillance
- Power back-up



# Specifications

## DOORS

- Rooms fitted with 35 mm thick flush teak doors finished on both sides (except for kitchens and toilets)
- Shutters hung from brass barrel latches
- Night latches and magic eyes for entrance doors
- Mortise locks and doorstoppers on bedroom and kitchen doors
- Bathroom latches on toilet doors

## FLOORS

- Vitrified tiles in living and dining areas
- Bedrooms finished with quality vitrified tiles
- Ceramic tiles in bathrooms
- Kitchen floor finished with quality vitrified tiles
- Staircases, including landings and corridors, finished with polished Indian marble/Kota
- Lift lobbies feature quality Indian marble/vitrified tiles with matching skirtings
- Other common areas floored with screed concrete

## SANITARYWARE

- White porcelain sanitaryware of Parryware/Hindware or equivalent brands

## CP FITTINGS

- Concealed piping system for hot and cold water lines
- Geysers in all bathrooms
- Shower glass partition in master bathroom
- Sleek Jaquar fittings or of a similar brand
- Matching glass mirrors, shelves, soap trays and towel rails

## KITCHEN

- Granite top cooking platforms with one stainless steel sink and draining board in each flat
- Kitchens to be equipped with water filters
- Dual source of water supply



## WINDOWS

- Feature a standard section of anodised/powder coated aluminium or UPVC casements with glass inserts and matching fittings

## WALLS

- External walls completed in cement and sand plaster with cement paint and/or texture finish and glazing as per architectural scheme
- Internal walls finished in cement and sand plaster with neat POP punning
- Kitchens feature ceramic tiles up to 2 ft in height above the kitchen counter
- Bathrooms completed with designer ceramic tiles up to door height

## ELECTRICAL WIRING & FITTINGS

- Totally concealed wiring for all rooms
- Air conditioning plug points in all bedrooms and living rooms
- Light and plug points in dining/drawing and bedrooms as per architectural scheme
- Video door phones at the main entrance doors
- Telephone points in living rooms and all bedrooms
- Generator power during power failure for lighting and domestic purposes to the extent of 1 watt/sq ft of built up area in each unit
- Security systems: CCTV monitoring for all common areas
- Geyser points in all toilets and kitchens
- Compatible wiring that can be hooked up to a cable television network with a connection thereof in living rooms and all bedrooms

## FIRE SUPPRESSION & DETECTION

- Provision for firefighting system

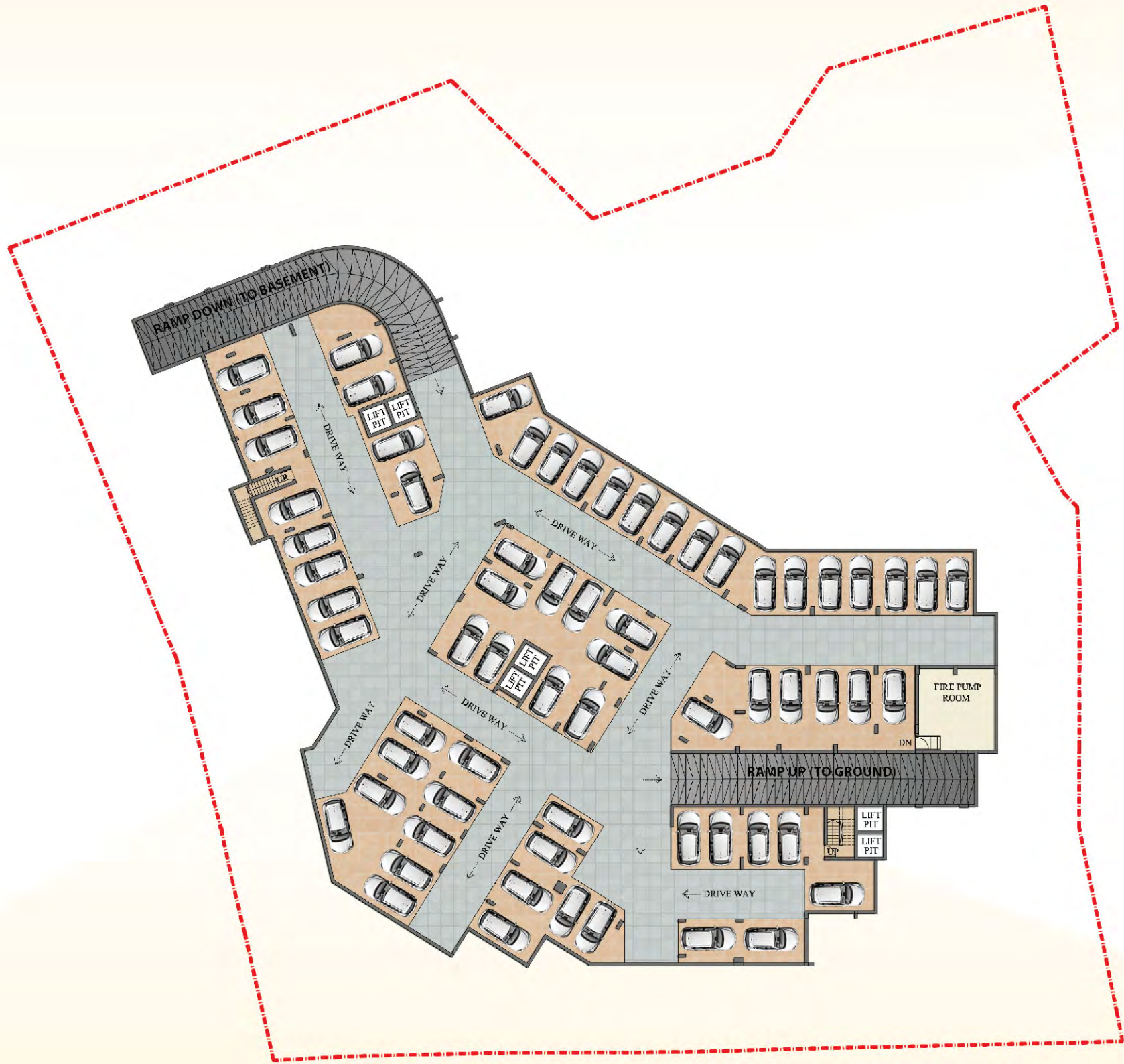








Basement Plan



Block Plan



DISCLAIMER: All information, features and offerings in this brochure are subject to change without notice. Photographs used in this brochure are for illustrative purposes only and may not bear resemblance to actual features/offerings. This brochure is not a legal offer or document.

Compound Plan

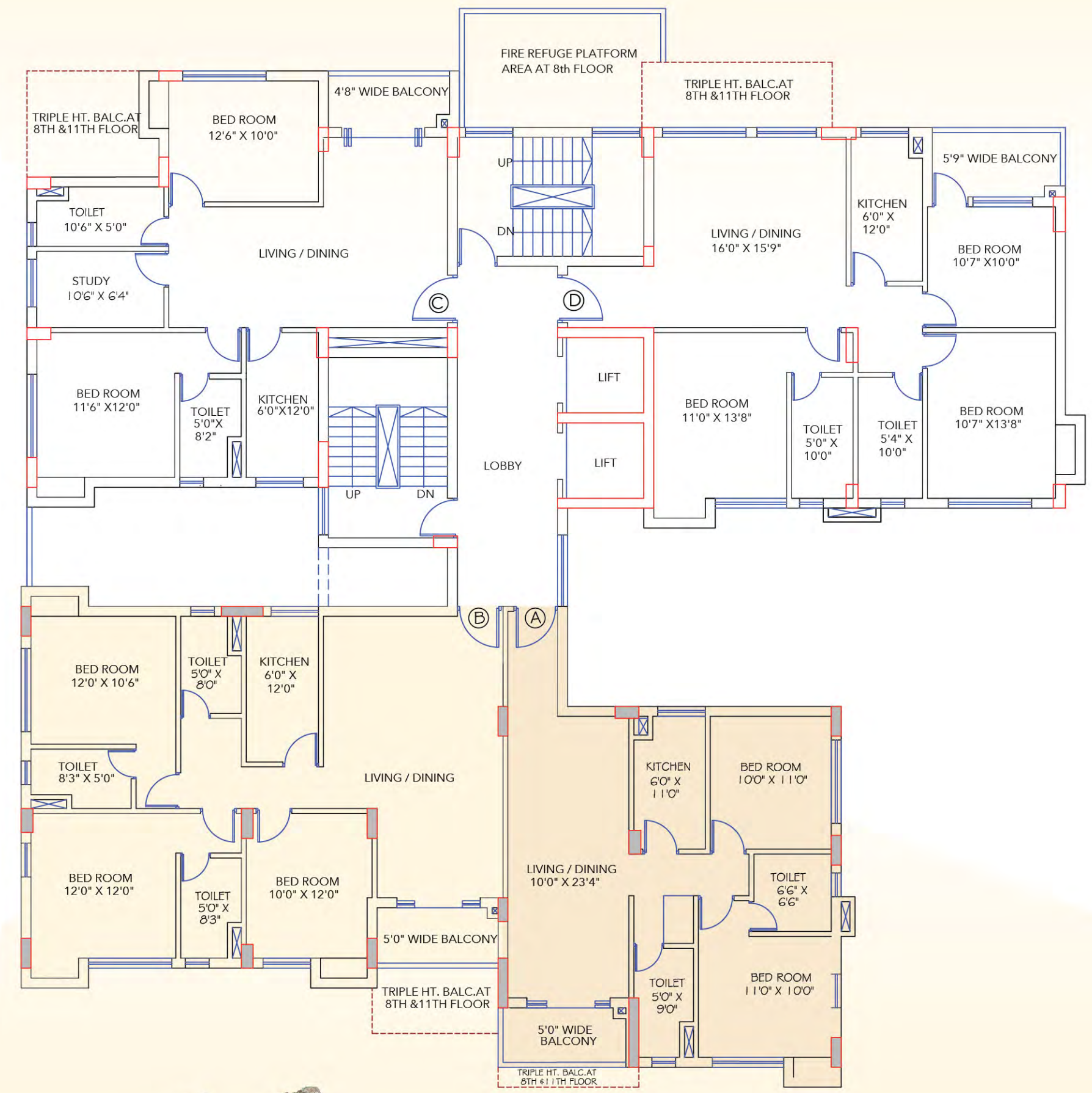






First Floor Plan

Typical Floor Plans  
Swara | Flat A & B



DISCLAIMER: All information, features and offerings in this brochure are subject to change without notice. Photographs used in this brochure are for illustrative purposes only and may not bear resemblance to actual features/offerings. This brochure is not a legal offer or document.



# Typical Floor Plans

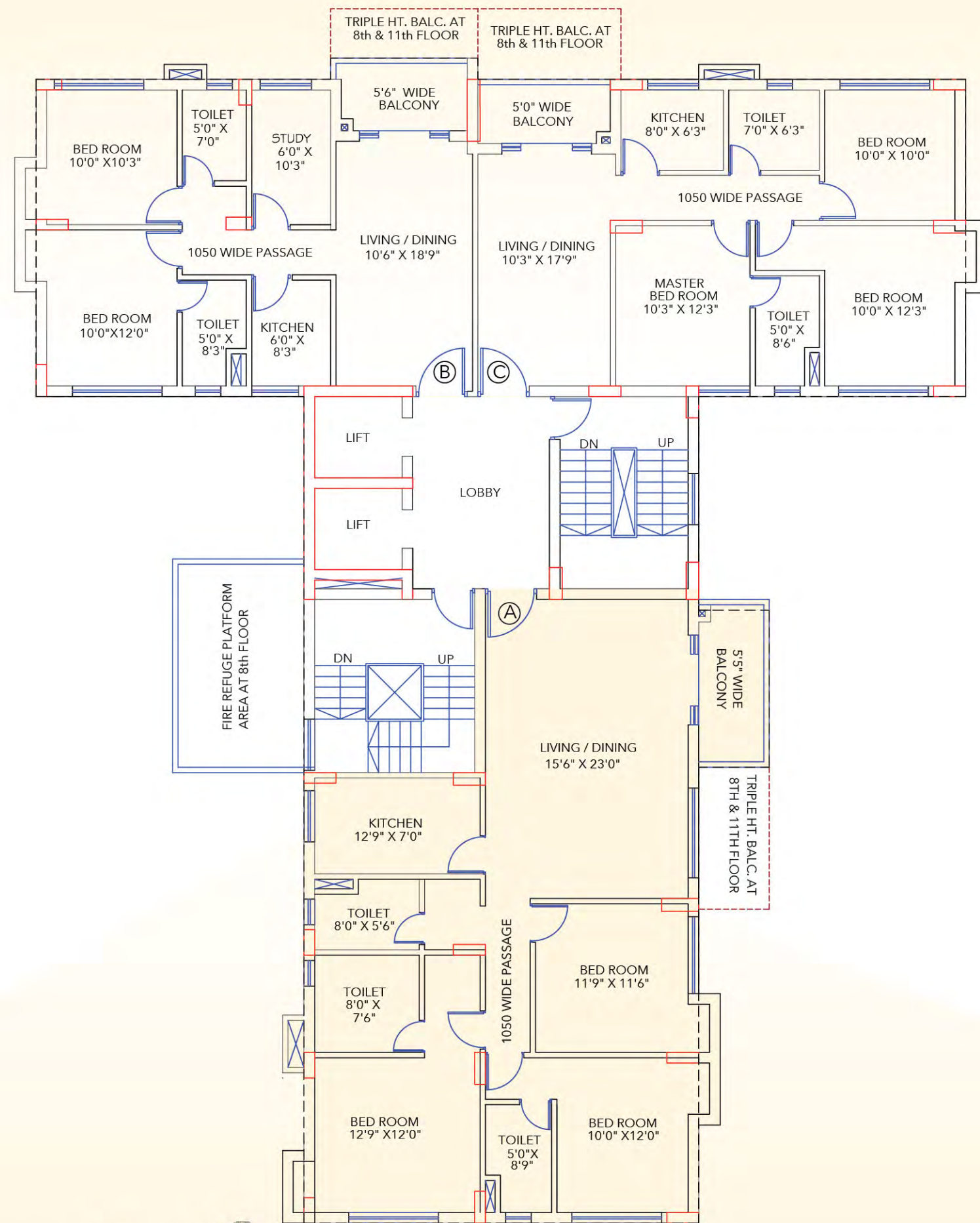
Swara | Flat C & D





# Typical Floor Plans

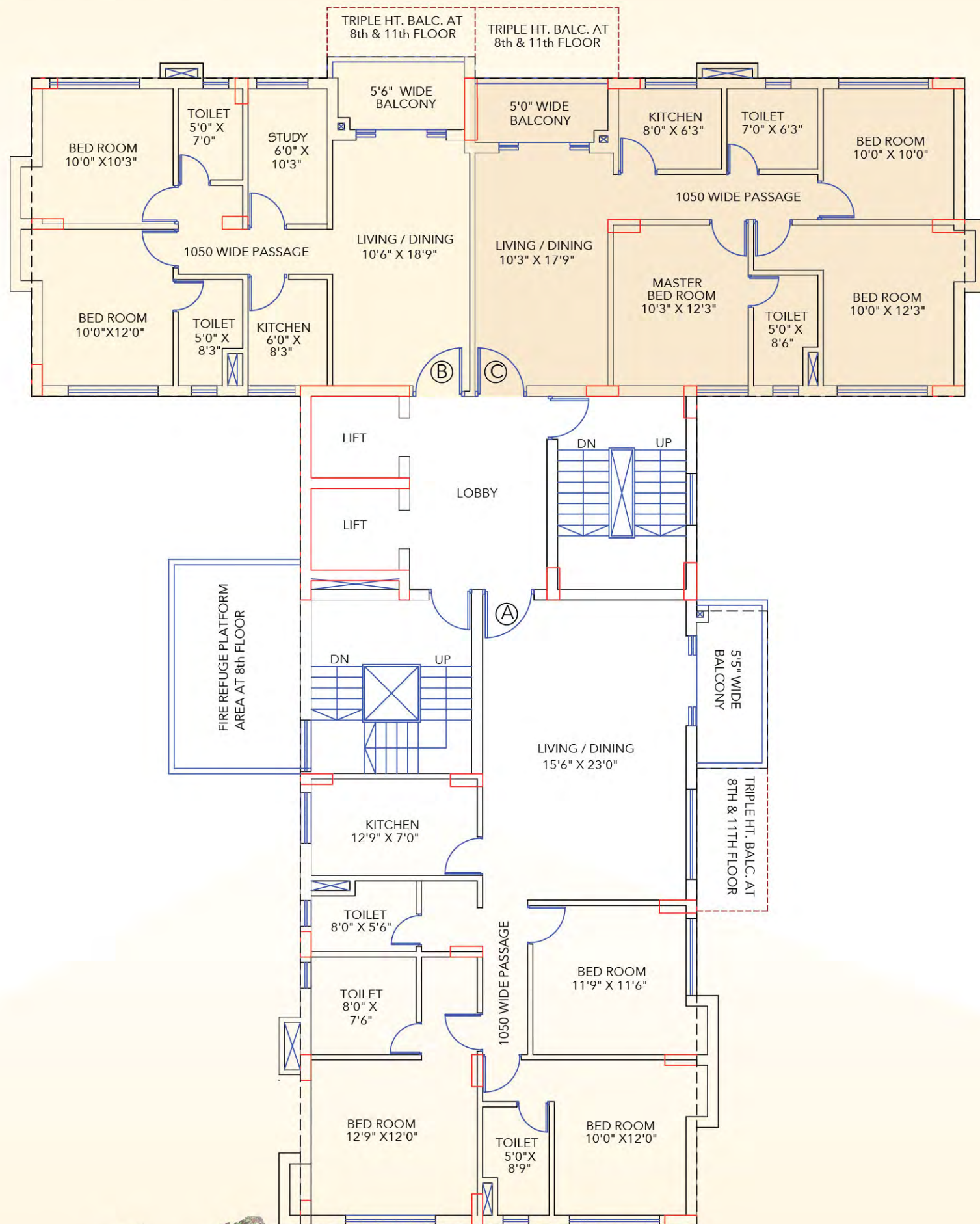
## Dhwani | Flat A





# Typical Floor Plans

Dhwani | Flat B & C



FLAT B



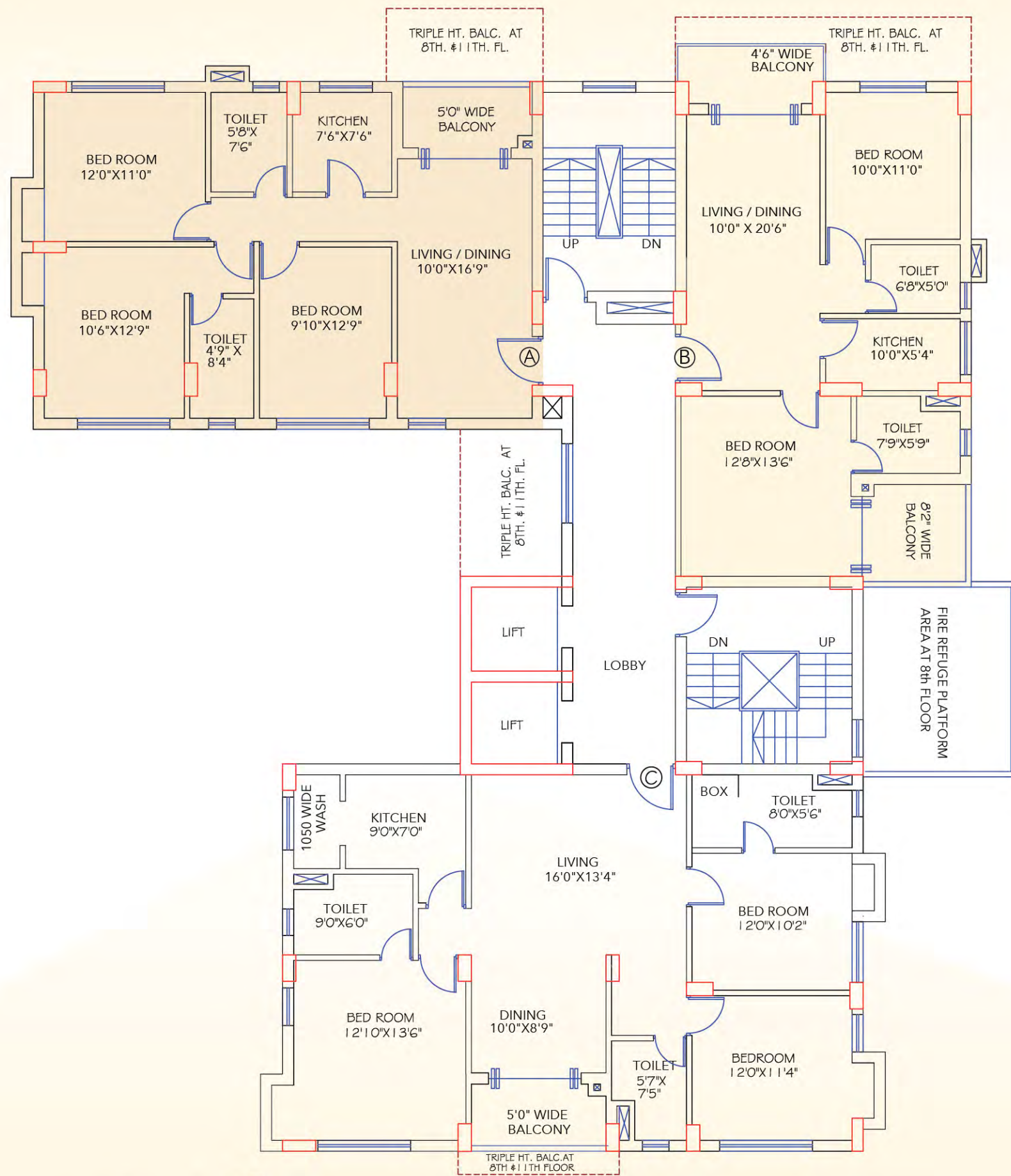
FLAT C





# Typical Floor Plans

## Naad | Flat A & B



FLAT A



FLAT B



Key Plan

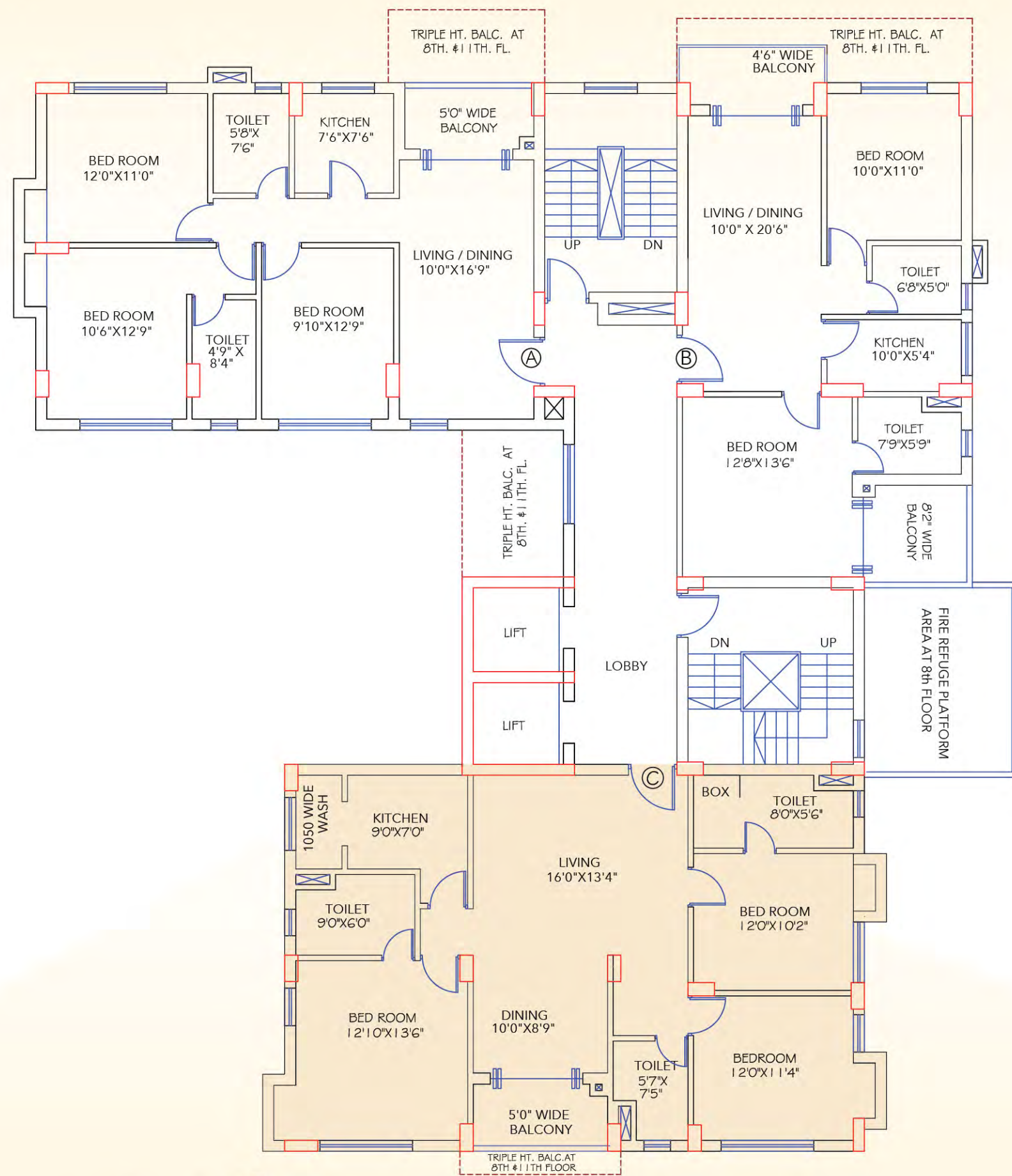
Naad





# Typical Floor Plans

## Naad | Flat C



Key Plan





SWARA				DHWANI			NAAD		
FLOOR	FLAT NO	AREA (SQ FT)	ATTACH TERRACE (SQ FT)	FLAT NO	AREA (SQ FT)	ATTACH TERRACE (SQ FT)	FLAT NO	AREA (SQ FT)	ATTACH TERRACE (SQ FT)
1st Floor	11A	1316	572	21A	2032	680	31B	1277	578
	11B	1808	252				31C	1875	430
	11C	1495	670						
	11D	1719	1107						
2nd Floor	12A	1316		22A	2032		32A	1475	
	12B	1808					32B	1277	
	12C	1495					32C	1875	
	12D	1719							
3rd Floor	13A	1316		23A	2032		33A	1475	
	13B	1808					33B	1277	
	13C	1495					33C	1875	
	13D	1719							
4th Floor	14A	1316		24A	2032		34A	1475	
	14B	1808					34B	1277	
	14C	1495					34C	1875	
	14D	1719							
5th Floor	15A	1316		25A	2032		35A	1475	
	15B	1808					35B	1277	
	15C	1495					35C	1875	
	15D	1719							
6th Floor	16A	1316		26A	2032		36A	1475	
	16B	1808					36B	1277	
	16C	1495					36C	1875	
	16D	1719							
7th Floor	17A	1316		27A	2032		37A	1475	
	17B	1808					37B	1277	
	17C	1495					7C	1875	
	17D	1719							
8th Floor	18A	1317	75	28A	2032	59	38A	1474	145
	18B	1808	56				38B	1277	63
	18C	1495	87				38C	1875	21
	18D	1719	85						
9th Floor	19A	1316		29A	2032		39A	1475	
	19B	1808					39B	1277	
	19C	1495					39C	1875	
	19D	1719							
10th Floor	110A	1316		210A	2032		310A	1475	
	110B	1808					310B	1277	
	110C	1495					310C	1875	
	110D	1719							
11th Floor	111A	1316	75	211A	2032	59	311A	1474	145
	111B	1808	56				311B	1277	63
	111C	1495	87				311C	1875	21
	111D	1719	85						
12th Floor	112B	1880	833	212A	2032		312A	1475	
				212B	1407	813	312B	1277	
							312C	1875	



A project of  
**mani**  
change**for**good

in association with

**MBPS**

**Correspondence Address**

**MANI ENCLAVE PVT LTD**

ISO 9001 : 2008

11/1 SUNNY PARK 1ST FLOOR KOLKATA 700019 **P** (033) 2485 8561/2485 8562 **F** (033) 2485 8565

**E** info@manienclave.com **W** www.manienclave.com