

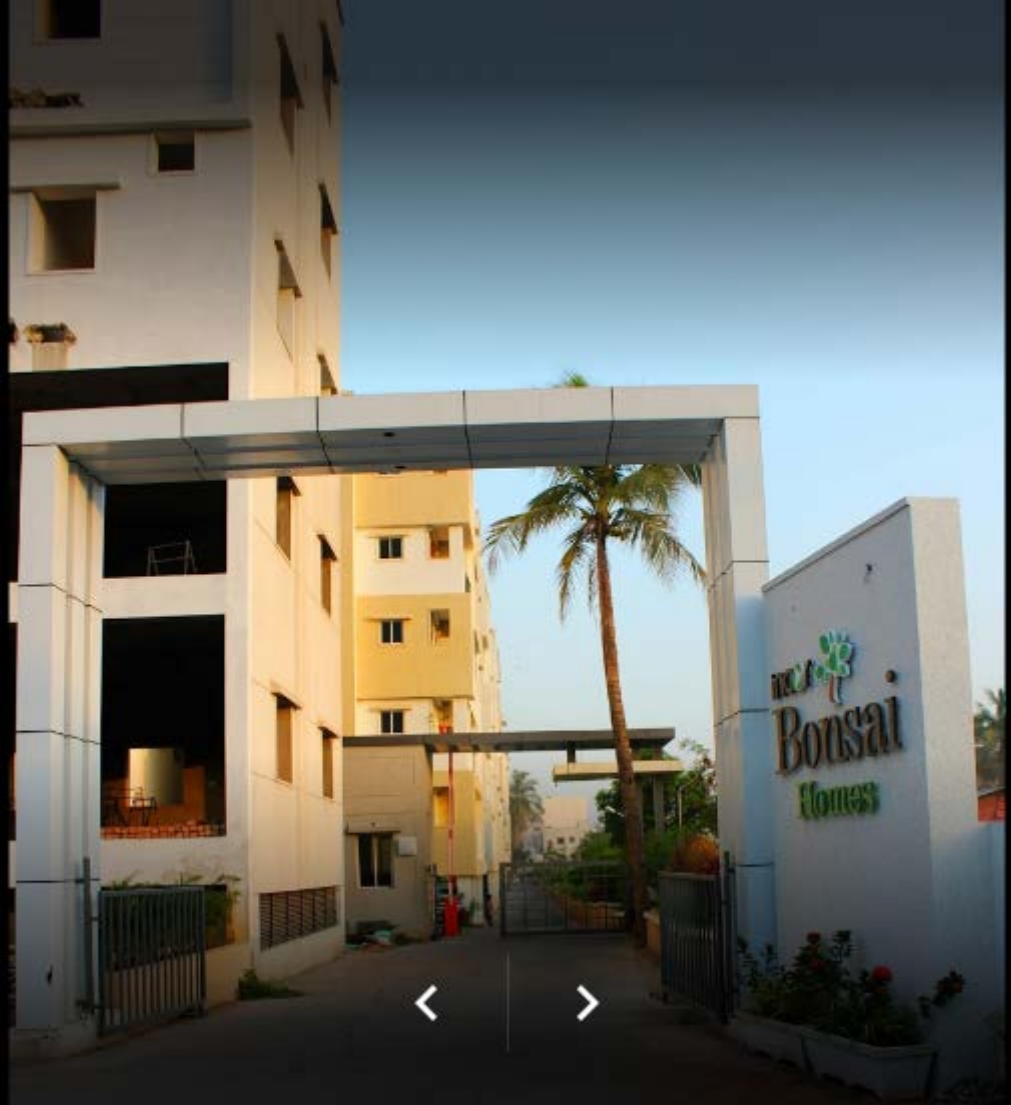






incoor
Bonsai
Homes





Bonsai
Homes





Specifications

Structure

RCC framed structure designed to relevant IS CODES & ZONE II compliance.

Basement Car parking

Cement rendered flooring with grooves Column crash guards for basement columns.

Flooring

Vitrified tiles for Living & Dining Vitrified tiles for Bedrooms Anti-skid lecture tiles for Kitchen Anti-skid lecture tiles for balcony Acid resistant anti-skid ceramic tiles in toilets / wash area Flooring pattern with granite & anti-skid textured tiles for corridor. Granite with flame cut / grooves of staircase.

Painting

External : Exterior emulsion paint in combination with textured finishes and appropriate cladding as per elevation.

Internal : Lustran finish with emulsion paint for walls & ceiling.

Toilets

All toilets will consist of wash basin EWC with flush tank Health faucet Hot and cold wall mixer with shower Provision for geyser & exhaust fans in all toilets All fittings are chrome plated.

Lifts

High speed automatic passenger lifts with rescue device with VDF for energy efficiency automatic stop at floor level in case of any failure.

Generator

100% DG and backup for common areas and lifts, 1KV DG Power back.

Super Structure

Exterior moulded clay bricks.

Doors

Main door : Indian teak wood frame with threshold & custom designed flush shutter with hardware of reputed make.

Internal doors : Indian teak wood frame & BIS branded flush shutters with hardware of reputed make.

Toilet doors : Indian teak wood frame & BIS branded water proofed flush shutter & hardware of reputed make.

Windows & Ventilators : Aluminum frames with float glass.

Wall cladding

Kitchen : Ceramic tiles dado up to 2' height above kitchen platform

Toilets : Glazed ceramic tiles dado up to door height.

Urinals / Wash areas : Glazed ceramic tiles dado up to 3' height.

Wall cladding

Platform : Granite platform with stainless steel sink with hardware of reputed make.

Toilets : Glazed ceramic tiles dado up to door height.

Urinals / Wash : Provision for washing machine & wet area for washing urinal etc.,

Electrical

Concealed wiring Power outlets for A/C in all bedrooms Power outlets for geysers in all toilets. Power plug for cooking range chimney, refrigerator, microwave oven, mixer / grinder in kitchen. Plug points for TV & audio systems etc., 3-Phase supply for each unit and individual meter board. Miniature Circuit Breakers (MCB) for each distribution board.

Internet

WiFi enabled in Club House.



PCOP
Bonsai Homes



HUDA Township
Nallagandla HUDA

Lingampally MMTS

NH 7

ICICI Financial Dist



POLARIS
live your dream

Microsoft

Cape Gemini



Infosys
POWERED BY INTELLECT
DRIVEN BY VALUES



Gachibowli Stadium



IIT

Central University



DLFA
BUILDINGS INDIA



Botanical Gardens



Chirec Public School

Outer Ring Road

Kothaguda Junction

IBM

HITECH CITY



Lake

CYBERPARK



Shilparamam



Cyber Towers



Durgam Cheruvu



Satyam

Cognizant



HITEC



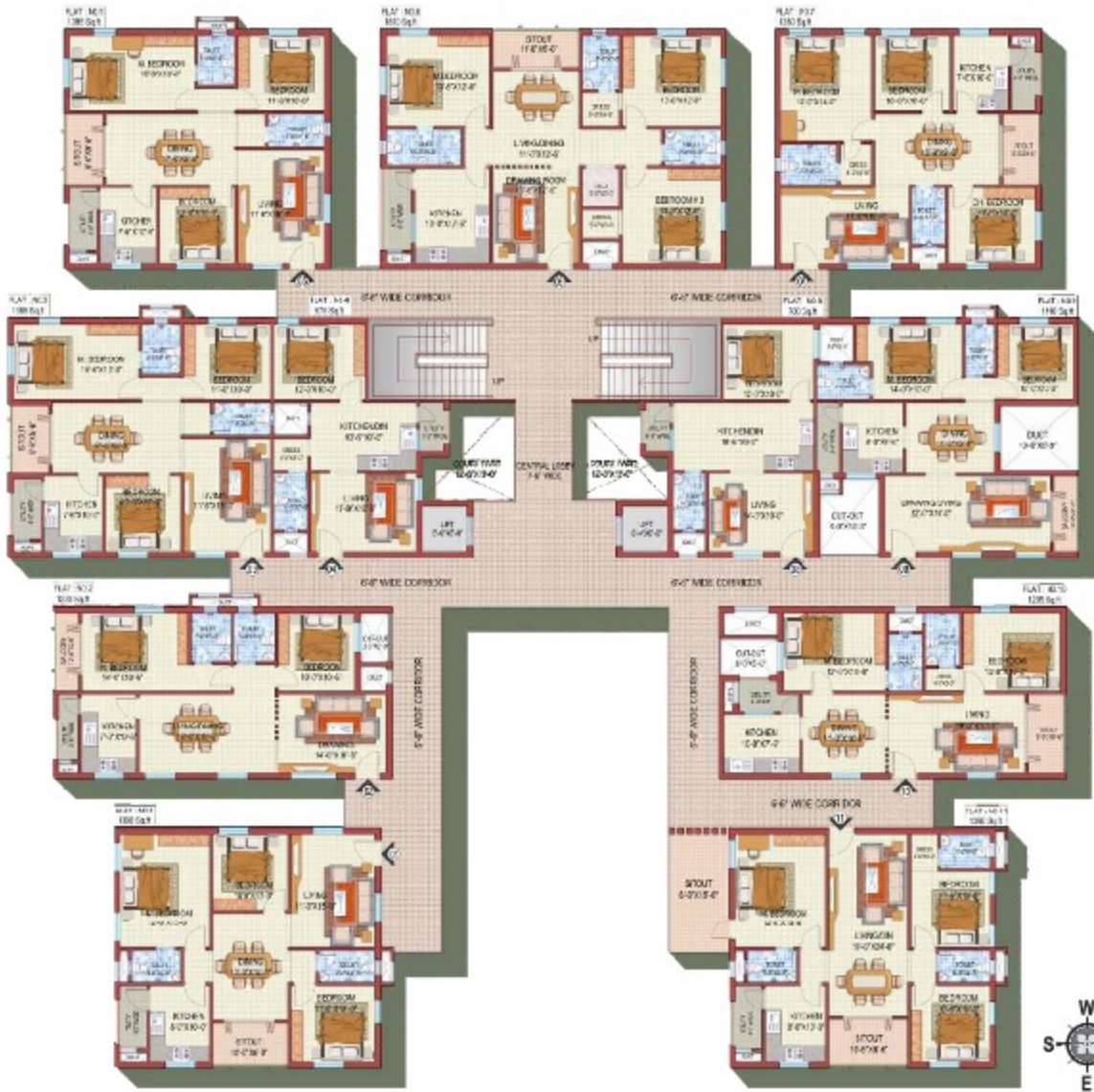
JNTU

KPHB

NH 7

TOWER 2

Unit No	BHK	Sq. ft
01	3BHK	1390
02	2BHK	1230
03	3BHK	1385
04	1BHK	675
05	3BHK	1395
06	3BHK	1810
07	3BHK	1380
08	1BHK	700
09	2BHK	1110
10	3BHK	1390





Unit No	BHK	Sq. ft
A-03	2BHK	1260
A-05	2BHK	1020
A-06	2BHK	1020
A-08	2BHK	1290
A-01	3BHK	1640
A-02	3BHK	1440
A-04	3BHK	1320
A-07	3BHK	1440
A-09	3BHK	1630
A-10	3BHK	1850



Bonsai

Homes

First Home. First Joy.





Unit No	BHK	Sq. ft
A-03	2BHK	1260
A-05	2BHK	1020
A-06	2BHK	1020
A-08	2BHK	1290
A-01	3BHK	1640
A-02	3BHK	1440
A-04	3BHK	1320
A-07	3BHK	1440
A-09	3BHK	1630
A-10	3BHK	1850



TOWER-3



BLOCK-B, TOWER-2

UNIT NO	BHK	TOTAL AREA SQ. FT
FLAT 01	3 BHK	1681 SFT
FLAT 02	3 BHK	1432 SFT
FLAT 03	2 BHK	1193 SFT
FLAT 04	2 BHK + STUDY	1328 SFT
FLAT 05	2 BHK	1125 SFT
FLAT 06	2 BHK	1080 SFT
FLAT 07	3 BHK	1431 SFT
FLAT 08	2 BHK	1325 SFT
FLAT 09	3 BHK	1605 SFT
FLAT 10	3 BHK	1091 SFT

