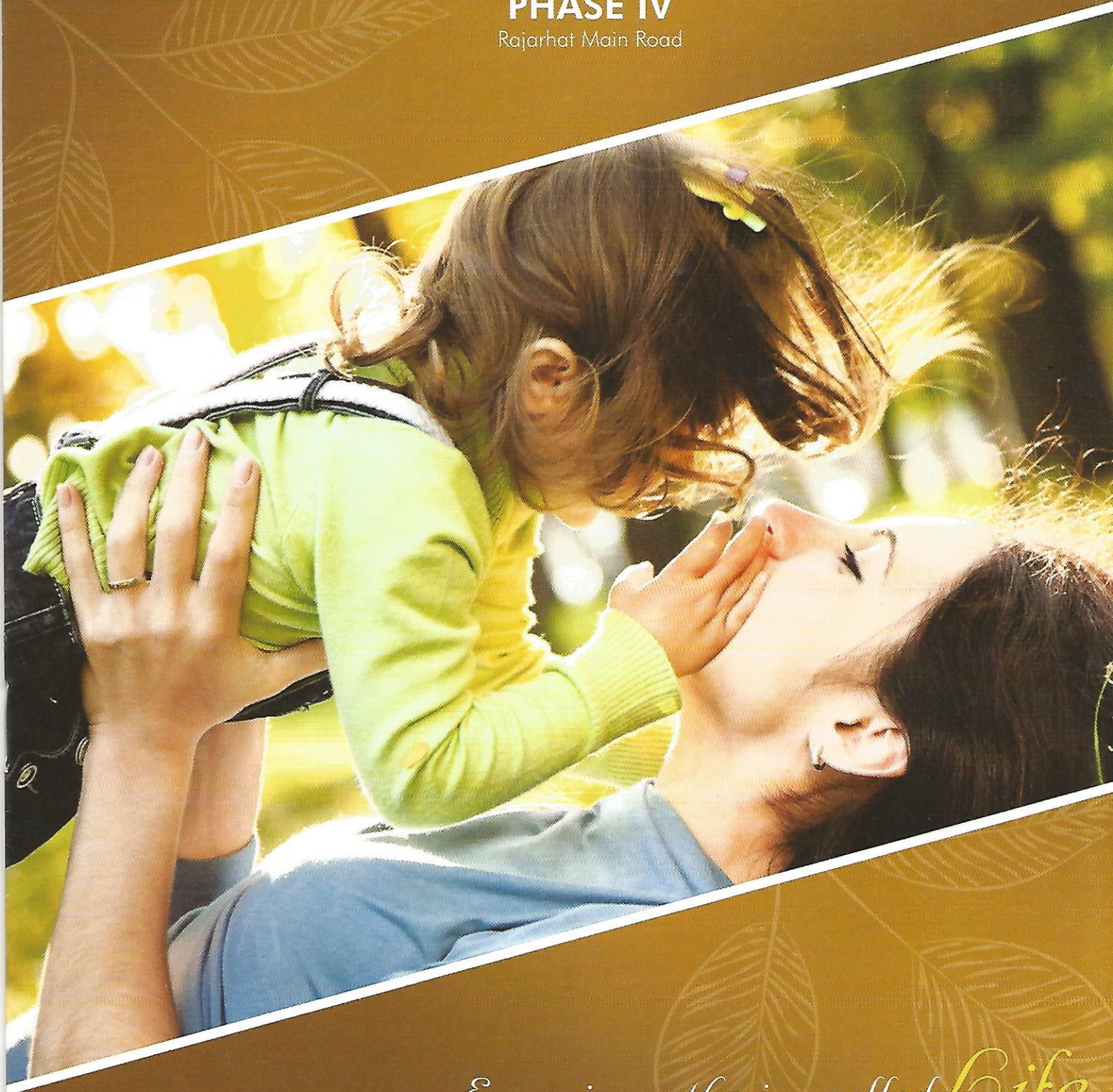




SHRESHTA GARDEN

PHASE IV
Rajarhat Main Road



*Experience the joy called **Life***



SHRESHTA GARDEN

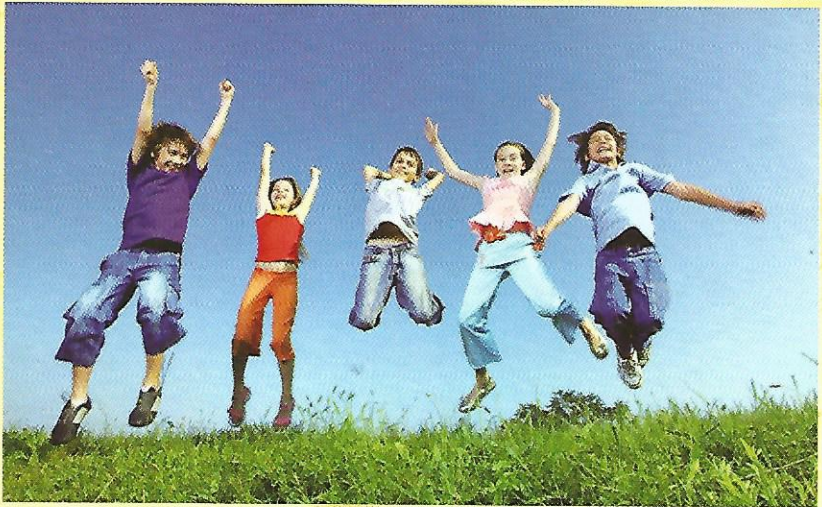
Rajarhat Main Road



A self-contained complex with more than 150 families residing in it, **SHRESHTA GARDEN** is a milestone in its own right on Rajarhat Main Road in terms of its quality and aesthetics. The Phase IV of the complex is set to add another feather in the cap for **SHRESHTA GARDEN**.

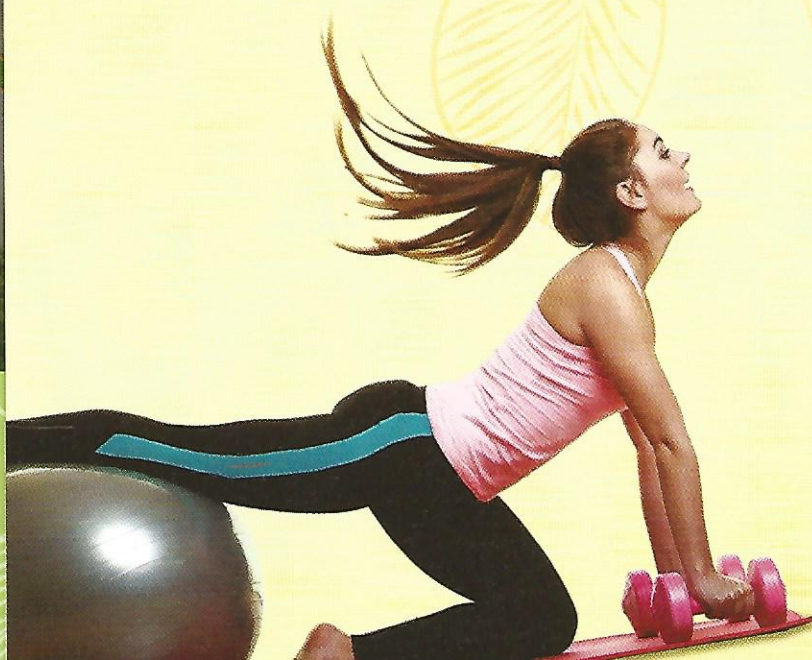
So, be the next to own an apartment at **SHRESHTA GARDEN** and celebrate countless





Amenities & Facilities

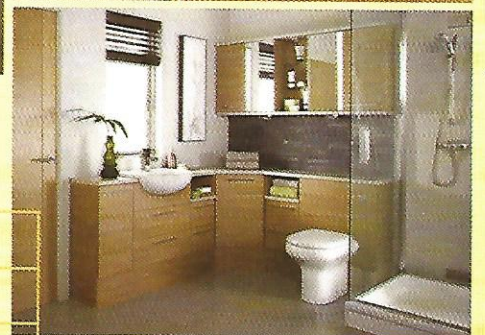
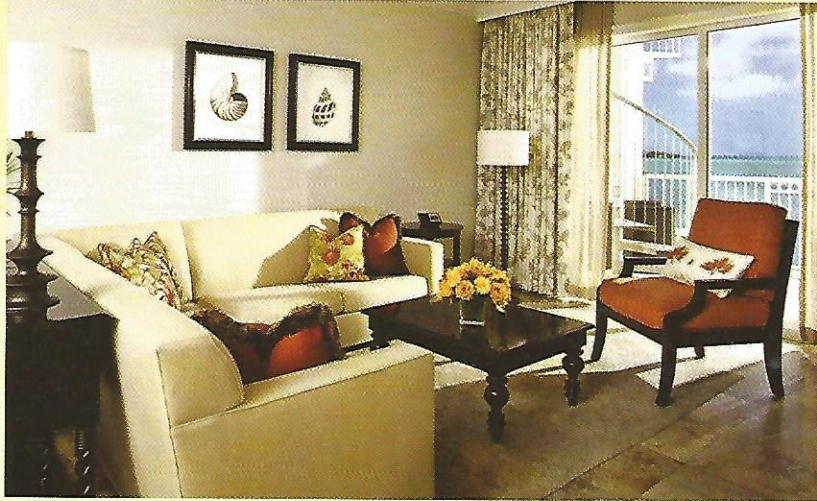
- Rooftop Jacuzzi
- AC Community Hall
- Well-equipped AC Gymnasium
- AC Games Room
- AC Library
- Children's Play Area
- Landscaped areas with paved pathways
- Convenience Store
- 24hr Power Back-up
- Water Treatment Plant
- Intercom facility & CCTV
- Car/two-wheeler parking





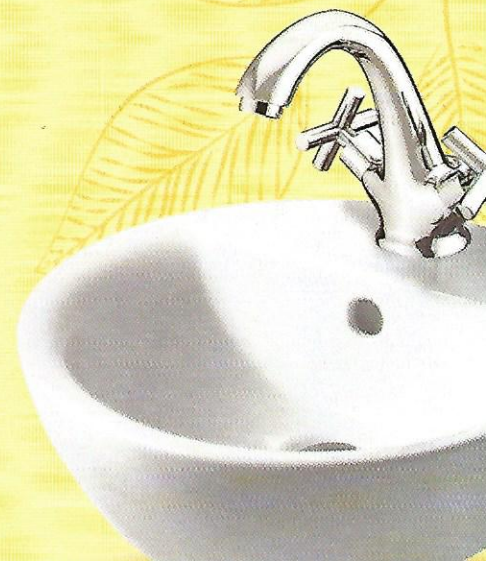
SHRESHTHA GARDEN

Rajarhat Main Road



Specifications

Foundation	RCC pile foundation
Super Structure	RCC frame structure with infill brick walls
Internal walls	Brick walls with sand cement plastering and POP finish
Flooring	Vitrified floor tiles in bedrooms / living / dining and common areas
Kitchen	Anti-skid vitrified / ceramic tiles for flooring, black granite kitchen platform with steel sink and glazed ceramic tiles upto 2ft above the platform
Toilet	Anti-skid ceramic tile flooring, ceramic tiles in Dados up to 7ft height
Windows	Sliding anodized aluminium windows with glass and fittings
Doors	Main entrance with night latch, solid core flush door with paint for other doors
Sanitaryware	White porcelain Parryware / Cera fittings matched with chromium plated Jaquar or equivalent fittings
Bathrooms	Geyser point in all and one washing machine point
Electricals	Concealed insulated copper wiring, modular switches, AC point in master bedroom, TV / Telephone points in living and master bedroom
Lift	OTIS or KONE or equivalent make



Ground Floor Plan



Site Address:

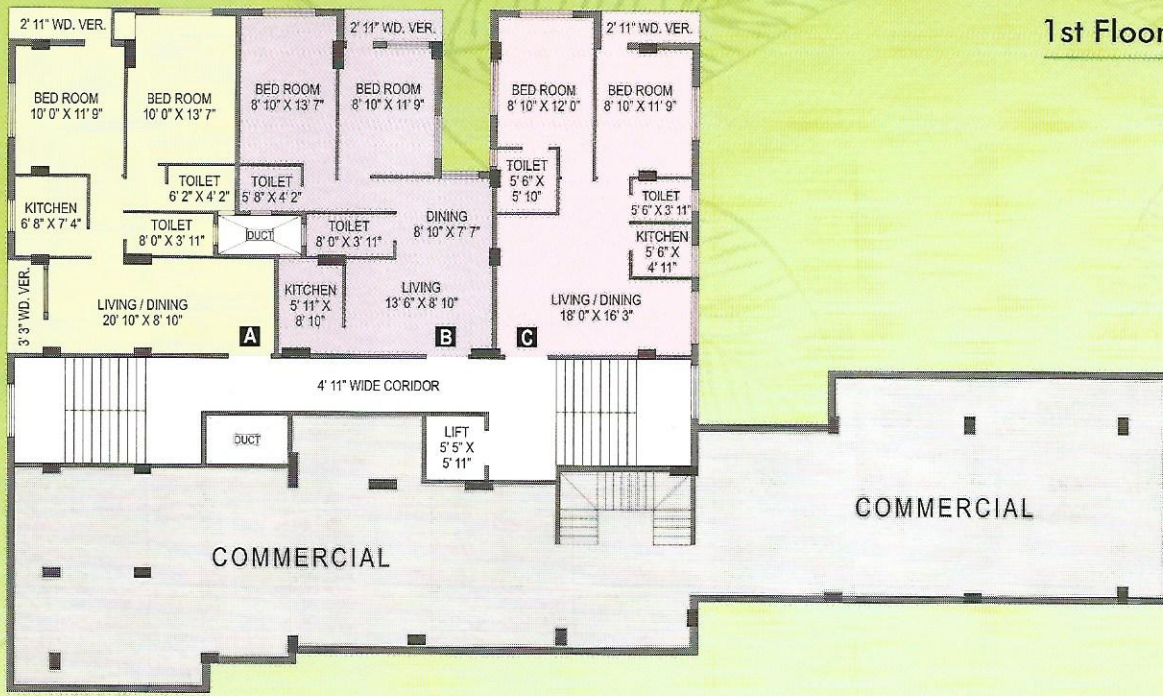
Kali Park, Gopalpur, Rajarhat Main Road
Kolkata - 700 136

Typical Floor Plan Block E (Orchid)



FLAT	SALEABLE AREA
A	1100 sq ft
B	1224 sq ft
C	1121 sq ft
D	1087 sq ft

1st Floor Plan Block F (Daffodil)



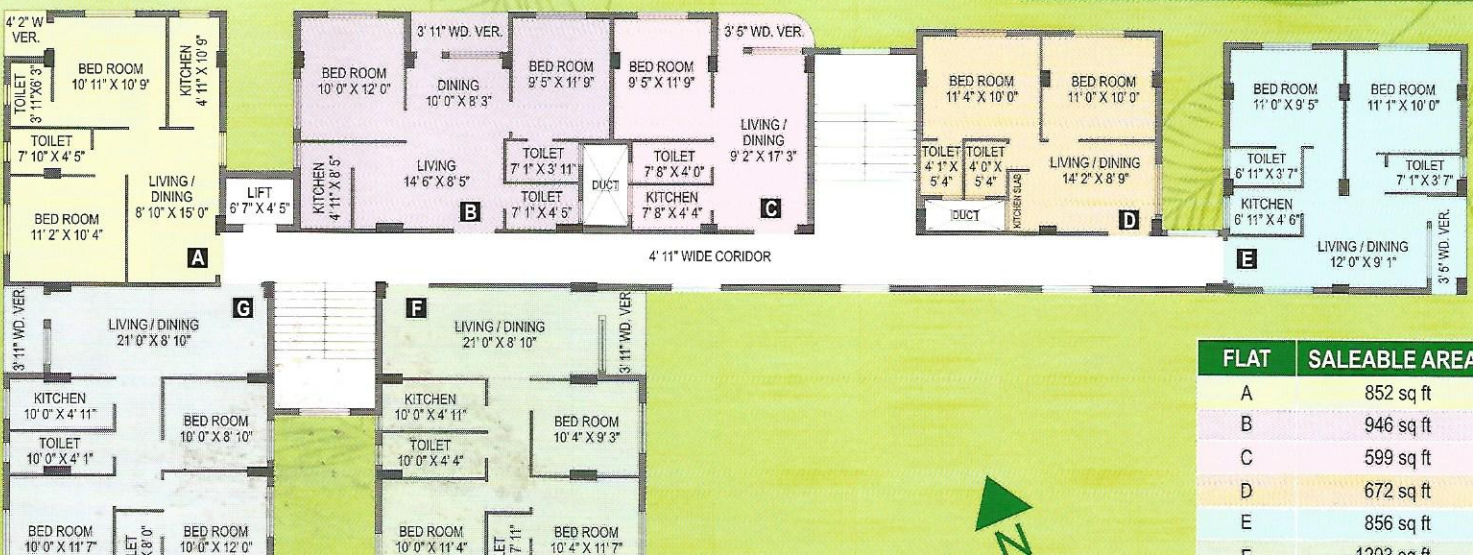
FLAT	SALEABLE AREA
A	1005 sq ft
B	901 sq ft
C	870 sq ft

2nd to 5th Floor Plan Block F (Daffodil)



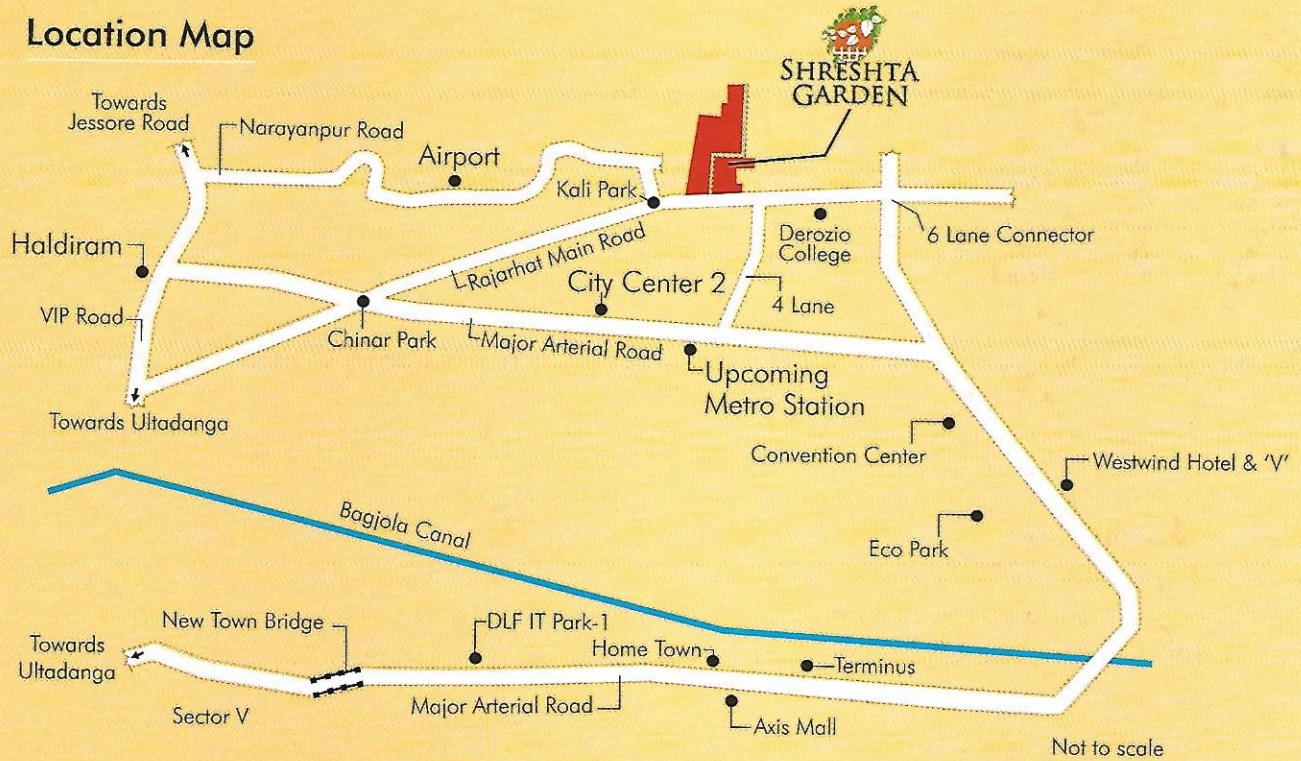
FLAT	SALEABLE AREA
A	1005 sq ft
B	901 sq ft
C	870 sq ft
D	1504 sq ft
E	1387 sq ft

Typical Floor Plan Block G (Tulip)



FLAT	SALEABLE AREA
A	852 sq ft
B	946 sq ft
C	599 sq ft
D	672 sq ft
E	856 sq ft
F	1203 sq ft

Location Map



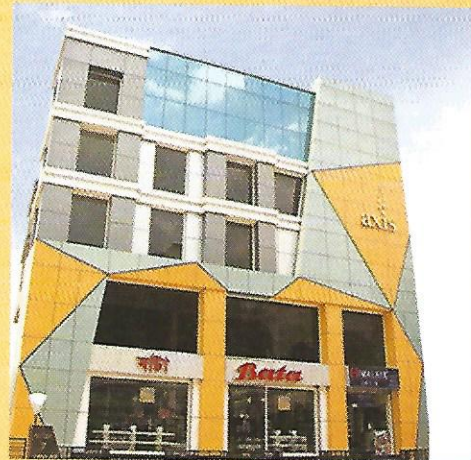
KEY DISTANCES

- Airport - 3.3 km
- City Centre II - 1.8 km
- VIP Road - 2.8 km
- Upcoming Metro Station - 1.5 km

Other Projects

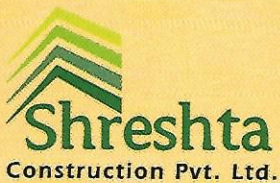


Shreshta Priya, Bhawanipore



Axis, Barasat

Developer:



Neotia Niket
EC-13, Salt Lake City, Kolkata- 700 064
URL: www.shreshta-group.com

29, Elgin Road, Kolkata - 700 020

Call:

93318 37128

98311 18005

Architect:

S.R. Foundation

Solicitors:

Subir Kumar Seal & Associates