



#### MANGLAM BUILD-DEVELOPERS LIMITED

6th Floor, Apex mall  
Lalkothi, Tonk Road  
Jaipur (Rajasthan) India  
Telephone: +91-141-4311100  
Pin No. 302015  
Email: [info@manglamgroup.com](mailto:info@manglamgroup.com)  
Web: [www.manglamgroup.com](http://www.manglamgroup.com)

#### DESIGN & CONCEPT

NINE DEGREE  
603, The Milestone Building, Tonk Road, Jaipur - 15  
Phone: 0141-4014411, 9929994999  
mail: [mail@ninedegree.in](mailto:mail@ninedegree.in)  
web: [www.ninedegree.in](http://www.ninedegree.in)

आजादी  
अपने  
आसमान की  
आजादी  
अपने  
आँगन की



*Dangan*  
PRIME

*Dangan*  
PRIME

INDEPENDENT DUPLEX VILLAS  
mahapura, near sez, ajmer road



घर से कहीं  
बढ़ कर...  
आशियांना

A warm welcome  
to the grand life.



Although the project offers aesthetically and spaciouly designed villas with modern elevation, the occupants still have the privilege to customize the designs without any external disruption.

Availability of the modern facilities on the nominal charges guarantees the hassle free living. Also, the provision of medical assistance and housekeeping is just a call away.





Panoramic view of villa row and landscaping



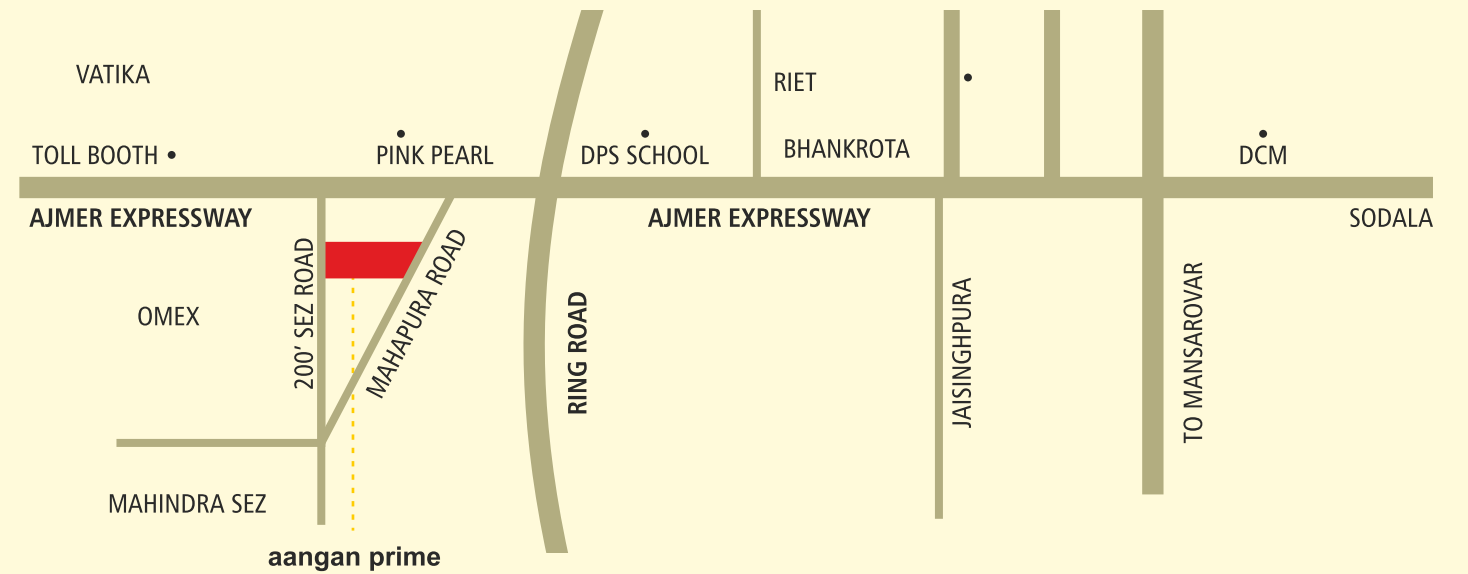
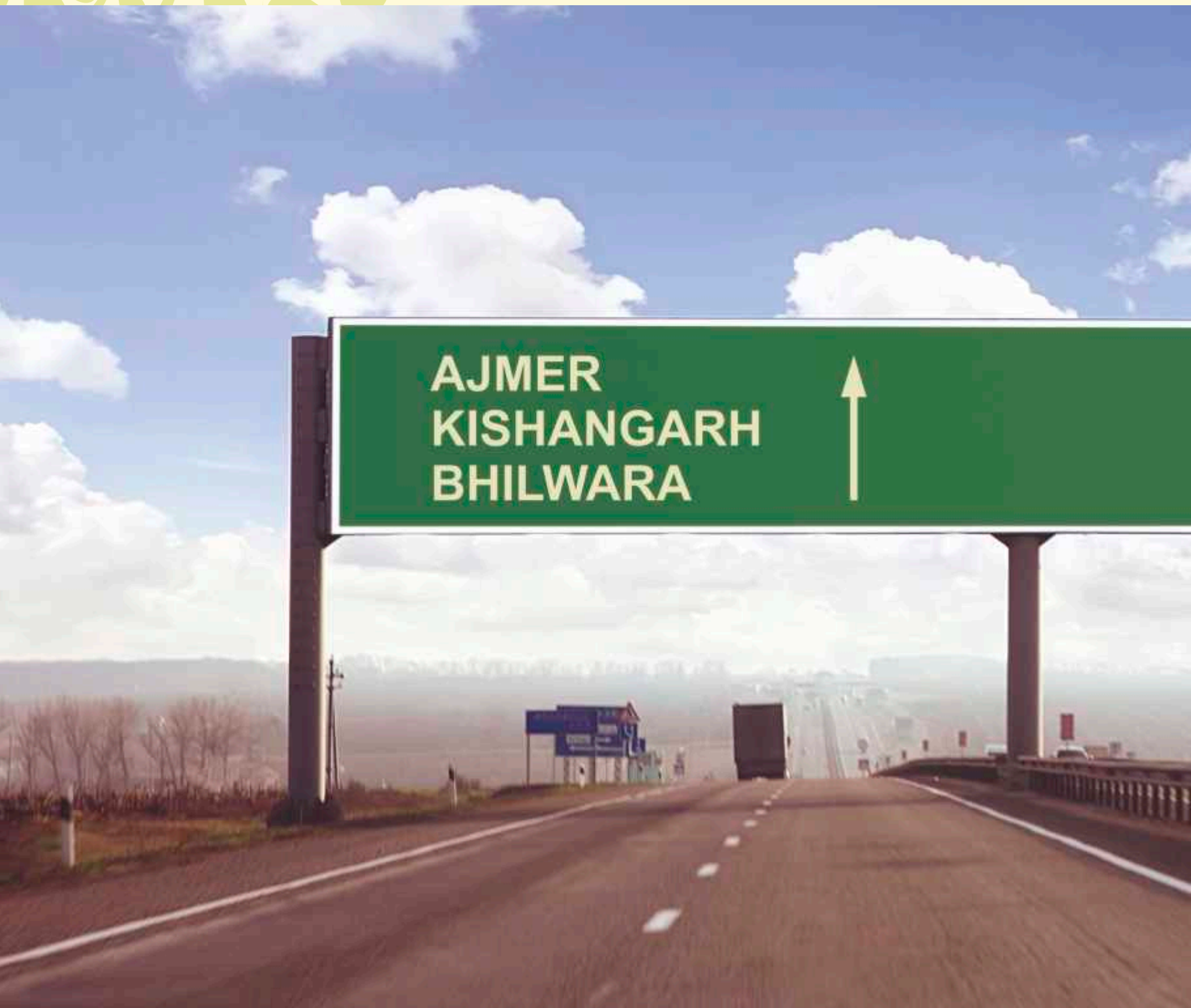
Choose as per your plan from the array of options and elevations we have created for you. Our highly skilled designers bring to you the homes that combine size and style into the single designs. Villas provide a peek into the creativity with the open and elegant interiors making these homes as functional as they are pleasing. Experience the difference with every piece designed to the finest levels of architecture, keeping the notions of the dream houses alive and breathing.

Villa option 25x55



Villa option 29x65





The locality nestling on the insides of the Ring road offers ease in accessibility and commutation convenience. Based at a 100 ft wide road connecting to the 200 ft wide Jaisinghpura road, access to all commercial and leisure centres is minutes away.

The area, enjoying the proximity of the SEZ with operational Infosys, Wipro, Genpact, stands witness to the sight of the ever evolving Jaipur. The vicinity additionally boasts of the blooming residential projects with the six lane express highway at a distance of just 4 kms.

Located at 100 ft wide road connecting to 200' ft wide Jaisinghpura Road

Close to SEZ, where Infosys, Wipro, Deutsche Bank, Genpact are already operational.

Major residential projects of developers in the vicinity

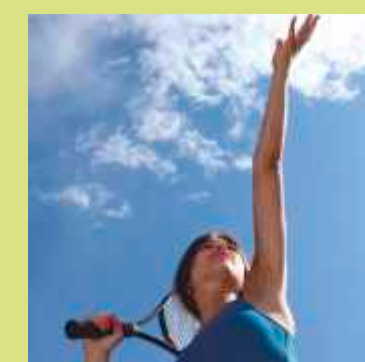
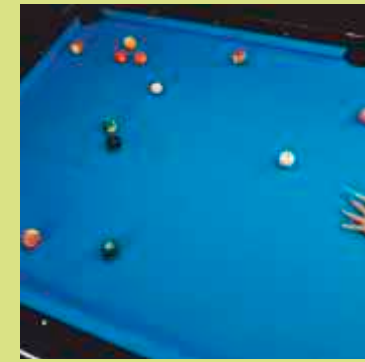
10 Mins to all Commercial and Leisure Centres

Just 4 km from six lane express highway

The project is inside the ring road which will provide convenient commutation and accessibility







एक घर जो  
 चार  
 दीवारों से  
 कहीं बढ़ कर

An address that  
 offers much more  
 than just a home.

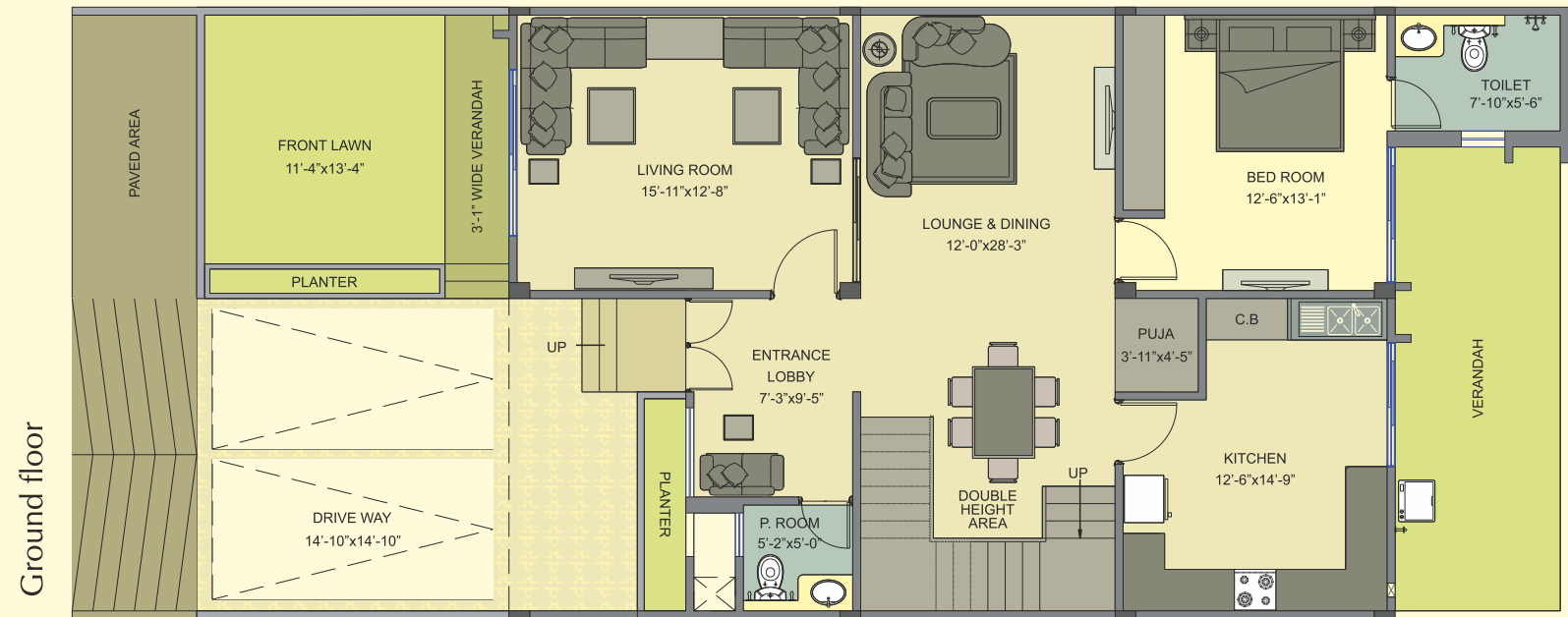
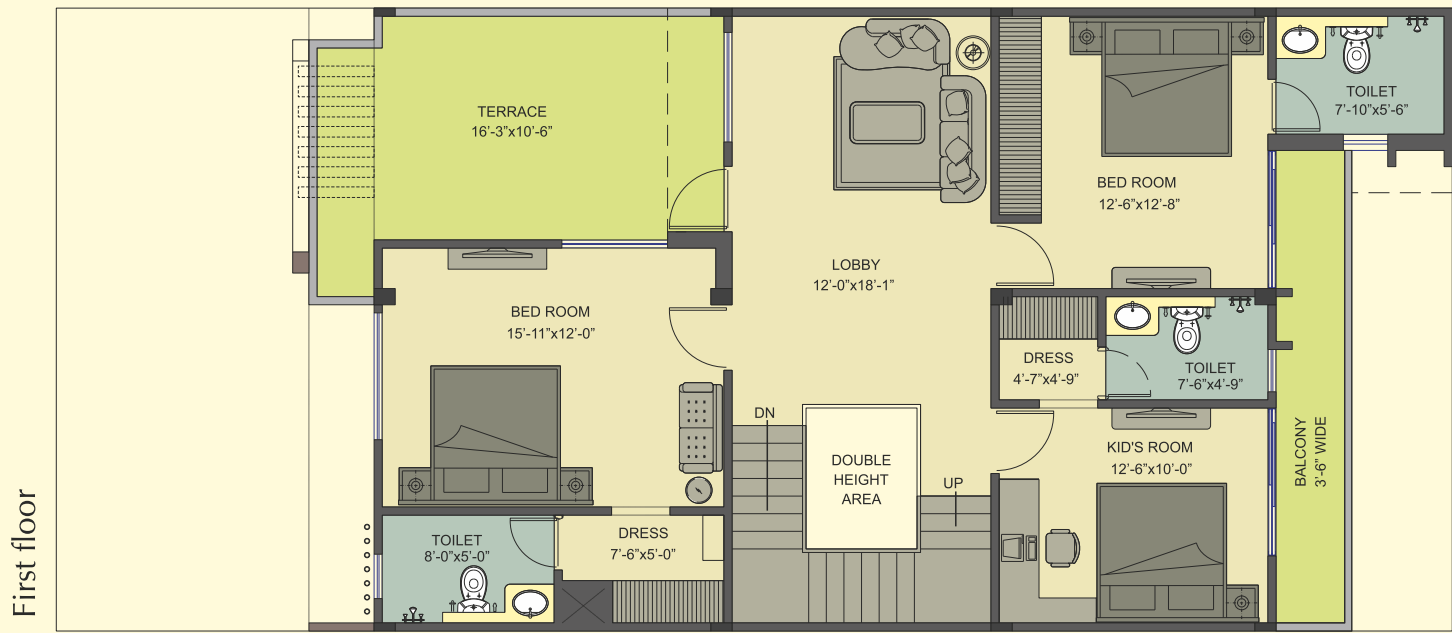
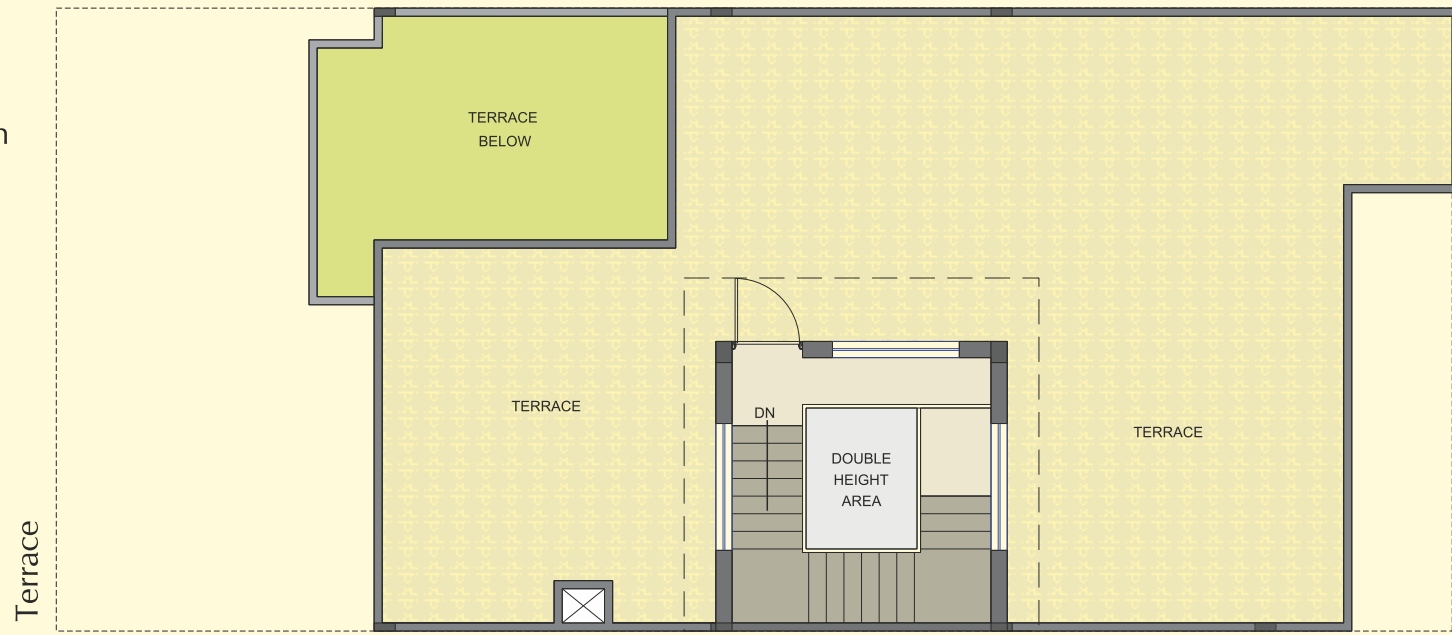
### CLUB HOUSE FEATURES

- 8000 sq.ft. of club house
- Air conditioned gymnasium
- Kids pool
- Pool with filtration
- Party hall
- Games room with carrom, chess, table tennis etc
- Waiting room
- Designer main entrance
- Landscaping with sculptures & water bodies
- Jogging track



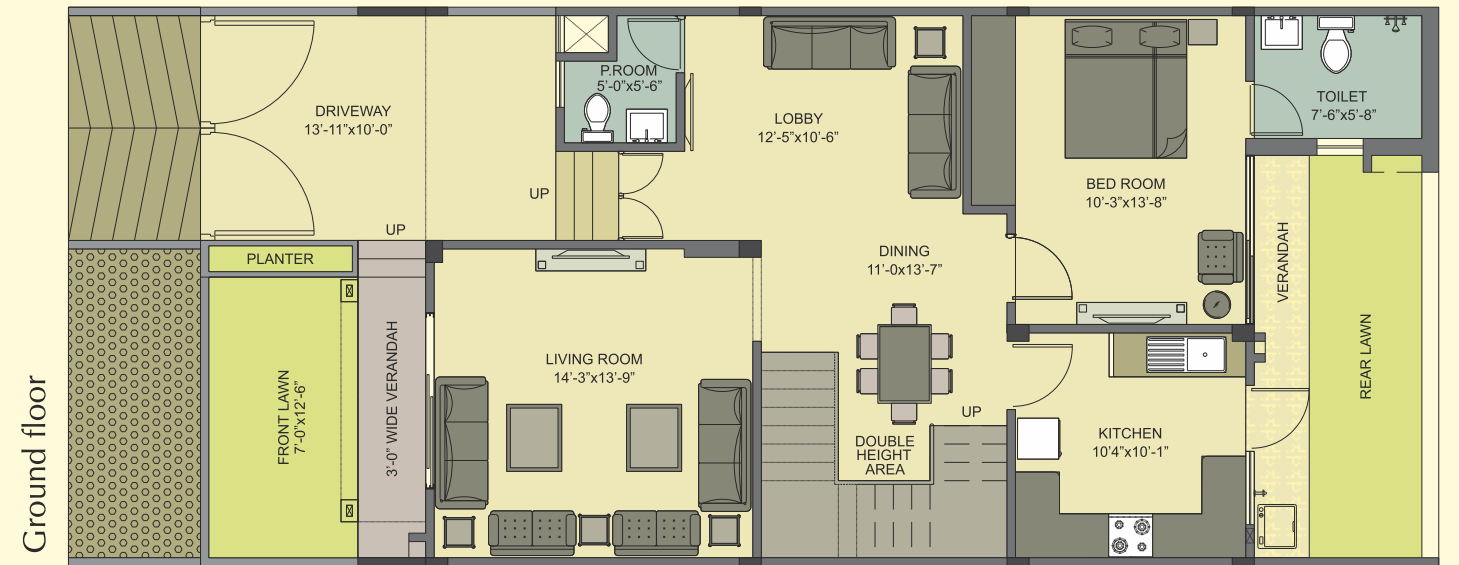
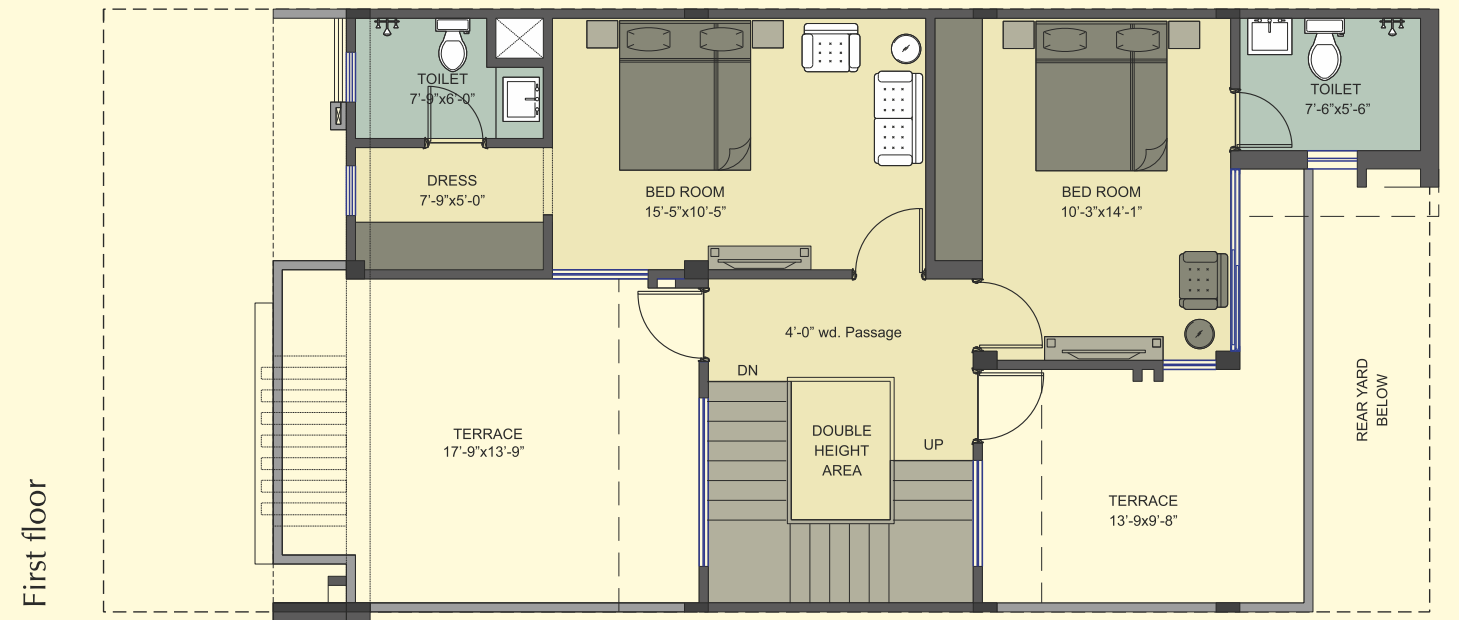
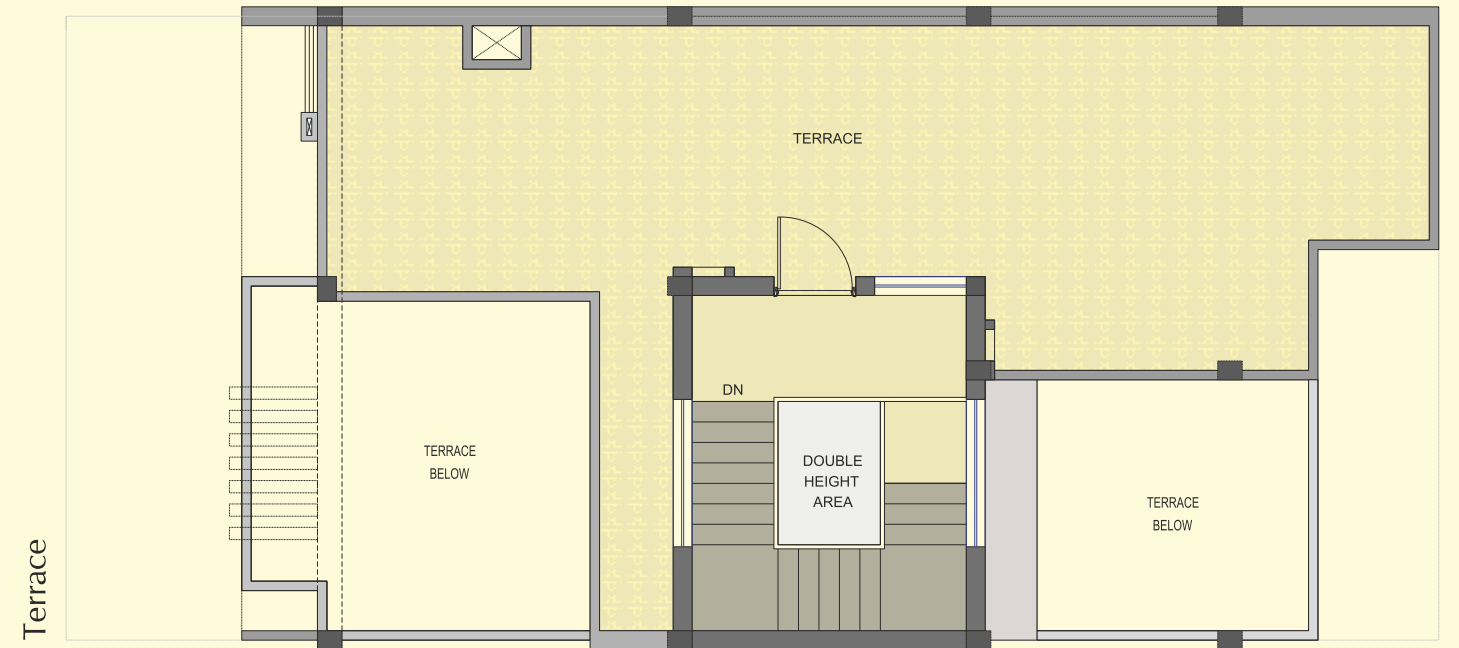
Villa option  
29x65

2500 sq.ft.  
approx



Villa option  
25x55

2100 sq.ft.  
approx





घर जहां  
जिंदगी  
बस्ती है

A home that makes  
life an everyday  
celebration.

- Jaipur Development Authority approved project
- Vastu-friendly layout of township and villas
- Aesthetically & spaciouly designed villas
- Facilities & services for comfortable and hassle free living
- Convenience shopping market
- Service office for electrician, plumber and gardener
- Medical assistance on call on nominal charges

<b>LIVING/DINNING</b>	
Floor	Vitrified tiles
<b>LOBBY/ PASSAGE</b>	
Walls	Plastic emulsion paint on POP base
Ceiling	Plastic emulsion paint
<b>BEDROOMS</b>	
Floor	Vitrified tiles
Walls	Plastic emulsion paint on POP base
Ceiling	Plastic emulsion paint
<b>KITCHEN</b>	
Floor	Anti skid ceramic tiles
Walls	Ceramic tiles up to 2' and plastic emulsion paint
Counter	Marble / Granite
Ceiling	Plastic emulsion paint
Fixtures	CP fitting, SS sink, exhaust fan
<b>TOILETS</b>	
Flooring	Anti skid ceramic tiles
Walls	Tiles/ plastic emulsion/ paint
Counter	Marble / Granite
CP Fittings	Single lever CP fittings, wash basin, wall mounted WC
Ceiling	Plastic emulsion paint
<b>BALCONY</b>	
Floor	Anti skid ceramic tiles
<b>UTILITY AREA</b>	
Ceiling	Exterior paint
Walls	Exterior paint
Railing	M.S. railing and glass railing as elevation
Doors	Internal door frame with flush door
lever	Entrance flush door with night latch, magic eye & premium
<b>STAIRCASES</b>	
Floor	Natural stone tiles
Walls	Flat oil paint
<b>ELECTRICAL</b>	
Fittings	Switches of Northwest/ Crabtree or equivalent Copper wiring Ceiling fans in all rooms Ceiling light in toilets, passages and balcony
<b>BATHROOMS FITTINGS</b>	
Sanitary Ware	Parry ware / Neycer / Cera / Hindware or equivalent
CP Fittings	Kohler brand / Grohe / Jaguar
<b>PLUMBING</b>	CPVC / UPVC piping for water supply
<b>WINDOW</b>	Aluminum powder coated/ UPVC
<b>SECURITY</b>	Access control at entrances, CCTV for common areas
<b>UTILITY ROOM</b>	
Floor	Ceramic tiles
Toilets	Ceramic tile flooring with conventional CPVC & Chinaware
Walls	Oil bound distemper
Ceiling	Oil bound distemper



Details that make the difference



Mr. Nand Kishore Gupta  
Chairman & MD

Setting hallmarks on the road of success in the domain of real estate, The Manglam Group has created a multitude of spectacular structures in Rajasthan. Riding along the guideposts of trust and commitment, we are credited as the transformers of visions into reality!

Exhibiting the essence of integrity and excellence, The Manglam Group stands tall and firm as one of the major real estate developers in Rajasthan. The undertaken projects at Manglam owe their success to the ideal locations, impeccable quality of construction, striking amenities and reasonable prices.

Our innovative approach, using the contemporary framework, presents each project as an edifice in itself; a symbol of precision, setting its own league with an unrivalled blend of functionality and elegance.

townships | hotels | infrastructure | malls | office complex | apartments | finance

#### A GLIMPSE AT OUR PROJECTS



and many more...