

# PREMIUM RESIDENTIAL FLATS

*Gurushikhar*

I, 2 & 3 BHK Apartments

**Near Chokhi Dhani, Tonk Road, Jaipur**



**Gurupragna**

Rajasthan's Fastest Growing Real Estate Group



**Gurupragnya**

Rajasthan's Fastest Growing Real Estate Group



*Gurushikhar*

**Premium Residential Flats**

" If you can Dream it we can Built it "



**Gurupragnya**

Rajasthan's Fastest Growing Real Estate Group



*Gurushikhar*

Block Plan

## Actual Night View



**Gurupragnya**

Rajasthan's Fastest Growing Real Estate Group





**Gurupragna**

Rajasthan's Fastest Growing Real Estate Group

#### **Convenient Amenities:**

- Two elevators in each block.
- 24hrs Security.
- Fire fighting system as per norms.
- Power backup for common area/services.
- Water supply backup by onsite borings.
- Shopping centre for day to day utilities.
- Medical Clinic (Option).
- Professional facilities management services.

#### **World Class Club With:**

- Gymnasium
- Badminton & table tennis court.
- Long jogging track.
- Swimming pool & Kids pool
- Sauna & steam bath.

#### **Eco-Friendly Designs**

- Pollution free environment.
- Rain water harvesting.
- More than 75% landscape.
- Large lush green lawn.
- Special kids play area.

#### **Electrical:**

- Concealed copper wiring (R.R. Cable).
- ISI Marked switches, plugs & fan regulators.
- Children friendly electrical connection

#### **General :**

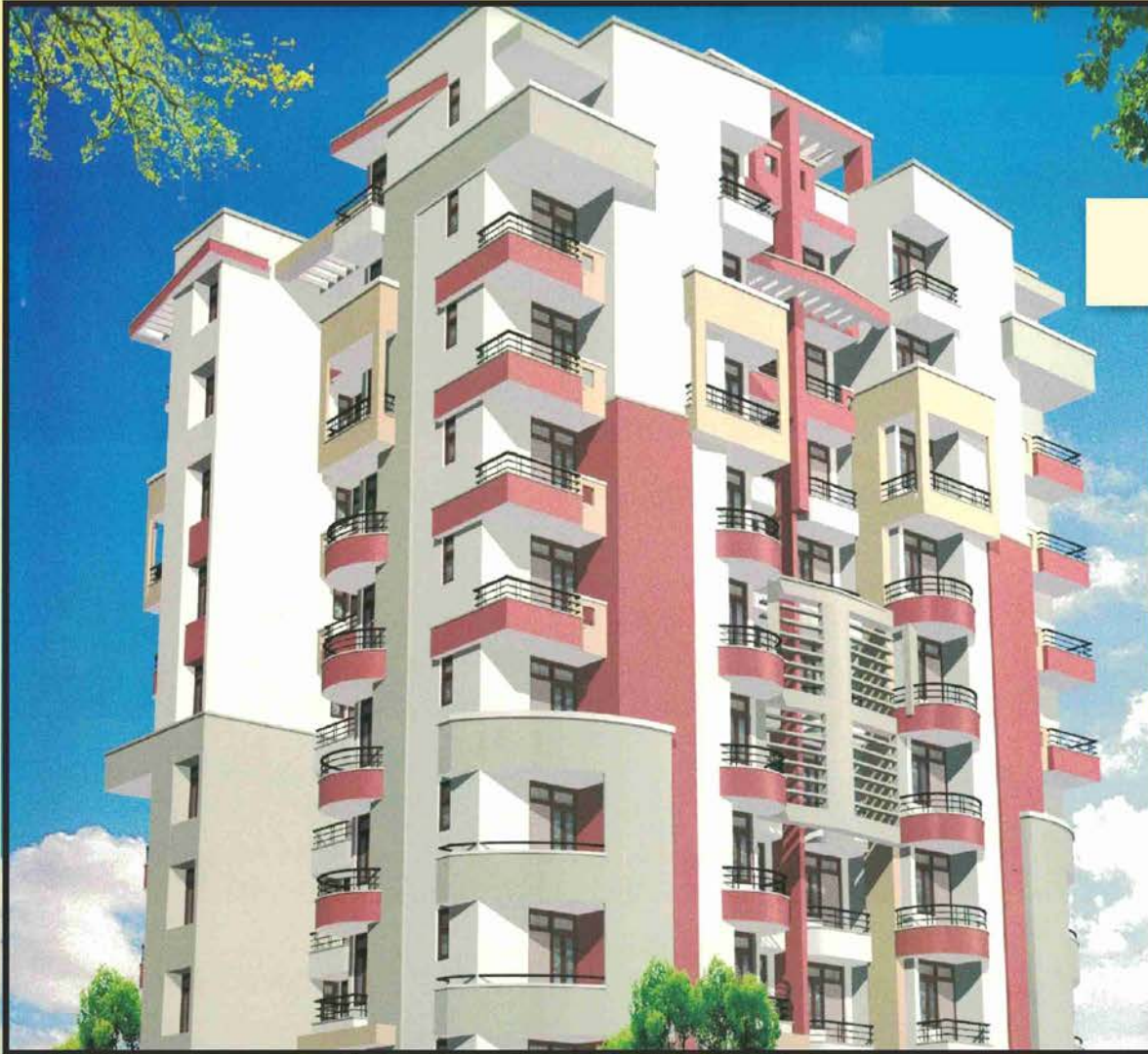
- Vastu Friendly.
- Cornish & Bedding in every Drawing/Dinning.
- Cable T.V. wiring in every flat.
- Telephone wiring in every room.
- Complete marble/vitrified tile/vc tile flooring.
- ISI CP fitting & sanitary wares in every room.
- Loan facility available from all leading banks.
- Provision for AC in every room.
- Ready for possession.
- Finishing of wall with quality paint with smooth POP base.

**Special Features**



**Gurupragnya**

Rajasthan's Fastest Growing Real Estate Group

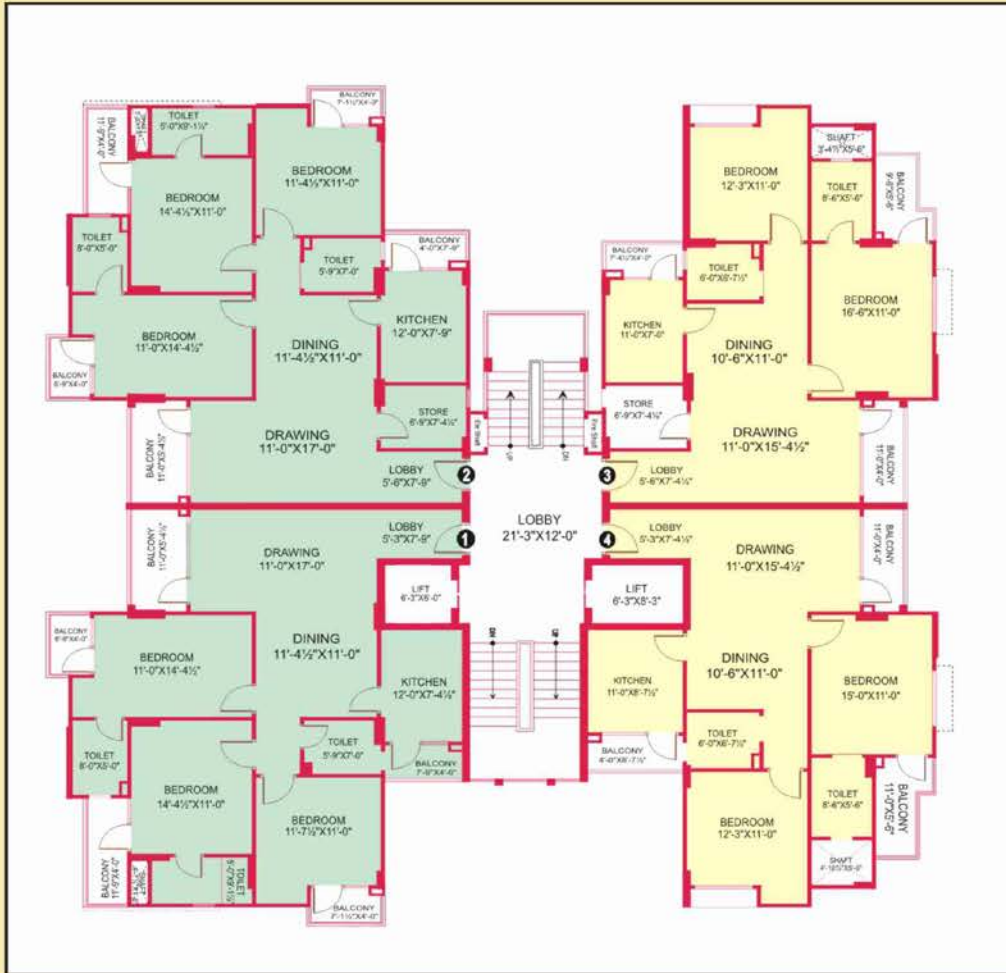


**BLOCK- A**



**Gurupragnya**

Rajasthan's Fastest Growing Real Estate Group



## Gurushikhar A

| Flat No. | Flat Type | Flat Area      |
|----------|-----------|----------------|
| 1        | 3BHK      | 1768.00 SQ.FT. |
| 2        | 3BHK      | 1850.00 SQ.FT. |
| 3        | 2BHK      | 1435.00 SQ.FT. |
| 4        | 2BHK      | 1365.00 SQ.FT. |



**Gurupragna**

Rajasthan's Fastest Growing Real Estate Group



**BLOCK- B & C**

### Location Highlights

- On National Highway No. 12.
- Distance 10 minutes from Sanganer International Airport.
- Sitapura Industrial Area at distance 5 minutes drive.

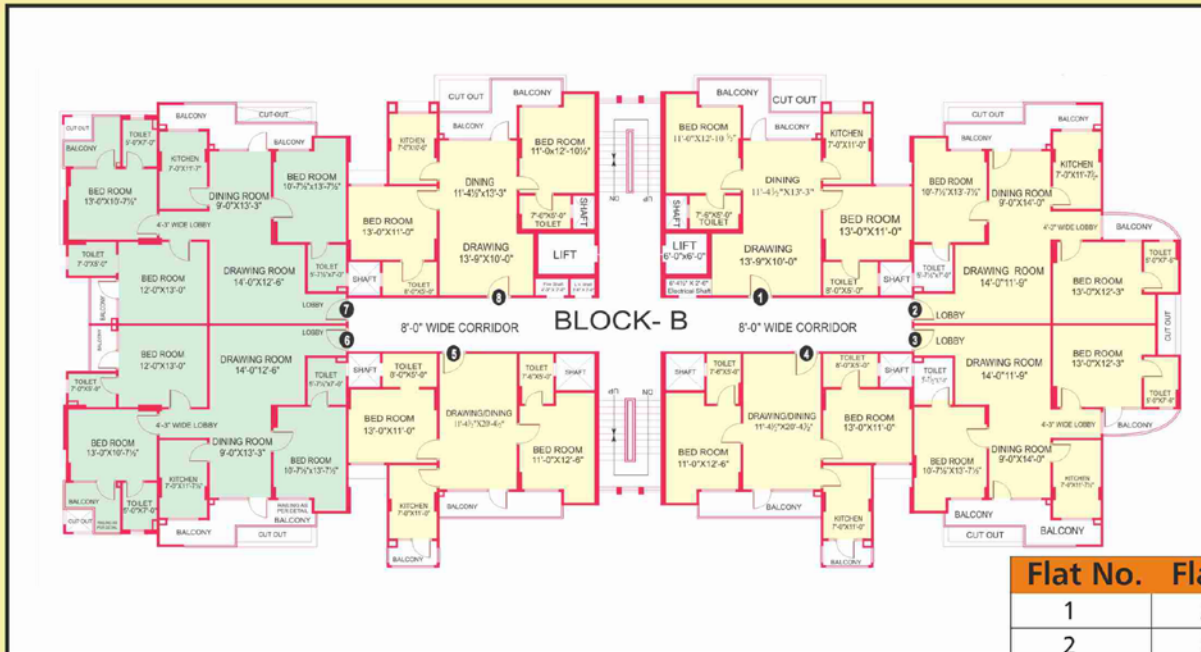


# Gurushikhar B & C Block



**Gurupragna**

Rajasthan's Fastest Growing Real Estate Group



| Flat No. | Flat Type | Flat Area      |
|----------|-----------|----------------|
| 1        | 2BHK      | 1200.00 SQ.FT. |
| 2        | 2BHK      | 1378.00 SQ.FT. |
| 3        | 2BHK      | 1378.00 SQ.FT. |
| 4        | 2BHK      | 1138.00 SQ.FT. |
| 5        | 2BHK      | 1138.00 SQ.FT. |
| 6        | 3BHK      | 1648.00 SQ.FT. |
| 7        | 3BHK      | 1648.00 SQ.FT. |
| 8        | 2BHK      | 1172.00 SQ.FT. |



**Gurupragnya**

Rajasthan's Fastest Growing Real Estate Group

**BLOCK-D**



**TYPICAL FLOOR PLAN**



*Gurushikhar* D

| Flat No. | Flat Type | Flat Area     |
|----------|-----------|---------------|
| 1        | 1BHK      | 677.00 SQ.FT. |
| 2        | 1BHK      | 599.00 SQ.FT. |
| 3        | 1BHK      | 595.00 SQ.FT. |
| 4        | 1BHK      | 595.00 SQ.FT. |
| 5        | 1BHK      | 677.00 SQ.FT. |
| 6        | 1BHK      | 677.00 SQ.FT. |
| 7        | 1BHK      | 595.00 SQ.FT. |
| 8        | 1BHK      | 595.00 SQ.FT. |
| 9        | 1BHK      | 599.00 SQ.FT. |
| 10       | 1BHK      | 677.00 SQ.FT. |



**Gurupragnya**

Rajasthan's Fastest Growing Real Estate Group



**BLOCK- E & F**



# Gurushikhar E & F Block



| Flat No. | Flat Type | Flat Area      |
|----------|-----------|----------------|
| 1        | 2BHK      | 1349.00 SQ.FT. |
| 2        | 2BHK      | 1072.00 SQ.FT. |
| 3        | 2BHK      | 1072.00 SQ.FT. |
| 4        | 3BHK      | 1833.00 SQ.FT. |
| 5        | 2BHK      | 1155.00 SQ.FT. |
| 6        | 2BHK      | 1155.00 SQ.FT. |



**Gurupragna**

Rajasthan's Fastest Growing Real Estate Group



**BLOCK- G**





**Gurupragnya**

Rajasthan's Fastest Growing Real Estate Group



TYPICAL FLOOR PLAN



## *Gurushikhar* G

| Flat No. | Flat Type | Flat Area      |
|----------|-----------|----------------|
| 1        | 3BHK      | 1924.00 SQ.FT. |
| 2        | 3BHK      | 1924.00 SQ.FT. |
| 3        | 3BHK      | 1924.00 SQ.FT. |
| 4        | 3BHK      | 1924.00 SQ.FT. |
| 5        | 3BHK      | 1924.00 SQ.FT. |
| 6        | 3BHK      | 1924.00 SQ.FT. |



**Gurupragna**

Rajasthan's Fastest Growing Real Estate Group

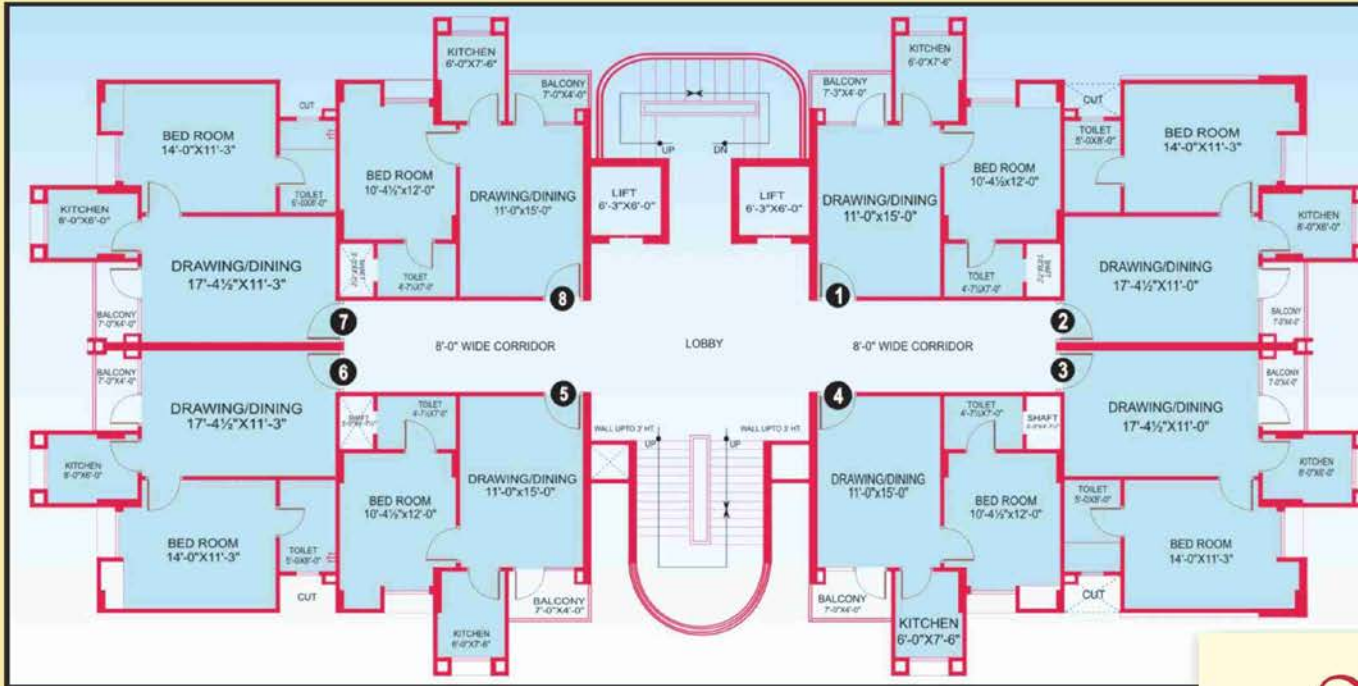


Actual View H-1



**Gurupragnya**

Rajasthan's Fastest Growing Real Estate Group



## Gurushikhar H



| Flat No. | Flat Type | Flat Area     |
|----------|-----------|---------------|
| 1        | 1BHK      | 578.00 SQ.FT. |
| 2        | 1BHK      | 677.00 SQ.FT. |
| 3        | 1BHK      | 677.00 SQ.FT. |
| 4        | 1BHK      | 587.00 SQ.FT. |
| 5        | 1BHK      | 587.00 SQ.FT. |
| 6        | 1BHK      | 677.00 SQ.FT. |
| 7        | 1BHK      | 677.00 SQ.FT. |
| 8        | 1BHK      | 578.00 SQ.FT. |





**Gurupragna**

Rajasthan's Fastest Growing Real Estate Group

*Gurushikhar* |



| Flat No. | Flat Type | Flat Area      |
|----------|-----------|----------------|
| 1        | 2BHK      | 1215.00 SQ.FT. |
| 2        | 3BHK      | 1675.00 SQ.FT. |
| 3        | 3BHK      | 1671.00 SQ.FT. |
| 4        | 2BHK      | 1270.00 SQ.FT. |
| 5        | 2BHK      | 1270.00 SQ.FT. |
| 6        | 3BHK      | 1671.00 SQ.FT. |
| 7        | 3BHK      | 1671.00 SQ.FT. |
| 8        | 2BHK      | 1190.00 SQ.FT. |



**Gurupragna**  
Rajasthan's Fastest Growing Real Estate Group



Actual View A-G



**Gurupragnya**

Rajasthan's Fastest Growing Real Estate Group

*Gurushikhar*

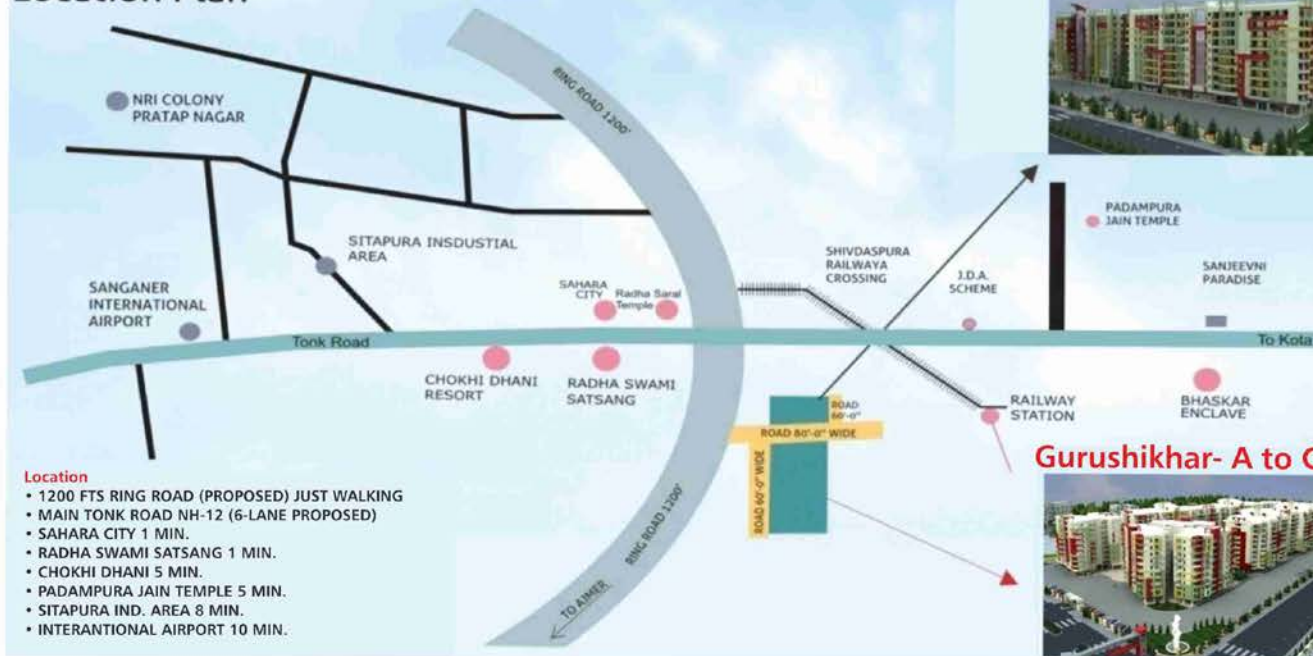
Premium Residential Flats

1, 2 & 3 BHK Apartments

Near Chokhi Dhani, Tonk Road, Jaipur

## Gurushikhar- H-I

### Location Plan



## Gurushikhar- A to G

BULDERS AND PROMOTERS

### GURU PRAGYA INFRA PVT. LTD.

111, Shiv Shakti Nagar, Kings Road , Ajmer Road, Jaipur • Tel : 0141 4005952, 5175952

visit us: [www.gurupragna.com](http://www.gurupragna.com) • E-mail: [info@gurupragna.com](mailto:info@gurupragna.com)

Architects: Mishra Garg & Associates

Our Marketing Associates

# Gurushikhar

Premium Residential Flats  
1, 2 & 3 BHK Apartments

## GuruPragya Infra Pvt. Ltd.

Ph.: 0141-4005952 Email : sales@gurupragya.com  
www.gurupragya.com

Rate (Per Sq. Ft.) : 2750/-  
Extra Charges (one time)

- 1.Club Membership – Rs. 50,000/- (Club Charges)
- 2.H. T. Line and Transformer charges – Rs. 50/- per Sq. Ft.
- 3.Parking - Covered Rs. 2,00,000/-
- 4.Registry & Service Tax applicable as per law.

Maintenance Charges: (After possession)- 1.00 Rupees per Sq.Fit Per Month  
Or

Rs 100/- per sq. ft for one time

### PAYMENT PLAN SCHEDULE-A (Only Loan Scheme)

| S. No. | Stage of Work      | Sale Value        |                       |
|--------|--------------------|-------------------|-----------------------|
| 1.     | On Booking of Flat | Booking Amount    | 10%                   |
|        |                    | Margin Amount     | 10% or Balance Amount |
| 2.     | Loan               | 80% (Approximate) |                       |

\*Terms and condition apply.

Cheque in favour of - Gurupragya Infra Pvt. Ltd.

Finance facility available by Leading Banks.



# Gurushikhar

Premium Residential Flats  
1, 2 & 3 BHK Apartments



## 2 BHK

| Block | Flat size | Rate | Total cost |
|-------|-----------|------|------------|
| B&C   | 1138      | 2750 | 3129500    |
| E&F   | 1155      | 2750 | 3176250    |
| B&C   | 1172      | 2750 | 3223000    |
| B&C   | 1190      | 2750 | 3272500    |
| I     | 1200      | 2750 | 3300000    |
| I     | 1270      | 2750 | 3492500    |
| B&C   | 1378      | 2750 | 3789500    |
| A     | 1435      | 2750 | 3946250    |

## 3 BHK

| Block | Flat size | Rate | Total cost |
|-------|-----------|------|------------|
| B&C   | 1648      | 2750 | 4532000    |
| I     | 1671      | 2750 | 4595250    |
| I     | 1675      | 2750 | 4606250    |
| A     | 1850      | 2750 | 5087500    |
| A     | 1768      | 2750 | 4862000    |
| E&F   | 1833      | 2750 | 5040750    |
| G     | 1924      | 2750 | 5291000    |

\* All Charges Extra