

[www.goldcrestresidency.com](http://www.goldcrestresidency.com)

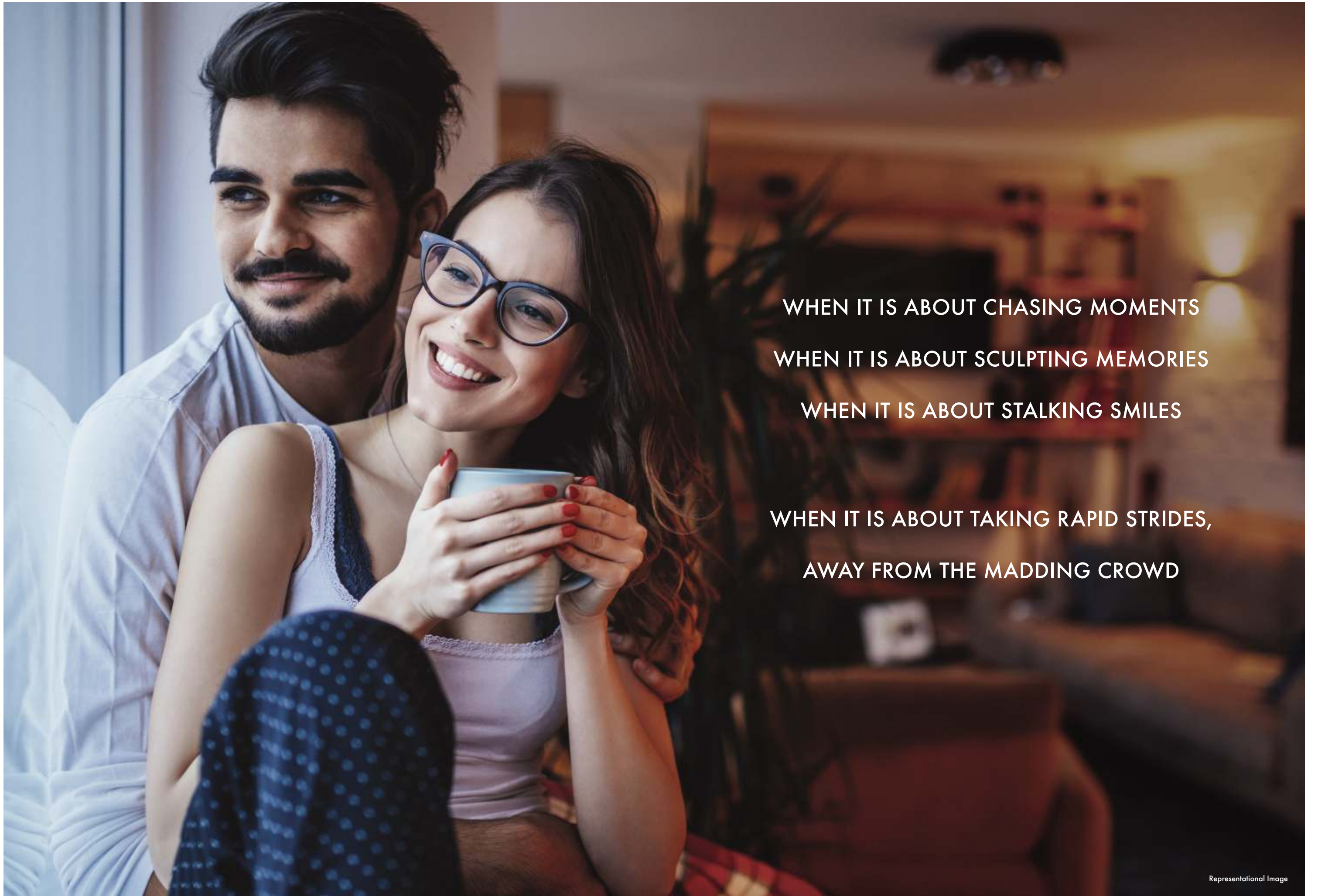


**GOLDCREST**  
RESIDENCY  
— GHANSOLI, NEW PALM BEACH ROAD —

*Welcome*  
**KHUSHIYAN  
INTO LIFE**


PREMIUM 1 & 2 BHK HOMES

GOLDCREST



WHEN IT IS ABOUT CHASING MOMENTS  
WHEN IT IS ABOUT SCULPTING MEMORIES  
WHEN IT IS ABOUT STALKING SMILES  
WHEN IT IS ABOUT TAKING RAPID STRIDES,  
AWAY FROM THE MADDING CROWD





WHEN IT IS ABOUT YOUR LOVED ONES  
WHEN IT IS ABOUT YOU  
THEN IT'S TIME TO UNLOCK THE GATEWAY  
THAT LEADS TO A LIFESTYLE  
THAT INSPIRES YOU TO

*welcome*  
**KHUSHIYAN  
INTO LIFE**

**WELCOME  
GOLDCREST INTO LIFE.**

The latest offering from Bhairav Group, GOLDCREST RESIDENCY is ensconced at Navi Mumbai, the melting-pot of opportunities. The strategic edge is an icing on the cake for this coveted residential address that boasts of amenities that are the touchstones of luxury and an out-of-the-world lifestyle. The GOLDCREST RESIDENCY offers a new perspective to life itself. It inspires you to welcome the most important ingredient into your life - Khushiyan.



**GOLDCREST**  
RESIDENCY

*Welcome*  
**KHUSHIYAN  
INTO LIFE**





STAY AWAY FROM THE CROWD

STAY ABOVE THE CROWD

STAY AHEAD OF THE CROWD

AND

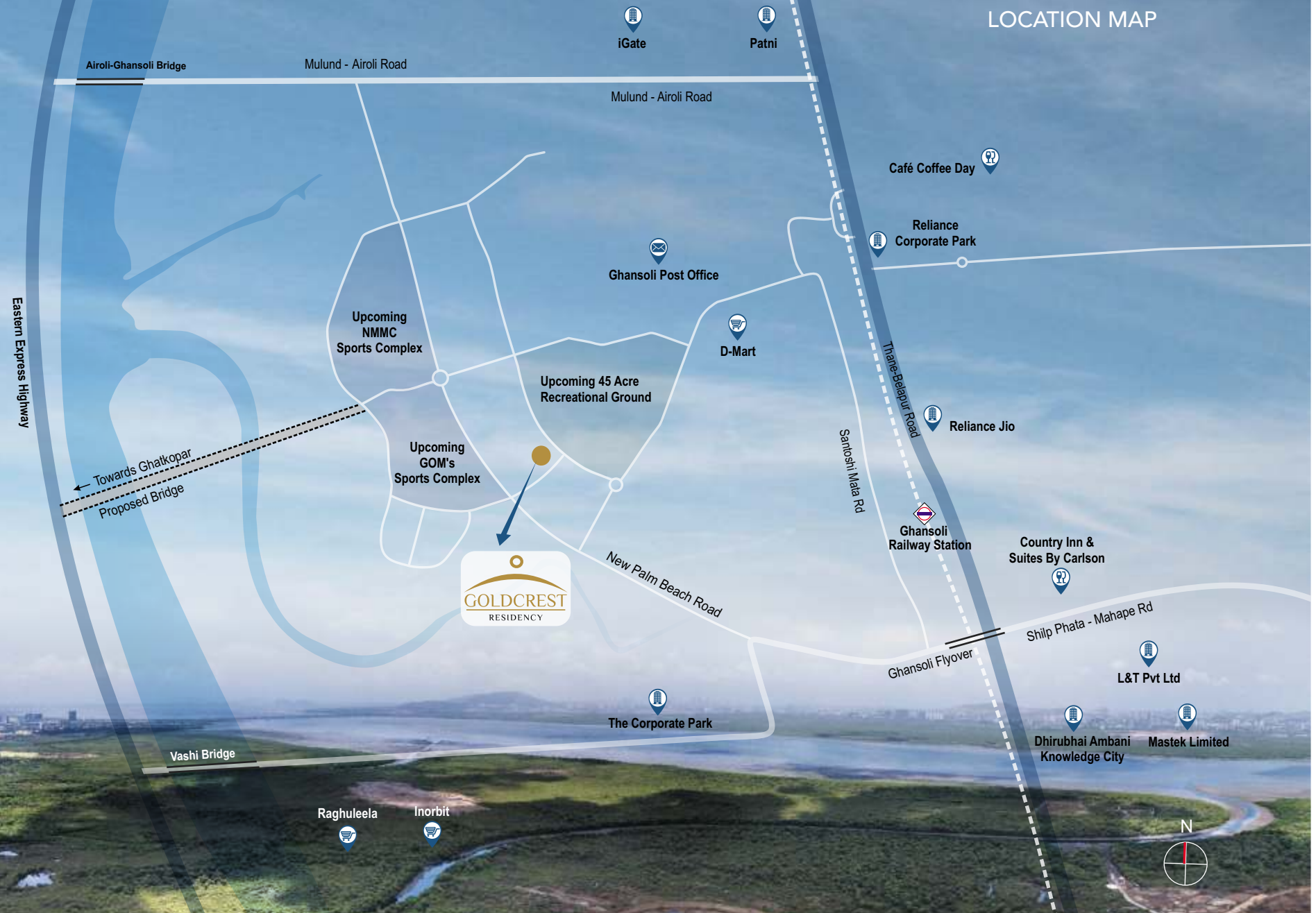
*welcome*  
**CONNECT  
INTO LIFE**

CONNECTIVITY  
AND CONVENIENCES

Couched in the heart of Navi Mumbai, GOLDCREST RESIDENCY is just a hop, skip and jump away from highways and railway terminus. Premium restaurants, state-of-the-art healthcare centres, multiplexes, shopping malls, corporate parks and elite educational institutions, among others, dot the neighbourhood.



CLOSE TO NATURE,  
CONNECTIVITIES  
AND LOCATIONAL  
CONVENIENCES



**PROXIMITY TO IT HUBS & MAJOR LANDMARKS:**

- Close to D-Mart, Inorbit & Raghuleela Mall.
- Renowned educational institutions are close by.
- Near hotels like Ramada, Courtyard and eateries like McDonald's.
- Well-known IT Parks, Dhirubhai Ambani Knowledge Centre, Mind Space, Millennium Business Park, etc., in close proximity.

**UPCOMING ATTRACTIONS:**

- NMMC & GOM'S Sports Complex – 150 acres
- Recreational Ground – 45 acres

**SUPERFAST CONNECTIVITY:**

- 5 Mins from Ghansoli railway station
- 10 Mins from Vashi & Palm Beach Road
- 10 Mins from Mulund
- Next to the proposed Ghatkopar-Ghansoli Link Road
- 10 Mins to Ghatkopar and 20 Mins to Powai
- 10 Mins from Airoli-Ghansoli Bridge

Note: Distances as per Google Map.



EXPERIENCE THE TRYST WITH

THE MAJESTIC WAVES

EXPERIENCE MOTHER NATURE'S CRADLE

EXPERIENCE ACRES OF SOLITUDE TO

LEARN PRICELESS LIFE LESSONS

AND

*welcome*  
**NATURE  
INTO LIFE**

GREEN LIVING

With the Arabian Sea as your neighbour and acres of green for company; owning a home at GOLDCREST RESIDENCY is a surefire reason for peers' envy and your pride. Nestled in the heart of Navi Mumbai, the august company of Mother Nature and the mighty waves act as the balm for the soul.



An aerial photograph showing a dense, lush green mangrove forest. A winding river or canal cuts through the forest, reflecting the sky. The water transitions from a dark blue in the mangroves to a lighter, turquoise blue as it flows towards the open sea. In the background, there are several islands and a large, prominent rock formation in the distance under a clear blue sky.

# UNINTERRUPTED NATURE VIEWS

LUSH GREEN MANGROVES  
AND REFRESHING BLUE WATERS



RECLAIM YOUR CHILDHOOD

FORGE FRIENDSHIP FOR LIFE

LIVE A LIFETIME IN A MOMENT


AND

*welcome*  
**SMILES  
INTO LIFE**

## PODIUM & RECREATION FEATURES

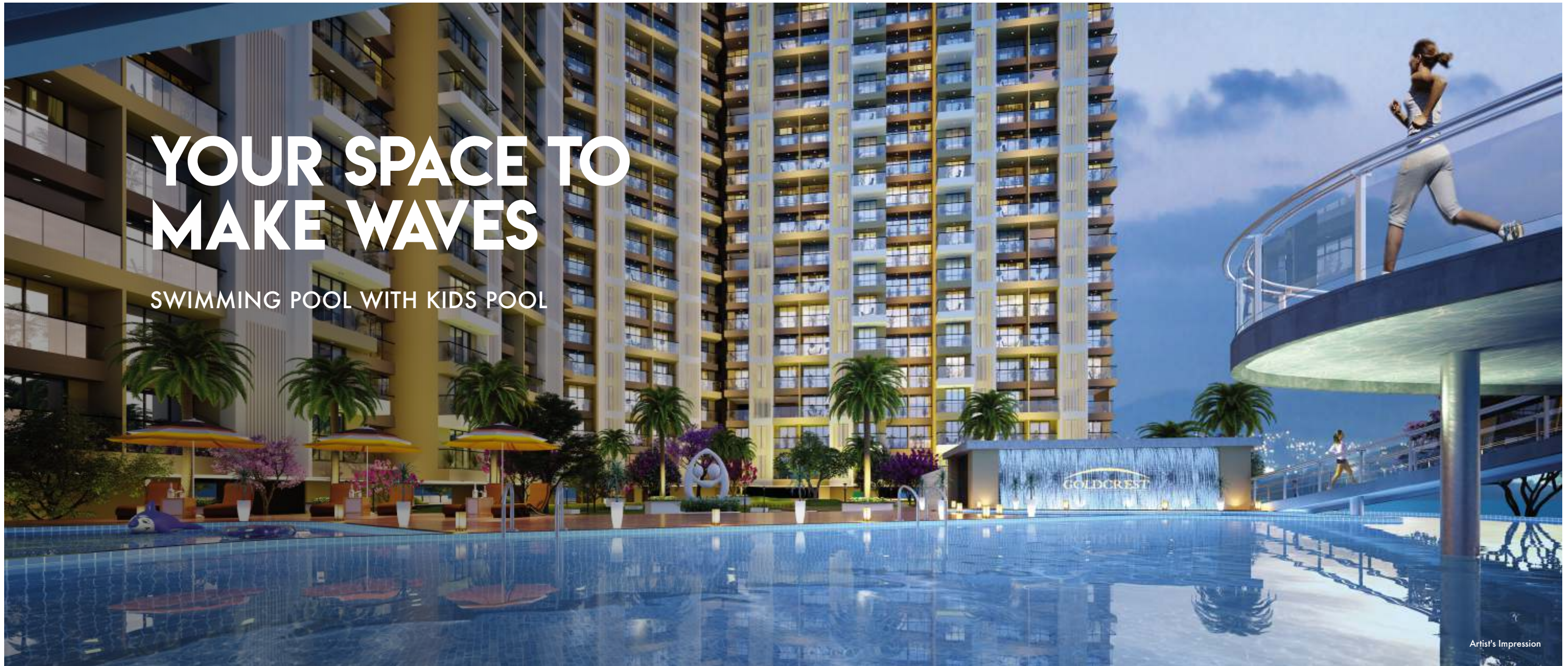
Work hard. Party harder. Play your heart out. Watch your children grow. Meet like-minded people. Turn neighbours into confidantes. Because; when you choose to call GOLDCREST RESIDENCY your home then the selfies aren't about flaunting the pout. They are the return ticket to the moments you create once you step in to experience our avant-garde amenities.





**60,000 SQ. FT. OF  
PODIUM RECREATION FACILITIES**





# YOUR SPACE TO MAKE WAVES

SWIMMING POOL WITH KIDS POOL

Artist's Impression



KID'S PLAY AREA WITH TODDLER ZONE

Artist's Impression



COMMUNITY BANQUET HALL  
PRE - FUNCTION AREA, GUEST ROOM & PARTY HALL

Artist's Impression



GET THE COVETED EIGHT PACKS

FLAUNT THE HOUR-GLASS FIGURE

SWEAT AND SCULPT YOURSELF

AND

*Welcome*  
**HEALTH  
INTO LIFE**

**HEALTH &  
WELLNESS AVENUES**

Shed those extra calories and turn yourself into a Greek God or the diva, to set the mercury soaring. The state-of-the-art gymnasium at GOLDCREST RESIDENCY helps you add years to your life by inspiring you to adopt a healthy lifestyle. And in case you are a connoisseur of indoor sports then we have a plethora of offerings for you.





# SOOTHE YOUR SENSES

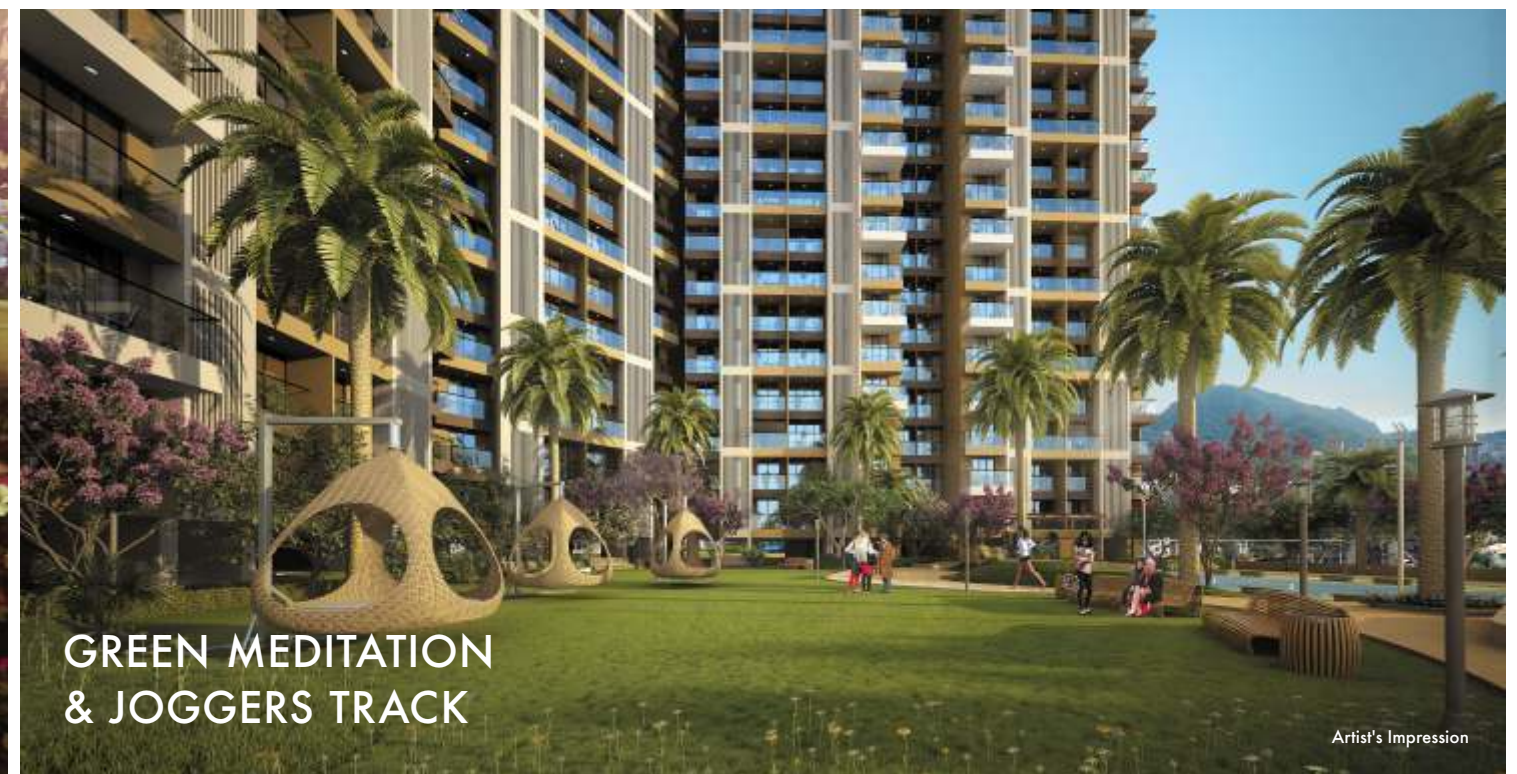
WORLD CLASS SPA WITH  
SAUNA & JACUZZI

Representational Image



HERBAL GARDEN WITH  
ORGANIC PLANTATIONS

Artist's Impression



GREEN MEDITATION  
& JOGGERS TRACK

Artist's Impression



A modern gymnasium with a wooden ceiling and large windows overlooking a park at dusk. The gym features several treadmills, a stationary bike, and a red exercise ball. The text "SCULPT YOURSELF" is overlaid on the image.

# SCULPT YOURSELF

STATE-OF-THE-ART GYMNASIUM



PLAY THE GAME THAT BUILDS YOU

PLAY IT TO THE HILT

PLAY THE WAY ONLY YOU CAN

AND

*Welcome*  
**ENERGY  
INTO LIFE**

ACTIVE &  
FUN ZONE

Let your inner energy be the steroid of your life. Harness your inner energy with our plethora of sporting facilities that will keep you young. There's no such thing as the fountain of youth. And if there's one then that's here. Experience it to believe it.



An aerial night-time rendering of a rooftop sports and leisure complex. The central feature is a basketball court with a blue floor and white court lines, surrounded by a glass safety fence. To the left of the basketball court is a cricket pitch with a green artificial turf surface. In the background, there is a swimming pool with lounge chairs and a circular observation deck with people. The entire area is landscaped with palm trees, other tropical plants, and colorful flowers. The scene is illuminated by warm, ambient lighting, creating a vibrant and inviting atmosphere.

# BE ON THE TOP OF YOUR GAME

MULTIPURPOSE COURT &  
CRICKET PITCH

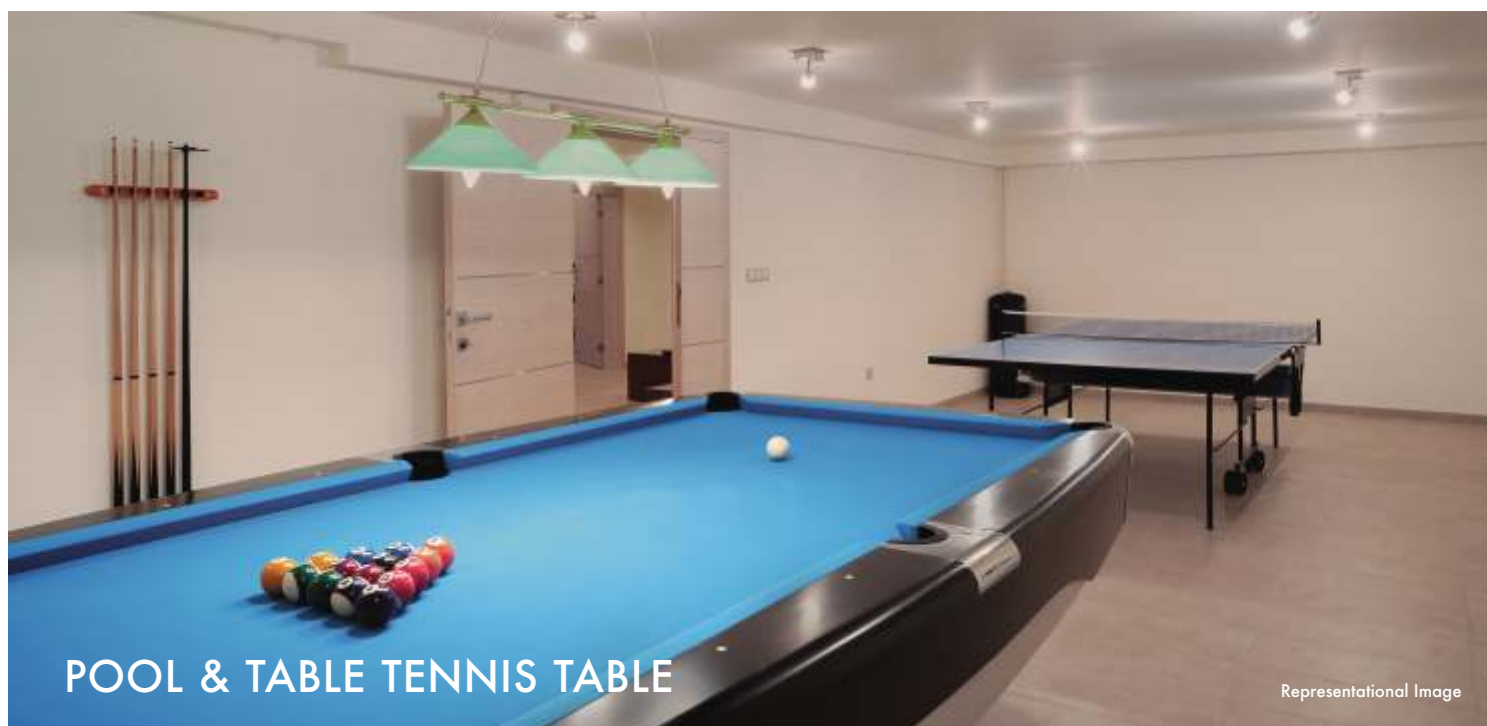


# WHEN LIFE IS ONE ROLLER SKATE RIDE

SKATING RINK



Representational Image



POOL & TABLE TENNIS TABLE

Representational Image



CARROM BOARD

Representational Image



SEIZE THE DAY

COLLECT EXPERIENCES

INSPIRE BENCHMARKS

AND

*Welcome*  
**LUXURY  
INTO LIFE**

APARTMENT & TOWER  
FEATURES

Our condominiums are the cradles of unputdownable luxury. From avant-garde sanitary ware to cutting-edge floorings, we have ensured that you have the finest lifestyle experiences.

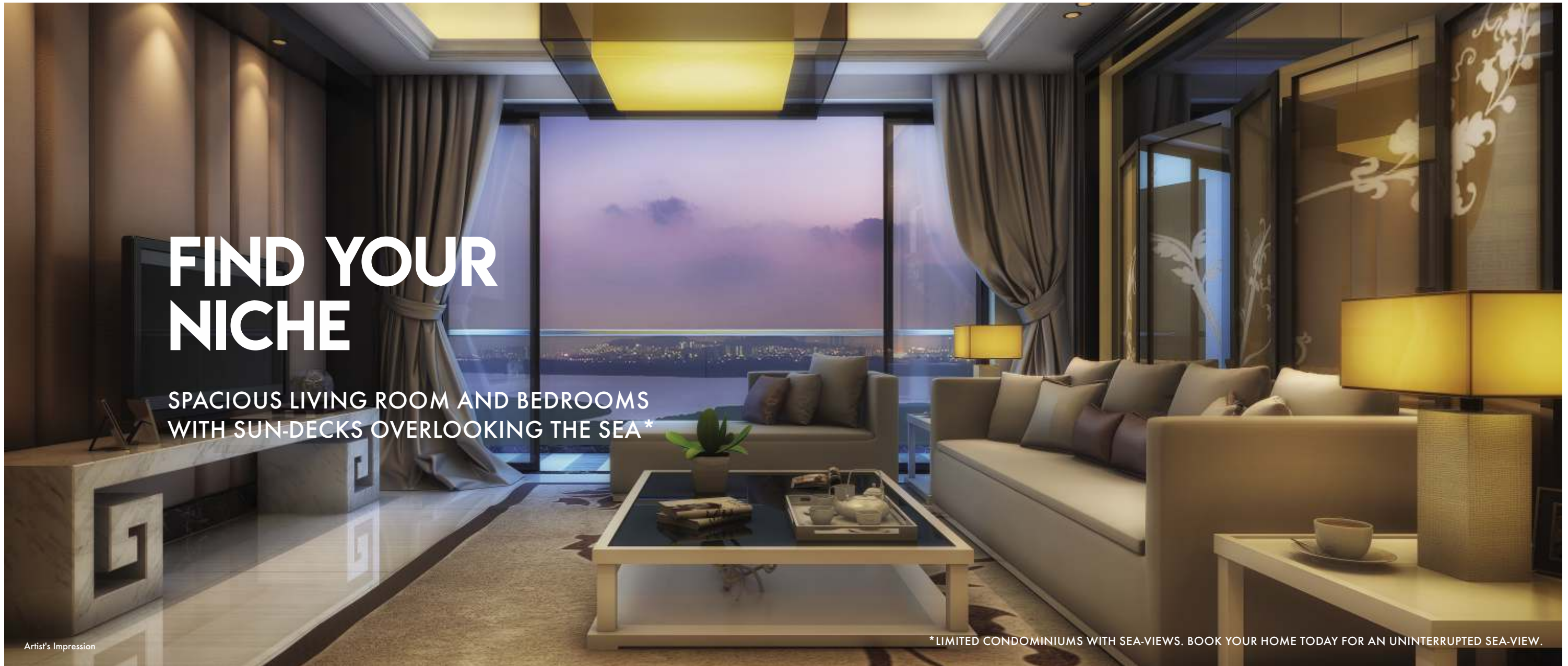




# THE WORLD AT YOUR FEET

GRAND ENTRANCE LOBBY WITH  
24 X 7 SECURITY & CCTV





# FIND YOUR NICHE

SPACIOUS LIVING ROOM AND BEDROOMS WITH SUN-DECKS OVERLOOKING THE SEA \*

Artist's Impression

\*LIMITED CONDOMINIUMS WITH SEA-VIEWS. BOOK YOUR HOME TODAY FOR AN UNINTERRUPTED SEA-VIEW.



MODULAR KITCHEN WITH INTERNATIONAL QUALITY EMBELLISHMENTS

Representational Image



DESIGNER BATHROOMS WITH BRANDED, 5 FIXTURE SANITARY WARE

Representational Image





## GOLDCREST RESIDENCY - AT A GLANCE

### PROJECT HALLMARKS:

- Vastu Compliant 1 & 2 BHK Residences with breath-taking sea-views
- 5 Majestic Towers of G+28 Storeys
- 60,000 Sq. Ft. of Landscaped Podium Garden
- Well decorated Entrance Lobby for each building
- Ultra-modern Club House & Gymnasium
- Swimming Pool with Kids Pool Section and Overlooking Deck
- Herbal Garden
- Kids Play Area (outdoor) with viewing balcony for parents.
- Covered Open-air, Children's Play Area.
- Skating Rink
- Jogging Track
- Exclusive Senior Citizens' Zone
- Organized Open-air Library
- Open-air yoga and meditation zone, lawn tennis court
- Indoor Play Area – TT Table, Pool Table, Carrom, Chess etc.
- Ample Parking Space
- Organic Waste Converter System
- Sewage Treatment Plant
- Adequate lighting in Common Area
- Generator back-up for Club House, Lifts and Common areas (Essential Services)
- Solar Water Heating System

### ELEVATORS:

- Hi-speed Elevators in each Wing – 2 Passenger
- 1 Service Lift

### INTERNAL SPECIFICATIONS

#### STRUCTURE:

- Earthquake Resistant Structure
- Construction with advance Aluminium form work system
- Rain Water Harvesting
- IGBC Certified Green building

#### PAINTING

- Externally finished with texture & acrylic paint.
- Internally finished with gypsum and plaster

#### LIVING ROOM:

- Adequate lighting in common areas
- Generator back-up for Club House, Lifts and Common areas
- Inverter connection in every apartment
- Solar water heating system

#### KITCHEN:

- Modular Kitchen
- Designer Platform with Stainless steel sink
- Designer Wall tiles

#### FLOORING, DOORS & WINDOWS:

- 800 x 800 Vitrified tiles in all rooms and Anti-skid tiles in attached terrace area
- Wooden Flooring in one master bedroom
- Moulded shutter with polish/enamel paint
- Wooden Laminated Flush doors in every room
- Anodised aluminium French windows with Marble /Granite window frames

#### SANITARY FITTINGS:

- Concealed plumbing with hot and cold water mixer
- Classy sanitary fittings- Jaguar or equivalent make
- High quality sanitary wares with wash basin and water closet

#### ELECTRICAL:

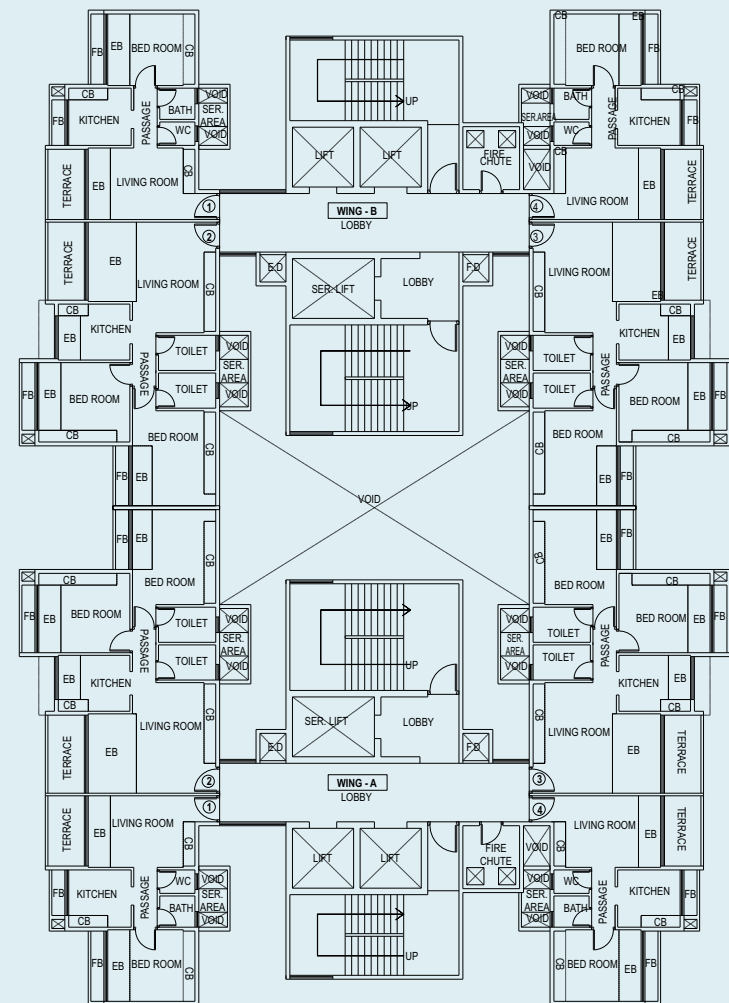
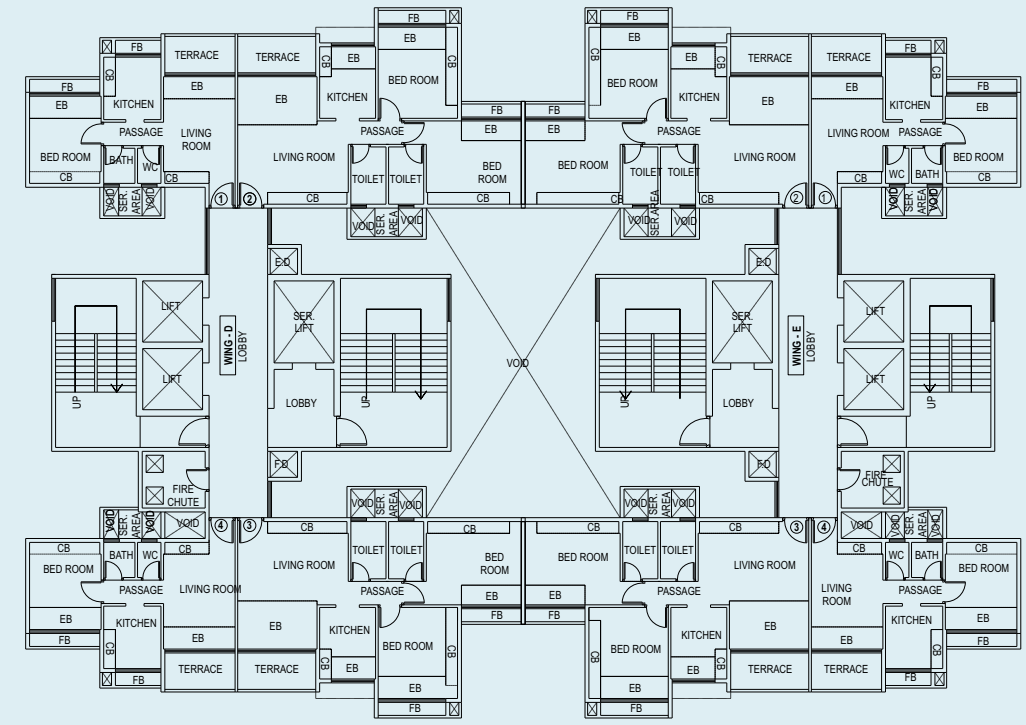
- Branded ISI mark, electrical switches
- MCB and Phase changers
- Concealed wiring in copper conductor with adequate number of points
- One AC point in all bedrooms and living room
- TV points in all bedrooms and living room



# TYPICAL ODD FLOORS LAYOUT PLAN

5<sup>TH</sup>, 7<sup>TH</sup>, 9<sup>TH</sup>, 13<sup>TH</sup>, 15<sup>TH</sup>, 17<sup>TH</sup>, 19<sup>TH</sup>, 23<sup>RD</sup> & 25<sup>TH</sup>

WINGS - A, B, C, D & E

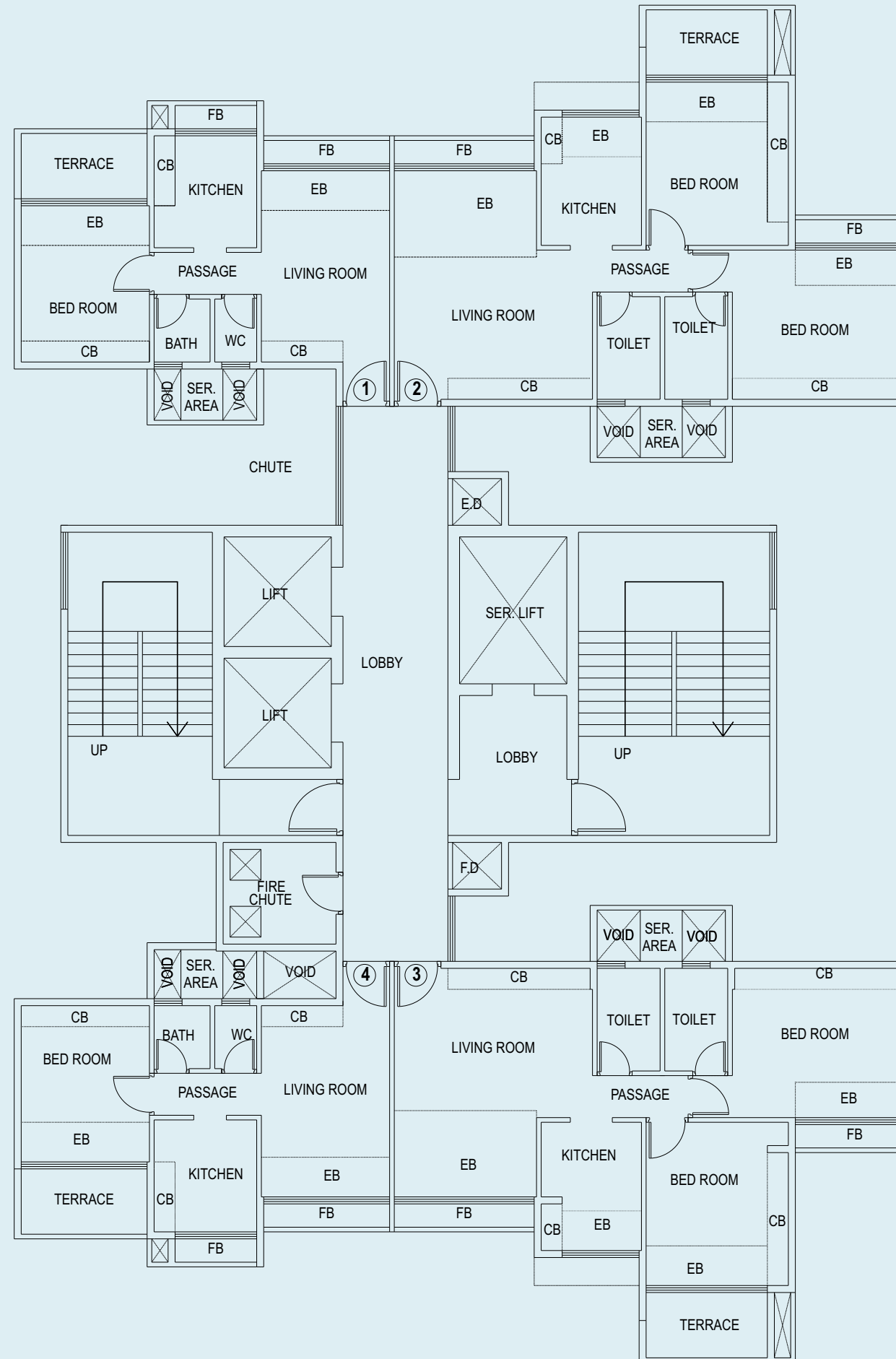




# TYPICAL ODD FLOORS

5<sup>TH</sup>, 7<sup>TH</sup>, 9<sup>TH</sup>, 13<sup>TH</sup>, 15<sup>TH</sup>, 17<sup>TH</sup>, 19<sup>TH</sup>, 23<sup>RD</sup> & 25<sup>TH</sup>

WINGS - A, B, D & E

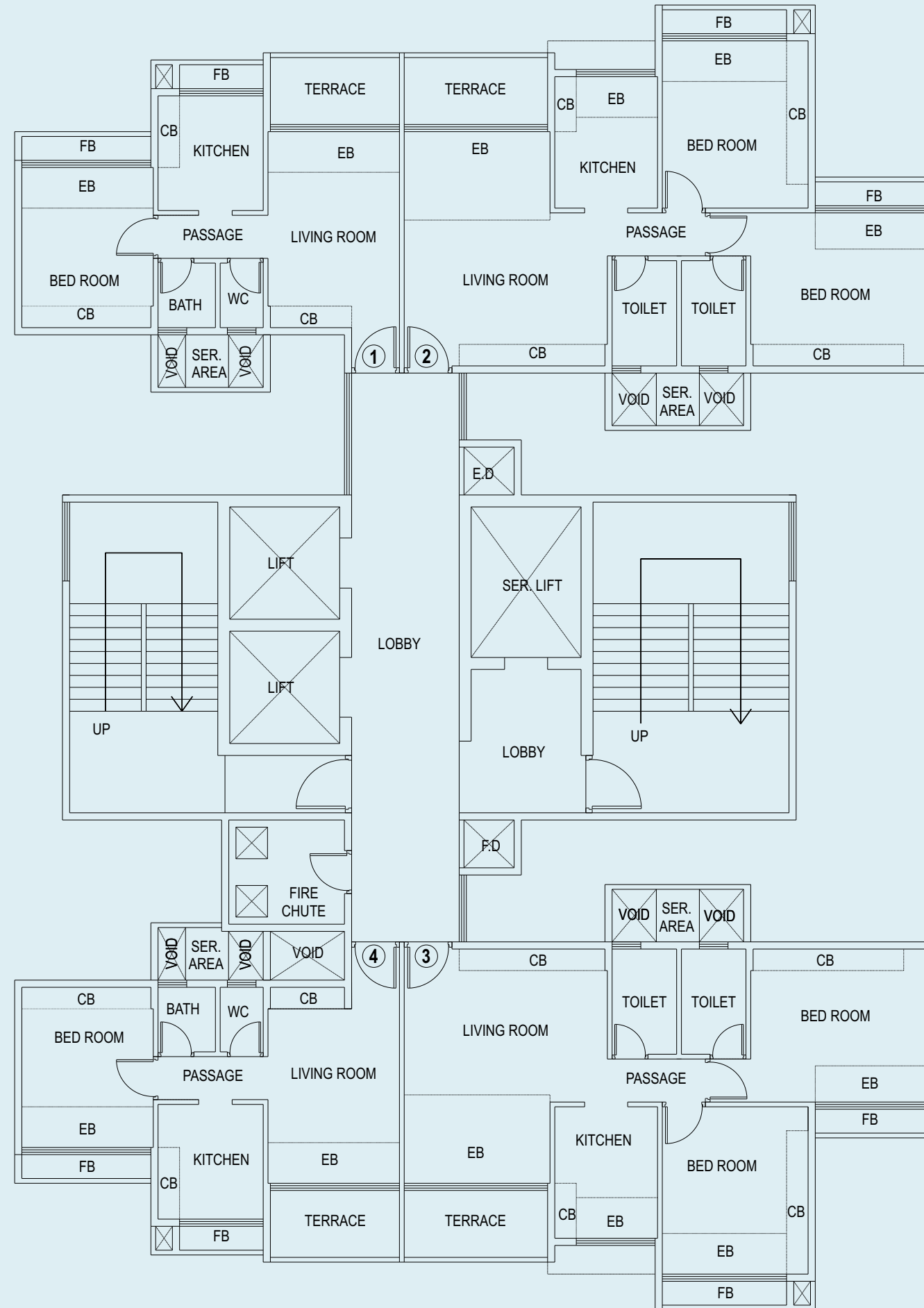




# TYPICAL EVEN FLOORS

4<sup>TH</sup>, 8<sup>TH</sup>, 10<sup>TH</sup>, 12<sup>TH</sup>, 14<sup>TH</sup>, 18<sup>TH</sup>, 20<sup>TH</sup>, 24<sup>TH</sup>, 26<sup>TH</sup> & 28<sup>TH</sup>

WINGS - A, B, D & E

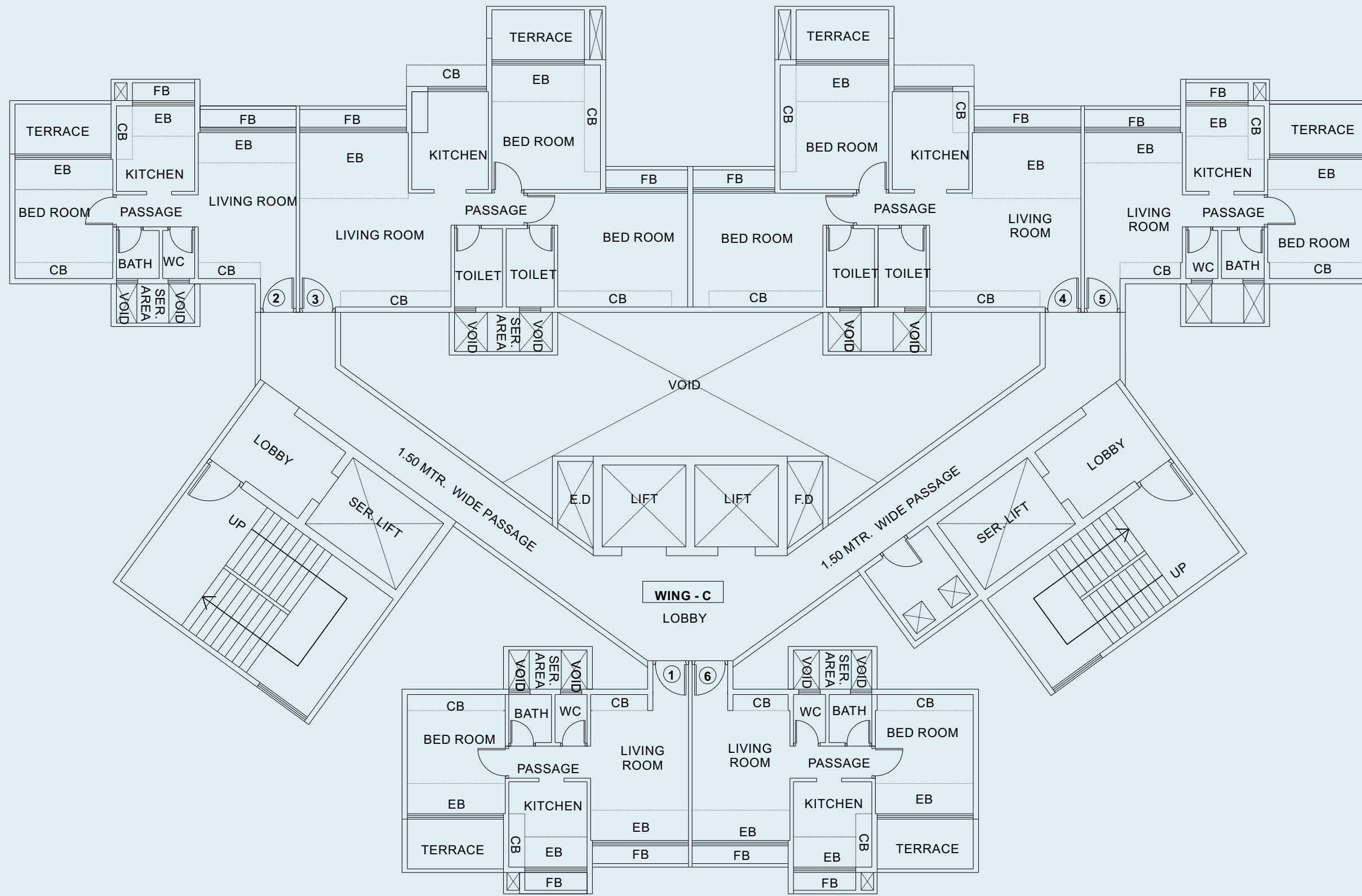




# TYPICAL ODD FLOORS

5<sup>TH</sup>, 7<sup>TH</sup>, 9<sup>TH</sup>, 13<sup>TH</sup>, 15<sup>TH</sup>, 17<sup>TH</sup>, 19<sup>TH</sup>, 23<sup>RD</sup> & 25<sup>TH</sup>

## WINGS - C

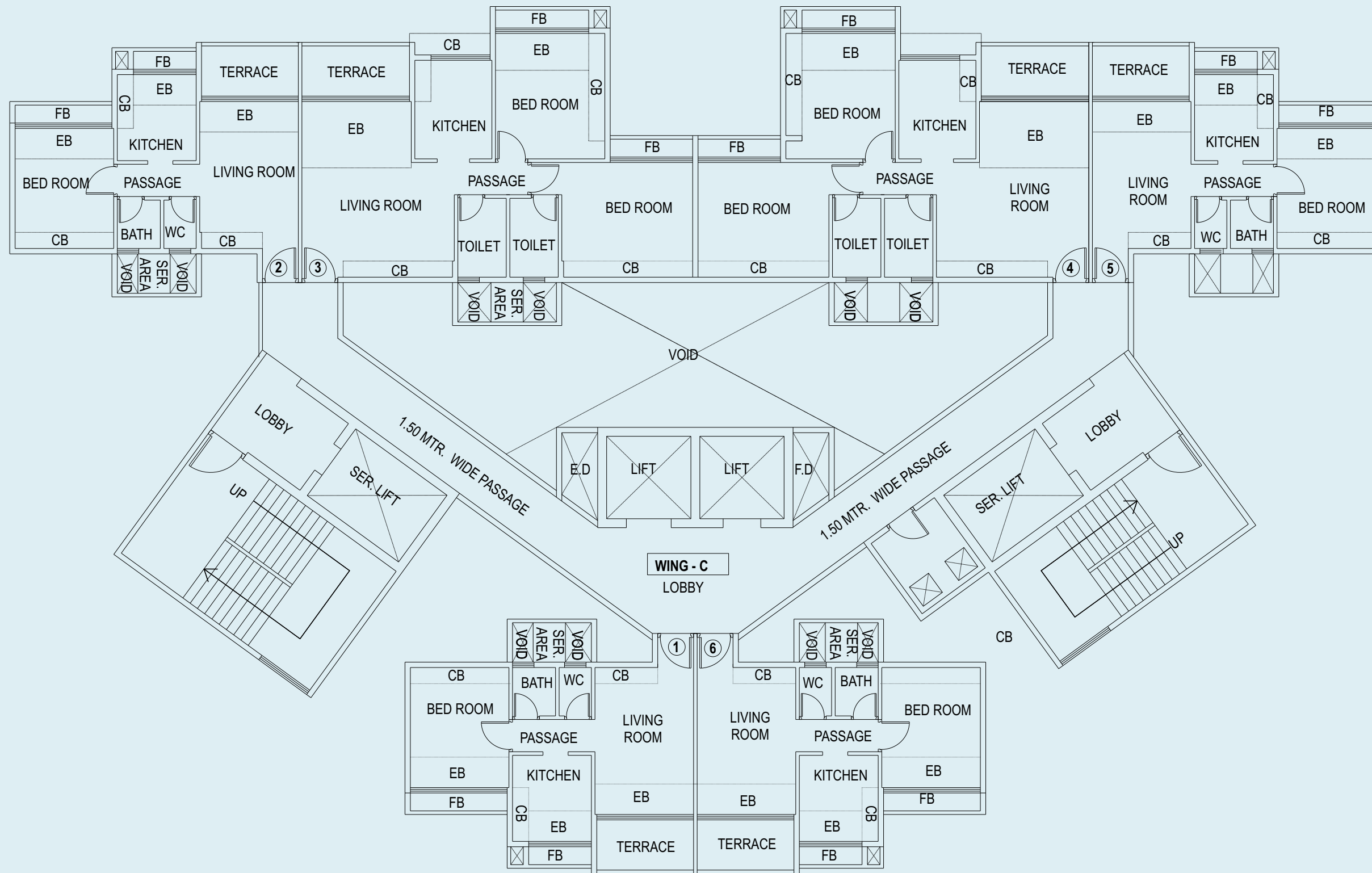




# TYPICAL EVEN FLOORS

4<sup>TH</sup>, 8<sup>TH</sup>, 10<sup>TH</sup>, 12<sup>TH</sup>, 14<sup>TH</sup>, 18<sup>TH</sup>, 20<sup>TH</sup>, 24<sup>TH</sup>, 26<sup>TH</sup> & 28<sup>TH</sup>

## WINGS - C







## ADDING THE STARDUST

### ARCHITECT - **MR. SOYUZ TALIB**

Soyuz Talib Architects has earned its stripes through excellence in Architectural Planning & Interior Design, Services. Pillared by an ace team, the firm always gives its best through 'Design'.

#### Landmark Projects:

- Redevelopment of Air India & Indian Airlines Staff Quarters, Nerul for Akshar
- Samraat Tropicano, Nashik for Samraat Group
- Imperial Heights, Ghansoli for Satyam Builders

### STRUCTURAL ARCHITECT - **MR. RAJESH LADHAD**

Led by Rajesh Ladhad, Structural Concept Designs Pvt. Ltd. exhibits innovative engineering designs in commercial, retail, residential, warehouse/industrial, community, sports & educational buildings as well as apartments & single family residences.

#### Landmark Projects:

- Elerro Fiesta, Sanpada (Commercial)
- Techno Park Turbhe, Navi Mumbai
- Kesar Solitaire, Sanpada (Residential)
- Faurecia Bhosari, Pune

### LANDSCAPE ARCHITECT - **MR. HRISHIKESH PHADKE**

Hrishikesh Phadke's 'Newarch Landscape LLP' is renowned for Open Space Design Solutions. With projects delivered in India and overseas, its services include Landscape Designing & Project Management, Master Planning, Landscape Lighting Design and Feasibility & ROI Design.

#### Landmark Projects:

- Lodha Grandeur, Mumbai
- Raj Exotica, Thane
- Pinnacle Dreams, Indore
- Parks: Malad Public Park & KDMC Park, Kalyan

### CONTRACTOR - **TECHNO INFRACON**

With 28 plus years of rock solid experience, Techno Infracon takes pride in being associated with star developers. Also, the company is among the leading names for civil work & finishing like electrical, plumbing, carpentry and paint works.

#### Landmark Projects:

- Hiranandani Estate & Rustomjee, Thane
- Hard Rock, BPCL & Delhi Public School, Nerul
- Nirmal Lifestyles & Runwal Infinity, Mulund
- Unnathi & Adhiraj Garden, Kharghar

Disaster Management Plan: KESARI GROUP OF COMPANIES



# A LEGACY OF ABSOLUTE INTEGRITY

COMPLETED PROJECTS

BHAIRAAV DARSHAN - PAREL, MUMBAI



FOUR SEASONS - VASHI, NAVI MUMBAI



JUPITOR - AIROLI, NAVI MUMBAI



PARSHWA PADMA - LALBAUG, MUMBAI



MADHUBAN - LALBAUG, MUMBAI



EDEN - MARINE LINES, MUMBAI



THE CORPORATE PARK - VASHI, NAVI MUMBAI



BHAIRAAV HOUSE - LALBAUG, MUMBAI



MILESTONE - THANE



BLOSSOM - BKC, MUMBAI



BHAIRAAV SIGNATURE - CBD BELAPUR



# A GLIMPSE OF A BETTER TOMORROW

ON-GOING PROJECTS

OUR UPCOMING PROJECTS AT

- LALBAUG
- BHANDUP
- MANKHURD





## BHAIRAAV GROUP THE EPITOME OF LIFESTYLE AND QUALITY

Bhairaav Group was established in the year 1972 by Chairman Shri Madan Jain. After a successful stint in the garment industry, the Group forayed in to real estate at the turn of the 21<sup>st</sup> century. Today the Group is counted amongst one of the most promising real estate developers in Mumbai and Navi Mumbai.

Since its inception, the company has grown from strength to strength and flourished over the years through sheer hard work, dedication and commitment to quality.

Diversification was a welcome step to expand and progress. This led the Group in to real estate, by clinching strategic land deals and constructing several multi-storied apartments comprising contemporary world-class amenities, common to all its projects, to suit a modern and trendy lifestyle.

Bhairaav Housing Corporation Limited, the Realty Division of the Bhairaav Group, is acknowledged for quality constructions and transparency in its dealings. The Group has, till date, successfully completed over 1.5 million sq. ft. of development and has about 5 million sq. ft. of constructions, under various stages of execution. Also, the Group is steadily forging ahead to create its own niche in the Real Estate Industry.

With foresight, strong vision and able support of its team of dedicated professionals, the Group is poised to launch many more innovative projects.





[www.goldcrestresidency.com](http://www.goldcrestresidency.com)



Corp. Off.: Bhairaav Group, Bhairaav House, Dattaram Lad Marg, Opp Hakoba Center, Off. Lalbaug, Mumbai - 400 033.

Site Add.: Plot 7, Sector 11, New Palm Beach Road, Ghansoli, Navi Mumbai - 400 701. | **CALL: 90710 51518**



MahaRERA Registration No.: Phase I - P51700012365 / Phase II - P51700010579 (<https://maharera.maha.online.gov.in>)

Disclaimer: Specifications and amenities mentioned in this brochure/advertisement and promotional documents are only representational and informative and information, images and visuals, drawings plans or sketches shown in this advertisement and other promotional documents are only an architect's impression and are only indicative of the envisaged development and the same are subject to approvals from local authorities. The Developer reserves rights to make additions, deletions, alterations or amendments, as and when in deems fit and proper without any prior notice. No representation or warranty is made or intended as to the accuracy or completeness of information and no commitment are being given under this brochure/advertisement/ promotional document or as to its suitability or adequacy for any purpose or otherwise howsoever. All dimensions mentioned in the drawings may vary/ differ due to construction contingencies and site conditions. Actual product/development and any other aspect may differ from what is portrayed herein. All layouts, plans, specifications, dimensions, designs, measurement and locations are indicative and not to scale and are subject to change as may be decided by the company or competent authority. Revision, alteration, modification, addition, deletion, substitution or recast, if any, may be necessary during construction. The picture of the proposed Residential flats and all furniture's, items, electronic goods (if any), amenities etc. specified therein are only for the purpose of show casing the Residential flat and the Developer is not liable/ required to provide any furniture, items, electronic goods, amenities etc. as displayed in the picture, Furniture, fixture, landscaping amenities or accessories, as may be shown in this brochure, are not provided with the Residential flat. All intending purchaser/ s are bound to inspect all plans and approvals and apprise themselves of all plans and approvals and other relevant information and nothing in this brochure/advertisement or other document is intended to substitute to the intending purchaser the actual plans and approvals obtained from time to time. The relationship between the Developer and the actual customers will be governed strictly by the agreements to be executed from time to time and not on the terms of this brochure / Advertisement or other promotional document. The material does not constitute any offer and / or contact of any nature. The views shown in the picture are as available at the time of printing this material and any changes in the views are beyond the control of the developer hence they may vary from period of time. The pictures are artistic / graphical depictions only. Map/s are not to scale. Maps and Distances taken in Kilometers are approximate and taken from Google maps for information purpose only. The content of this published material is indicative and may / may not form part of the final project. All details and prices quoted are indicative and have been calculated on basic rate. The management holds no responsibility for accuracy. This brochure is not a legal document and we reserve the right to change, amend and modify the contents and shall not be liable to any intending Purchaser or any one for the changes / alterations / improvements so made.