



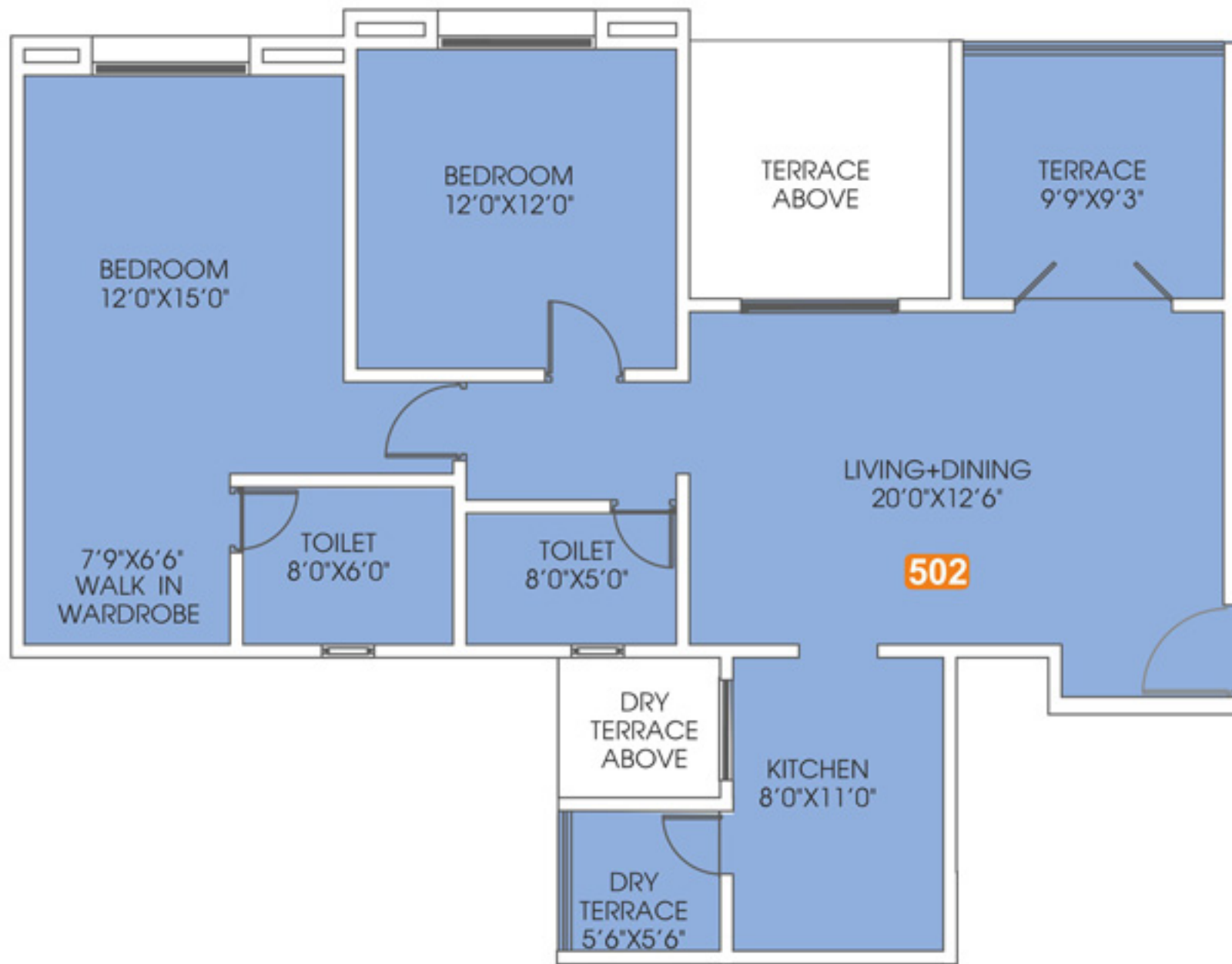


4TH 6TH 8TH 10TH FLOOR PLAN



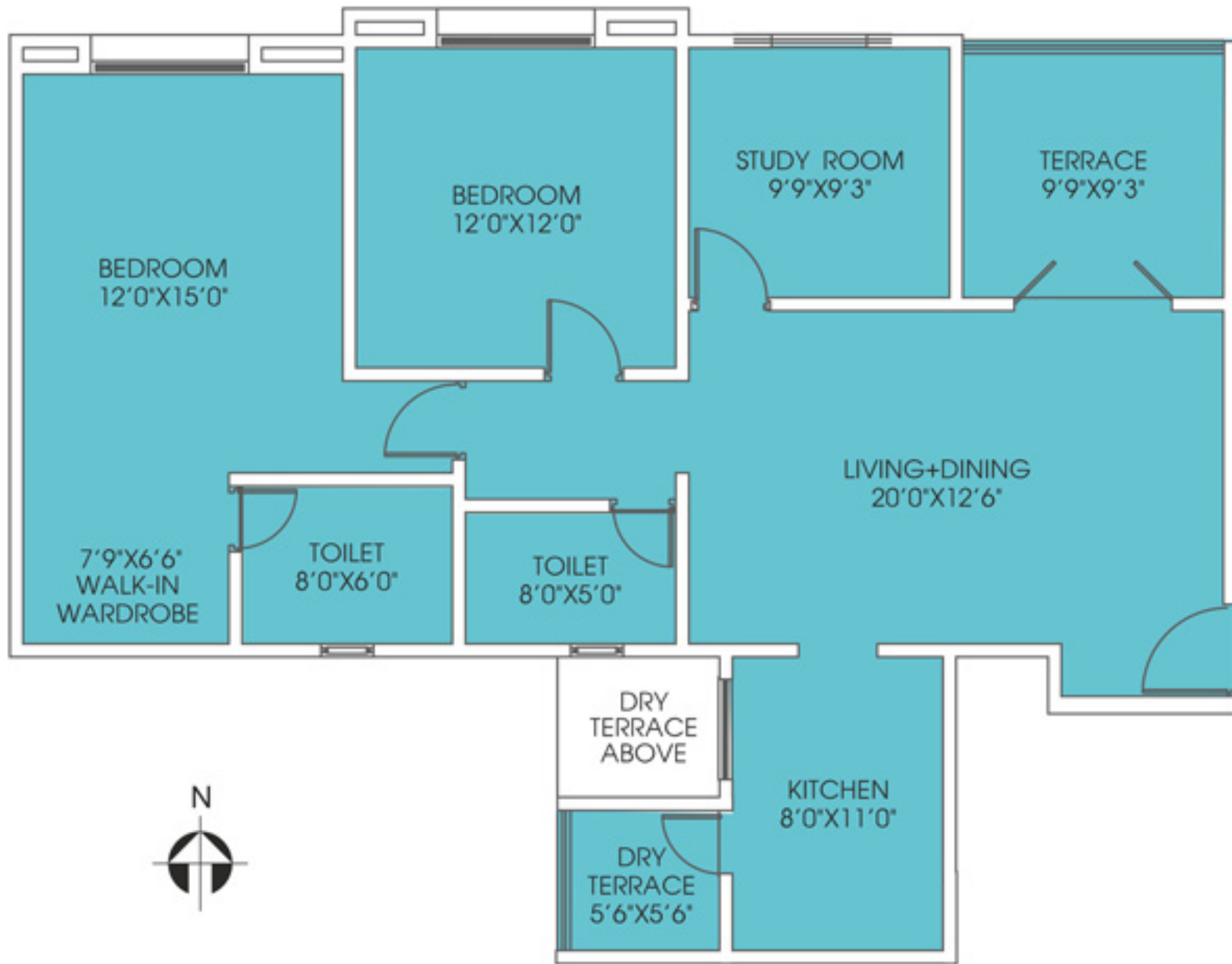
2 BHK Premium Apartments
 Carpet Area including Enclosed Balcony : 911 SQ.FT
 and Attached Terrace: 119 SQ.FT

5TH 7TH 9TH 11TH FLOOR PLAN



2 BHK Premium Apartments
Carpet Area including Enclosed Balcony : 905 SQ.FT
and Attached Terrace: 119 SQ.FT

2ND & 3RD FLOOR PLAN



2.5 BHK Premium Apartments
Carpet Area including Enclosed Balcony : 1008 SQ.FT
and Attached Terrace: 119 SQ.FT



PHASE 1 - LAYOUT





























