

MANNAT



PRESENTING
YOUR NEW HOME
AT
**NEW
JAIPUR**



YOUR NEW ADDRESS FOR YOUR NEW HOME, THE 'NEW JAIPUR'.

Unique Mantra promises to be your New Home where bliss will sprout right at your doorsteps. And your New Home has a perfect address, the 'New Jaipur'.

What better way to address the 'hub of Jaipur's premium development' Jagatpura, than the 'New Jaipur? This South-Eastern region of the Pink City has emerged as a promising landmark for socio-economic development. With ultra-modern life structuring rapidly and opportunities emerging fastly, Jagatpura has become the epicentre of all the development. The future of Jaipur.

While being at New Jaipur, no one can miss out on life's moment as anything and everything is right within the reach like:

- World-class Educational Institutes and Schools
- Top-class Medical Facilities and Health Care Centres
- Airport, Railway Station & Bus Services
- Retail and Recreational Centres
- Top Corporate and Govt. Offices

unique
MANTRA
YOUR NEW HOME

When you rewrite your life and make it move closer towards better days, you have arrived in life. You are where you want to be and are enjoying the real comforts, while basking in the hub of Jaipur's primetime development. You will feel the difference and realize how you have succeeded in rewriting your life. You have your home at one of the most admired addresses in the city.

At Unique Mantra, re-write your life and fill it with new hopes. Your ambition in life grows positively. Stand tall on the road to a new future. **Live a life of utter bliss.**

- With your home at Unique Mantra, you are at one of Jagatpura's tallest Buildings.
- You enjoy the best of comforts and have all facilities that you face as a challenge in day to day life.
- You are in the hub of Jaipur's primetime development.
- You have your home at one of the most admired addresses in the city.
- Your home balances modern lifestyle and convenient traditional life.
- You lead a peaceful life and also enjoy immediate connectivity to all local facilities and the city center.
- Unique Mantra has some of the best educational institutes, malls, restaurants and multiplexes within short distance.
- With the airport just minutes away, it's an ideal residence for high flyers.
- A project with special features and services that change your day to day lifestyle and help you manage your daily need much better.

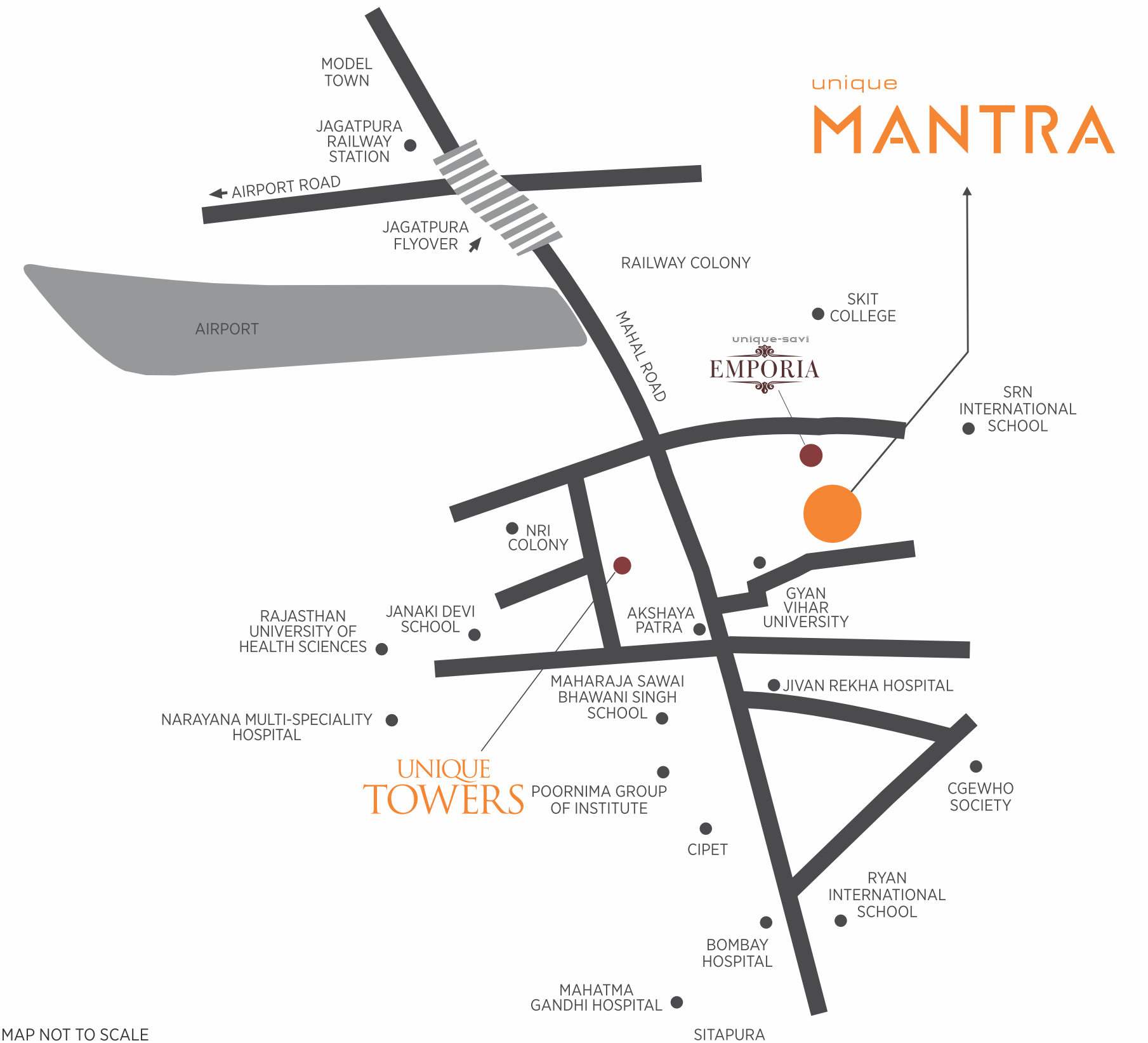
LOCATION MAP

A HOME @ NEW JAIPUR, YOU CAN'T AFFORD TO MISS.

Homes like these don't come quite often, and that too at such a location. With everything approachable and within your reach, you will have ample of time for yourself, family and life.

Location Advantages:

<p>HOSPITALS</p> <hr/> <p>EDUCATIONAL INSTITUTES</p> <hr/> <p>JAGATPURA RAILWAY STATION</p>	<p>APEX CIRCLE</p> <hr/> <p>SITAPURA INDUSTRIAL AREA</p> <hr/> <p>TONK ROAD</p>	<p>AIRPORT</p> <hr/> <p>SHOPPING MALLS</p> <hr/> <p>JLN MARG</p>	<p>JAIPUR RAILWAY STATION</p> <hr/> <p>SINDHI CAMP BUS STAND</p>
 <p>5 MINS</p>	 <p>10 MINS</p>	 <p>15 MINS</p>	 <p>20 MINS</p>



A Bouquet of Gardens



NATURE GARDEN



REFLEXOLOGY GARDEN

WHEN YOUR GARDENS ARE DESIGNED BY THE WORLD'S BEST

OPEN GREEN SPACES TO CHEER YOU UP

Life at Unique Mantra will fill your heart with happiness every morning and all during the day. The beauty of your surroundings will relax your senses.

The landscaping and the gardens have been creatively designed for Unique Mantra by one of the world's finest brands in the sector, Belt Collins, Singapore. The reputation of the landscape designers has been awarded internationally.

Belt Collins, Singapore have completed over 16,000 projects in 70 countries around the world since their inception in 1953.



SINGAPORE

MASTERPIECES
BY BELT COLLINS

- Vegetable Garden
- Nature Garden
- Herb & Spice Garden
- Fragrance Garden
- Oculus Water Feature
- Reflexology Garden
- Jungle Gym

ONE THE TALLEST BUILDINGS IN NEW JAIPUR



*Shown image is for reference purpose only

Unique Mantra is one of the tallest set of Buildings in New Jaipur and it ensures you views that one cannot compare with. The windy apartment concept keeps good air flow around and soothes you. Add purity & passion to your life. Feel on top of the world. The feeling gets even better when you are sitting at our beautiful and epic, sky terrace gardens.



*Shown image is for reference purpose only

A LIFE, THAT'S TRULY "BLISSFUL"

Unique Mantra fills your life with some of the best facilities and services.

Technology, infrastructure and security add up to make your 'World Class' lifestyle feel complete.

- Presence of almost every needful facility within the premises itself
- You will be left with lot of time to indulge and experience the world class features present for you at Unique Mantra.



DECK AREA



EVENING SITTING VIEW



CLUB GARDEN VIEW



- Thematic spaces and playgrounds for the kids along with cricket nets, jogging tracks, indoor sports in the kids' clubroom to keep your little ones constructively busy.
- Magical ambiance and refreshment at the pool.
- Healing and soulful spa experiences.
- Community pavilion
- Temple
- Community celebration lawn
- Outdoor Lounge
- Walk path & seating area
- Picnic area
- Outdoor Cinema
- Sky meditation area
- Senior citizens outdoor gym and club corner with table games
- Tea pavilion
- Roof top putting greens
- Music room
- Banquet Hall



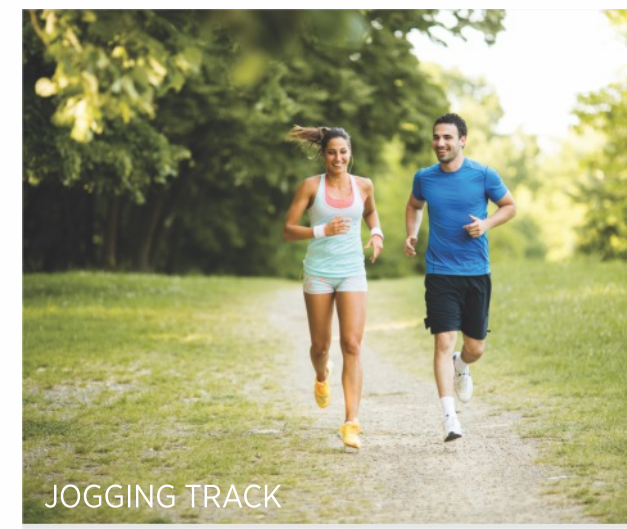
PLAY AREA



BREAKFAST TERRACES



KIDS POOL



JOGGING TRACK



CRICKET PITCH



ROOF TOP PUTTING GREEN



POOL TABLE

EXCLUSIVE CLUB sands

The one area dedicated to make sure you enjoy your evenings is the Club House. Have parties, chat up with friends, enjoy at the pool table or practice your passion at the music room. The Club House at Unique Mantra is equipped with all things fun.

- Club House Outdoor Function Area
- Club House Private Party Area
- Relaxing Area
- Reading Area
- Gymnasium
- Music Room
- Indoor Games
- Yoga Deck
- Reflexology Path
- Table Tennis Room
- Badminton Court



SKY MEDITATION AREA



MUSIC ROOM



CLUB HOUSE ENTRY

*Shown images are for reference purpose only

*Shown images are for reference purpose only

HOMES LIKE NO OTHER

Your home at Unique Mantra takes care of your every possible need. The rooms are very spacious and the concept of windy apartments keeps your home fresh all the time with very good light and air flow.

What makes Unique Mantra feel as a 'home' like no other?

Reading corners that give you peace, privacy and concentration to both you and your children.

Special emphasis on cross ventilation and light.

Designer vitrified flooring in living and dining areas.

Luxury sanitary fittings and designer tiles in all bathrooms.

Homes with a very practical layout.



DRAWING ROOM



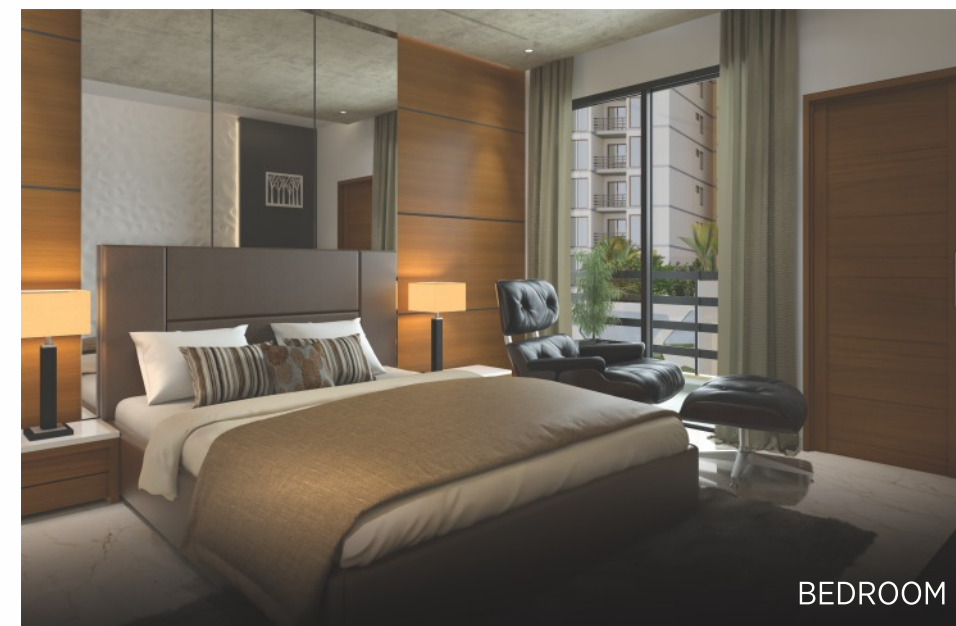
KITCHEN



BEDROOM



BEDROOM










BEDROOM

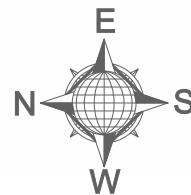









DINING

*Shown images are for reference purpose only

COLOUR CODE	FLAT TYPE	CONFIGURATION	SALEABLE AREA	CARPET AREA
	3BHK A	3BHK+3T	1078.81 SQ.FT.	645.60 SQ.FT.
	3BHK B	3BHK+2T	977.25 SQ.FT.	622.26 SQ.FT.
	3BHK C	3BHK+2T	961.24 SQ.FT.	603.07 SQ.FT.
	3BHK D	3BHK+2T	1062.39 SQ.FT.	645.60 SQ.FT.
	3BHK E	3BHK+2T	1050.77 SQ.FT.	645.60 SQ.FT.
	2BHK A	2BHK+2T	833.87 SQ.FT.	524.89 SQ.FT.
	1BHK A	1BHK+1T	507.74 SQ.FT.	322.28 SQ.FT.

GROUND FLOOR PLAN



COLOUR CODE	FLAT TYPE	CONFIGURATION	SALEABLE AREA	CARPET AREA
	3BHK A	3BHK+3T	1078.81 SQ.FT.	645.60 SQ.FT.
	3BHK B	3BHK+2T	977.25 SQ.FT.	622.26 SQ.FT.
	3BHK D	3BHK+2T	1062.39 SQ.FT.	645.60 SQ.FT.
	3BHK E	3BHK+2T	1050.77 SQ.FT.	645.60 SQ.FT.
	3BHK F	3BHK+2T	1019.34 SQ.FT.	645.20 SQ.FT.
	2BHK A	2BHK+2T	833.87 SQ.FT.	524.89 SQ.FT.
	1BHK A	1BHK+1T	507.74 SQ.FT.	322.28 SQ.FT.

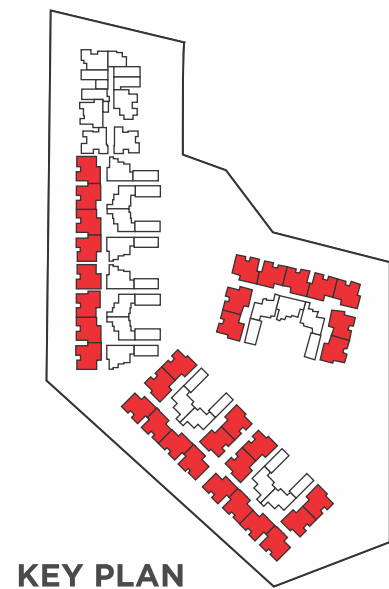
TYPICAL FLOOR PLAN



UNIT PLAN



3 BHK - TYPE A	
SALEABLE AREA	1078.81 SQ.FT
CARPET AREA	645.60 SQ.FT



KEY PLAN

UNIT PLAN



3 BHK - TYPE B	
SALEABLE AREA	977.25 SQ.FT
CARPET AREA	622.26 SQ.FT



KEY PLAN

UNIT PLAN



3 BHK - TYPE C	
SALEABLE AREA	961.24 SQ.FT
CARPET AREA	603.07 SQ.FT

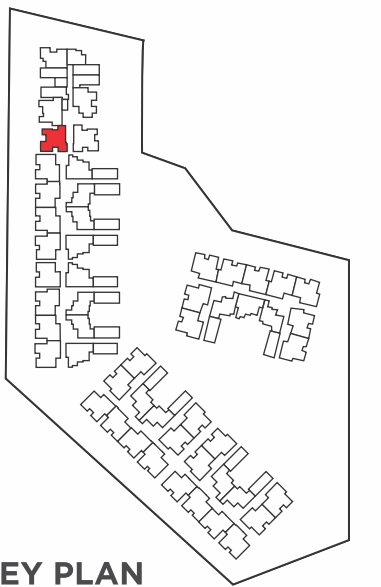


KEY PLAN

UNIT PLAN



3 BHK - TYPE D	
SALEABLE AREA	1062.39 SQ.FT
CARPET AREA	645.60 SQ.FT

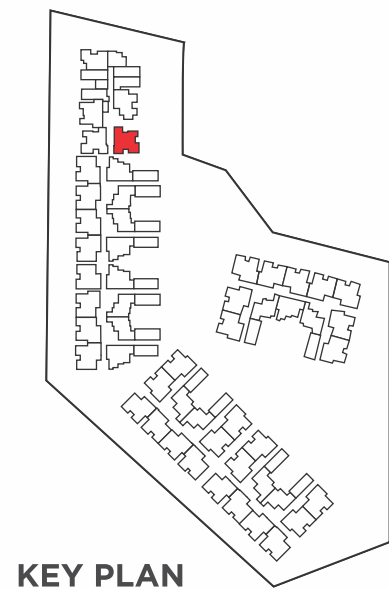


KEY PLAN

UNIT PLAN



3 BHK - TYPE E	
SALEABLE AREA	1050.77 SQ.FT
CARPET AREA	645.60 SQ.FT

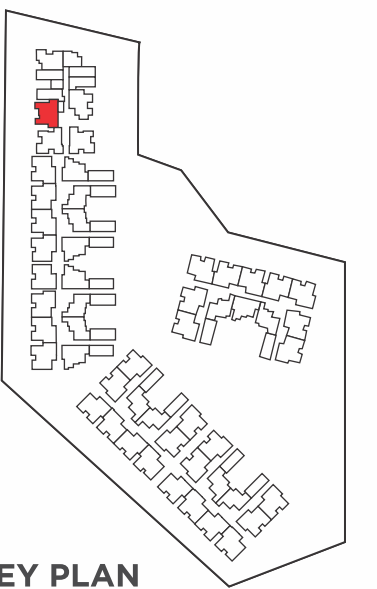


KEY PLAN

UNIT PLAN



3 BHK - TYPE F	
SALEABLE AREA	1019.34 SQ.FT
CARPET AREA	645.20 SQ.FT



KEY PLAN

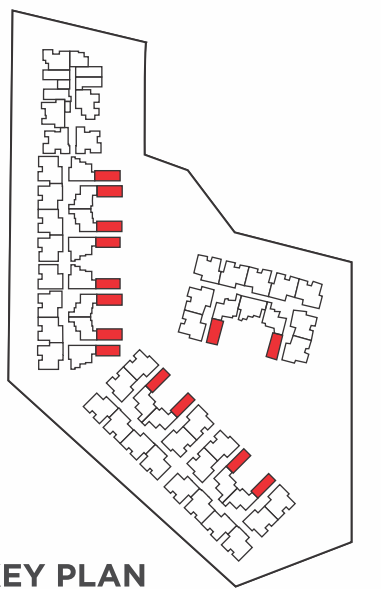
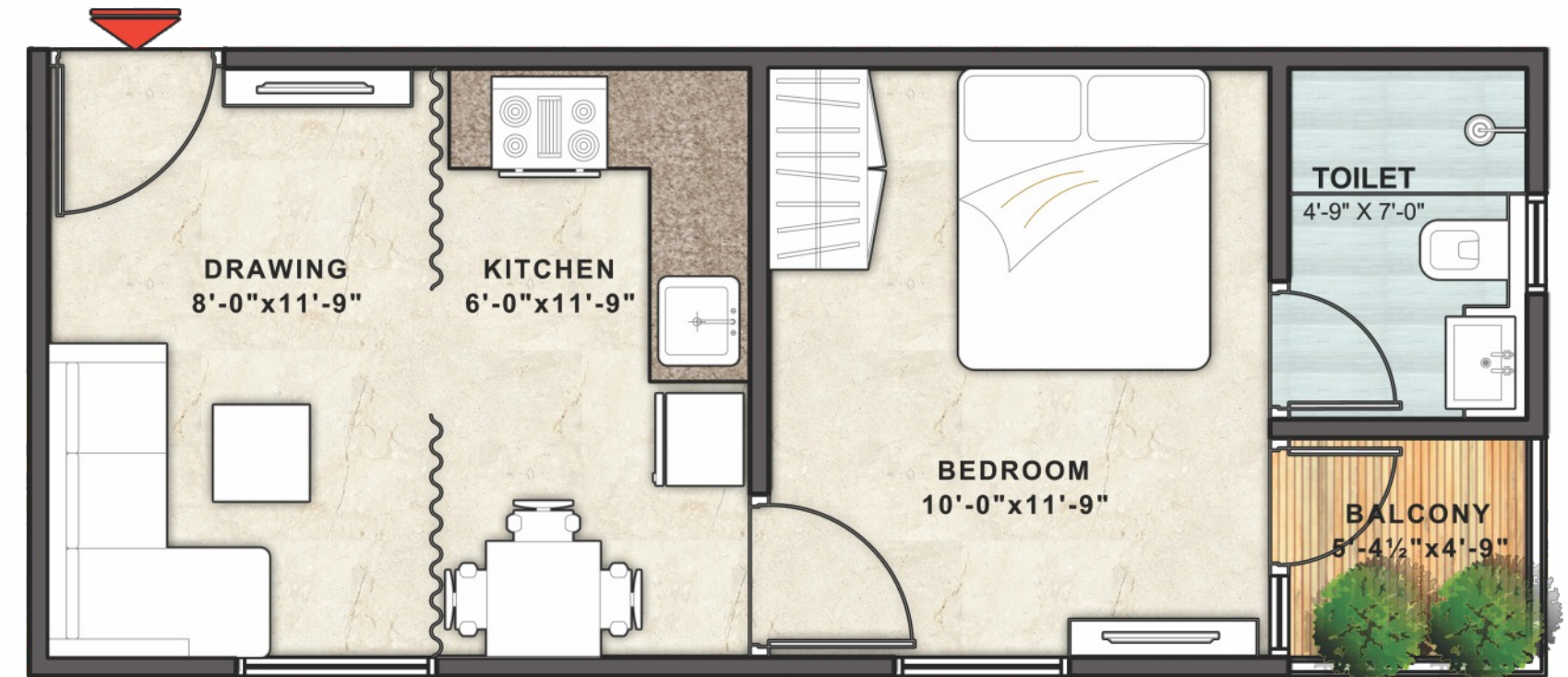
UNIT PLAN



KEY PLAN

2 BHK - TYPE A	
SALEABLE AREA	833.87 SQ.FT
CARPET AREA	524.89 SQ.FT

UNIT PLAN



KEY PLAN

1 BHK - TYPE A	
SALEABLE AREA	507.74 SQ.FT
CARPET AREA	322.28 SQ.FT



Experience Centre:
Unique Mantra
Near Gyan Vihar University
Jagatpura, Jaipur
Tel: +91 141 2507700

Corp. Office: 4th Floor,
Unique Destination,
Laxmi Mandir Crossing,
Tonk Road, Jaipur (RAJ.), India
Ph: +91 141 4090777

sales@uniquegroup.in
www.uniquegroup.in

Disclaimer: This brochure is not a legal document and just describes the developers' intended conceptual plan. Specifications and details provided are tentative and may change at the sole discretion of the developer and/or the architects.