



# Songs from the Wood

Phase I



# Concept Note

Our second project in Pune stays true to our core philosophy of integrating design with nature. The central focus in each home is the garden and almost every room has a view of or access into this green space.

A large extent of the total land area is open for beautiful landscaping. This surrounds the homes with a lush green cover and gives ample breathing space.

Songs from the Wood is located in Uday Baug (off Solapur Road) in a serene and lush green environment. The project is located close to the Pune Race Course which was built in 1830 and covers 118.5 acres.





# Master Plan



## Legend

- 01** B01 Residential (LG+3P+18FL)
- 02** B02 Residential (LG+3P+10FL)

**LG:** Lower Ground  
**P:** Parking  
**FL:** Floor

- Master Development Land
- Residential Land
- Project Land



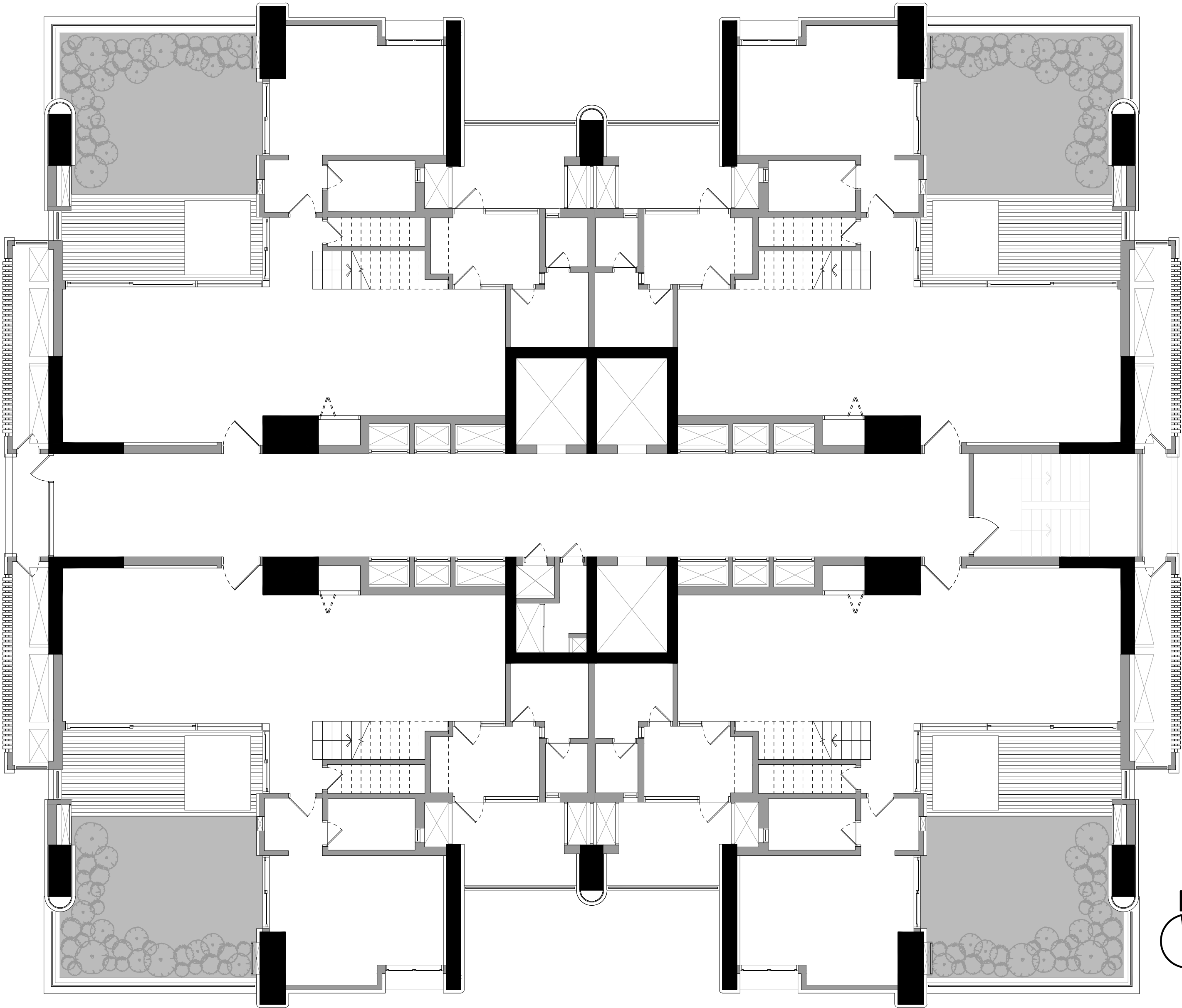
# Block Plan

**Block 1**  
(Level 4, 6, 8, 10)



Block 01
1041
1061
1081
1101

Block 01
1044
1064
1084
1104

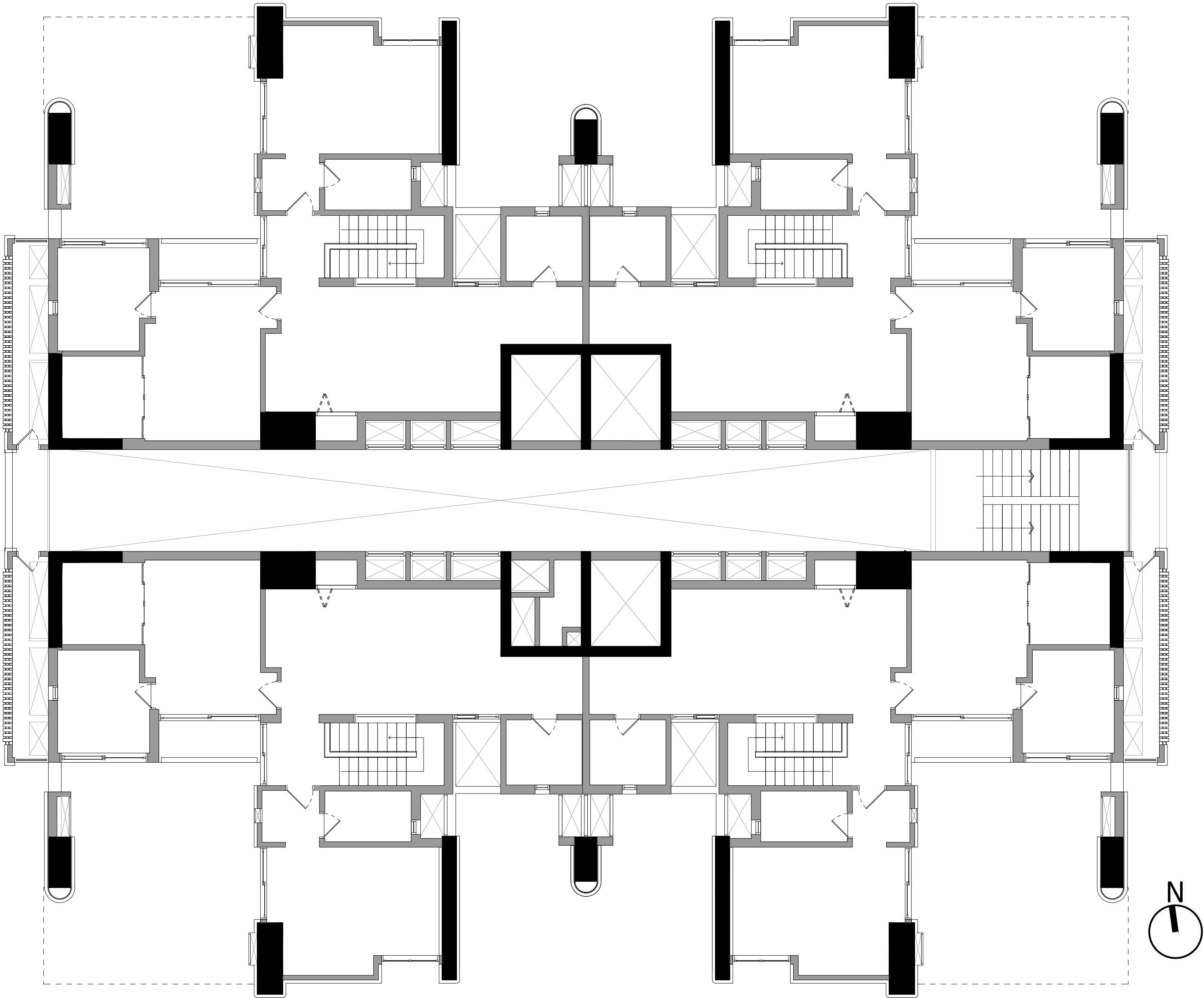


Block 01
1042
1062
1082
1102

Block 01
1043
1063
1083
1103

# Block Plan

**Block 1**  
(Level 5, 7, 9, 11)



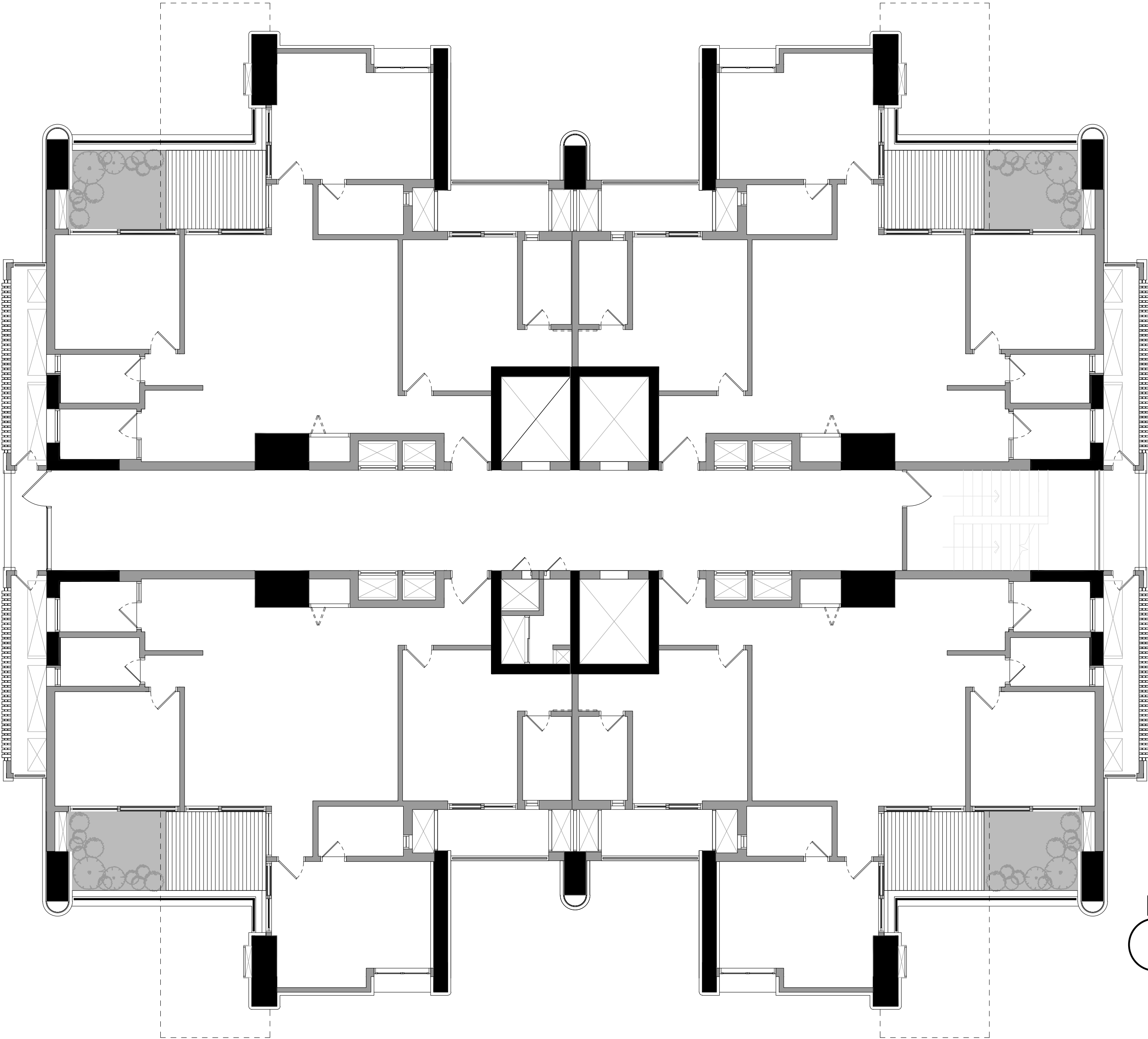
# Block Plan

**Block 1**  
(Level 12, 14, 16, 18, 20)



Block 01
1121
1141
1161
1181
1201

Block 01
1124
1144
1164
1184
1204



Block 01
1122
1142
1162
1182
1202

Block 01
1123
1143
1163
1183
1203



# Block Plan

**Block 1**  
(Level 13, 15, 17, 19, 21)

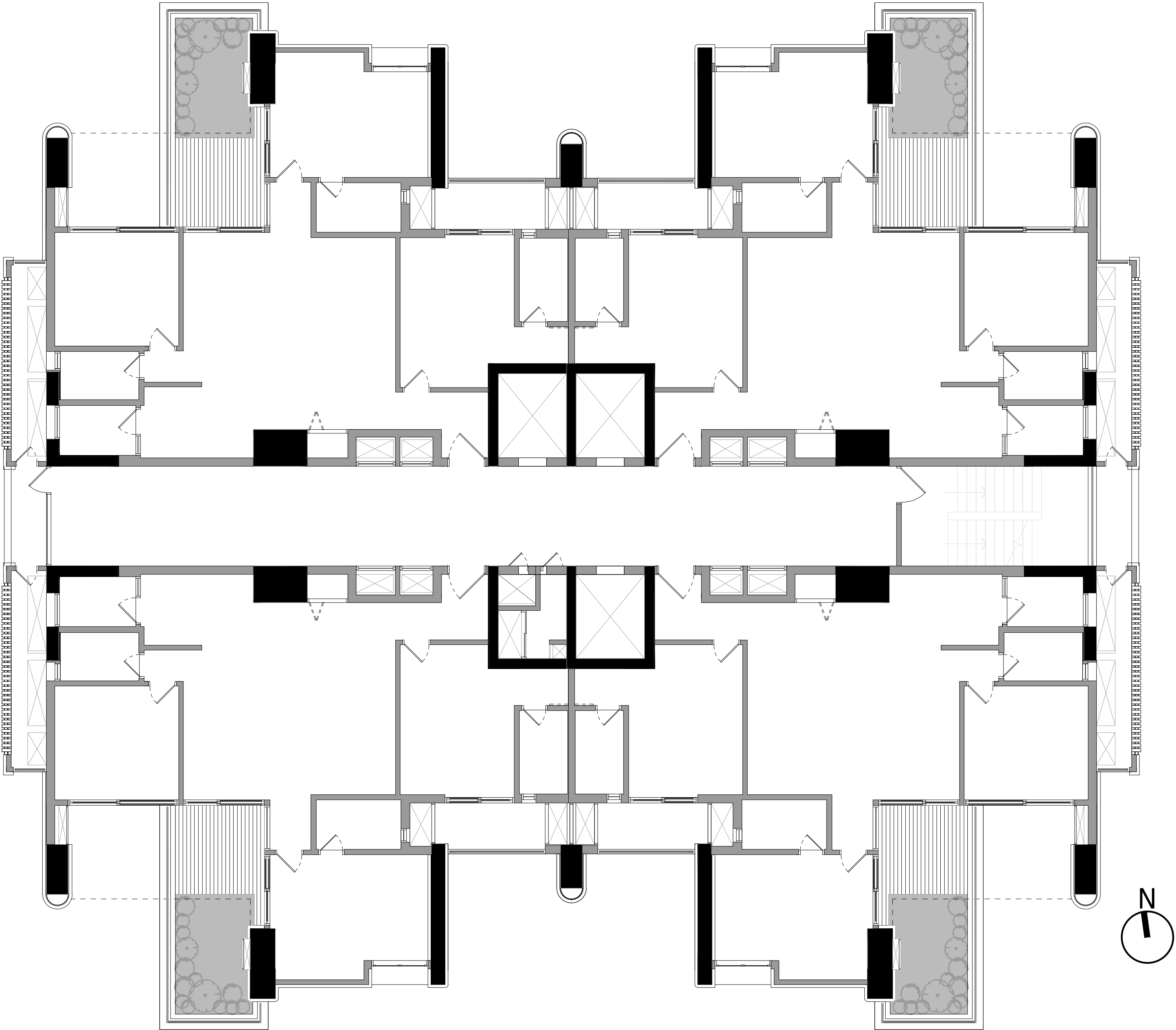


Block 01
1131
1151
1171
1191
1211

Block 01
1134
1154
1174
1194
1214

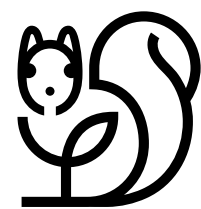
Block 01
1132
1152
1172
1192
1212

Block 01
1133
1153
1173
1193
1213



# Block Plan

**Block 2**  
(Level 4, 8, 12)

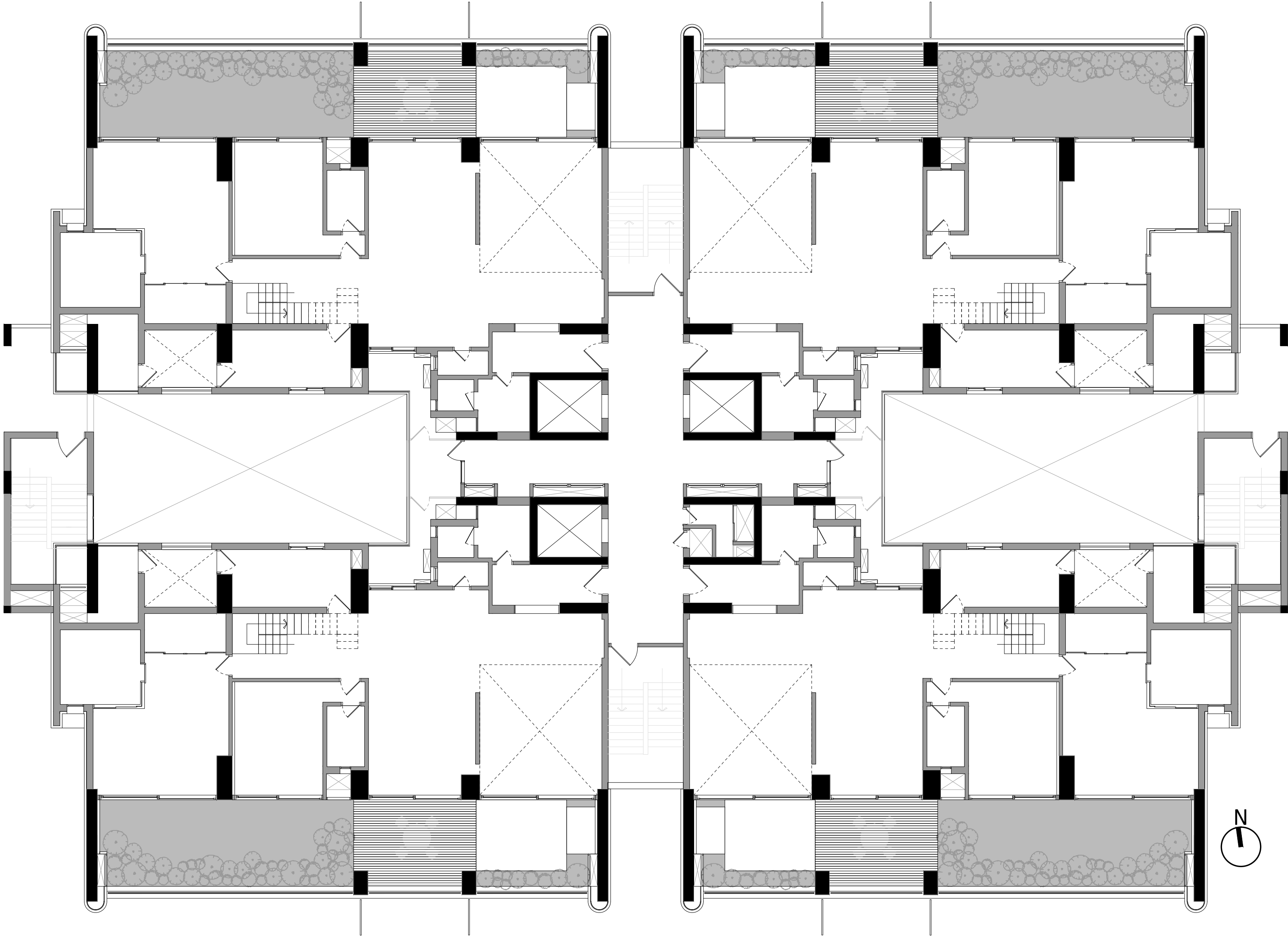


Block 02

2041  
2081  
2121

Block 02

2044  
2084  
2124



Block 02

2042  
2082  
2122

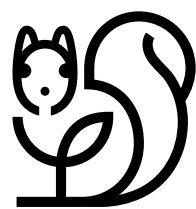
Block 02

2043  
2083  
2123



# Block Plan

**Block 2**  
(Level 6, 10)



Block 02

2061  
2101

Block 02

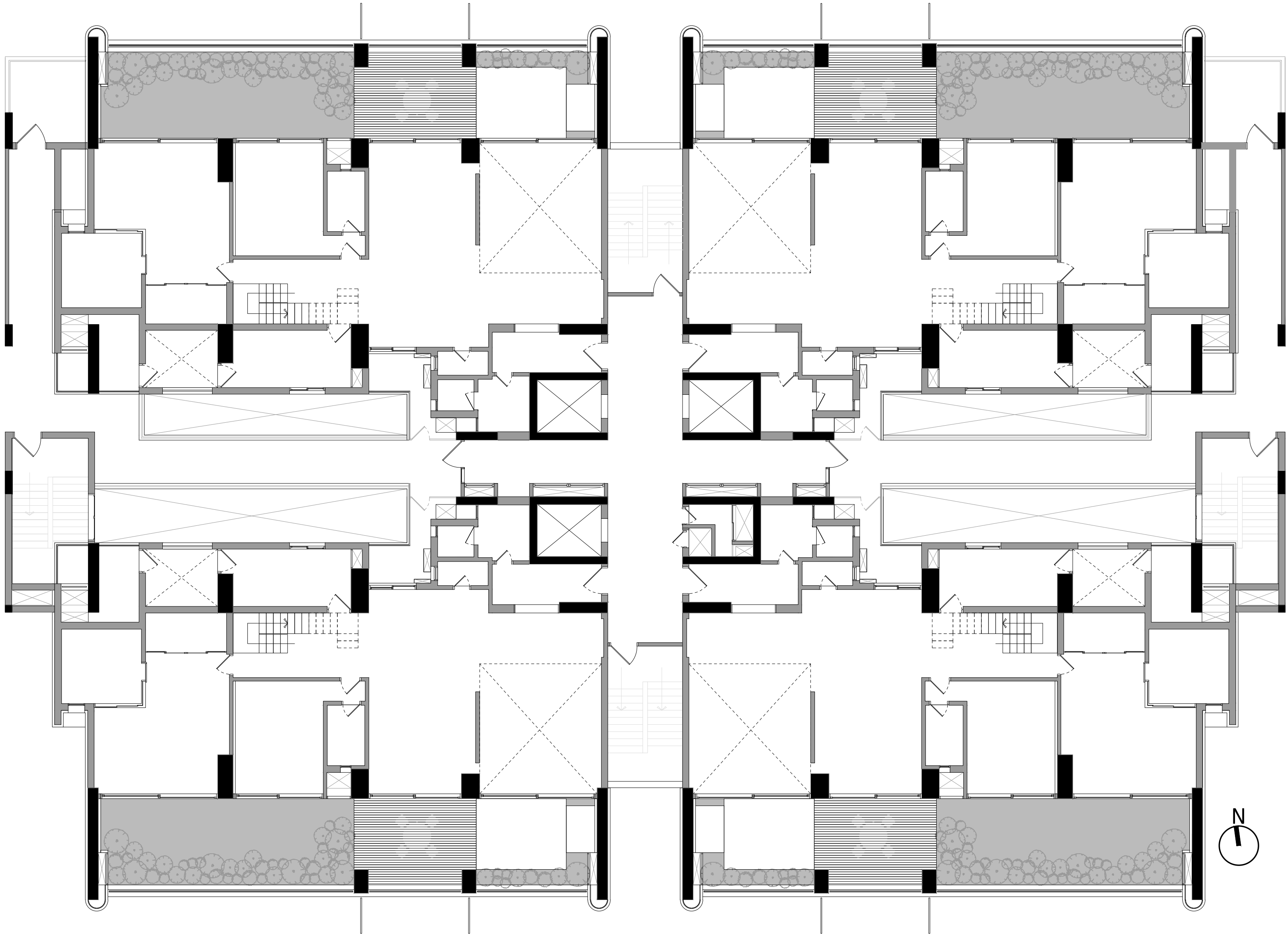
2062  
2102

Block 02

2064  
2104

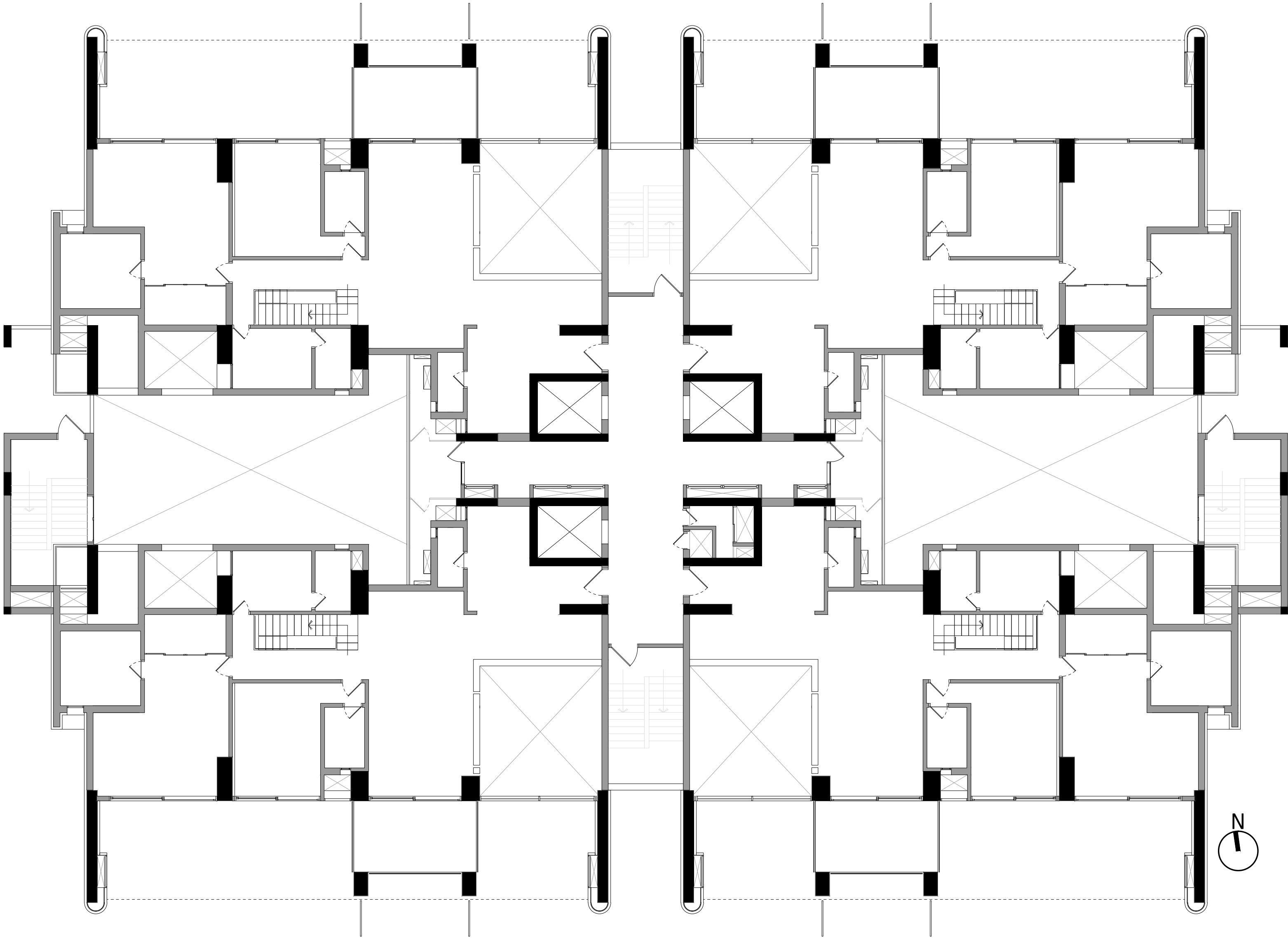
Block 02

2063  
2103



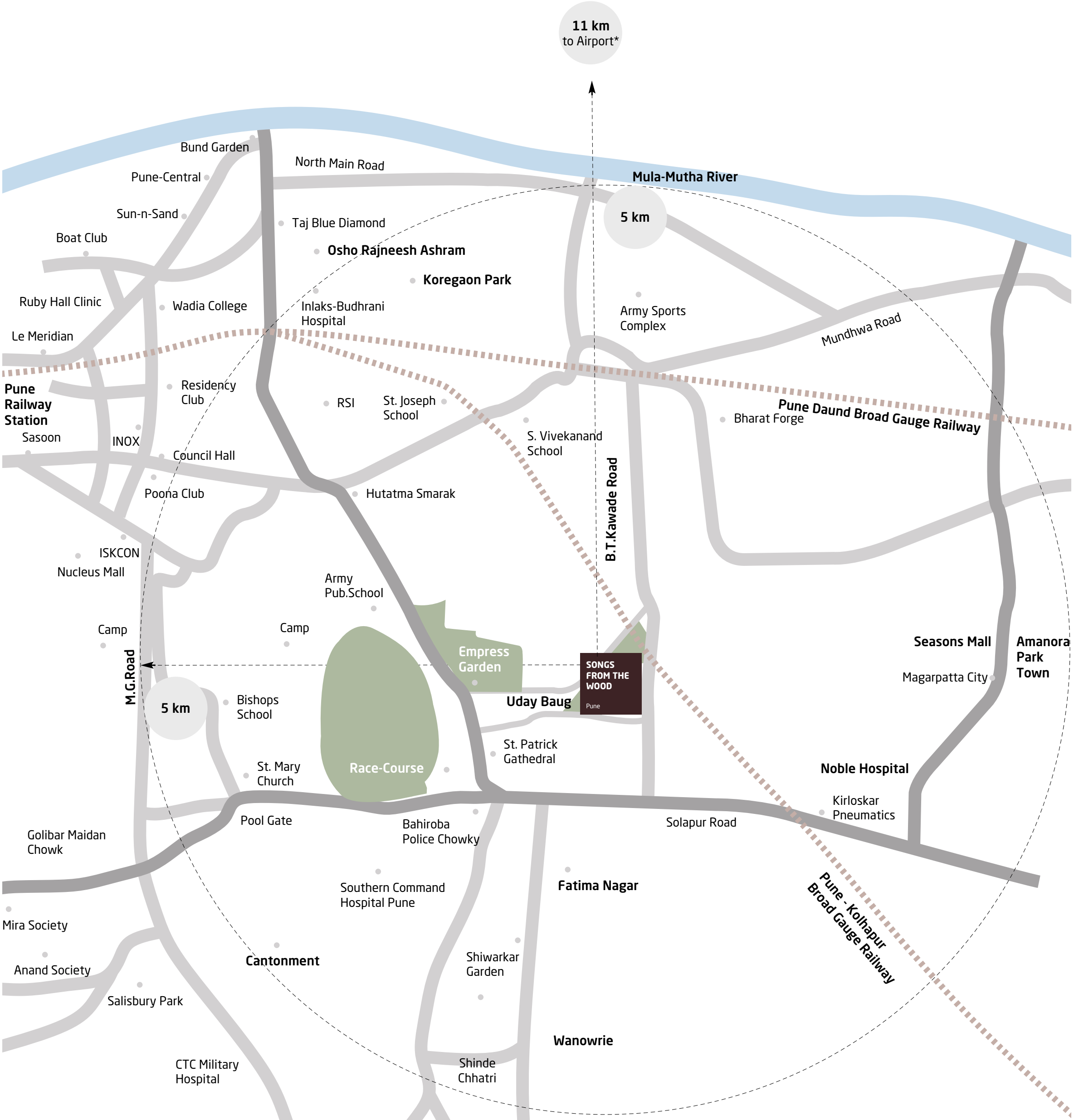
# Block Plan

**Block 2**  
(Level 5, 7, 9, 11, 13)

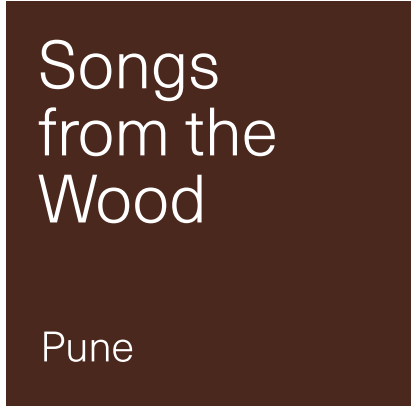




# Location Map



# Fact File



## Project

Master Development Land Area	32828.74 sqm
Residential Development Land Area	13709.8 sqm
Project Land Area	6974.5 sqm
Total Number of Units in Residential Development	188
Number of Units in Project	76
Available Products in Project	D60, D35a, L20a, L20b
Approvals Obtained	PMC, AIRPORT, FIRE, GARDEN NOC, MOEF, MPCB
RERA Registration Number	P52100004898
Completion Date for Project	July 2022

## Location

Distance from CBD [Km]	5.0 km to MG Road
Distance from Airport [Km]	11.0 km to Airport
Nearest Hospital [Km]	6.0 km to Ruby Hall Clinic
Nearest Good School [Km]	4.0 km to The Bishop’s School
Nearest Upmarket Mall [Km]	5.2 km to Seasons Mall
Nearest 5 Star Hotel [Km]	5.0 km to Vivanta by Taj





**Come, discover our homes.**

To book an exclusive tour of our prototype call **+91 99000 78000** or mail us at **discover@total-environment.com**.

**www.total-environment.com**

**Total**Environment  
Homes