



# ORCHARD COUNTRY

LIFE IN EVERY MOMENT







## IMAGINE A HOME THAT COMBINES THE FINEST AND THE FINEST!

Count the stars. Peep into the moon. Lounge by the grass. Or, talk to the trees. Orchard County is set in an open view of the skies, with greens all around to soak your stress and nurture your smiles. Wake up in the morning to a lazy sun.... take a walk in the garden and meet the flowers. Have a coffee by the window and let the fresh winds cool off your weariness after work. Let life and its daily flow change completely in a natural ambience.

141 Contemporary Apartments  
across 3 Towers : Hazel, Citrus, Olive  
on B.T. Road, Kolkata.

## AMENITIES

### WATER SUPPLY

- 24x7 water supply from deep tubewells.
- Water-filtration plant.

### SECURITY

- 24x7 security.
- CCTV and a security surveillance room.
- Intercom connectivity within the whole complex.

### POWER & FIRE SAFETY

- 24x7 power back up.
- 100% power back up for all common areas.
- 2BHK-500W, 3BHK- 750W, 4BHK-1000W.
- State-of-the-Art fire fighting equipments.

## FACILITIES

- Landscaped central garden with adequate greenery all around the complex.
- Toddlers swimming pool.
- A.C. community hall.
- A.C. gymnasium.
- Indoor games room.

**ORCHARD**  
COUNTY







# Specifications

## BUILDING

- Earthquake-resistant RCC structure.

## INTERNAL WALLS

- 3" & 5" brickwork with Plaster of Paris finish.

## EXTERIOR WALLS

- 8"-10" brickwork combined with stylish elevation cladding and finished with high quality paint.

## FLOORING

- Vitrified tiles in all floor area of the flats.
- Marble / Granite / Designer tiles in staircases, lobby and common areas.

## WINDOWS

- Anodized / powder coated aluminium sliding windows.

## TOILET

- Anti-skid ceramic / vitrified tiles on floor.
- Designer ceramic tiles upto (door height) 7 ft height on walls.
- Sanitaryware of Hindware / Parryware or equivalent.
- CP fittings of Jaquar / Ess Ess or equivalent.
- Electrical points for geyser and exhaust fan.

## DOORS

- Imported malaysian sal wood frame with flush doors.
- Main doors with night latch and handles with eyepiece.

## ELEVATORS

- Two (2) automatic elevators (Otis / Kone / Schneider) in each block.

## KITCHEN

- Granite kitchen platform with stainless steel sink.
- Anti-skid tiles on floor.
- Ceramic glazed tiles upto 2 ft height above platform.
- Electrical points for water filter, exhaust fan, microwave.

## ELECTRICALS

- Fire-resistant copper wires with MCB (Havells or equivalent) and Modular Switches (Havells / Toyama or equivalent).
- A.C. points in living / dining and all rooms for split air-conditioners only.
- Geyser points in all bathrooms.
- Cable / DTH, Telephone, Intercom connection in living / dining.
- Adequate 15 Amp and 5 Amp points.







1st Floor Plan

# HAZEL



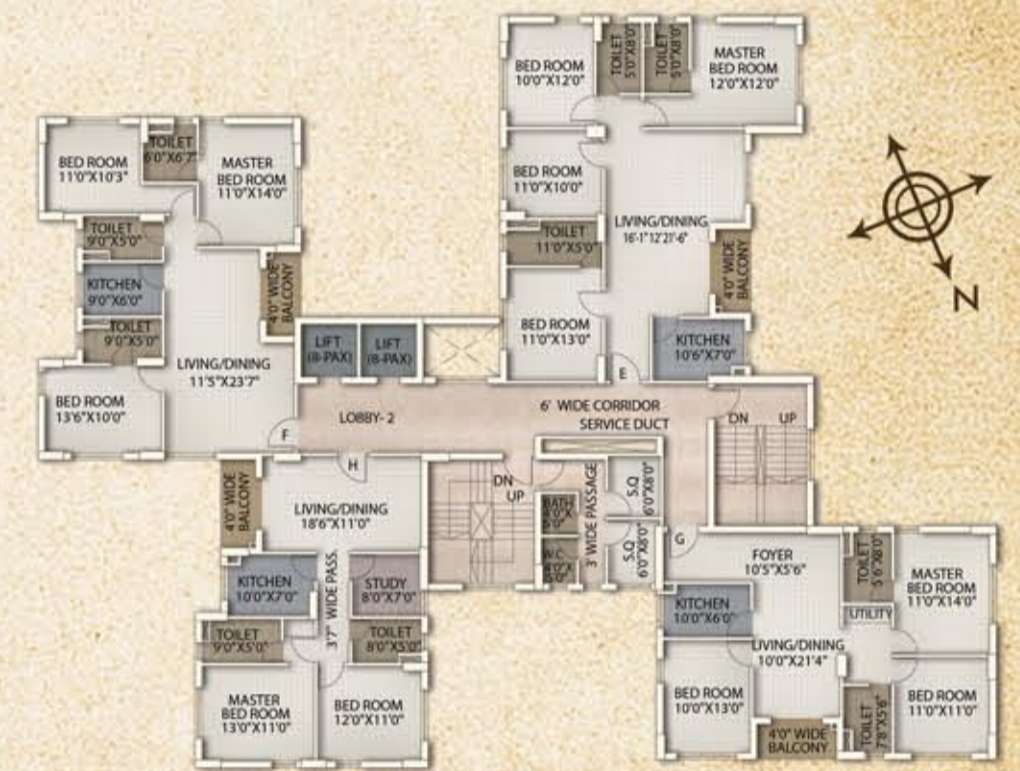
Typical 2nd to 13th Floor Plan



1st Floor Plan

# CITRUS

| Flat | BHK     | 1st Floor S.B.U | 2nd to 13th Floor S.B.U |
|------|---------|-----------------|-------------------------|
| E    | 4       | 2301 sq.ft.     | 1817 sq.ft.             |
| F    | 3       | 1900 sq.ft.     | 1571 sq.ft.             |
| G    | 3       | 1412 sq.ft.     | 1412 sq.ft.             |
| H    | 2+study | 1234 sq.ft.     | 1234 sq.ft.             |



Typical 2nd to 13th Floor Plan



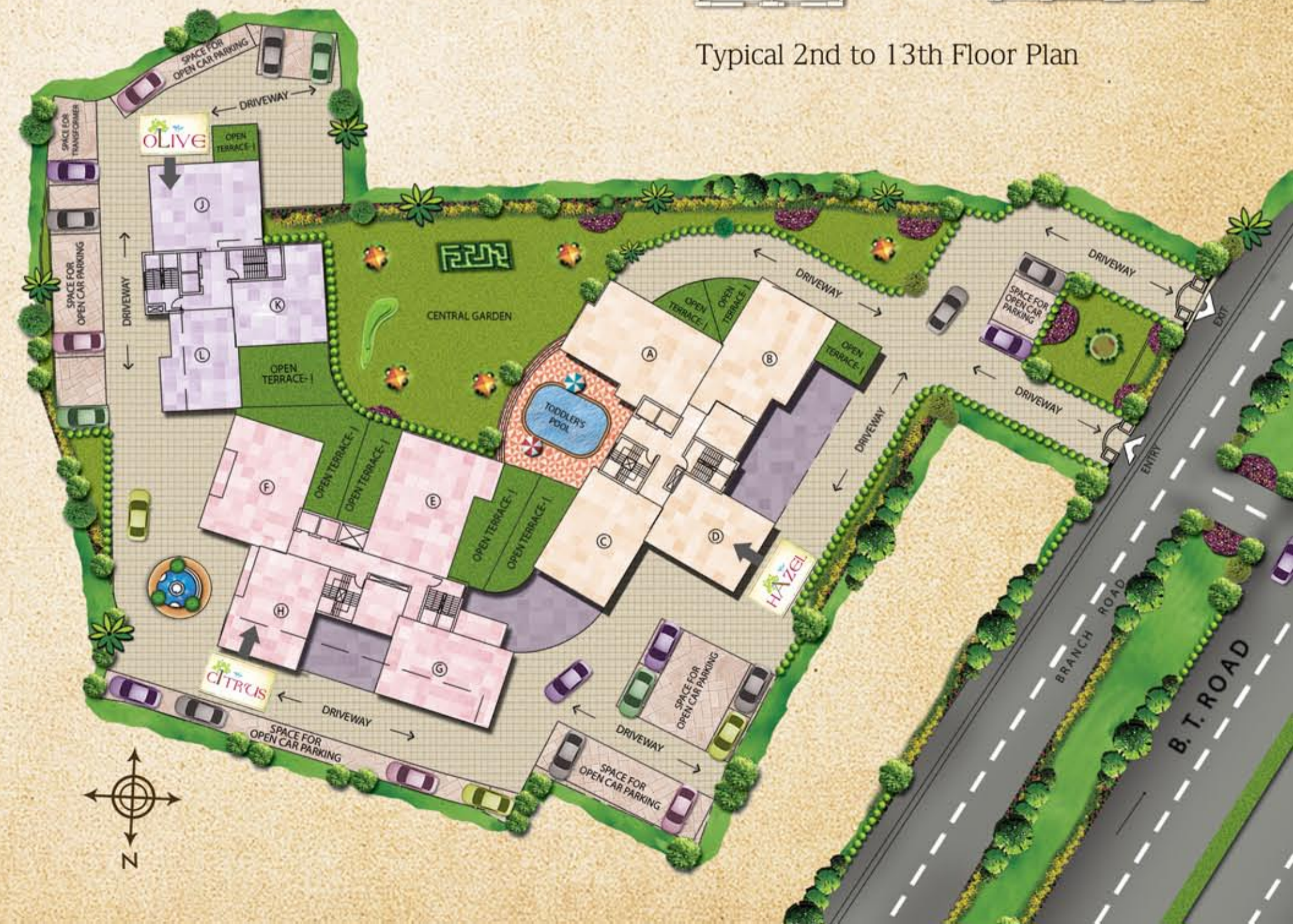
1st Floor Plan

# OLIVE

| Flat | BHK | 1st Floor S.B.U | 2nd to 13th Floor S.B.U |
|------|-----|-----------------|-------------------------|
| J    | 3   | 1511 sq.ft.     | 1421 sq.ft.             |
| K    | 2   | 1249 sq.ft.     | 1098 sq.ft.             |
| L    | 2   | 1218 sq.ft.     | 1063 sq.ft.             |



Typical 2nd to 13th Floor Plan

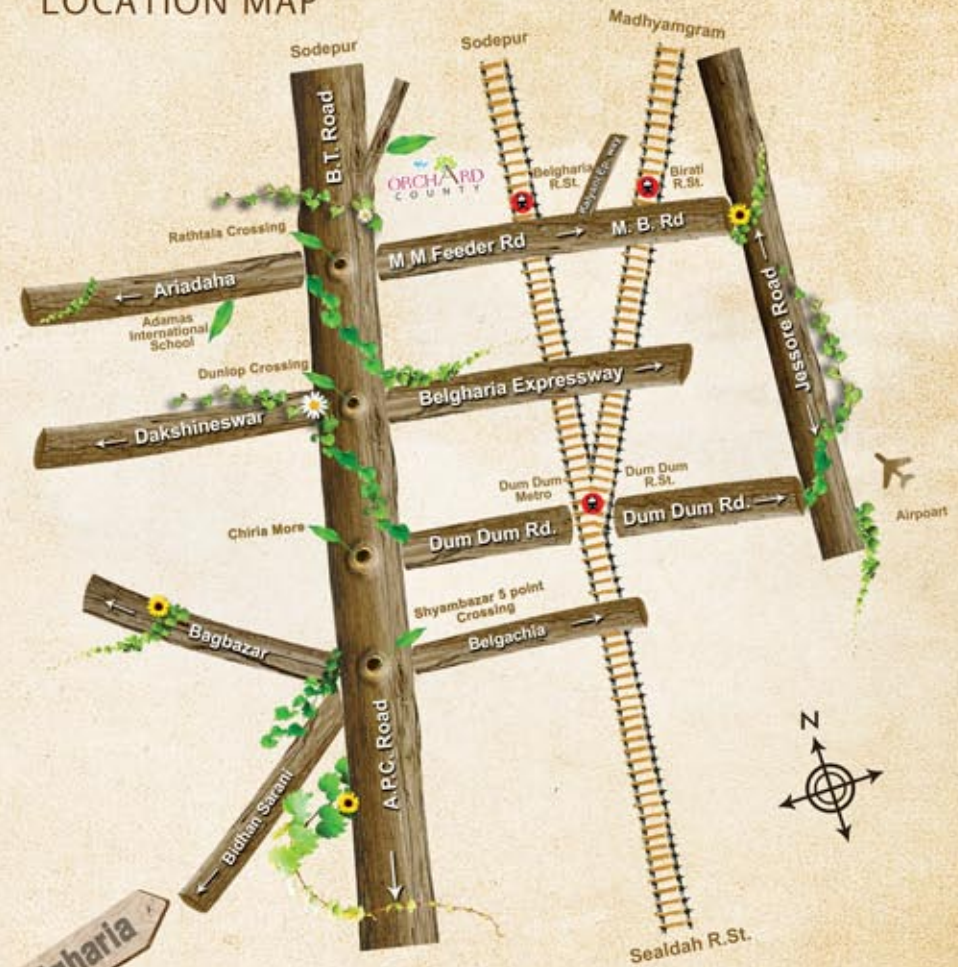


## Floor Plans & Site Plan





## LOCATION MAP



MARKETED BY



Rawdon Enclave 1st Floor 10A Rawdon Street Kolkata 700017  
E sales@pioneerproperty.in W www.pioneerproperty.in

**+91 33 4002 4002**

DEVELOPED BY



## PROXIMITY

- Dunlop Crossing 1.9 km
- Rathtala Crossing 0.7 km
- Belgharia Railway Station 2.2 km
- Agarpara Railway Station 2.0 km
- Dum Dum Metro/ Railway Station 7.1 km
- Shyambazar 5 pt. Crossing & Metro 7.7 km