

### 2 BHK TYPICAL EVEN FLOOR PLAN

FLAT NO.	FLAT CARPET AREA		ENCLOSED BALCONY		TERRACE	
	(Sq m)	(sq ft)	(Sq m)	(sq ft)	(Sq m)	(sq ft)
203, 403, 603, 803, 1003, 1203, 1403, 1603	64.56	694.92	13.51	145.42	11.33	121.95



**Note:**

The floor plan shown here are of a possible furniture arrangement and utilization of various spaces on the basis of sanctioned plans for ease of understanding and it must be read in conjunction with sanctioned plans. Nomenclature of various rooms and spaces in these layouts/plans is just a suggestion and may not be the same as in the sanctioned plans.

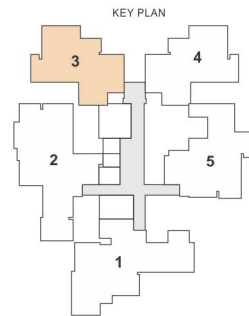
Purchase decision should be made on the basis of sanctioned plans and proposed sanctioned plans only. A copy of detailed sanction plans and layout can be viewed in our corporate office or Maha RERA website. Dimensions and area are shown in feet, inches and sq ft for customer's convenience only.

Metric system dimensions and column positions can be seen on engineering working drawings. 1 foot = 0.3048 meter ; 1 square meter = 10.7639 square feet.

These drawings may not be to scale. Minor area variation possible due to elevational features. Appliances, electronics, furniture, fixtures etc. are not included with the flat and are only for illustration purpose. Plans shown here are with enclosed balcony as permitted in sanctioned municipal drawings.

Carpet area is calculated as per Maha RERA. Enclosed balcony, open balcony, attached terrace and sit-out area is not considered in carpet area.

All room dimensions shown are before plastering i.e. unfinished wall to unfinished wall. Dado tiling with plaster on bathroom walls is considered as 25mm thickness.



### 2 BHK TYPICAL ODD FLOOR PLAN

FLAT NO.	FLAT CARPET AREA		ENCLOSED BALCONY		TERRACE	
	(Sq m)	(sq ft)	(Sq m)	(sq ft)	(Sq m)	(sq ft)
503, 703, 903, 1103, 1303, 1503, 1703	64.64	695.78	13.42	144.45	11.17	120.23



**Note:**

The floor plan shown here are of a possible furniture arrangement and utilization of various spaces on the basis of sanctioned plans for ease of understanding and it must be read in conjunction with sanctioned plans. Nomenclature of various rooms and spaces in these layouts/plans is just a suggestion and may not be the same as in the sanctioned plans.

Purchase decision should be made on the basis of sanctioned plans and proposed sanctioned plans only. A copy of detailed sanction plans and layout can be viewed in our corporate office or Maha RERA website. Dimensions and area are shown in feet, inches and sq ft for customer's convenience only.

Metric system dimensions and column positions can be seen on engineering working drawings. 1 foot = 0.3048 meter ; 1 square meter = 10.7639 square feet.

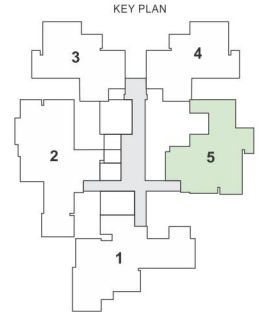
These drawings may not be to scale. Minor area variation possible due to elevational features. Appliances, electronics, furniture, fixtures etc. are not included with the flat and are only for illustration purpose. Plans shown here are with enclosed balcony as permitted in sanctioned municipal drawings.

Carpet area is calculated as per Maha RERA. Enclosed balcony, open balcony, attached terrace and sit-out area is not considered in carpet area.

All room dimensions shown are before plastering i.e. unfinished wall to unfinished wall. Dado tiling with plaster on bathroom walls is considered as 25mm thickness.



**105,305,505,705,905**  
**1105,1305,1505,1705**



### 2.5 BHK ODD FLOOR PLAN

FLAT NO.	FLAT CARPET AREA		ENCLOSED BALCONY		TERRACE	
	(Sq m)	(sq ft)	(Sq m)	(sq ft)	(Sq m)	(sq ft)
305, 505, 705, 905, 1105, 1305, 1505, 1705	80.78	869.51	6.80	73.19	14.17	152.52



**Note:**

The floor plan shown here are of a possible furniture arrangement and utilization of various spaces on the basis of sanctioned plans for ease of understanding and it must be read in conjunction with sanctioned plans. Nomenclature of various rooms and spaces in these layouts/plans is just a suggestion and may not be the same as in the sanctioned plans.

Purchase decision should be made on the basis of sanctioned plans and proposed sanctioned plans only. A copy of detailed sanction plans and layout can be viewed in our corporate office or Maha RERA website. Dimensions and area are shown in feet, inches and sq ft for customer's convenience only.

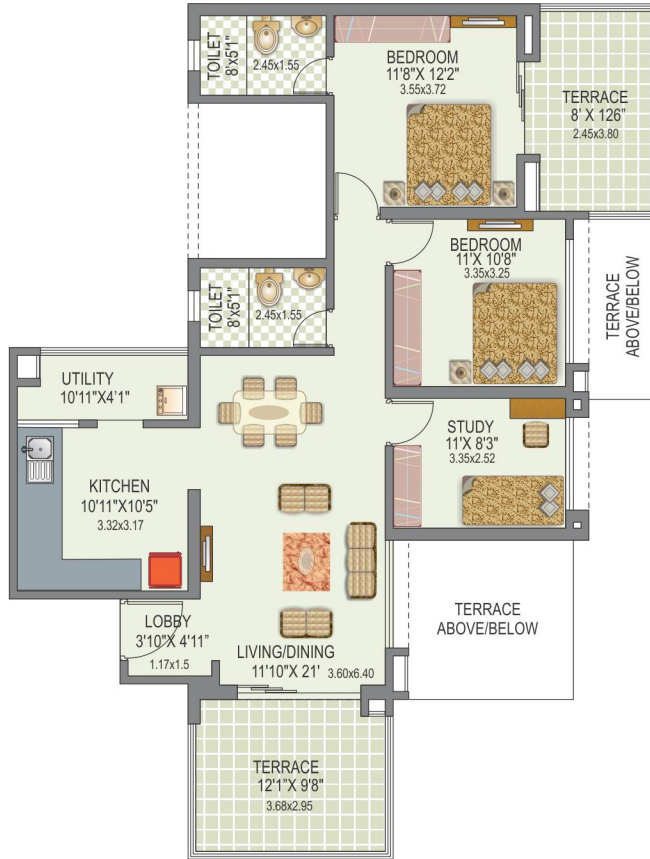
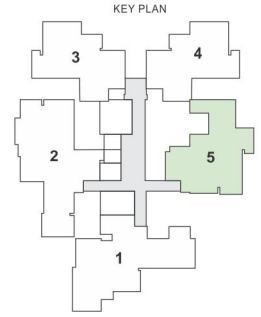
Metric system dimensions and column positions can be seen on engineering working drawings. 1 foot = 0.3048 meter ; 1 square meter = 10.7639 square feet.

These drawings may not be to scale. Minor area variation possible due to elevational features. Appliances, electronics, furniture, fixtures etc. are not included with the flat and are only for illustration purpose. Plans shown here are with enclosed balcony as permitted in sanctioned municipal drawings.

Carpet area is calculated as per Maha RERA. Enclosed balcony, open balcony, attached terrace and sit-out area is not considered in carpet area.

All room dimensions shown are before plastering i.e. unfinished wall to unfinished wall. Dado tiling with plaster on bathroom walls is considered as 25mm thickness.

205,405,605,805,  
1005,1205,1405,1605



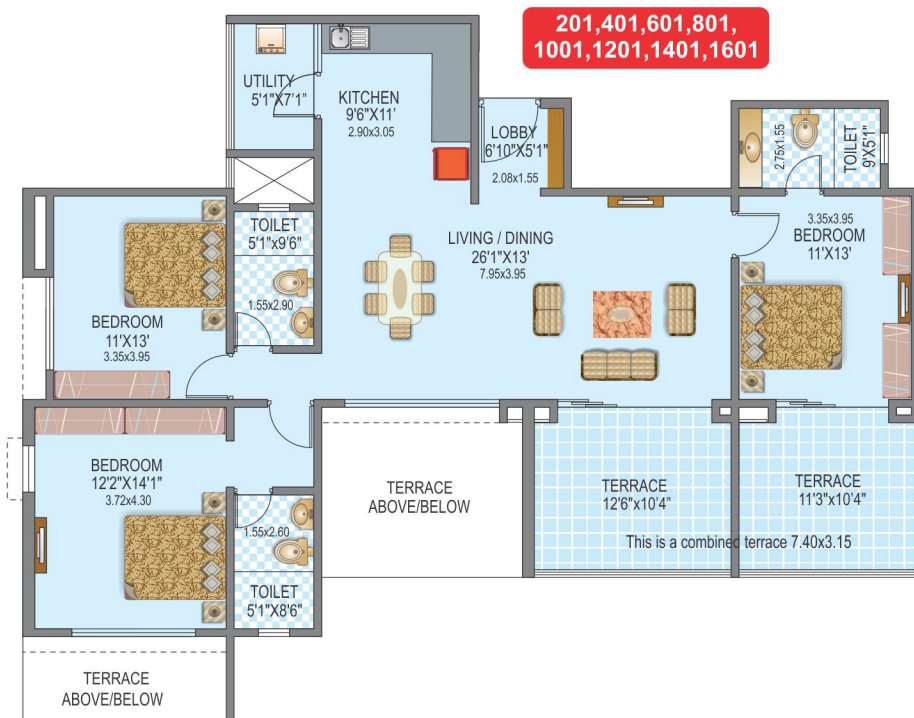
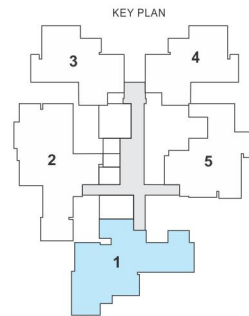
### 2.5 BHK EVEN FLOOR PLAN

FLAT NO.	FLAT CARPET AREA		ENCLOSED BALCONY		TERRACE	
	(Sq m)	(sq ft)	(Sq m)	(sq ft)	(Sq m)	(sq ft)
205, 405, 605, 805, 1005, 1205, 1405, 1605	81.00	871.88	6.73	72.44	18.88	203.22



**Note:**

The floor plan shown here are of a possible furniture arrangement and utilization of various spaces on the basis of sanctioned plans for ease of understanding and it must be read in conjunction with sanctioned plans. Nomenclature of various rooms and spaces in these layouts/plans is just a suggestion and may not be the same as in the sanctioned plans. Purchase decision should be made on the basis of sanctioned plans and proposed sanctioned plans only. A copy of detailed sanction plans and layout can be viewed in our corporate office or Maha RERA website. Dimensions and area are shown in feet, inches and sq ft for customer's convenience only. Metric system dimensions and column positions can be seen on engineering working drawings. 1 foot = 0.3048 meter ; 1 square meter = 10.7639 square feet. These drawings may not be to scale. Minor area variation possible due to elevational features. Appliances, electronics, furniture, fixtures etc. are not included with the flat and are only for illustration purpose. Plans shown here are with enclosed balcony as permitted in sanctioned municipal drawings. Carpet area is calculated as per Maha RERA. Enclosed balcony, open balcony, attached terrace and sit-out area is not considered in carpet area. All room dimensions shown are before plastering i.e. unfinished wall to unfinished wall. Dado tiling with plaster on bathroom walls is considered as 25mm thickness.



### 3 BHK TYPE - 1 EVEN FLOOR PLAN

FLAT NO.	FLAT CARPET AREA		ENCLOSED BALCONY		TERRACE	
	(Sq m)	(sq ft)	(Sq m)	(sq ft)	(Sq m)	(sq ft)
201, 401, 601, 801, 1001, 1201, 1401, 1601	94.30	1015.04	17.55	188.90	22.57	242.94



**Note:**

The floor plan shown here are of a possible furniture arrangement and utilization of various spaces on the basis of sanctioned plans for ease of understanding and it must be read in conjunction with sanctioned plans. Nomenclature of various rooms and spaces in these layouts/plans is just a suggestion and may not be the same as in the sanctioned plans.

Purchase decision should be made on the basis of sanctioned plans and proposed sanctioned plans only. A copy of detailed sanction plans and layout can be viewed in our corporate office or Maha RERA website. Dimensions and area are shown in feet, inches and sq ft for customer's convenience only.

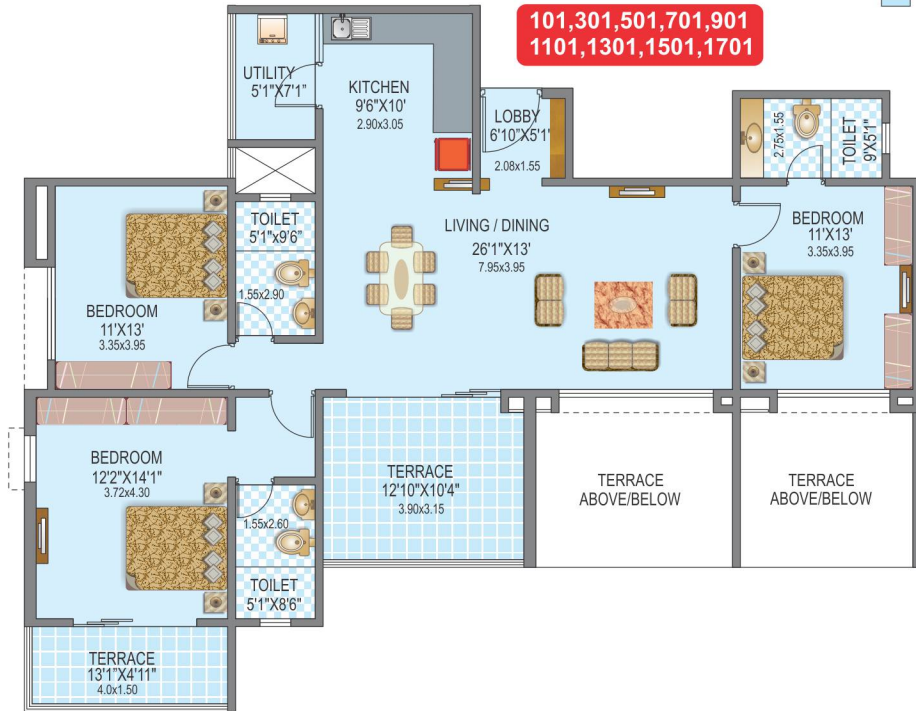
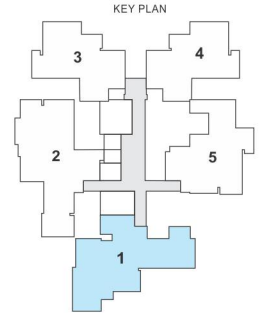
Metric system dimensions and column positions can be seen on engineering working drawings. 1 foot = 0.3048 meter ; 1 square meter = 10.7639 square feet.

These drawings may not be to scale. Minor area variation possible due to elevational features. Appliances, electronics, furniture, fixtures etc. are not included with the flat and are only for illustration purpose. Plans shown here are with enclosed balcony as permitted in sanctioned municipal drawings.

Carpet area is calculated as per Maha RERA. Enclosed balcony, open balcony, attached terrace and sit-out area is not considered in carpet area.

All room dimensions shown are before plastering i.e. unfinished wall to unfinished wall. Dado tiling with plaster on bathroom walls is considered as 25mm thickness.





**3 BHK TYPE - 1  
ODD FLOOR PLAN**

FLAT NO.	FLAT CARPET AREA		ENCLOSED BALCONY		TERRACE	
	(Sq m)	(sq ft)	(Sq m)	(sq ft)	(Sq m)	(sq ft)
101, 1101, 1301, 1501, 1701	95.12	1023.87	16.78	180.62	17.77	191.27



**Note:**

The floor plan shown here are of a possible furniture arrangement and utilization of various spaces on the basis of sanctioned plans for ease of understanding and it must be read in conjunction with sanctioned plans. Nomenclature of various rooms and spaces in these layouts/plans is just a suggestion and may not be the same as in the sanctioned plans.

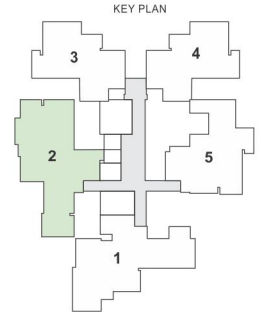
Purchase decision should be made on the basis of sanctioned plans and proposed sanctioned plans only. A copy of detailed sanction plans and layout can be viewed in our corporate office or Maha RERA website. Dimensions and area are shown in feet, inches and sq ft for customer's convenience only.

Metric system dimensions and column positions can be seen on engineering working drawings. 1 foot = 0.3048 meter ; 1 square meter = 10.7639 square feet.

These drawings may not be to scale. Minor area variation possible due to elevational features. Appliances, electronics, furniture, fixtures etc. are not included with the flat and are only for illustration purpose. Plans shown here are with enclosed balcony as permitted in sanctioned municipal drawings.

Carpet area is calculated as per Maha RERA. Enclosed balcony, open balcony, attached terrace and sit-out area is not considered in carpet area.

All room dimensions shown are before plastering i.e. unfinished wall to unfinished wall. Dado tiling with plaster on bathroom walls is considered as 25mm thickness.



**3 BHK TYPE - 2  
TYPICAL EVEN FLOOR PLAN**

FLAT CARPET AREA		ENCLOSED BALCONY		TERRACE	
(Sq m)	(sq ft)	(Sq m)	(sq ft)	(Sq m)	(sq ft)
103.72	1116.44	8.06	86.75	13.53	145.63



**Note:**

The floor plan shown here are of a possible furniture arrangement and utilization of various spaces on the basis of sanctioned plans for ease of understanding and it must be read in conjunction with sanctioned plans. Nomenclature of various rooms and spaces in these layouts/plans is just a suggestion and may not be the same as in the sanctioned plans.

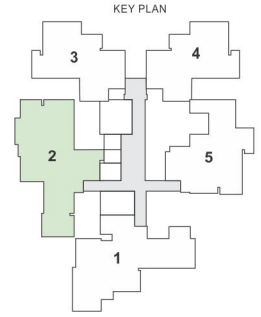
Purchase decision should be made on the basis of sanctioned plans and proposed sanctioned plans only. A copy of detailed sanction plans and layout can be viewed in our corporate office or Maha RERA website. Dimensions and area are shown in feet, inches and sq ft for customer's convenience only.

Metric system dimensions and column positions can be seen on engineering working drawings. 1 foot = 0.3048 meter ; 1 square meter = 10.7639 square feet.

These drawings may not be to scale. Minor area variation possible due to elevational features. Appliances, electronics, furniture, fixtures etc. are not included with the flat and are only for illustration purpose. Plans shown here are with enclosed balcony as permitted in sanctioned municipal drawings.

Carpet area is calculated as per Maha RERA. Enclosed balcony, open balcony, attached terrace and sit-out area is not considered in carpet area.

All room dimensions shown are before plastering i.e. unfinished wall to unfinished wall. Dado tiling with plaster on bathroom walls is considered as 25mm thickness.



**3 BHK TYPE - 2  
TYPICAL ODD FLOOR PLAN**

FLAT CARPET AREA		ENCLOSED BALCONY		TERRACE	
(Sq m)	(sq ft)	(Sq m)	(sq ft)	(Sq m)	(sq ft)
104.01	1119.56	8.06	86.75	23.40	251.87



**Note:**

The floor plan shown here are of a possible furniture arrangement and utilization of various spaces on the basis of sanctioned plans for ease of understanding and it must be read in conjunction with sanctioned plans. Nomenclature of various rooms and spaces in these layouts/plans is just a suggestion and may not be the same as in the sanctioned plans.

Purchase decision should be made on the basis of sanctioned plans and proposed sanctioned plans only. A copy of detailed sanction plans and layout can be viewed in our corporate office or Maha RERA website. Dimensions and area are shown in feet, inches and sq ft for customer's convenience only.

Metric system dimensions and column positions can be seen on engineering working drawings. 1 foot = 0.3048 meter ; 1 square meter = 10.7639 square feet.

These drawings may not be to scale. Minor area variation possible due to elevational features. Appliances, electronics, furniture, fixtures etc. are not included with the flat and are only for illustration purpose. Plans shown here are with enclosed balcony as permitted in sanctioned municipal drawings.

Carpet area is calculated as per Maha RERA. Enclosed balcony, open balcony, attached terrace and sit-out area is not considered in carpet area.

All room dimensions shown are before plastering i.e. unfinished wall to unfinished wall. Dado tiling with plaster on bathroom walls is considered as 25mm thickness.











LAYOUT PLAN



# LOCATION MAP









