









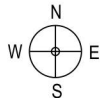
## A2 - BUILDING

8th Floor Plan

FLAT NO.	FLAT CARPET AREA		ENCLOSED BALCONY		DRY BALCONY		TERRACE	
	(Sq m)	(sq ft)	(Sq m)	(sq ft)	(Sq m)	(sq ft)	(Sq m)	(sq ft)
801	REFUGE AREA							
802	43.86	472.10	9.78	105.27	2.17	23.35	4.76	51.23
803	45.45	489.22	8.19	88.15	2.17	23.35	4.76	51.23
804	38.74	416.99	2.08	22.38	0	0.00	5.22	56.18
805	45.45	489.22	8.19	88.15	2.17	23.35	4.76	51.23
806	43.86	472.10	9.78	105.27	2.17	23.35	4.76	51.23

**Note:**

The floor plan shown here are a possible furniture arrangement and utilization of various spaces on the basis of sanctioned plan for ease of understanding and it must be read in conjunction with sanctioned plans. Nomenclature of various rooms and spaces in these layouts/plans is just a suggestion and may not be the same as in the sanctioned plans. Purchase decision should be made on the basis of sanctioned plans and proposed sanctioned plans only. A copy of detailed sanction plans and layout can be viewed in our corporate office or Maha RERA website. Dimensions and area shown in feet, inches and sq ft for customer's convenience only. 1 foot = 0.3048 meter | 1 square meter = 10.7639 square feet. Metric system dimensions can be seen on engineering drawings and sanctioned plans. This drawing is not to scale. Minor area variation possible due to elevation. Appliances, electronics, furniture, fixtures etc are not included with the flat. Plumbing layout may be subject to change. Column positions are subject to change. Plans shown here are with enclosed balcony as permitted in sanctioned municipal drawings. All room dimensions shown are before plastering i.e. unfinished wall to unfinished wall. Dado tiling with plaster on bathroom walls is considered as 25mm thickness.





**A2 - BUILDING**  
1st, 3rd & 5th Floor Plan

FLAT NO.	FLAT CARPET AREA		ENCLOSED BALCONY		DRY BALCONY		TERRACE	
	(Sq.m)	(sq.ft)	(Sq.m)	(sq.ft)	(Sq.m)	(sq.ft)	(Sq.m)	(sq.ft)
101, 301, 501	35.03	377.06	5.59	60.17	0	0.00	5.22	56.18
102, 302, 502	46.32	498.58	7.52	80.94	2.17	23.35	4.76	51.23
103, 303, 503	48.26	519.47	5.59	60.17	2.17	23.35	4.76	51.23
104, 304, 504	33.13	356.61	7.39	79.54	0	0.00	5.22	56.18
105, 305, 505	48.26	519.47	5.59	60.17	2.17	23.35	4.76	51.23
106, 306, 506	46.32	498.58	7.52	80.94	2.17	23.35	4.76	51.23

**Note::**

The floor plan shown here are a possible furniture arrangement and utilization of various spaces on the basis of sanctioned plan for ease of understanding and it must be read in conjunction with sanctioned plans. Nomenclature of various rooms and spaces in these layouts/plans is just a suggestion and may not be the same as in the sanctioned plans. Purchase decision should be made on the basis of sanctioned plans and proposed sanctioned plans only. A copy of detailed sanction plans and layout can be viewed in our corporate office or Maha RERA website. Dimensions and area shown in feet, inches and sq ft for customer's convenience only. 1 foot = 0.3048 meter | 1 square meter = 10.7639 square feet. Metric system dimensions can be seen on engineering drawings and sanctioned plans. This drawing is not to scale. Minor area variation possible due to elevation. Appliances, electronics, furniture, fixtures etc are not included with the flat. Plumbing layout may be subject to change. Column positions are subject to change. Plans shown here are with enclosed balcony as permitted in sanctioned municipal drawings. All room dimensions shown are before plastering i.e. unfinished wall to unfinished wall. Dado tiling with plaster on bathroom walls is considered as 25mm thickness.







**A2 - BUILDING**  
2nd, 4th & 6th Floor Plan

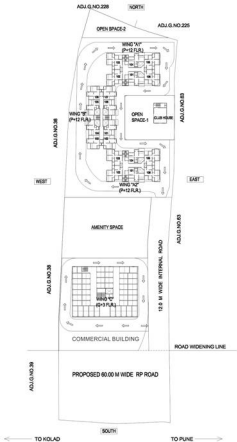
FLAT NO.	FLAT CARPET AREA		ENCLOSED BALCONY		DRY BALCONY		TERRACE	
	(Sq m)	(sq ft)	(Sq m)	(sq ft)	(Sq m)	(sq ft)	(Sq m)	(sq ft)
201,401,601	35.03	377.06	5.59	60.17	0	0.00	5.22	56.18
202,402,602	46.32	498.58	7.52	80.94	2.17	23.35	4.76	51.23
203,403,603	48.26	519.47	5.59	60.17	2.17	23.35	4.76	51.23
204,404,604	33.13	356.61	7.39	79.54	0	0.00	5.22	56.18
205,405,605	48.26	519.47	5.59	60.17	2.17	23.35	4.76	51.23
206,406,606	46.32	498.58	7.52	80.94	2.17	23.35	4.76	51.23

**Note::**

The floor plan shown here are a possible furniture arrangement and utilization of various spaces on the basis of sanctioned plan for ease of understanding and it must be read in conjunction with sanctioned plans. Nomenclature of various rooms and spaces in these layouts/plans is just a suggestion and may not be the same as in the sanctioned plans. Purchase decision should be made on the basis of sanctioned plans and proposed sanctioned plans only. A copy of detailed sanction plans and layout can be viewed in our corporate office or Maha RERA website. Dimensions and area shown in feet, inches and sq ft for customer's convenience only. 1 foot = 0.3048 meter | 1 square meter = 10.7639 square feet. Metric system dimensions can be seen on engineering drawings and sanctioned plans. This drawing is not to scale. Minor area variation possible due to elevation. Appliances, electronics, furniture, fixtures etc are not included with the flat. Plumbing layout may be subject to change. Column positions are subject to change. Plans shown here are with enclosed balcony as permitted in sanctioned municipal drawings. All room dimensions shown are before plastering i.e. unfinished wall to unfinished wall. Dado tiling with plaster on bathroom walls is considered as 25mm thickness.







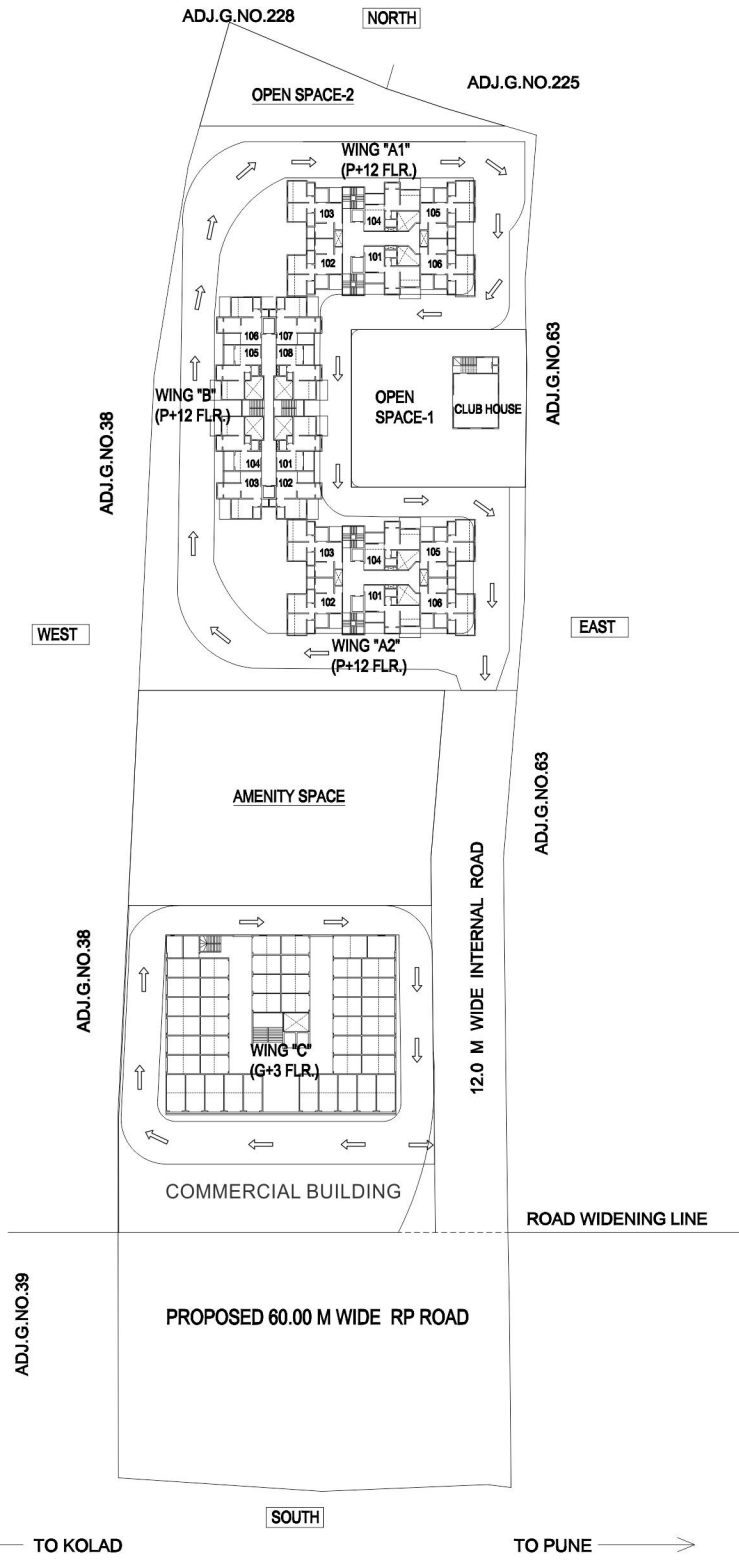
### LAYOUT PLAN

GAT NO.56 TO 62, OLD S.NO.8(P), PIRANGUT,MULSHI, PUNE.





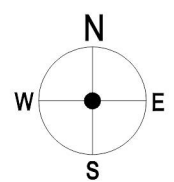
Mont Vert Enterprise



← TO KOLAD SOUTH TO PUNE →

### LAYOUT PLAN

GAT NO.56 TO 62, OLD S.NO.8(P), PIRANGUT,MULSHI, PUNE.







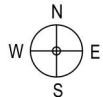
## A2 - BUILDING

10th & 12th Floor Plan

FLAT NO.	FLAT CARPET AREA		ENCLOSED BALCONY		DRY BALCONY		TERRACE	
	(Sq m)	(sq ft)	(Sq m)	(sq ft)	(Sq m)	(sq ft)	(Sq m)	(sq ft)
1001, 1201	38.74	416.99	2.08	22.38	0	0.00	5.22	56.18
1002, 1202	43.86	472.10	9.78	105.27	2.17	23.35	4.76	51.23
1003, 1203	45.45	489.22	8.19	88.15	2.17	23.35	4.76	51.23
1004, 1204	38.74	416.99	2.08	22.38	0	0.00	5.22	56.18
1005, 1205	45.45	489.22	8.19	88.15	2.17	23.35	4.76	51.23
1006, 1206	43.86	472.10	9.78	105.27	2.17	23.35	4.76	51.23

**Note:**

The floor plan shown here are a possible furniture arrangement and utilization of various spaces on the basis of sanctioned plan for ease of understanding and it must be read in conjunction with sanctioned plans. Nomenclature of various rooms and spaces in these layouts/plans is just a suggestion and may not be the same as in the sanctioned plans. Purchase decision should be made on the basis of sanctioned plans and proposed sanctioned plans only. A copy of detailed sanction plans and layout can be viewed in our corporate office or Maha RERA website. Dimensions and area shown in feet, inches and sq ft for customer's convenience only. 1 foot = 0.3048 meter | 1 square meter = 10.7639 square feet. Metric system dimensions can be seen on engineering drawings and sanctioned plans. This drawing is not to scale. Minor area variation possible due to elevation. Appliances, electronics, furniture, fixtures etc are not included with the flat. Plumbing layout may be subject to change. Column positions are subject to change. Plans shown here are with enclosed balcony as permitted in sanctioned municipal drawings. All room dimensions shown are before plastering i.e. unfinished wall to unfinished wall. Dado tiling with plaster on bathroom walls is considered as 25mm thickness.









WLP  
Waltons  
BreadTalk



P

40



# Location Map

