



imagine that place



not so far away

not so out of reach



welcome to

 safal VIVAN

*where space is
not just an idea but
an experience*

 safal VIVAN



PHASE 1

PLOT NO.	Saleable plot area (In Sq Yds)				
1	392	27	178	53	178
2	312	28	267	54	178
3	312	29	267	55	178
4	312	30	178	56	178
5	312	31	178	57	178
6	312	32	178	58	178
7	312	33	334	59	178
8	288	34	362	60	362
9	288	35	178	61	357
10	288	36	178	62	193
11	288	37	178	63	193
12	375	38	267	64	193
13	354	39	267	65	193
14	267	40	178	66	193
15	267	41	178	67	193
16	267	42	356	68	193
17	267	43	354	69	193
18	290	44	178	70	193
19	290	45	178	71	193
20	290	46	178	72	193
21	290	47	178	73	193
22	290	48	178	74	193
23	290	49	178	75	193
24	377	50	178	76	193
25	356	51	178	77	193
26	178	52	178	78	378

PHASE 2

PLOT NO.	Saleable plot area (In Sq Yds)				
1	599	25	356	49	272
2	476	26	360	50	354
3	431	27	356	51	354
4	397	28	295	52	282
5	373	29	299	53	263
6	359	30	296	54	182
7	355	31	386	55	182
8	331	32	391	56	182
9	343	33	464	57	364
10	363	34	296	58	382
11	390	35	299	59	194
12	564	36	295	60	194
13	464	37	380	61	194
14	272	38	188	62	281
15	272	39	188	63	301
16	272	40	188	64	377
17	272	41	188	65	377
18	295	42	188	66	290
19	295	43	188	67	290
20	295	44	379	68	290
21	295	45	356	69	290
22	295	46	272	70	372
23	295	47	272		
24	354	48	272		

SARKHEJ - GANDHINAGAR - HIGHWAY

safal VIVAAAN
twin house (4 BHK)



basement
twin house



ground floor plan
twin house

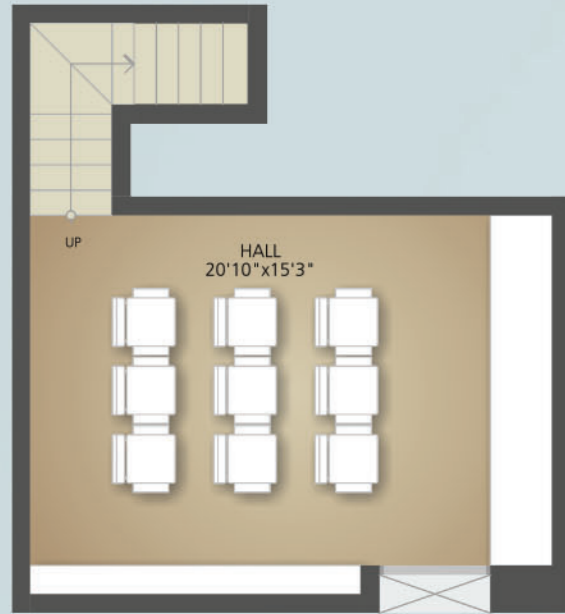


first floor plan
twin house



second floor plan
twin house

safal VIVAAN
twin house (5 BHK)



basement
twin house



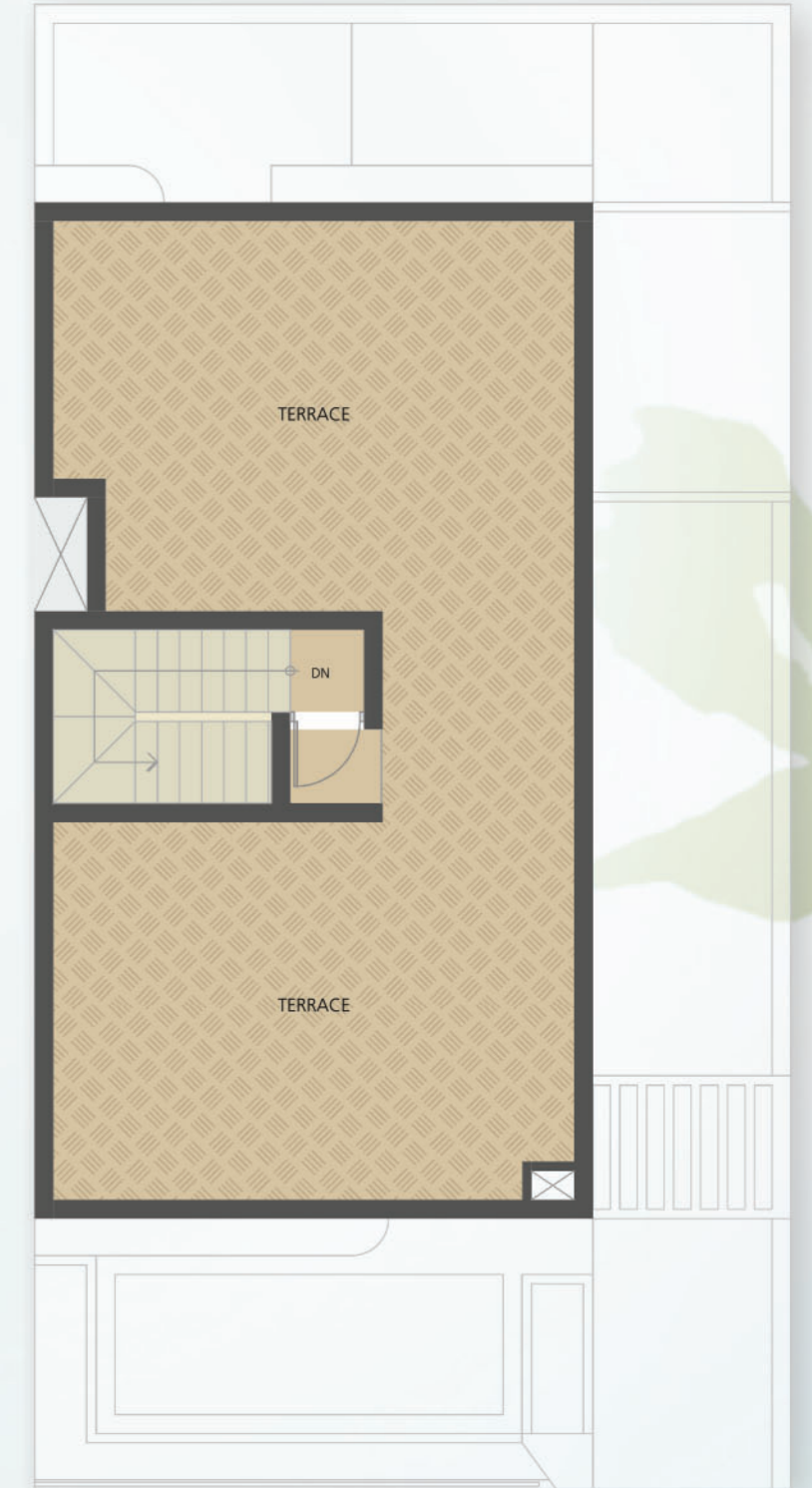
ground floor plan
twin house



first floor plan
twin house



second floor plan
twin house



terrace plan
twin house

safal VIVAAAN
duplex (4 BHK)



basement plan
duplex



ground floor plan
duplex

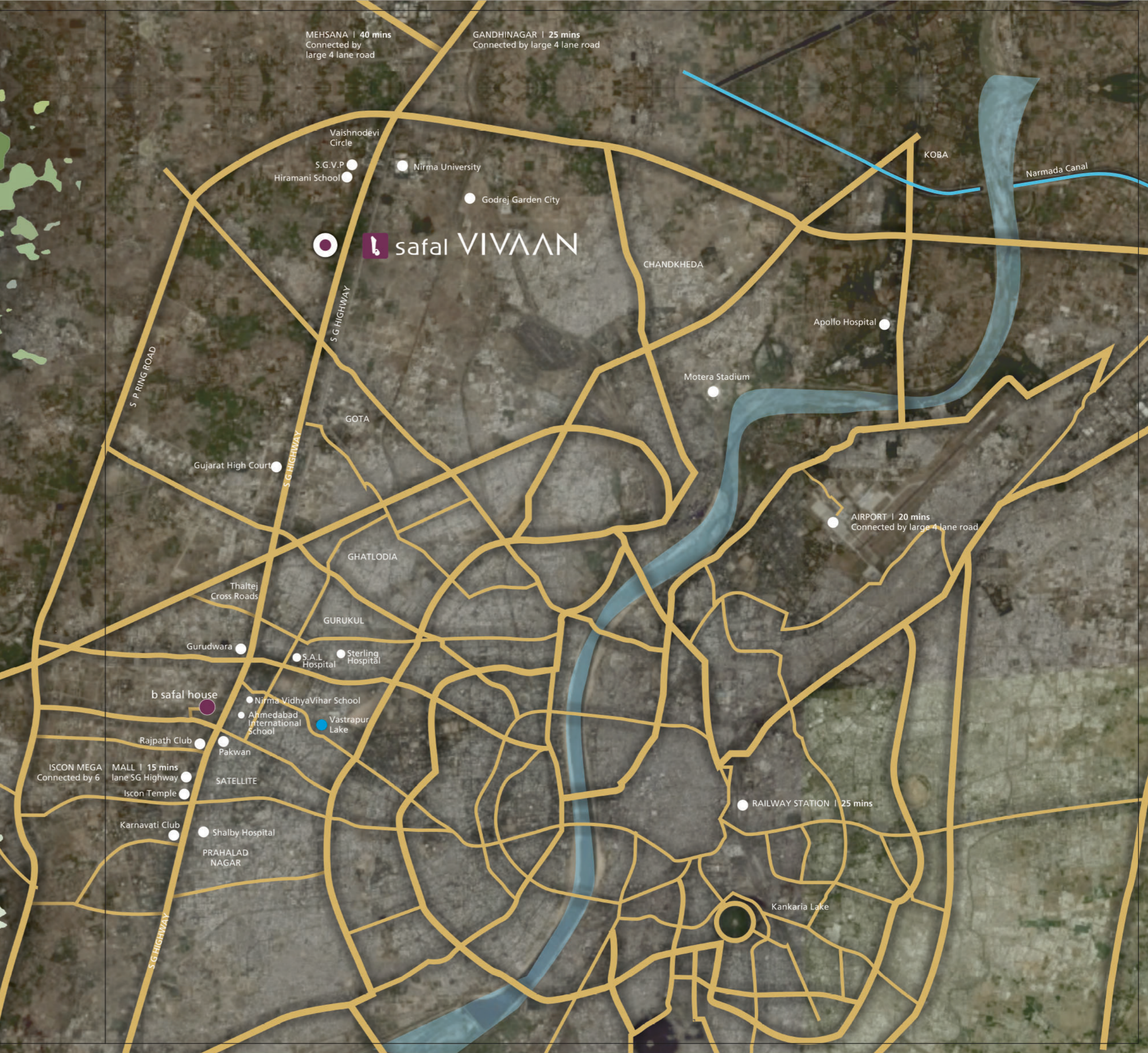



first floor plan
duplex




second floor plan
duplex

stay connected



 HCP DESIGN & PROJECT MANAGEMENT PVT. LTD.

Vivaan is designed by HCP Design and Project Management Pvt. Ltd., a 50 years old Architecture firm headed by Architect Dr. Bimal Patel. Some of the significant projects like : Indian Institute of Management, Ahmedabad; The Gujarat High Court; Kankaria Lakefront Development; Cadila Healthcare and National Institute of Port Management; Entrepreneurship Development Institute have been designed by HCP.

 safal ongoing projects



rare amenities

- Two year's maintenance by bSafal's in-house post-possession care & management services
- Back-up generator for all common services
- Garden with children's play area
- Gym with modern equipments
- Round the clock security by professional agency
- 24/7 CCTV surveillance
- Audio communication from guard unit to respective homes
- Swimming pool
- Separate club house for indoor games
- Flat slab in drawing & dining area

specific notes

- Commencement and timely execution of the project is subject to all necessary approvals from relevant govt. authorities, occurrence of natural calamities on any other external factors beyond developer's control.
- Safal Constructions Pvt. Ltd. is constantly seeking ways to improve the product and hence alterations take place continually. While every effort is made to produce up-to-date literature, this brochure should not be regarded as an infallible guide to current specifications, or does it constitute an offer for the sale of any particular unit.
- The dimensions shown in the brochure are approximate.
- The developer reserves the right to change, revise or make any modification, addition, omission or alteration in the scheme as a whole or part thereof, at their sole discretion.
- The brochure is only for illustration & private circulation purpose & is not a legal document or a binding one.
- Government levies like Stamp Duty, Registration charges, Legal charges, Service Tax, VAT and any other additional charge to be borne by the member.
- Subject to Ahmedabad Jurisdiction.

specifications

Garden and Play Area

- A spacious and perfectly landscaped garden with lush greenery
- Play area for children with various play equipments

Air Conditioning

- Air conditioner in drawing room and dining room.

Structure

- Earthquake resistant load bearing structure

Paints

- Wall plaster / putty finish (internal)
- Sand -faced plaster with acrylic paint (external)

Ceiling

- Flat slab in drawing & dining area
- False ceiling & moulding, wherever required

Main Door

- Approved fire-rated timber door
- Polished natural veneer door with quality locksets

Doors & Windows

- Flush doors (Godrej or equivalent)
- Anodised aluminium glass sliding windows / UPVC with stone revil

Living Room

- Italian/Imported marble flooring in living/drawing room, dining and passage area
- Balconies and terraces with anti-skid ceramic tiles

Bedroom

- Wooden flooring in the master bedroom
- Vitrified flooring in the other bedrooms

Kitchen

- Vitrified tile flooring
- Polished granite platform
- Stainless steel sink with drain board
- Garbage crusher
- Ceramic tile dado above granite counter
- Kota stone shelf in store room
- Kota stone floor in wash area

Bathroom & Toilets

- Ceramic tiles for flooring and dado
- Marble counter
- High quality plumbing fixtures
- Power shower with glass cubicle in master bedroom
- Wall-hung EWC

Electrical

- Concealed conduits with copper wires (Finolex or equivalent)
- Sufficient points for power & lighting (MK fittings or equivalent)
- Provision for cable and telephone point in all the bedrooms
- Protective M.C.B. for all sockets

*when was the last time you looked up ...
and all you could see were the leaves and the sky !!*



Safal Constructions Private Limited

bSafal House, Near Tej Motorts, B/h. Mirch Masala Restaurant, Off SG Highway, Ahmedabad-380059.
Call 079 61900900 bsafal.com enquiry@bsafal.com

Site Office :  safal VIVAAN , Between Gota Circle & SGVP, SG Highway, Ahmedabad.