


*Soar to New Heights!*

  
TWIN ARCS  
*1, 2 & 2.5 BHKs  
at Punawale*

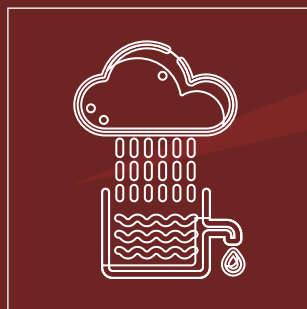
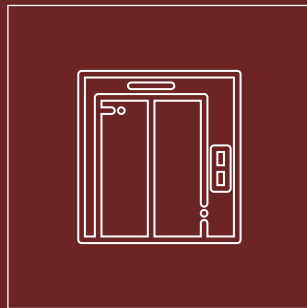
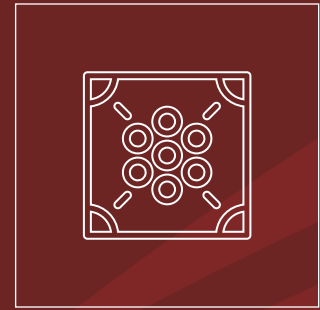
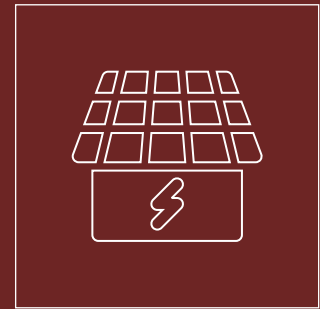
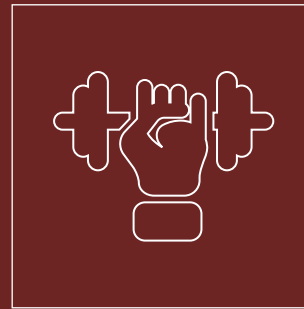




This perspective image may not be to the scale or may not represent actual façade / elevation. The details of windows, paints, elevation features, landscaping, ground development, trees etc. in this perspective is an artist's impression and would be different to actual construction of building and development. The viewers affirm that he / she has not taken his / her decision of purchase / booking by viewing this perspective. The company is not responsible for the action of the viewer's booking / purchasing a unit relying on this perspective.

# Amenities

- *Gymnasium area*
- *Children's play area*
- *Garden in open space area with sit out*
- *Indoor games area*
- *DTH connection*
- *Solar water heater in one bathroom*



- *3 lifts with generator back up*
- *Garbage chute*
- *Video door phone with intercom facility*
- *Security cabin*
- *Fire fighting system*
- *Rain water harvesting*

# Specifications

## **STRUCTURE**

- Strong RCC structure

## **BRICKWORK AND PLASTER**

- AAC block walls for lower heat transmission and prevention of pollution and erosion of fertile soil (no red bricks)
- Gypsum-finish surface to inner walls in the entire apartment
- All ceilings in the apartment patra finished in POP

## **ELECTRICAL**

- Branded fire-retardant copper wiring with ELCB
- Modular sockets and switches of reputed brand
- TV and telephone point in living room and master bedroom

## **KITCHEN**

- Granite kitchen platform with SS sink
- Glazed tiles up to 2 feet from platform
- Adequate electrical points for microwave, fridge, and exhaust fan
- Washing machine, plumbing and electrical point in dry terrace

## **FLOORING**

- 24x24 inch vitrified tiles with matching 3 inch skirting in the entire apartment
- 16x16 inch ceramic tiles in dry balcony/terraces

## **DOORS**

- Elegant both-side laminated main door & night latches
- All internal doors with both side laminates
- Toilet door frames with polished granite
- All door fittings in chrome plated & cylindrical locks for internal doors

## **TOILET**

- CPVC plumbing and branded sanitary ware
- Glazed tiles up to 7 feet height with premium CP fittings
- Provision for exhaust fan and boiler electrical points
- Solar water heater supply in one bathroom

## **WINDOWS**

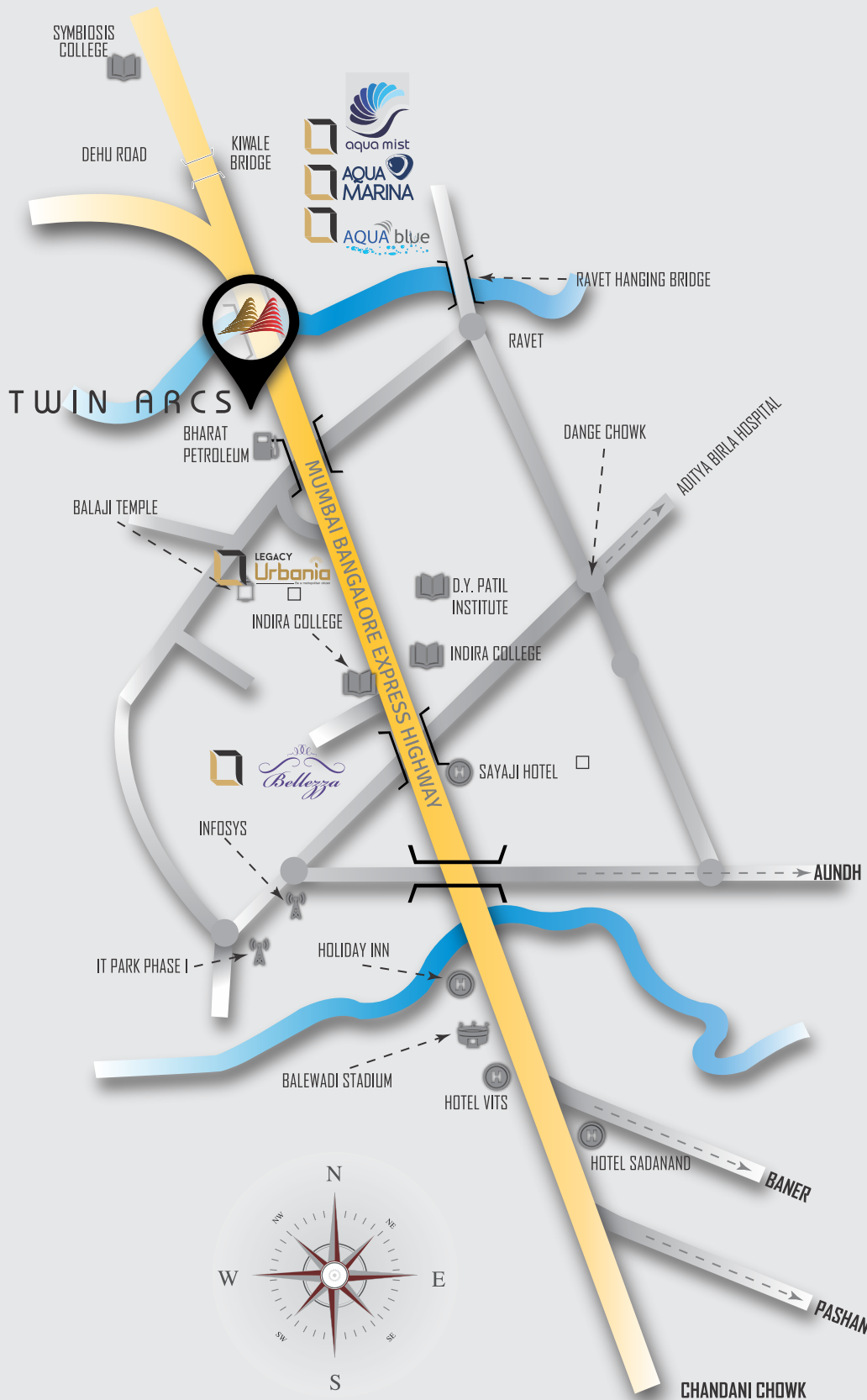
- Sliding 3-track windows with aluminium power-coat along with mosquito mesh
- MS safety grills with oil paint to all windows
- Good quality granite window sills from inside.

## **PAINT**

- Oil-bound distemper (OBD) to all inside walls
- Weather proof acrylic good quality external paint



# Location Map



## Around Twin Arcs

### Schools & Colleges

- Lotus Business School
- Blossom School
- Akshara International School
- Indira College Campus
- Symbiosis University
- D. Y. Patil University

### Hospital

- Life Point Hospital
- Golden Care Hospital
- Aditya Birla Hospital
- Unique Multi-Speciality Hospital
- Surya Hospital

### Supermarket

- Spinach Supermarket
- R-Mart
- Big Bazaar

### Restaurants & Malls

- Vision Mall
- Xion Mall
- Ginger Hotel
- Sayaji Hotel
- Mughal Mahal
- Mezzaa 9
- Hotel Kiva
- Hotel Blue Water

Distances in location map are not to scale.

# Successfully Completed Project



This project is registered under RERA.  
**Registration No. P52100001145**  
[www.maharera.mahaonline.gov.in](http://www.maharera.mahaonline.gov.in)



In Association with



Satisfaction Simply Delivered.

*Site Address:*

*Sr. No. 45, Near Bharat Petroleum, Off Mumbai - Bengaluru Highway,  
Punawale, Pune - 411033. Tel.: 91 88887 70022*

*Corporate Office:*

*Office No. 406, Rainbow Plaza, Rahatani, Pune - 411 027.*

*Tel.: 020 4674 1000 | 020 4674 2000*

*Email: [twinarcs@legacylifespaces.com](mailto:twinarcs@legacylifespaces.com)*

*Website: [www.legacylifespaces.com](http://www.legacylifespaces.com)*

