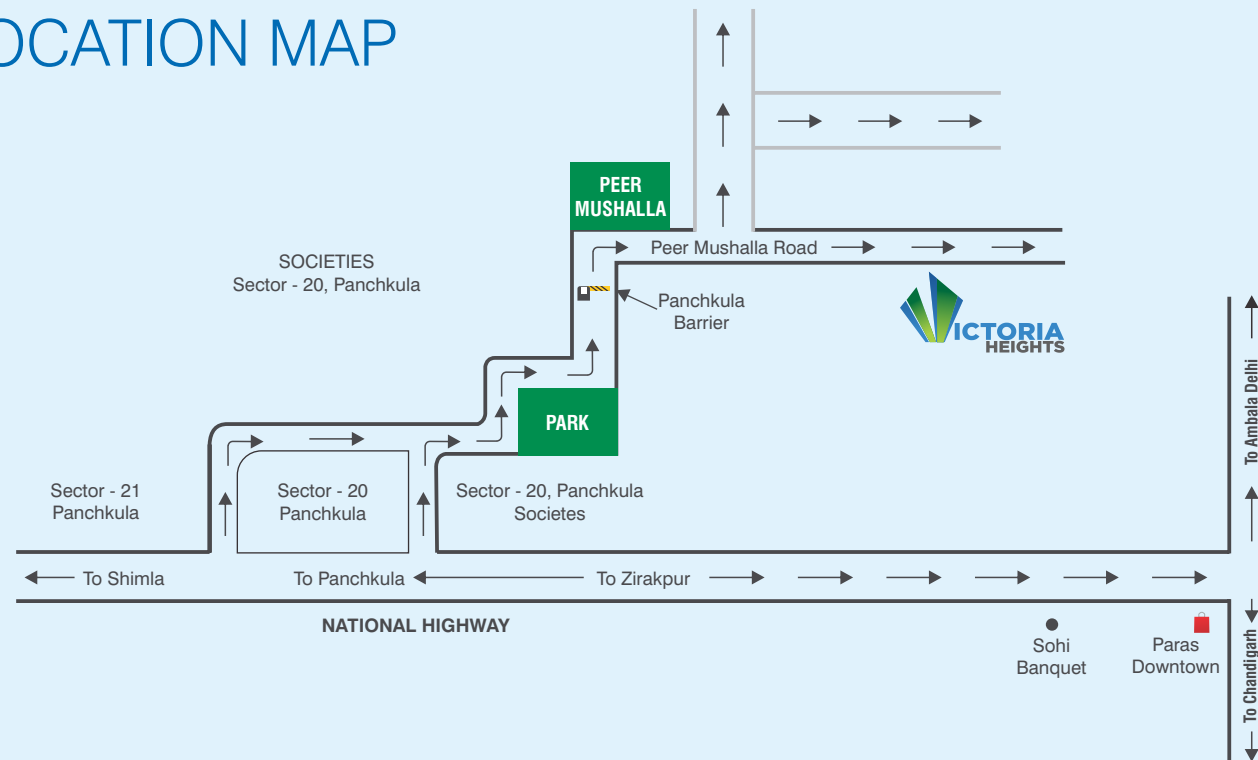


LOCATION MAP



FORTUNE MULTITECH PVT. LTD.

For over two decades, Chandigarh - North India's largest City has witnessed a dramatic transformation in it's people's lifestyle. We, at Fortune Multitech have been privileged to play a constructive role in this mammoth evolutionary exercise. A professionally to excellence that greets our customers at the doors of every Fortune Multitech home, each day of the year.

Fortune Multitech enjoys a reputation for quality which you can always bank on. A commitment towards quality taht is endorsed by major housing finance companies and institutions helping bring your dream house into a reality of today. With a vision to build houses for all, the group aims to continue offering luxury apartments at affordable prices to discerning citizens.



Corp. Office:
SCO 234, Sector 20, Panchkula, Haryana.

Site Address:
Victoria Heights, Sector-5, Peer Mushalla,
(Adjoining Sector 20, Panchkula) Zirakpur,
Distt. Mohali, Punjab - 140603

Contact: +91 88720-72029, 88720-72030

Price will be changing any time.
This brochure is not for legal purpose* only 3 BHK ready for possession.



3 BHK / 4 BHK & Duplex Pentahouses
Ready For Possession*



STOP DREAMING & START OWING A HOME TODAY !

Promising is the best of community living in an exclusive neighborhood, the wide-open spaces, recreational facilities, lush greenery, pollution free surroundings and wholesome living take precedence over everything else here.

HIGHLIGHTS

- Well Connected to the national highway
- Pollution-free surroundings
- 71% open area
- Independent towers
- Two Hi-speed lifts in each block
- Round the clock water supply
- 100% power back-up
- Ample parking space
- State-of-the-art club house
- Gymnasium & party hall
- Stylish swimming pool
- Elegantly designed 4 bedroom apartments & penthouses
- All apartments are corner apartments
- Bedroom privacy, Independent dining and living rooms
- Spacious balconies
- Airy bedrooms with wooden flooring
- Modish washrooms
- Top end modular kitchen



50 FAMILIES ALREADY LIVING HAPPILY...



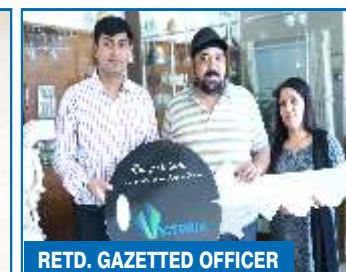
Actual Site Photographs



NRI FAMILY



BANK OFFICER



RETD. GAZETTED OFFICER



BANK OFFICER

3 BHK FLOOR PLAN

(Super Area 1800 Sq. Ft.)



4 BHK FLOOR PLAN

(Super Area 2365 Sq. Ft.)



We believe where you live says a lot about who you are. At Victoria Heights, the residents get a chance to reconnect with nature and experience the sweet innocence of the world with a harmonious blend of excellent design and lush green spaces all around.

The corner 3 bedroom apartment and penthouses allow an excellent view of the beautiful landscaper gardens designed to perfection with exquisite waterfalls and fountains adding a dash of magic to the community.



The innovative use of space in living and dining room matched with vitrified tiles, along with pleasing shades of OBD/ plastic emulsion on walls and ceilings with quality finish, fitting perfectly within the concept of a modern family home.



The elegantly designed bedrooms with wooden flooring and laminated wardrobes bring a great sense of personal space. The airy bedrooms extend out to the spacious balconies, picturing an enchanting of the landscaper gardens outside.



The stunningly fitted top of the line modular kitchen in the apartment is a treat to the eyes. The use of glistening tiles on the floor, the sleek counter top, tailor made cabinets and the stainless faucets make cooking a delight.

PRICE LIST & PAYMENT PLAN

DESCRIPTION	APARTMENT/4BHK (2365 Sq.Ft.)	DUPLEX/PENTHOUSE 4BHK (3050 + 600 Sq.Ft.)
Basic Sales Price	68,00,000/-	95,50,000/-
Terrace Charges	Nil	Nil
Preferential Location Charges - Park Facing**	2,00,000/-	2,00,000/-
Floor Premium Charges (1 st floor)**	4,50,000/-	Nil
Floor Premium Charges (2 nd floor)**	3,50,000/-	Nil
Floor Premium Charges (3 rd Floor)**	2,50,000/-	Nil
Floor Premium Charges (4 th Floor)**	1,50,000/-	Nil
Floor Premium Charges (5 th Floor)**	50,000/-	Nil
Club membership charges**	50,000/-	50,000/-

CONSTRUCTION LINK PAYMENT PLAN		
1. Booking amount	10% of BSP (Basic sale price) + Service Tax	all payments
2. Within 45 days from date of booking	15% of BSP (Basic sale price) + FPC if any	
3. On start of foundation	10% of BSP (Basic sale price)	
4. On start of stlit roof slab	10% of BSP (Basic sale price) + PLC	
5. On start of second floor roof slab	10% of BSP (Basic sale price)	
6. On start of 4th floor roof slab	10% of BSP (Basic sale price)	
7. On start of 6th floor roof slab	10% of BSP (Basic sale price)	
8. On start of 9th floor roof slab	7.5% of BSP (Basic sale price) + Power Backup + Club Membership	
9. On start of flooring	7.5% of BSP (Basic sale price)	
10 On start of false ceiling	5% of BSP (Basic sale price)	
11. On offer of possession of flat	5% of BSP (Basic sale price) + Stamp Duty + IFMS + any other charges	

- Note:
- 1. These installments are the subsequent installments in the above instal plan which shall become payable on demand irrespective of the serial order in which they are listed above.
 - 2. Price indicated above our subject to revision at the discretion of the company. Price ruling on the date of booking and acceptance by the company shall be applicable.
 - 3. Power backup 90,000/-** for 3KVA. If additional load is required. It will be charged for 35,000/-** per KVA approx. (subject to availability).
 - 4. Interest free maintenance security (IFMS) @ 50/-** per sq. ft. shall be payable at the time of notice for possession.
 - 5. Cost of the stamp duty and registration fee / Documentation charges service tax etc. as applicable shall be borne by thintending allotte(s) on actual.
 - 6. Variety of housing loans from private / public banks.
 - 7. Service tax as applicable with be payable with every installment.
 - 8. Pay order / draft / Cheque to be issued in favour of "Fortune Multitech Pvt. Ltd." payable at Chandigarh.
- *These prices are additional to BSP.

Contact: +91 88720-72029, 88720-72030

SPECIFICATIONS FOR 4 BHK ONLY

LIVING / LOBBY			
Flooring & Skirting	—	Virtified Tiles	
Walls & Ceiling	—	Plastic Paint/Texture on main wall/wallpaper & false ceiling	

DINING ROOM			
Flooring & Skirting	—	Virtified Tiles	
Walls & Ceiling	—	Plastic Paint/Texture on main wall/wallpaper & false ceiling	

BEDROOMS			
Flooring & Skirting	—	Laminated wooden flooring in master bedroom & vitrified tiles in other bedrooms	
Walls & Ceiling	—	Plastic Paint/Texture on main wall/wallpaper & false ceiling	
Wardrobes	—	Laminated wardrobe in each bedroom	

KITCHEN			
Flooring & Skirting	—	Virtified Tiles	
Walls & Ceiling	—	Plastic Paint	
		Ceramic tiles upto 2-ft. height above counter	
Cabinets	—	Modular kitchen and cabinets of laminated finishes	
Sink	—	Stainless steel sink	

TOILETS			
Flooring & Wall finishing	—	Ceramic tiles upto ceiling	
Fittings	—	CP fittings/chinaware of reputed brand	

DOOR AND WINDOWS			
Hard wood frames and all Panel Doors			

BALCONY			
Flooring & Skirting	—	Ceramic tiles	

ELECTRICAL			
Copper wiring ISI mark, MCB'S & sufficient light & power points in all rooms.			

Victoria Heights Site Plan

