

SERAMPORE STN

Serampore

SITE

Titagarh

Patulia

Titagarh

Rishra

Rahara

Khardaha

Rishra

Nabagram

Sukchar

Natagarh

Konnagar

Sodepur

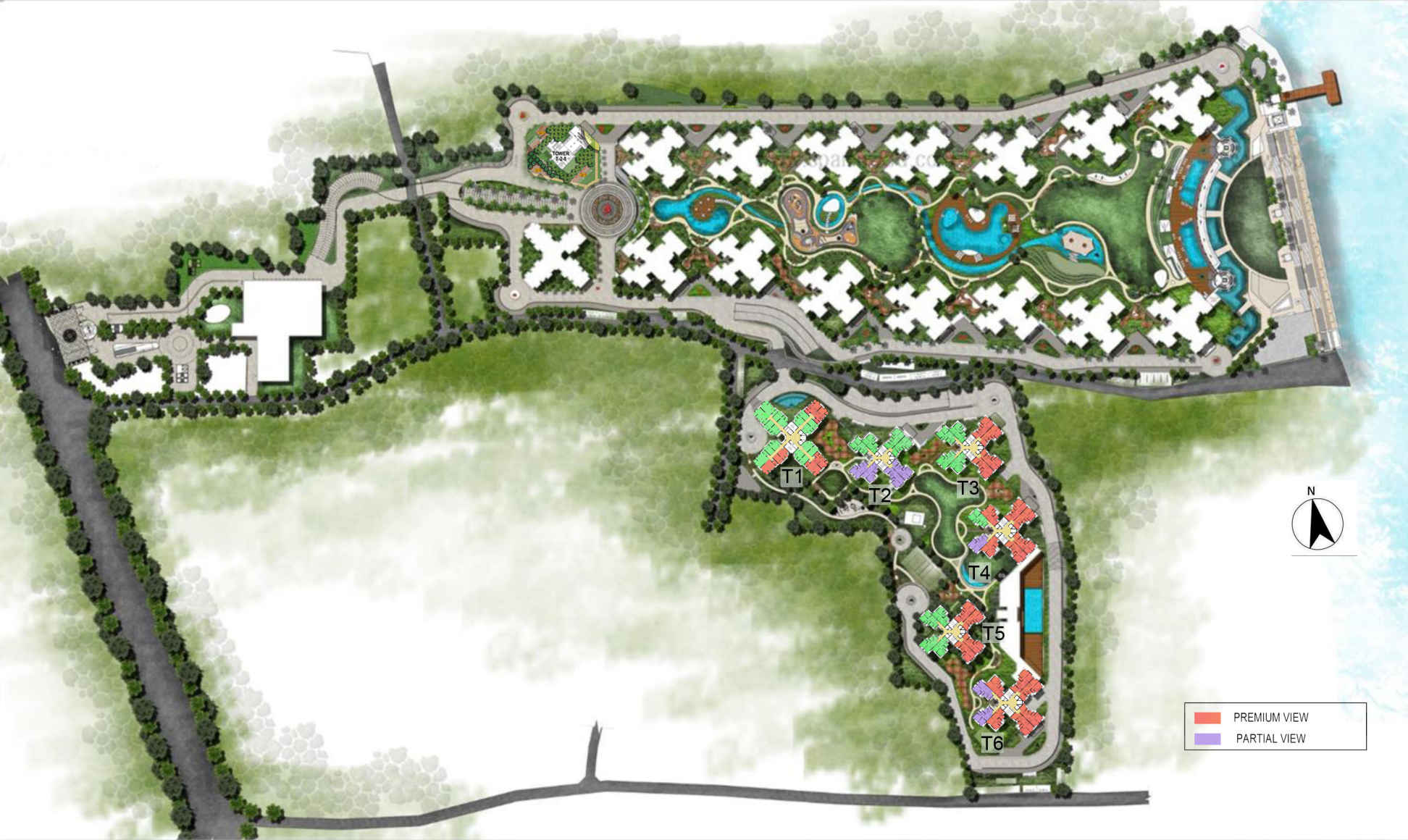
Panihati


Panihati

Hindmotor

Agarpara

Bashinota



- |  |              |
|--|--------------|
|   | PREMIUM VIEW |
|  | PARTIAL VIEW |



JAGANNATH GHAT LANE

TO RIVER HOOGLY

**LEGEND: PODIUM LEVEL:**

- P301 TOWER ENTRANCE COURT/ ADDA ZONE
- P303 MOUND WITH SCULPTURE
- P304 MEANDERING JOGGING TRACK
- P305 SITTING UNDER TRELLIS
- P306 KIDS' PLAY COURT
- P307 MOUNDS WITH SCREEN PLANTING
- P308 WALKWAY THROUGH PORTALS
- P309 GARDEN PAVILIONS (2 NOS.)
- P310 COMMUNITY GATHERING
- P311 YOGA/ MEDITATION LAWN
- P312 CLUB GREEN AREA
- P313 WATER FEATURE WITH NOZZLES
- P314 POOL DECK
- P315 INFINITY MAIN SWIMMING POOL
- P316 KIDS' POOL
- P317 OUTDOOR GYM
- P318 LAWN

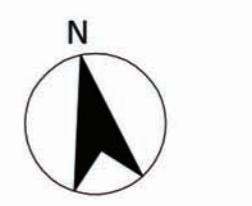
**LEGEND: HARD LANDSCAPE**

- | LEGEND | DESCRIPTION  |
|--------|--|
|        | PAVING FOR CONNECTING PATHWAYS & SITTING UNDER TRELLIS IN RED GRANITE; FINISH: SHOT BLASTED & BRUSHED. |
|        | ADDA ZONE PAVING IN WPC (WOOD PLASTIC COMPOSITE)   |
|        | JOGGING TRACK PAVING IN LIGHT BROWN GRANITE; FINISH: SHOT BLASTED & BRUSHED.                           |
|        | STEPPING STONES IN LIGHT BROWN GRANITE; FINISH: SHOT BLASTED & BRUSHED.                                |
|        | SYNTHETIC SURFACE FOR KIDS' PLAY AREA  |
|        | POOL DECK IN WPC (WOOD PLASTIC COMPOSITE)  |

- | LEGEND | DESCRIPTION   |
|--------|---|
|        | WATER FEATURE & SWIMMING POOL IN PORCELAIN TILES; COLOR: AS APPROVED. |
|        | SEAT COPING & CLADDING IN RED GRANITE; FINISH: POLISHED.              |
|        | TRELLIS IN MS MEMBERS, PAINTED IN CHARCOAL GREY COLOR.                |
|        | PORTALS IN MS MEMBERS, PAINTED IN CHARCOAL GREY COLOR.                |
|        | SCULPTURES IN ABSTRACT THEME  |
|        | ENTRY/ EXIT POINTS  |

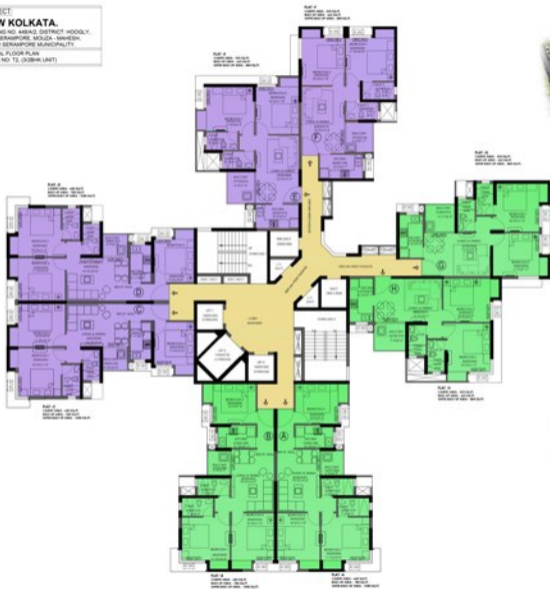
**LEGEND: SOFT LANDSCAPE**

- | LEGEND | DESCRIPTION                         |
|--------|-------------------------------------|
|        | PLANTER/ PLANTING BED               |
|        | LAWN                                |
|        | ORNAMENTAL FOLIAGE/ FLOWERING TREES |
|        | ORNAMENTAL PALM TREES               |



**PROJECT:**  
**NEW KOLKATA.**

HOLDING NO. 48B/2, DISTRICT HOOGLY,  
P.3 - SERAPORE MOUKA - MAHESH,  
UNDER SERAPORE MUNICIPALITY.  
TYPICAL FLOOR PLAN  
BLOCK NO. T2, (32B/4 UNIT)



 PREMIUM VIEW  
 PARTIAL VIEW



**PROJECT:**  
**NEW KOLKATA.**  
 HOLDING NO. 449/A/2, DISTRICT: HOOGLY,  
 P.S. - SERAMPORE, MOUZA - MAHESH,  
 UNDER SERAMPORE MUNICIPALITY.

**TYPICAL FLOOR PLAN**  
**BLOCK NO: T3, (3/2BHK UNIT)**

**FLAT - F**  
 CARPET AREA - 533 SQ.FT.  
 BUILT-UP AREA - 663 SQ.FT.  
 SUPER BUILT-UP AREA - 884 SQ.FT.

**FLAT - E**  
 CARPET AREA - 533 SQ.FT.  
 BUILT-UP AREA - 663 SQ.FT.  
 SUPER BUILT-UP AREA - 884 SQ.FT.

**FLAT - G**  
 CARPET AREA - 533 SQ.FT.  
 BUILT-UP AREA - 663 SQ.FT.  
 SUPER BUILT-UP AREA - 884 SQ.FT.

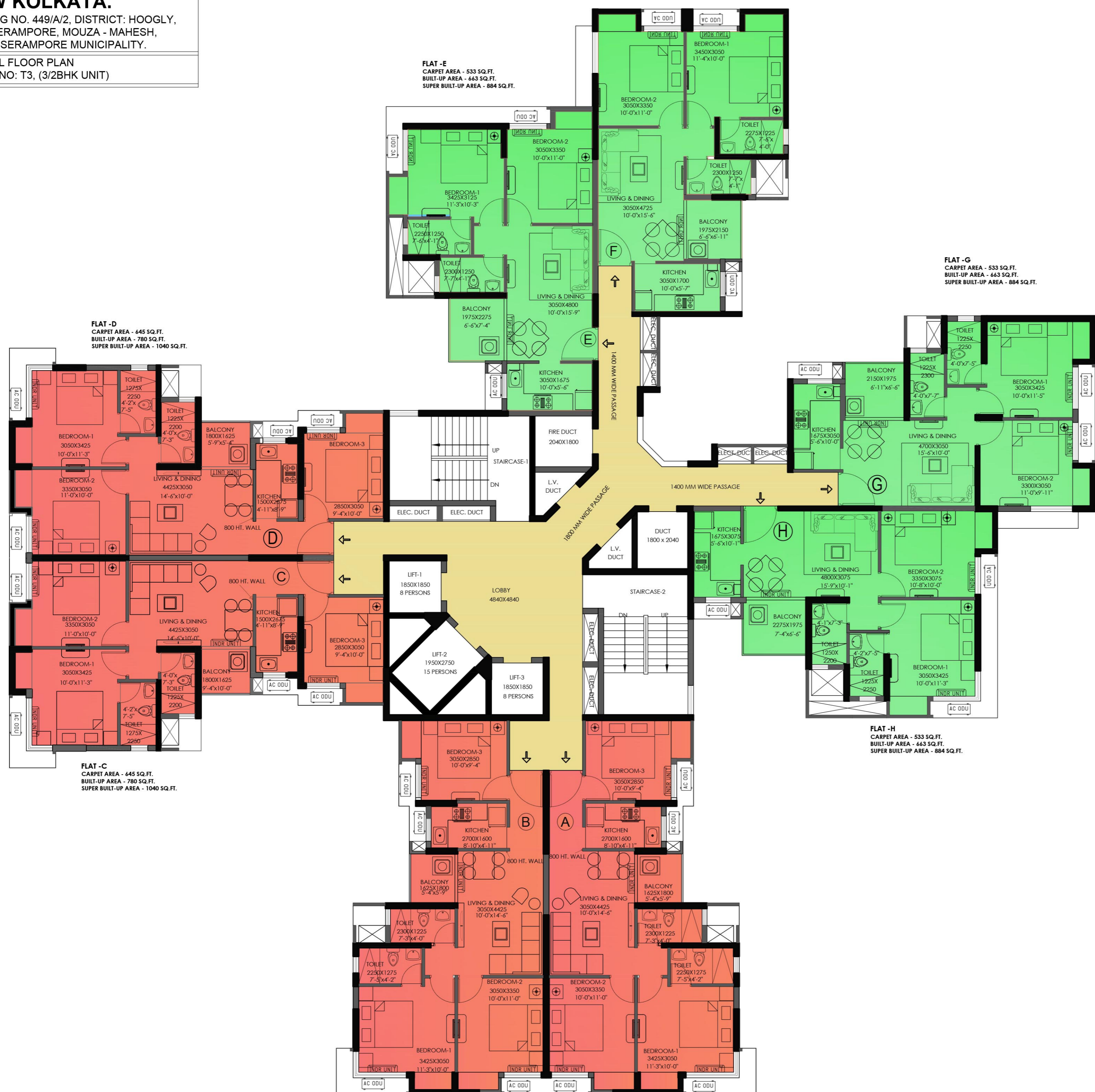
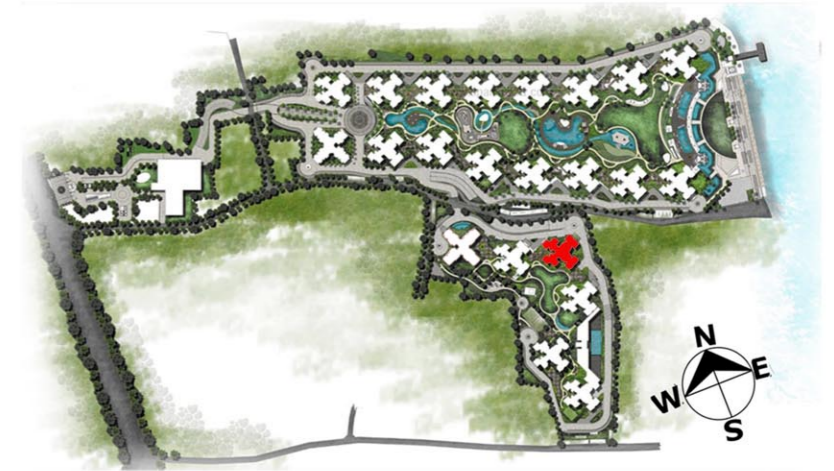
**FLAT - D**  
 CARPET AREA - 645 SQ.FT.  
 BUILT-UP AREA - 780 SQ.FT.  
 SUPER BUILT-UP AREA - 1040 SQ.FT.

**FLAT - C**  
 CARPET AREA - 645 SQ.FT.  
 BUILT-UP AREA - 780 SQ.FT.  
 SUPER BUILT-UP AREA - 1040 SQ.FT.

**FLAT - H**  
 CARPET AREA - 533 SQ.FT.  
 BUILT-UP AREA - 663 SQ.FT.  
 SUPER BUILT-UP AREA - 884 SQ.FT.

**FLAT - B**  
 CARPET AREA - 645 SQ.FT.  
 BUILT-UP AREA - 780 SQ.FT.  
 SUPER BUILT-UP AREA - 1040 SQ.FT.

**FLAT - A**  
 CARPET AREA - 645 SQ.FT.  
 BUILT-UP AREA - 780 SQ.FT.  
 SUPER BUILT-UP AREA - 1040 SQ.FT.



■ PREMIUM VIEW  
■ PARTIAL VIEW

