

LOCATION MAP



KEY HIGHLIGHTS

Ongoing developments:

North Eye, Sector 74, Noida | ORB, Sector 74, Noida | Supernova, Sector 94, Noida | E-Square, Sector 96, Noida | The Romano, Sector 118, Noida | Hill Town, Sector 2, Gurgaon - Sohna Road | Aadri, Sector 79 & 79B, Gurgaon & many more.

Landmarks Delivered:

34 Pavilion, Sector 34, Noida | Capetown, Sector 74, Noida | Eco Village 1 - Greater Noida (W) | Eco Village 2 - Greater Noida (W) | Oxford Square - Greater Noida (W) | Ecociti, Sector 137, Noida Expressway | Supertech Emerald Court, Sector 93-A, Noida Expressway & many more

Milestones:

Projects across 50 plus locations • More than 60,000 satisfied customers • Projects worth INR 500 billion in progress • More than 80,000 units and 120 million sq. ft. of Real Estate under development • Over 30 years of delivering world class projects in Residential, Retail, Hospitality IT Parks, Education and Corporate Spaces • More than 40,000 units delivered having overall area of 50 million sq. ft. • 22,527 units successfully delivered last three years • 17,600 units more to be delivered in FY 2018-19 • Making 40,000 affordable homes under PMAY.



Site office: Plot No. GH 06, Sector-16B, Greater Noida (West)
 Supertech Limited: Supertech House- B 28-29, Sector 58, Noida. Phone: 0120 4572600
www.supertechlimited.com | Toll Free: 1800 103 7676

RERA REGISTRATION NO.
 UPRERAPRJ8319

www.supertechlimited.com



2 BHK Apartments at Greater Noida (W)

**THE FIRST
 REASON
 TO BE AT GREATER NOIDA (W)**

*Conditions apply. All buildings, information, specification, etc. are tentative and subject to variation and modification by the company or the competent authorities sanctioning such plans. Images are for representative purpose only.
 *1 sq. mtr. is equal to 10.764 sq. ft. and 1 sq. mtr. is equal to 1.196 sq. yd. Note: The details of approvals may be seen in our office.



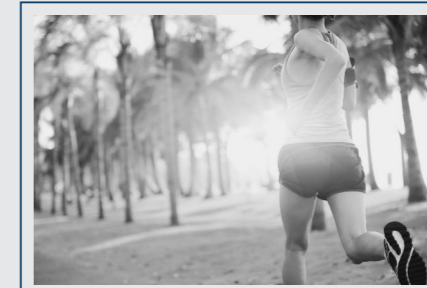
FEATURES



- 4 side open plot with 82% landscaped area
- Elegant interiors with rich specifications
- Reticulated gas supply in every apartment
- 24x7 CNG operated Power back-up
- In-house Shopping Arcade
- Ample parking space
- Club House with Banquet Hall and Indoor Games
- Health Club and Spa
- Tennis, Badminton Courts and Swimming Pool
- 60 meter wide road and metro connectivity



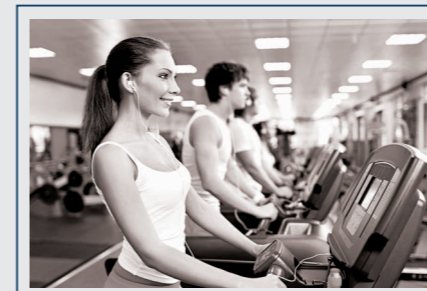
Kid's Play Area



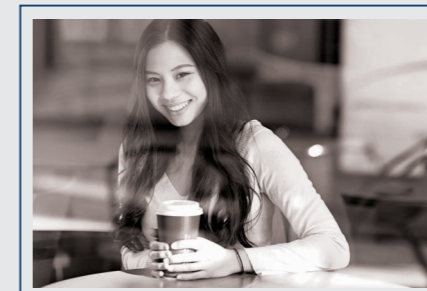
Jogging Track



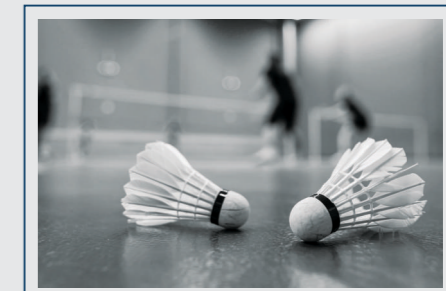
Landscaped Gardens



Gymnasium



Cafeteria



Badminton Court

IF THIS IS NOT ENOUGH WE HAVE SOME MORE

Swimming Pool, Medical Centre, Ayurvedic Massage Centre | In-house convenient Shopping Arcade, "Supertech Mart" | Earthquake resistant R.C.C. frame structure & non-load bearing brick walls | Intercom facility in all flats connected with security room and administration office | 4-sided open vastu-friendly fengshui layout & design | Round the clock customer care | Well-designed complex with beautiful landscape | Guard room at main entrance | Recycle bins across the campus | In-house garbage/sewage treatment plan | CNG operated power back-up generation | Every tower, well equipped with fire suppression system.



Artistic Impression

UNIT PLAN



2 BHK - Type 1	Size	Super Area	Carpet Area	Balcony Area	Builtup Area
Unit No. 1, 2, 3, 4, 6, 7 & 8	Sq.ft. Size	1065	596.3	148	808.8
Floor : 3rd, 5th, 7th, 9th, 11th, 13th, 15th, 17th, 19th, 21st, 23rd, 25th & 27th	Sq.mt. Size	98.94	55.4	13.8	75.14

UNIT PLAN

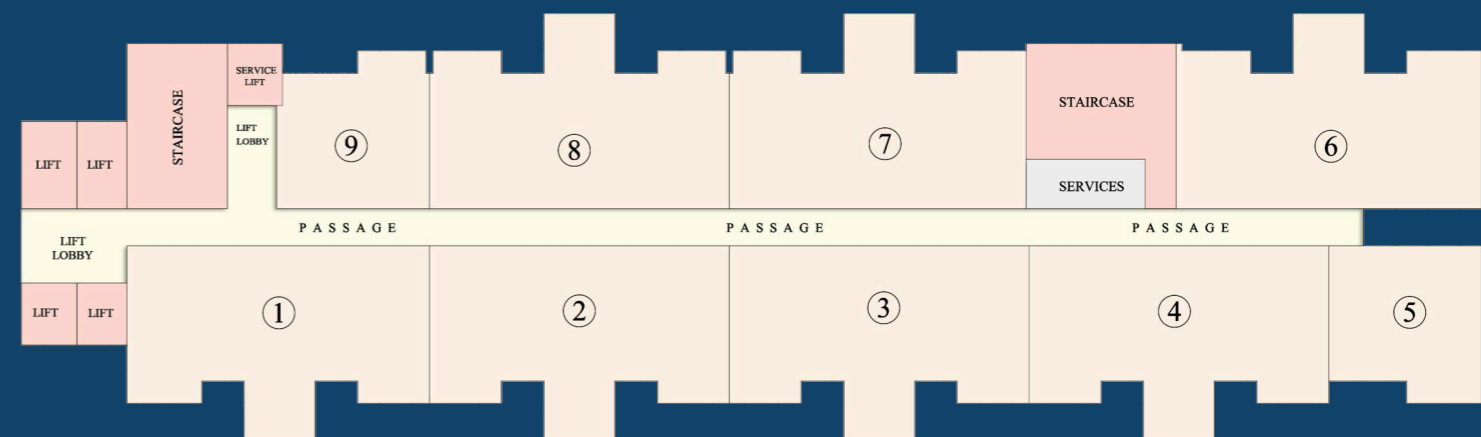


2 BHK - Type 3	Size	Super Area	Carpet Area	Balcony Area	Builtup Area
Unit No. 1, 2, 3, 4, 6, 7 & 8	Sq.ft. Size	1095	596.3	166	827.8
Floor : 6th, 10th, 14th, 18th, 22nd & 26th	Sq.mt. Size	101.73	55.4	15.42	76.9



2 BHK - Type 2	Size	Super Area	Carpet Area	Balcony Area	Builtup Area
Unit No. 1, 2, 3, 4, 6, 7 & 8	Sq.ft. Size	1095	596.3	166	827.8
Floor : 4th, 8th, 12th, 16th, 20th & 24th	Sq.mt. Size	101.73	55.4	15.42	76.9

CLUSTER PLAN



SITE PLAN



27
HEIGHTS

SPECIFICATIONS

LOCATION	FLOOR	EXTERNAL DOOR AND WINDOW	ELECTRICAL FITTINGS	WALLS	FITTINGS	INTERNAL DOOR	HARDWARE	ELECTRICAL	WATER SUPPLY	CEILING
LIVING ROOM	Vitrified Tiles	Powder Coated Aluminium	Sheet and Switches	Oil Bound Distemper	-	Flush Shutter with Wooden Frame	All doors and windows with metal fittings along with mortice lock on the main door	Copper wiring and PVC concealed conduit. Provision for adequate light and power points as well as Television and T.V. outlets with modular switches and protective M.C.B.'s	Underground and overhead water tanks with pumps and 24 hours water supply. Individual R.O. plant of standard make in each kitchen.	Oil Bound Distemper
DINING	Vitrified Tiles	Powder Coated Aluminium	Sheet and Switches	Oil Bound Distemper	-	Flush Shutter with Wooden Frame				Oil Bound Distemper
BEDROOM	Vitrified Tiles	Powder Coated Aluminium	Sheet and Switches	Oil Bound Distemper	-	Flush Shutter with Wooden Frame				Oil Bound Distemper
MASTER BEDROOM	Vitrified Tiles	Powder Coated Aluminium	Sheet and Switches	Oil Bound Distemper	-	Flush Shutter with Wooden Frame				Oil Bound Distemper
DRESSING ROOM	Vitrified Tiles	Powder Coated Aluminium	Sheet and Switches	Oil Bound Distemper	-	Flush Shutter with Wooden Frame				Oil Bound Distemper
SERVANT ROOM	Ceramic Tiles	Powder Coated Aluminium	Sheet and Switches	Oil Bound Distemper	-	Flush Shutter with Wooden Frame				Oil Bound Distemper
KITCHEN	Vitrified Tiles	Powder Coated Aluminium	Sheet and Switches	Ceramic Tiles of 2' height from the platform	Stainless Steel Sink with C.P. Fittings	Open				Oil Bound Distemper
TOILET	Ceramic Tiles	-	Sheet and Switches	Ceramic Tiles of 7' height	Washbasin WC & C.P. Fittings	Flush Shutter				False Ceiling Permanent Paint Finish
BALCONIES	Ceramic Tiles	-	Sheet and Switches	Oil Bound Distemper	-	-				-
LIFT	P.V.C. Flooring	-	Sheet and Switches	-	-	-				-
LOBBIES/CORRIDOR	Kota Stone / Vitrified Tiles	-	-	Oil Bound Distemper	-	-				-
EXTERIOR FINISH	-	-	-	Texture Paint	-	Flush Shutter with Wooden Frame				-