



*celebrate*

**Affordable  
Elegance**

VENUS<sup>®</sup>  
Parkheights  
2 BHK APARTMENT

# Venus Group - Rendezvous with Lifespaces

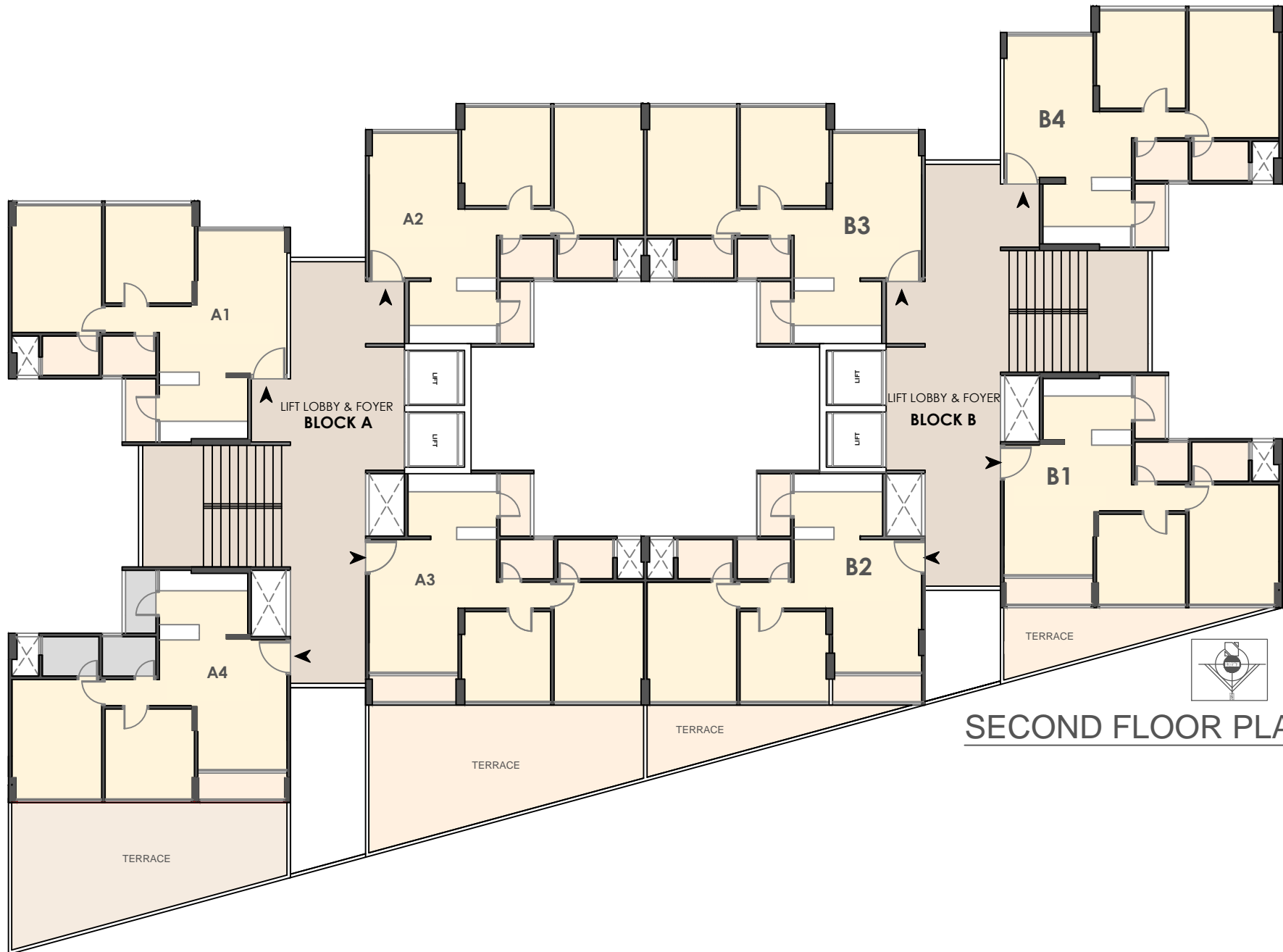
*"I create a life around the place where I live"*

Since time immemorial, the form of Lifespaces has evolved from a simple tree-house to present lavish creations. But the soul and purpose of creations is the same. And this forms the nucleus of Venus Lifespace Creators.

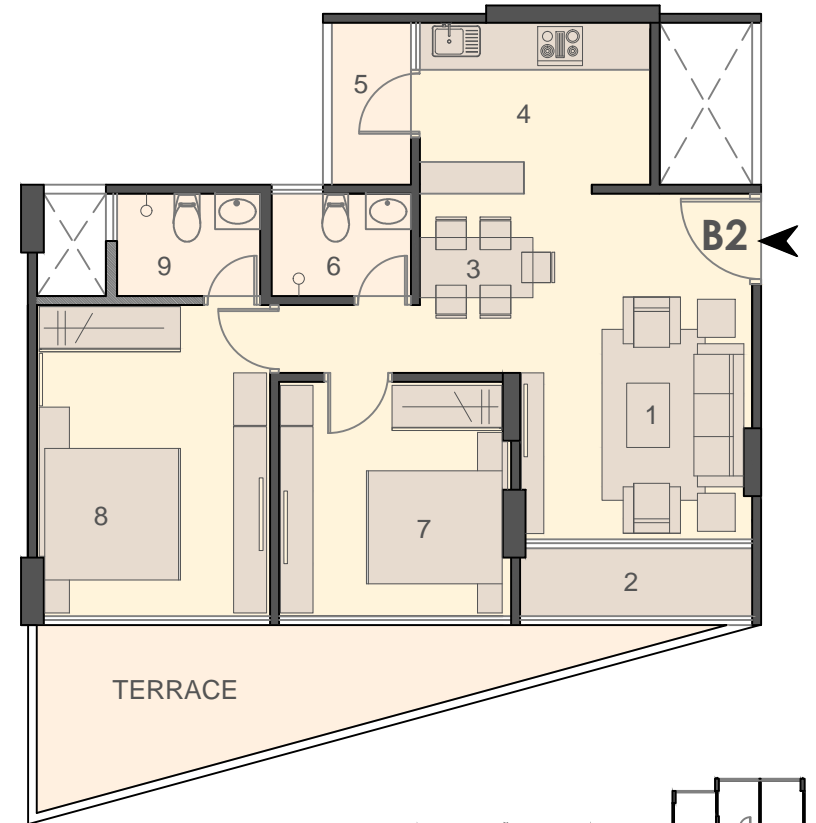
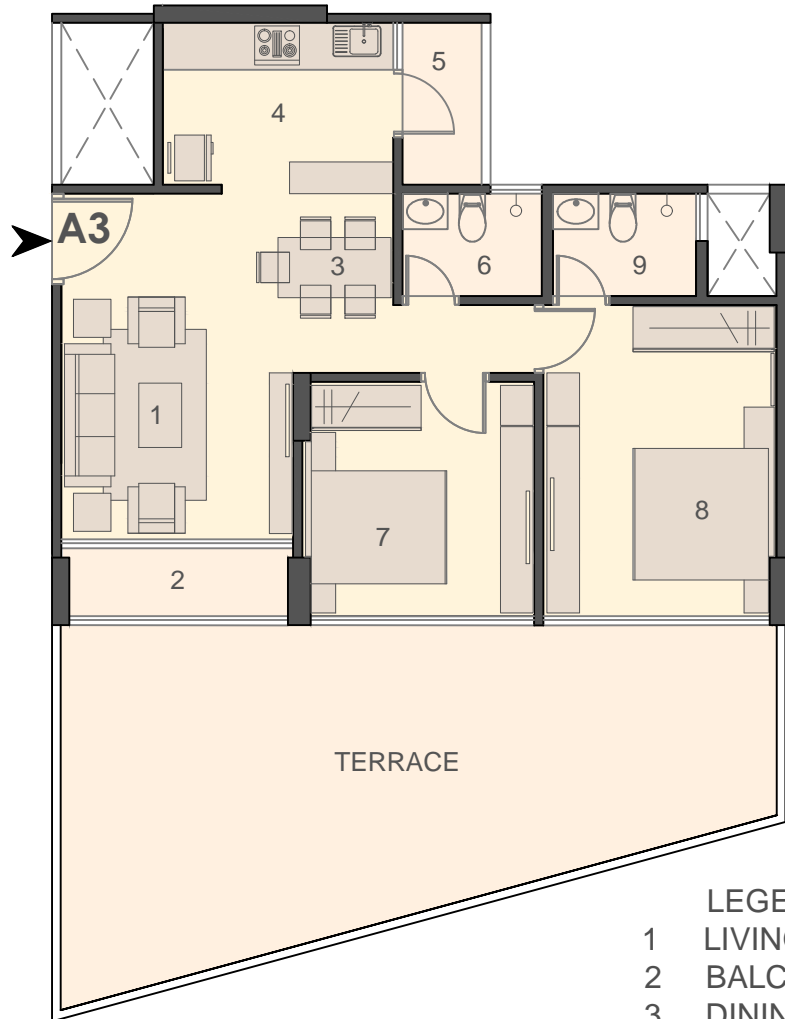
We believe not just in tradition, but innovation that complements our timeless structures applauded by the industry. Our core values of business ethics, customer focus and total quality has brought us a wonderful decade ahead making us everyone's favourite. Our landmark creations have won us not just accolades but bestowed us with a number of GIHED Awards. We have been even entitled with ISO 14001:2004 certification for environmental management and ISO 9001:2008 certification for management processes.

Venus has been unlocking the door to splendid real estate creations with some of the finest Lifespaces. Lifespaces that you will love to be in!!!

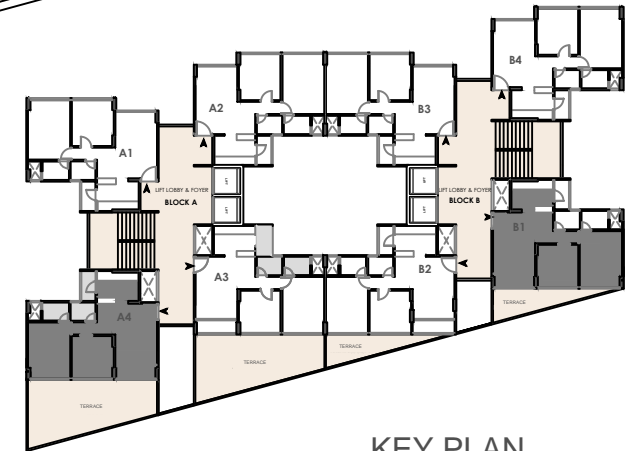




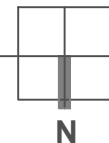
**SECOND FLOOR PLAN**



- LEGEND:**
- 1 LIVING AREA - 10'-1"x14'-8"
  - 2 BALCONY - 10'-0" x 3'-0"
  - 3 DINING AREA - 7'-6"x7'-5"
  - 4 KITCHEN - 10'-0"x7'-2"
  - 5 UTILITY - 3'-6"x7'-2"
  - 6 COMMON TOILET - 6'-1"x4'-6"
  - 7 BEDROOM - 10'-1"x10'-2"
  - 8 MASTER BEDROOM - 10'-2"x13'-7"
  - 9 ATTACHED TOILET - 6'-5"x4'-6"

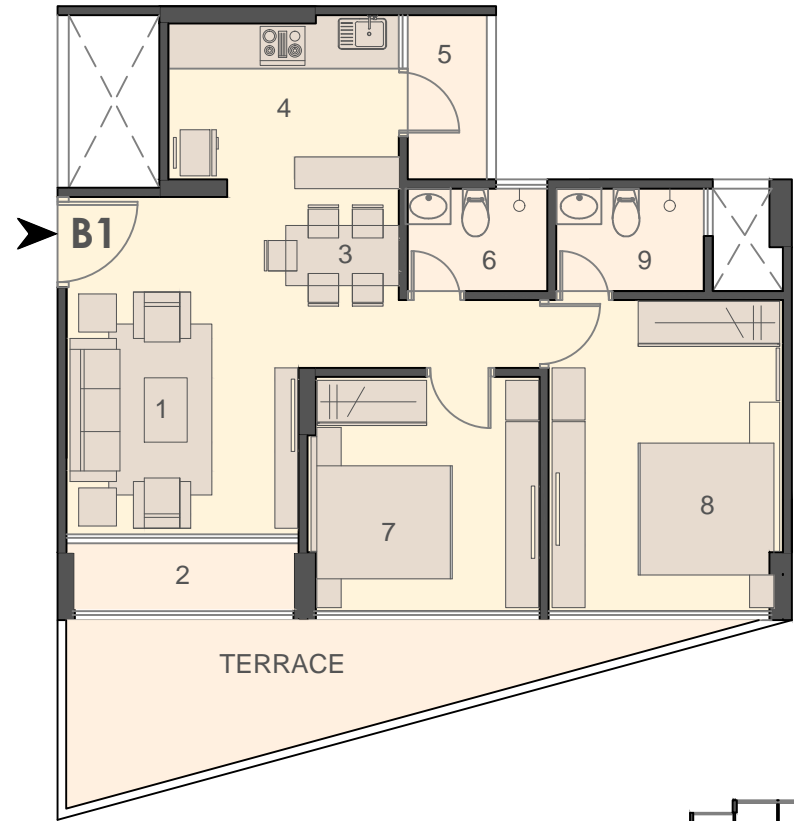
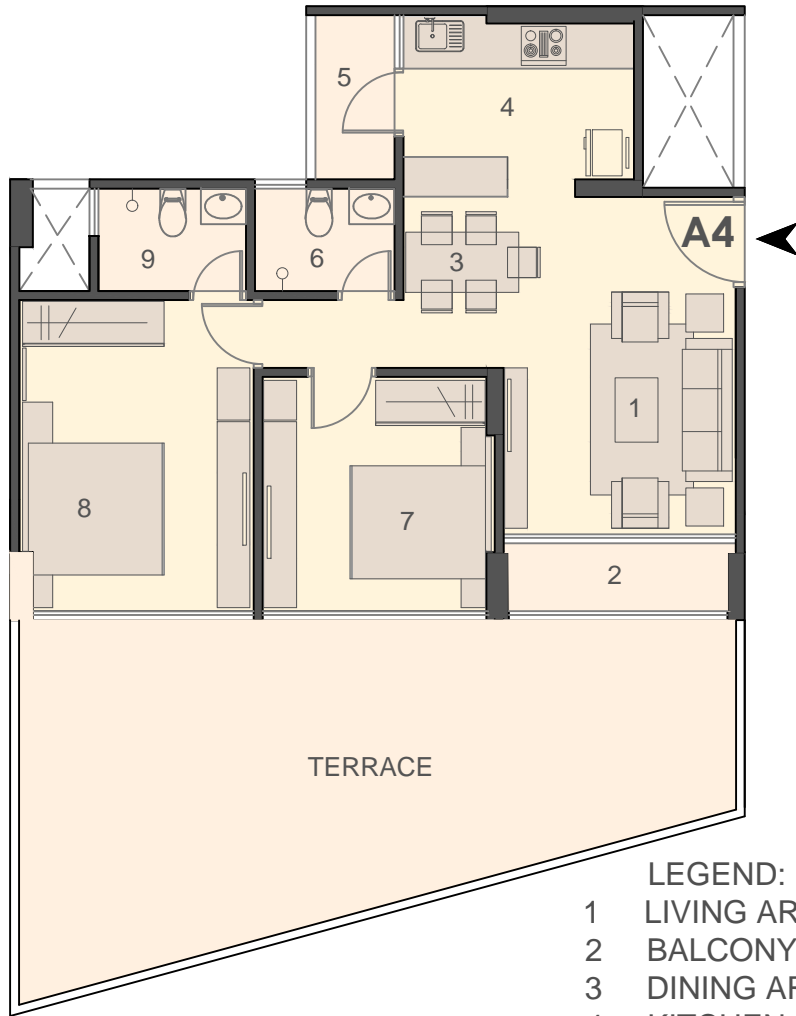


KEY PLAN



## UNIT DETAILS-A3 & B2 TYPE

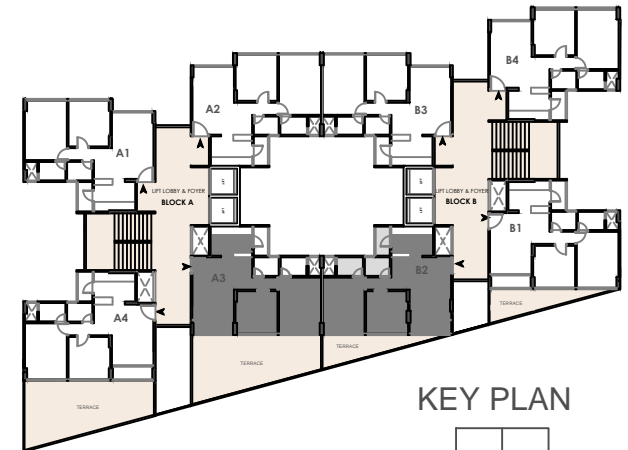
SECOND FLOOR



- LEGEND:**
- 1 LIVING AREA - 10'-1"x14'-8"
  - 2 BALCONY - 10'-0" x 3'-0"
  - 3 DINING AREA - 7'-6"x7'-5"
  - 4 KITCHEN - 10'-0"x7'-2"
  - 5 UTILITY - 3'-6"x7'-2"
  - 6 COMMON TOILET - 6'-1"x4'-6"
  - 7 BEDROOM - 10'-1"x10'-2"
  - 8 MASTER BEDROOM - 10'-2"x13'-7"
  - 9 ATTACHED TOILET - 6'-5"x4'-6"

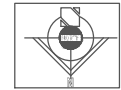
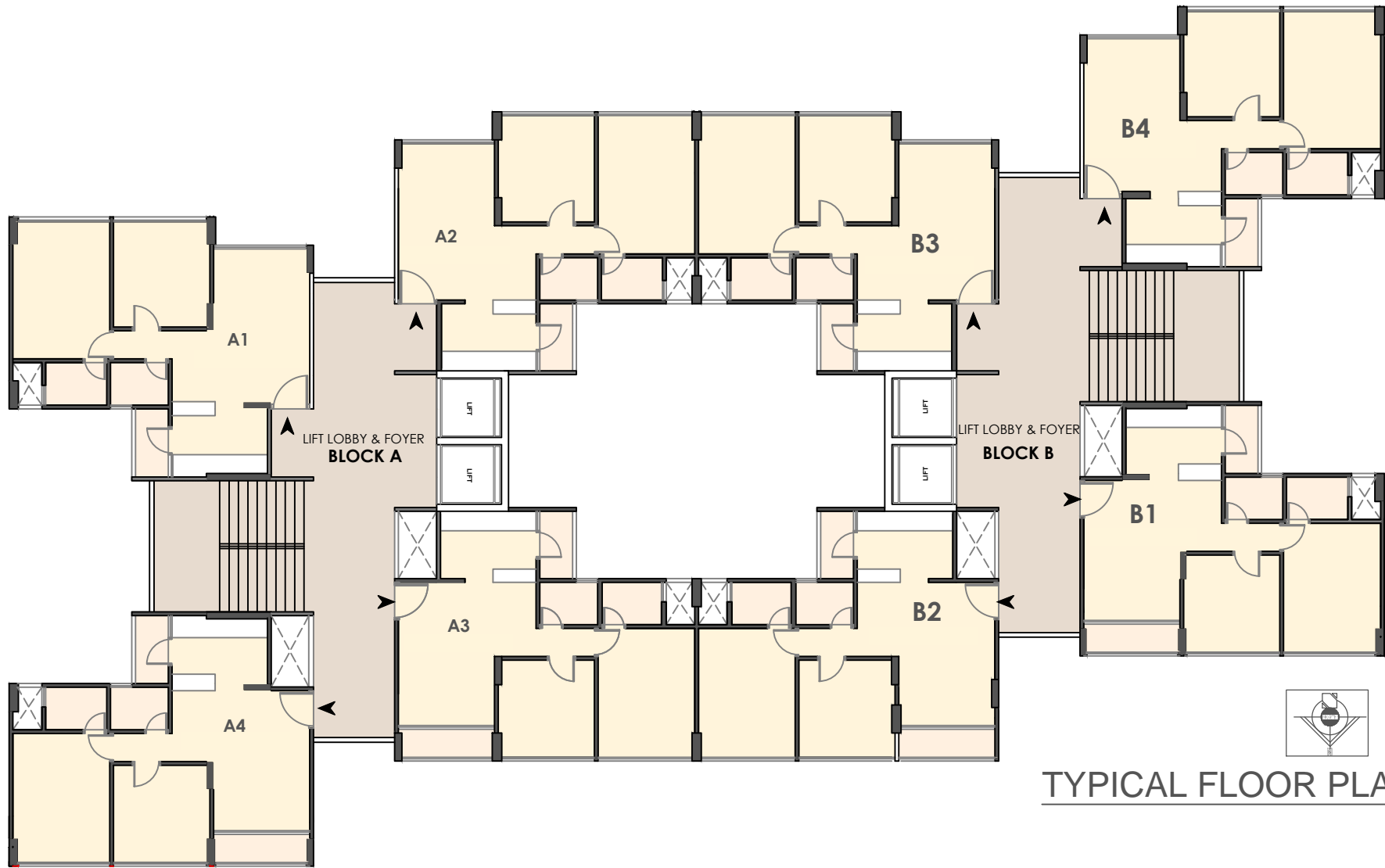
## UNIT DETAILS-A4 & B1 TYPE

SECOND FLOOR

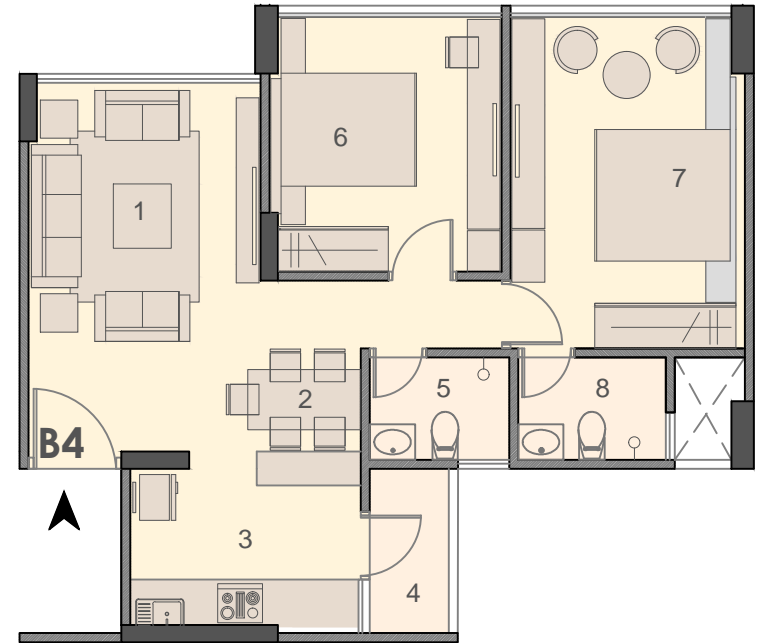
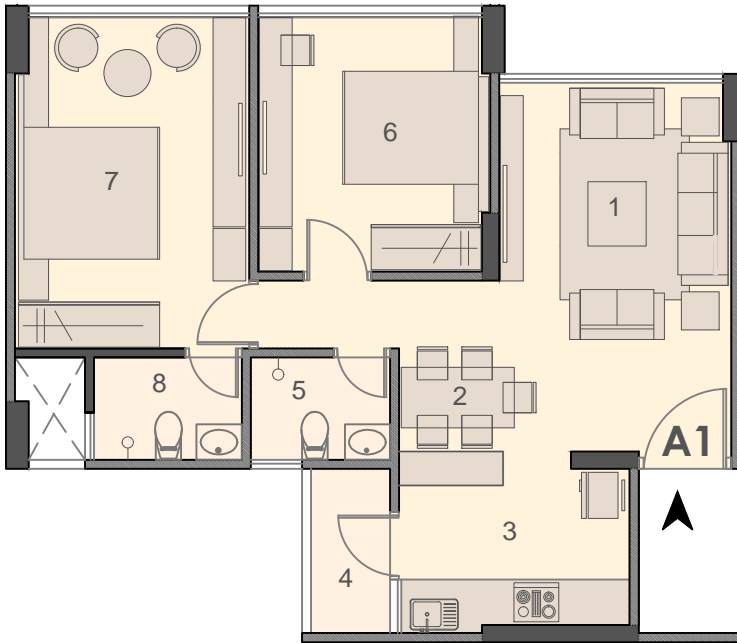


KEY PLAN



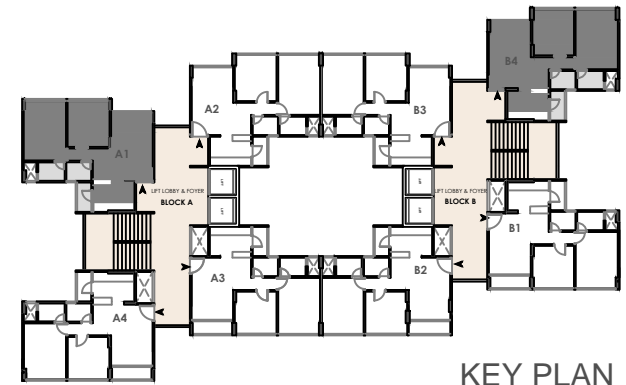


TYPICAL FLOOR PLAN



**LEGEND:**

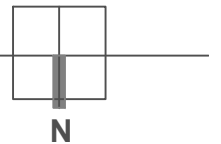
- 1 LIVING AREA - 10'-1"x16'-1"
- 2 DINING AREA - 7'-6"x7'-5"
- 3 KITCHEN - 10'-0"x7'-2"
- 4 UTILITY - 3'-6"x7'-2"
- 5 COMMON TOILET - 6'-1"x4'-6"
- 6 BEDROOM - 10'-1"x11'-1"
- 7 MASTER BEDROOM - 10'-2"x14'-5"
- 8 ATTACHED TOILET - 6'-5"x4'-6"



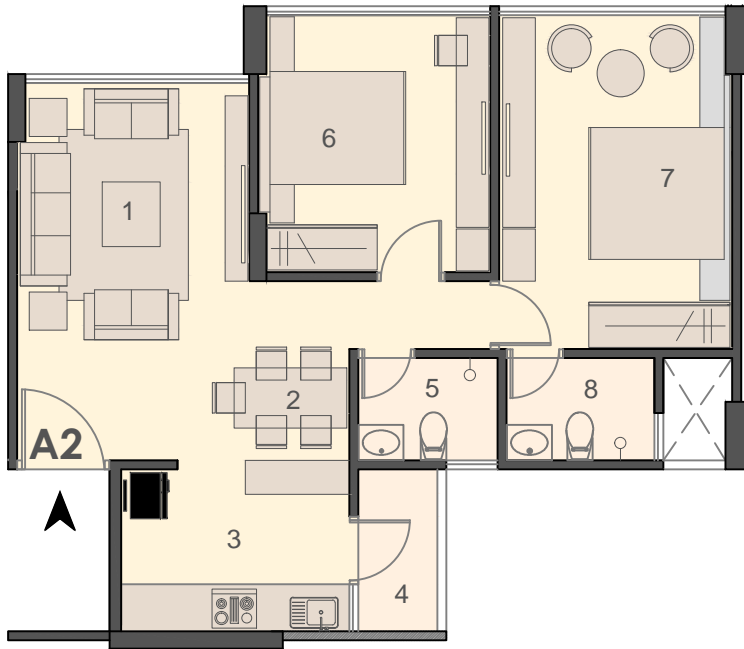
KEY PLAN

**UNIT DETAILS-A1 & B4 TYPE**

TYPICAL FLOOR (1st to 13th FLOOR)

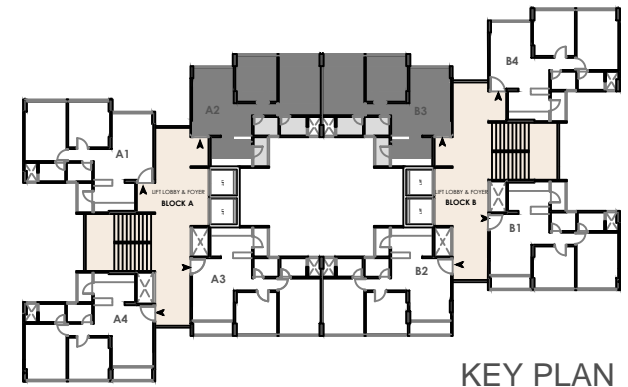






**LEGEND:**

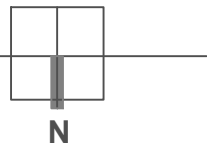
- 1 LIVING AREA - 10'-1"x16'-5"
- 2 DINING AREA - 7'-6"x7'-10"
- 3 KITCHEN - 10'-0"x7'-0"
- 4 UTILITY - 3'-6"x7'-0"
- 5 COMMON TOILET - 6'-1"x4'-6"
- 6 BEDROOM - 10'-1"x11'-1"
- 7 MASTER BEDROOM - 10'-2"x14'-5"
- 8 ATTACHED TOILET - 6'-5"x4'-6"

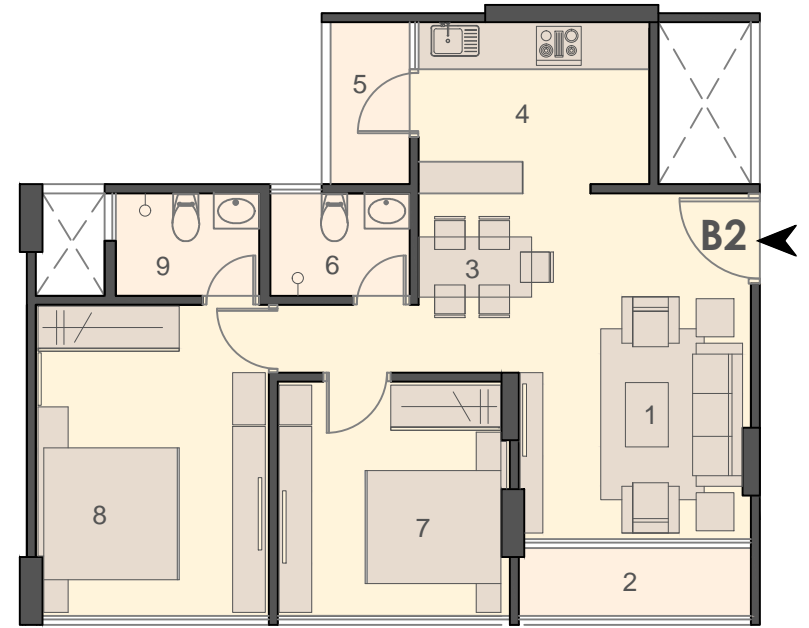
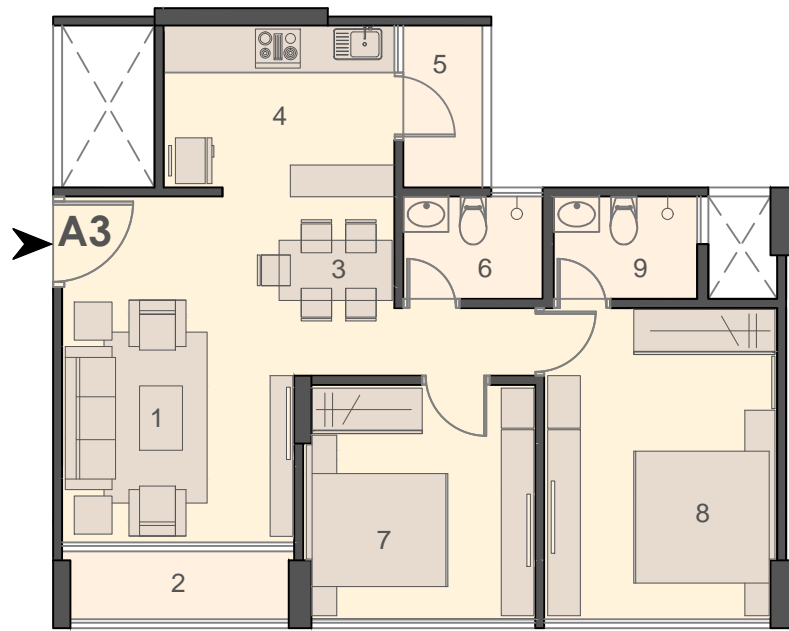


**KEY PLAN**

**UNIT DETAILS-A2 & B3 TYPE**

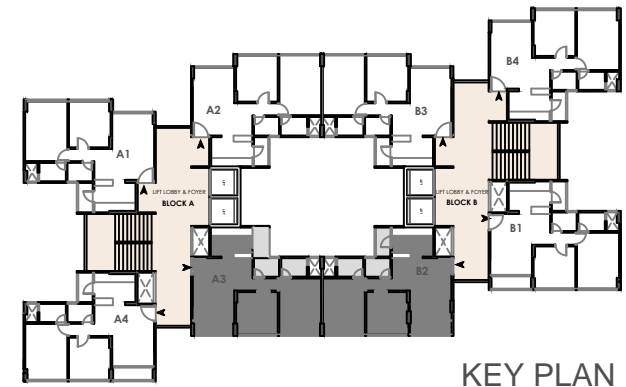
TYPICAL FLOOR (1st to 13th FLOOR)





**LEGEND:**

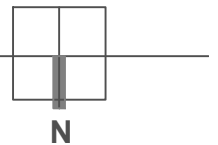
- 1 LIVING AREA - 10'-1"x15'-1"
- 2 BALCONY - 10'-0"x3'-0"
- 3 DINING AREA - 7'-6"x7'-10"
- 4 KITCHEN - 10'-0"x7'-1"
- 5 UTILITY - 3'-6"x7'-0"
- 6 COMMON TOILET - 6'-1"x4'-6"
- 7 BEDROOM - 10'-1"x10'-2"
- 8 MASTER BEDROOM - 10'-2"x13'-7"
- 9 ATTACHED TOILET - 6'-3"x4'-6"

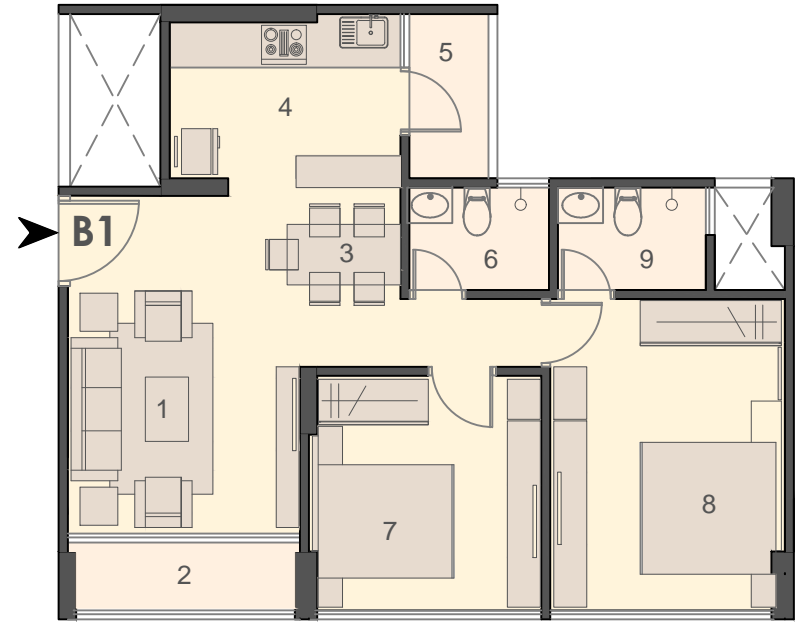
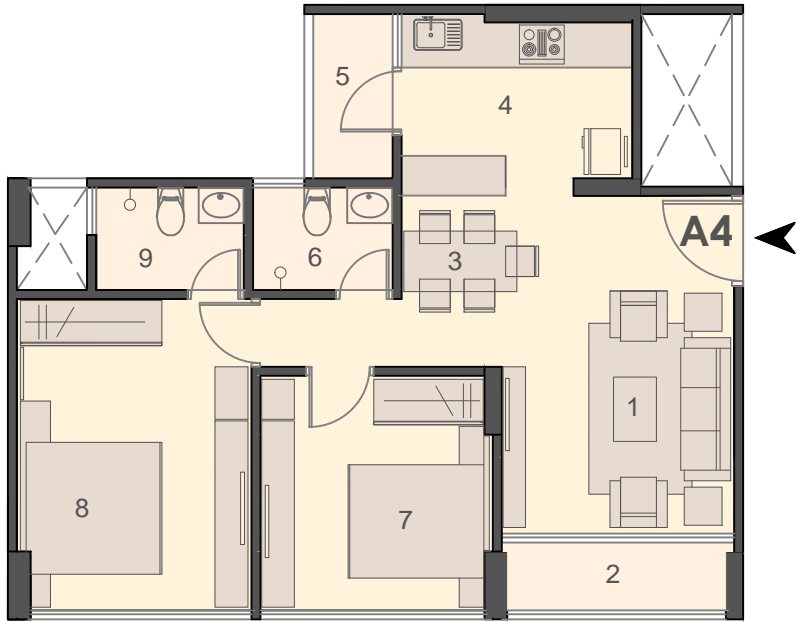


**KEY PLAN**

**UNIT DETAILS-A3 & B2 TYPE**

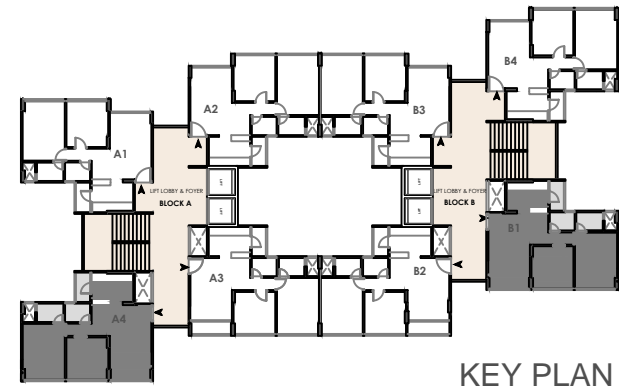
TYPICAL FLOOR (2nd to 13th FLOOR)





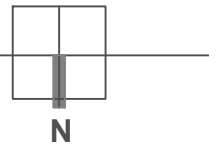
**LEGEND:**

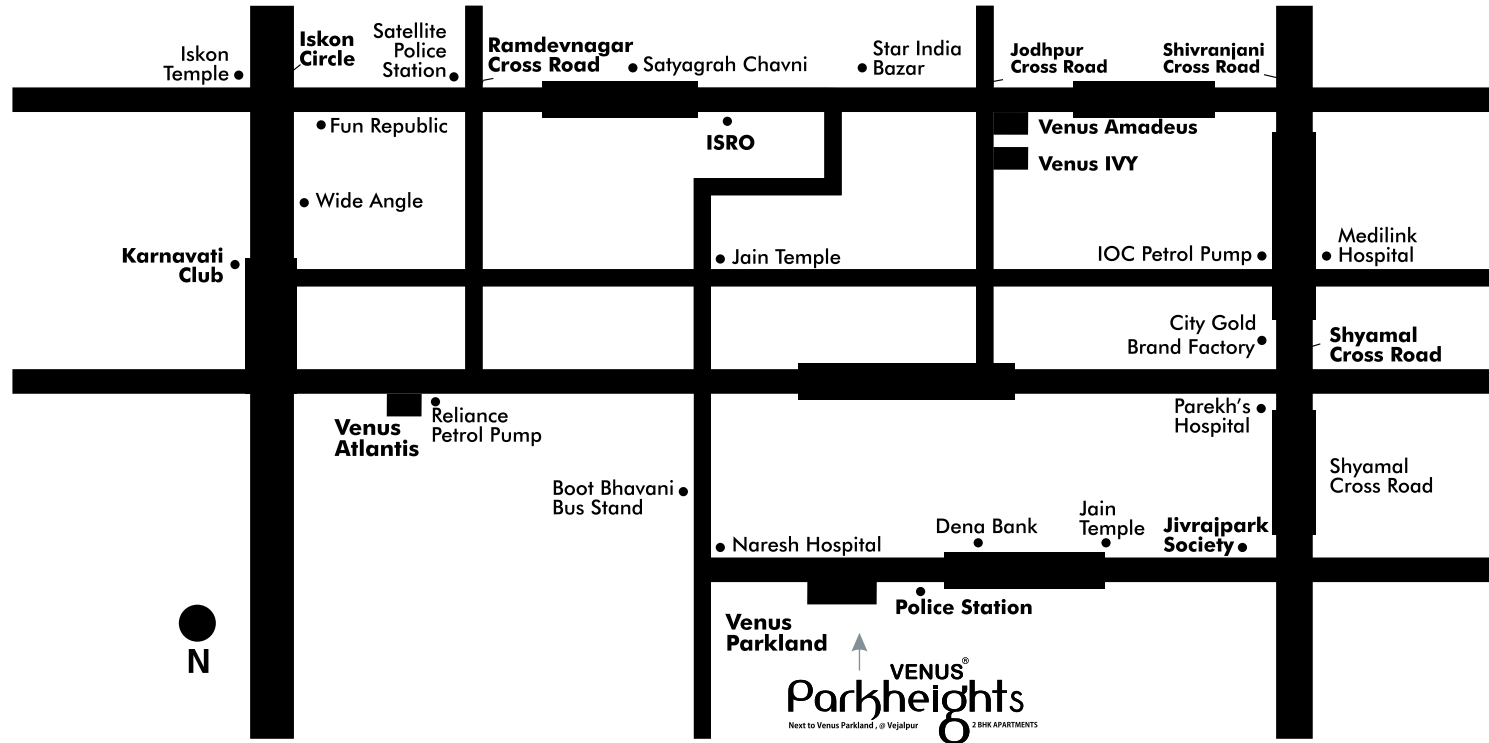
- 1 LIVING AREA - 10'-1"x14'-8"
- 2 BALCONY - 10'-0" x 3'-0"
- 3 DINING AREA - 7'-6"x7'-5"
- 4 KITCHEN - 10'-0"x7'-2"
- 5 UTILITY - 3'-6"x7'-2"
- 6 COMMON TOILET - 6'-1"x4'-6"
- 7 BEDROOM - 10'-1"x10'-2"
- 8 MASTER BEDROOM - 10'-2"x13'-7"
- 9 ATTACHED TOILET - 6'-5"x4'-6"



**UNIT DETAILS-A4 & B1 TYPE**

TYPICAL FLOOR (2nd to 13th FLOOR)





**Site Office :**

Venus Parkland, Near Vejalpur Police Choky, Vejalpur Road, Ahmedabad.  
 Sales Inquiries : +91 96876 67757/58  
 e-mail : sales@venusinfrastructure.com

**VENUS GROUP OF COMPANIES**

Homes | Hospitality | Commercial | Retail | Township

**Corporate Office :**

801-802, Broadway Business Centre, Opp. Mayor's Bungalow, Law Garden,  
 Ellisbridge, Ahmedabad - 380 006. Gujarat, India.  
 Ph. : +91 79 2640 6262 / 8686 / 8787 | Fax : +91 79 2640 9595  
 e-mail : info@venusinfrastructure.com | www.venusinfrastructure.com