

LIVE WHERE  
PRIDE AND COMFORT  
IS THE WAY OF LIFE

A PROJECT BY



Email: [info@siddhivinayakhomes.co.in](mailto:info@siddhivinayakhomes.co.in)  
Contact: 96999 00300

Site Address: Survey No. 30/0, Village - Koynavele (Ghotcamp), Talaja, Navi Mumbai.  
Corporate Address: 102, Lakhani's Landmark, Plot No. 19, Matheran Road,  
New Panvel (E) - 410 206.

MARKETED BY:



[www.siddhivinayakhomes.co.in](http://www.siddhivinayakhomes.co.in)

**Disclaimer:** The information contained in this brochure is intended solely to provide general information for discussion purpose to the prospective buyer and will not constitute or form part of any agreement or form the basis of any contract no warranty, neither representation nor covenant is given or implied as to the accuracy of the whole or any part of this information. All plans, drawings, amenities, facilities, etc. are subject to the approval of the respective authorities and would be changed, if necessary. The discretion remains with the developer.

IN JOINT VENTURE WITH



[www.kanungogroup.net](http://www.kanungogroup.net)  
Email: [kanungogroup@yahoo.com](mailto:kanungogroup@yahoo.com)

Sales Office:

Shop No. 28-31, Payal Complex, Sector 17,  
Opp. Panvel Railway Station, New Panvel (E).

Contact: 93222 56777



GARIMA

TALOJA, NAVI MUMBAI

LIFESTYLE LIVING. AFFORDABLE HOUSING.



LIVE WHERE LIFESTYLE IS  
MARRIED TO PERFECTION.

Artist's Impression

Life is beautiful in every means, so live it where nature keeps you close to its blessings and closer to self. Siddhivinayak Garima, located in the serene and peaceful environment of Taloja is a beautiful destination that surrounds your life with scenic views and affordable luxury. From being designed to live life to the fullest to being planned around conveniences, Siddhivinayak Garima strikes the perfect balance between construction and perfection to provide luxury within your budget.

### PROJECT HIGHLIGHTS

- 7 Residential Buildings of G + 4 Storey in Phase - I
- Luxurious & Affordable  
1 BHK & 2 BHK Residences
- Located in Serene and Natural Ecosystem
- Wide Internal Roads with Street Lights
- Earthquake Resistant R.C.C. Design
- 24-Hour security with CCTV Surveillance System and Intercom Facility
- Shuttle Bus Service
- Centralized RO Plant
- Good Quality Lifts



LIVE WHERE LIFE  
WELCOMES YOU EVERYDAY.

Artist's Impression

LIVE WHERE EVERYDAY  
COMES WITH  
INFINITE EXPERIENCES.



Everyone desires a good relaxing time. A time where the mind is free and soul is at peace. Siddhivinayak Garima gives you a relaxing break from the clutter of city in the tranquillity of infinite experiences. It is a place that will let your body relax in serene landscape, help build endurance through an early morning jog and give your elders and younger ones time for themselves at Senior Citizen's Corner and Children's Play Area.

### RECREATION FEATURES

- Landscaped Garden with Children's Play Area
- Badminton Court
- State-of-the-art Clubhouse & Gymnasium
- Amphitheatre
- Temple
- Gazebo and Senior Citizen Seating Area
- Jogging Track
- Society Office



## LIVE WHERE A OPULENT LIFE COMPLIMENT CONVENIENCES.

Away from the hustle and bustle, yet not too far from the nature's blessings. Siddhivinayak Garima, Taloja is strategically situated at a walk of just 5 mins. from the upcoming Pendhar Metro Station, which makes arriving here very easy and convenient. Siddhivinayak Garima also offers easy accessibility to major conveniences & facilities, including shopping, retail avenues, entertainment hubs, multiplexes, rail and road transportation.

A PROJECT BY



IN JOINT VENTURE WITH



5 MINUTES WALK TO UPCOMING PENDHAR METRO STATION

### LOCATION ADVANTAGES

- 5 minutes walk to Pendhar Metro Station providing Easy Connectivity to CBD-Belapur
- 10 minutes Drive to Central Park & Golf Course, Kharghar
- 15 minutes from Proposed Navi Mumbai International Airport (NMIA)
- 15 minutes drive to Malls, Theatres & other Major Conveniences
- 7 Kms from Mumbai-Pune Expressway
- 10 minutes Drive from Existing Taloja Railway Station
- 5 minutes drive from Panvel-Shilphata Highway



15 MINUTES DRIVE TO MALLS, THEATRES & OTHER MAJOR CONVENIENCES



10 MINS. DRIVE TO CENTRAL PARK, KHARGHAR

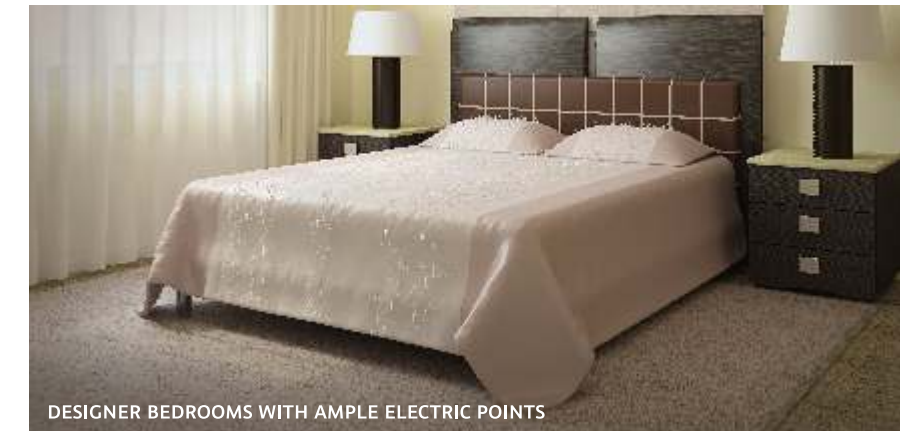


5 MINS. DRIVE FROM PANVEL-SHILPHATA HIGHWAY

LIVE WHERE  
BUDGET LUXURY BLESSES  
MODERN LIVING.

SPACIOUS LIVING ROOMS

Spend your perfect days in perfect spaces; After all, when you spend your time with family and friends, you make memories for a lifetime. The living spaces at Siddhivinayak Garima are meticulously planned and designed to fascinate your senses. This is where you will live and enjoy every day of your life.



DESIGNER BEDROOMS WITH AMPLE ELECTRIC POINTS



GRANITE KITCHEN PLATFORM

DESIGNER BATHROOMS WITH W.C.

## INTERNAL SPECIFICATIONS

**Bedrooms:** Designer Bedrooms with Ample Electric Points

**Kitchen:** Designer tiles in Kitchen above Platform | Granite Kitchen Platform with S.S. sink

**Flooring:** All rooms with Latest Range of Designer Vitrified Flooring

**Doors:** Decorative Laminated Main Entrance Door with Good Quality Door Fittings

**Windows:** Anodized Aluminium Sliding Windows

**Wiring:** Concealed Copper Wiring with Adequate Electric Points & Good Quality ISI Marked Modular Switches | Points for TV, Cable & Telephone

**Bathrooms/Toilets:** Designer Glazed Tiles in Bathroom & W.C. | Branded Sanitary Ware | Branded Bathroom Fittings

**Paint:** Waterproof Paint on External Walls | Plastic Emulsion Paint on Internal Walls Finished with POP/Gypsum Plaster



LIVE WHERE LIFE IS A LYRICAL  
COMPOSITION OF TWO WORDS  
'BECOMING AND BEING'.

Artist's Impression

# LAYOUT PLAN



## LEGENDS

- 01 ENTRY
- 02 TEMPLE
- 03 CHILDREN'S PLAY AREA
- 04 JOGGING TRACK
- 05 BADMINTON COURT
- 06 PERGOLA
- 07 LAWN
- 08 AMPHITHEATRE
- 09 CLUBHOUSE & GYM
- 10 SENIOR CITIZEN AREA



CHILDREN'S PLAY AREA



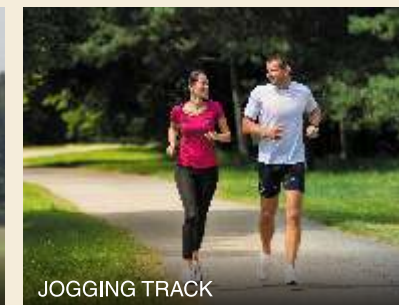
GYMNASIUM



BADMINTON COURT



SENIOR CITIZEN AREA



JOGGING TRACK



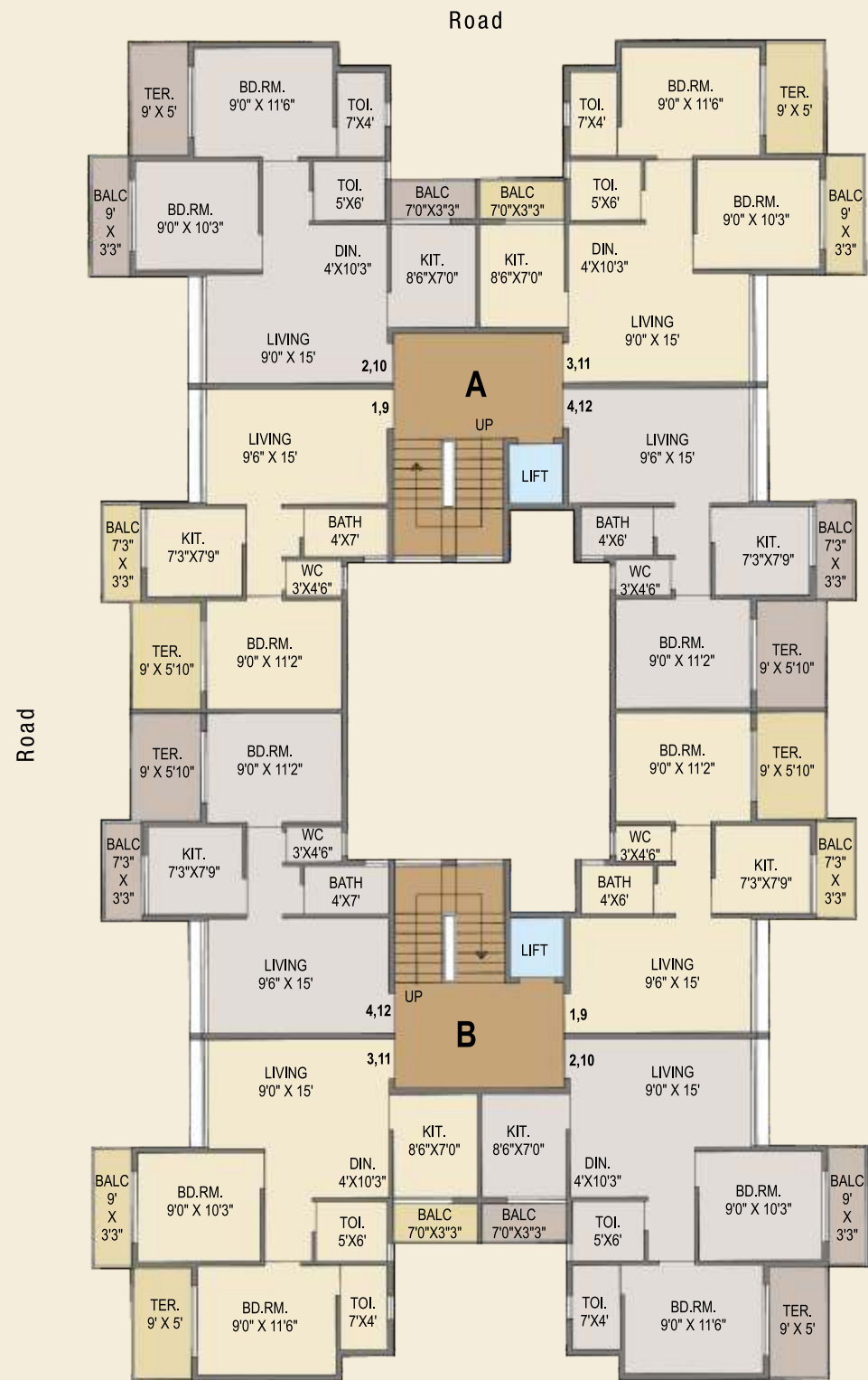
AMPHITHEATRE



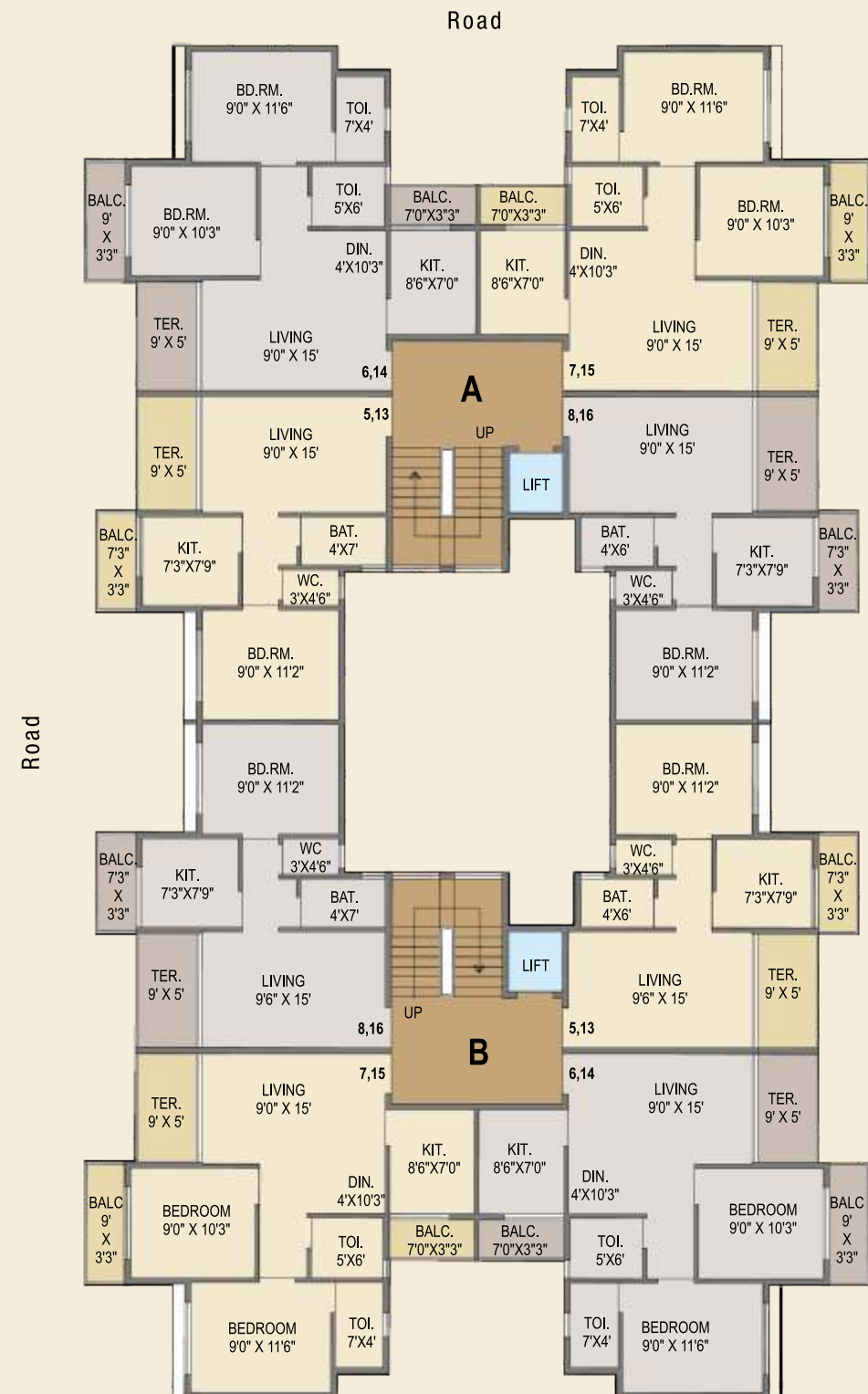


# BUILDING NO. 1

## 1<sup>ST</sup> & 3<sup>RD</sup> FLOOR PLAN



## 2<sup>ND</sup> & 4<sup>TH</sup> FLOOR PLAN

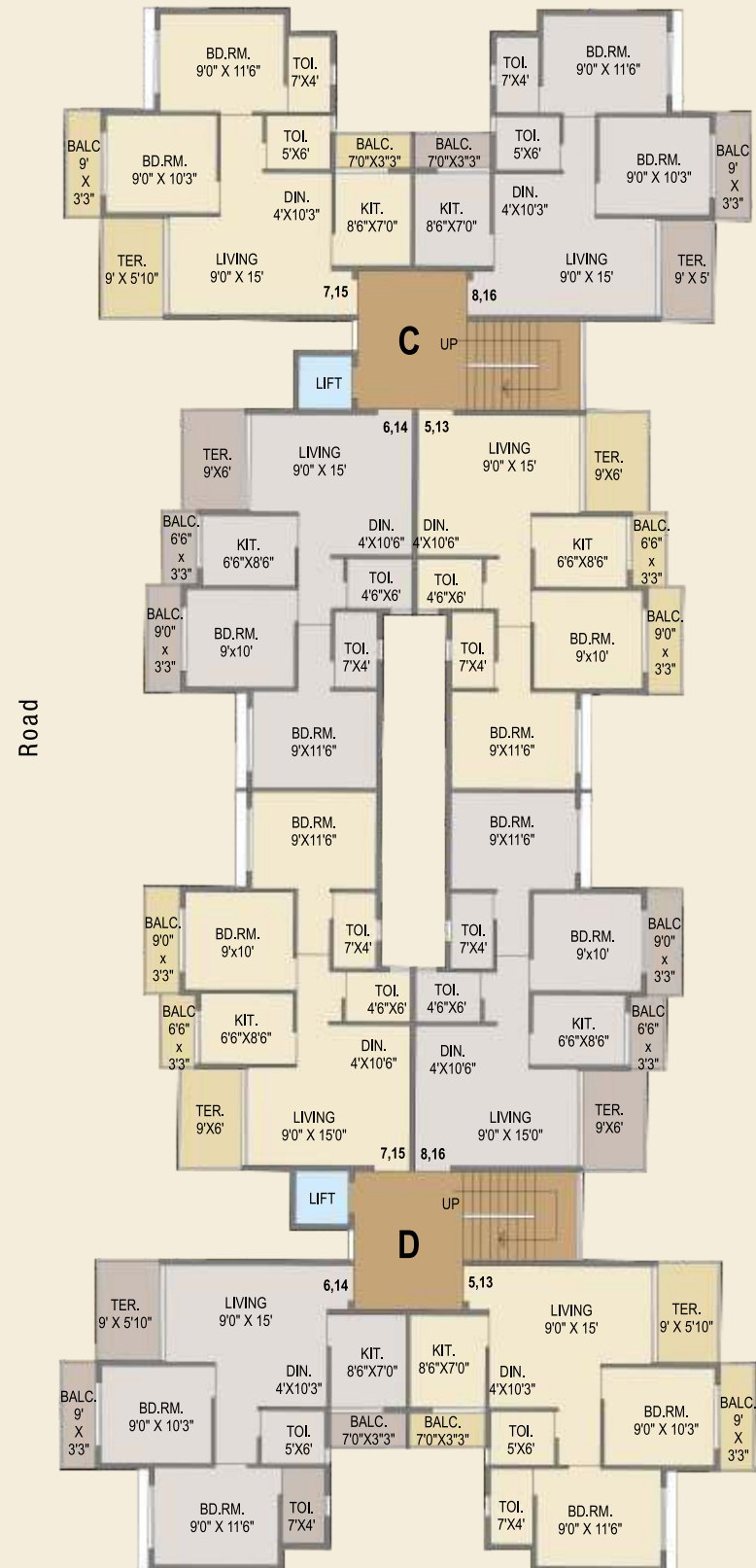


# BUILDING NO. 2

## 1<sup>ST</sup> & 3<sup>RD</sup> FLOOR PLAN



## 2<sup>ND</sup> & 4<sup>TH</sup> FLOOR PLAN



# BUILDING NO. 3

## 1<sup>ST</sup> & 3<sup>RD</sup> FLOOR PLAN



## 2<sup>ND</sup> & 4<sup>TH</sup> FLOOR PLAN



# BUILDING NO. 4

## 1<sup>ST</sup> & 3<sup>RD</sup> FLOOR PLAN

Road



## 2<sup>ND</sup> & 4<sup>TH</sup> FLOOR PLAN

Road

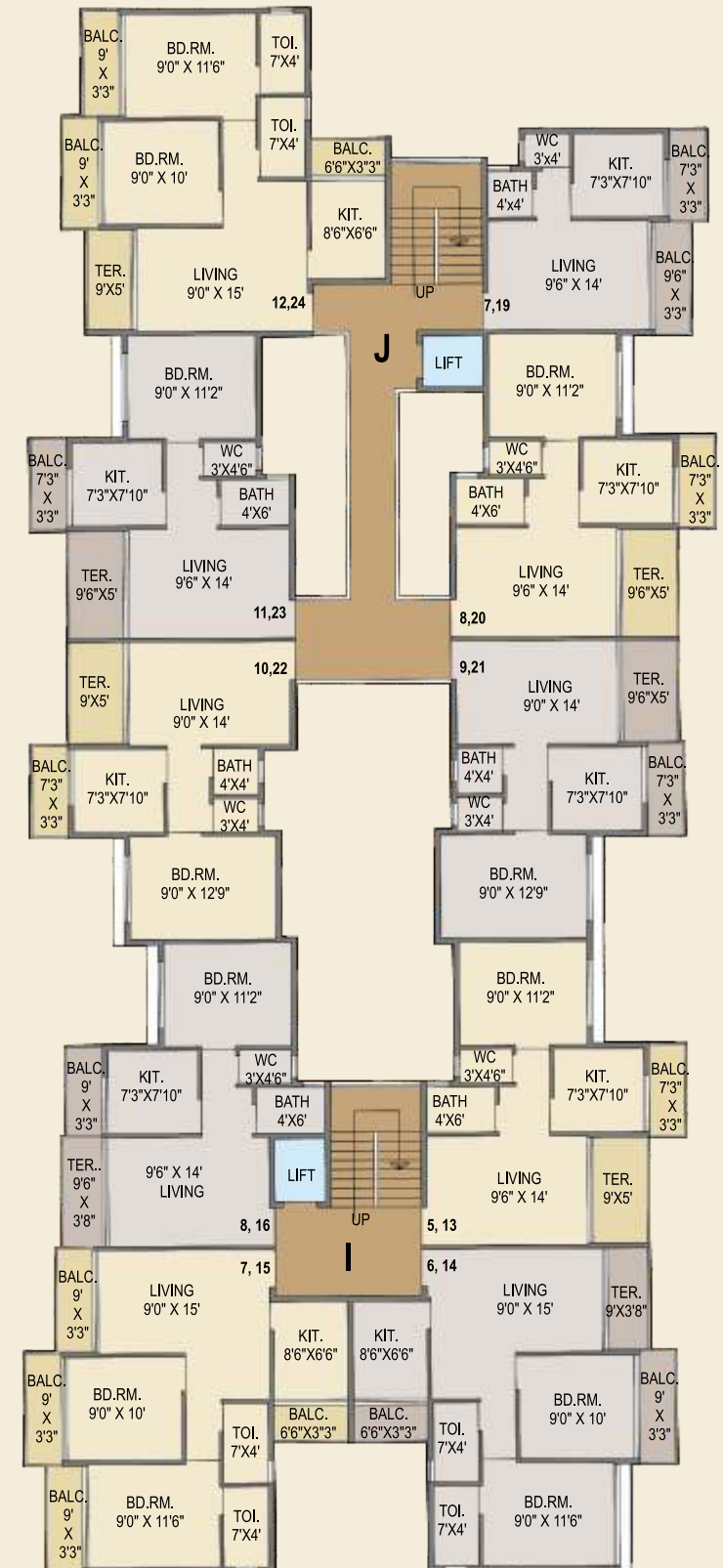


# BUILDING NO. 5

## 1<sup>ST</sup> & 3<sup>RD</sup> FLOOR PLAN

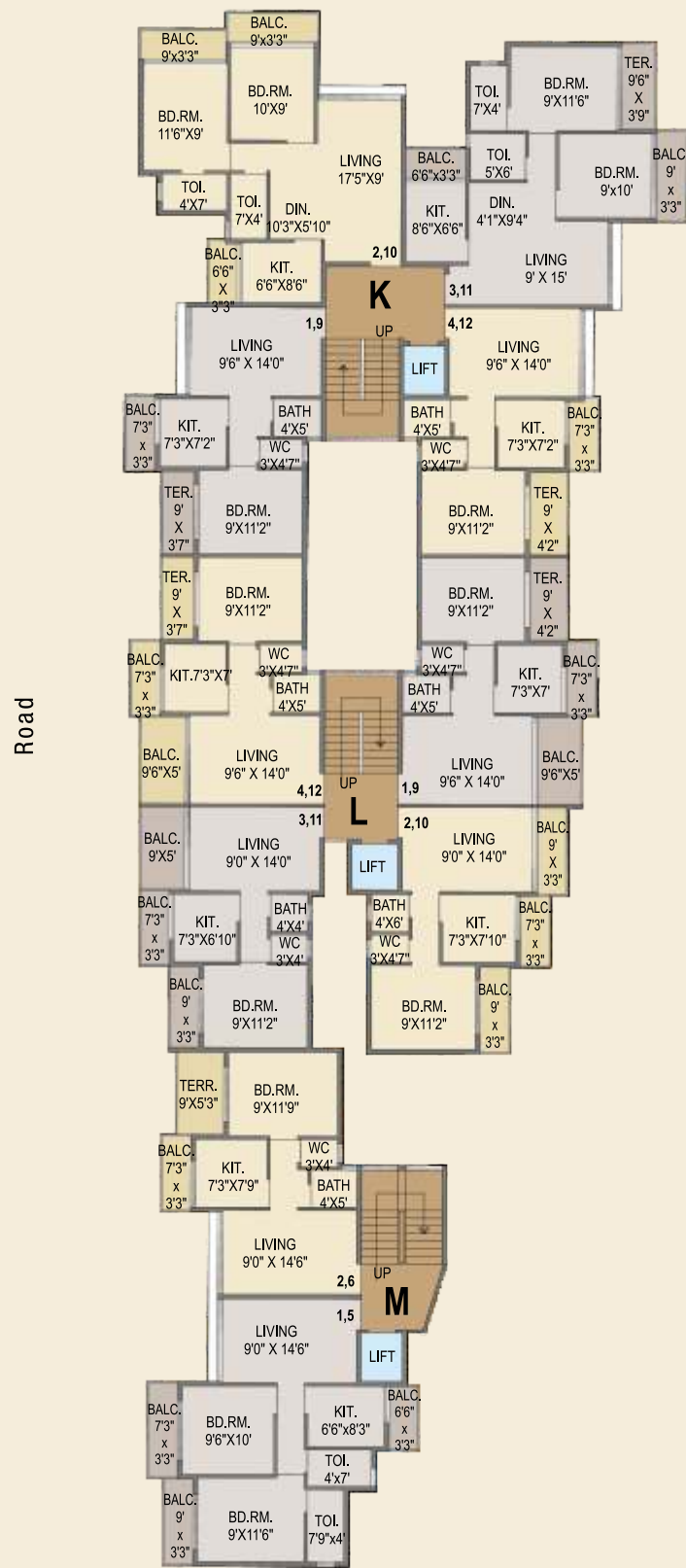


## 2<sup>ND</sup> & 4<sup>TH</sup> FLOOR PLAN

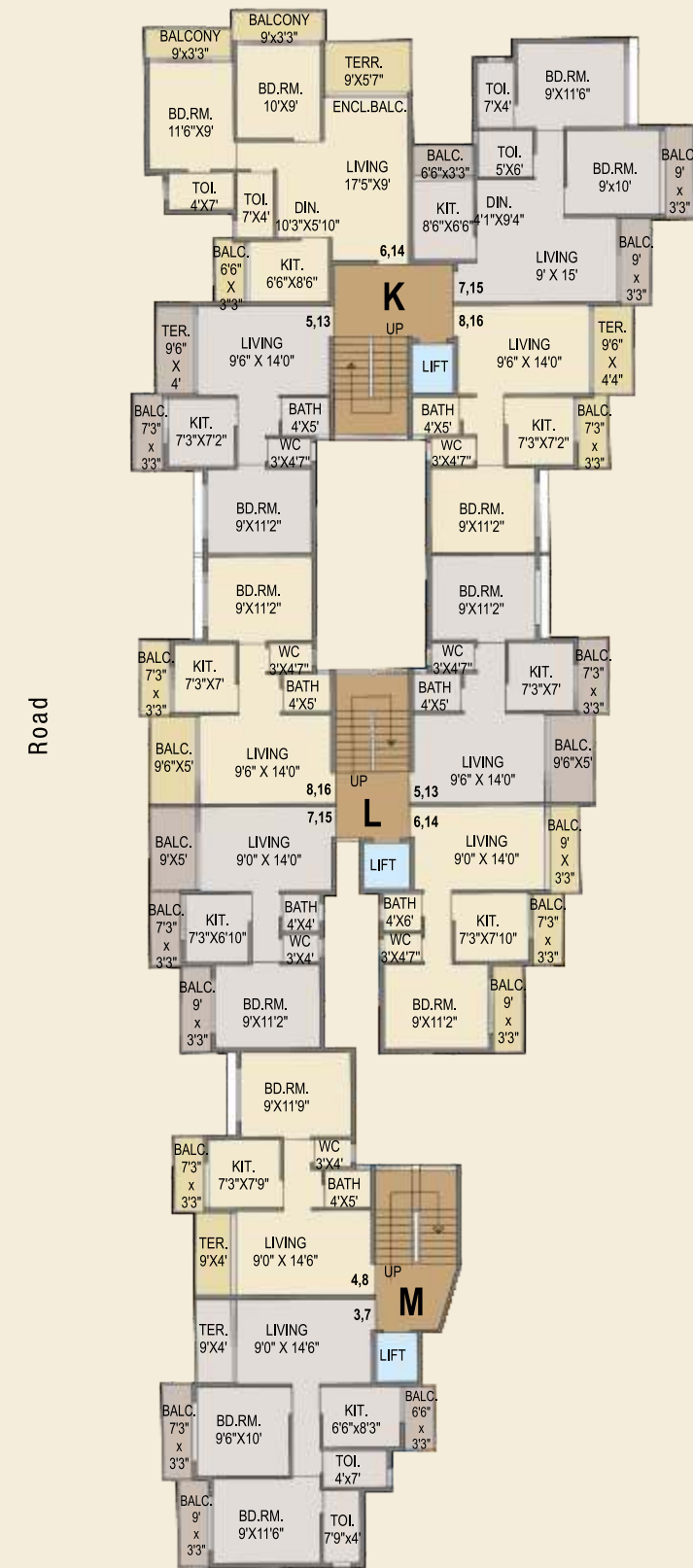


# BUILDING NO. 6

## 1<sup>ST</sup> & 3<sup>RD</sup> FLOOR PLAN

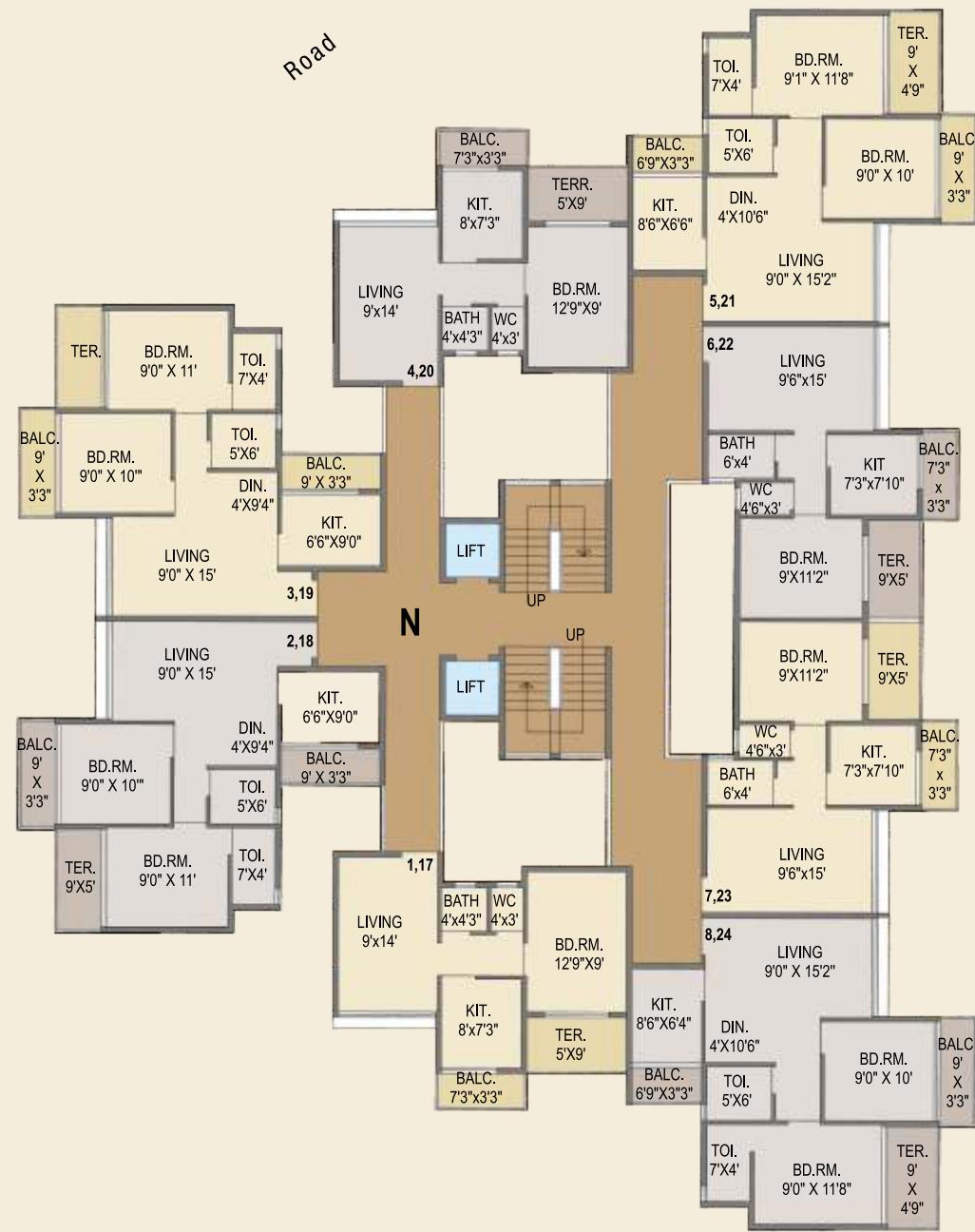


## 2<sup>ND</sup> & 4<sup>TH</sup> FLOOR PLAN

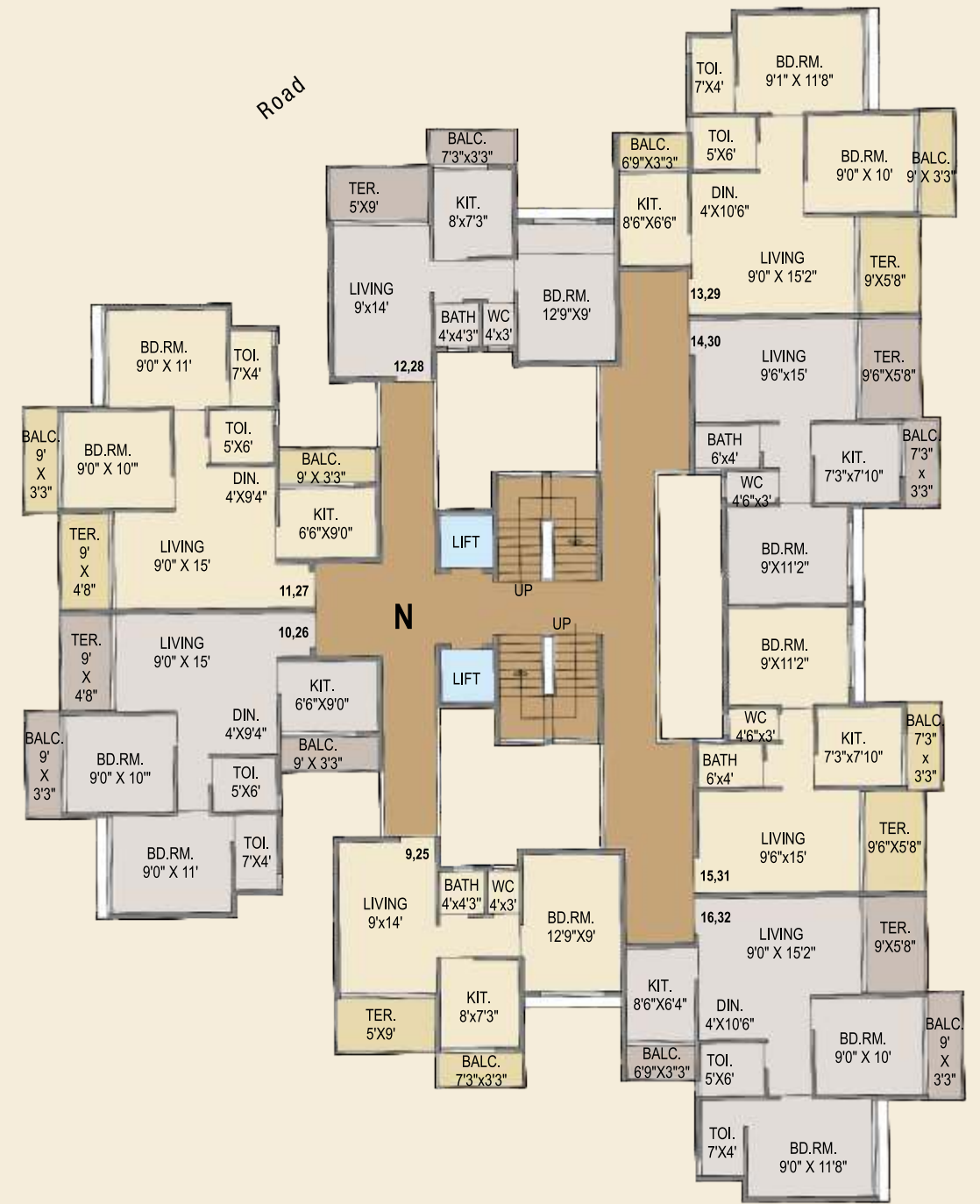


# BUILDING NO. 7

## 1<sup>ST</sup> & 3<sup>RD</sup> FLOOR PLAN



## 2<sup>ND</sup> & 4<sup>TH</sup> FLOOR PLAN



A PROJECT BY



IN JOINT VENTURE WITH



Siddhivinayak Homes is a name to be reckoned with, when it comes to the real estate sector in Navi Mumbai. It is synonymous with efficiency and quality mega projects. What makes Siddhivinayak Homes projects class apart is the technical expertise and the quality assurance that goes into it. The Group has been instrumental in shaping the future of homes in the futuristic city of Navi Mumbai.



Artist's Impression

## SIDDHIVINAYAK GARIMA AT A GLANCE

### PROJECT HIGHLIGHTS

7 Residential Buildings of G + 4 Storey in Phase - I | Luxurious & Affordable  
1 BHK & 2 BHK Residences | Located in Serene and Natural Ecosystem | Wide Internal  
Roads with Street Lights | Earthquake Resistant R.C.C. design | 24-Hour Security with CCTV  
Surveillance System and Intercom Facility | Shuttle Bus Service | Centralized RO Plant  
Good Quality Lifts

### RECREATION FEATURES

- Landscaped Garden with Children's Play Area
- Badminton Court
- State-of-the-art Clubhouse & Gymnasium
- Amphitheatre
- Gazebo and Senior Citizen Seating Area
- Temple
- Jogging Track
- Society Office

### LOCATION ADVANTAGES

- 5 minutes walk to Pendhar Metro Station providing Easy Connectivity to CBD-Belapur
- 10 minutes Drive to Central Park & Golf Course, Kharghar
- 15 minutes from Proposed Navi Mumbai International Airport (NMIA)
- 15 minutes Drive to Malls, Theatres & Other Major Conveniences
- 7 Kms from Mumbai-Pune Expressway
- 10 minutes Drive from Existing Taloja Railway Station
- 5 minutes Drive from Panvel-Shilphata Highway

### INTERNAL SPECIFICATIONS

**Bedrooms:** Designer Bedrooms with Ample Electric Points

**Kitchen:** Designer Tiles in Kitchen above Platform | Granite Kitchen Platform with S.S. Sink

**Flooring:** All Rooms with Latest Range of Designer Vitrified Flooring

**Doors:** Decorative Laminated Main Entrance Door with Good Quality Door Fittings

**Windows:** Anodized Aluminium Sliding Windows

**Wiring:** Concealed Copper Wiring with Adequate Electric Points & Good Quality ISI Marked Modular Switches | Points for TV, Cable & Telephone

**Bathrooms/Toilets:** Designer Glazed Tiles in Bathroom & W.C. | Branded Sanitary Ware | Branded Bathroom Fittings

**Paint:** Waterproof Paint on External Walls  
Plastic Emulsion Paint on Internal Walls  
Finished with POP/Gypsum Plaster