



Just the Perfect Blend of  
space & sophistication

RERA number : P52100003139

[www.kundans.com](http://www.kundans.com)

“Submerge in  
tranquility &  
experience exuberance”

If a sumptuous, out-of-the-box life high on contemporary styles is on your mind then look no further. Owning a grand living at Etemia is what it takes. Striking a perfect work-life balance, living here is a thoroughly convincing affair. Even the socio-cultural equilibrium too, you'd find here with an ease.





### Project Features

- Grand Entrance Gate [P]
- Jogging Track [P]
- Amphitheatre [P]
- Party Lawn [P]
- Club house & Gymnasium [P]
- Swimming pool & Kids pool [P]
- Children's Play area with Sand Pit [P]
- Vehicular Free Podium [P]
- Multi level car parking [P]
- Grand Entrance Lobby with CCTV [P]

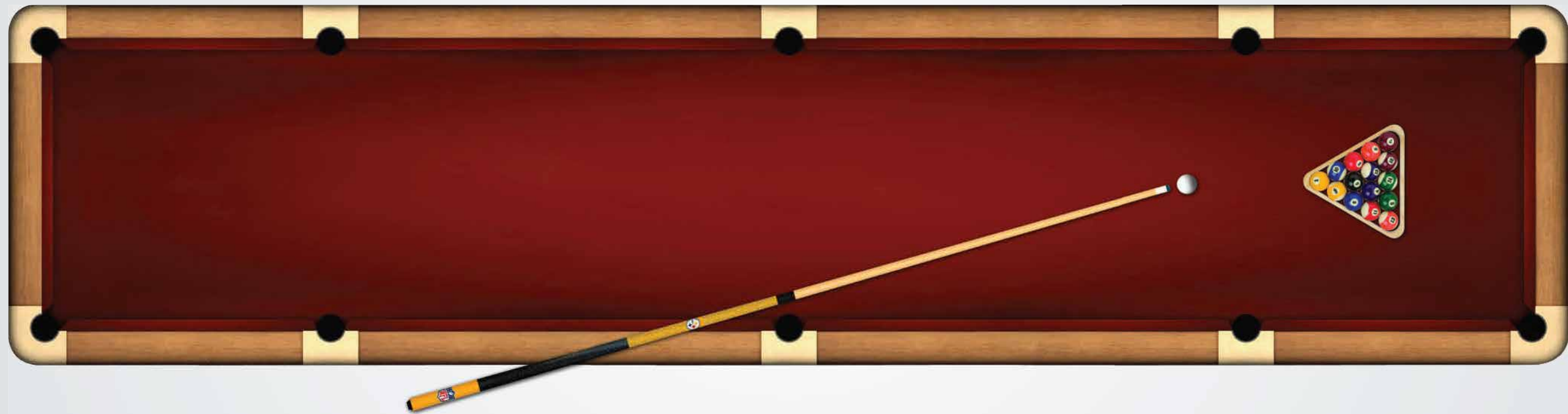
P - Proposed amenities that will be sanctioned in the final plan

The icon of a magnificent living at an ever flourishing locale of Sopan Baug... And what makes Eternia truly matchless is the tallest elevation in the vicinity !

  
eternia  
Finest 2&3 BHK Suites Near Sopanbaug



The **Charisma** of being supreme in every respect !



## The charisma of being supreme in every respect

Space is encouraging. The more you have, the better it feels. Can you ever imagine playing football in a terribly small gully corner? Practicing for swimming relay competition in a narrow pond or going for a long drive crammed in a small car?

At times compromise is just unthinkable. And space is such a feature that it is reflected in your thinking patterns and your persona too. Posh, large workplaces and well-ventilated, spacious homes have become an integral necessity of affluent lifestyles. Space encourages us to think big. See beyond. And enlarge our mind's vision. That's why, the more we have it, the better it feels...

Presenting moooore space. Moooore class. To pamper each mood of yours.

  
**eternia**  
Finest 2&3 BHK Suites Near Sopanbaug



Actual Photograph

# eternia

Finest 2&3 BHK Suites Near Sopanbaug

## FLOORING

- Imported marble in living/dining
- Vitrified flooring in bedrooms and kitchen
- Anti-skid tiles in terrace

## TOILET AND PLUMBING

- Designer premium sanitary & CP fitting;
- Anti-skid flooring for all bathrooms
- Glass Shower enclosures in all bathrooms
- Limited Solar water supply
- Premium tiles in bathrooms upto full height
- Exhaust fans in all toilets

## ELECTRICAL FITTINGS

- Concealed copper wiring with Schneider / Legrand or equivalent modular switches
- Telephone and TV points in all Living/Dining and all bedrooms
- Provision for installation of split A/c units.
- Limited Power Backup

## Contentment 24 x 7

Have you ever tried to define the 'evolved lifestyle' you always have dreamt for yourself? You must have faint ideas of how it should blossom in your new home. But when you visit Eternia, you'd simply proclaim 'this is it!' Every hour of the day, the top-of-the-mind feeling that would inspire you to move up in life is contentment 24 x 7!



Actual Photograph

# eternia

Finest 2&3 BHK Suites Near Sopanbaug

## PAINTING

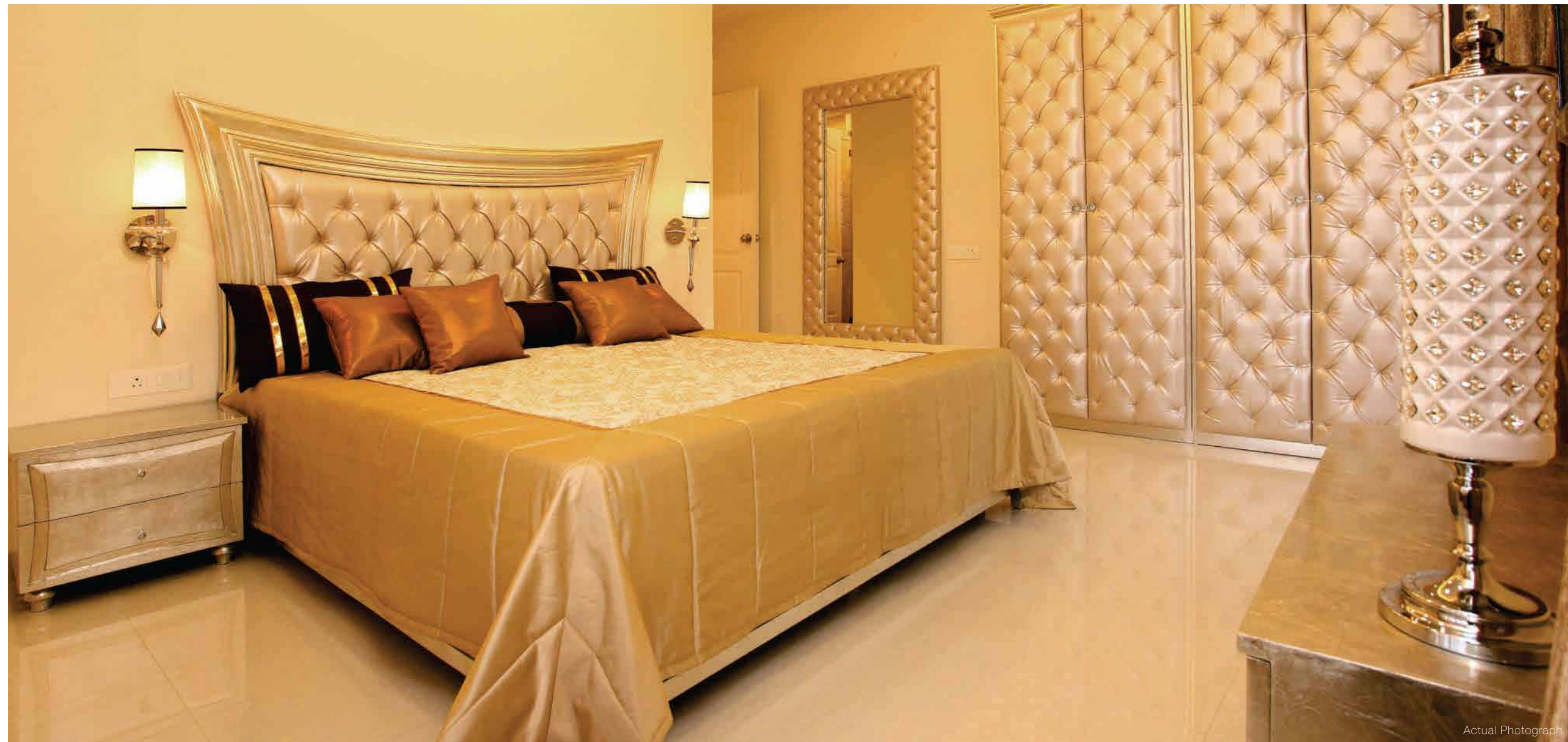
- Internal : POP finished with Luster/Plastic paint
- External : Double coated sand faced plaster with high quality exterior paint

## DOORS

- Designer Wooden main door with veneer finish
- Textured painted internal doors
- 3 track sliding powder coated aluminium doors for terrace with mosquito nets
- Wooden door frames for toilets and bedrooms

## WINDOWS

- 3 track sliding Powder coated windows and mosquito nets for all bedrooms and living/dining
- Marble window sill



Actual Photograph



Actual Photograph

## Course of euphoric experiences to come

Every experience here would be blessed by ecstasy. And an amount of euphoria is gelled with the course of each day, as you move on. With a plentiful of socializing, page 3 sensations, partying to your heart's content, holidaying to the choicest destinations and eventful layouts to your secret picnic spots welcome the course of euphoric experiences.



eternia  
Finest 2&3 BHK Suites Near Sopanbaug

KITCHEN

- Modular Kitchen with hob and chimney
- Piped gas with gas leak detector
- Composite marble platform with S.S. sink and drain board
- Dado tiles upto Lintel level
- Provision for Water Purifier

SECURITY

- Video door phone
- Digital main door lock (Samsung or equivalent )
- Intercom connecting to common areas

DRY BALCONY

- Utility area with provision for washing machine







  
**eternia**  
Finest 2&3 BHK Suites Near Sopanbaug

A creation that truly translates your innermost desires into awe-inspiring reality. And complements the über cool panache you deserve. Eternia, the only paradise where the suites suit your persona.

Podium Garden



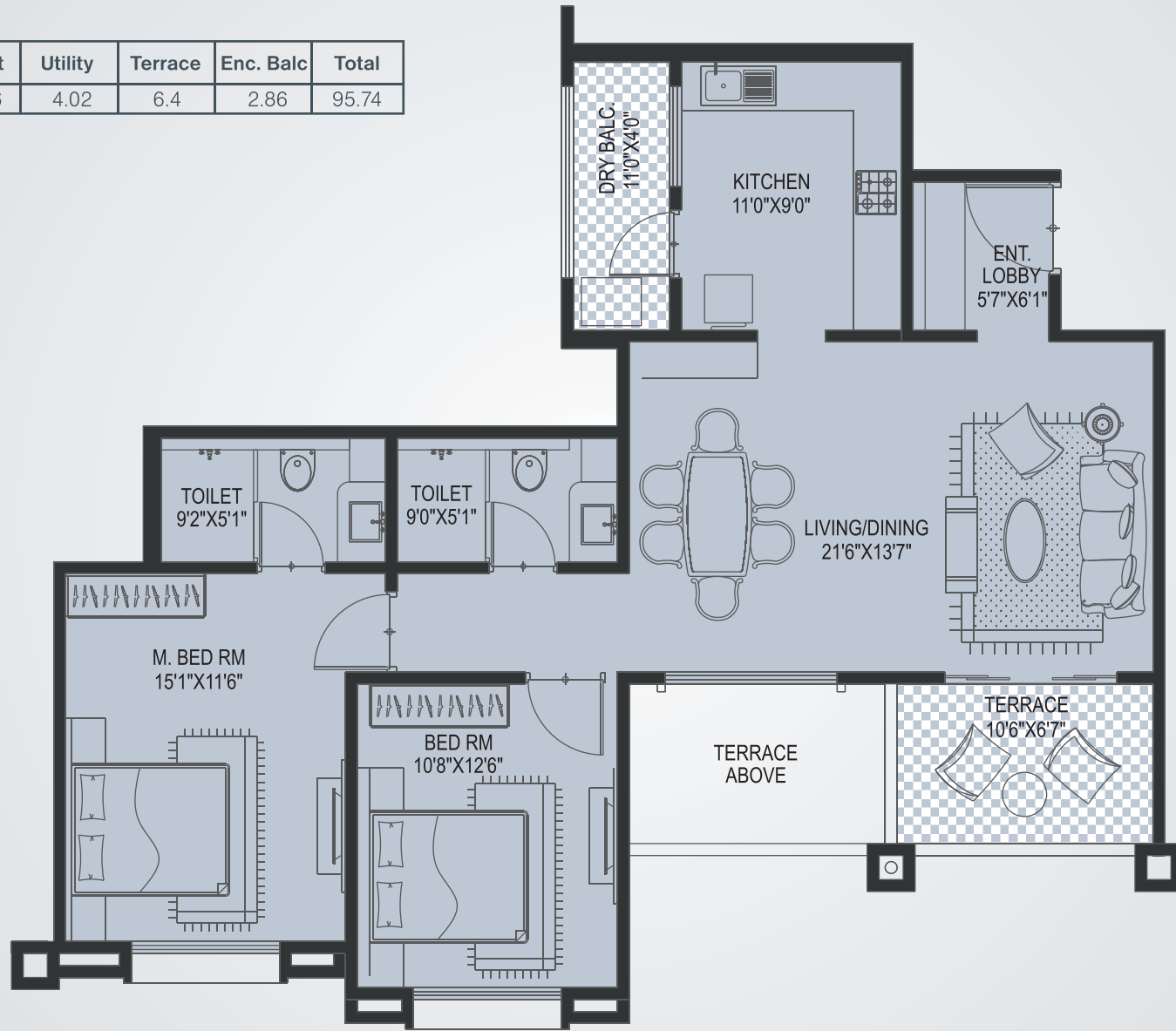
Typical Floor Plan

\*Plan shown with enclosed balcony for which the area is mentioned separately on the area chart



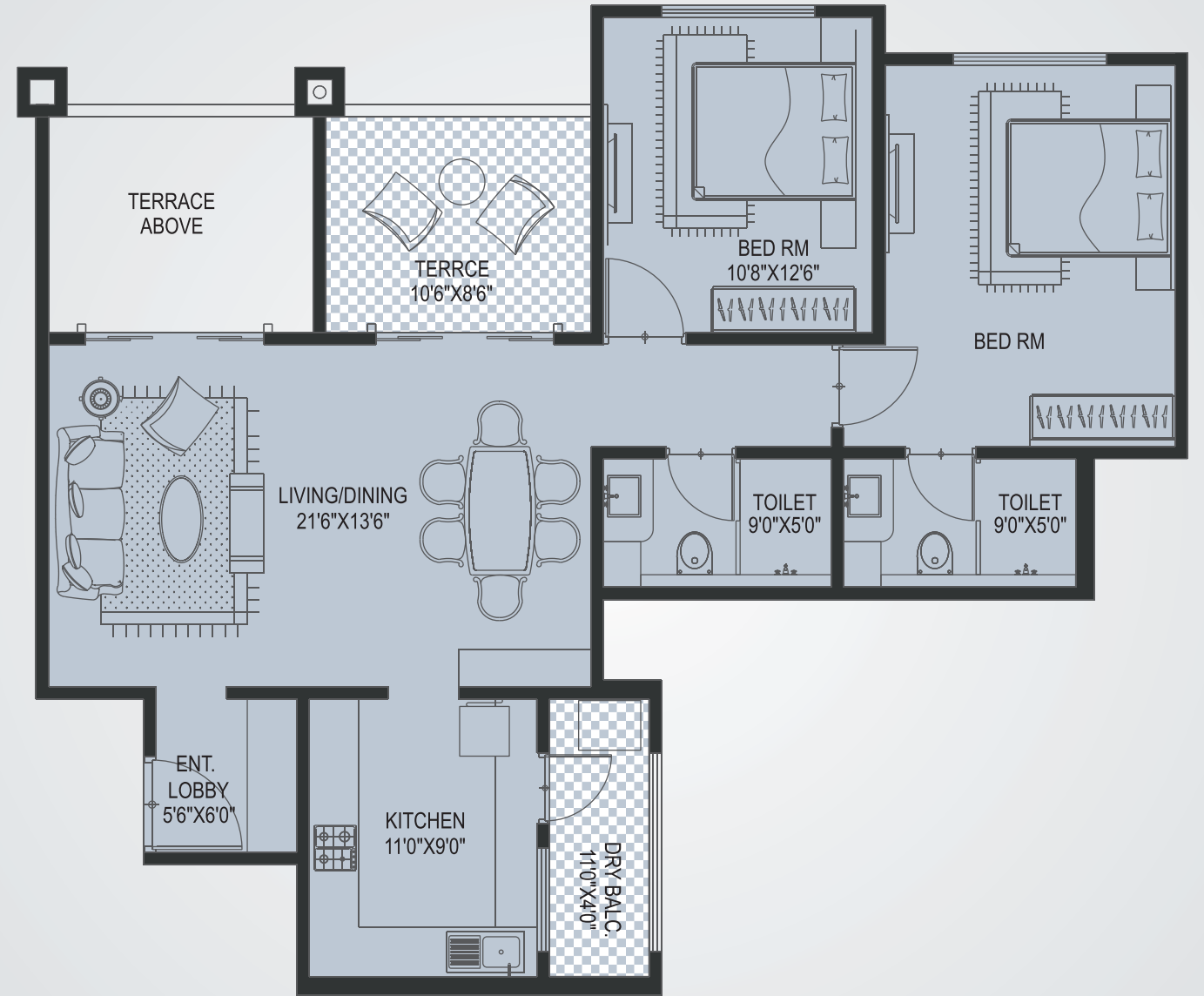
# 2 BHK

Carpet	Utility	Terrace	Enc. Balc	Total
82.46	4.02	6.4	2.86	95.74



\*Plan shown with enclosed balcony for which the area is mentioned separately on the area chart

# 2 BHK



Carpet	Utility	Terrace	Enc. Balc	Total
82.97	4.02	8.32	2.76	98.07

\*Plan shown with enclosed balcony for which the area is mentioned separately on the area chart

# 2 BHK

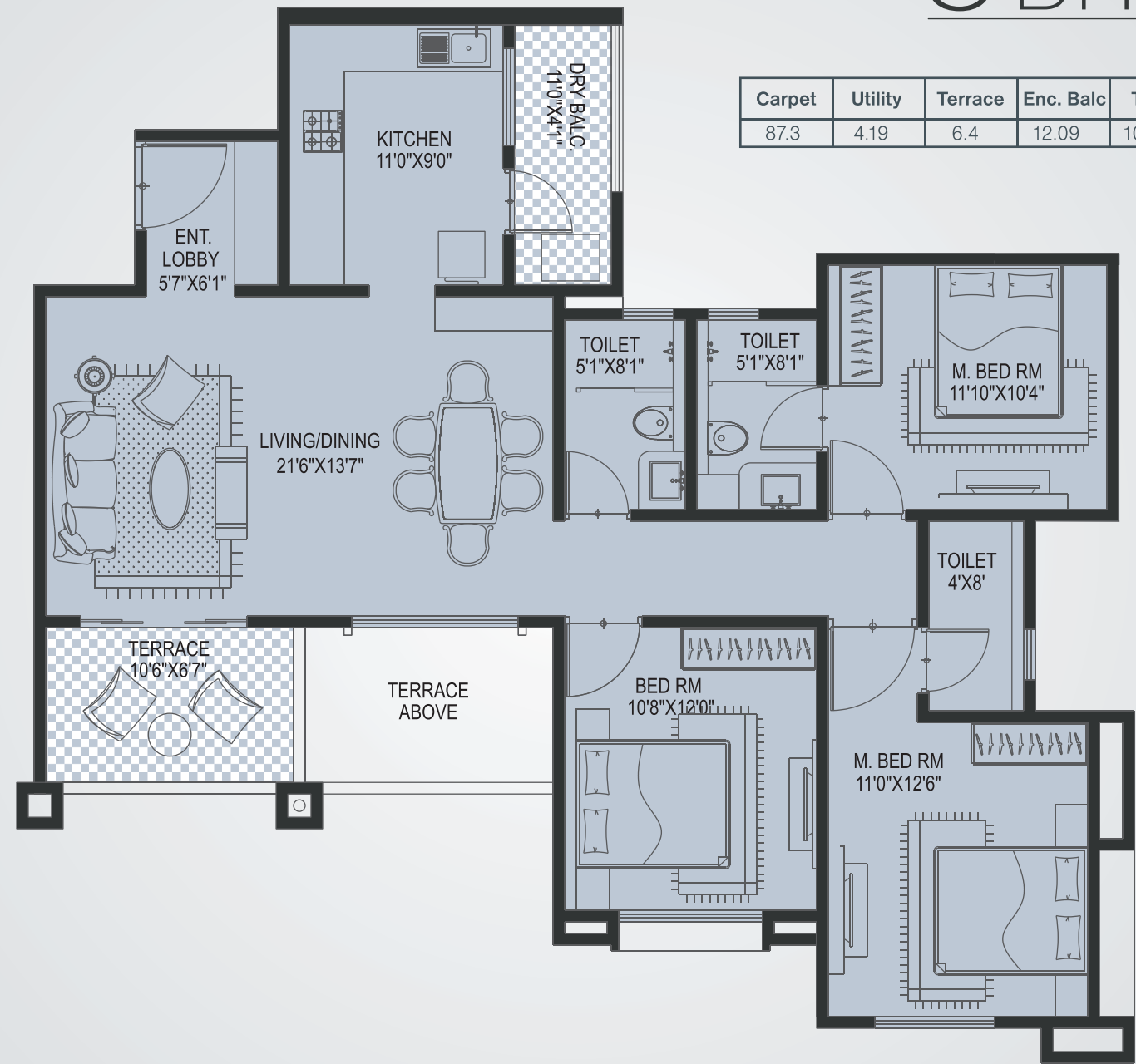


Carpet	Utility	Terrace	Enc. Balc	Total
83.4	4.02	12.22	2.89	103.53



\*Plan shown with enclosed balcony for which the area is mentioned separately on the area chart

# 3 BHK



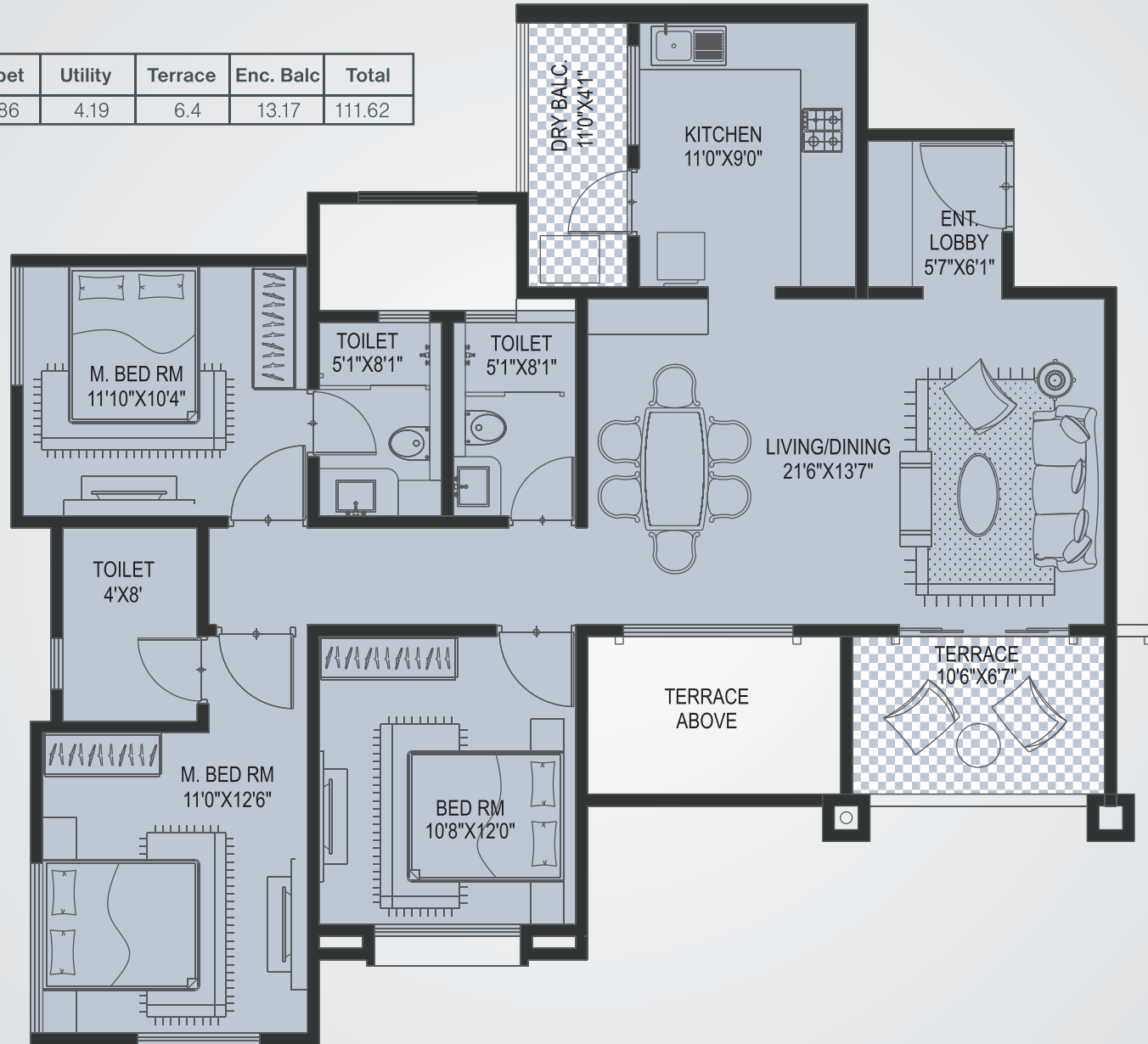
Carpet	Utility	Terrace	Enc. Balc	Total
87.3	4.19	6.4	12.09	109.98



\*Plan shown with enclosed balcony for which the area is mentioned separately on the area chart

# 3 BHK

Carpet	Utility	Terrace	Enc. Balc	Total
87.86	4.19	6.4	13.17	111.62



\*Plan shown with enclosed balcony for which the area is mentioned separately on the area chart

# 3 BHK

Carpet	Utility	Terrace	Enc. Balc	Total
96.49	4.19	13.27	16.01	129.96



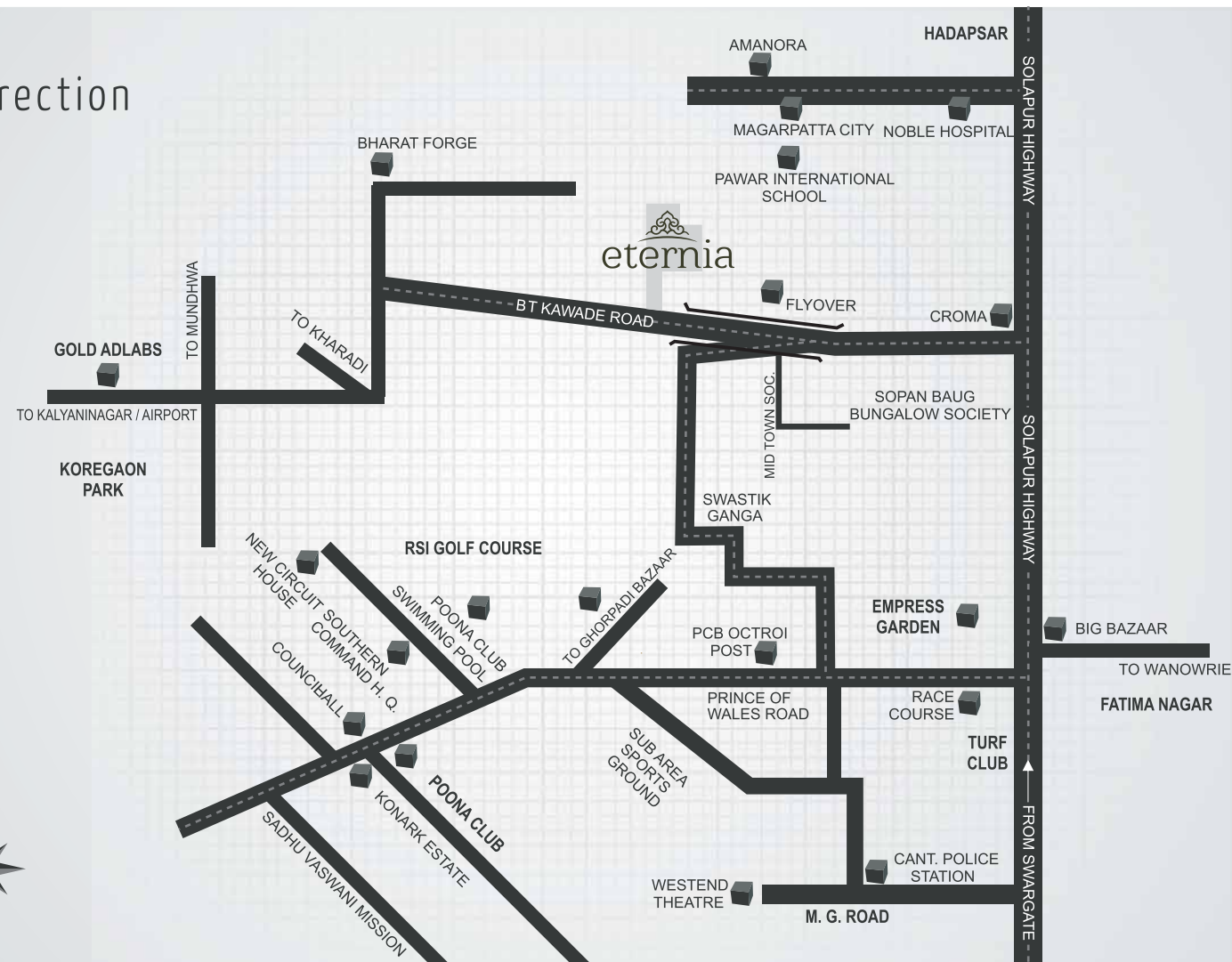
\*Plan shown with enclosed balcony for which the area is mentioned separately on the area chart

[www.kundans.com](http://www.kundans.com)

“Seize the moment.  
It helps being impulsive in life.  
Trust me.”

  
Finest 2&3 BHK Suites Near Sopanbaug

## Get Direction



## Everything you love to be near to, is nearer than ever

Sopan Baug is a sense of pride! The upmarket setting around your home has its proven set of advantages. Schools, colleges, multiplexes, shopping malls, eateries, gardens and all such places that matter in your lifestyle, are within easy reach. Lohegaon Airport is just a leisurely drive away. Kharadi IT Hub, Magarpatta City and the bypass connecting Nagar road to Solapur road, are at convenient distances. Vimannagar, Wagholi, New Hadapsar are the neighbouring suburbs. A cultured and sophisticated neighborhood is something you can be sure of.

### Distances

■ Race Course	2.6 Kms.
■ Empress Garden	2.9 Kms.
■ Noble Hospital	3.9 Kms.
■ Salisbury Park	6.2 Kms.
■ M G Road	6.0 Kms.
■ Amanora Town Center	6.6 Kms.
■ St. Mary's School	4.0 Kms.
■ Koregaon Park	6.6 Kms.
■ Pune Railway Station	5.0 Kms.
■ Airport	11.0 Kms.

\*The above mentioned distances are taken in reference with Google Maps.



"We cannot change the face of the sky, but we endeavour to change the face of the earth"

There are few parallels in the annals of the Indian real estate and construction industry that emulate the success trail blazed by Sanjay Kakade group. Over the past two decades, the company has emerged as one of the most progressive and multi-faceted real estate and construction entities in the country.

With a common objective of building out-of-the-box creation, both these coveted brands have come together. And the upshot is in front of you. As enthralling and awe-inspiring like 'Eternia'



EXCEEDING EXPECTATIONS

Kundan Spaces, is known for refined aesthetic vision and innovative thinking. Creating landmark projects, this new-age construction house is way ahead of the contemporary standards. The coveted brand in real estate has always conceived and produced absolute marvels. To fulfill your aspirations and exceed your expectations!



Site Office : Sr. No. 53/1B, B T Kawade Road, Near Sopan Baug, Ghorpadi, Pune - 411 001, Maharashtra, India.  
Email : eternia@kundans.com Tel. : +91 86002 99991 / 86008 99991

### Credits

ARCHITECT  
Ethique (Mumbai)  
Savli Hingmire & Associates.

MEP CONSULTANT  
Consolidated Consultants  
& Engineers Pvt. Ltd.

LEGAL ADVISOR  
Adv. Surekha Kinkar.

RCC CONSULTANT  
JW Consultants.

LANDSCAPE CONSULTANT  
Forethought Design Consultants.

BRAND CONSULTANT  
RJ Design Pvt. Ltd.

Disclaimer : This brochure is purely conceptual & not a legal offering. The developers reserve the right to amend any details/ specifications/ layout/ floor plans/ elevation/ amenities/ facilities at their discretion. All images are just representation & are not literal. Architectural features may differ in different apartment. For Information the image of the elevation shown in the brochure are of 22 floor, but is sanctioned upto the 17th floor, remaining floors shall be sanctioned in the final plan.

[www.kundans.com](http://www.kundans.com)

“My best wishes for  
the beguiling life you are  
about to step in at Eternia.  
Welcome.”

“Each and every square inch bestows  
happiness, comfort and convenience.

The terraces are large. The specifications are  
top end. Each and every component used to  
sculpt these masterpieces, spell class. Making  
your life a never ending euphoria!”

  
Finest 2&3 BHK Suites Near Sopanbaug





[www.kundans.com](http://www.kundans.com)