

SABARI GARDENS

A decorative flourish consisting of a thin horizontal line that tapers to a point at both ends, positioned directly below the text.

Gardens

Luxury is a feeling hard to achieve but easily recognized, that feeling when you know you've arrived and have a moment to genuinely experience your accomplishments. At Sabari Gardens we aim to package that moment so you can live in it. A constant sense of luxury from the moment you step into your residence, With over 500 trees and Landscaped Gardens spreading over 50,000 sq ft. in the entire layout Sabari Gardens Aims to blend luxury and nature in a manner that feels almost impossible in its perfection, making it truly breathtaking in both view and experience.

Driven by management that believes in doing things differently with an emphasis on innovation and quality, we make sure to offer innovative conveniences to our customers while keeping their needs and wants in mind making it a perfect place to reside for both epicurean people and nature lovers.



Swimming Pool

At Sabari Gardens we strongly believe in the benefits of eliminating stress from the mind, which is why this project includes an independent clubhouse that features a variety of recreational facilities that are unmatched in both scope and in the serenity it offers.

Spread out over 5000 sq.ft., it is open to both residents and their guests and perfect for social meetings. Featuring a large outdoor swimming pool, fitness facilities, gaming rooms, lounge facilities, amphitheater etc. the range and quality of options on offer is staggering.

Attached to the clubhouse is 3000 sq.ft. of landscaped garden that is crafted to give you a bonding with nature.

Walk for exercise or enjoyment on carefully detailed walking paths or feel free to play a game of football or cricket truly indulging your mind in the serenity of it all.

Indoor Sports Facility like table tennis & pool for people who prefer physical activity with the safety from outside elements, we aim to offer as many possible options for physical health and fitness to our consumers. Hone your mental skills as you indulge yourself in a game of chess or carom.

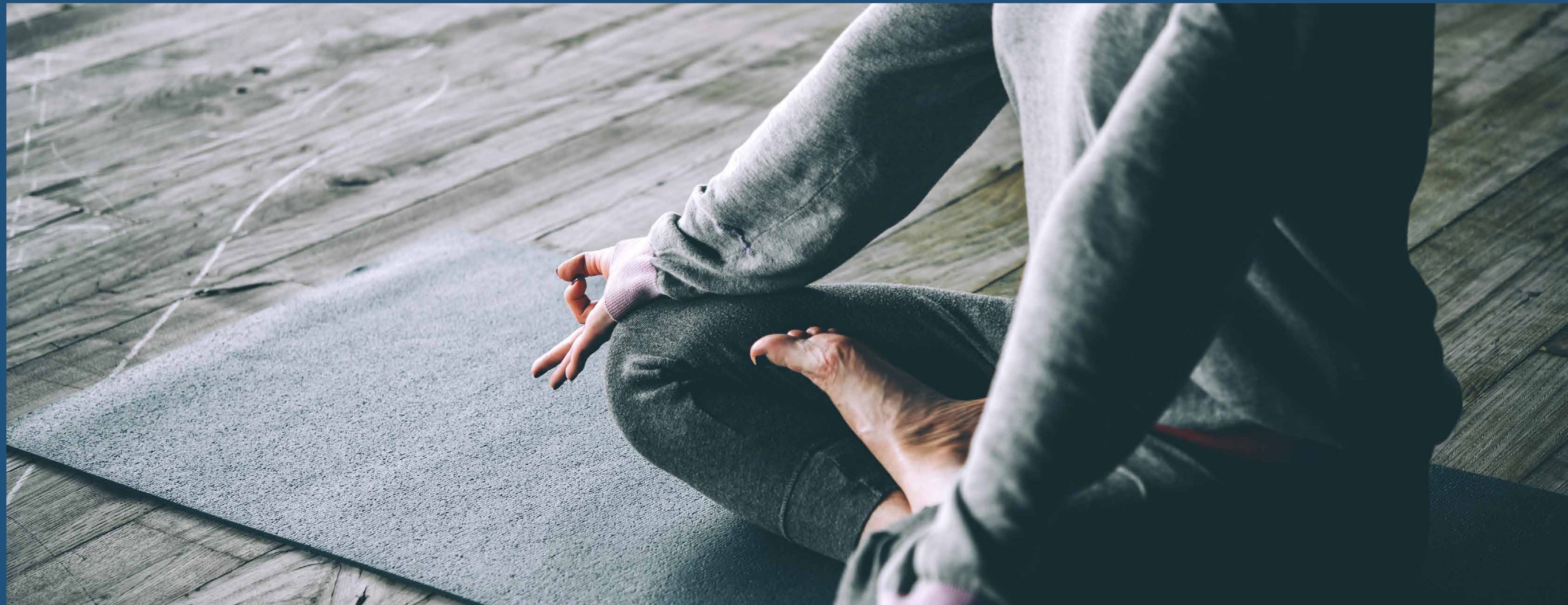


Natural Meditation Centres

Meditate in lawns & Cabanas all across the Greenery or Seat yourself in the warm and luxurious embrace of our steam room and you can physically feel your body unfold and the stress slip away. This is just one of the many health benefits that we provide, which includes the ability to detoxify and nourish the skin and help you revitalize after a tough day.

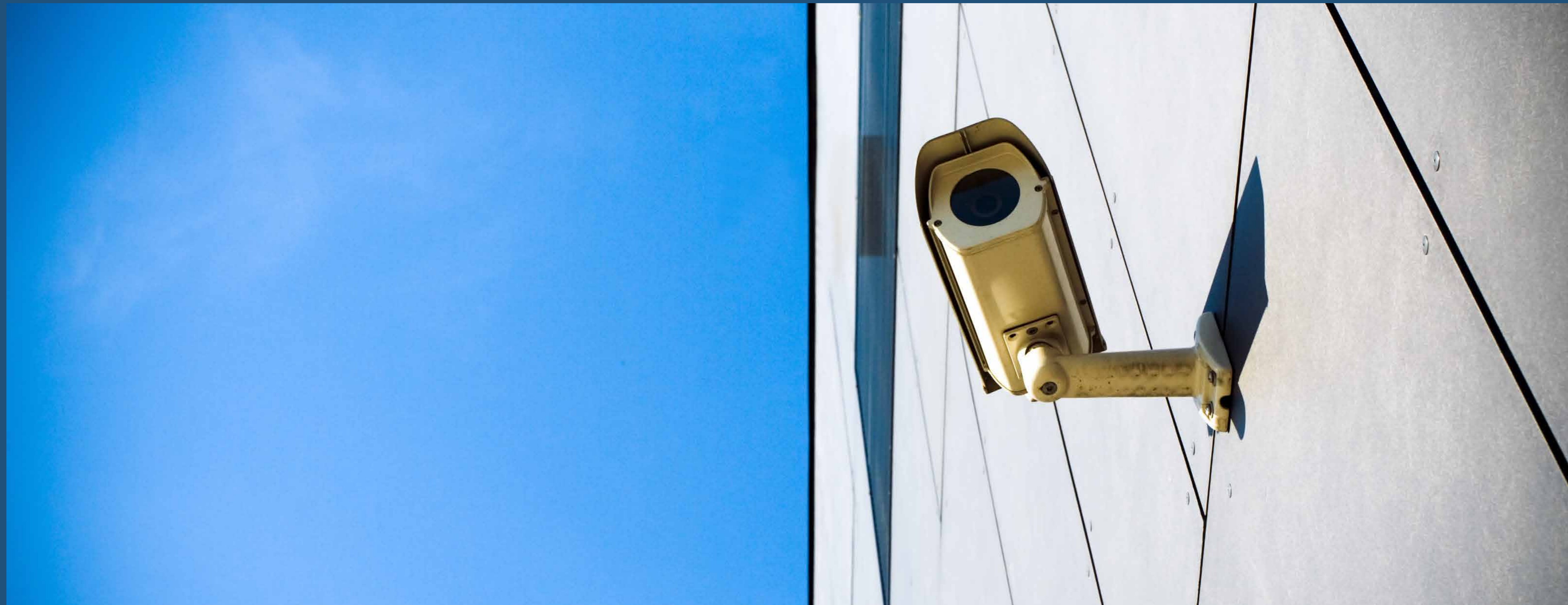
At Sabari Gardens, we also aim to take care of your health much like we take care of your home.

A gym that features latest equipment is provided for those of you who target peak physical performance. A fundamental option for people who want to start on a journey to physical fitness or for those who are already on this journey.



Security

A 3 level security check ensures complete safety of you and your family. Mandatory visitor Screening at entrance level, CCTV facilities at all common areas and video door phones in all flats guarantees the security and safety of you and your loved ones. Home TV's shall be connected with CCTV coverage making parenting a luxury as they need not worry about the safety of their children playing across the landscaped gardens or the indoor sporting facilities. Providing Lifeguards at swimming pools and care takers for outdoor activities we at Sabari don't leave any stone unturned when it comes to the security of you and your family.



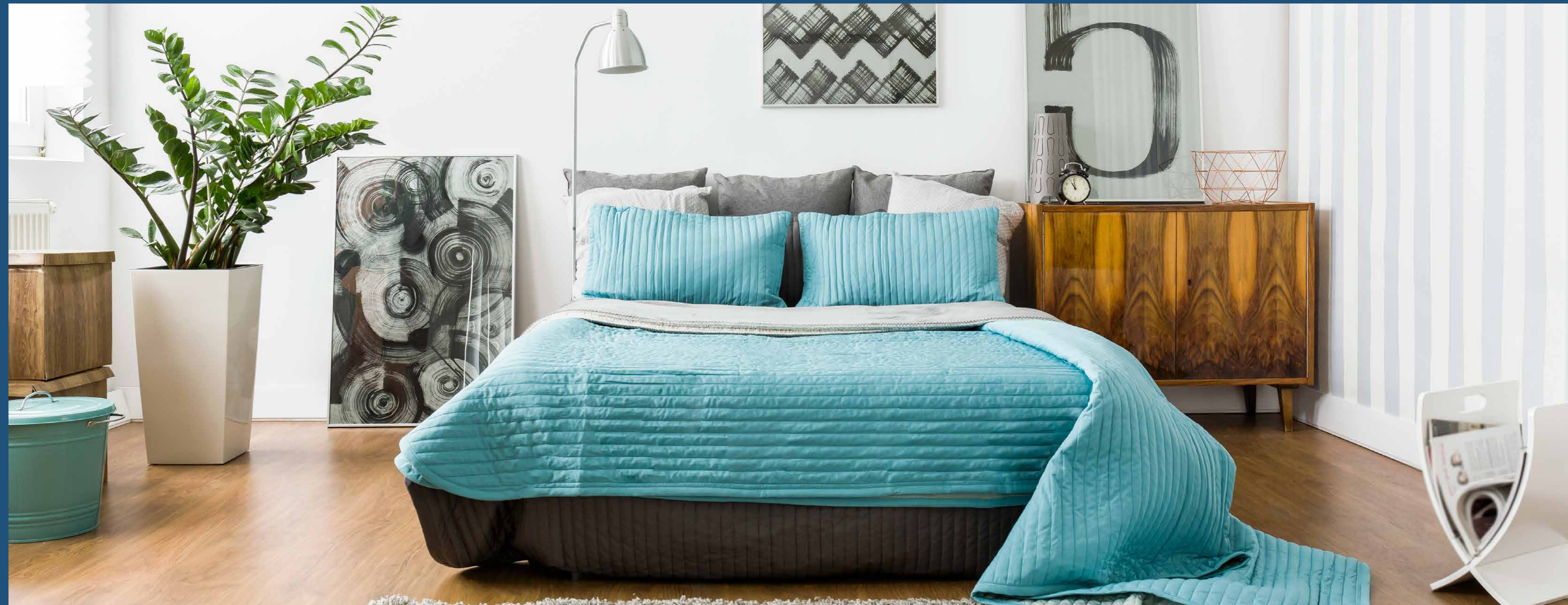
Living Room

*Italian Marble in all rooms,
Wooden Flooring in Master bedroom and Deck area,
Modular Kitchen,
UPVC Windows,
Teak/Cedar Wood Door frames with
45mm Thick Both sides Laminated
FRD Main doors,
Adequate electric power supply and
points in all the rooms with
Automation provision,
Gypsum finish walls with luster paint in entire flat,
Video Door phone and intercom facilities.*



Bedroom

*Provision for Wi-Fi in all flats,
Geysers in all bathrooms,
Marble frames in all windows,
Water Resistant flush Doors in Bathrooms,
Brass fittings & Melamine polish,
Both Sides Laminated flush doors for all bedrooms,
Bathroom with Grohe/Toto fittings and sanitary ware.*



Plans



Ongoing Projects

Alta Vista
1, 2, 3 BHK, Near Suman Nagar, Chembur.

Natekar Heights
3, 4, 5 BHK, Sandu Garden, Chembur.

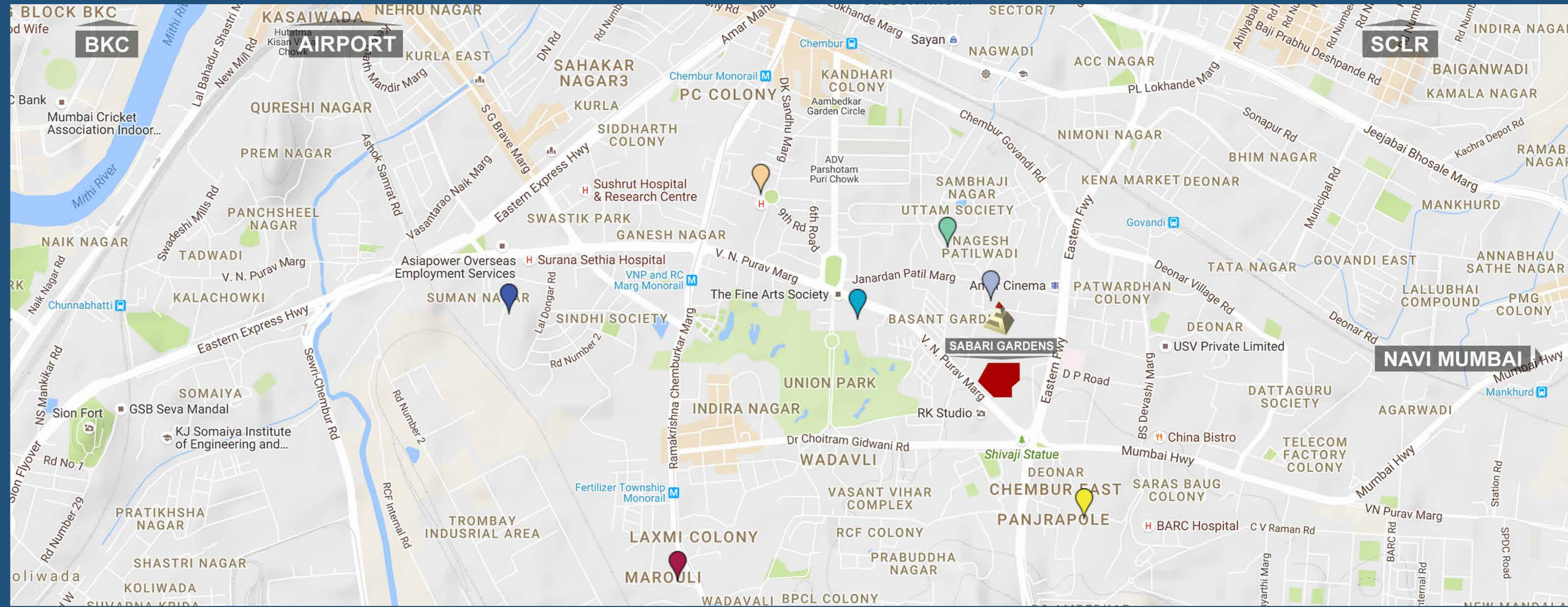
Sabari Palm View
3 BHK, Facing Golf Course,
Near Diamond Garden, Chembur.

Ashville
3, 4 BHK, Off Sioin Trombay Road, Chembur.

Sabari Shaan
1, 2 BHK, Near Ashish Theatre, Chembur.

Sabari Hill Grange
2 BHK, Ghatla Road, Chembur.

Sabari Horizon
3 BHK, Deonar Farm Road.



Credits

Design Architect
Edifice

Consulting Architect
Aakar Architects & Consultants

Structural Engineer
SS Patane Associates

MEP Consultants
ARKK Consulting

Legal Consultant
JLaw Associates

Project Management Consultants
Epsilon Project Managers

Media & Interactive Consultants
Lattice Design



SABARI GROUP

All images used are for illustrative purposes only. Individual features such as windows, brick and other materials' colours may vary, as may heating and electrical layouts. The specifications of apartments/penthouses/houses is correct at the date of print but may be subject to change as necessary and without notice. Images are indicative of the quality and style of the specification and may not represent wholly the actual fittings and furnishings at a development. Specification is not intended to form part of any contract or warranty unless specifically incorporated in writing into the contract.

Floor plans are intended to give a general indication of the proposed floor layout only. The dimensions are accurate to within \pm or - 50mm. Dimensions should not be used for carpet sizes, appliance spaces or items of furniture. Please ask our sales adviser for details of the treatments specified for individual plots. All images and dimensions are not intended to form part of any contract or warranty. Furniture and landscaping is shown for illustrative purposes only.