

30

PANCHSHEEL
PRIME



*Come home
to exclusivity.*



All specifications, design, layouts, conditions, etc. are only indicative and some of these can be changed at the discretion of the builder. These are purely conceptual and not a legal offering. The areas are approx. 1 sq. mt. = 10.764 sq. ft. (10.764 sq.ft. = 1.0 sq. mt. = 10⁶ sq. mm.)

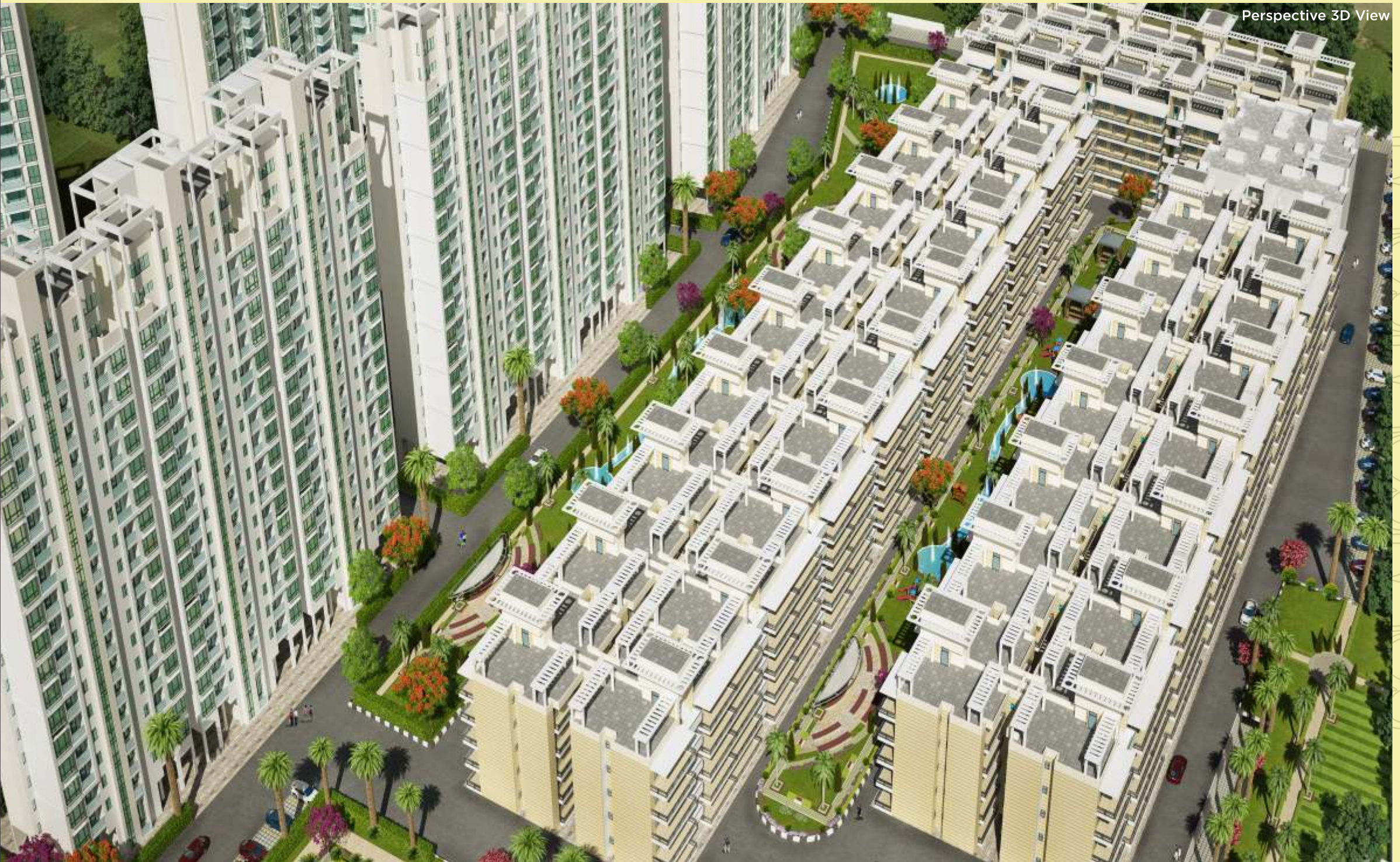
A PERFECT COMBINATION.

Panchsheel Prime390, well-appointed low-rise floors are part of Panchsheel Primrose, a modern gated residential project already a home to many families. Here you get to enjoy the facilities and amenities of group housing without having to compromise on anything. Come, indulge in an independent lifestyle that gives you the freedom of privacy and living as per your own choice.

FEATURES

Low-rise floors with the facilities of a group housing project • G+4, Two side open 3 BHK Floors, • Shopping convenience for daily needs • Parks with play area, walking & jogging tracks • Spacious and well ventilated rooms with windows open to fresh air • Rain water harvesting • Reserved car parking • Power back up facility • 24hrs. water supply in bathrooms & kitchen • Dedicated lift for each tower • In house club with modern facilities • Round the clock security with intercom.

*Low-rise Floors with Big Verandas
and Group Housing Facilities.*



SITE PLAN

HIG

SALABLE AREA=1640 SQ. FT.

3 BEDROOMS + DRESS + 3 TOILETS



RERA Regn. Nos. of Project : Phase-I, UPRERAPRJ8667 | Phase-II, UPRERAPRJ8678 | Phase III, UPRERAPRJ8684 | Phase IV, UPRERAPRJ8687 | For Details visit RERA website: www.up-rera.in

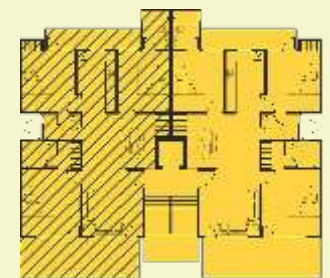
All specifications, design, layouts, conditions, etc. are only indicative and some of these can be changed at the discretion of the builder. These are purely conceptual and not a legal offering. The areas are approx. 1 sq. mt. = 10.764 sq. ft. (10.764 sq. ft. = 1.0 sq. mt. = 10⁶ sq. mm.)

Perspective 3D View



FLOOR PLAN

HIG
SALABLE AREA=1640 SQ. FT.
3 BEDROOMS + DRESS



Flat 3D View



HIG / 3BHK + DRESS

AREA: 1640.00 SQ.FT.

3 Bedrooms

Dress

3 Toilets

3 Balconies

Area	Sq. Ft.	Sq. Mt.
Salable	1640.00	152.36
Built-up	1286.94	119.56
Carpet	993.19	92.27

SPECIFICATIONS



WATER SUPPLY

Underground and overhead water tanks with pumps for 24 hours uninterrupted water supply.



INTERNAL /EXTERNAL FINISH

All internal walls plastered & painted in off-white shade of oil bound distemper, Plaster of Paris punning & cornices in drawing/dining room and bedrooms. Most modern & elegant permanent outer finish with high quality texture paint.



DOORS / WINDOWS

All external doors and window frames in UPVC. Decorative hardwood door at main entrance and rest decorative flush doors duly polished.



KITCHEN

Ceramic glazed tiles up to 2 feet height above counter. Pre-polished granite platform with stainless steel sink.



ELECTRICAL

ISI copper wiring in P.V.C. concealed conduit. Provision for adequate light and power points as well as telephone & TV outlets with protective M.C.Bs.



TOILETS

Provision for hot & cold water system. Glazed tiles in pleasing colours on walls up to door level. European WC, washbasin & cistern in white shade in all toilets.



STRUCTURE

Earthquake resistant R.C.C. framed structure certified by IIT.



HARDWARE

All fittings with aluminum powder coated materials.



FLOORING

Vitrified tiles.

Panchsheel Group. Building Future.

World-class residential & commercial projects
in Noida, Greater Noida, Vaishali & Ghaziabad

Nearly 3 decades
of strong standing

6500+ Possession
given till 30th June 2017

Thousands of
Satisfied Customers

Over 10,000 apartments
under construction

Delivered Projects



Actual Image

PANCHSHEEL
PRIMROSE

2/3 BR Apts. Opp. Govindpuram, Anaj Mandi, GZB.

Ongoing Projects



Actual Image

PANCHSHEEL
PRIME 390

LOW-RISE FLOORS AT PANCHSHEEL PRIMROSE, GZB.

Low-rise (G+4 Storied) 3 BHK apartments with 8 ft. wide verandah

Delivered Projects

Approx. 300 families moved in



Actual View

Phase-1 delivered

PANCHSHEEL
H4NISH

2/3 BR Homes Sec-1, Gr. Noida

Approx. 500 families moved in



Actual View

PANCHSHEEL
GREENS
2/3/4 BR Apts. Gr. Noida (West)

Plot No. GH-01A, Sector 16B, Gr. Noida (W)

Book in 2 new towers



Actual View

PANCHSHEEL
Wellington
At Crossings Republik, NH-24, Ghaziabad
2/3 BEDROOM APARTMENTS

Crossings Republik, Ghaziabad



Actual View

PANCHSHEEL
Well Bazaar

At Wellington, Crossings Republik, Ghaziabad



Actual View

PANCHSHEEL
SQUARE
SHOPS OFFICE SPACES FOOD COURT

Crossings Republik, NH-24

Ongoing Projects



Actual View

PANCHSHEEL
PINNACLE
Live above everything else

Plot No. GH-01A, Sector 16B, Gr. Noida (W)
High-rise apartments
Construction using aluminium shuttering



Actual View

PANCHSHEEL
शिव
The name is the address

2/3 BR HOMES, Sec-75, Gr. Noida
Construction using aluminium shuttering



Actual View

PANCHSHEEL
Pebbles

Homes near Vaishali Metro Stn., Sector-3, Vaishali, GZB



Actual View

PANCHSHEEL
GREENS-II
2/3 BR Apts. Gr. Noida (West)

Plot No. GH-01A, Sector 16, Gr. Noida (W)



Actual View

Ready to move-in shops

PANCHSHEEL
Greenaria
Premium Retail Spaces at G. Noida (West)

Plot No. GH-01A, Sector 16B, Gr. Noida (W)



Actual View

Panchsheel
Villas
GREATER NOIDA (WEST)

Plot No. GH-01A, Sector 16, Gr. Noida (W)



Prospective View

PANCHSHEEL
GREENMART

Plot No. GH-01A, Sector 16, Gr. Noida (W)

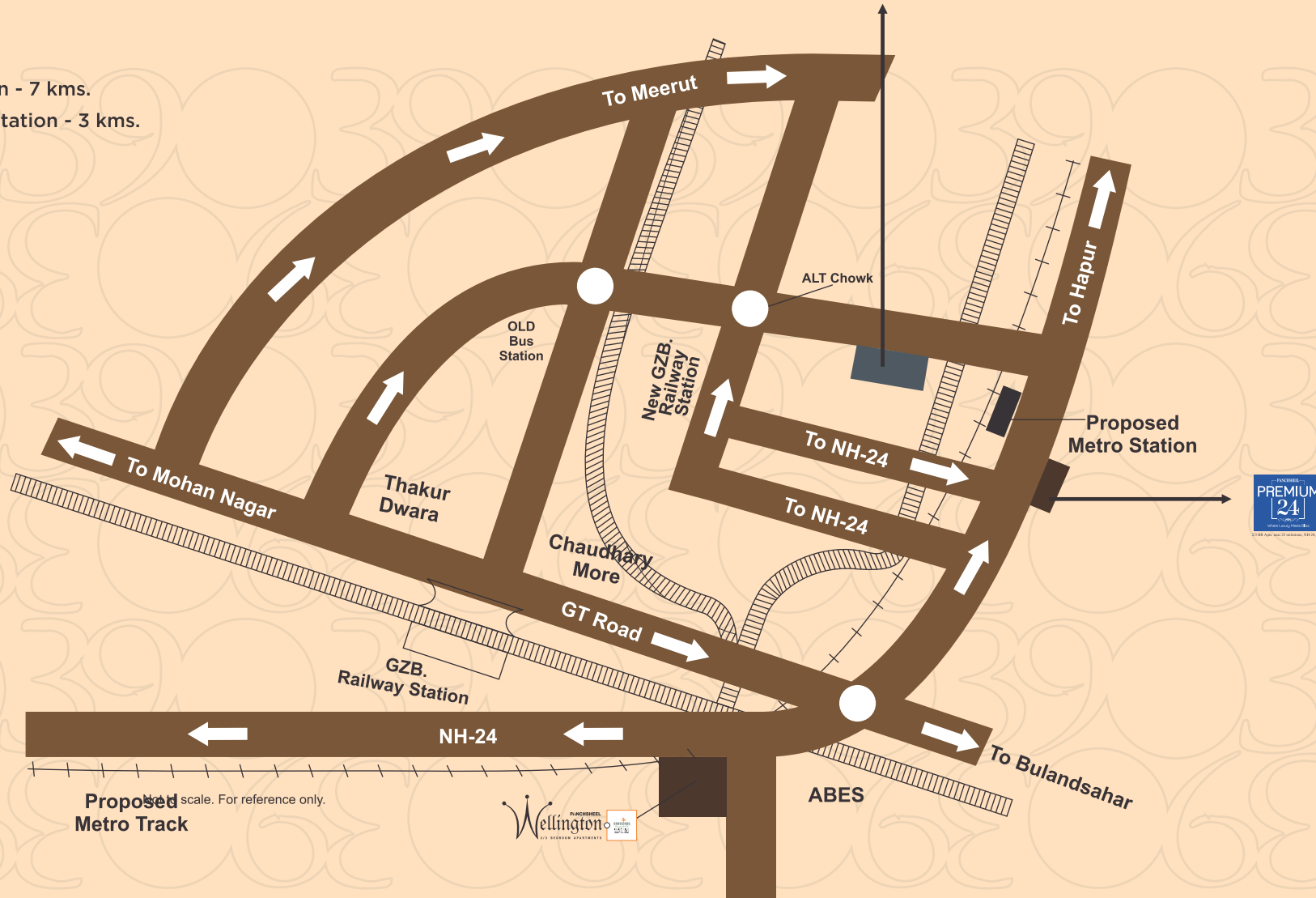
LOCATION MAP

PANCHSHEEL PRIME 390
LOW-RISE FLOORS AT PANCHSHEEL PRIMROSE, GZB.

PANCHSHEEL PRIMROSE
2/3 BHK Apts. Opp. Govindpuram, Anaaj Mandi, GZB.

Location Advantages

- Ghaziabad Railway Station - 7 kms.
- New Ghaziabad Railway Station - 3 kms.
- Old Bus Stand - 4 kms.
- CGO Complex - 2 kms.



Panchsheel Buildtech Pvt. Ltd. (ISO 9001:2008 Company)
 Corporate Office: H-169, Sector 63, Noida-201301 | Tel.: 0120- 4777700 / 4777777 (15 Lines) | Fax: 0120-4777798
 Site Address: Panchsheel Prime390 at Panchsheel Primrose, Opp. Govindpuram Anaaj Mandi, Ghaziabad | Email: sales@panchsheelgroup.com
 Toll Free No.: 1800 200 3656 | sms PBL to 53030 | Website: www.panchsheelgroup.com



Sales Enq. : 8287 789 789



All specifications, design, layouts, conditions, etc. are only indicative and some of these can be changed at the discretion of the builder. These are purely conceptual and not a legal offering. The areas are approx. 1 sq. mt. = 10.764 sq. ft. (10.764 sq. ft. = 1.0 sq. mt. = 10⁶ sq. mm.)