

“अब रोज लंच
घर पर”

the
baya 
victoria



It's not just your home which advertises that you have 'arrived', but also the fine things that surround you.

At The Baya Victoria, everything that you and your family could want is within easy reach. Imagine being close to the finest hotspots and places of interest. Imagine walking to your workplace; or working so close, that you can *come home for lunch every day*.

You're conveniently located near malls, supermarkets, bazars, schools, hospitals and places of worship. So you never need to go far for your daily needs.

Want to give the kids a morning's outing? There's the famous Rani Baug zoo nearby. Need to ride to town or the suburbs? Byculla Station is less than a minute's walk away...





The Baya Victoria lobby: an architect's perspective

MahaRERA Registration No. P51900013240 MahaRERA URL: <https://maharera.mahaonline.gov.in>

1



2





Beauty all around

Treat your eyes to gorgeous views of the sea and the Mahalaxmi racecourse, and enjoy refreshing glimpses of the tree-lined Rani Baug Zoo. Enjoy fresh open spaces, and take pride in having some of the plushiest multiplexes in the neighbourhood...

1 View to the East as seen from The Baya Victoria 2 View to the West as seen from The Baya Victoria

"MahaRERA Registration No. P51900013240 MahaRERA URL: <https://maharera.mahaonline.gov.in>"

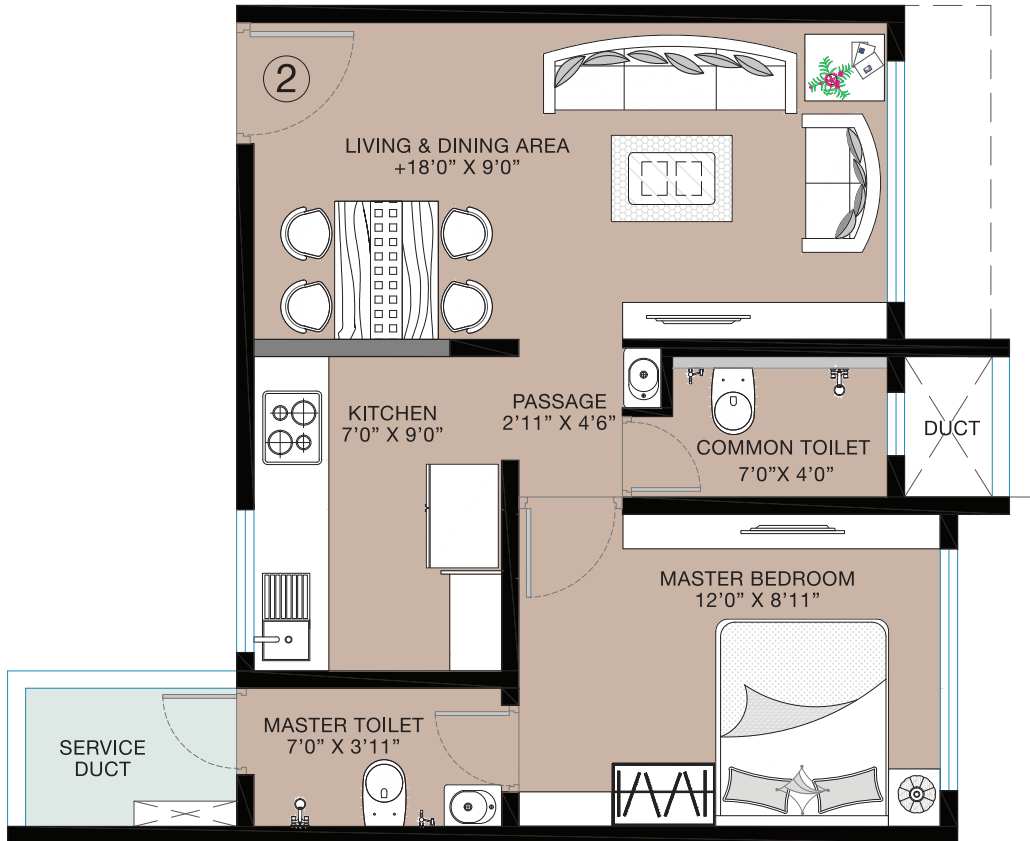


Attention to the finer points

While you rest your eyes, you can also rest your heart in the knowledge that Baya has looked into the smallest details to make living a dream.

For instance, there's provision for an airy, modern, open kitchen concept, where a half-wall gives the homemaker a good view of and easy access to the neighbouring room, while rustling up a special meal for the family.



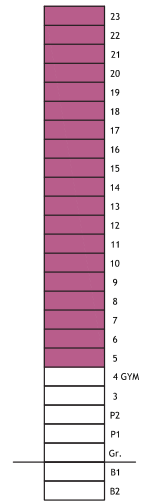


TYPE-B

1 BHK

Municipal Carpet Area - 410 sq ft

RERA Carpet Area - 430 sq ft



WING-B
UNIT NO.-502-2302



Convenience meets chic

For a living space as functionally practical as The Baya Victoria, we haven't compromised on the quality of daily life.

Take a look at the high-end features on our premises:

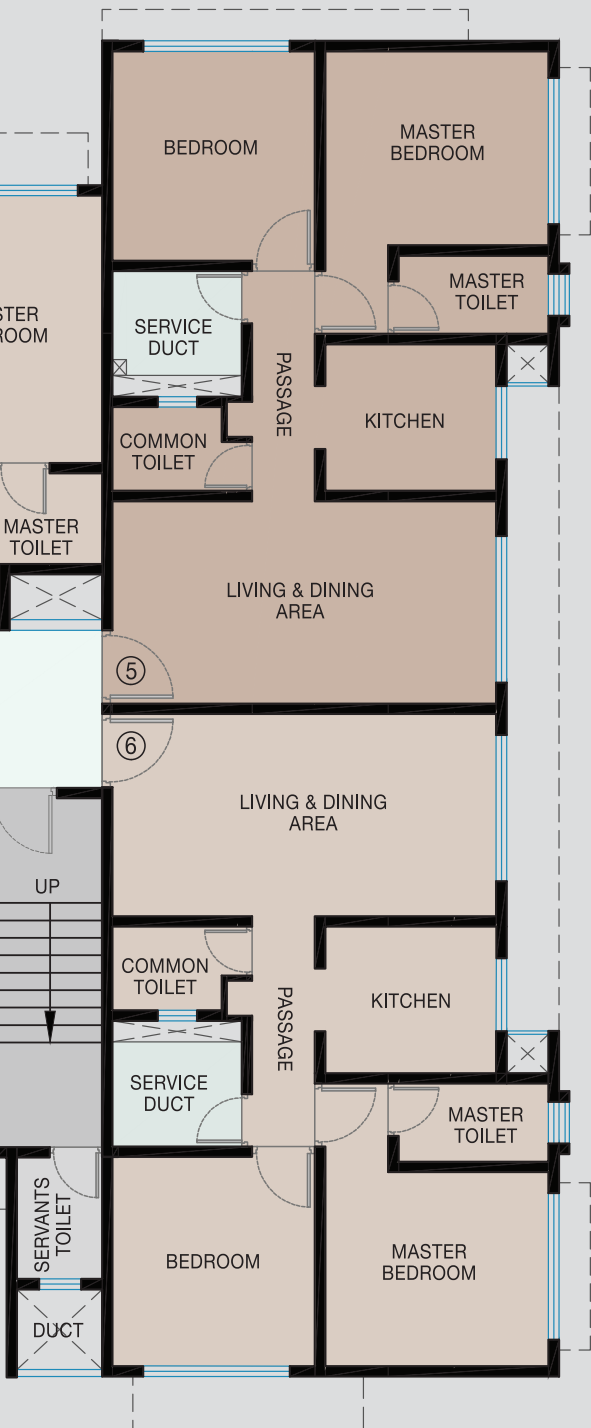
- 22 residential floors from the 4th floor up
(2 level basement, ground floor/entrance lobby,
2 level podium - residences from 4th to 25th floor)*
- Ample multi-level parking with 2 car lifts
- 4 passenger lifts
- An impressive society office
- Well-equipped gymnasium
- Grand entrance lobby




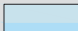


"MahaRERA Registration No. P51900013240 MahaRERA
URL: <https://maharera.mahaonline.gov.in>"

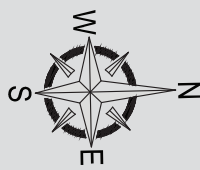
* Subject to change as per rules and regulations



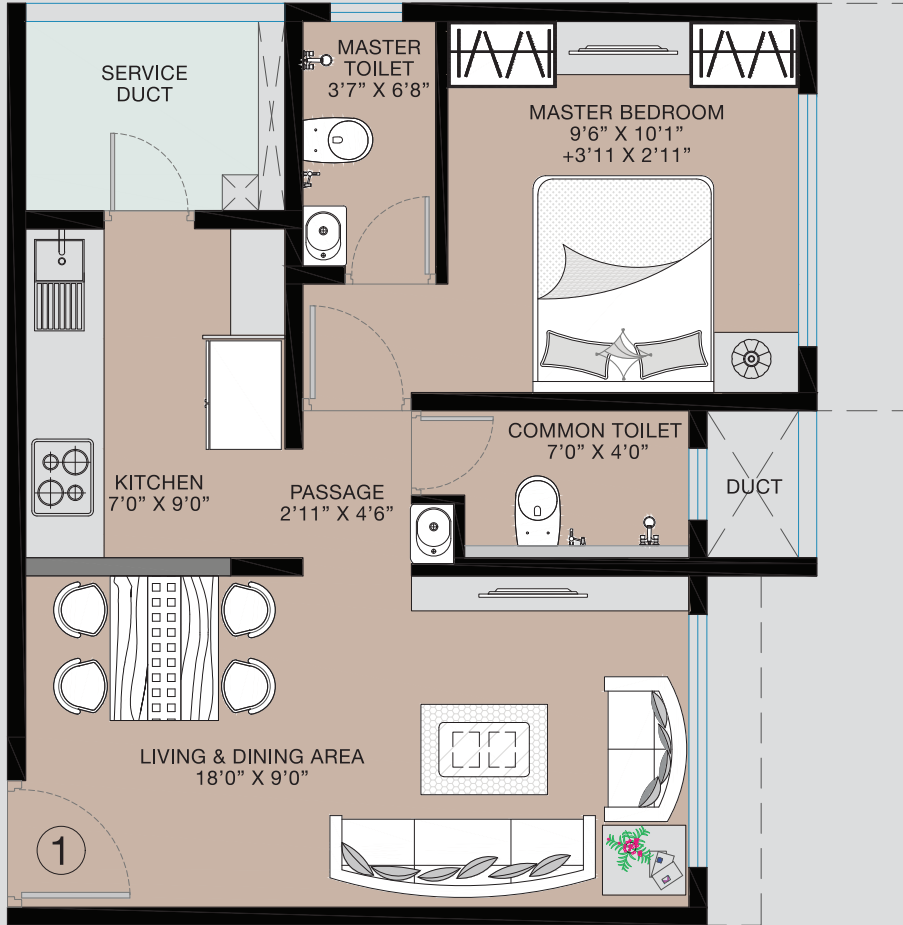


LEGEND

-  2 BHK - 4 UNITS / FLOOR
-  1 BHK - 2 UNITS / FLOOR
-  LOW HEIGHT WALL
-  FULL HEIGHT WALL



TYPICAL FLOOR LAYOUT

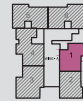
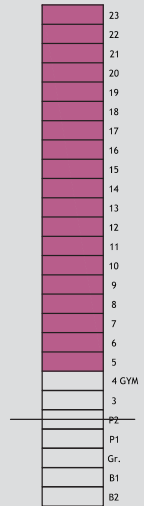


TYPE-A

1 BHK

Municipal Carpet Area - 406 sq ft

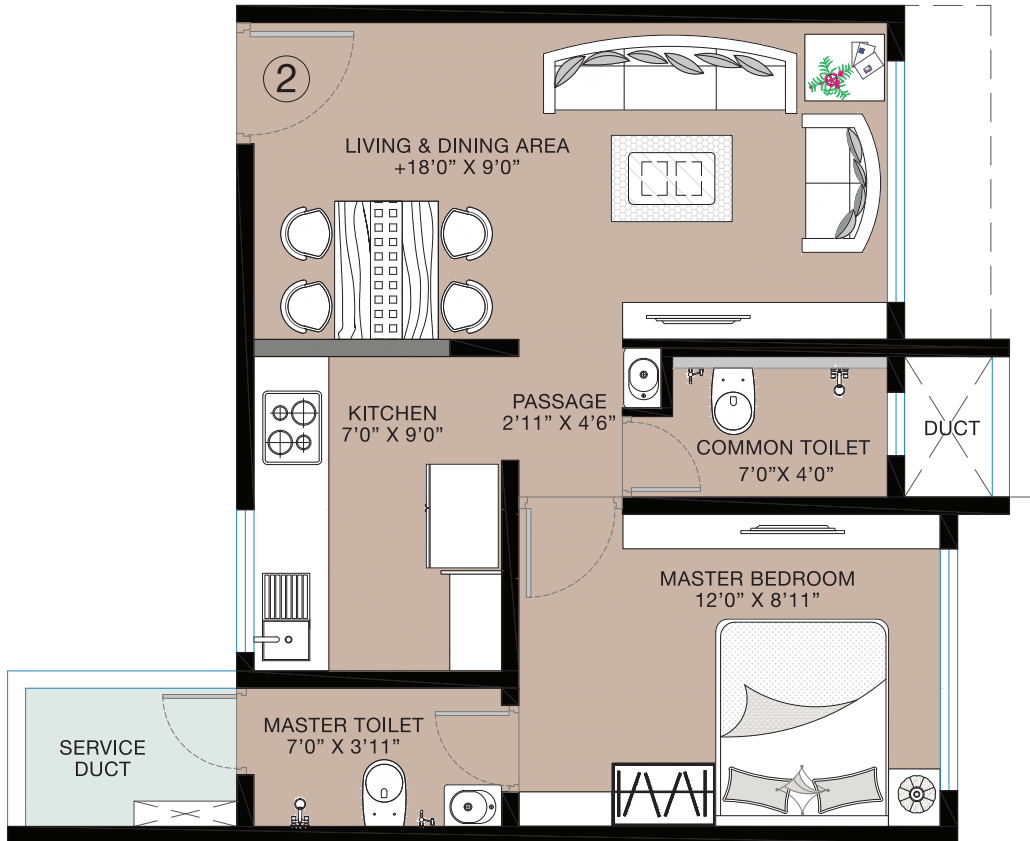
RERA Carpet Area - 429 sq ft



WING-B

FLAT NO.-501-2301



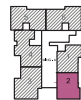
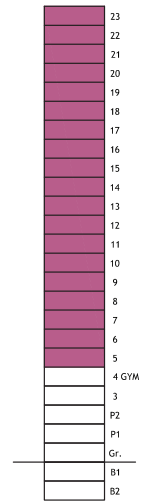


TYPE-B

1 BHK

Municipal Carpet Area - 410 sq ft

RERA Carpet Area - 430 sq ft



WING-B
UNIT NO.-502-2302

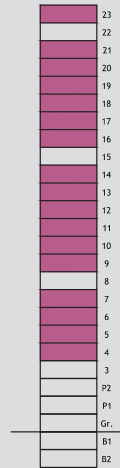
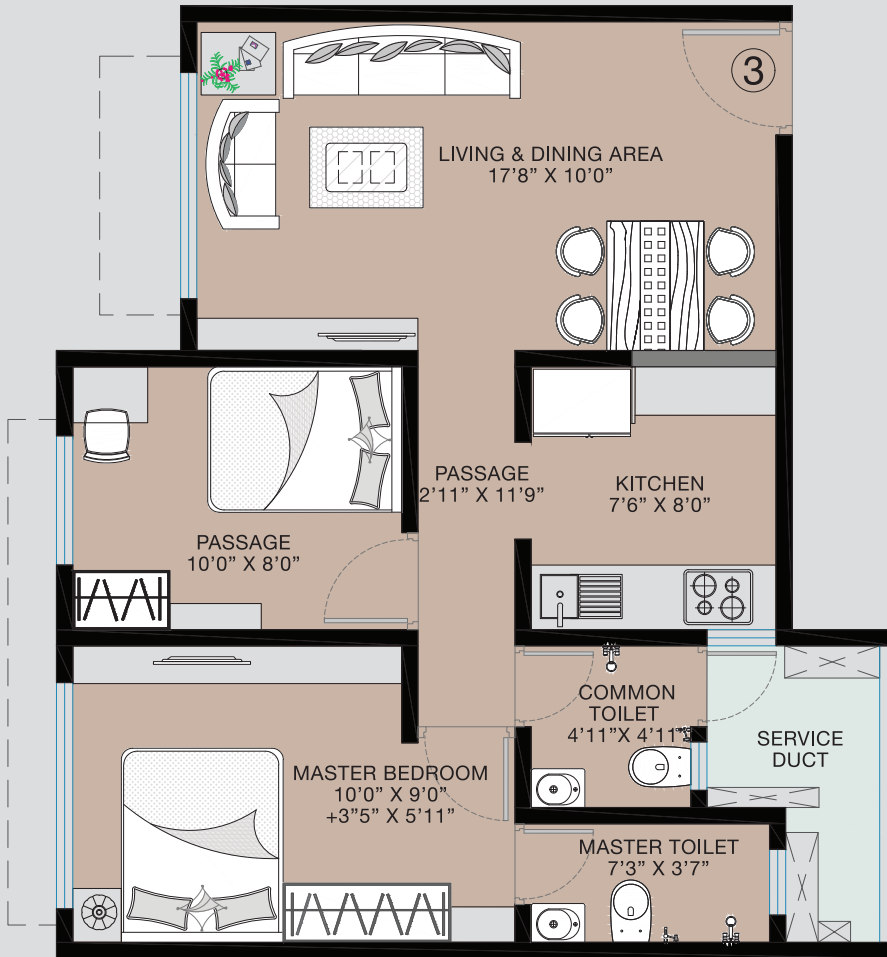


TYPE-C

2 BHK

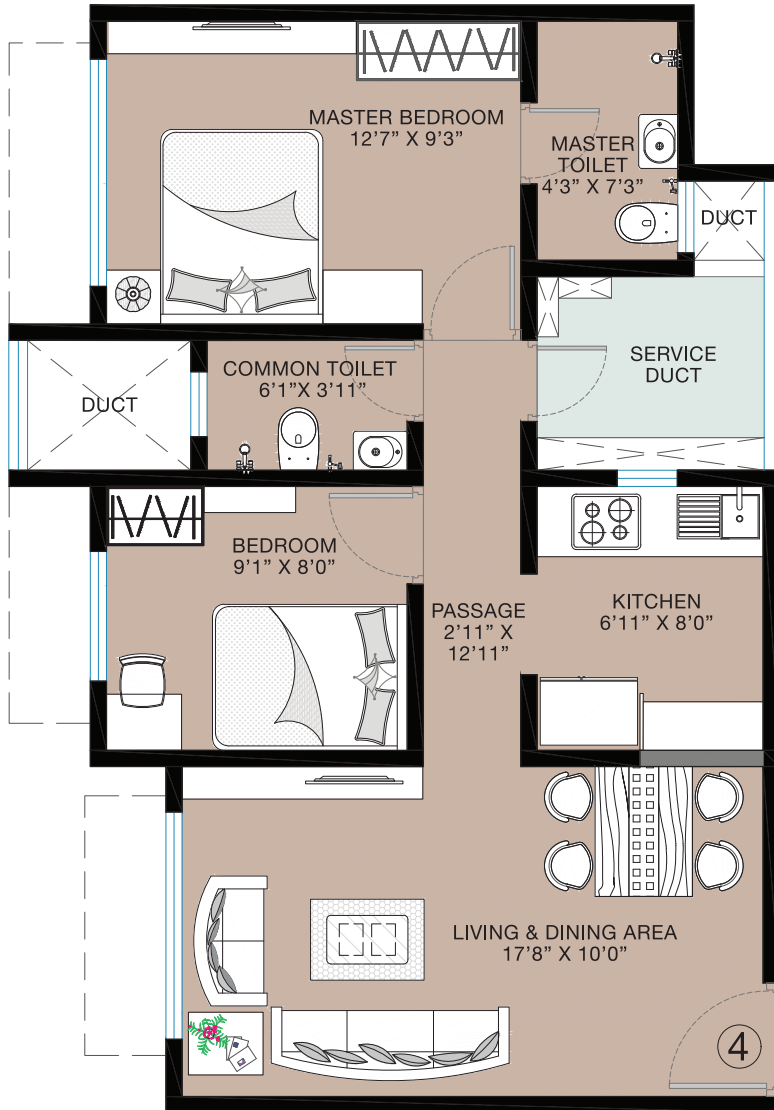
Municipal Carpet Area - 521 sq ft

RERA Carpet Area - 553 sq ft



WING-B
FLAT NO. - 403 - 2303



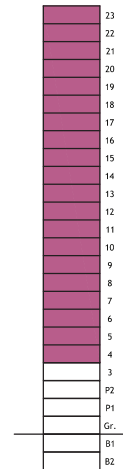


TYPE-D

2 BHK

Municipal Carpet Area - 523 sq ft

RERA Carpet Area - 553 sq ft



WING-B

FLAT NO. - 404 - 2304

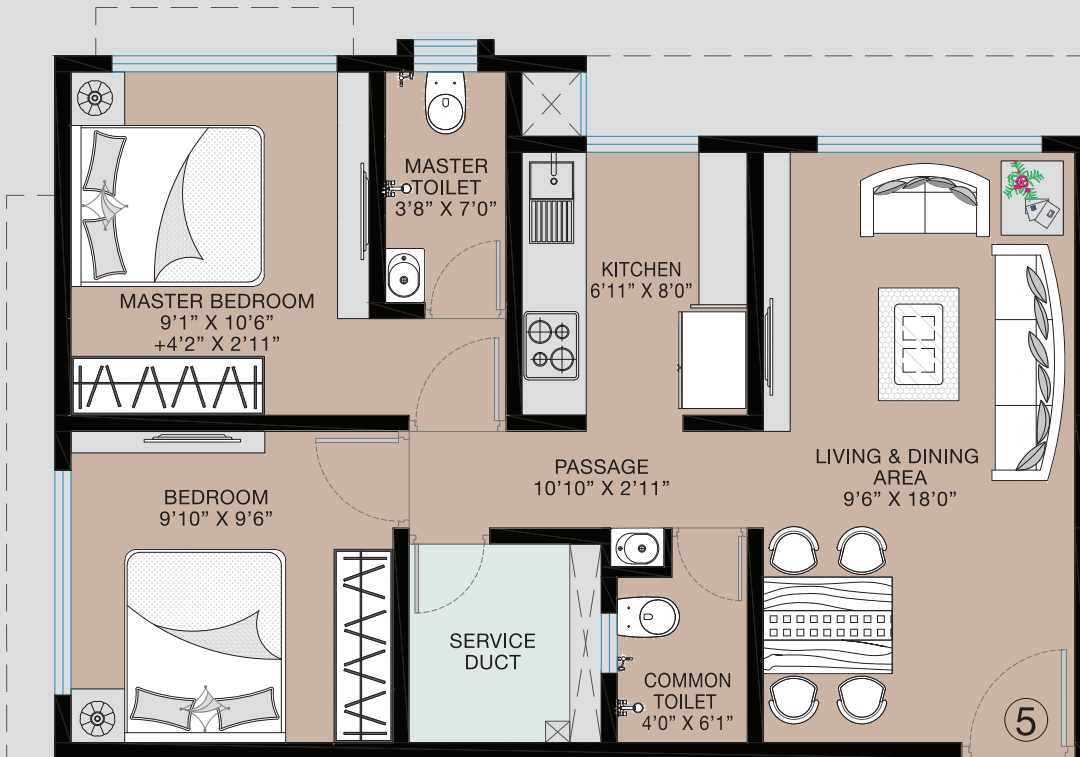


TYPE-E

2 BHK

Municipal Carpet Area - 519 sq ft

RERA Carpet Area - 551 sq ft



WING - B

FLAT NO. - 405 - 2305

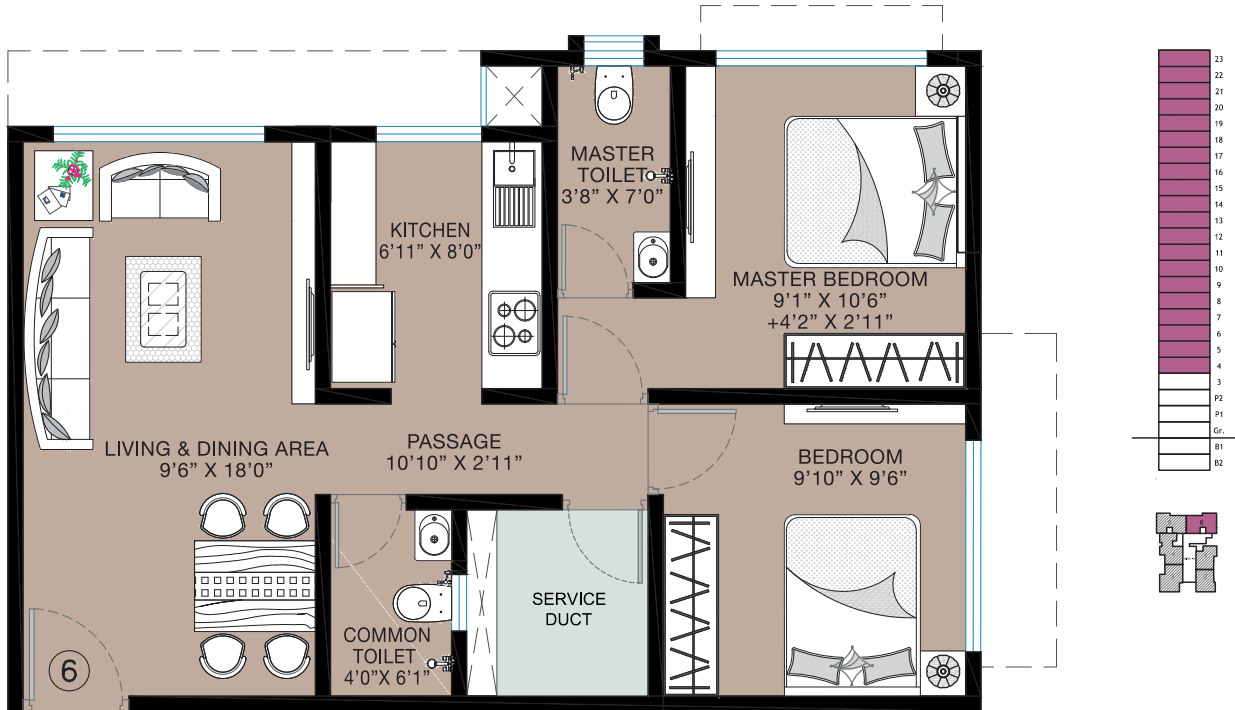


TYPE-E

2 BHK

Municipal Carpet Area - 519 sq ft

RERA Carpet Area - 551 sq ft

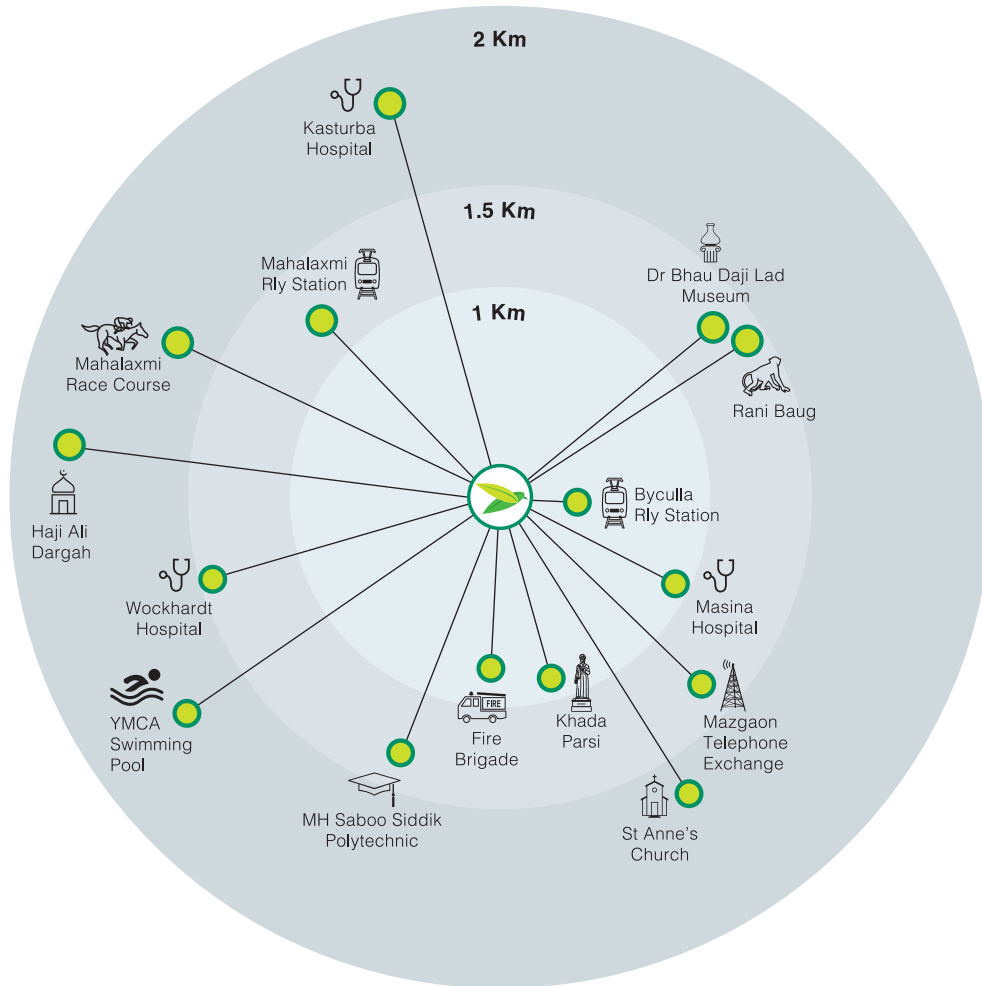


WING-B

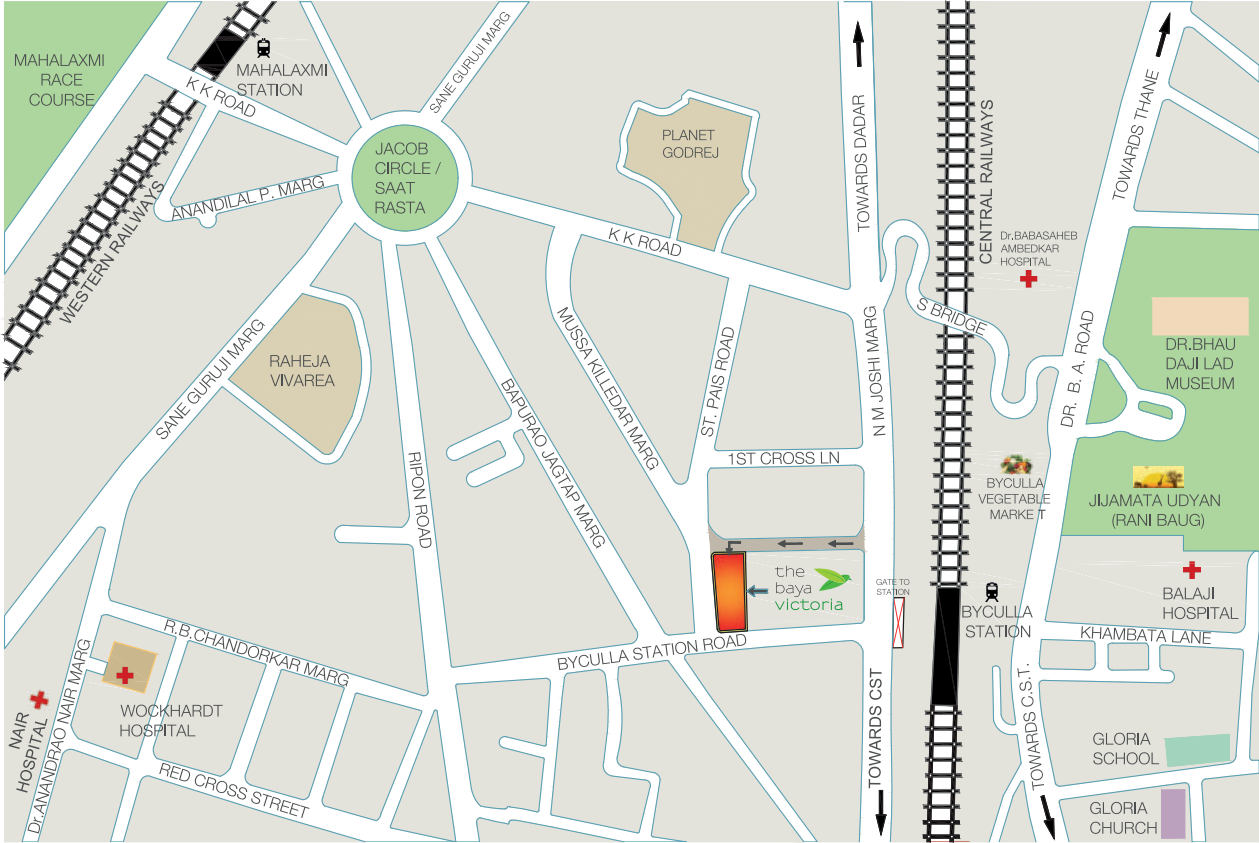
FLAT NO.-406-2306



Radial map



Location map



Some of our past projects



The Baya Park, Dadar (W): an architect's perspective



The Baya Grove, Wadala: an architect's perspective



The Baya Goldspot, Andheri (E): an architect's perspective

The Baya Company: Creators of the project

The Baya Company is a new generation real estate developer that believes life is in the details.

At The Baya Company, we understand that your home is probably the most important purchase you'll ever make. Therefore we build it with as much care as we'd build our own, to help you live a good life for years to come.

We believe in providing lifelong value through thoughtful planning, maximization of utility and minimization of maintenance costs.

All of this gets reflected in homes that help you enjoy a higher standard of living, without increasing the cost of living.

Our name is inspired by the Baya, a weaverbird that meticulously and skilfully builds weather-proof, predator-proof nests. Our identity is formed out of two fresh green leaves uniting to create a bird.

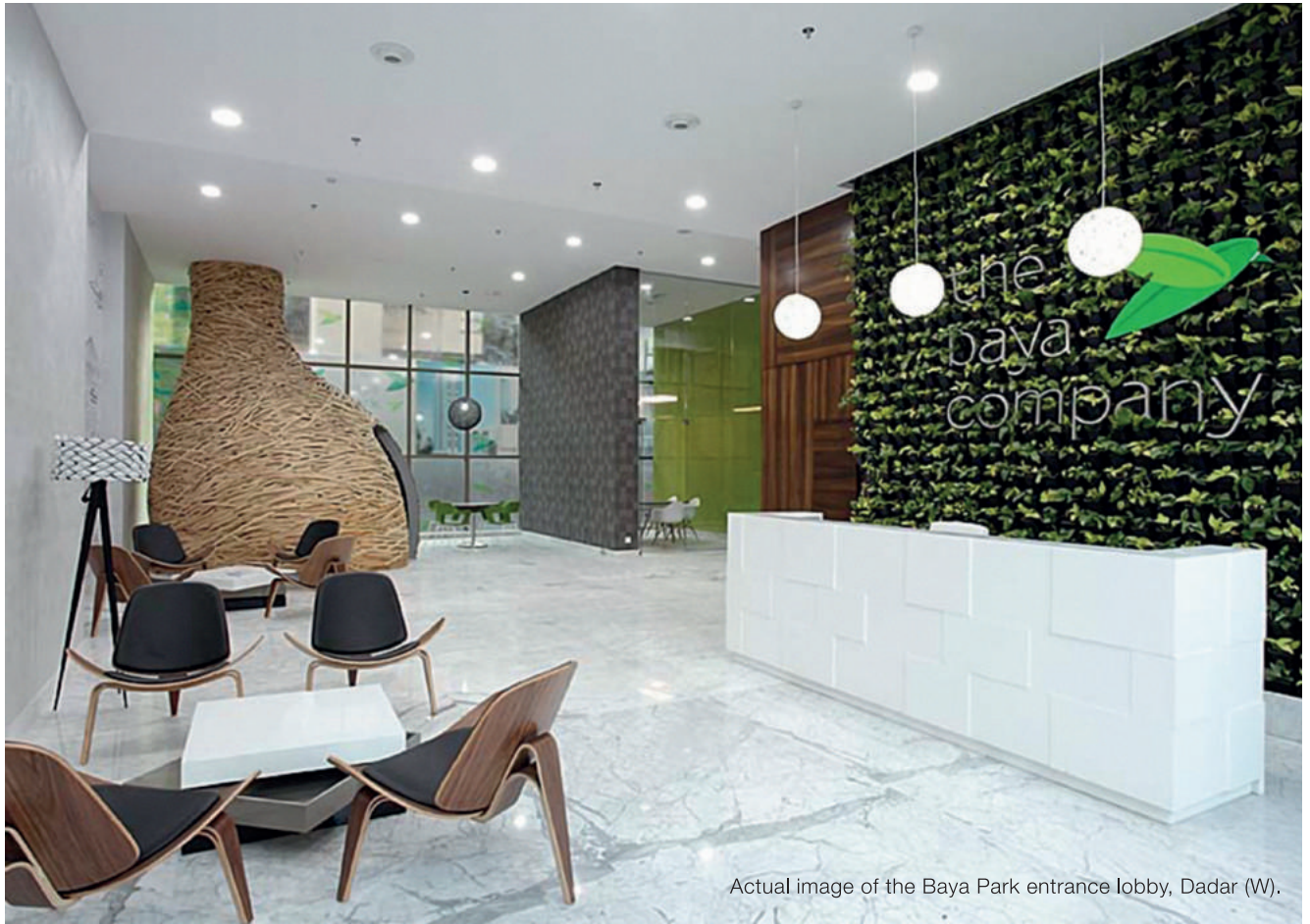
The people behind The Baya Company

The partners of The Baya Company are highly qualified and have a combined experience of over 50 years in the industry.

They have in-depth knowledge, experience of various aspects of development, and have been associated with some of the largest redevelopment projects in Mumbai.

Our completed projects

- The Baya Park, Dadar
- The Baya Grove, Wadala
- The Baya Goldspot, Andheri (E)
- Project Affected Persons (PAP) project, Kanjurmarg (E): three phases completed, fourth phase work in progress.



Actual image of the Baya Park entrance lobby, Dadar (W).

the
baya
company



details make a difference

203-204, 2nd Floor, Orbit Plaza, New Prabhadevi Road, Prabhadevi, Mumbai 400 025
M: +91 77380 57511 W: www.thebayacompany.com "MahaRERA Registration No. P51900013240
MahaRERA URL: <https://maharera.mahaonline.gov.in>"

"The design, plans, specifications, facilities, furniture, accessories, dimensions and images etc shown in the brochure are indicative for representative purpose only and are subject to the approval of the respective authorities. The Baya Company and M/s. Renaissance Construction (Janta Sevak Nagar) reserve the right to change the same, without any notice or intimation. This does not constitute an offer and/or contract of any nature between the owner/developer and recipient/buyer/purchaser. Omission of providing any of the said amenities or facilities shall not constitute breach and/or grounds for litigation against the owner/developer."