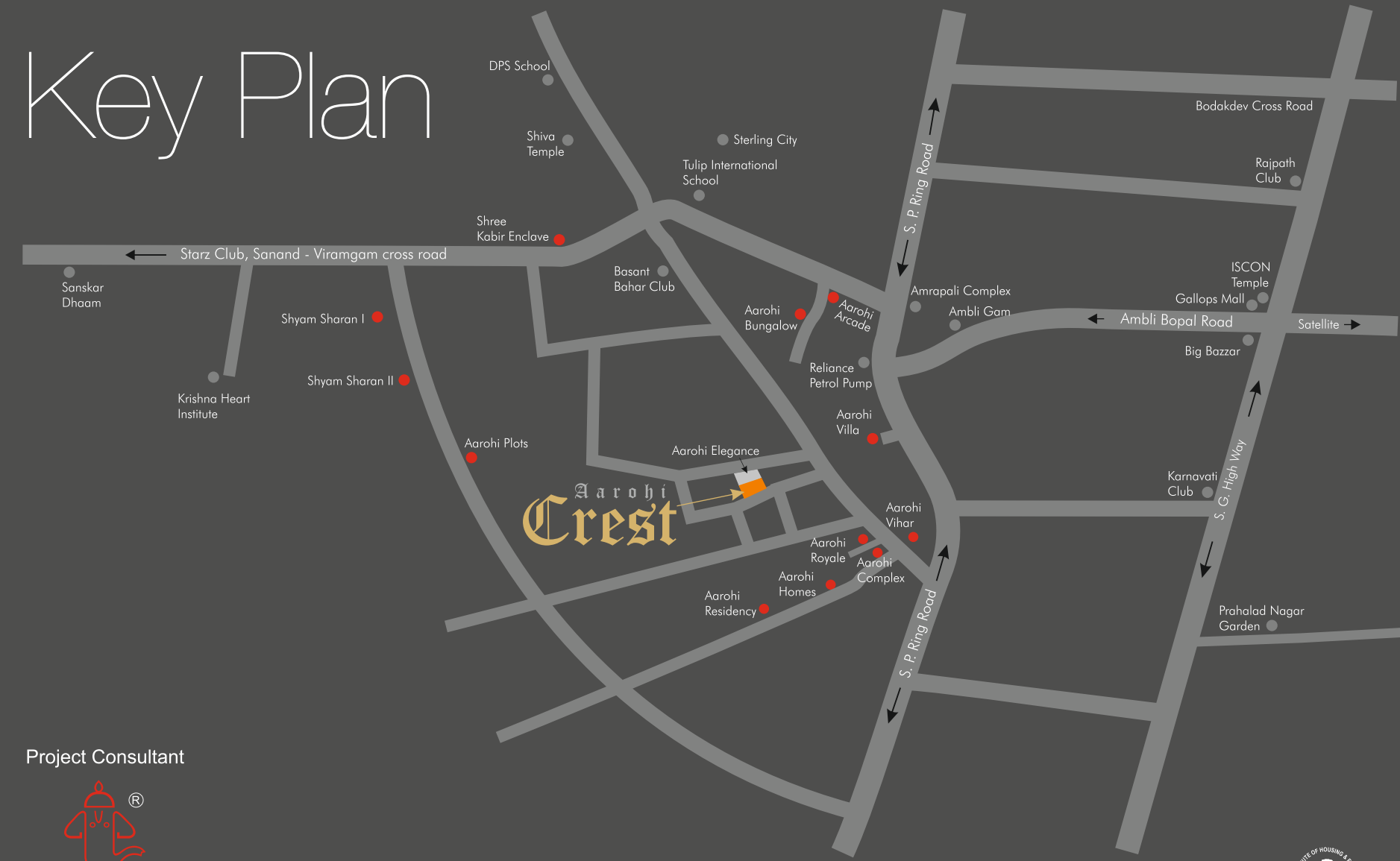


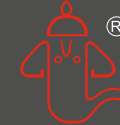
Key Plan



elegance finds expressions at

Aarohi
Crest

Project Consultant



**SIDDHI
DEVELOPERS**

Office
Aarohi Complex, Nr. Sun City, 200ft. Ring Road, South Bopal,
Ahmedabad - 380058. Ph: (02717) 243200, 92280 08075

Site
Near Aarohi Royale, 200ft. Ring Road to Gala Gymkhana Road,
South Bopal, Ahmedabad - 380058.

www.siddhidevelopers.com | info@siddhidevelopers.com

Please Note

Legal expenses, stamp duty, G.E.B. charges, Service Tax, VAT etc. shall be borne by the members

Any additional charges or duties levied by the Government / Local authorities during or after the completion of the scheme will be borne by the purchaser

In the interest of continual developments in design & quality of construction, the developer reserves all rights to make any changes in the scheme including technical specifications, design, planning, layout and all the allottees / purchaser shall abide by such changes

Changes / alteration of any kind including the elevations, exterior colour scheme of the building or any other change affecting the overall design, concept & outlook of the scheme are strictly NOT PERMITTED during or after the completion of the scheme

This brochure is intended only to convey the essential design and technical features of the scheme and does not form part of legal document



Member of GIHED **GIHED**

Architect
Mehul Pandya
Vikram Pandya & Asso.

Structural Consultants
Bhoomi Consultants

Utilities Consultants
Vimarsh

Electrical Consultants
Transenergy

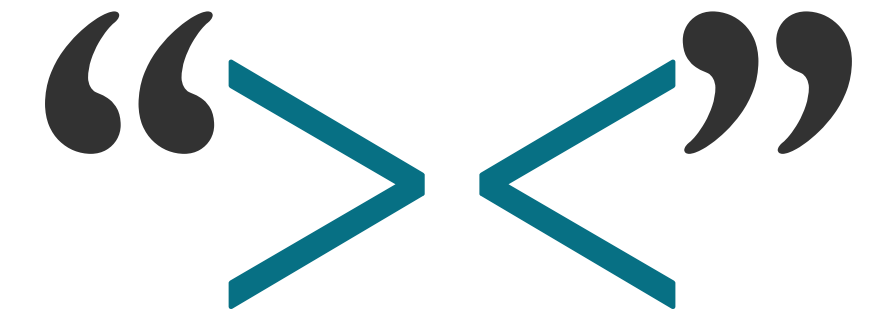
Legal
Sharad N. Darji



No conditions apply...

You live a life without limits of luxury at Aarohi Crest. From clean green environs to gorgeous living spaces, from architectural marvels of interior designing to ever thoughtful set of amenities to keep the entire family happy.

Aarohi
Crest



No greater glory than...

To accomplish a goal closer to your heart than any other... to bring to your family home to a space that answers to every comfort they deserve & luxury they can dream of.

Drive home to a standard of living that shall set benchmarks of life style at Ahmedabad.

Aarohi Crest demands attention and commands a position on pedestal of grandeur!



Aarohi Crest

When a house spells peace of mind, prosperity, harmony, and cheers of happiness, it becomes more than a home. It becomes a living abode.

Aarohi Crest is that living abode erected with these spells of happy life laid at its foundation. It portrays auspicious life conferred with the elements of decent lifestyle and distinct class. Aarohi Crest is the dwelling of modern age with contemporary architecture to reflect the up-style and status of the inmates.

Aarohi Crest is not about housing, it's about living, living with all the goodness and richness of life. It is the charm of good living!



Layout Plan

18.00 MT. WIDE ROAD

18.00 MT. WIDE ROAD



“0%”

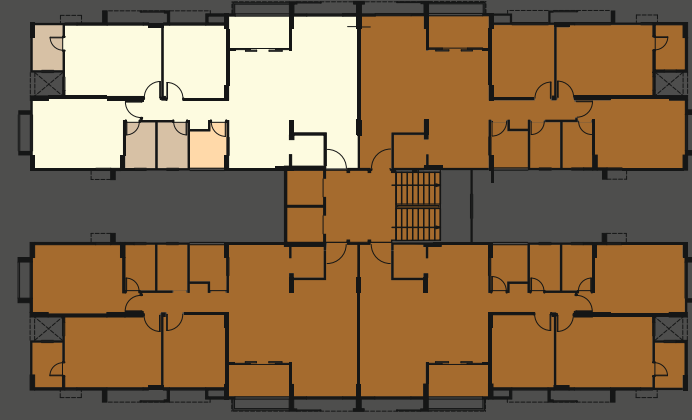
Cent percent sense of splendor

The world of luxury and elegance await your arrival at Aarohi Crest, guaranteeing you glorious lifestyle and 100% peace of mind!

As you come and explore Aarohi Crest, the expressions of happiness will dance around you...



Unit Plan



Carpet Area : 1242 sq. ft.
 Built up Area : 1485 sq. ft.
 Super Built up : 2025 sq. ft.

“@”

Threshold of the happening location and great sense of security.



Specification

- ⊙ R.C.C frame Structure with external periphery wall built in brick masonry
- ⊙ Internal mala Plaster with lapi finish and external double coat sand face plaster with water proof acrylic paint for exteriors. Some exterior walls will be Textured.
- ⊙ Vitrified tiles flooring in all areas. Kota stone in the wash area. Ceramic tiles in balcony.
- ⊙ Colored glazed tiles dodo up lintel, good quality sanitary ware with C.P. fittings
- ⊙ Granite (sandwich type) platform along with stainless steel sink
- ⊙ Fully glazed color anodized aluminum window
- ⊙ Wooden frame in all doors, decorative main door, all other doors will be flush doors
- ⊙ ISI standard Three phase concealed copper wiring with sufficient electric points in all rooms.

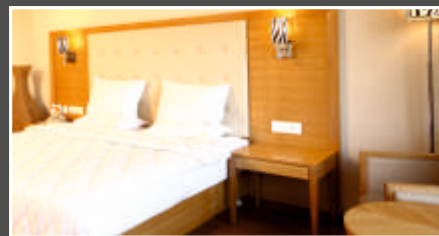
Location

- ⊙ Located in a prime and pollution free residential area of Ahmedabad
- ⊙ Close to AUDA's 200 ft. Ring Road off South Bopal
- ⊙ All amenities & facilities like grocery, stationary, chemist, vegetable vendors, schools, hospitals and petrol pump are in vicinity
- ⊙ Adjacent to well known malls & multiplexes
- ⊙ Renowned schools such as DPS, Shiv Ashish, Tulip, Sanskar Dham, Eklavya, Swastik, St. Anne & Homeopathic College & Krishna Heart etc. are located nearby

LIVE LIKE A STAR AND EXPERIENCE THE ECSTASY OF A STARRY LIFE ONLY AT STARZ!



FEATURES & AMENITIES:



PREMIUM & SUITE ROOMS



SWIMMING POOL



GYMNASIUM



DISCOTHEQUE

Starz Club & Spa, the only RCI affiliated premium club in Ahmedabad that provides you with regal facilities in a royal ambience. It is a place where you can have hot parties, cool weekends, warm get-together amidst beautiful environs coupled with state of the art amenities. No matter whether you want to watch a movie in your own personal theatre or just crave for a sumptuous seven-course meal while floating on water, Starz has it all!



CLUB: Aarohi Greens, Nr. Adi Finechem, Sanand Kadi Road, Chekhla, Ahmedabad - 382 110. M: +91 90990 49173 / 74
www.starzclub.in | facebook.com/starzclub



Amenities

- | | | |
|------------------------------|-----------------------------|-----------------------------|
| 1) Children Drop of Zone | 8) Children Park & Sand Pit | 15) Hobby Center |
| 2) Water Body, Fountain | 9) Indoor Game Area | 16) Car Wash |
| 3) Baby Sitting | 10) Multipurpose Hall | 17) Badminton/Cricket Pitch |
| 4) Business Center | 11) Board Game | 18) Volleyball |
| 5) Skating Area | 12) Out Door Game | 19) Event Lawn |
| 6) Aerobics/Yoga/Stretaining | 13) Elder sitting | 20) Jogging Track |
| 7) Gymnasium | 14) Library | 21) Driver's Lounge |