



VTPOne

Smart 1 BHK homes | Kharadi



# One Soul. One Mind. One Place.

Smart 1 BHK homes,  
coming soon  
at Kharadi, Pune

The first experience of buying something is always special. And so will your first home-buying experience with us will be. Come and experience our new residential offering at Kharadi. An exclusive tower of 1 BHK well-designed homes that are planned to give you good-sized rooms inside and thoughtful amenities upside, inviting you to experience oneness with all that is, called living in joy.

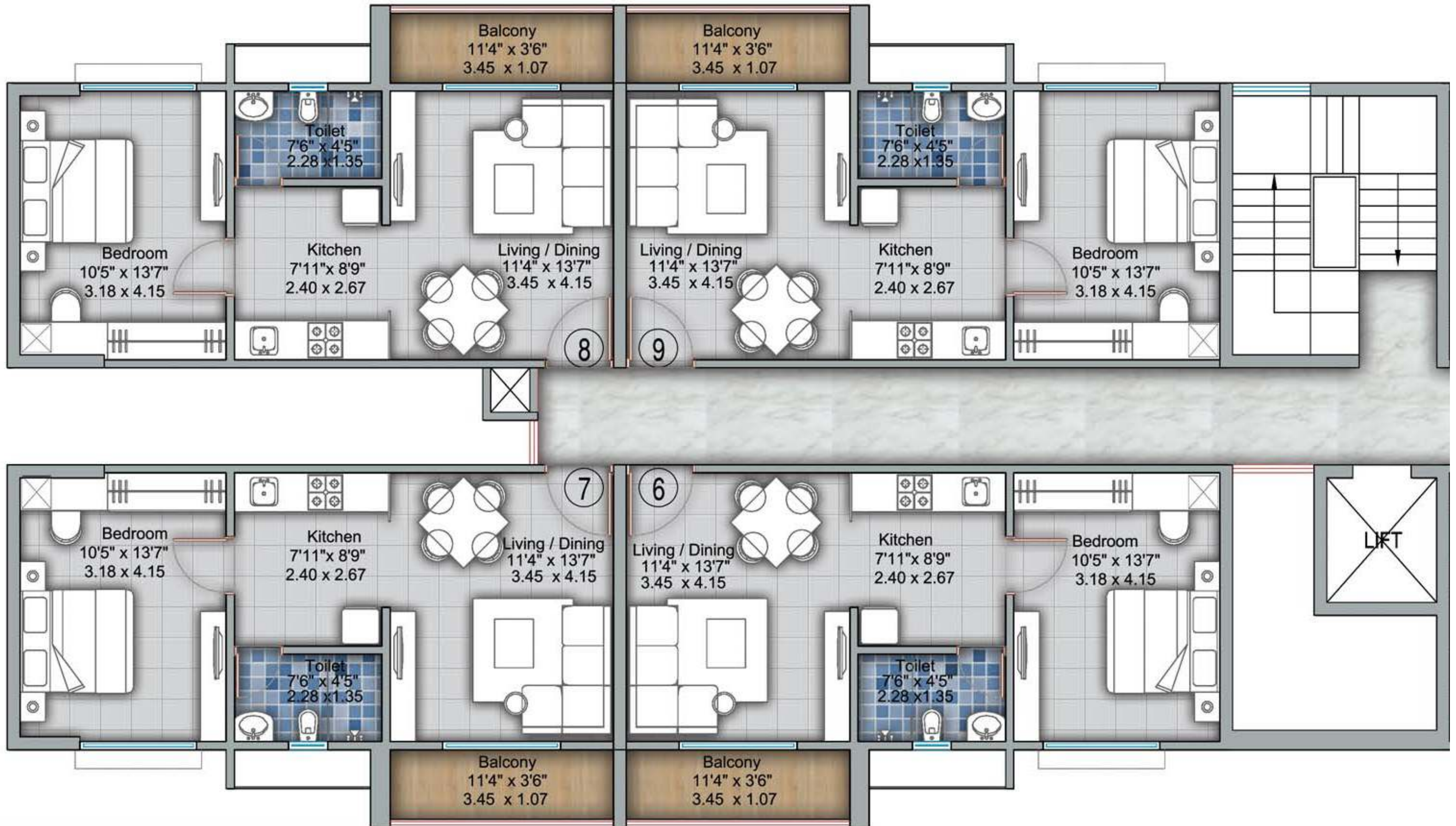
# Rooftop terrace is the signature element of this tower.

Outdoor and recreation space being sited on the rooftop terrace is the signature element of this tower. You can relax and be in oneness of your soul while you enjoy your swim, jog or work-out on the beautifully landscaped garden, as there is none overseeing you. Be it the community parties or society meetings, everything will be moved up to the rooftop, ensuring you soothe your eyes with the skyline views.

We invite you to this wonderfully crafted residential community, coming up soon in Kharadi.



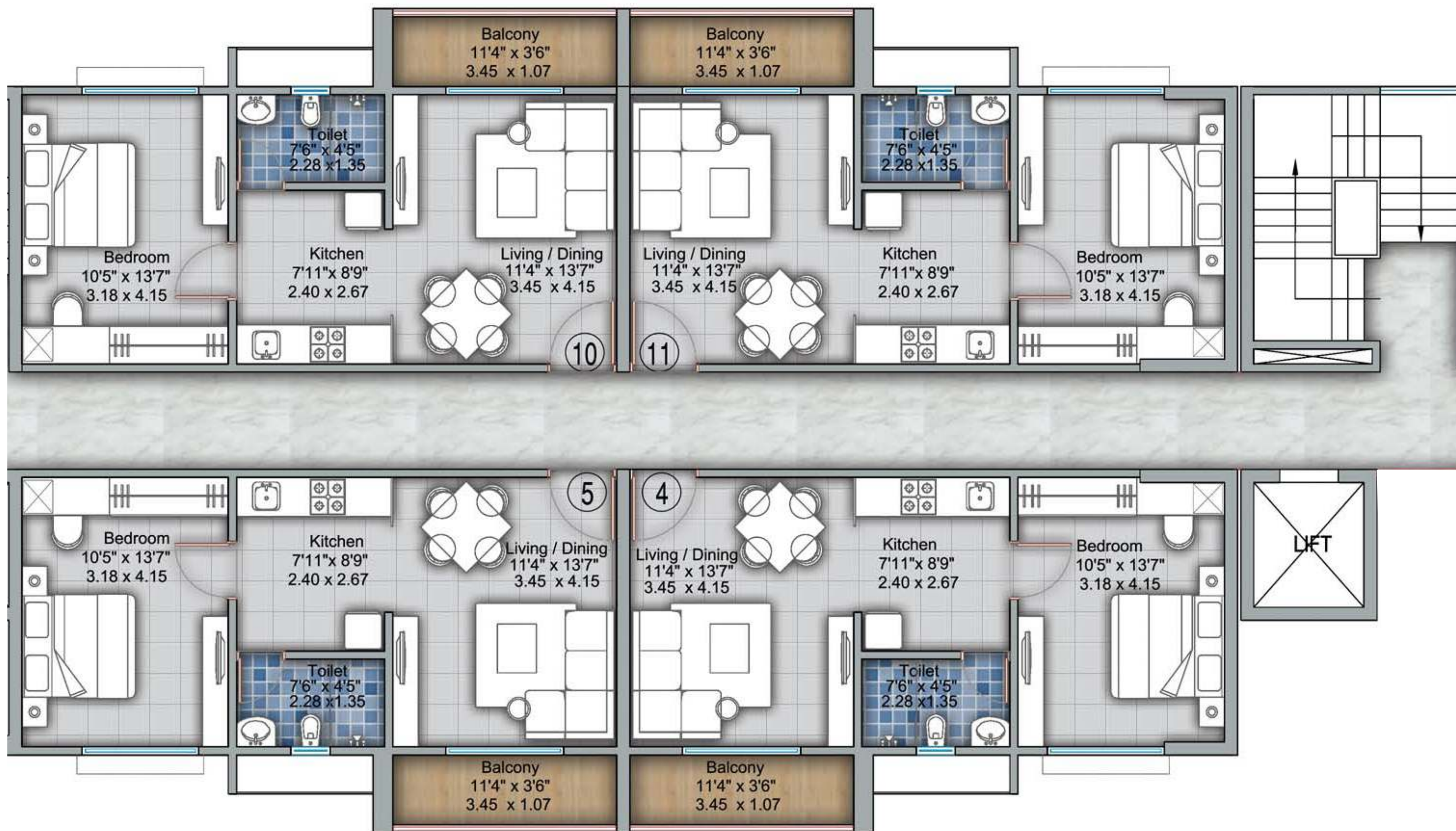




FIRST FLOOR PLAN

Flat No.: 6, 7, 8 & 9

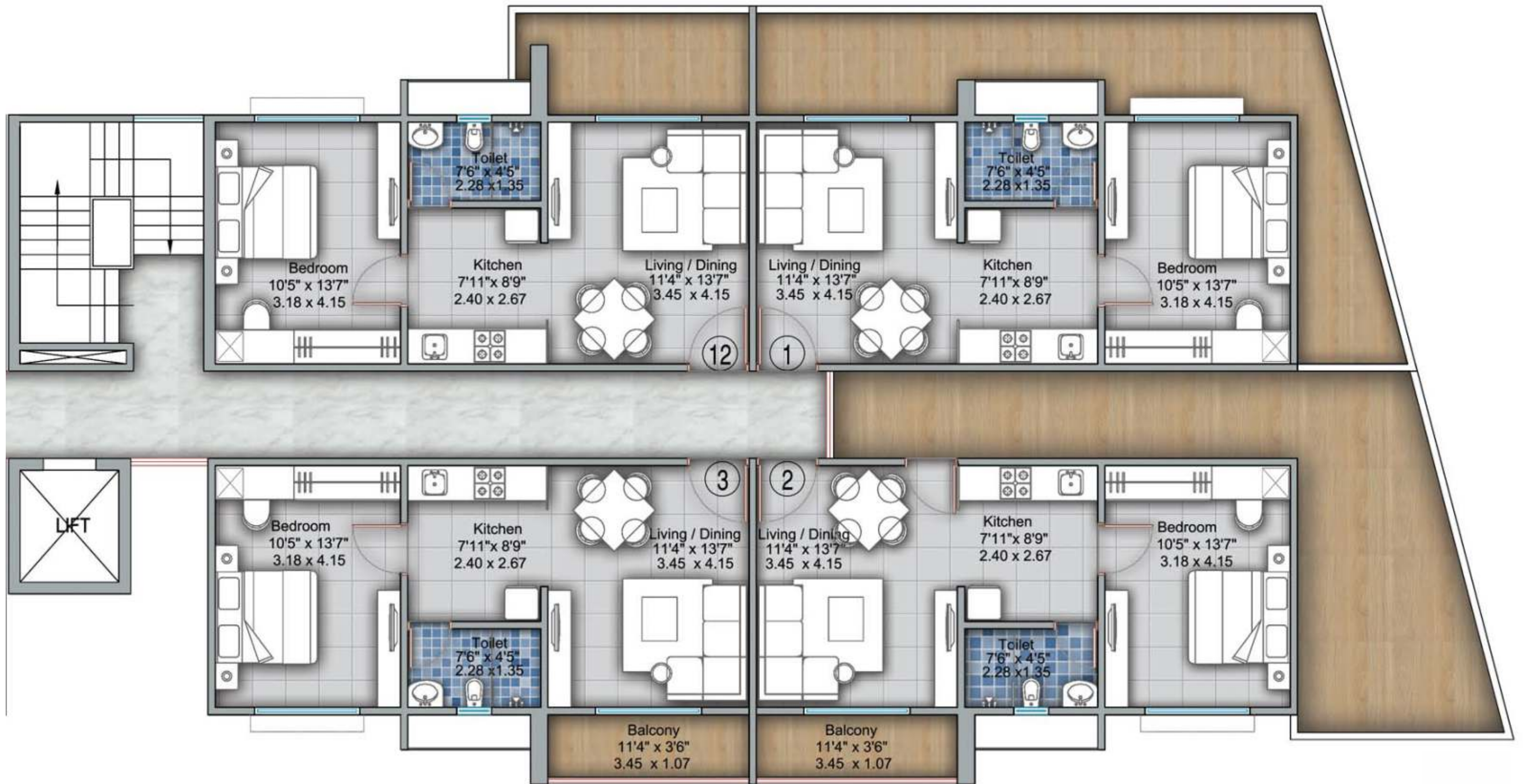




FIRST FLOOR PLAN

Flat No.: 4, 5, 10 & 11

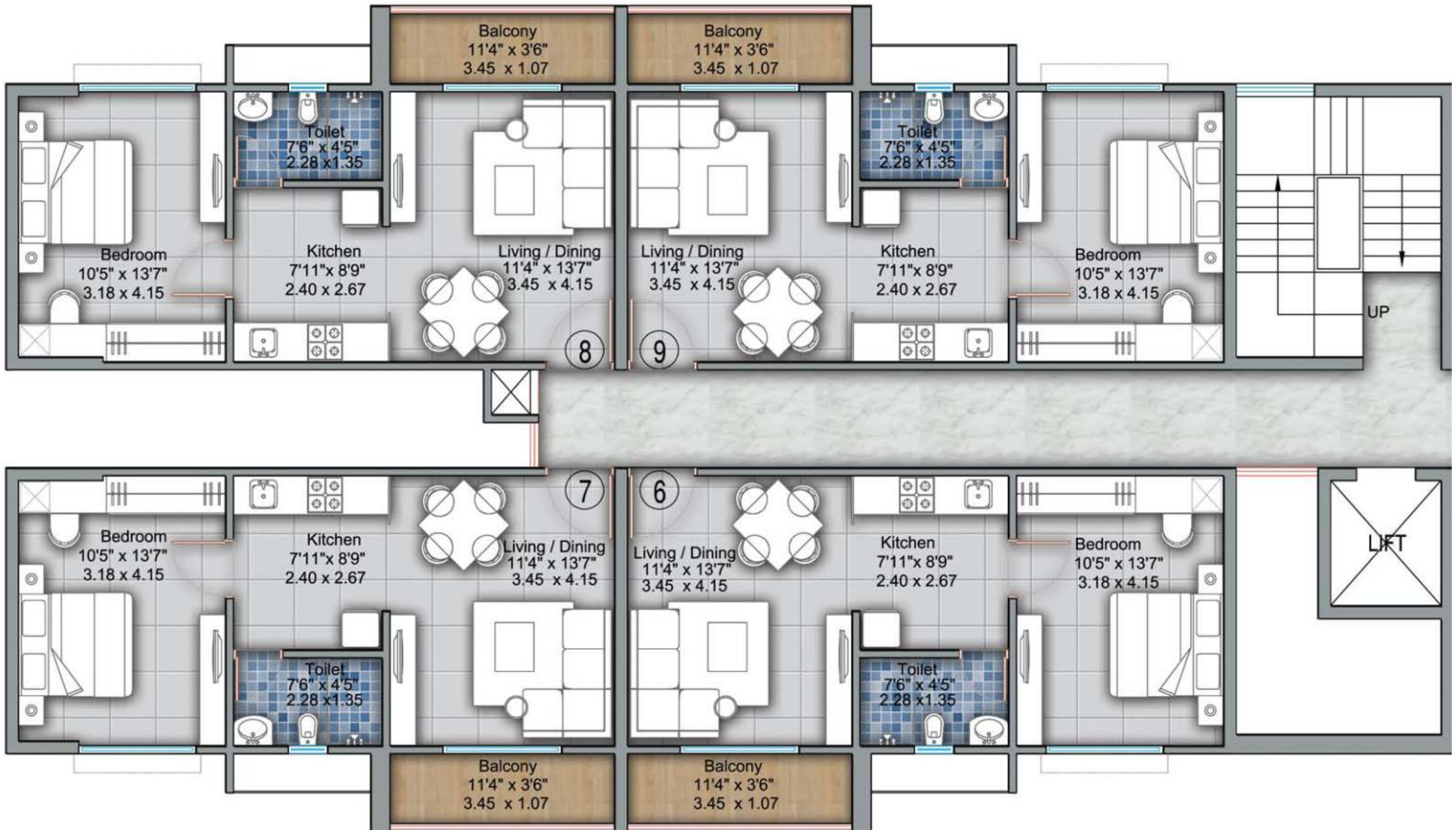




FIRST FLOOR PLAN

Flat No.: 1, 2, 3 & 12

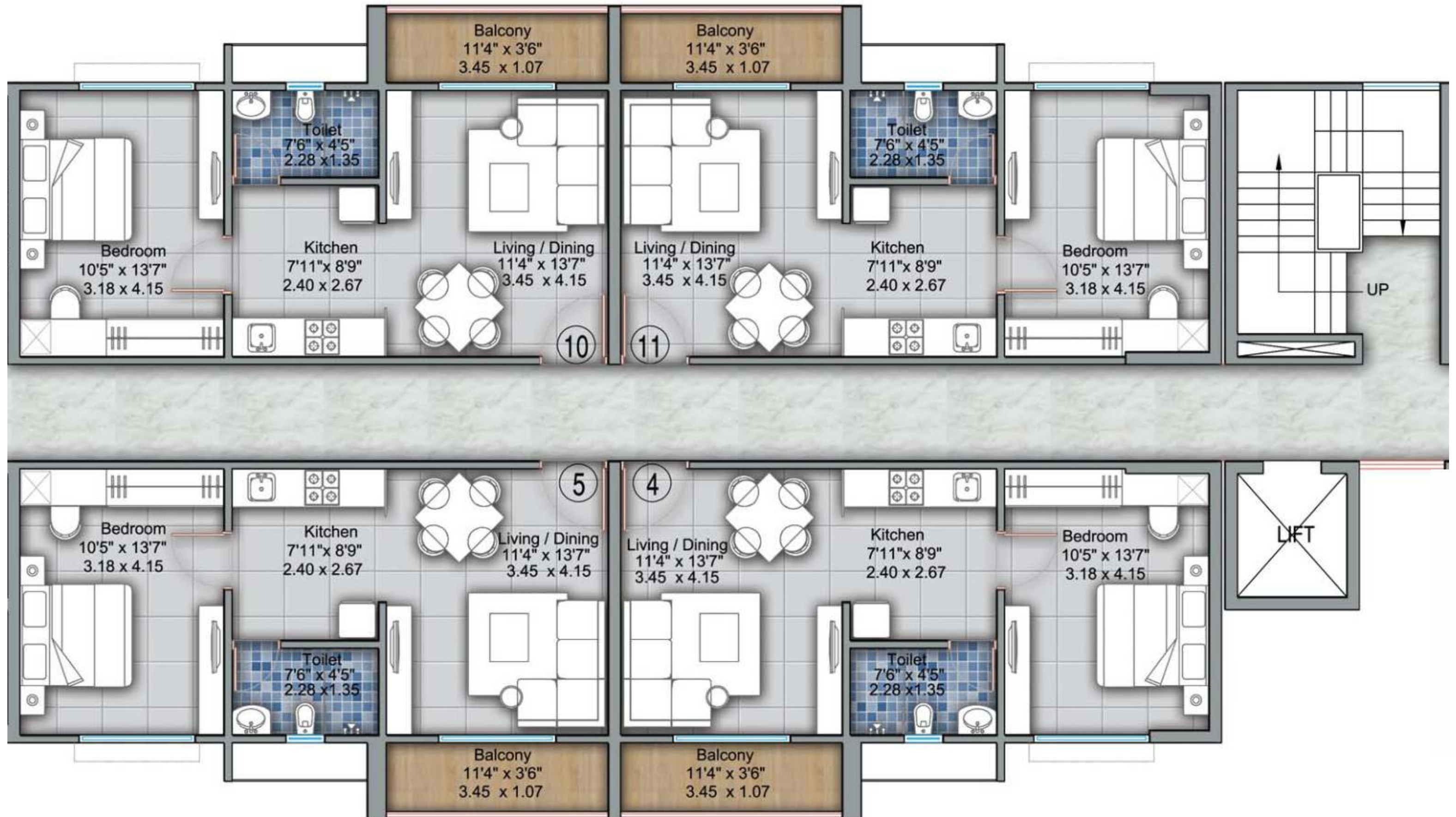




2nd, 3rd, 4th to 5th FLOOR PLAN

Flat No.: 6, 7, 8 & 9

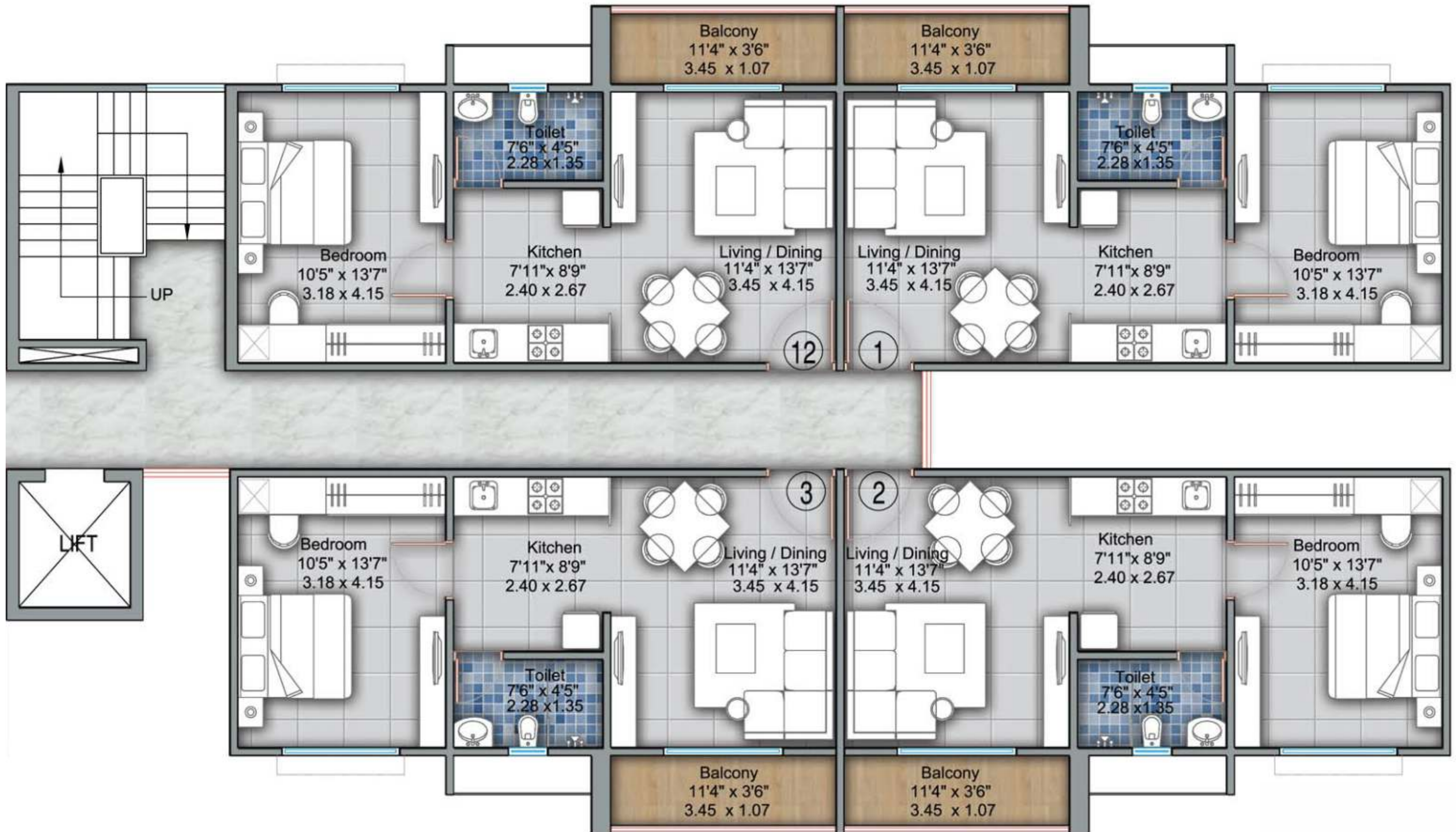




2nd, 3rd, 4th to 5th FLOOR PLAN

Flat No.: 4, 5, 10 & 11

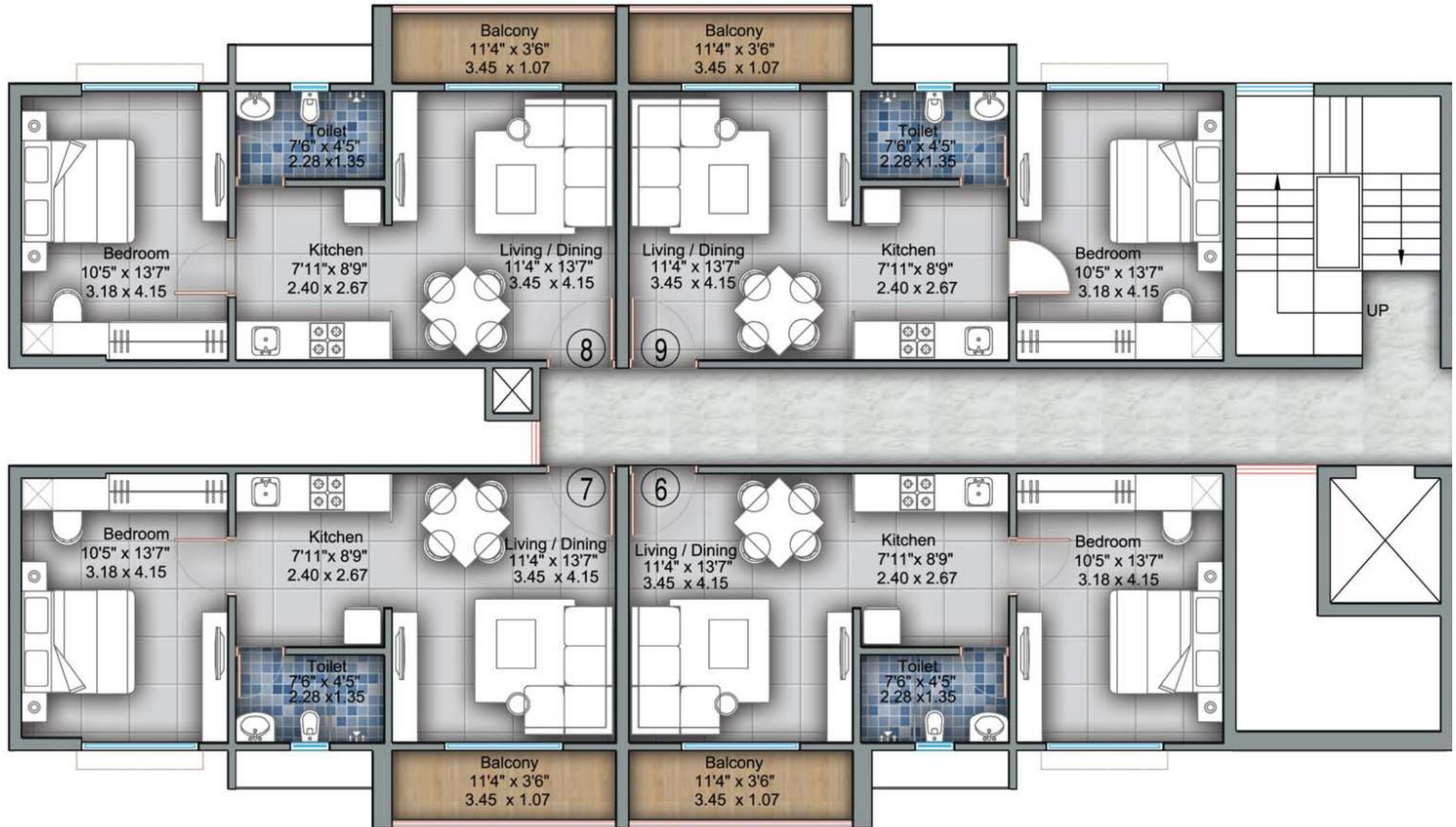




2nd, 3rd, 4th to 5th FLOOR PLAN

Flat No.: 1, 2, 3 & 12

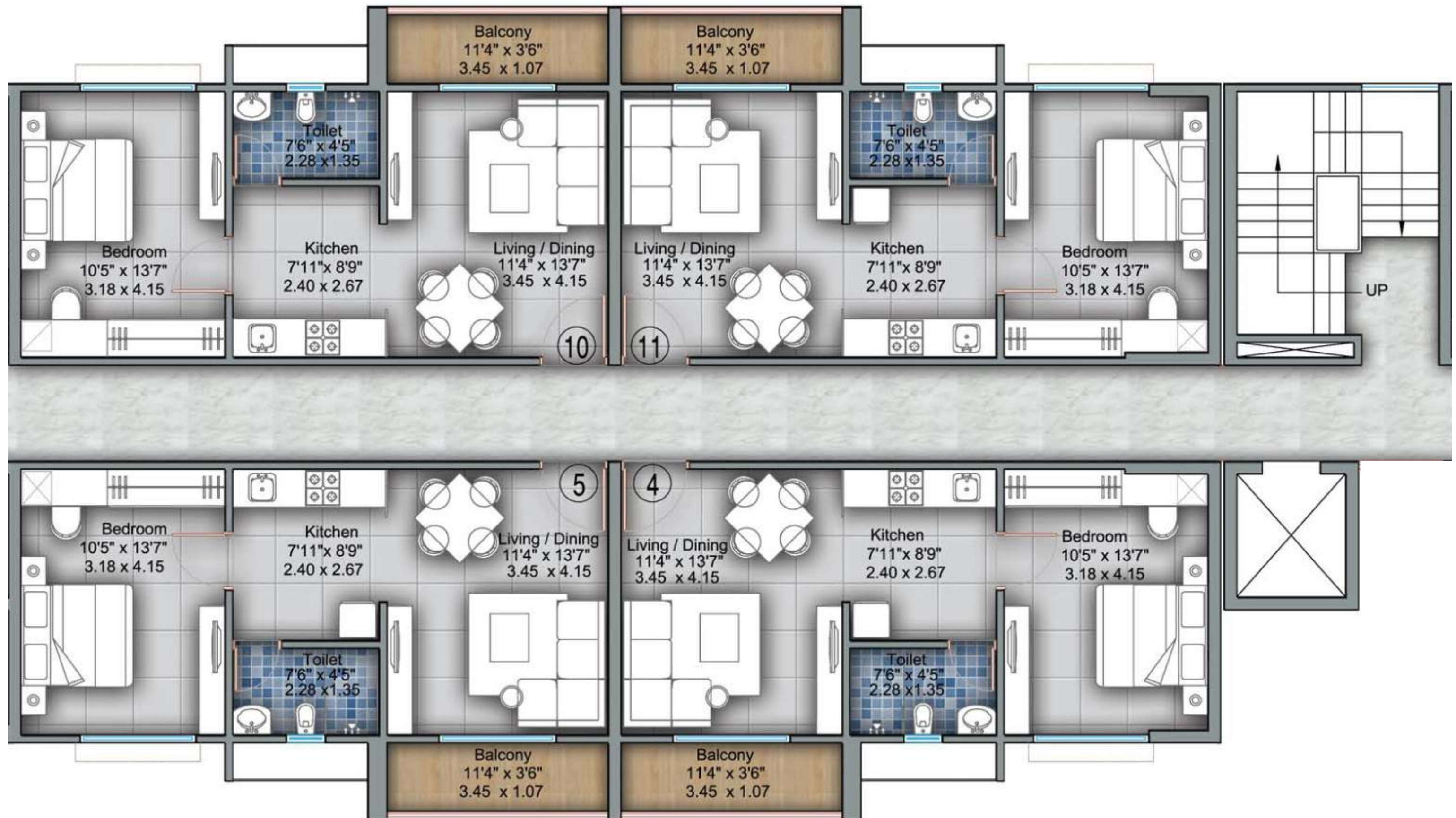




6th FLOOR PLAN

Flat No.: 6, 7, 8 & 9

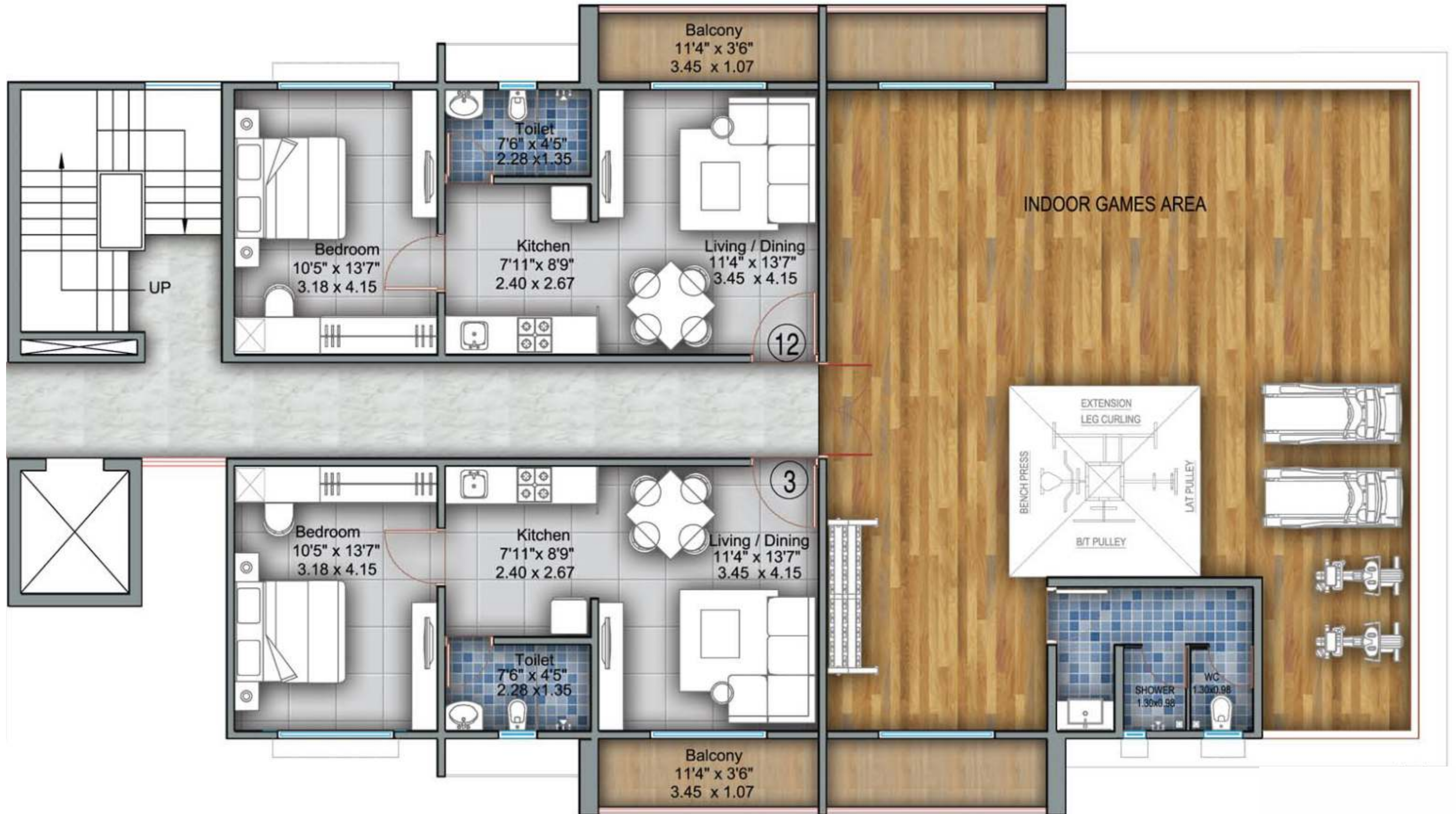




6th FLOOR PLAN

Flat No.: 4, 5, 10 & 11

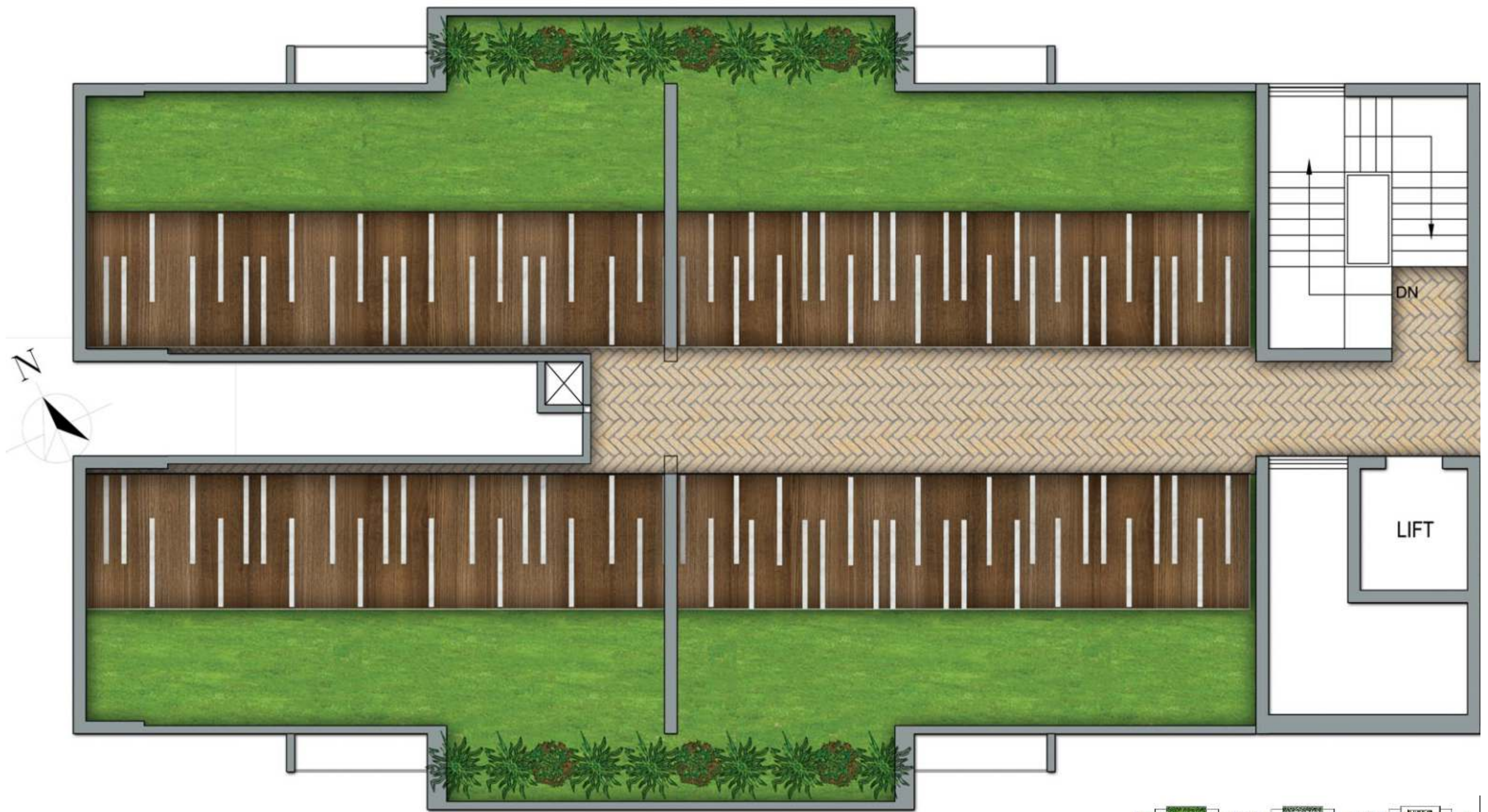




6th FLOOR PLAN

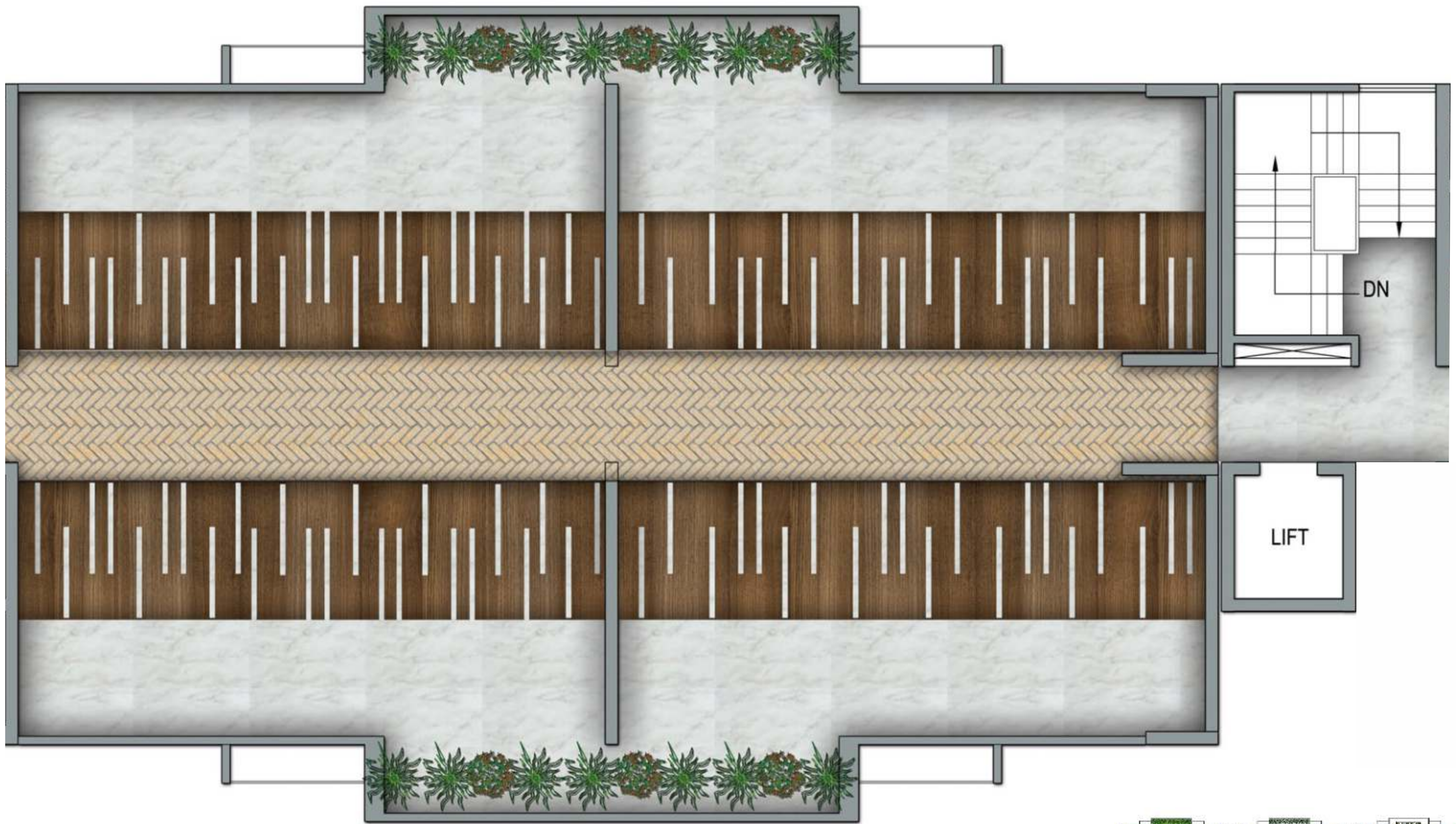
Flat No.: 3 & 12





TERRACE FLOOR PLAN

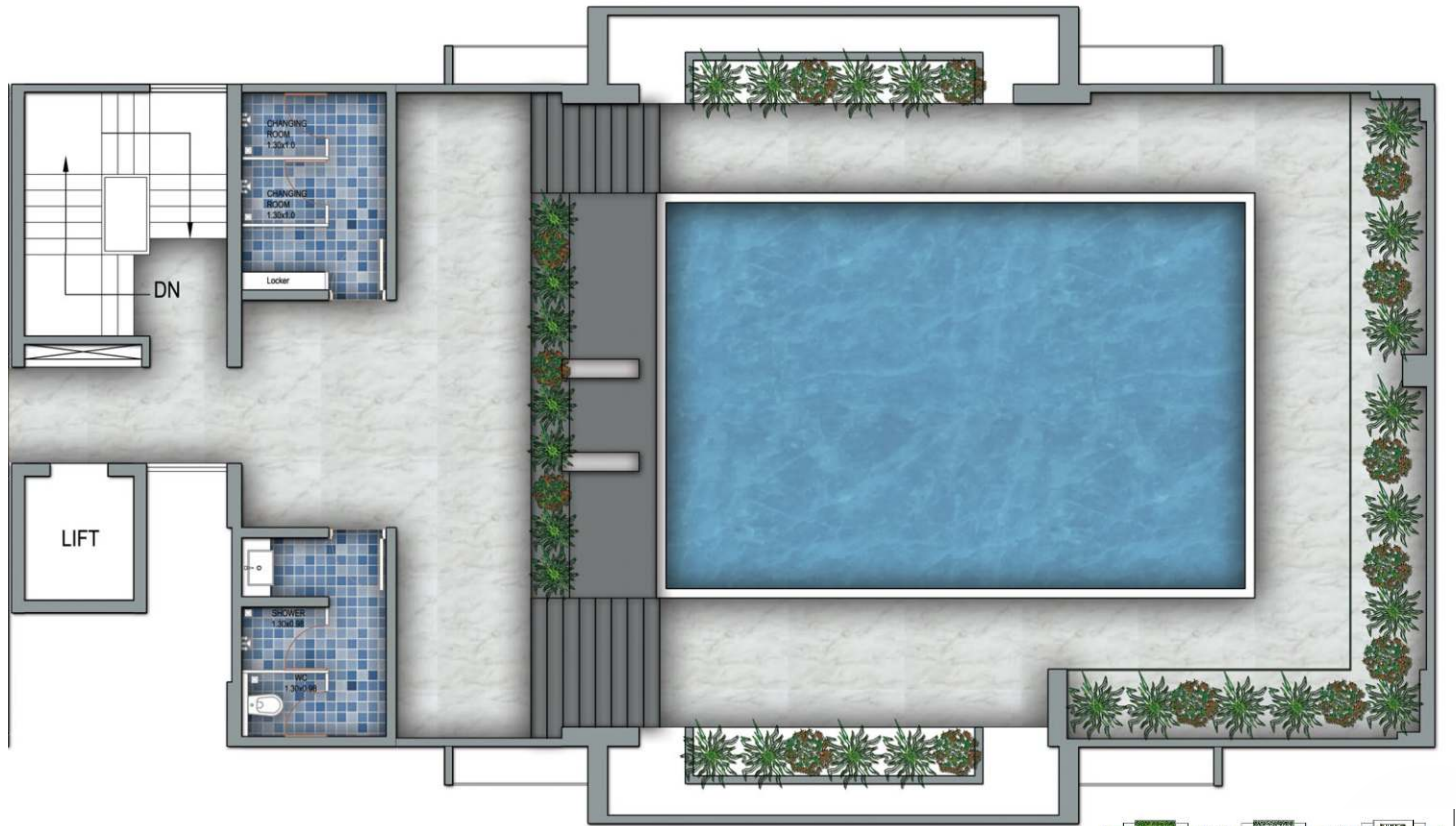




TERRACE FLOOR PLAN



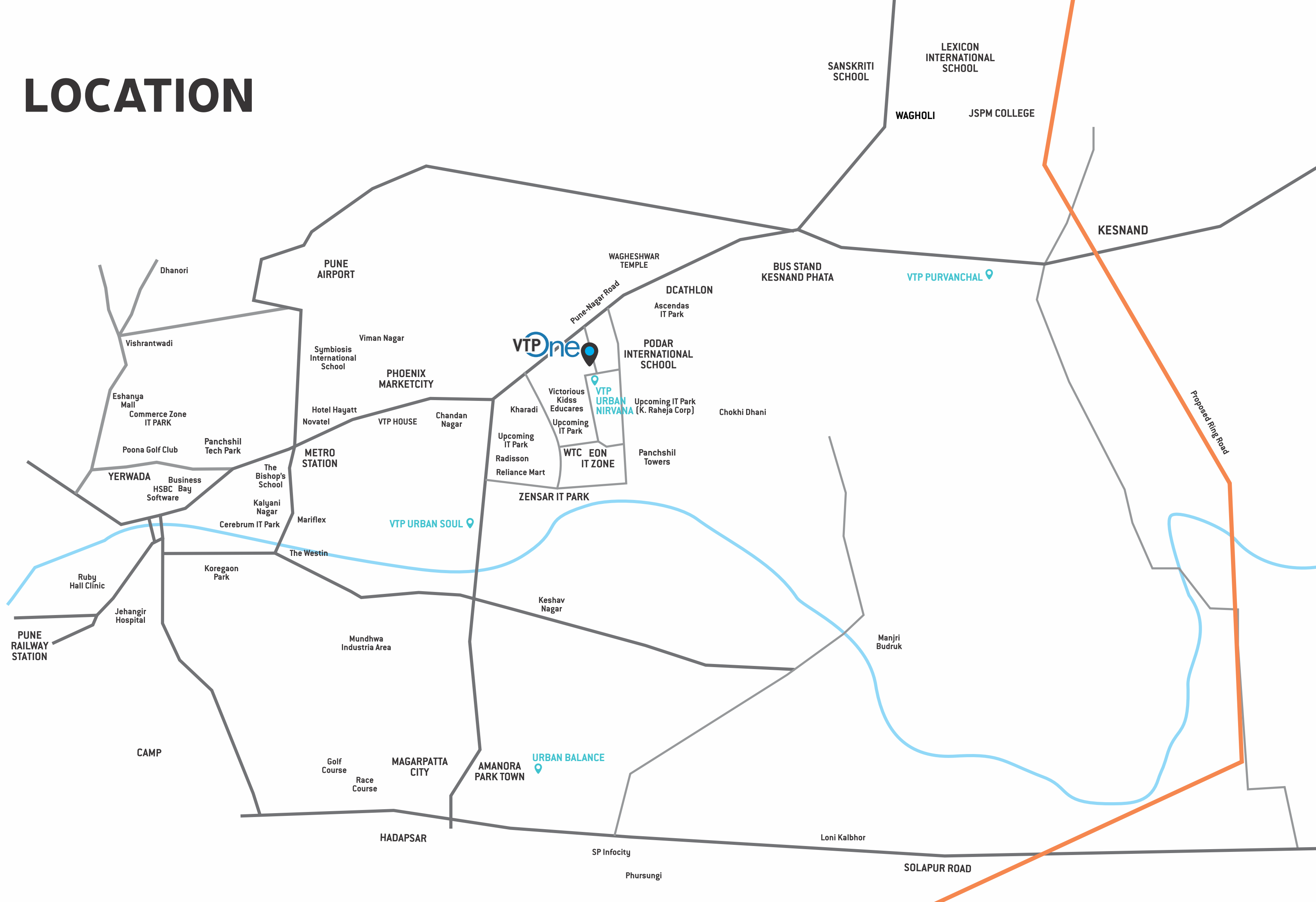




TERRACE FLOOR PLAN



# LOCATION





# LOCATION

As VTP One is strategically located in the heart of Kharadi and is walkable distance from the surrounding IT companies. A solid infrastructure and proximity to everything conceivable is what makes this location an obvious choice. It is well connected to Sanaswadi and Ranjangaon MIDC. Not just the daily conveniences, but all sorts of luxuries, entertainment are within your reach.

## EASY DRIVING DISTANCES



### IT & INDUSTRIAL HUBS

- EON IT Zone, World Trade Centre, Zensar IT Park, Mantri Tech Park & K. Raheja (upcoming IT park): 3 mins.
- Magarpatta IT Park: 20 mins.
- Panchshil Tech Park: 15 mins.
- Raheja Commerzone: 20 mins.
- Ranjangaon Industrial Estate having companies like LG, TATA, Fiat, Whirlpool, 3M: 40 mins.



### EDUCATION

- Lexicon International School: 15 mins.
- Sanskriti School: 15 mins.
- Victorious Kidss Educares: 3 mins.
- Podar International School: 10 mins.
- The Bishop's School: 15 mins.



### HEALTHCARE

- Care Hospital, Wagholi: 10 mins.
- Lifeline Hospital, Wagholi: 10 mins.
- Columbia Asia Hospital: 12 mins.



### RESTAURANTS

- Hotel Kaveri: 10 mins.
- Shangri-la: 10 mins.
- Hotel Radisson Blu: 10 mins.
- Hyatt: 10 mins.
- Novotel: 10 mins.



### SHOPPING & ENTERTAINMENT

- Reliance Mart: 10 mins.
- Phoenix Market City Mall: 15 mins.
- Amanora Mall: 20 mins.
- Seasons Mall: 20 mins.



### AIRPORT & RAILWAY STATION

- Airport: 15 mins.
- Railway Station: 30 mins.





**MahaRERA Regd. No.: P52100015407**

Site Address: VTP One, S.No. 56/1B+2A+6A/1, Kharadi, Pune  
sales@vtprealty.in | www.vtprealty.in



**Corporate Office:** VTP House, Near Phoenix Mall, Nagar Road, Pune - 411 014.

**Mumbai Office:** 222, Trade Centre, BKC, Mumbai - 411 001.

Disclaimer: Every reasonable care has been taken while preparing this brochure. However, the developer/promoter and its agents shall not be held responsible or liable for any inaccuracy in its contents. All representations are believed to be correct and as envisaged by the developer/promoter. However, since the project is under evolution there is a possibility that, there may be certain changes in the representations made in this brochure. All art renderings, illustrations, photographs and pictures contained in this brochure are an artist's impression only and the same should not be construed to be the final images / views of the final project. The common facilities and amenities shall be available for the entire project and will be developed in a phase-wise manner, over a period of time in case of large layouts. The printed material does not constitute a contract/offer of any type between the developer/promoter and the recipient. Exact details related to the project shall be enumerated in the sale and purchase agreement that shall be entered into between the developer/promoter and the purchaser and shall supersede all statements, documents or representations made prior to signing of such sale and purchase agreement. Detailed explanation of architectural projection, enclosed balcony, open and closed terrace shall be provided by the sales team upon site visit.

