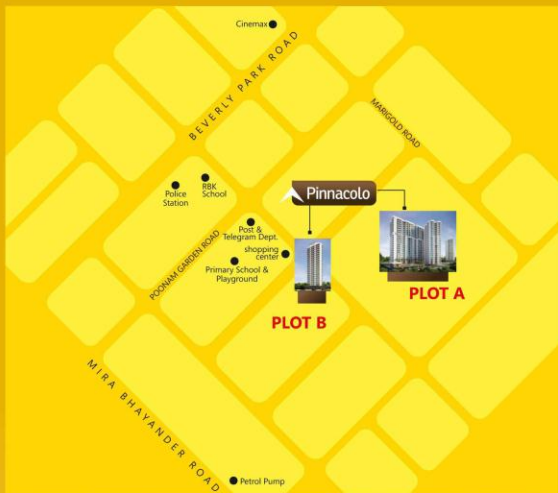


**YOUR  
LIFESTYLE  
REACHES  
A NEW HIGH**

**LOCATION MAP**



Project Developed by :



Site:

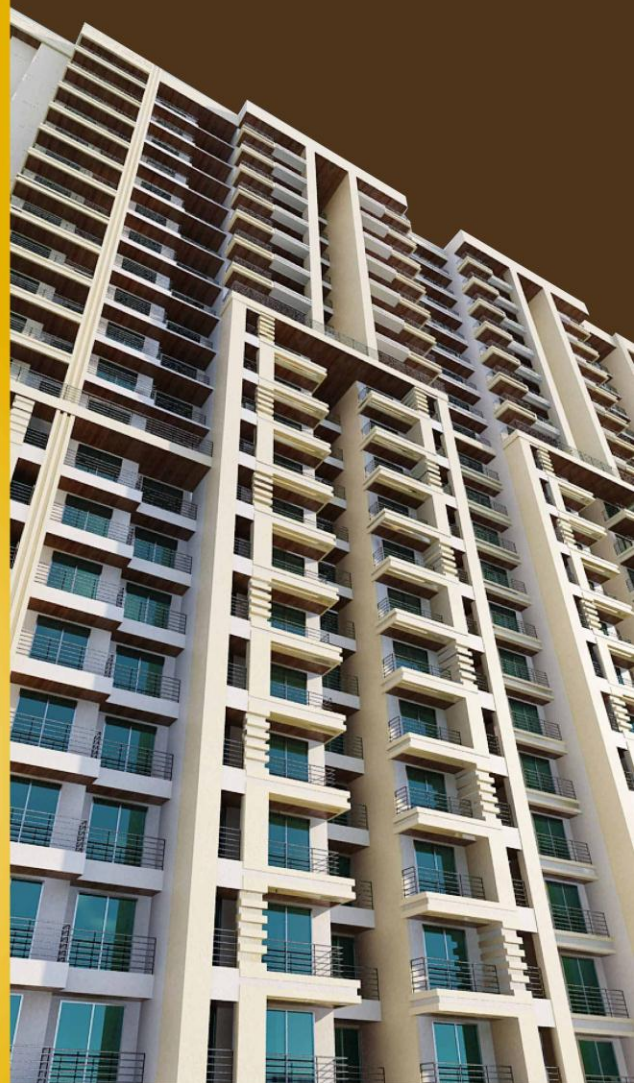
Pinnacolo, Near Gaurav Residency, Phase II,  
RBK School Lane, Beverly Park,  
Off Mira-Bhayandar Road, Mira Road (East), Thane-401107.  
[www.pinnacolo.in](http://www.pinnacolo.in)

A Joint Venture Between :



Design Architects :  
**Reza Kabul**

Note : \*The developers reserve the right to change plans, specification and features without prior notice or obligation, at their sole discretion.  
\*Dimensions mentioned in British systems for users ease. Conversion - 1 SMT = 10.764 sq.ft. 1 RMT = 3.28 ft.  
\*Specification, write up, internal layout, pictures shown in this booklet are only indicative.



**LIVE**

**LEISURE  
OPULENCE  
COMFORT  
YOUR FUTURE**



# LIVE THE HIGH LIFE AT MIRA ROAD

## Pinnacolo

The dream of being exclusive is now a reality. Where you live speaks volumes about your social status and to live a life of luxury is a desire everyone would like to achieve.

Dimple's Group & Kanungo Group now brings to you Pinnacolo where all your desires can now become a reality. The 22 storeyed magnificent towers will be one of the highlights in the Mira Road skyline. Enter this oasis of luxury and you will be able to experience world class design philosophy & features while the luxurious & spacious 1, 1½, 2, 3 BHK apartments treat you to an environment of opulence and calm.

Located at the promising address of Mira Road, one of the upcoming addresses of Mumbai, Pinnacolo is strategically located to make it convenient for everyday travel. With superior infrastructure coming up in the vicinity, it is truly an exquisite place to call home.

The high life is all about living with an experience which matches your personality and gives you a lifestyle you always wanted. Pinnacolo is your answer to the high life you have been waiting for.

Welcome to Pinnacolo!





## THE HIGH LIFE FEATURES



- A/C in all the Bed Rooms
- Swimming Pool
- Club House & Fitness Centre with Steam, Sauna & Jacuzzi
- Podium Garden
- Well designed Elegant Entrance lobby

# HIGH LIFE APARTMENT SPECIFICATIONS



- Elegant granite platform with S. S. Sink & ceramic tiles dado upto 7' height in kitchen with service platform.
- Designer ceramic tile flooring & dado in bathroom.
- Concealed plumbing with Branded C.P. fittings like Jaguar or similar.
- Concealed copper wiring with adequate power points in each flat with modular switches and provisions for TV & telephone points.
- Elevators of reputed brand.
- High Tech security systems with Video door phone.
- Solid RCC frame structure design as per seismic zone III Standards.
- Paved compound with landscape garden.
- Modular Kitchen





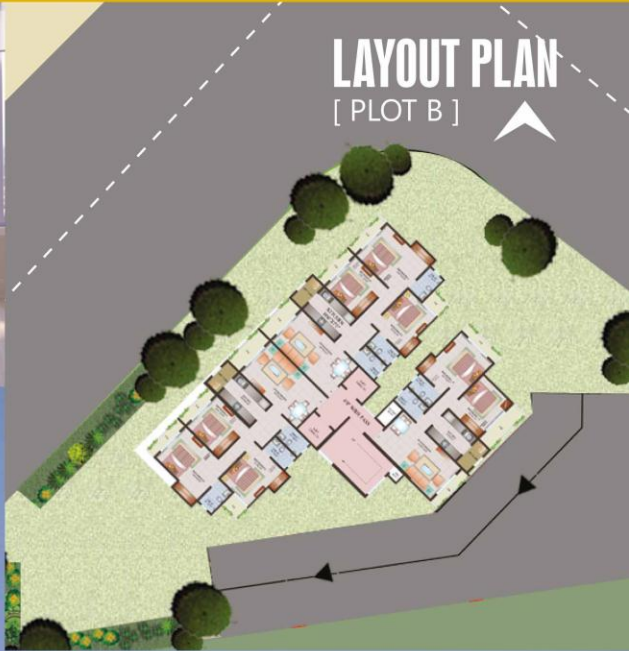
# LAYOUT PLAN

[ PLOT A ]



## YOUR LIFESTYLE REDEFINED



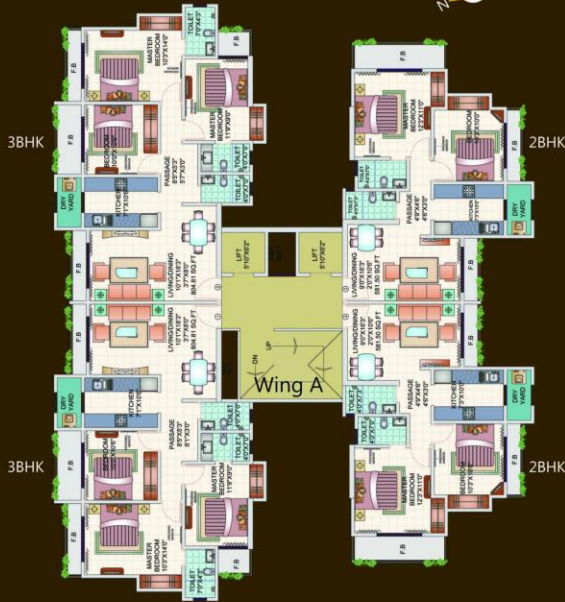


# HIGH LIFE LIVING



# FLOOR PLANS

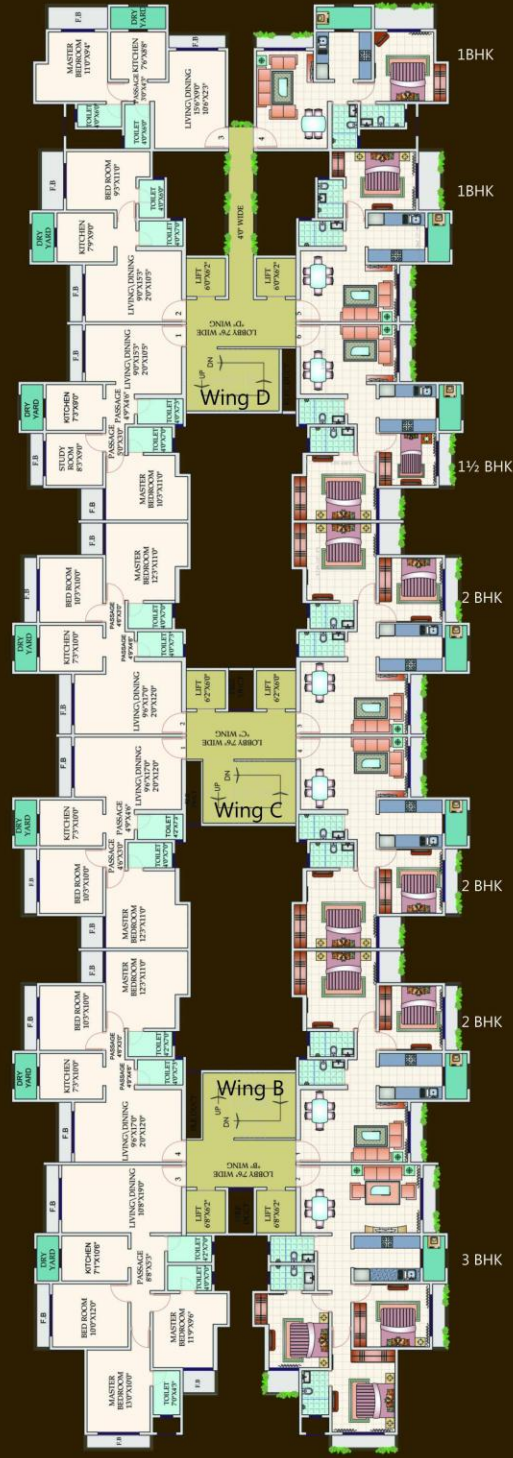
PLOT-A



PLOT-B



PLOT-A





# PROJECT PARTNERS



## DIMPLE REALTORS PVT. LTD.

As a symbol of trust & quality in the building & construction industry, Dimple's Group, laid its founding stone in the year 1998. Since then, it has built a reputation of creating lifestyle projects across Mumbai's landscape while adding more glamour to the city's skyline. Dimple's Group is a respected real estate firm having a well established base with quality construction and is scaling new heights with every venture. The respect has been earned by the work ethic followed, which is an integral aspect of the company's core values.

Meticulous planning, timely completion and architectural innovation across diverse projects add to the repute.

Incorporating a luxurised lifestyle and invoking a sense of pride to over 1,000 happy families, in their modern creations, the Group has made a name in both, the budget and luxury homes sectors.

Another first for the Group is La Senza, a commercial project which is another milestone for a company that specialises in developing residential projects.

Super-Con Enterprises and Dimple Creations are the two business entities of Dimple's Group. They have already developed 1 million sq. ft. of projects with 7 1/2 lakh sq. ft. in the pipeline. From the last financial year, the growth rate of Dimple's Group has gone up by 130%.

Dimple's Group is ever evolving towards the future, to bring its customers sheer delight along with a one of a kind living experience.



## KANUNGO GROUP OF COMPANIES

are one of the reputed and reliable Builders & Developers of Real Estate properties in Mumbai and its suburbs and are known for their dependable quality construction, timely possession deadlines and customer care. The company was formed in 1991 and is known for its meticulous styling and attention to detail. The group was once associated with Lodha Group and



developed several projects in Bhayander, Mira Road, & Nallasopara. It has successfully completed "KANUNGO ESTATE" a project of 450 flats at Mira Road. The recently completed "SHREEPATI" at shantinagar, Mira Road (E) a project of 405 flats and shops. "KANUNGO'S GARDEN CITY" near Mira - Bhayander Road is our ongoing prestigious project having 2 wings of Stilt + 14 and 8

wings of Stilt +21 storey tower. It comprises of 1-2-3 BHK Apartments along with a shopping plaza while having modern amenities such as a club house & swimming pool. "DHRUV LOGISTICS PARK" at Taloja is a warehousing project recently undertaken by the group. KANUNGO GROUP is focused on establishing an unrivaled reputation for excellence and achievement by ensuring that each project is the product of perfection.



**YOUR  
LIFE AT**

 **Pinnacolo**

