



**VSPL**  
Space Redefined

# *Crescent* *Welcome Home*

1, 2 & 3 BHK Residential Apartments  
at Yeshwanthpur, Bengaluru







The best journey takes you home and a pleasing journey brings you to Crescent. A place where one's life journey begins with sharing memories! Your hunt for a dream home nestled in the heart of the city ends here.

This G+3 storeyed residential apartment could spoil you for choice. With 49 units spread over 22,690 sq.ft. VSPL Crescent provides you top-notch quality construction designed to best global practices. There might be millions of reasons for you to choose us, but we just have one reason for you to take it up – A home of unmatched comfort and exclusivity.

## PROJECT AMENITIES

- Kid's Play Area
- CCTV in the Common Areas
- 24-hour Power Backup
- Wi-Fi Capability
- Intercom to all Apartments

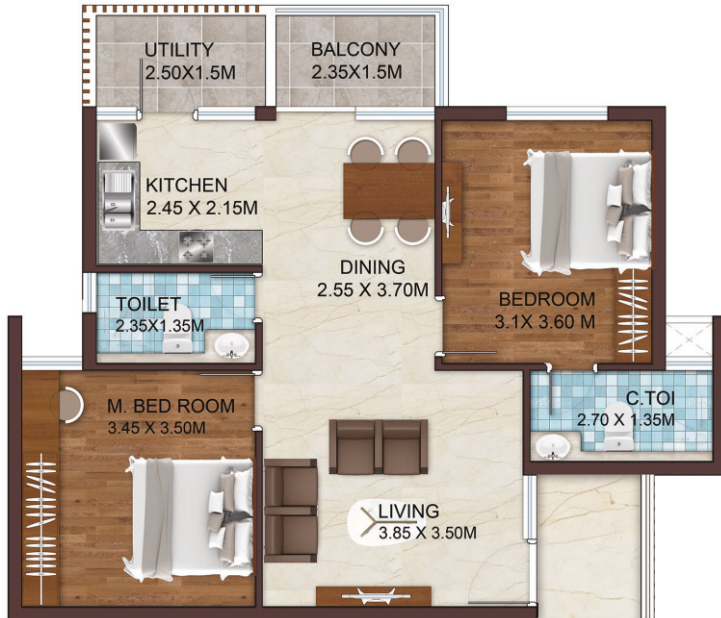
## GROUND FLOOR PLAN



## TYPICAL FLOOR PLAN



## FLOOR PLANS



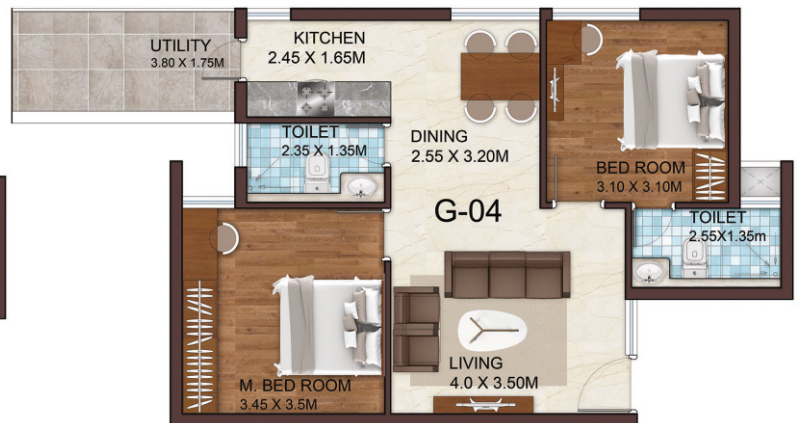
**TYPICAL FLOOR**  
CA : 646 SQFT



**TYPICAL FLOOR**  
CA : 640 SQFT



**GROUND FLOOR**  
CA : 605 SQFT



**GROUND FLOOR**  
CA : 605 SQFT



Seasoned in the market for almost a decade, our evolution from contractors in 2008 to individual project builders presently, in core housing has been quite enthralling. Our vision of offering value to the customers by continuously striving towards innovation and excellence has paved our path towards success.

We help build little dreams in the form of homes and do our best to keep our customers trust intact on us. We aspire to keep building quality & investor-friendly homes.

A HOME IS MORE THAN FOUR WALLS AND A CEILING. IT'S THE FEELING OF SAFETY AND WARMTH YOU GET WITHIN THOSE WALLS. AND THAT IS WHAT VSPL PROMISES.



#### LOCATION ADVANTAGE

- 🚶 2 mins walk to Vaishnavi Sapphire Mall
- 🚶 2 mins walk to National Public School
- 🚶 4 mins walk to Yeshwanthpur Metro Station
- 🚶 5 mins walk to Yeshwanthpur Railway Station
- 🚶 2 mins walk to Hospitals & ATMs
- 2.5 Kms to Orion Mall

#### SITE ADDRESS

10/1, Pipeline Road, (Previously BWSSB Road), Near Shell Petrol Bunk, Yeshwanthpur Bengaluru - 560 022

#### CORPORATE OFFICE:

Vikram Structures Pvt. Ltd.  
#22, 5th 'A', Main Road, Near Baptist Hospital  
Behind Royal Senate Hotel, Hebbal, Bengaluru - 5600 24

+91 8880 567 567

sales@vspl.org | www.vspl.org