



Metropolis

Live the
Metropolitan Life

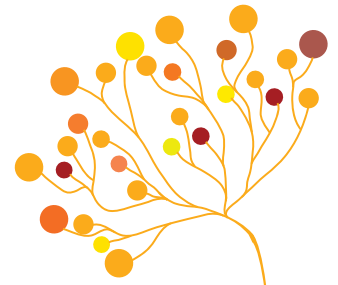
| 1 & 2 BHK Residential Apartments
| Yeshwanthpur, Bengaluru



Ready for
fit-outs

Occupancy Certificate (OC) obtained • Approved by all major banks

Metropolis



At the heart of the city is Metropolis, VSPL's new flagship project at Yeshwanthpur. Blended perfectly with the natural environment while still embracing every facility and service you could wish for, Metropolis is a haven for budding aspirants and dreamers who wish to make a mark in the city and be a part of its charm. With every major necessity a stone's throw away, life envelopes you in a simple and artistic way, providing you a hassle-free environment.

PROJECT DETAILS

- No. of units : 43
- No. of floors : G + 3

PROJECT AMENITIES

- Kid's Pool
- Gymnasium
- Multi-Purpose Hall on Terrace
- CCTV in the Common Areas
- 24-hour Power Backup
- 24/7 Security
- Wi-Fi Capability
- Intercom to all Apartments
- Sewage Treatment Plant
- Rainwater Harvesting

GROUND FLOOR PLAN



TYPICAL FLOOR PLAN



FLOOR PLANS



SBA: 1 BHK (640 sqft)



SBA: 2 BHK (725 sqft)



SBA: 2 BHK (775 sqft)



SBA: 2 BHK (808 sqft)

ACTUAL MODEL APARTMENT

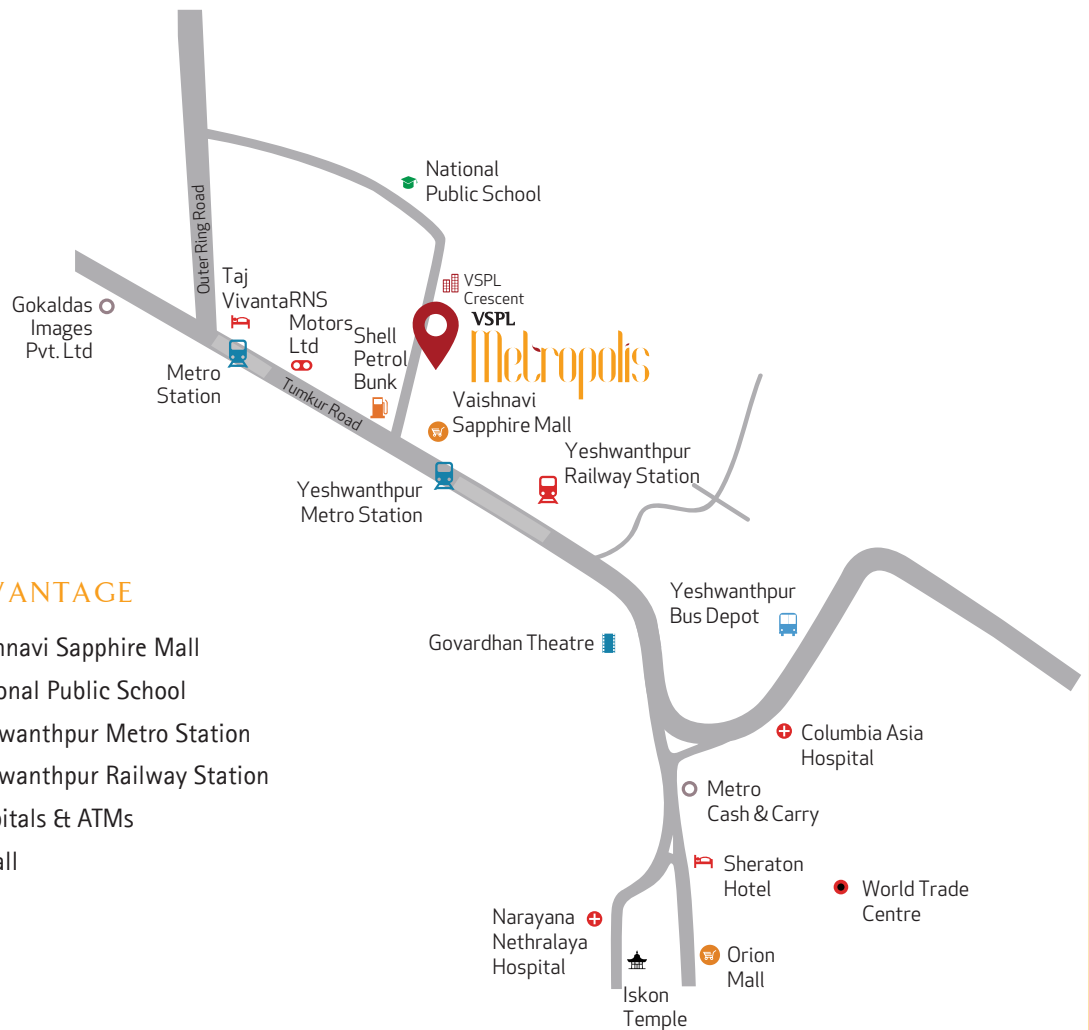
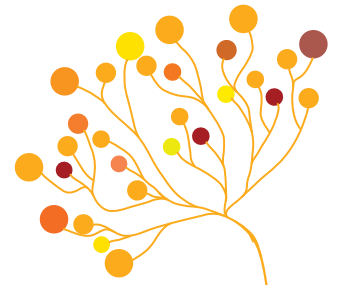


Shot on location

Seasoned in the market for almost a decade, our evolution from contractors in 2008 to individual project builders presently, in core housing has been quite enthralling. Our vision of offering value to the customers by continuously striving towards innovation and excellence has paved our path towards success.

We help build little dreams in the form of homes and do our best to keep our customers trust intact on us. We aspire to keep building quality & investor-friendly homes.

A HOME IS MORE THAN FOUR WALLS AND A CEILING. IT'S THE FEELING OF SAFETY AND WARMTH YOU GET WITHIN THOSE WALLS. AND THAT IS WHAT VSPL PROMISES.



LOCATION ADVANTAGE

- 🚶 2 mins walk to Vaishnavi Sapphire Mall
- 🚶 2 mins walk to National Public School
- 🚶 4 mins walk to Yeshwanthpur Metro Station
- 🚶 5 mins walk to Yeshwanthpur Railway Station
- 🚶 2 mins walk to Hospitals & ATMs
- 2.5 Kms to Orion Mall

SITE ADDRESS

10/1, Pipeline Road, (Previously BWSSB Road), Near Shell Petrol Bunk, Yeshwanthpur Bengaluru - 560 022

CORPORATE OFFICE:

Vikram Structures Pvt. Ltd.
#22, 5th 'A', Main Road, Near Baptist Hospital
Behind Royal Senate Hotel, Hebbal, Bengaluru - 5600 24

+91 8880 567 567

sales@vspl.org | www.vspl.org