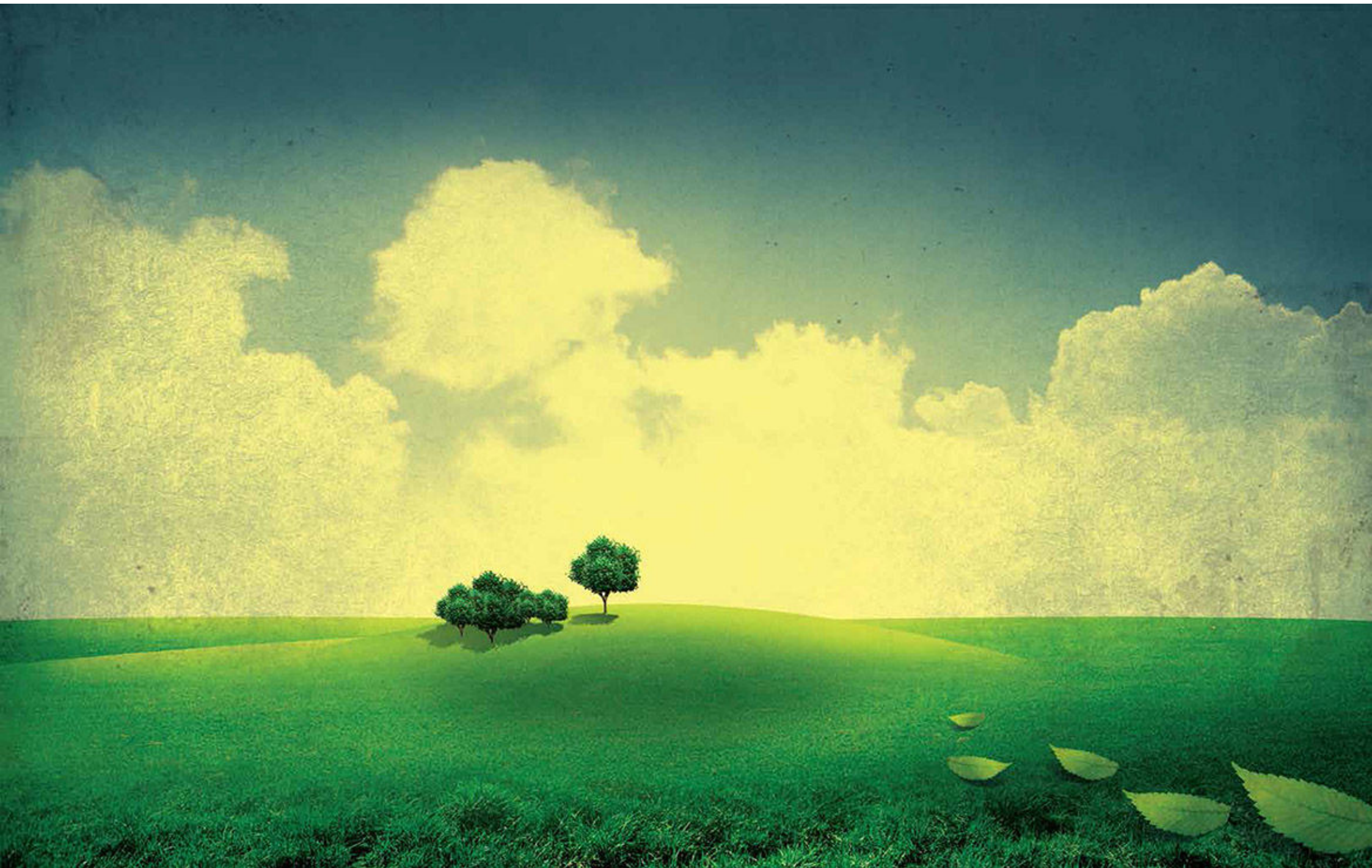




AMARJA
HILLS



A watercolor illustration of a landscape. In the foreground, there are two rolling green hills. The larger hill on the right has a tree with a curved trunk and several green leaves. Above the tree, two small orange birds are flying. The background is a light, textured green wash. The title 'SOUVENIRS FROM NATURE' is written in white, serif, all-caps font across the middle of the green hills.

SOUVENIRS FROM NATURE

BEAUTY, SERENITY & GENEROSITY

Ever given a thought on how much Mother Nature has bequeathed upon us? The delightful stories the blooming flowers share with the sky. The quiet yet cheerful dew drops sliding on the face of the tender leaves or the gleaming sunlight getting cozy and welcomed by the benevolent forests. Even though we continue to destroy and deplete it, Nature always bestows its kindness upon us. Take a moment to praise and thank Mother Nature for her generosity and preserve her momentous souvenirs.



Actual Picture



PAWNA DAM

GIGANTIC YET ADORABLE

Feel exhilarated as you lay your eyes upon the mighty Pawna Dam. The view of the Pawna Dam and the beautiful Sahyādri mountain ranges are a blessing for those who would reside at Amarja Hills. It is a real feast for the eyes. Historical places such as Karla Caves, Lohagad Fort and the Tikona Fort are also nearby.



Actual Picture

A stylized illustration of a green hill. In the center, a bright orange sun is partially obscured by a green mist. To the left, there are several thin, leafless trees. To the right, a single tree with a rounded green canopy stands. In the foreground on the right, the silhouettes of a family (two adults and a child) are walking. Two birds are flying in the sky above the sun. The entire scene is set against a light green background with a soft, glowing effect around the hill.

AMARJA HILLS

NURTURED BY NATURE

Live a picture perfect life at Amarja Hills, a project by Nanak Properties which is located amidst the green carpeted mountains of Lonavala, consisting plots of sizes varying from ½, 1, 2 and 3 acres, beautiful Wooden Chalets, Wooden Log Houses and Concrete Bungalows designed according to your preference, complete with a vast stretch of scenic garden and an enchanting view of Pawna Dam and the beautiful Sahyādrī mountain ranges.





GREEN PARADISE

CELEBRATE LIFE WITH NATURE

The Amarja Hills project is spread over 200 acres of land, 60 acres of which consists of Log Houses, Chalets and Villas that have been made available to the buyers. Amarja Hills gives you a fine opportunity to build your dream home amidst the breathtaking mountains and by the spectacular Pawna Dam. Buy your own plot at Amarja Hills, and we can build you a customized home as per your wishes and requirements. Wake up to see the charming mornings and spend the whole day with the fascinating nature. These plots made available for you are also a good investment for your future.



Actual Pictures



THE NEIGHBOURHOOD

AN UNINTERRUPTED LIFE

Amarja offers you spectacular homes by the ravishing mountains and the breathtaking beauty of nature. In cities when you open your windows you see nothing but buildings and skyscrapers blocking the picturesque mornings. Here at Amarja Hills there are no tall buildings or skyscrapers to refrain you from the beautiful mornings, and you get an unrestricted view of nature from your home. The area is well developed with proper paver block roads and other amenities. For other necessities there is Pawna Nagar just ½ a km away, where you have the Market, Garage and Hospitals for emergencies.

Actual Pictures





Actual Picture



◀ 4 BHK Wooden Log House built on 60,000 sq.ft of land.

Actual Pictures



EXUBERANCE OF NATURE

Beautiful and elegant Wooden Log houses constructed using Russian Pinewood, reflects the lifestyle you have. Feel the mesmerizing wind tickle you as you sip a cup of coffee and read your favourite novel. With the enchanting and cozy interiors, you would absolutely feel like resting in the arms of the angelic nature.





WOODEN CHALET'S

◀ 3 BHK Wooden Chalet built on 22,000 sq.ft of land.



Actual Pictures

BEAUTIFY, MYSTIFY, SIMPLIFY.

Simplicity in the form of a house, constructed from pure pine wood, ensures the durability of your home. Watch how the magnificent wooden chalets hypnotize you, and leave you bedazzled and spellbound. Elope from the intricacies and complexities of your monotonous routine and begin a new life in a simple and ingenious manner.



Actual Picture

VIVACIOUS VILLAS

◀ 4 BHK Villas built on 50,000 sq.ft of land.



Actual Pictures

DREAMS, MEMORIES UNHARMED.

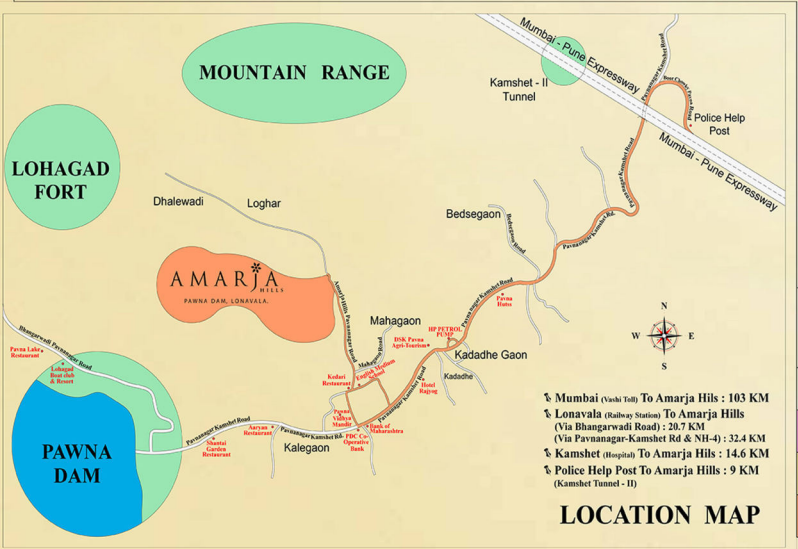
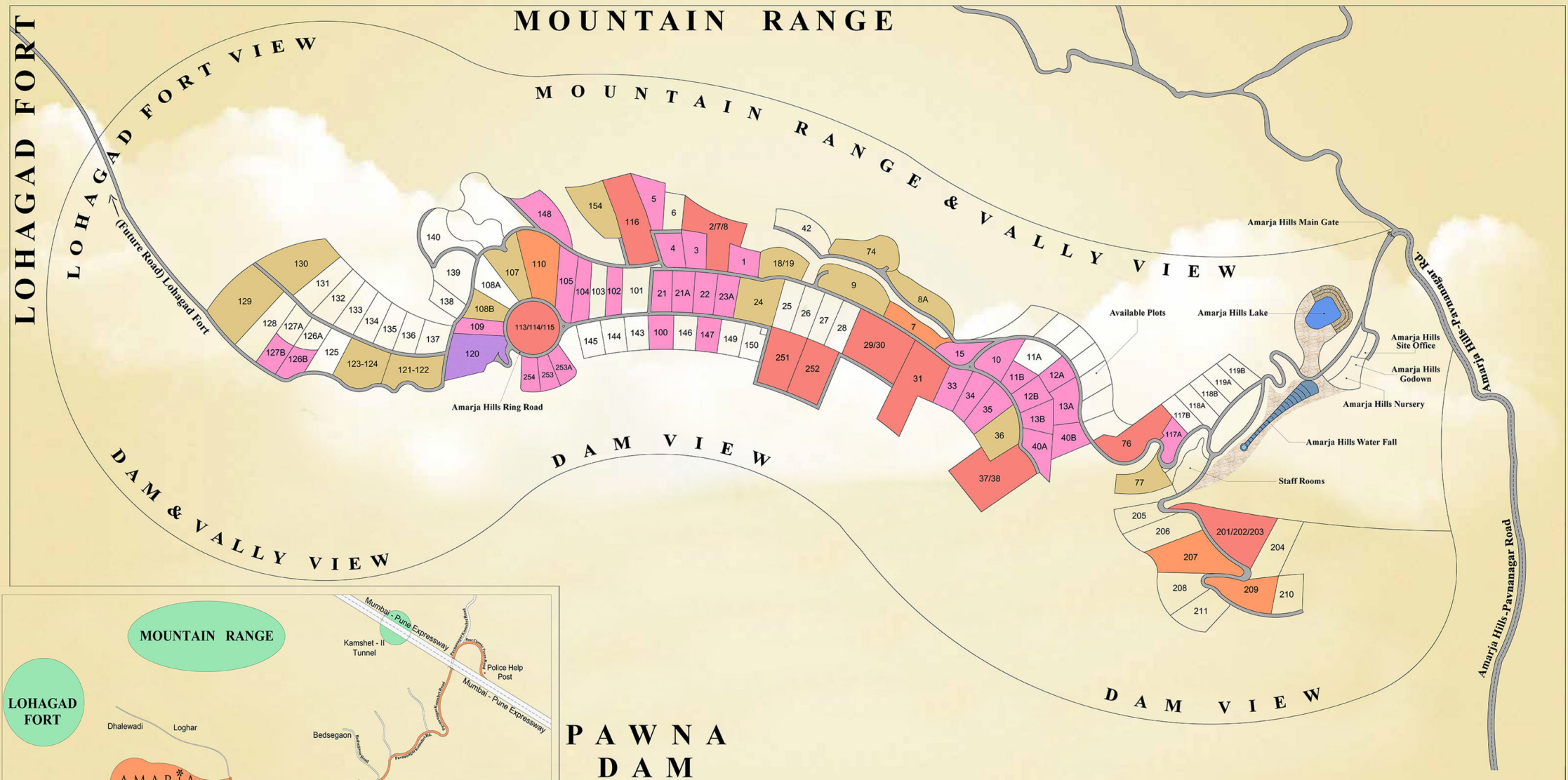
The adorable bungalows from your dreams, are not far from reality. With every possible modern amenity and top of the line facilities, the exquisite villas at Amarja are possibly the best for you and your family. Spend quality time with your loved ones and build unforgettable memories. Rest assured that your dreams & memories will stay unharmed.





EUPHORIA, DELIGHT, REPOSE. COMING SOON

Your search for the lost paradise is about to come to an end. Amarja Woods is an upcoming resort by Amarja Hills at Lonavala where you can wade through the refreshing waters in the pool, or take a sip of the rejuvenating exotic drinks. Whatever you do, you won't feel like going back to the boring and monotonous urban life again.



PAWNA DAM

LEGENDS

Available Plots	1.5 ACRE PLOTS SOLD
1/2 ACRE PLOTS SOLD	2 ACRE PLOTS SOLD
1 ACRE PLOTS SOLD	WATER BODY
1/3 ACRE PLOTS SOLD	ROAD



LAY-OUT PLAN
 Amarja Hills /
 Pavna Nagar / Mahagaon /
 Near Pawna Dam / Lonavala
 Tal - Maval,
 Dist - Pune / 400076

MOUNTAIN RANGE

LOHAGAD FORT

Dhalewadi Loghar

AMARJA HILLS
PAWNA DAM, LONAVALA.

PAWNA DAM

Kamshet - II Tunnel

Police Help Post

Bedsegaon

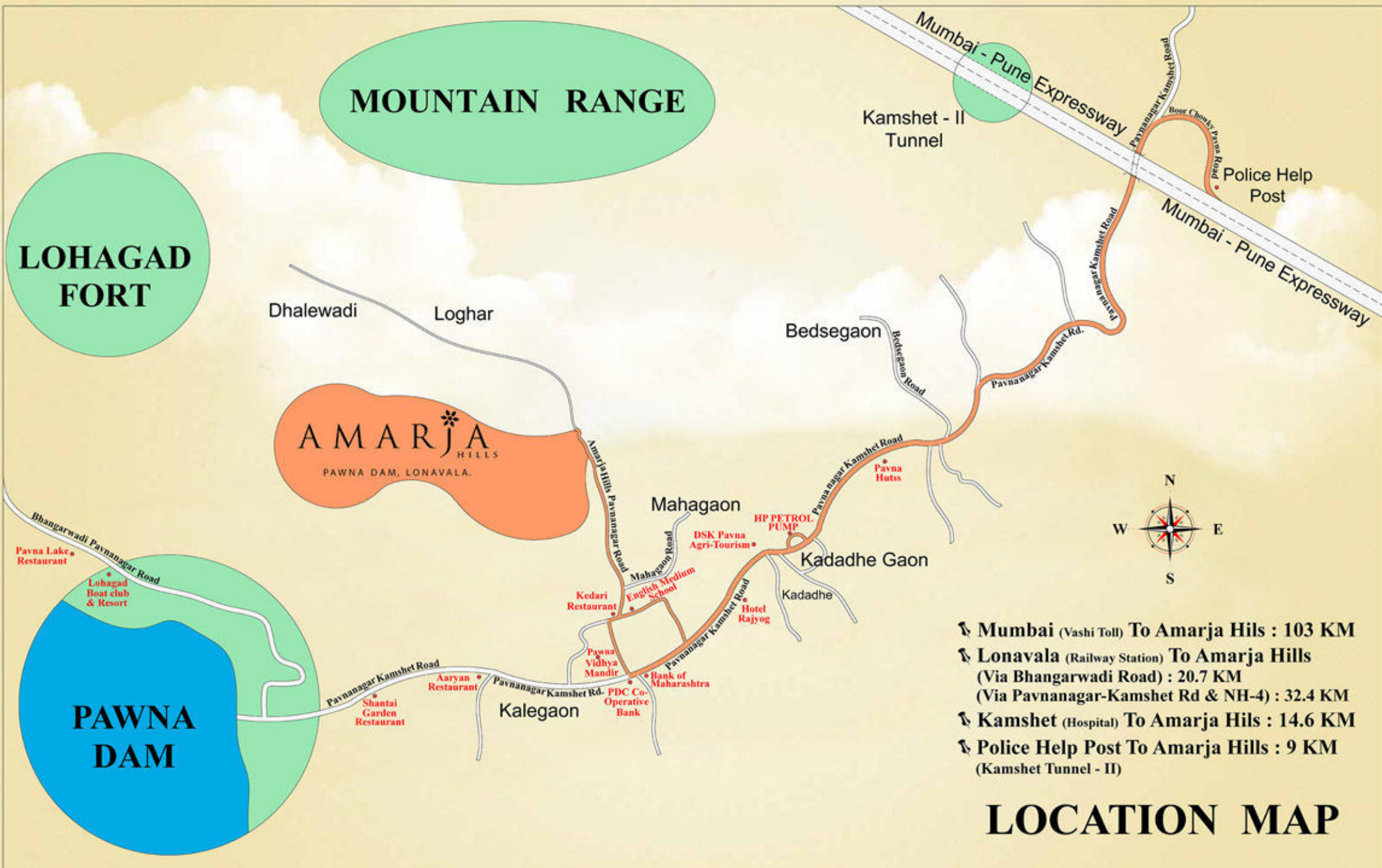
Mahagaon

Kadadhe Gaon



- 🚗 Mumbai (Vashi Toll) To Amarja Hills : 103 KM
- 🚗 Lonavala (Railway Station) To Amarja Hills
(Via Bhangarwadi Road) : 20.7 KM
(Via Pavnanagar-Kamshet Rd & NH-4) : 32.4 KM
- 🚗 Kamshet (Hospital) To Amarja Hills : 14.6 KM
- 🚗 Police Help Post To Amarja Hills : 9 KM
(Kamshet Tunnel - II)

LOCATION MAP





Site Address: Amarja Hills, Pawana Nagar, Mahagaon,
Near Pawana Dam, Taluka-Mavel, Dist-Pune.

Corporate Office: 101, Sneha, Opp. Sasural, Lokhandwala Complex,
Andheri (W), Mumbai - 400 053.

For more details, kindly contact: 022 - 40405252
Upesh +91 9987987987, Sandip +91 9870456789, Prashant +91 9892234444.

Email: info@amarjahills.com Visit us at www.amarjahills.com
www.nanakproperties.in | Email: nanakproperties@gmail.com

AMARJA
HILLS
PAWNA DAM, LONAVALA.