



A New Beginning



For You Always...







## SS South Crest

### 2 & 3 BHK Serene Homes on Bommasandra – Jigani Link Road

SS South Crest is a prime and prestigious project that houses 2 and 3 BHK Apartments in Bommasandra – Jigani Link Road, Off Hosur Road, Close to Electronic City. Spacious with loads of natural light all around with NO COMMON WALL and intelligent use of space. Located about 5 Kms from Electronic City and about 4 Kms from Jigani APC Circle behind Sobha Interior Factory. Over 2000 large and medium sized industries, 3 SEZ's, 50 MNCs, Shopping Malls, international schools and hospital are in close proximity to the property.

The project houses only 88 Apartment in 1 Acres 09 Guntas that comprises 2 and 3 BHK with latest designs. Each individual flat thrives on the Eco friendly concept to provide maximum sunlight and ventilation. The development has an amenities like health club, swimming pool, children's play area, car park with car wash facility and lush landscaped gardens to provide maximum leisure and facilities to the residents. The open neighbourhood gives you fresh air.





# Master Plan



- LEGEND**
- 1. Club House
  - 2. Swimming Pool
  - 3. Children park
  - 4. Visitors Car Parking
  - 5. Sump
  - 6. Security Cabin

## Floor Plan - Block 1



## Floor Plan - Block 2

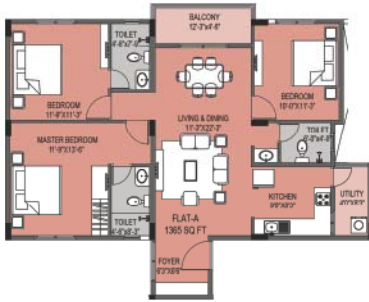


## Floor Plan - Block 3

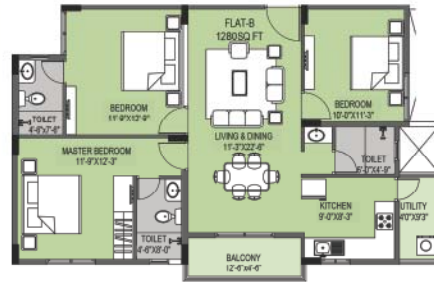


# FLOOR PLANS

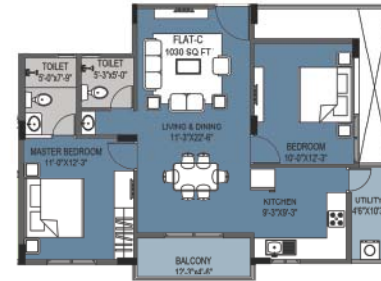
BLOCK - 1 FLAT - A



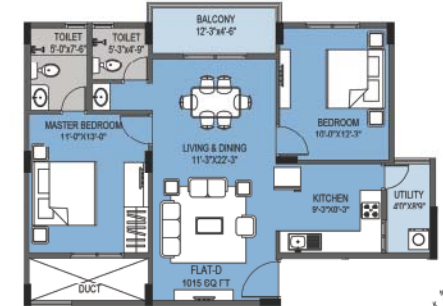
BLOCK - 1 FLAT - B



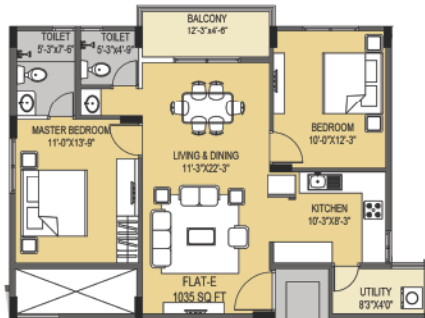
BLOCK - 1 FLAT - C



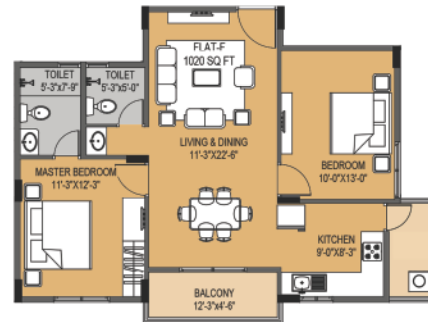
BLOCK - 1 FLAT - D



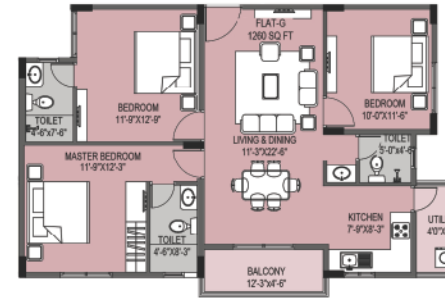
BLOCK - 1 FLAT - E



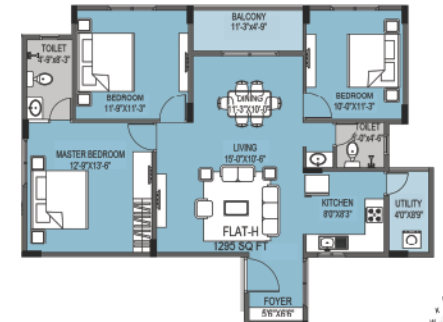
BLOCK - 1 FLAT - F



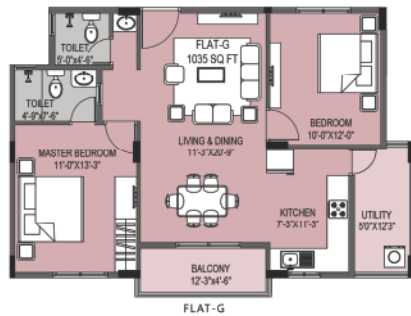
BLOCK - 1 FLAT - G



BLOCK - 1 FLAT - H



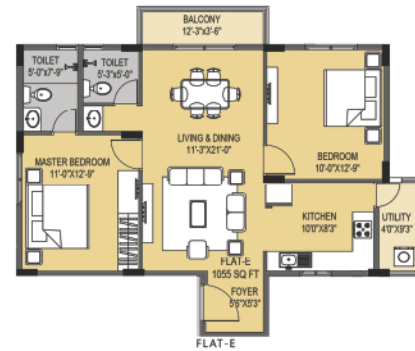
BLOCK - 2 FLAT - G



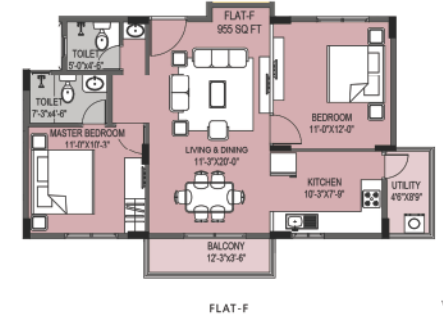
BLOCK - 3 FLAT - B



BLOCK - 3 FLAT - E



BLOCK - 3 FLAT - F





## HIGHLIGHTS

- ◆ BMRDA Approved
- ◆ CC and OC will be provided
- ◆ UDS will be more than 50% of super built up area
- ◆ Fully loaded amenities
- ◆ Exclusive features
- ◆ Feeling of living in an Independent Home
- ◆ No Common Walls
- ◆ 100% Vaastu
- ◆ Separate Utility
- ◆ Stilt Car Parking
- ◆ Lifts and Staircase
- ◆ Clear Property Titles



## SPECIFICATIONS

**Structure:** RCC Frame Structure with concrete blocks.

**Flooring:** Vitrified tiles. Anti skid Ceramic Tiles in Bathroom and Balcony.

**Electrical:** Concealed copper wiring with circuit breakers and modular type switches.

**Bathrooms:** Premium Ceramic Tiles. White / Ivory sanitary ware. Hot & cold mixer unit for showers. Health faucets for all toilets.

**Doors:** Engineered wood frame and veneer polished shutters with premium fittings. Water proof laminated shutters for toilets. Flush doors for bedrooms.

**Windows:** Aluminium sliding doors / windows.

**Painting:** Internal – Emulsion. External – Apex.

**Kitchen:** Black Granite Top with stainless steel sink. 2' feet Dado above Granite platform. Plumbing provisions for water purifier above sink.



# AMENITIES



- ◆ Swimming Pool
- ◆ Toddler's Pool
- ◆ Health Club / Gymnasium
- ◆ 100% Power back up
- ◆ Walking TRack
- ◆ Multi Purpose Hall
- ◆ Children's Play Area
- ◆ Visitors Car Parking
- ◆ Landscaping
- ◆ STP
- ◆ 24 Hours Security with Intercom
- ◆ CCTV
- ◆ Ground water
- ◆ Rain water harvesting
- ◆ & Many More..



Type `A`



Type `D`



Type `F`



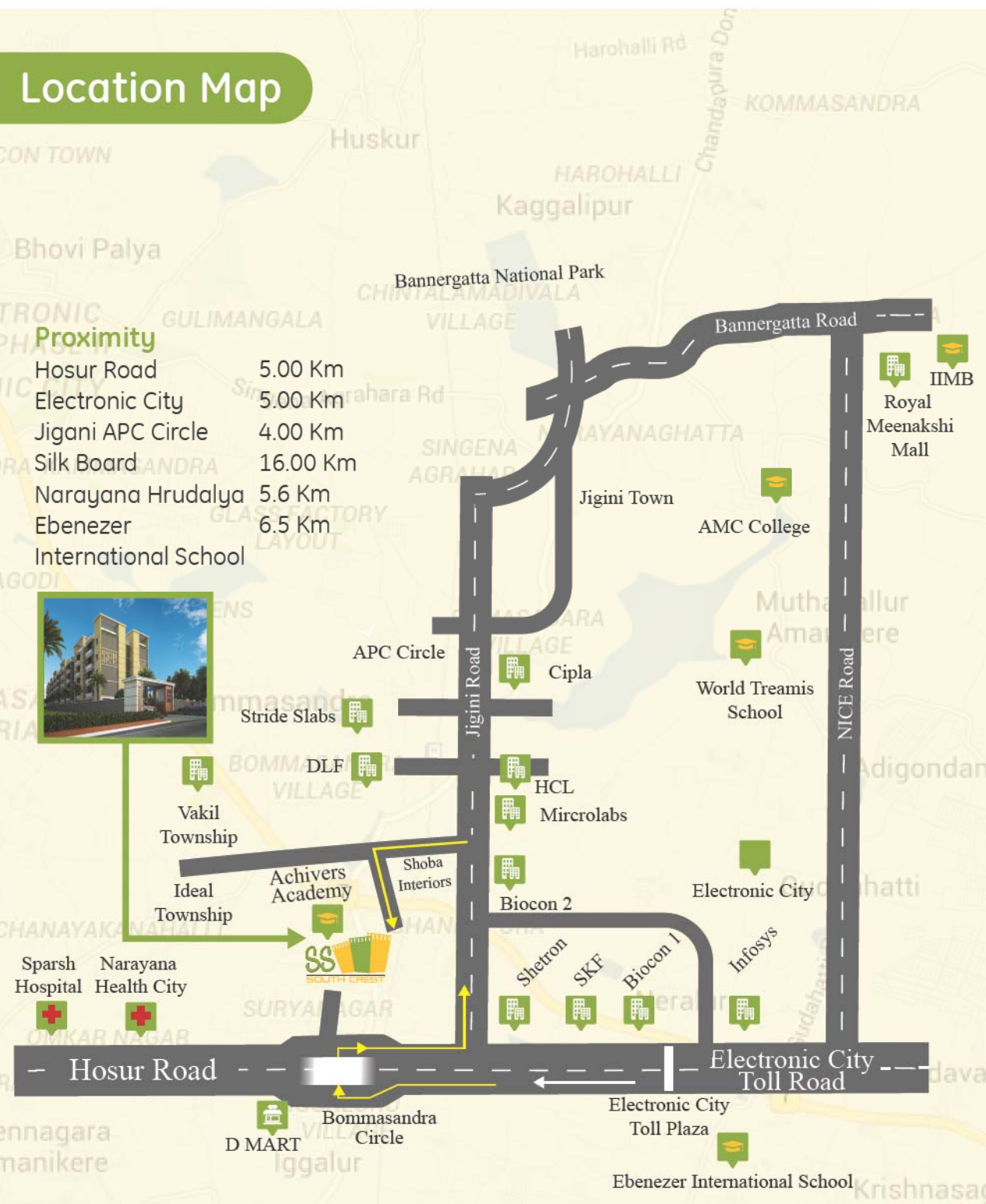
Type `H`



## Location Map

### Proximity

Hosur Road	5.00 Km
Electronic City	5.00 Km
Jigani APC Circle	4.00 Km
Silk Board	16.00 Km
Narayana Hrudalya	5.6 Km
Ebenezer International School	6.5 Km



### About Locality

Close to all the conveniences and surrounded by reputed MNC Companies, Biotech Park, HCL Tech park, Small and Medium size industrials and near IT Hub. Electronic City is an IT Hub and home to some of the best known global companies. It is one of India's largest electronic industrial parks; spread over 332 acres and houses nearly 400 IT companies with very large workforce. A large number of IT Companies are also situated along the Hosur Road Highway. The highway or Hosur Road, also has some buildings of some major IT players along with showrooms of major auto.



### Shri Shabari Infrastructures

# 704, Anjanadri Nilaya, 30th Main,  
BTM Layout 2nd Stage  
Bangalore - 560 076

**E-mail :** [ssinfra99@gmail.com](mailto:ssinfra99@gmail.com)

**Website :** [www.shrishabariinfra.com](http://www.shrishabariinfra.com)

**Mobile :** +91 7259498688

### Site Address

Sy No. 44/6A, Srirampura, Kyalasanahalli Village,  
Jigani Hobli, Behind Sobha Interior Factory,  
Bangalore - 560 106