

360 dwellings that encircle you with happiness

MBR
Shangri-La
a paradise on earth...

Luxurious 2 & 3 Bedroom Residential Apartments



360 reasons for a cozy lifestyle

About us: MBR built not only dwellings, but also a name to reckon with in the housing sector. We have been offering quality homes at affordable costs. Continuing our business tradition, we have come up with our latest project, the MBR Shangri-La, near RV Engineering College, on the Mysore Road.

Drawing inspiration from Shangri-La, a fictional happy land, we too have named our project so. And, not without reason. Feature for feature, MBR Shangri-La stands out as an edifice whose occupants would, surely, feel being a part of the privileged few.





Close to comforts, closer to nature

The nerve-centre of a happening city is not far away, yet far away for a noise-free environment. Located about four km away from Rajarajeshwari Nagar Arch on the Mysore Road, you have, within easy reach, the comforts of the present age combined with the serenity of those days.

Dotting the Mysore Road, are what you would surely expect – reputed educational institutions, multi-specialty hospitals, modern malls, global firms, super markets, places of worship, etc. Joining this road are Kanakapura Road, Uttarahalli Main Road, etc.

If you are impressed by the location, be prepared for a greater surprise about our apartments. Get the feel of the popular comic-hero Mandrake's well-fortified Xanadu residence. Tucked away in the quiet whispers of only natural sounds like the chirping of the birds, rustling of leaves, gushing of the gentle breeze and an occasional rippling noise of the still waters of the swimming pool, you get to hear nothing else.

Coming to the apartments itself. Structural design, optimum utilization of space, safety norms and other friendly features should, surely, leave you asking for nothing else.

Night view of Shangri-La



360 choices, only one reason - a happy lifestyle

PROXIMITY

- Metro Station 0.4 Km
- The Club 2 Km
- Gopalan Arcade
- Rajarajeswari Temple
- Subramanyeshwara Temple
- Nimishamba Temple
- Bangalore University (Gnana Bharathi)
- R. V. Engineering College
- Global Tech Park 1 Km
- National Hill View School
- Manipal Hospital
- BDA Complex
- BMTc Bus Stand
- Railway Station 10 km
- BGS Global Hospital
- Police Stations Etc.,

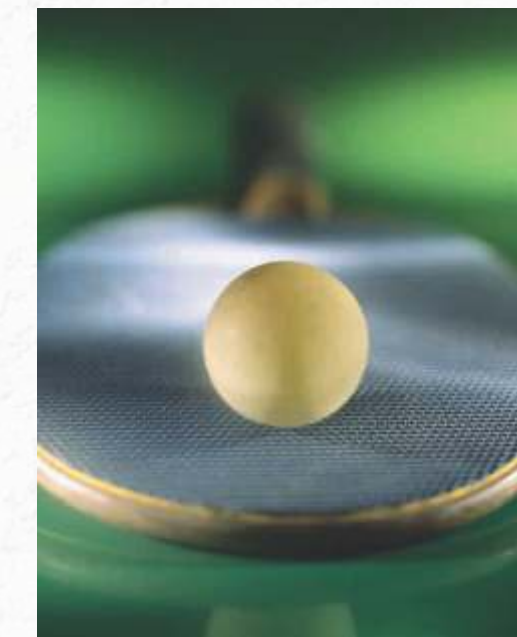
PROJECT SUMMARY

Project Location	:	On Mysore Road, Near RV Engineering College
Road Width	:	120 feet Approx
Proposed Development	:	Basement, Ground + 8 Floors
Total number of units	:	360 units
Total number of 2 B/R	:	208 units
Total number of 3 B/R	:	152 units
Provision of 4 BHK	:	2000 sft aprox (By adding 2 Flats of 2 BHK)
Approvals	:	BBMP Approved



AMENITIES

- Magnificent swimming pool
- Well equipped gymnasium
- Children's play area
- Land scape garden
- Club house
- Mini market
- Power back-up
- Skating rink
- Jogging track
- 24/7 Security with CC TV
- Reserved Parking
- Mini Basket Ball Court
- Intercom
- Amphitheater
- Visitor Car Parking.



Swimming Pool

Oh! There is that swimming pool. Splash into it, wade through the water, sit by the rim and dangle your legs in the pool or just relax in an easy chair on the concrete slabs and read your favorite novel.



Step out of the apartment. Walk, without a care, on the well-manicured pathway. Laze around in the landscaped garden while the children are busy in their own world in the child-safe playing area.

Want to feel cozy? Head to the clubhouse. Intellectually-challenging chess to physically-testing table tennis, almost every game is at hand. Not in a mood to play? Relax. Glance through the day's newspapers. Flip the pages of your favorite magazines. Read a novel. Share a joke with others. Do your own thing.

The health freak has his favorite spot called the gym. Stocked with the latest equipment, work out without a second thought.

For the yoga and meditation freaks, and for those who want to find solace, a pace for meditation offers the spiritual ambiance and enough floor space free of any obstacles.

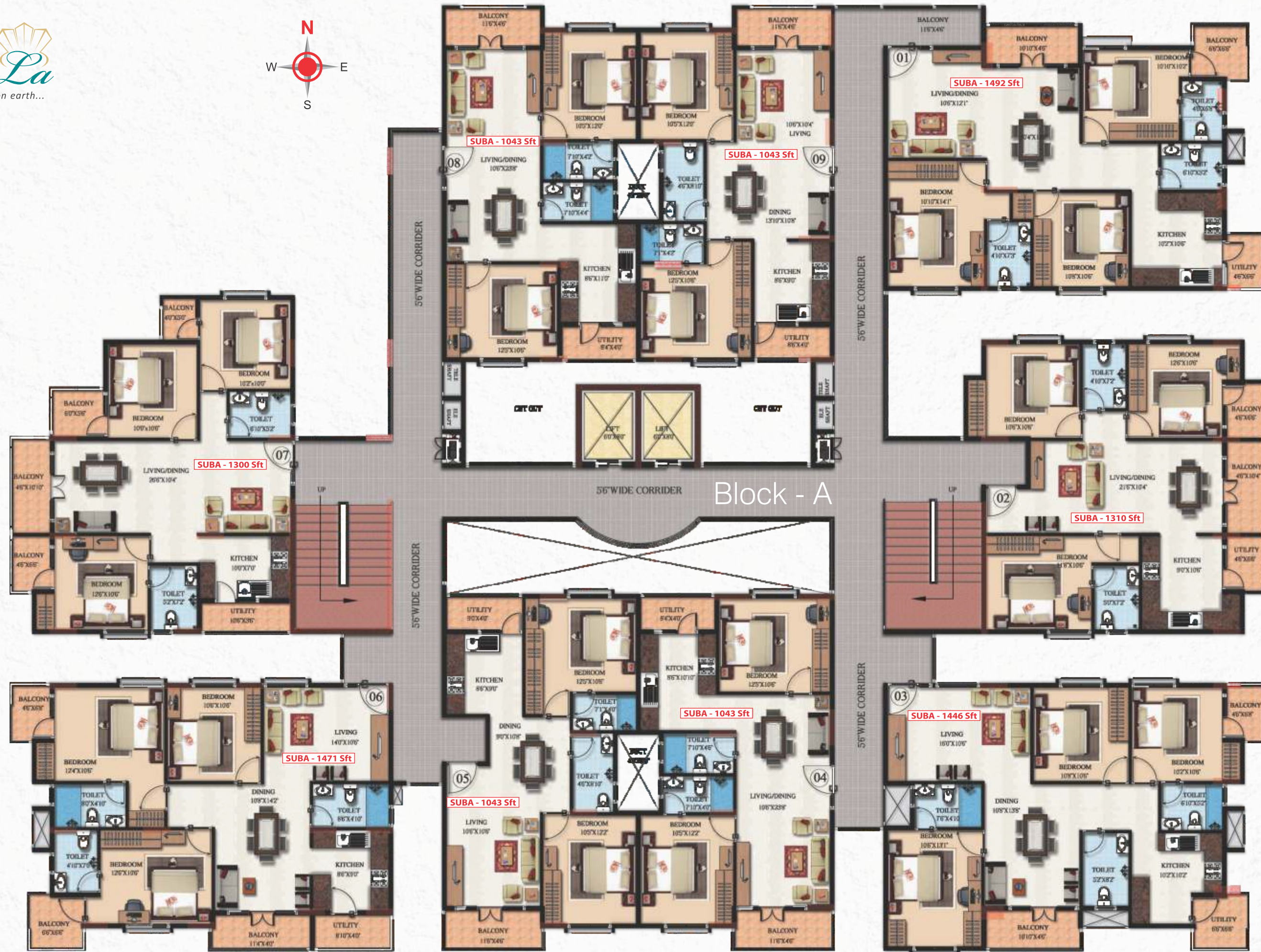
For the impulsive and compulsive shopper, the mini-market offers a wonderful opportunity.

The list of facilities goes on. Cricket-nets, skating rink, half basket-ball-court, every other thing that you would have wished for.





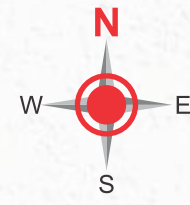
Typical Floor Plan : Block - A



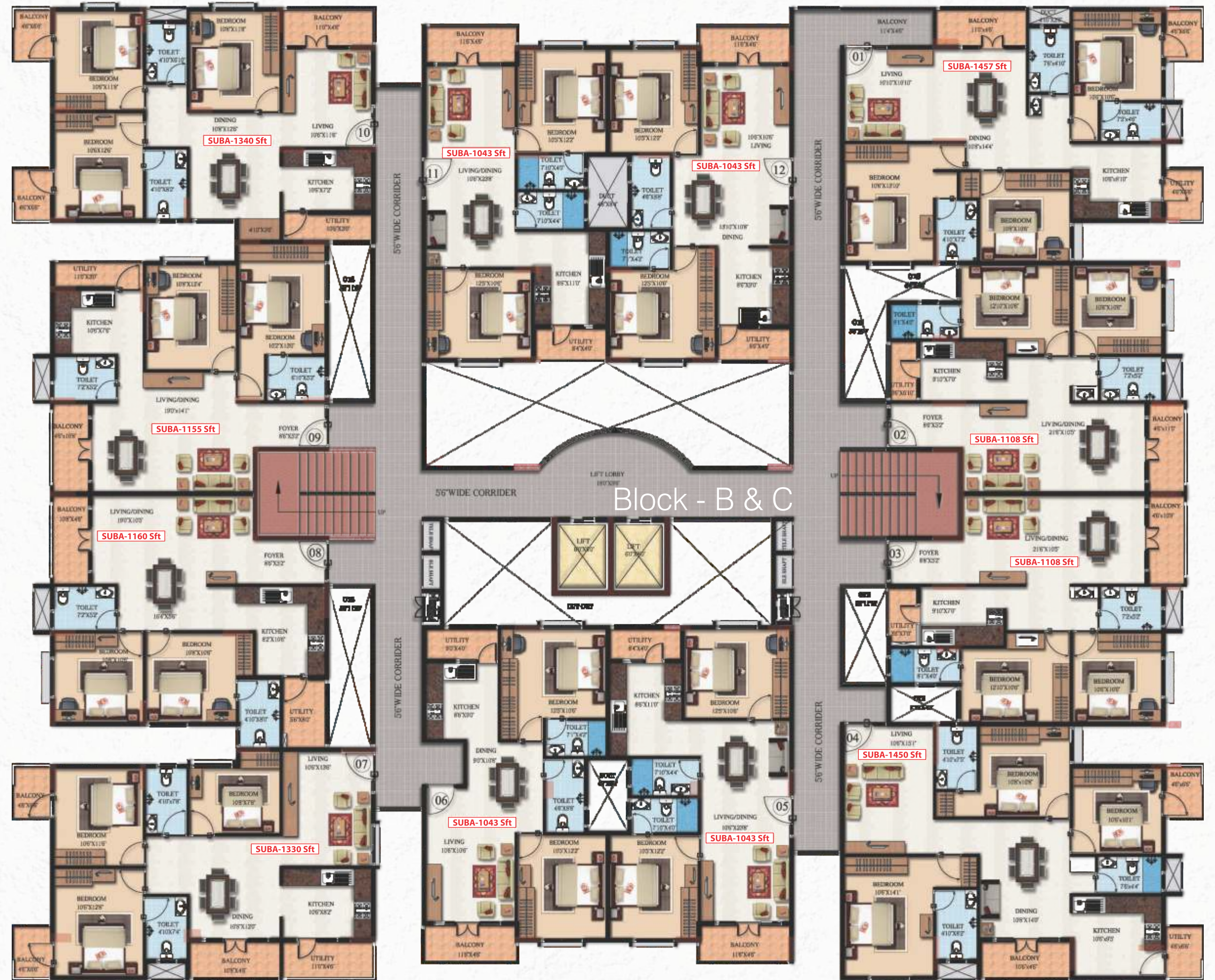
- 01- ENTRANCE
- 02-CLUBHOUSE
- 03-SWIMMING POOL
- 04-TOT LOT
- 05-HALF BASKETBALL COURT
- 06-SKATING RINK
- 07-TRANSFORMER
- 08-AMPITHEATER
- 09-DRIVEWAY
- 10- JOGGING TRACK
- 11- LANDSCAPE AREA
- 12- COMMERCIAL BUILDING

plan

RT



Happy land via 360 choices



Typical Floor Plan : Block - B & C ▶



Typical Floor Plan : Block - D



Block - D



Block - E

Typical Floor Plan : Block - E

Technical aspects like vitrified tiles, ceramic and granite surfaces where needed, fittings of well-known brands, easy-to-operate, yet safe and sturdy, windows and doors, plug points at convenient places, and facilities that make good living better, are well taken care of.

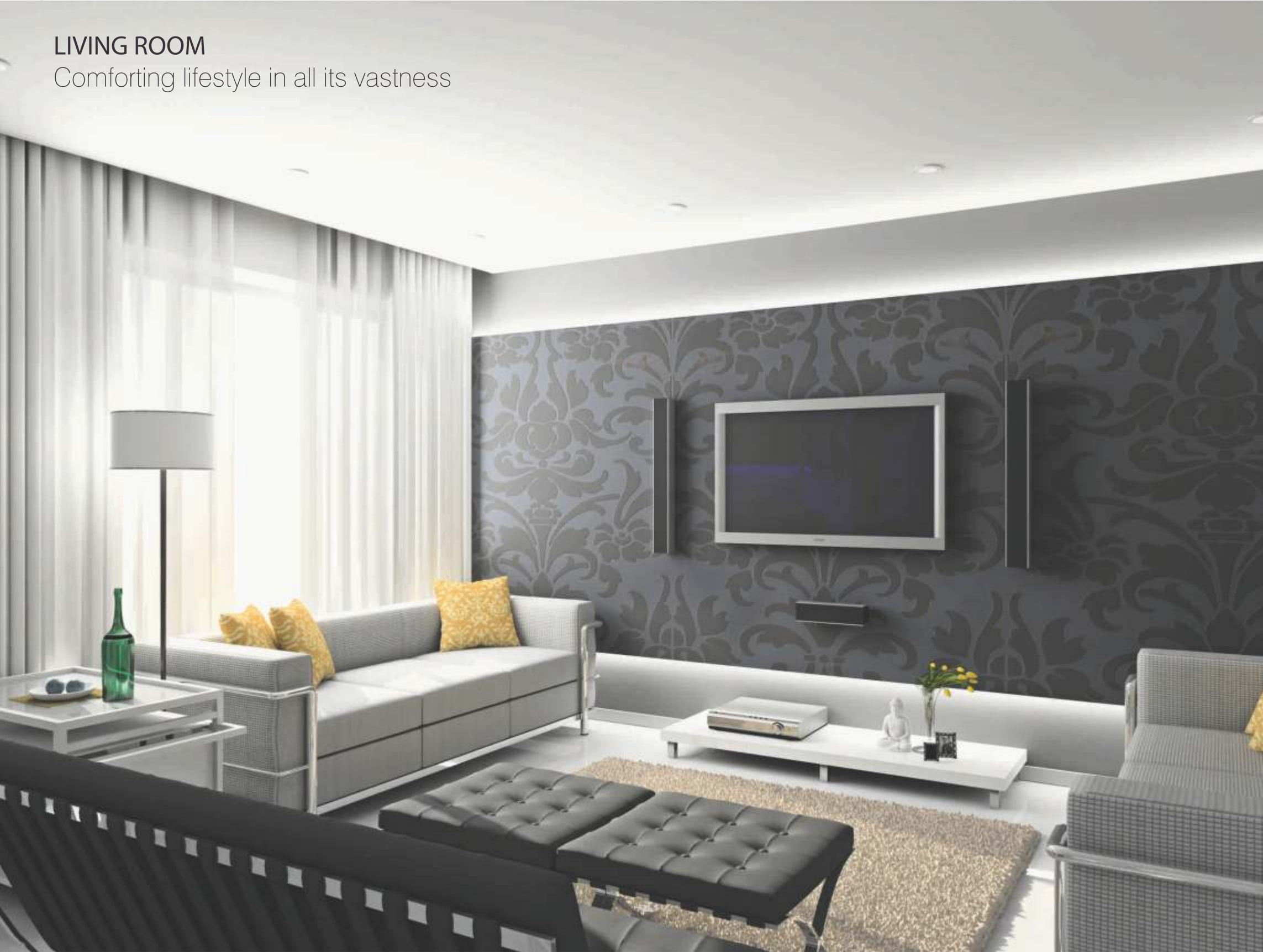
24x7 electricity-supply with back-up generators on the stand-by, round-the-clock security, lifts, rainwater-harvesting system, car park with ample space and various other amenities make investment in a MBR Shangri-La apartment worth the effort.

Well-planned and aesthetically laid-out kitchen, rooms, hall, bath, etc., make the apartment receive maximum light and ventilation. Look out of the window. Feast your eyes on the greenery all-round.

After all, only a small percentage of space is earmarked for construction. Savour the rising and setting sun. Listen to the chirping of the birds and rustling of the leaves. View the sky cloud-splattered in the day and star-studded in the night. Enjoy every moment of the day.

LIVING ROOM

Comforting lifestyle in all its vastness



KITCHEN

Matching the tastes of the queen of the kitchen

SPECIFICATIONS

Foundation, Column, Beams:

- All of reinforced cement concrete as per structural design.
- Walls of solid Concrete Blocks

Flooring:

- Living, Dining room , Bed Room Vitrified tiles flooring
- Balconies / Utility / Kitchen – Anti-skid Ceramic tiles.
- For Toilet / Bathrooms – ceramic tiles dado up to 7”height.
- Lobby and Staircase Area –a Granite / Marble as per architectural drawing

Bathroom Fitting:

- Quality fitting and fixtures of Hindware or equivalent.
- CP fitting of ESS-ESS jaguar or equivalent.

Doors and Windows:

- Main Door teak wood frame with OST shutters and remaining doors Sal wood frames with flush shutters.
- Aluminum frames with glass panel and safety grill.
- 3 track sliding windows in Bed Room and 2 track in other area

KITCHEN PLATFORM:

- Black polished granite with Stainless Steel Sink
- Coloured ceramic tiles 2 feet above the platform

LIFT:

- 2 nos of lift in each Block of Jonson lift/Konne or equivalent.

CABLE POINT:

- Cable point at Living Room & Master Bedrooms.

TELEPHONE:

- Telephone Points at Living Room & Master Bedrooms.

ELECTRICAL:

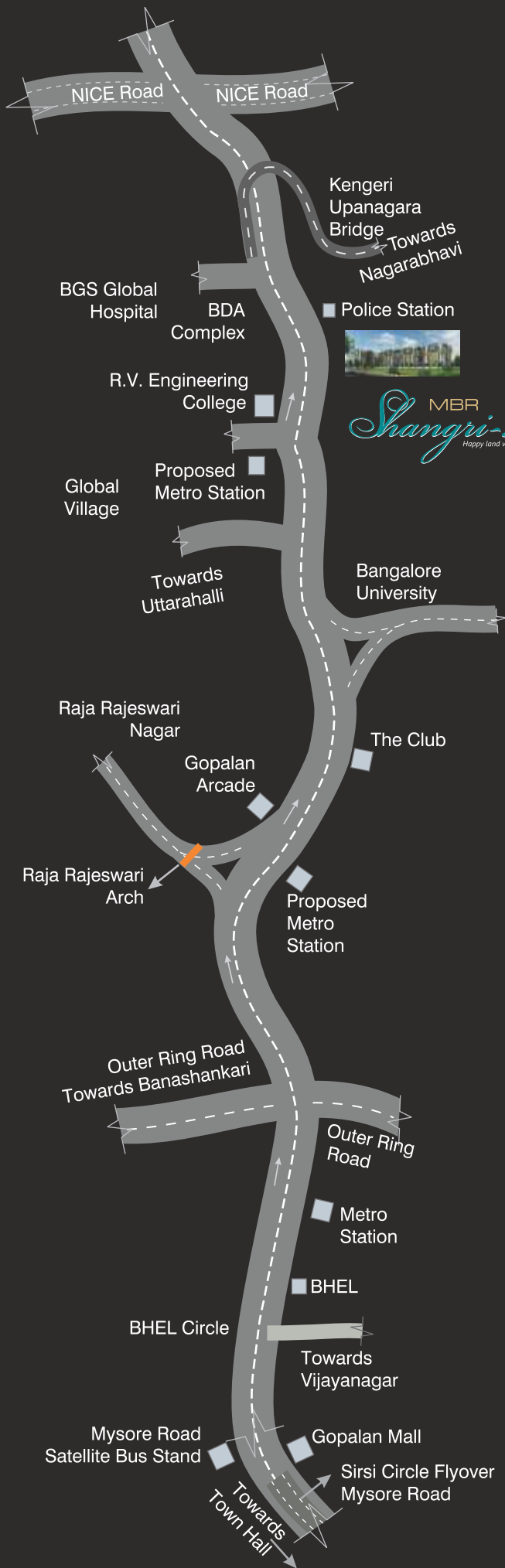
- Concealed copper wiring with adequate light points with TV/ Telephone points with in living and Master Bedroom of Anchor “ROMA” make, or equivalent.
- Power backup: For common area & 2 AMP for flats also



BEDROOM

Conjure up dreams of coziness

When paradise descends, Shangri-La emerges



Location Map

(not to scale)



Call, visit, sms or email us
Our executive would be only too glad to meet you and explain in detail.

A Project By:
MBR HOMES PVT. LTD.
Ashirwad Arcade # 01, 2nd Floor, 39 'F' Cross, 18th Main
Jayanagar, 4th 'T' Block, Opp. Sai Baba Temple, Bangalore 560041
E-mail: mbrbuilders@yahoo.co.in

For Enquiry / Booking Contact:
Telephone: 080 4091 4724 / 25
Mobile: 95919 33233, 76767 66333

www.mbrbuilders.in

The developer reserves the right to change specifications without prior notice, in the interest of quality and timely delivery. We request our valuable customers to note that any such changes made will not, in any way, be detrimental to the quality of the building.