

**THE**  
ELEGANTLY RISING  
ENVIABLY APPOINTED  
ELEVATED URBAN LIVING  
TAKES CENTRE STAGE  
RIGHT IN THE  
**BEATING HEART**  
**OF THE CITY.**







**Capella is here to make every resident experience the exhilaration of ultra-connected urban living in Arcot Road, Chennai.**

It is the epitome of class, a celebration of good things in life, built on the foundation of impeccable architecture and plush amenities.

Imagine living a beautiful dream where everything is built to perfection, where every moment is special. Be it a walk along the green pavements, a workout time of your own in the fitness centre, a refreshing dip in the pool or hosting a memorable gathering at the party hall, and it will be nothing less than extraordinary.

**Book yourself one. Make a statement every time you say where you live.**



### ADDRESS

Arcot Road,  
Vadapalani,  
Chennai.  
(Opp. Sooriya Hospital)

---

### NO OF BLOCKS & FLOORS

2 block  
Stilt + 18 floors

---

### NO OF FLATS

284

---

### APARTMENTS RANGE

1154 - 2307 sq.ft.\*  
2 BHKs, 3 BHKs & 4 BHKs

---

### CAR PARKING

Basement, Stilt,  
1st & 2nd Floor

\*RERA CARPET AREA  
756 - 1537 sq.ft.



**SWIMMING  
POOL**



**INDOOR  
GAMES**



**KIDS  
PLAY  
AREA**



**FITNESS  
CENTRE**



**WALKING  
TRACK**



**BANQUET  
HALL**



**PRIVATE  
THEATRE**

## **FOR LIFE'S CONVENIENCES**

### **COMMON AMENITIES & FEATURES**

---

#### **• CLUBHOUSE**

---

- Lifts with ARD & V-3F
  - CCTV cameras
  - Association office
  - Video security phone & intercom
  - Access controlled doors
  - Solar lighting for common areas
  - Boom barrier with RFID access for car park entry
  - 1000 watts supply for each apartment
  - 100% power back up for common areas
  - Sewage treatment plant
  - HNS
  - Flush water support by STP treated water
  - Rain water harvesting
  - Landscaped garden
  - Water softening plant
  - Toilets for drivers / domestic help
  - Water meters for all apartments
  - Drivers waiting room
  - Reticulated gas
-

# ALL IN THE DETAILS

## FLOORING

**Living + Dining** Vitrified tiles.

**Bedrooms** High-end vitrified tiles.

**Kitchen** Vitrified tiles.

**Balcony + Bathroom** Anti-skid tiles.

**Bathroom Wall Tiles** Up to false ceiling height.

## BATHROOM

**CP Fittings & Sanitary Ware** Kohler / Toto or equivalent.

Hand shower with mixer in Master bathroom.

Hand railing in one bathroom.

Wall mounted closet in all bathrooms.

**Shower Cubicle** Master bathroom.

**Kitchen** Granite platform with S.S.Sink / Carysil Sink with drain board wall tiles up to 2 feet above the platform.

**Windows** UPVC Fenesta / Equivalent.

**Balcony** Glass handrails.

## DOORS

**Main Door** Teak wood / Classy main door & Frame with varnish finish.

All Bedroom Doors hardcore flush door with melamine finish.

Termite treated wooden fittings.

**Bathroom doors** Anti-rotting door.

**Locks** Dorma / Hafele.

## WALL FINISH

**Exterior** Weather proof emulsion (Texture finish).

**Interior** Quality emulsion.

## ELECTRICAL

3-phase with individual meters.

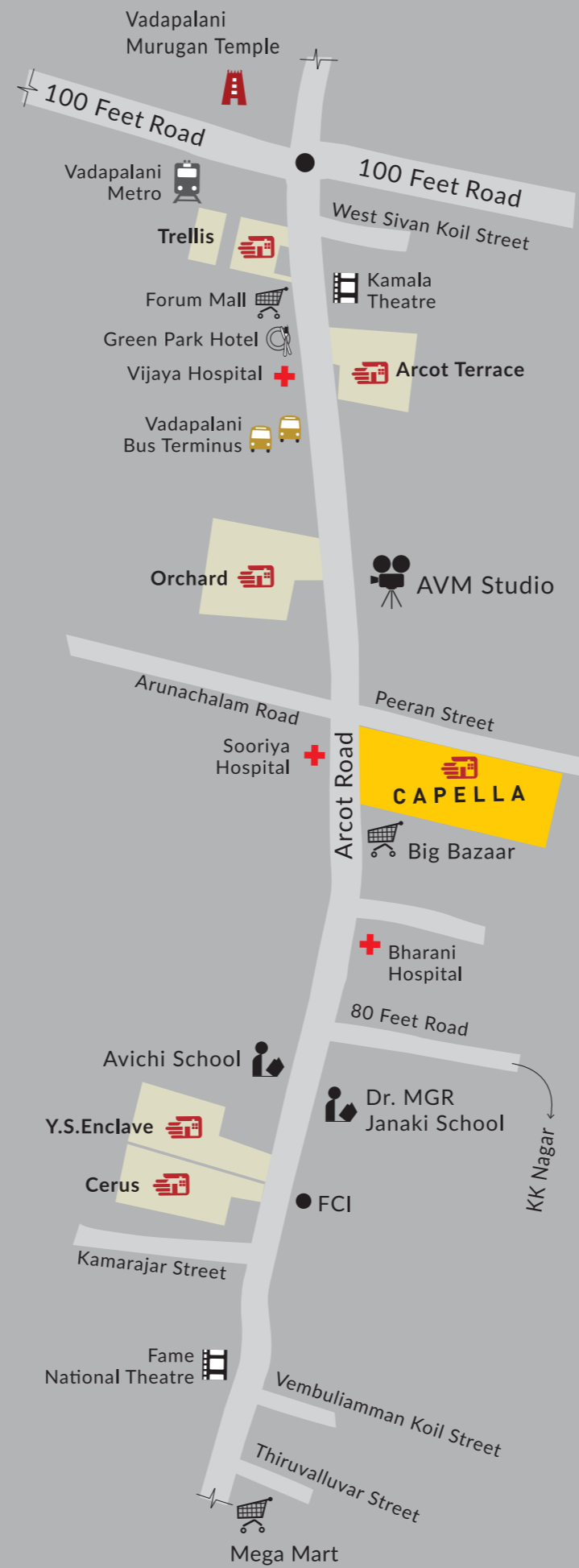
Panasonic / MK or equivalent modular switches.

**Bedrooms** 2-way switches for lights and fans in all bedrooms.

SIEMENS / equivalent ELCB Trippers in each flat.

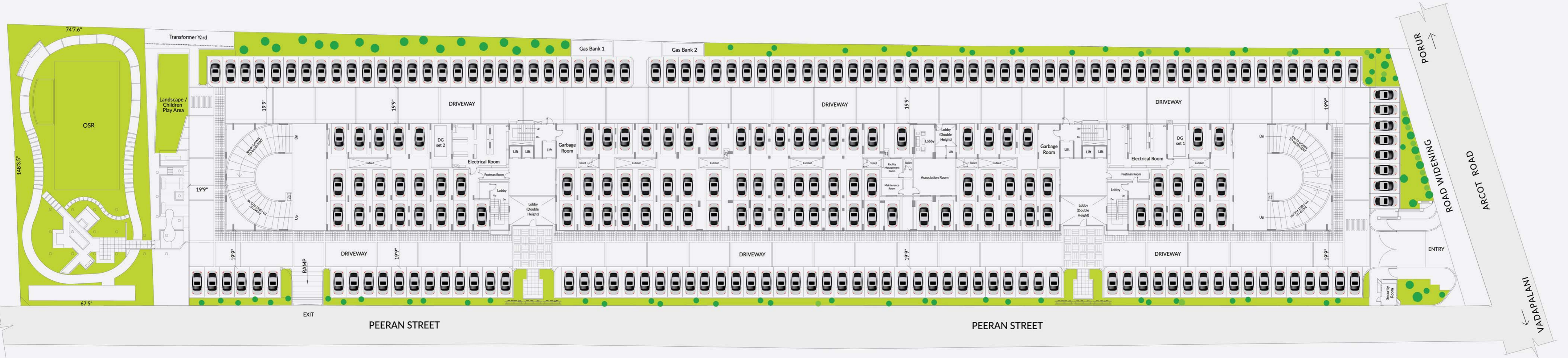


# OUT AND ABOUT



# FLOOR PLANS

SITE / STILT PLAN





\*RERA CARPET AREA  
A - 791 sq.ft. | D - 1075 sq.ft. | E - 1064 sq.ft. | H - 791 sq.ft.

\*RERA CARPET AREA  
F - 1538 sq.ft. | G - 1537 sq.ft.





\*RERA CARPET AREA  
 A - 791 sq.ft. | B - 1193 sq.ft. | C - 1193 sq.ft. | D - 1075 sq.ft.

\*RERA CARPET AREA  
 E - 1064 sq.ft. | F - 1538 sq.ft. | G - 1537 sq.ft. | H - 791 sq.ft.

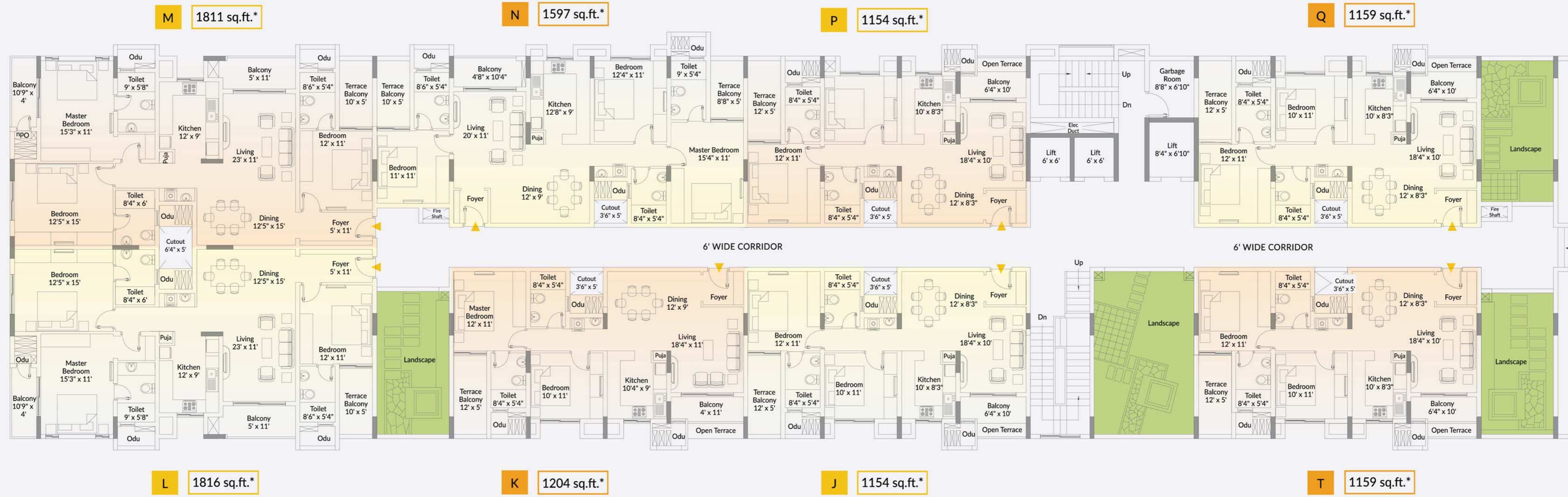




\*RERA CARPET AREA  
 A - 791 sq.ft. | B - 1193 sq.ft. | C - 1193 sq.ft. | D - 1075 sq.ft.

\*RERA CARPET AREA  
 E - 1064 sq.ft. | F - 1538 sq.ft. | G - 1537 sq.ft. | H - 791 sq.ft.





\*RERA CARPET AREA

J - 756 sq.ft. | K - 791 sq.ft. | L - 1192 sq.ft. | M - 1192 sq.ft. | N - 1066 sq.ft. | P - 756 sq.ft.

\*RERA CARPET AREA

Q - 756 sq.ft. | T - 756 sq.ft.





**M** 1831 sq.ft.\*

**N** 1617 sq.ft.\*

**P** 1176 sq.ft.\*

**Q** 1180 sq.ft.\*

**R** 1838 sq.ft.\*



**L** 1838 sq.ft.\*

**K** 1225 sq.ft.\*

**J** 1174 sq.ft.\*

**T** 1180 sq.ft.\*

**S** 1838 sq.ft.\*

\*RERA CARPET AREA

J - 756 sq.ft. | K - 791 sq.ft. | L - 1192 sq.ft. | M - 1192 sq.ft. | N - 1066 sq.ft. | P - 756 sq.ft.

\*RERA CARPET AREA

Q - 756 sq.ft. | R - 1193 sq.ft. | S - 1193 sq.ft. | T - 756 sq.ft.







M 1831 sq.ft.\*

N 1617 sq.ft.\*

P 1176 sq.ft.\*

Q 1180 sq.ft.\*

R 1838 sq.ft.\*



L 1838 sq.ft.\*

K 1225 sq.ft.\*

J 1174 sq.ft.\*

T 1180 sq.ft.\*

S 1838 sq.ft.\*

\*RERA CARPET AREA

J - 756 sq.ft. | K - 791 sq.ft. | L - 1192 sq.ft. | M - 1192 sq.ft. | N - 1066 sq.ft. | P - 756 sq.ft.

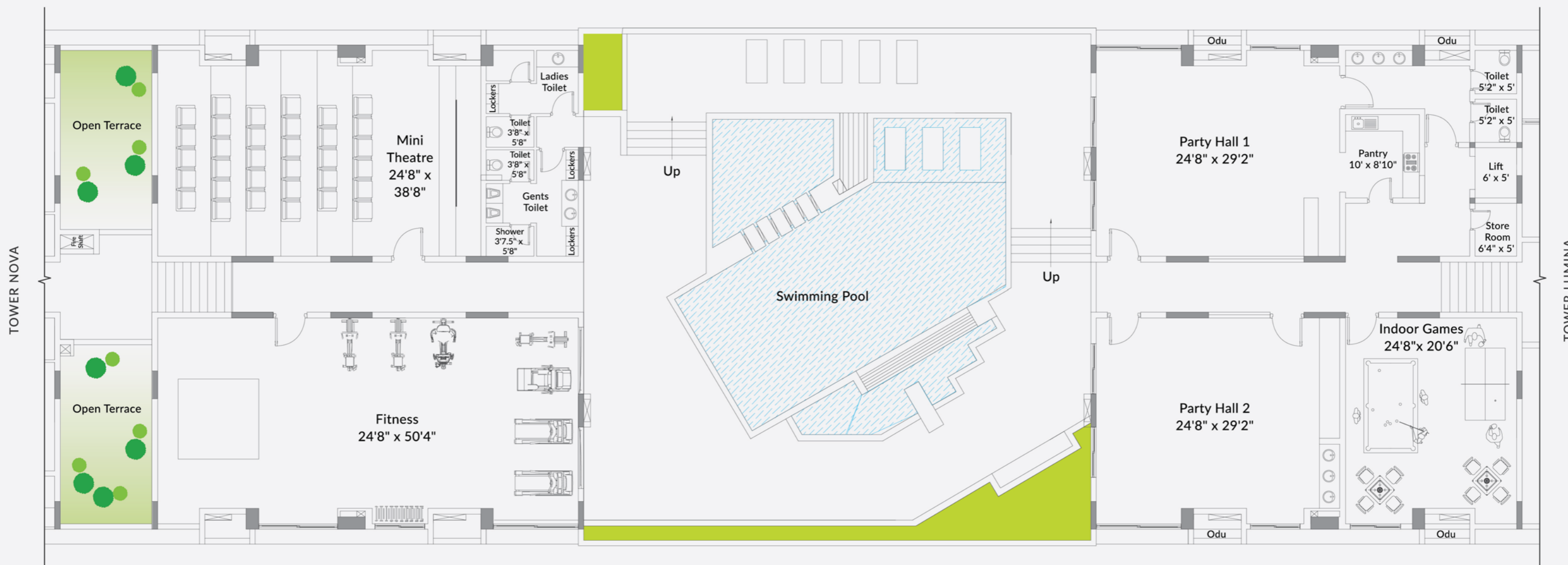
\*RERA CARPET AREA

Q - 756 sq.ft. | R - 1193 sq.ft. | S - 1193 sq.ft. | T - 756 sq.ft.



# CLUBHOUSE

## THIRD FLOOR



TOWER NOVA

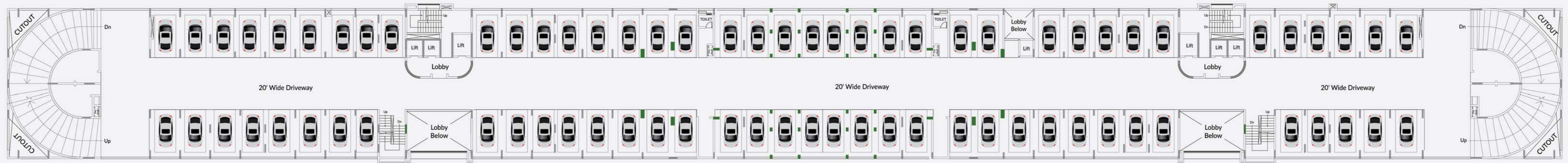
TOWER LUMINA



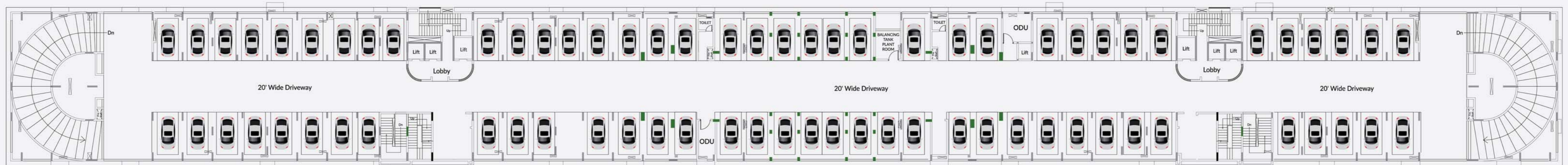
**BASEMENT PLAN**



**FIRST FLOOR**



**SECOND FLOOR**





**Corporate Office :** 3 Mangesh Street, T. Nagar, Chennai - 600 017.

Phone : 044 2434 6333 / 2434 9090 / 99620 14376 / 99620 29153

e-mail : [sales@appaswamy.com](mailto:sales@appaswamy.com) [www.appaswamy.com](http://www.appaswamy.com) Follow us on  

---

RERA Registration Number: TN/29/Building/0198/2018 dt. 14.06.2018

---