



A PROJECT BY
MIDWEST BUILDERS PVT LTD

www.midwestbuilders.in

MIDWEST
ELITA

Inspired Living

APARTMENTS • COMMERCIAL



A PROJECT BY MIDWEST BUILDERS PVT LTD



One-of-a-Kind Living

Midwest Elita at Yelahanka is an exclusive habitat passionately built by the promoters. It is a world in itself with only 46 apartments in a sprawling one-acre property. The builders spared no effort in drawing the best of brands, top class material to bring the difference in lifestyle. An uncompromising attitude is evident at every detail. Highly qualified architects and reputed engineering consultants are involved in delivering the latest designs, functional spaces and supreme luxury.

Midwest Elita emerges as a work of art worthy of appreciation.



There are times when you must transcend the mundane, the everyday, the routine. There are times when you must indulge in your flights of fancy. There are times when only the best matters and the better is not an option. For those times in your life, ladies and gentlemen, we present Midwest Elita.

Midwest Elita is inspired by your passion for excellence. In turn, it is a home that inspires you to move to the next level. Step into a premium address of exquisite apartments located in North Bengaluru. Quite simply, it's an attitude you flaunt.



Step into a distinct home





When we define every square foot and square yard, it's time you redefine your moments - at work, leisure, play and social life. These apartments are choreographed to fulfill many pursuits of life and make sure that your time is well spent. Here is where engineering blends with functionality to create a magic called Midwest Elita.



It's when life opens up to you...





- BBMP-approved project
- Mixed-use Development
- Block A: G+6 Floors with 38 Service Apartments
- Block B: G+7 with 46 High end Residential Apartments
- Block B: 3 Two BHK & 43 Three BHK Apartments
- Vastu compliant
- 1308 Sft to 2146 Sft areas
- Club facilities
- Two level parking
- 24 hr Water & electricity
- Spacious entrance lounge with Italian marble
- Water treatment plant
- 2 Nos high speed passenger lifts
- 1 No Service lift / Stretcher compatible
- Children play area
- Elegant landscaping



Step into well-defined spaces



Entrance Lounge with Italian Marble



Discover the outdoor detail



- Entry with trellis
- Seating areas
- Elegant landscaping
- Kids play area
- Paved Plaza
- Feature wall with water cascade
- Green wall & water spouts
- Wide driveways
- Sculpture & Bamboo Court
- Jogging track
- Party lawns with hedge plantation
- Potted plantation
- Security kiosk with Intercom



Midwest Elita's design brings a level of sophistication at your home made possible only by intense passion. The residences distinguish on quality construction and both indoors and outdoors set the stage for a remarkable experience enriching family relationships.

Step out of your apartment to find outdoor detail. Paved pathways, manicured landscapes, seating areas, flowering plants and shaded niches will invite you to spend quality time with your family. Avenue trees and water feature are a soothing sight. Open up and share blissful moments everyday.





De-stress yourself over an array of recreational options the club offers. Go for jogging within premises and work out a regimen at gymnasium everyday. Play a game with friends at indoor games enclave. Parties and festivals come alive at multi-purpose hall. You will find 24 hrs are filled with excitement at Elita.

Reach the terrace for leisure times in evenings. A romantic mood is set through ambient lighting, pergolas, coffee shop, stepped seating areas adorned with potted plants. The terrace is a perfect place to host parties under starlit sky. Enjoy good times with family and fill your life with countless pleasant memories.

Lead a proactive lifestyle...

- Gymnasium
- Multi-purpose hall
- Indoor games
- Conference hall
- Wellness terrace
- Yoga & Meditation hall

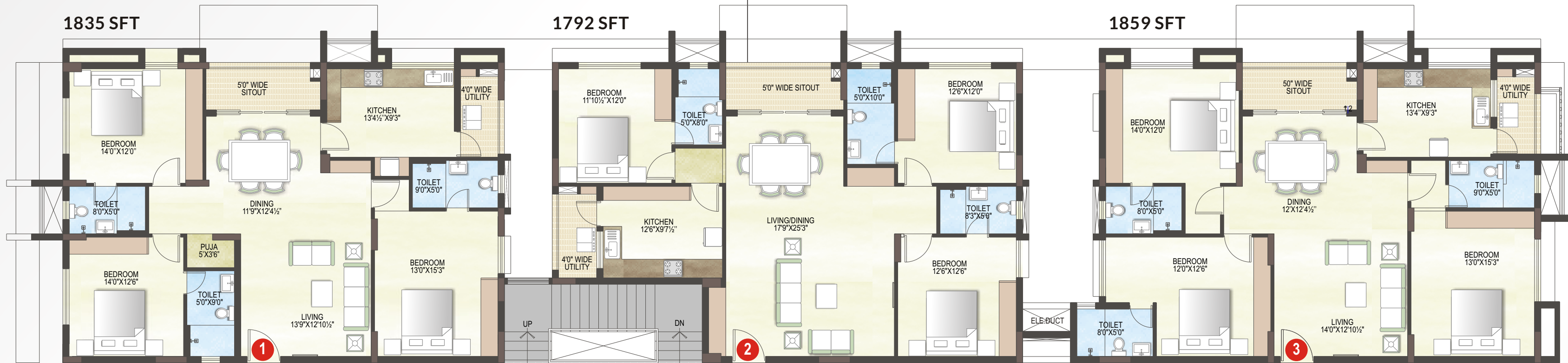




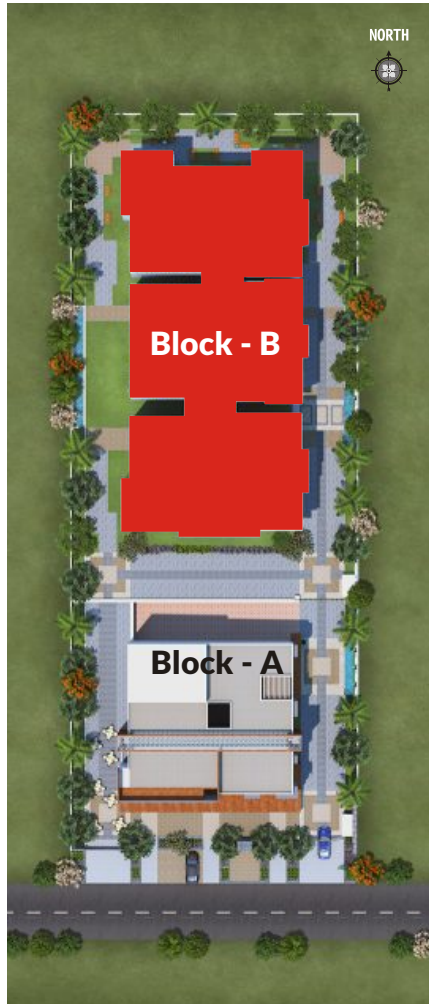
1835 SFT

1792 SFT

1859 SFT



KEY PLAN



8'6" WIDE CORRIDOR

LIFT LOBBY
18'1 1/2" x 9'6"

8'6" WIDE CORRIDOR

SERVICE LOBBY
6'3" x 15'9"

1867 SFT

1825 SFT

1867 SFT

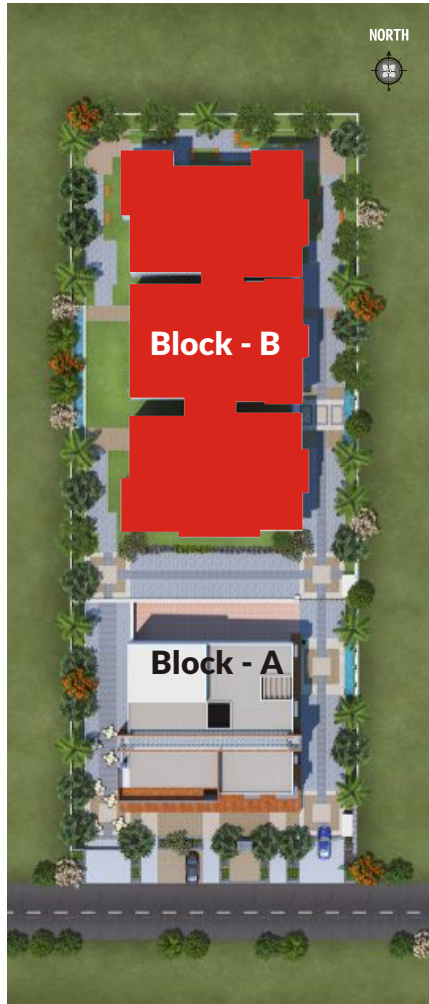


First Floor Plan
BLOCK - B





KEY PLAN

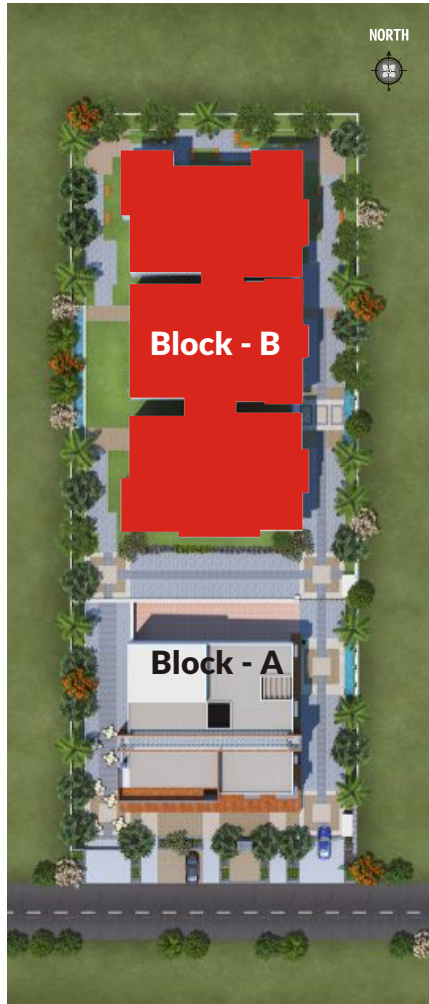


Typical Floor Plan - 2nd, 3rd & 4th
BLOCK - B





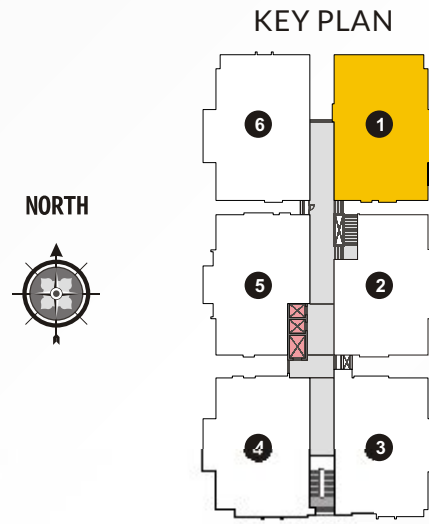
KEY PLAN



Typical Floor Plan - 5th, 6th & 7th
BLOCK - B

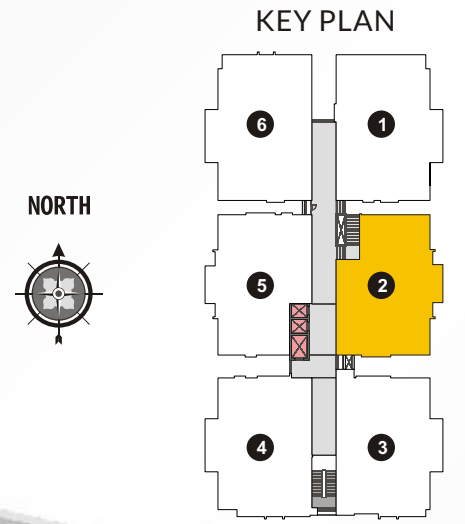


BLOCK -B
Flat - 101
First Floor

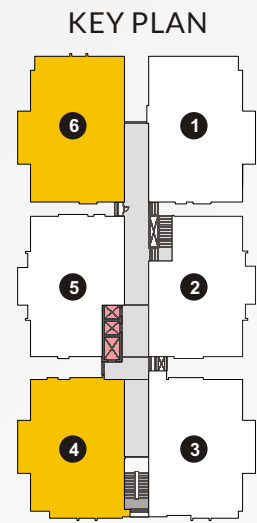


- 1 LIVING/DINING
- 2 DINING
- 3 KITCHEN
- 4 UTILITY
- 5 POOJA
- 6 BEDROOM-1
- 7 TOILET
- 8 BEDROOM-2
- 9 TOILET
- 10 BEDROOM-3
- 11 TOILET
- 12 SIT-OUT

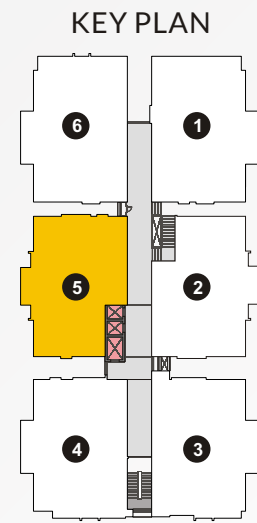
BLOCK -B
Flat - 102
First Floor



- 1 LIVING/DINING
- 2 KITCHEN
- 3 UTILITY
- 4 POOJA
- 5 BEDROOM-1
- 6 TOILET
- 7 BEDROOM-2
- 8 TOILET
- 9 BEDROOM-3
- 10 TOILET
- 11 SIT-OUT

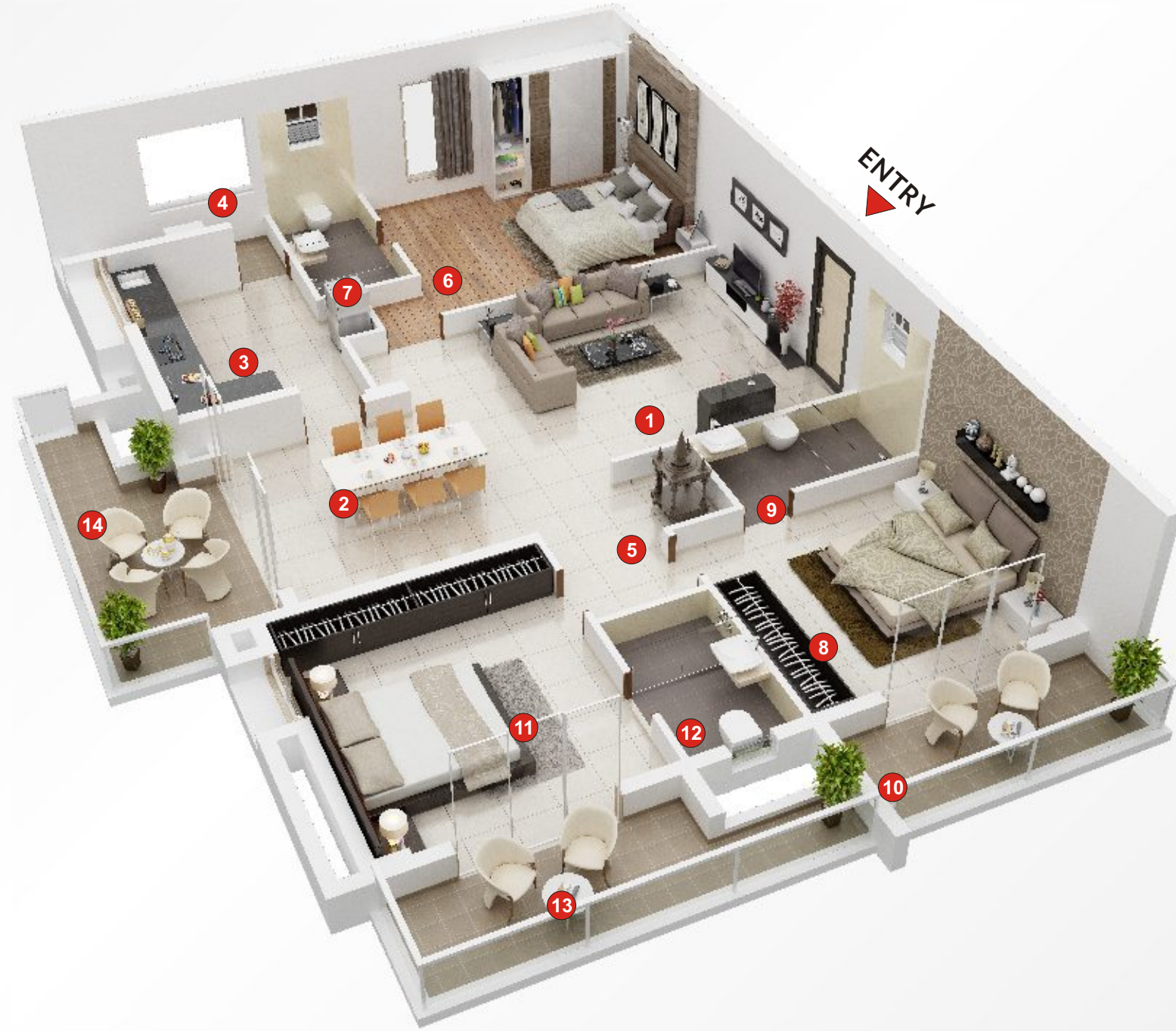
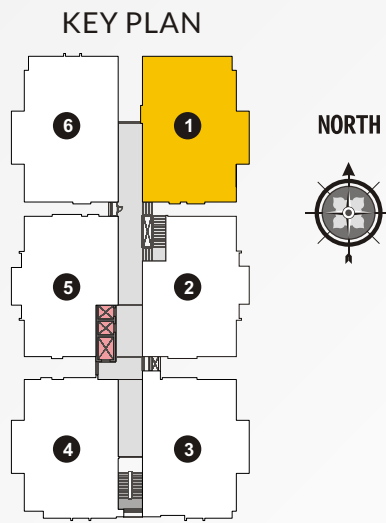


- 1 LIVING
- 2 DINING
- 3 KITCHEN
- 4 UTILITY
- 5 POOJA
- 6 BEDROOM-1
- 7 TOILET
- 8 BEDROOM-2
- 9 TOILET
- 10 BEDROOM-3
- 11 TOILET
- 12 SIT-OUT



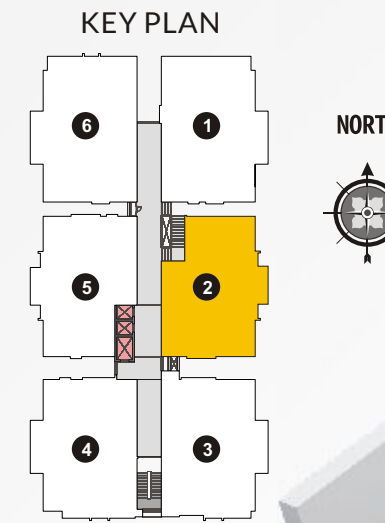
- 1 LIVING/DINING
- 2 KITCHEN
- 3 UTILITY
- 4 POOJA
- 5 BEDROOM-1
- 6 TOILET
- 7 BEDROOM-2
- 8 TOILET
- 9 BEDROOM-3
- 10 TOILET
- 11 SIT-OUT

BLOCK -B
Flat - 501, 601 & 701
Typical Floor



- 1 LIVING
- 2 DINING
- 3 KITCHEN
- 4 UTILITY
- 5 POOJA
- 6 BEDROOM-1
- 7 TOILET
- 8 BEDROOM-2
- 9 TOILET
- 10 SIT-OUT
- 11 BEDROOM-3
- 12 TOILET
- 13 SIT-OUT
- 14 SIT-OUT

BLOCK -B
Flat - 502, 602 & 702
Typical Floor

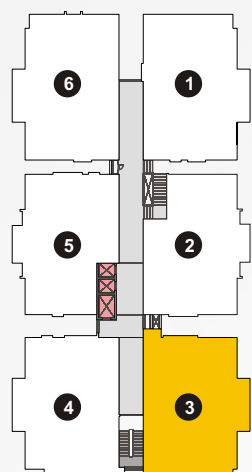


- 1 LIVING
- 2 DINING
- 3 KITCHEN
- 4 UTILITY
- 5 POOJA
- 6 BEDROOM-1
- 7 TOILET-1
- 8 SITOUT
- 9 BEDROOM-2
- 10 TOILET-2
- 11 BEDROOM-3
- 12 TOILET-3
- 13 SIT-OUT

**MIDWEST
ELITA**

BLOCK -B
Flat - 503, 603 & 703
Typical Floor

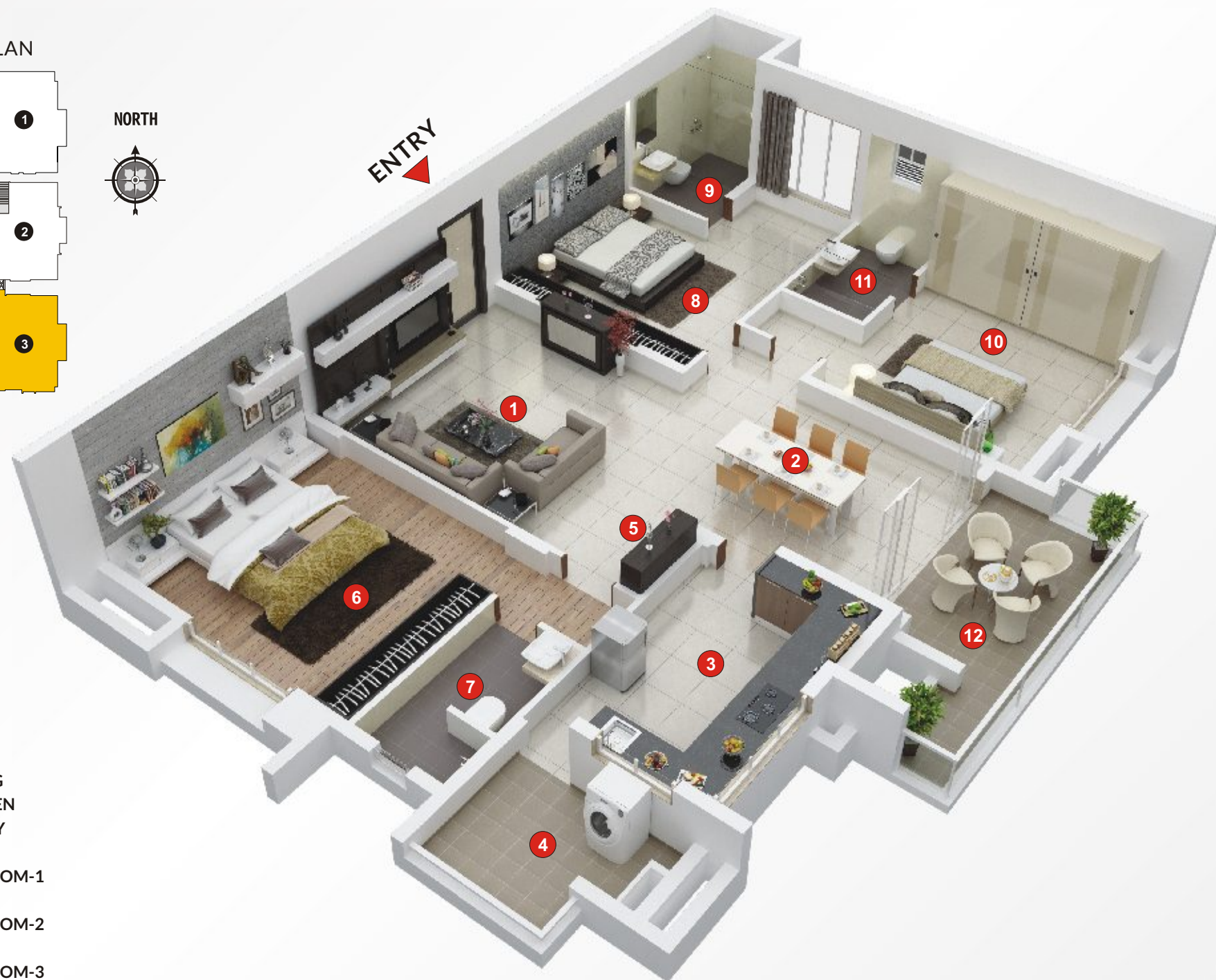
KEY PLAN



NORTH



ENTRY

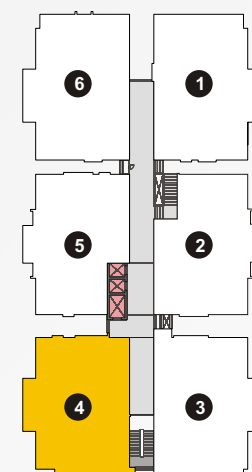


- 1 LIVING
- 2 DINING
- 3 KITCHEN
- 4 UTILITY
- 5 POOJA
- 6 BEDROOM-1
- 7 TOILET
- 8 BEDROOM-2
- 9 TOILET
- 10 BEDROOM-3
- 11 TOILET
- 12 SITOUT

**MIDWEST
ELITA**

BLOCK -B
Flat - 504, 604 & 704
Typical Floor

KEY PLAN



NORTH



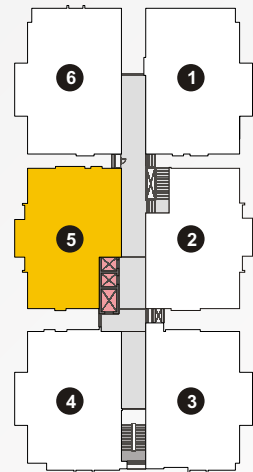
ENTRY



- 1 LIVING
- 2 DINING
- 3 KITCHEN
- 4 UTILITY
- 5 POOJA
- 6 BEDROOM-1
- 7 TOILET
- 8 BEDROOM-2
- 9 TOILET
- 10 BEDROOM-3
- 11 TOILET
- 12 SITOUT

BLOCK -B
Flat - 505, 605, 705
Typical Floor

KEY PLAN



NORTH



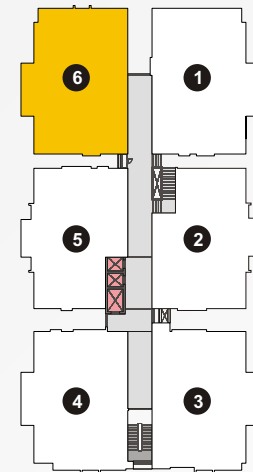
ENTRY



- 1 LIVING
- 2 DINING
- 3 KITCHEN
- 4 UTILITY
- 5 POOJA
- 6 BEDROOM-1
- 7 TOILET
- 8 BEDROOM-2
- 9 TOILET
- 10 BEDROOM-3
- 11 TOILET
- 12 SIT-OUT
- 13 BALCONY

BLOCK -B
Flat - 506, 606 & 706
Typical Floor

KEY PLAN



NORTH



ENTRY



- 1 LIVING
- 2 DINING
- 3 KITCHEN
- 4 UTILITY
- 5 POOJA
- 6 BEDROOM-1
- 7 TOILET
- 8 SIT-OUT
- 9 BEDROOM-2
- 10 TOILET
- 11 SIT-OUT
- 12 BEDROOM-3
- 13 TOILET
- 14 SIT-OUT

Specifications



STRUCTURE

Two basements and G+7 floor RCC framed structure with Seismic zone II compliance.
Concrete solid block masonry.

FLOORING

Entrance lounge with imported Italian marble.
Granite & vitrified tiles in combination at all Lift lobbies and corridors as well as in staircase.
Laminate wooden flooring in master bedroom only.
600mm x 600 mm first quality vitrified tiles in living, dining, kitchen and in all other bedrooms.
300mm x 300mm Anti-skid ceramic tiles in toilets, balcony & utility area.

DOORS

Main door of polished African Teak wood frame with both side Teak finish polished shutters.
Other internal door of hard wood frame with both side Teak finish polished shutters.
Toilet door of hard wood frame with single side Teak finish polished shutters.

WINDOWS

System Aluminum / UPVC 3-track sliding windows from reputed make & Sliding door for balconies with mosquito mesh shutter provision.
Enamel coated M.S safety grills for windows.

TOILETS

Designer ceramic tiles for wall cladding up to 7 feet height in all toilets.
Chromium plated fittings of Jaquar or equivalent make.
Hot & cold water mixer for washbasin for master bedroom toilet only.
Hot & cold water single lever diverter / wall mixer with shower arm & shower head.
External wall hung with concealed flush tank for master bedroom toilet only. Floor mount water couple closet for other toilets.
Sanitary wares in all toilets are of Parryware/ Jaquar / Cera or equivalent.
Provision for geysers in all toilets.
Provision of exhaust fan in all toilets.

KITCHEN

Granite platform with stainless steel single bowl sink from reputed brand like Nirali, Franke or equivalent make with drain board.

ELECTRICAL

Power outlet for air-conditioners in master and children's bedroom.
Power outlet for chimney, exhaust fan, water purifier, mixer/ grinder and provision for hob in kitchen.
Fire resistant electrical wires of Finolex / L&T or equivalent make.
Modular electrical switches of Legrand / Schneider or equivalent make.
TV and telephone points in living and master bedrooms only.
2 BHK apartments with 3KW power supply & 3 BHK with 6 KW.
All apartments with 1 KW DG back up power.
100% DG power back up for lifts, pumps & common area lighting.

PLUMBING

Water supply lines of C-PVC for hot and cold water
PVC sewer lines for S.W.R drainage system.

LIFTS

2 No's of high speed lift. Otis/Kone/Schindler and
1 No service lift / Stretcher lift as per standard features with automatic rescue device and over speed governor etc.

PAINTING

Interior painting with plastic emulsion over two coats of putty and primer.
Acrylic emulsion paint over texture for selective places as per design for exterior fascia.

OTHER'S

CCTV surveillance for common areas.
Fiber to the Home - voice & data.
STP and WTP installed as per project requirement.
Garbage collection with bifurcation of dry and wet waste at basement.

COMMON CLUB HOUSE WITH FOLLOWING AMENITIES FOR APARTMENTS

Multipurpose hall with pantry.
Gym.
Children Play Area - Outdoor
Landscaped greenery.
Vastu compliant.

Yelahanka is one of the fastest growing destinations in North of Bengaluru city. The IAF Base, an Escorts plant, the burgeoning Industry and the biennial Aero India Shows bring a vibrant social life to its residents. The Hebbal flyover enables the residents to reach the city in a short period of time. The Bengaluru International Airport (BIA) has catalyzed the residential development in North Bengaluru rapidly.

DISTANCES FROM SITE

DPS	3.2 Kms	5 Min drive
Vidya Shilp	6.0 Kms	10 Min drive
Yelahanka	6.5 Kms	10 Min drive
Hebbal Junction	8 Kms	15 Min drive
Manyata Tech Park	9.5 Kms	15 Min drive
Elements Mall	10 Kms	15 Min drive
Mekhri Circle	16 Kms	20 Min drive
Kempegowda International Airport	18 Kms	25 Min drive

All within 10 minutes



**MIDWEST
ELITA**



Midwest Builders Pvt Ltd is committed to deliver quality lifestyles to discerning customers. Integrated design, supreme quality and greenery symbolize all their projects undertaken in Bengaluru and Visakhapatnam. A track record of innovative designs, professional management and on-time delivery makes Midwest Builders the first choice among customers.

Delivering on Promises

Promoters



MIDWEST BUILDERS PVT LTD

171/1, Dwarakanagar, Kategenahalli, Baglur Main Road

Bangalore North - 560 063

www.midwestbuilders.in

Tel: 080 - 2847 8145, 2847 8146

Principal Consultants

Architectural Consultants



Vistaas Architectural Consultants
MUMBAI • HYDERABAD • PUNE • VIZAG

Mr. Suresh Kottapalli, B. Arch
Email: vistaashyderabad@gmail.com
www.vac-india.com

Ochre Architects
www.ochre.in

Structural Consultant
Anagha Engineering Consultants
www.anaghablr.com

Electrical Consultant
S & Su Associates
Email: guptassconsultant@yahoo.co.in

Plumbing, Fire Protection & Treatment Plants
Prism
www.prismconsultancy.net

Landscape Consultant
Upasarg
Email: admin@upasarg.com





MIDWEST BUILDERS PVT LTD

Note: This brochure is purely a conceptual presentation and not a legal offering. The promoters reserve the right to make changes in elevation, specifications and plans as deemed fit.