



Piramal
revanta

Mulund, Mumbai

piramalrevanta.com

Piramal Realty

Founded in 2012, Piramal Realty is the real estate development arm of the Piramal Group. Piramal Realty aspires to be one of India's most admired real estate companies, by setting the highest standards for architectural design, customer centricity, quality and safety. Piramal Realty secured approximately US\$ 434 million in funding from global private equity firms - Goldman Sachs and Warburg Pincus, making it one of the largest private equity investments in Indian real estate.

Mulund

Known as the Prince of the Suburbs, Mulund is rooted in thousands of years of history. Whether through its days as an outpost of the Mauryan empire, its position as the centre of the industry or its growth into a contemporary destination, Mulund has witnessed a confluence of cultures and has grown to become one of the most well-planned, dynamic suburbs of Mumbai.



Piramal Revanta

Piramal Revanta presents a new style of contemporary luxury lifestyle in Mulund, the new cultural, financial and commercial heart of Mumbai. An urban oasis away from the hustle of the city, the modern high-rise Revanta towers sit on the edge of the 25,000-acre Sanjay Gandhi National Park, with expansive views across the lush greenery of the Yeoor Hills.

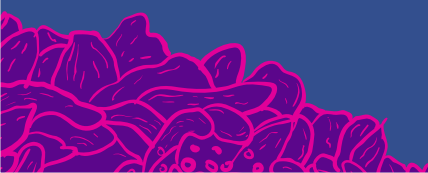
BUILT ACROSS
~12 ACRES

UP TO
**60
STOREYS**

OVERLOOKING
A **25,000
ACRE**
NATIONAL PARK

Furnished
Studio and
1, 2, 3
- BED
RESIDENCES

3.1 METRES
FLOOR-TO-
FLOOR HEIGHT



Amenities & Facilities*

- Cycling & Jogging Tracks
- Free-play Lawn for Cricket/Football
- Badminton Court
- Gymnasium
- Swimming Pool
- Kids' Pool
- Yoga and Meditation Area
- Clubhouse
- Indoor Games Room
- Children's Play Area
- Café Lounge

*Above specifications may change



Presenting Contemporary Styled Luxury Residences

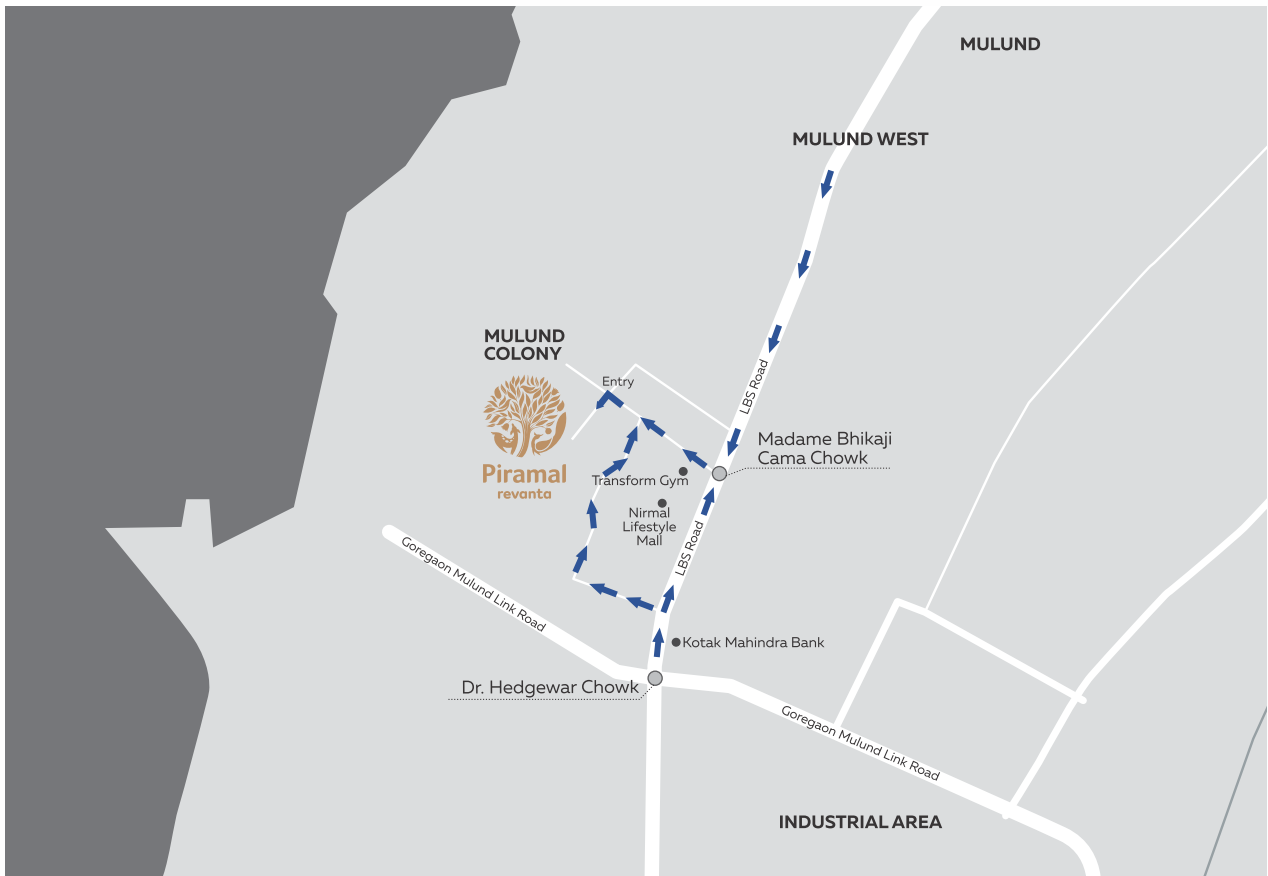
- Engineered Wooden Flooring in Master bedroom
- Agglomerated Marble in all Rooms
- Vitrified Tiles in all Bathrooms
- Video Door Phones for Additional Security
- Double-Heightened Entrance Lobby

5:95*

Exclusive Payment Plan

*T&C apply

*Offer valid for limited period only



Project Partners

- Design Architect – Kohn Pedersen Fox Associates, London, UK
- Interior Design – Wilson Associates, Los Angeles, USA
- Landscape Design – SWA Group, Dallas, USA
- Structural Engineering – BuroHappold, Mumbai, India
- Associate Architects – Sandeep Shirke and Associates, Mumbai, India
- Vertical Transport – Lerch Bates, Mumbai, India
- Façade Consultant – ALT, Manila, Philippines
- Construction Partner – Eversendai Corporation, Mumbai, India



Corporate Office

PRL Developers Private Limited
 8th Floor, Piramal Tower, Peninsula Corporate Park,
 Ganpatrao Kadam Marg, Lower Parel, Mumbai – 400 013 Maharashtra, India

+91 22 6216 6216 | piramalrevanta.com

RERA Registration no: Tower-1: P5180005983 | Tower-2: P51800014021
 MahaRERA website: <https://maharera.mahaonline.gov.in>

Disclaimer: As of May 1, 2017, the Real Estate Regulatory Act (RERA) has come into effect in the state of Maharashtra. Designed to bring about standardisation and transparency across stakeholders in the real estate industry, the Act required developers to undertake certain processes, including updating their marketing collaterals. Since inception, we at Piramal Realty have been operating in accordance with the highest standards of transparency and integrity and are currently updating our marketing collaterals to further align with RERA guidelines. By reading this, the customer confirms the information in this brochure is for informational purposes only. Nothing stated here constitutes advertising, marketing, booking, selling or an offer for sale, or invitation to purchase a unit in any project by the Company. Please get in touch with our sales team for updated project information, before making a purchase decision. The Company is not liable for any consequence of any action taken by the customer relying on such material/information. For any information, please contact our sales team, at +91 22 6216 6216 or email: sales.prl@piramal.com