



SWATI

CHRYSANTHA

3 BHK MODERN APARTMENTS & RETAIL

chrysantha : the flower

belonging to the edgeworthia genus, chrysantha is a species of flower that derives its name from its golden colour (chrysa meaning gold and anthos meaning flower). the bark fibres of this tree are also used for the making of traditional tissue called mitsumata due to which the plant is also referred to as the oriental paper brush or mitsumata.



CHRYSANTHA

the project reflects a renewed freshness, colour vibrancy and a happy inclusive growth.

with a refreshed identity for swati procon as a company ready for the future, a standardisation of many operational aspects are put into practice. along with this, a new identity and brand standardisation is implemented for better recall besides a system of adopting a specific 'flower-tree' based nomenclature for its ongoing and future projects.



LIFE & BEYOND

**“ life is about finding yourself.
life is about creating yourself ”**
- george bernard shaw



GROWTH & BEYOND

**“ growth is never by mere chance ;
it is the result of forces working together ”**
- james cash penney

LIFE & GROWTH

AT CHRYSANTHA

this well planned project isn't just well designed, but it's well positioned location-wise.

shella is fast getting popular due to its connectivity and that means better opportunity for growth and a better future.

this translates into a new life of convenience, progressive amenities and affordable accessibility.

chrysantha at shella comes with the swati procon promise as this is a well explored segment for the group, we at swati, insist on 'people-centric' design of apartments, approach and amenities that are apt for today's smaller focused families, to all our top consultants involved.

we provide for many simpler common sense aspects that stem from sensitivity rather than just cost inflationary additions.

chrysantha, along with its retail space provides for convenience while leaving ample time to nourish growth.





SWATI
CHRYSANTHA

3 BHK MODERN APARTMENTS & RETAIL



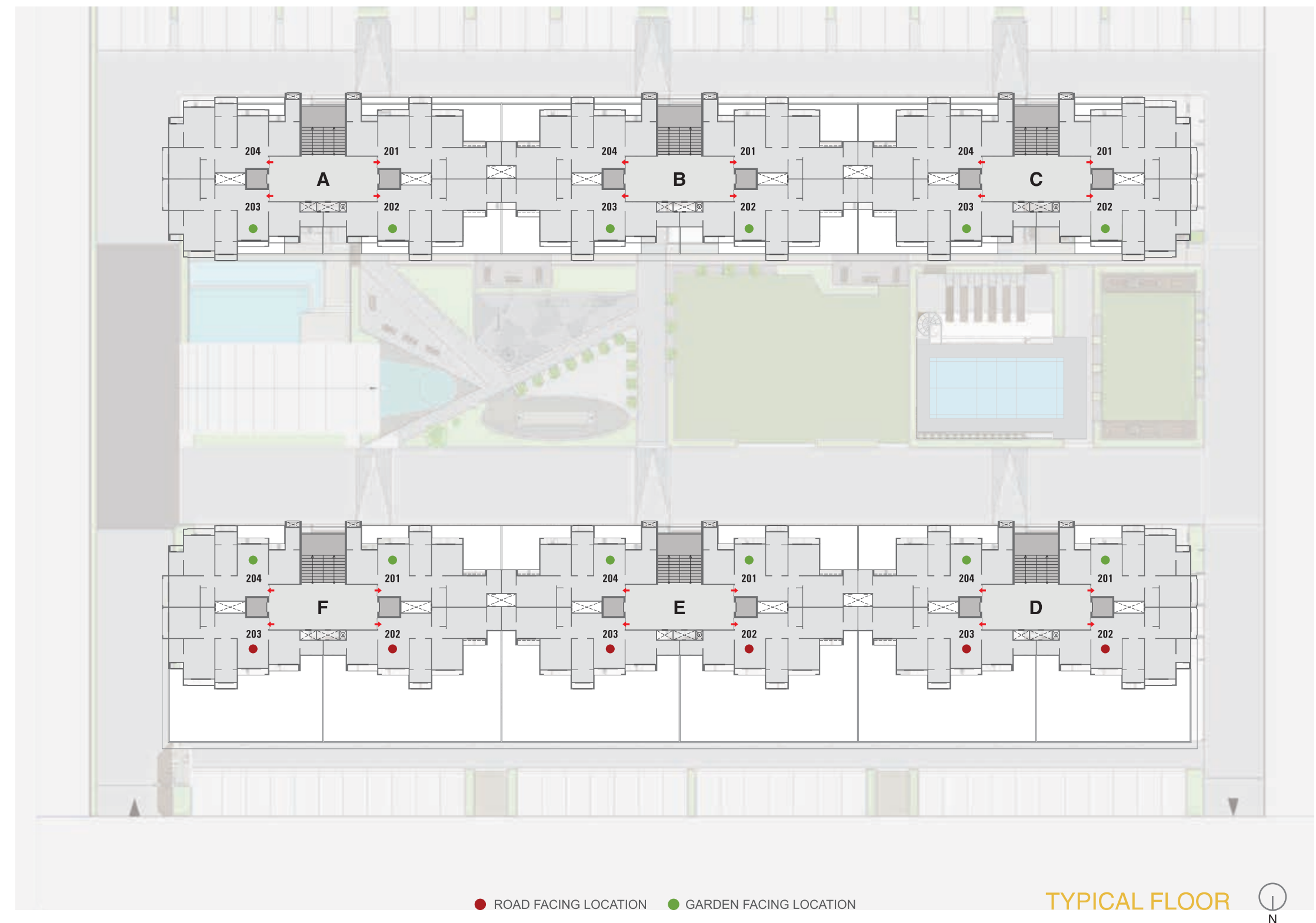


18.00 MT. WIDE ROAD

GROUND FLOOR







TYPICAL FLOOR



AMENITIES

MULTI-PURPOSE COURT

SWIMMING POOL

TODDLERS SWIMMING POOL

GYMNASIUM & HEALTH CENTRE

BOX CRICKET

INDOOR GAMES

WELL LANDSCAPED GARDEN

CHILDREN PLAY AREA

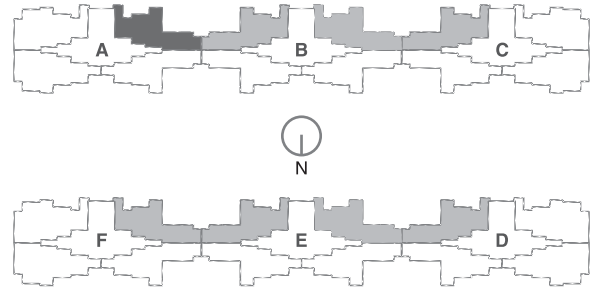
INDOOR TODDLERS ACTIVITY AREA

MINI BASKETBALL COURT

BANQUET WITH KITCHEN

LIBRARY

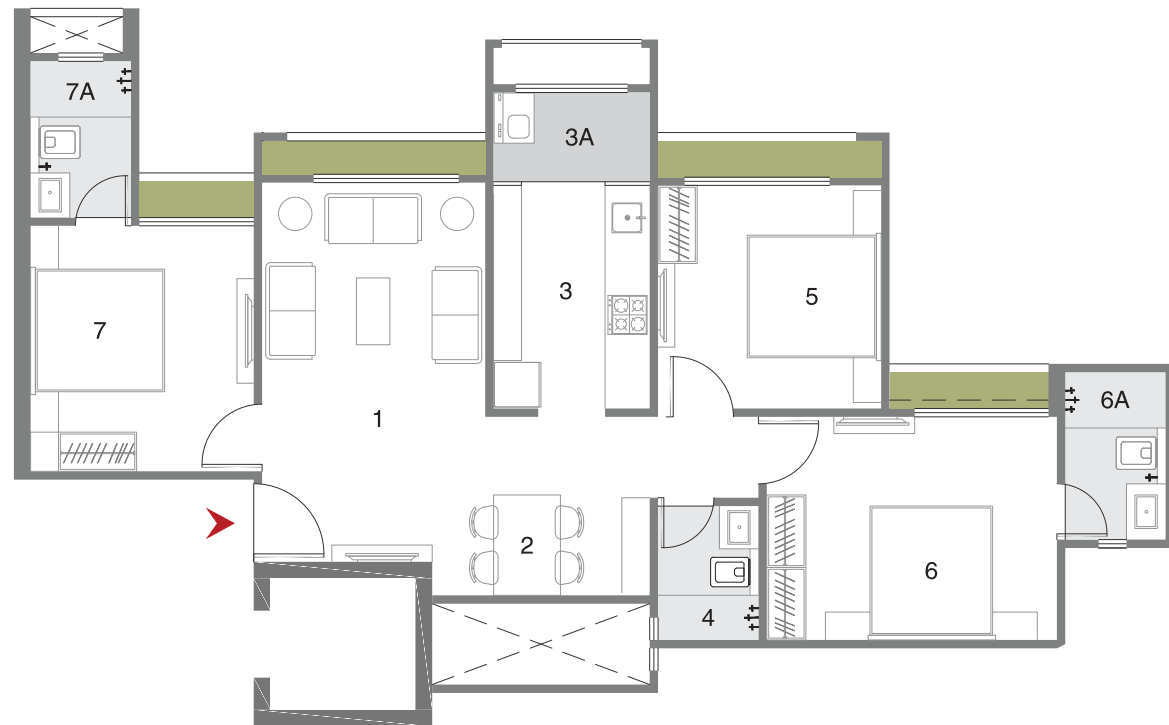




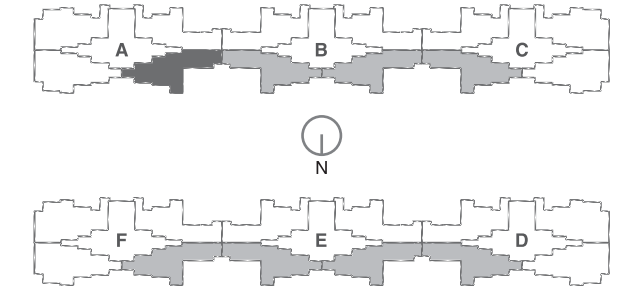
BLOCK	UNIT
A	101
B	101, 104
C	104
D	204
E	201, 204
F	201

BLOCK-A
UNIT PLAN - 101
TYPE - 01

NO	SPACES	AREA
1	LIVING	10'0"X17'0"
2	DINING	9'9"X8'0"
3	KITCHEN	7'0"X10'0"
3A	WASH	7'0"X4'0"
4	COMMON TOILET	4'6"X6'0"
5	BEDROOM-01	10'0"X10'0"
6	BEDROOM-02	13'0"X10'0"
6A	TOILET	4'6"X7'6"
7	BEDROOM-03	10'0"X11'0"
7A	TOILET	4'6"X7'0"

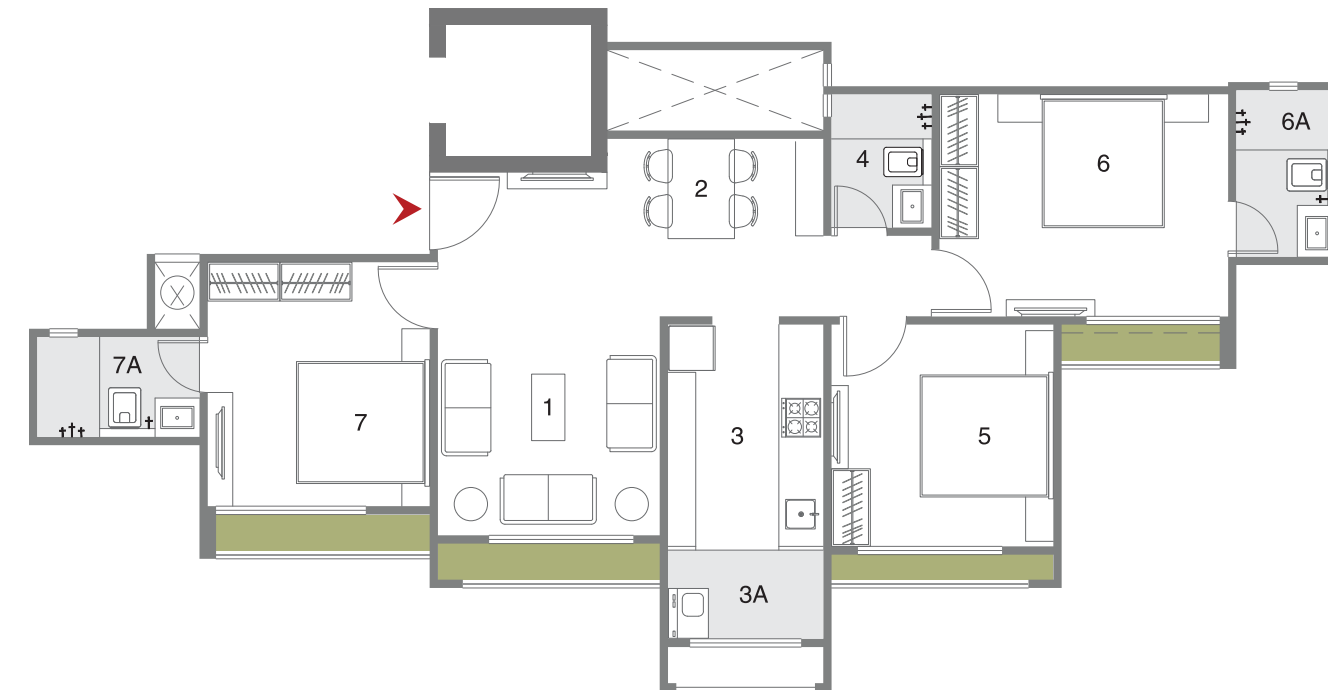


BLOCK	UNIT
A	102
B	103, 102
C	104
D	203
E	202, 203
F	202

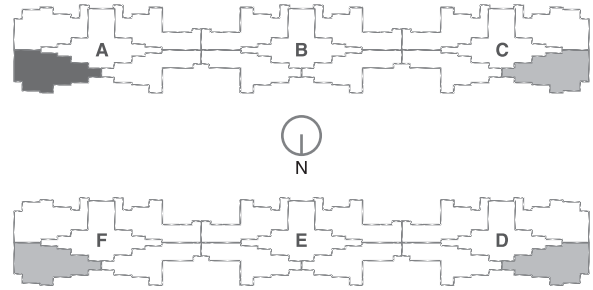


BLOCK-A
UNIT PLAN - 102
TYPE - 02

NO	SPACES	AREA
1	LIVING	10'0"X16'5"
2	DINING	9'9"X8'0"
3	KITCHEN	7'0"X10'0"
3A	WASH	7'0"X4'0"
4	COMMON TOILET	4'6"X6'0"
5	BEDROOM-01	10'0"X10'0"
6	BEDROOM-02	10'0"X13'0"
6A	TOILET	4'6"X7'6"
7	BEDROOM-03	10'0"X11'0"
7A	TOILET	7'4"X4'6"



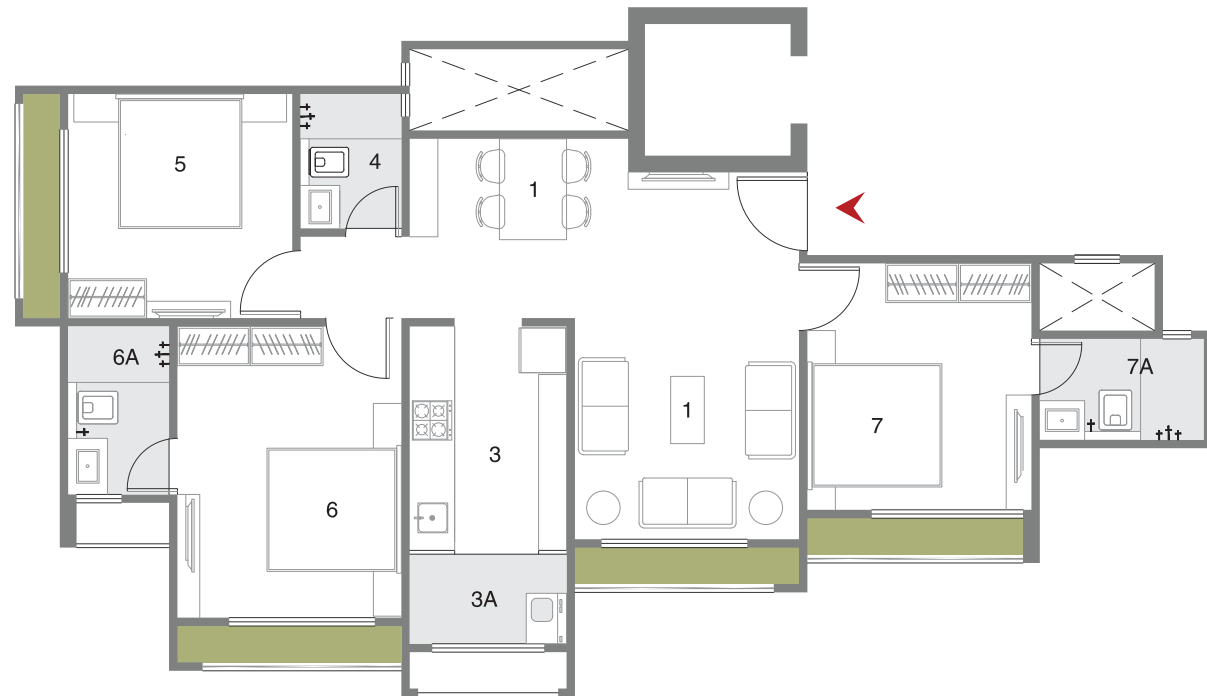




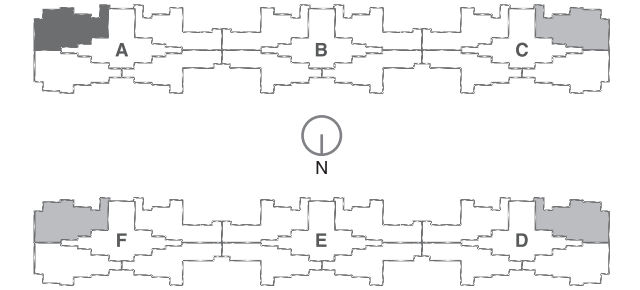
BLOCK	UNIT
A	103
C	102
D	202
F	203

BLOCK-A
UNIT PLAN - 103
TYPE - 03

NO	SPACES	AREA
1	LIVING	10'0"X16'5"
2	DINING	9'9"X8'0"
3	KITCHEN	7'0"X10'0"
3A	WASH	7'0"X4'0"
4	COMMON TOILET	4'6"X6'0"
5	BEDROOM-01	10'0"X10'0"
6	BEDROOM-02	10'0"X13'0"
6A	TOILET	4'6"X7'6"
7	BEDROOM-03	10'0"X11'0"
7A	TOILET	7'4"X4'6"



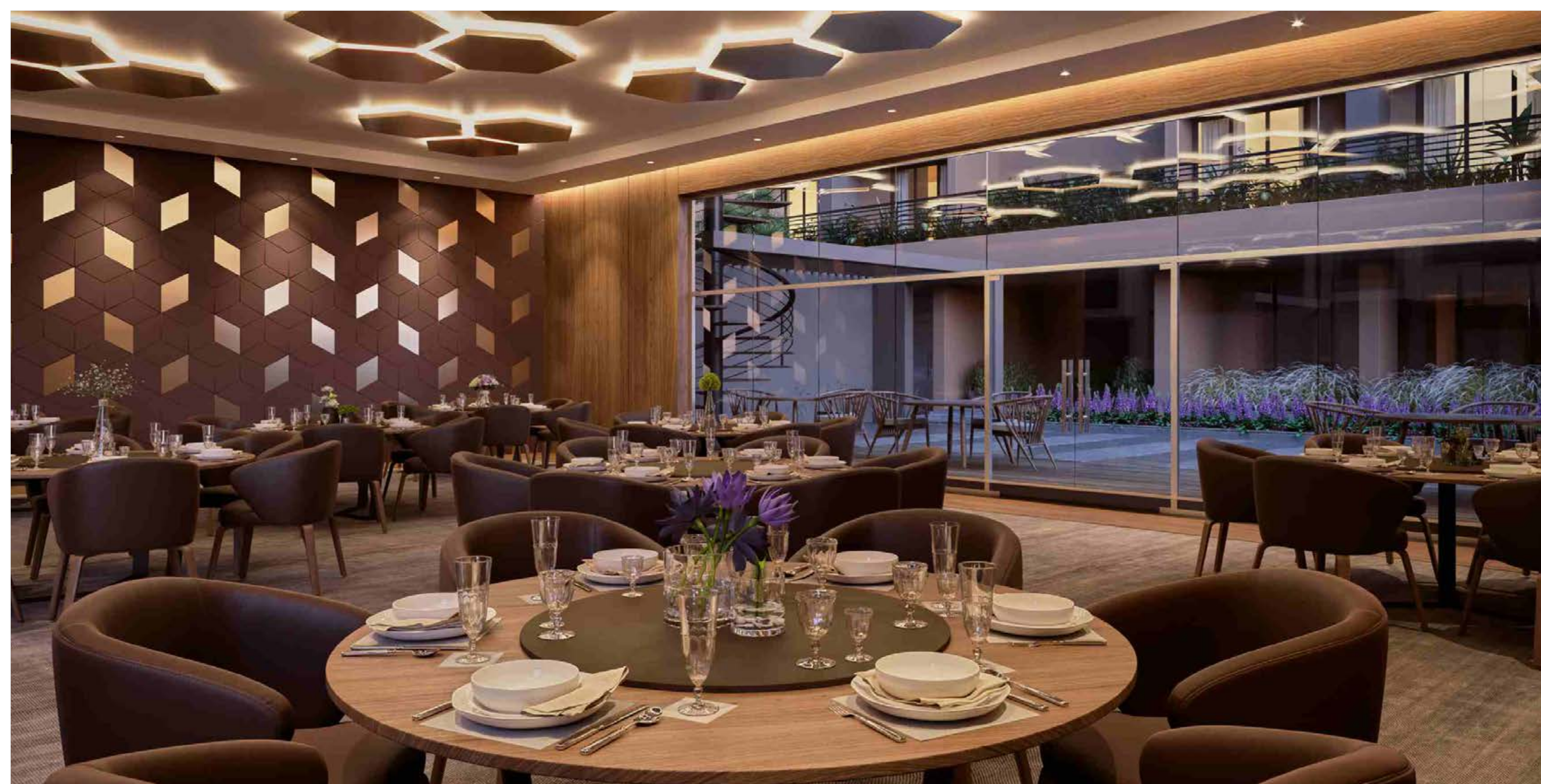
BLOCK	UNIT
A	104
C	101
D	201
F	204



BLOCK-A
UNIT PLAN - 104
TYPE - 03

NO	SPACES	AREA
1	LIVING	10'0"X17'0"
2	DINING	9'9"X8'0"
3	KITCHEN	7'0"X10'0"
3A	WASH	7'0"X4'0"
4	COMMON TOILET	4'6"X6'0"
5	BEDROOM-01	10'0"X10'0"
6	BEDROOM-02	10'0"X13'0"
6A	TOILET	4'6"X7'6"
7	BEDROOM-03	10'0"X11'0"
7A	TOILET	4'6"X7'0"







STANDARD SPECIFICATIONS

FLOORING Living / Dining / Bedrooms	Vitrified Tiles
MASTER BEDROOM	Wooden Flooring
KITCHEN	Vitrified Tiles Granite Platform with S.S. Sink
BALCONY	Ceramic / Rustic Tiles
DOORS	Main door - Natural Veneer Polished Others will be Flush Doors with Oil Paint
WINDOWS	Sliding Aluminium Windows
TOILETS	Glazed / Ceramic Tiles up to Lintel Level Counter Basin / Wall Hung Basin EWC Couple Closet CP Brass Fittings — Jaquar or Equivalent
ELECTRIFICATION	Concealed Copper Wiring with Modular Switches MCB Distribution Panel
COLOUR	Internal : Putty Finish External : 100% Acrylic paint

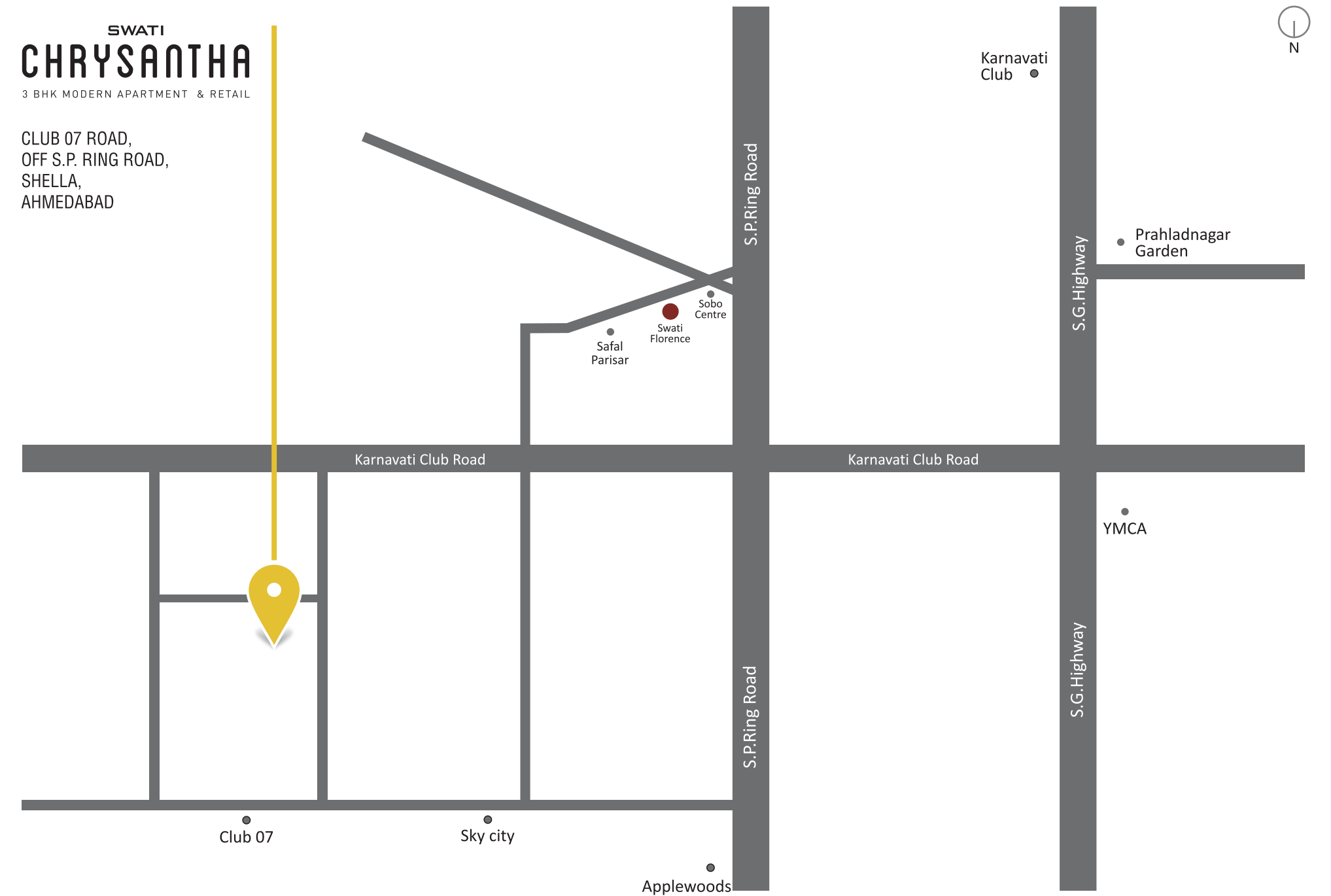
SALIENT FEATURES

- Well-Designed Entrance Foyers
- Security Campus Under CCTV Surveillance
- One Car Parking with Each Apartment
- DTH Satellite TV Connection
- Complete EPABX Connection
- Power Generator Backup for Emergency
- House Built Around Large Courtyard Facilitating Activities for all Age Groups
- Wide Internal R.C.C. Roads with Internal Designed Stone Paving
- Ample Car Parking
- Lush Green Environs with Beautiful Landscaping & Sit Outs

SWATI CHRYSANTHA

3 BHK MODERN APARTMENT & RETAIL

CLUB 07 ROAD,
OFF S.P. RING ROAD,
SHELLA,
AHMEDABAD



Notes: - Plans, Specifications and Amenities are subject to change without prior notice. - This brochure is just for an easy presentation and should not to be treated as a legal document. - The entire dimension given is approximate & unfinished. - The details, facts, specifications and amenities are mentioned are indicative for information purpose only and are subject to modification/compliance required as per RERA Act.



11TH FLOOR, SIGNATURE ONE, NEAR DIVYA BHASKAR HOUSE, S.G. HIGHWAY, AHMEDABAD. PH : 9909040084

SALES INQUIRY : 9978441445 | SWATIPROCON.COM |   

RERA REGISTRATION NUMBER : PR/GJ/AHMEDABAD/SANAND/AUDA/MAA01865/050318