

VGN BRENT PARK

PLOTS WITHIN CHENNAI CORPORATION LIMITS

POSSIBLE!

OWNING A LAND
JUST 5 KMS.
FROM ANNA NAGAR

RANGING FROM 646 SQ. FT. TO 2500 SQ. FT.



Ambattur
Telephone
Exchange

0.5 Km



Ambattur
Industrial
Estate

1 Km



Ambattur
Bus Terminus

1 Km



TI
School

1 Km



Indiabulls
Park

2 Kms



Ambattur
Railway Stn.

3 Kms



Padi
Flyover

4 Kms



Stedeford
Hospital

4 Kms



Anna
Nagar

5 Kms



28/2017



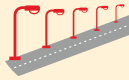





TN/02/Layout/
003/2017

UP TO
80%
BANK LOAN
FACILITATED



VGN BRENT PARK
PLOTS WITHIN CHENNAI CORPORATION LIMITS

- 
READY FOR CONSTRUCTION
- 
SOLID BLACKTOP ROADS
- 
LED STREET LIGHTS
- 
ARCHITECT DESIGNED - WELL DEVELOPED PARK
- 
NATIVE AVENUE TREES
- 
GROUND WATER



ARCHITECT DESIGNED - WELL DEVELOPED PARK



AMPHITHEATRE



LED STREET LIGHTS

ABOUT VGN

Established in the year 1942, VGN has successfully carved a niche for itself in the ever-dynamic real estate industry over the last 75 years. An ISO 9001:2008 certified company, VGN is known as much for its beautiful, world-class homes as it is for following best practices in the industry, being an IMS certified company.

With over 20 million sq. ft. of residential projects under development, VGN is one of the most respected and reputed builders in Chennai. Starting with affordable housing and spreading our wings to ultra-luxury segment, we have catered to all sections of the society. Synonymous with quality, timely delivery, expertise and trust, VGN is a name that is here to stay. While we may have numerous achievements under our belt, we take pride in the fact that we have been helping thousands of families realize their dreams, providing exponential returns on their investments. And it is this satisfaction that we derive from what we do that makes us venture into newer and more challenging areas in property development.

LOANS APPROVED BY:



PROJECT FUNDED BY:
XANDER FINANCE



VGN PROPERTY DEVELOPERS PVT. LTD.

No.153, Wallace Garden, 2nd Street,
Nungambakkam, Chennai - 600 006.
For online enquiries, log on to www.vgn.in
CALL : 044 - 4343 9999

Member: **CREDAI**

CMDA APPROVAL NO: 28/2017

VGN BRENT PARK

PLOTS WITHIN CHENNAI CORPORATION LIMITS

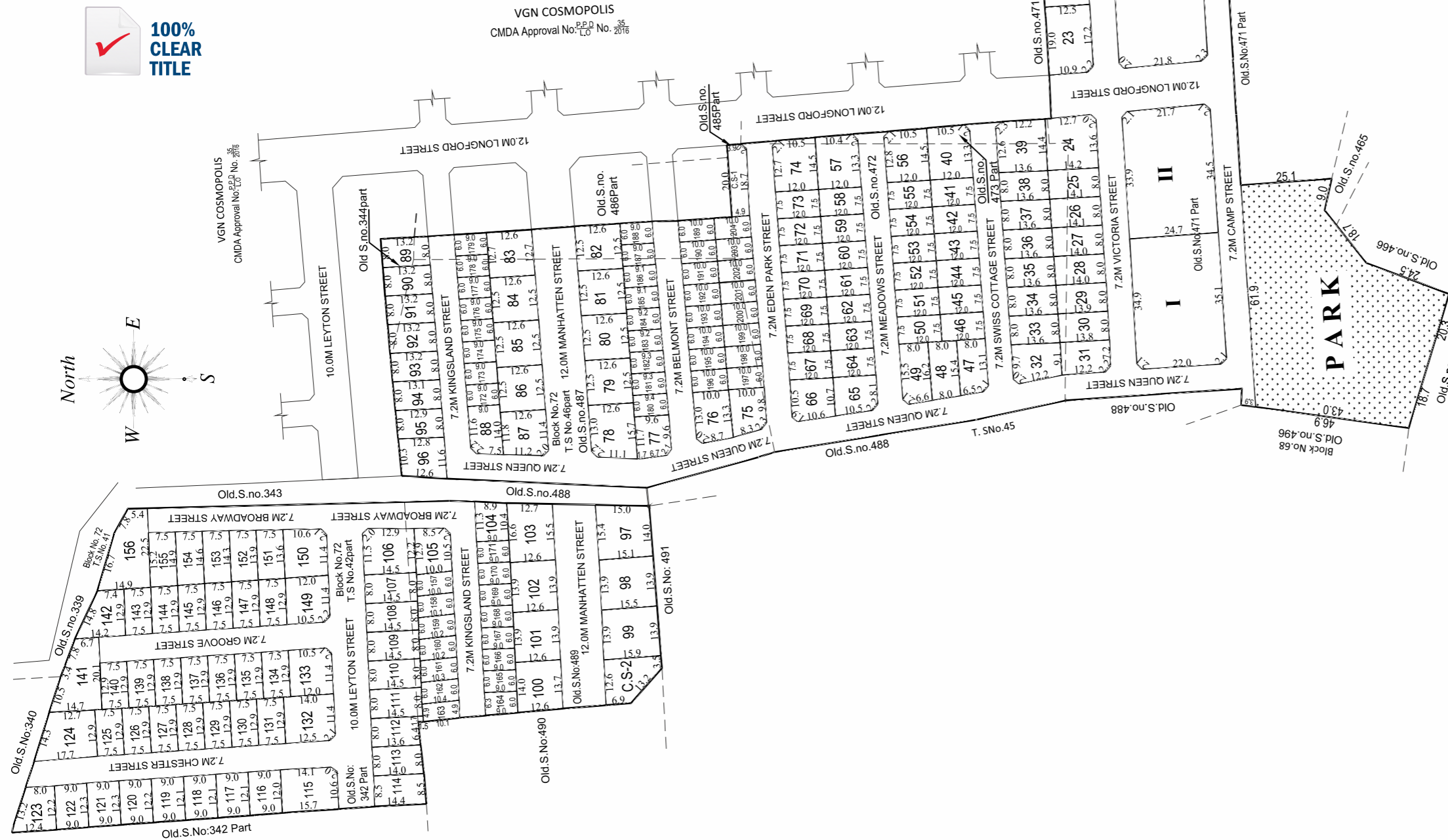
AMBATTUR VILLAGE

T.S.NO:42 Part & 46 Part IN BLOCK NO:72,
WARD-B, OLD SURVEY NOS.342 Part,
344 Part, 471 Part, 472, 473 Part,
475 Part, 485 Part, 486 Part, 487, 489.

CMDA APPROVAL NO: 28/2017



Welcome to VGN Brent Park. Exclusive plots within city limits, just 5 kms from Anna Nagar. All set, for your dream home to be built immediately. Complete with roads, parks and street lights in place, the only thing missing is your home. Come, let your home become a reality in this dream location.



LAYOUT AREA DETAILS			
PLOT NO.	AREA IN SQ. FT.	OLD SURVEY NO.	FACING
1	1192	471(P) & 475(P)	SOUTH
2	1168	475(P)	SOUTH
3	1151	475(P)	SOUTH
4	1133	475(P)	SOUTH
5	1115	475(P)	SOUTH
6	890	475(P)	EAST
7	1204	475(P)	EAST
8	1036	475(P)	EAST
9	1201	475(P)	NORTH
10	1201	475(P)	NORTH
11	1201	475(P)	NORTH
12	1201	475(P)	NORTH
13	1201	471(P) & 475(P)	NORTH
14	1342	475(P)	SOUTH
15	1224	475(P)	SOUTH
16	1220	475(P)	SOUTH
17	1220	475(P)	SOUTH
18	1220	475(P)	SOUTH
19	1220	471(P) & 475(P)	SOUTH
20	1220	471(P)	SOUTH
21	1220	471(P)	SOUTH
22	1213	471(P)	SOUTH
23	2513	471(P)	SOUTH
24	2227	471(P) & 473(P)	SOUTH
25	1220	471(P) & 472	SOUTH
26	1213	471(P) & 472	SOUTH
27	1209	471(P) & 472	SOUTH
28	1205	471(P) & 472	SOUTH
29	1201	471(P) & 472	SOUTH
30	1192	471(P) & 472	SOUTH
31	1308	471(P) & 472	SOUTH
32	1470	472	NORTH
33	1171	472	NORTH
34	1171	472	NORTH
35	1171	472	NORTH
36	1171	472	NORTH
37	1171	472	NORTH
38	1171	472	NORTH
39	2088	472 & 473(P)	NORTH
40	1876	472 & 473(P)	SOUTH
41	969	472	SOUTH
42	969	472	SOUTH
43	969	472	SOUTH
44	969	472	SOUTH
45	969	472	SOUTH
46	969	472	SOUTH
47	1270	472	SOUTH
48	1359	472	SOUTH
49	1436	472	NORTH
50	969	472	NORTH
51	969	472	NORTH
52	969	472	NORTH
53	969	472	NORTH
54	969	472	NORTH
55	969	472	NORTH
56	1841	472 & 473(P)	NORTH
57	1866	472 & 473(P)	SOUTH
58	969	472	SOUTH
59	969	472	SOUTH
60	969	472	SOUTH
61	969	472	SOUTH
62	969	472	SOUTH
63	969	472	SOUTH
64	969	472	SOUTH
65	1299	472	SOUTH
66	1447	472	SOUTH
67	969	472	SOUTH
68	969	472	SOUTH
69	969	472	SOUTH
70	969	472	SOUTH
71	969	472	SOUTH
72	969	472	SOUTH
73	969	472	SOUTH
74	179	472 & 473(P)	SOUTH
75	1279	472 & 487	SOUTH
76	1497	487	SOUTH
77	1173	487	SOUTH
78	2025	487	SOUTH
79	1695	487	NORTH
80	1695	487	NORTH
81	1695	487	NORTH
82	1695	487 & 486(P)	NORTH
83	1723	487 & 486(P)	SOUTH
84	1695	487	SOUTH
85	1695	487	SOUTH
86	1695	487	SOUTH
87	1665	487	SOUTH
88	1292	487	NORTH
89	1136	487, 486(P) & 344(P)	NORTH
90	1136	487 & 344(P)	SOUTH
91	1136	487 & 344(P)	SOUTH
92	1136	487 & 344(P)	SOUTH
93	1128	487 & 344(P)	SOUTH
94	1122	487	SOUTH
95	1105	487	SOUTH
96	1489	487	SOUTH
97	2375	489	NORTH
98	2294	489	NORTH
99	2347	489	NORTH
100	1878	489	SOUTH
101	1885	489	SOUTH
102	1885	489	SOUTH
103	2187	489	SOUTH
104	1039	489	NORTH
105	1324	489	SOUTH
106	1946	489 & 342(P)	NORTH
107	1248	489 & 342(P)	NORTH
108	1248	489 & 342(P)	NORTH
109	1248	489 & 342(P)	NORTH
110	1248	489 & 342(P)	NORTH
111	1248	489 & 342(P)	NORTH
112	1171	489 & 342(P)	NORTH
113	1186	342(P)	NORTH
114	1299	342(P)	NORTH
115	2003	342(P)	SOUTH
116	1167	342(P)	EAST
117	1172	342(P)	EAST
118	1172	342(P)	EAST
119	1172	342(P)	EAST
120	1184	342(P)	EAST
121	1192	342(P)	EAST
122	1184	342(P)	EAST
123	1361	342(P)	EAST
124	2150	342(P)	WEST
125	1041	342(P)	WEST
126	1041	342(P)	WEST
127	1041	342(P)	WEST
128	1041	342(P)	WEST
129	1041	342(P)	WEST
130	1041	342(P)	WEST
131	1041	342(P)	WEST
132	1932	342(P)	SOUTH
133	1654	342(P)	SOUTH
134	1041	342(P)	EAST
135	1041	342(P)	EAST
136	1041	342(P)	EAST
137	1041	342(P)	EAST
138	1041	342(P)	EAST
139	1041	342(P)	EAST
140	1041	342(P)	EAST
141	2336	342(P)	SOUTH
142	1496	342(P)	WEST
143	1041	342(P)	WEST
144	1041	342(P)	WEST
145	1041	342(P)	WEST
146	1041	342(P)	WEST
147	1041	342(P)	WEST
148	1041	342(P)	WEST
149	1654	342(P)	SOUTH
150	1703	342(P)	SOUTH
151	1106	342(P)	EAST
152	1131	342(P)	EAST
153	1165	342(P)	EAST
154	1187	342(P)	EAST
155	1213	342(P)	EAST
156	2573	342(P)	SOUTH
157	646	489	SOUTH
158	646	489	SOUTH
159	655	489	SOUTH
160	659	489	SOUTH
161	662	489	SOUTH
162	669	489	SOUTH
163	541	489	SOUTH
164	596	489	NORTH
165	581	489	NORTH
166	581	489	NORTH
167	581	489	NORTH
168	581	489	NORTH
169	581	489	NORTH
170	581	489	NORTH
171	581	489	NORTH
172	581	487	NORTH
173	581	487	NORTH
174	581	487	NORTH
175	581	487	NORTH
176	581	487	NORTH
177	581	487	NORTH
178	581	487 & 486(P)	NORTH
179	581	486(P)	NORTH
180	613	487	SOUTH
181	606	487	SOUTH
182	601	487	SOUTH
183	598	487	SOUTH
184	594	487	SOUTH
185	591	487	SOUTH
186	588	487	SOUTH
187	584	487 & 486(P)	SOUTH
188	581	486(P)	SOUTH
189	646	486(P)	NORTH
190	646	487 & 486(P)	NORTH
191	646	487	NORTH
192	646	487	NORTH
193	646	487	NORTH
194	646	487	NORTH
195	646	487	NORTH
196	646	487	NORTH
197	646	472 & 487	SOUTH
198	646	472 & 487	SOUTH
199	646	472 & 487	SOUTH
200	646	472 & 487	SOUTH
201	646	472 & 487	SOUTH
202	646	472 & 487	SOUTH
203	646	472, 486(P) & 487	SOUTH
204	646	472 & 486(P)	SOUTH
I	9755	471(P)	
II	9418	471(P)	
III	11471	471(P)	
CS 1	1103	472 & 485(P)	SOUTH
CS 2	1719	489	NORTH