



SOVEREIGN BUILDERS

EXPERIENCE GREAT OUTDOORS
AND PLEASANT INDOORS!!



SOVEREIGN
SANTHINIVASA
2 AND 3 BHK LUXURY APARTMENTS

CONTACT US

(+91) 90666 80744
(+91) 96864 76662





SOVEREIGN
SANTHINIVASA
2 AND 3 BHK LUXURY APARTMENTS

Mission

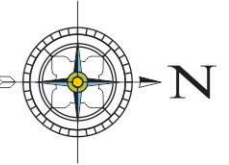
Our mission is to ensure true value to the customers in the form of residential and commercial projects with superior quality and timely possession.

Vision

To be builders of quality, developers of trust. Our vision is to develop into the most innovative and eco-friendly real estate provider with a reputation for uncompromising ethics, quality and trust worthiness.

Values

Prompt service, ethical business practices, integrity, transparency in dealings are in-built in our values.



TYPICAL FLOOR PLAN



BLOCK - D

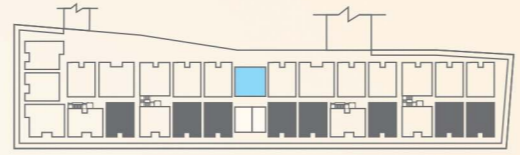
BLOCK - C

BLOCK - B

BLOCK - A



- 1 LIVING 15'10"X11'0"
- 2 DINING 9'0"X16'0"
- 3 KITCHEN 7'0"X10'6"
- 4 M.BEDROOM 11'0"X13'0"
- 5 TOILET 7'0"X5'0"
- 6 BEDROOM 10'6"X12'6"
- 7 TOILET 7'0"X5'2"
- 8 BALCONY 10'6"X4'6"
- 9 UTILITY 9'10"X4'6"

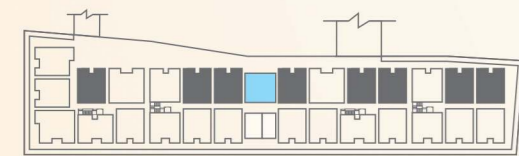


- BLOCK - A**
FLAT # 001,101, 201, 301
004,104, 204, 304
- BLOCK - B**
FLAT # 001,101, 201, 301
005,105, 205, 305
008,108, 208, 308
- BLOCK - C**
FLAT # 001,101, 201, 301
004,104, 204, 304
- BLOCK - D**
FLAT # 001,101, 201, 301

AREA - 1193.00 SFT
FACING - WEST
2 BHK



- 1 LIVING 14'0"X11'0"
- 2 DINING 16'4"X9'0"
- 3 KITCHEN 9'0"X7'0"
- 4 M.BEDROOM 11'0"X13'0"
- 5 TOILET 5'0"X8'0"
- 6 BEDROOM 10'6"X13'0"
- 7 TOILET 8'0"X5'0"
- 8 BALCONY 11'0"X4'6"
- 9 BALCONY 10'6"X4'6"
- 10 UTILITY 7'0"X4'0"

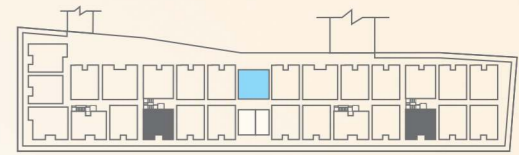


- BLOCK - A**
FLAT # 002,102, 202, 302
003,103, 203, 303
- BLOCK - B**
FLAT # 002,102, 202, 302
003,103, 203, 303
007,107, 207, 307
- BLOCK - C**
FLAT # 002,102, 202, 302
003,103, 203, 303
- BLOCK - D**
FLAT # 003,103, 203, 303

AREA - 1210.00 SFT
FACING - NORTH/EAST
2 BHK

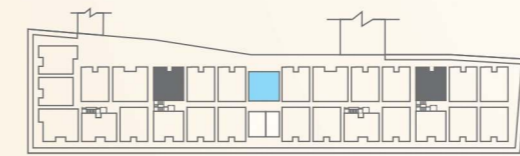


- 1 LIVING 15'4"X11'0"
- 2 DINING 12'0"X9'0"
- 3 KITCHEN 11'0"X8'6"
- 4 M.BEDROOM 14'0"X11'0"
- 5 TOILET 7'0"X5'0"
- 6 BEDROOM 10'0"X14'0"
- 7 TOILET 8'0"X4'6"
- 8 BALCONY 11'0"X4'6"
- 9 UTILITY 10'0"X4'6"



- BLOCK - A**
FLAT # 005,105, 205, 305
- BLOCK - C**
FLAT # 005,105, 205, 305

AREA - 1138.00 SFT
FACING - WEST
2 BHK

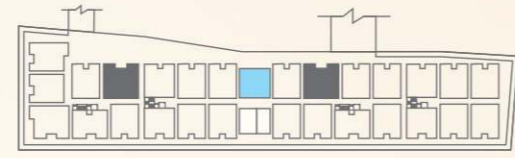


- BLOCK - A**
FLAT # 006,106, 206, 306
- BLOCK - C**
FLAT # 006,106, 206, 306

AREA - 1281.00 SFT
FACING - EAST
2 BHK

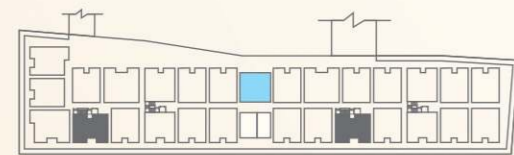


- 1 LIVING 17'0"X11'0"
- 2 DINING 18'4"X9'0"
- 3 KITCHEN 8'6"X8'0"
- 4 M.BEDROOM 13'0"X11'0"
- 5 TOILET 5'0"X7'6"
- 6 BEDROOM 11'0"X12'0"
- 7 TOILET 8'0"X5'0"
- 8 BALCONY 13'0"X4'6"
- 9 BALCONY 11'0"X4'6"
- 10 UTILITY 8'0"X4'0"



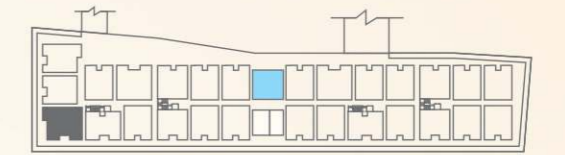
- 1 LIVING/DINING 12'0"X29'8"
- 2 KITCHEN 7'0"X11'0"
- 3 M.BEDROOM 11'0"X13'0"
- 4 TOILET 7'6"X5'0"
- 5 BEDROOM 11'0"X13'0"
- 6 TOILET 7'0"X5'0"
- 7 BEDROOM 11'0"X11'0"
- 8 BALCONY 11'0"X4'6"
- 9 BALCONY 11'0"X4'6"
- 10 UTILITY 11'0"X4'0"

BLOCK - B
FLAT # 006,106, 206, 306
BLOCK - D
FLAT # 002,102, 202, 302
 AREA - 1500.00 SFT
 FACING - EAST
 3 BHK



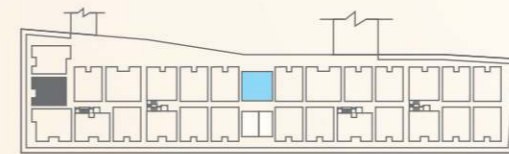
BLOCK - B
FLAT # 004,104, 204, 304
BLOCK - D
FLAT # 004,104, 204, 304
 AREA - 1206.00 SFT
 FACING - WEST
 2 BHK

- 1 LIVING 15'4"X11'0"
- 2 DINING 13'0"X12'0"
- 3 KITCHEN 10'0"X7'2"
- 4 M.BEDROOM 13'8"X11'0"
- 5 TOILET 5'0"X7'0"
- 6 BEDROOM 11'0"X12'0"
- 7 TOILET 8'0"X4'6"
- 8 BALCONY 11'0"X4'6"
- 9 UTILITY 13'4"X4'6"



- 1 LIVING 11'0"X17'4"
- 2 DINING 9'0"X14'10"
- 3 KITCHEN 8'0"X9'0"
- 4 M.BEDROOM 13'0"X12'6"
- 5 TOILET 8'0"X5'6"
- 6 BEDROOM 10'3"X12'6"
- 7 BEDROOM 12'0"X10'0"
- 8 TOILET 5'0"X6'0"
- 9 BALCONY 12'6"X4'6"
- 10 BALCONY 12'0"X4'6"
- 11 UTILITY 12'0"X4'6"

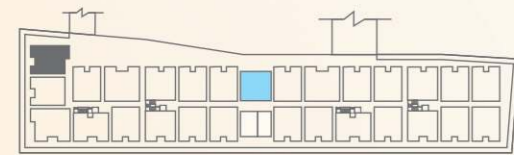
BLOCK - D
FLAT # 005,105, 205, 305
 AREA - 1506.00 SFT
 FACING - WEST
 3 BHK



BLOCK - D
FLAT # 006,106, 206, 306
 AREA - 1210.00 SFT
 FACING - NORTH
 2 BHK

- 1 LIVING 13'0"X14'10"
- 2 DINING 16'4"X9'0"
- 3 KITCHEN 11'0"X7'0"
- 4 M.BEDROOM 13'0"X11'0"
- 5 TOILET 5'0"X7'0"
- 6 BEDROOM 11'0"X12'6"
- 7 TOILET 5'0"X7'0"
- 8 BALCONY 11'0"X4'6"
- 9 UTILITY 7'0"X4'6"





BLOCK -D
FLAT # 007, 107, 207, 307

AREA - 1285.00 SFT
FACING - NORTH
2 BHK

1	LIVING	13'0"X14'10"
2	DINING	16'4"X9'0"
3	KITCHEN	11'0"X7'0"
4	M.BEDROOM	13'0"X11'0"
5	TOILET	5'0"X7'0"
6	BEDROOM	11'0"X12'6"
7	TOILET	5'0"X7'0"
8	BALCONY	11'0"X4'6"
9	BALCONY	12'6"X4'6"
10	UTILITY	7'0"X4'6"



SOVEREIGN
SANTHINIVASA
2 AND 3 BHK LUXURY APARTMENTS



FRAMED STRUCTURE:
RCC framed structure with seismic compliance resistance.

SUPER STRUCTURE:
6" Solid blocks for external walls,
4" Solid blocks for internal walls.



DOOR:
Main door: Teak wood frame with elegantly finished flush shutters,
Bedroom and kitchen doors: Hard wood door frames with one side laminated finish flush shutters.



WINDOW:
Three Track Aluminium powder coated windows with mosquito Mesh and M.S. Grills with enamel paint.



FLOORING:
Living, dining, bedroom & kitchen with Vitrified tiles (24"x24")
Bathroom: Anti skid tiles flooring with Ceramic tiles dado upto 7' height in bedroom and common toilet,
Balconies and Utilities: Antiskid ceramic tiles with water proofing treatments.

COMMON AREA:
Corridors, stair case and landing with granite.



Intercom facility



Round the clock security



CCTV Camera



Rain water harvesting



Vaastu compliance for natural light & ventilation



TOILET:
Wash basins in all bathrooms, CP Fittings of ISI make, Concealed piping system for cold and hot water with provision for geysers, Porcelain sanitary wares of reputed brand, WC of reputed brand.



KITCHEN:
Black granite kitchen platform with stainless steel sink and 2' dado above granite kitchen platform in ceramic glazed tiles, Reputed ISI make CP fittings.



PAINTING:
Interior surfaces- Emulsion paint with two coats of wall putty.
Exterior surfaces- One coat of primer and two coats of Apex paint.



ELECTRICAL:
Wiring concealed with fire resistant wires, Provision for split AC in all bedrooms, Adequate points for lights, fans and other plugs in bedrooms, toilets and kitchen with modular switches of reputed brand, Exhaust fans and geysers points in toilets and kitchen plug points for chimney, Water purifier, Refrigerator and other kitchen appliances in kitchen.



GENERATOR:
1 KVA power back-up to each apartment, Additional power back-up for lift, water pumps and common area lightings.



TELECOM:
Telephone points in living room and master bedroom, Intercom facility to all the units connecting the security.

CABLE TV:
Provision for cable connection in living room & master bedroom, TV point in living and bedrooms,



WATER SUPPLY:
24 Hours water supply from Borewell.



LIFTS:
Four Automatic lifts of reputed make and 6 to 8 passenger capacity lifts.

SOVEREIGN SANTHINIVASA

2 AND 3 BHK LUXURY APARTMENTS

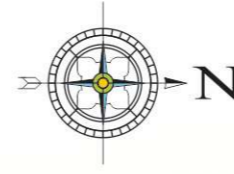


- Swimming pool with toddler's pool
- Children's play area
- Exclusive gymnasium
- Jogging track
- Multipurpose hall
- Generator power back-up
- Sewage Treatment Plant

Loans Available From :

State Bank of India LIC House Finance Axis Bank

AMENITIES:



COVERED CAR PARKING



SCHOOLS
 Gear Innovative School
 Oakridge International school
 Indus International School
 Global International School
 Delhi Public school



HOTELS
 Aloft Bengaluru Whitefield
 Four Points
 The Zuri Whitefield,
 Hotel FORMULE1
 Hotel Nandhini



SHOPPING MALLS
 Total Shopping Mall
 Spencer's Hyper Store
 The Forum Value Mall
 Reliance Fresh
 Fresca Super Market



HOSPITALS
 Sri Sathya Sai General Hospital
 Vydehi Hospital
 Narayana Multi Speciality Hospital
 New Life Hospital
 Columbia Asia Hospital - Whitefield



IT PARKS / CORPORATE OFFICES
 ITPL
 GR Tech Park Bus Stop
 Sigma tech park
 Asklepian Technologies Pvt. Ltd.
 HCL Technologies

LOCATION MAP



SOVEREIGN BUILDERS

SITE ADDRESS:

SOVEREIGN SANTHINIVASA

Sy.# 43/2 & 44, Somapura Main Road,
Near by Kristal Apt., Bangalore - 562 125

Contact no.

+91 90666 80744 / 96864 76662

E-mail:sales.sovereignbuilders@gmail.com



2 AND 3 BHK LUXURY APARTMENTS

www.sovereignbuilders.co.in

Note: This brochure is only a conceptual presentation of the project and not a legal offering.
The promoters reserve the right to make changes in the elevation, plans and specifications as deemed fit
All applicable Taxes Extra, Conditions apply*



Architect
VIJAY ASSOCIATES
Architects, Engineers & Contractors
Mo: +91 98801 36126
Email: k.prem.naidu@gmail.com



Legal Advisor
SNN ASSOCIATES
P. Nagamuni Reddy B.Com., LL.B.,
Mobile no.: 99451 59840
E-mail: nagamuni_advocate@yahoo.com

Ashreya Mobile: 98443 58935

SOVEREIGN SANTHINIVASA

2 AND 3 BHK LUXURY APARTMENTS

EXPERIENCE GREAT OUTDOORS
AND PLEASANT INDOORS!!



SOVEREIGN BUILDERS

