

The logo for Brookefield WILLOWS is located in the top right corner. It features a stylized white flame icon above the text "Brookefield" and "WILLOWS" in a white serif font, all set against a red square background.

Brookefield
WILLOWS

Experience the complete living...



2 & 3 BHK Premium Residences @ Pisoli

Life comes closer...



Nestled in the serene surrounds away from the commotion and noise of the city 'Brookefield Willows' makes way to pollution free zone. It's close proximity to schools and work places makes it the most preferred choice while looking for a home with excellent connectivity. It is in close proximity to the prestigious educations institutes, hospitals, health clinics and recreational destinations around NIBM road and Camp. 'Brookefield Willows' promises everyday to be a rendezvous. Dine and shop in the chic neighboring city centers, or head to the exclusive restaurants for a fabulous night that you won't forget. And when the day is through, come home to find leisure and comfort that is sure to stir your soul.

Easy to reach destinations from 'Brookefield Willows'

- Bishops High School
- Vibgyor High School
- Delhi Public School
- Corinthian Club
- Magarpatta City
- SP Infocity



The fine living experience...



'Brookefield Willows' is a complete living experience, a blend of lifestyle villas as well as 2 & 3 BHK Apartments. Abounding in opulent comforts, these homes are exquisitely crafted to experience exclusivity, comfort and most importantly more space. 'Brookefield Willows' is equipped with club house, swimming pool, children's & toddlers play area, sit outs, sense of security and much more.

Spacious and well lit lobbies in the building provide a grand ambience. Most importantly there is ample two level parking for easy movement of vehicles around the project. Quality fittings throughout the project create a living environment that elevates leisure living to its highest level with thoughtful and innovative designs.

With the already done landscaping and the ready villas the project is already blooming and welcoming its new home owners on board.





Cuddling up to the greens...



The moment you drive in to “Brookefield Willows” you are welcomed by spectacular landscape that is already in place. You are greeted by the essence of contemporary urban living, with abundant open areas.

Apart from the breathtaking surroundings “Brookefield Willows” has a layout that provides easy access to all the top class facilities be it the club house, swimming pool or the gym. None of the flats face another building and ensure you get unrestricted views of the city and the hills.

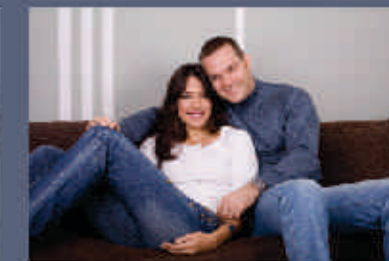
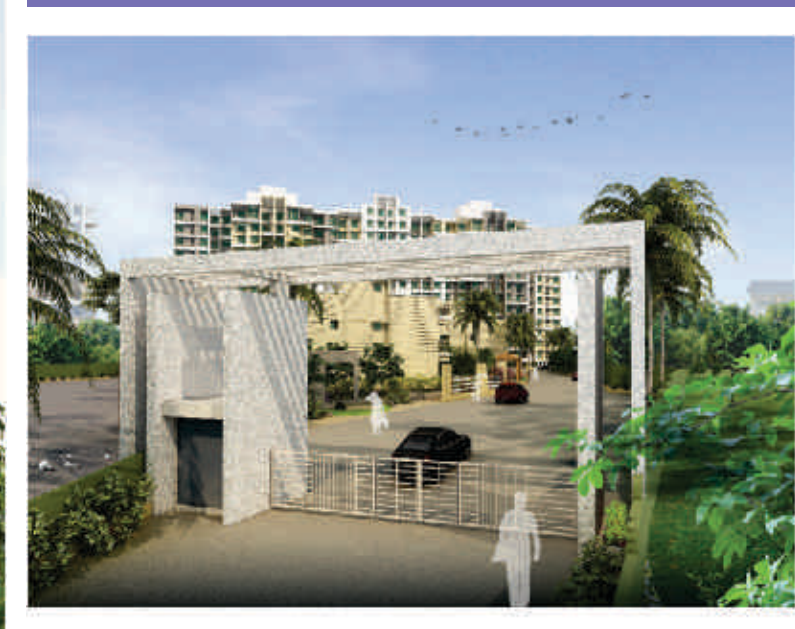
‘GO GREEN’ is the way of life and “Brookefield Willows” is well equipped with energy saving lighting, solar lights for driveways and some common areas, much required rain water harvesting, recycled water for the landscaped areas and vermiculture plant as well as AAC blocks for construction.





Brookefield
WILLOWS

“Brookefield Willows” takes you to the pinnacle of leisure living with luxurious interiors and spacious hallways that rise above the ordinary. These exquisite homes come with lavish amenities and features to make your life the best it can be. Innovation coupled with practical design creates an unmatched level of comfort and convenience. A unique blend of practicality and elegance, resulting in the most beautifully homes you'll ever find. From lavish living areas to well appointed kitchens, “Brookefield Willows” creates the kind of life you deserve.





Brookefield
WILLOWS

Jump start your way to a fantastic design experience. Cool yourself in the pool, or just sit back and unwind on the deck, basking in the sun, savoring the nature at its best. Watch the kids indulge in water games on a clear sunny day, laughing and enjoying themselves. Spoil yourself with the weekend parties, a stroll in the garden, catching up with your friends and loved ones. The homes at "Brookefield Willows" let you relax and enjoy life at a slower pace.






Brookefield
WILLOWS

Have sometime for leisure and solitude. Indulge in the scent of flowers, hear the birds chirp, watch the pretty little butterflies fluttering from one blossom to another, watch the morning sun rise over the distant hill, feel the balmy breeze brush against your skin, just enough to set the wind chimes into a soft soothing music and let it stroke your imagination. Walk in the grass barefoot without a care in the world, sit around and relax amidst the lush green spaces lined with manicured shrubs, enjoying the tête-à-tête with friends.





Amenities:

- Well decorated club house
 - Designer landscaped garden
 - Well equipped gymnasium
 - Amphitheater
 - Children's play area
 - Toddler's play area
 - Party lawns
 - Table tennis
 - Swimming pool
 - Kids pool
 - Concrete / paved Internal pathways
 - Generator backup for common area & lift.
 - Decorative entrance lobby
 - Two lifts for each building
 - Intercom Facility
 - Ample allotted parking
 - Fire fighting system for each building
 - Common car-wash area
 - Garbage chute
 - Provision for broadband connectivity
 - Grand entrance gate
 - Security guard cabin
-
- **Brookfield Willows *Specials***
 - Common solar water heating system
 - Exhaust fan in toilets & kitchen
 - Tube light in all rooms
 - Video door phone
 - MS Power coated safety door for main door
 - Multi Dwelling Unit (MDU)/ Common Antenna for DTH connection
 - Solar powered lights in driveways
 - Recycled water for landscaped area



Specifications

R.C.C.

- Earthquake resistant structure

Brickwork

- External 6" & Internal 4" thick AAC blocks

Plaster

- External sand-faced & Internal neeru / gypsum finished

Door

- Decorative veneer main door
- Moulded panel bedroom door with cylindrical lock
- 2 track powder coated aluminum doors for terraces.
- Moulded waterproof decorative doors for toilets

Windows

- 3 track powder coated aluminum windows with mosquito mesh, safety grills & granite sill

Kitchen

- Granite kitchen platform with stainless steel sink
- Arrangement for washing machine in dry balcony

Toilets

- Concealed CPVC plumbing
- Designer glazed tile dado
- C. P. Jaquar / equivalent toilet fittings
- Hot & cold single lever mixer unit
- Wall hung commode with concealed flush valve

Flooring

- 24" x 24" vitrified tiles
- 12" x 12" antiskid tiles in toilets & terraces

Electrification

- Concealed electrification
- Anchor Roma or equivalent switches
- A.C. point for all bedrooms
- Adequate electrical points in every room
- Provision for inverter

Painting

- Internal oil bound distemper
- External acrylic paint

Brookefield Willow *Specials*

- Common solar water heating system
- Provision for water purifier
- Exhaust fan in toilets & kitchen
- Tube light in all rooms
- Video door phone
- MS Power coated safety door for main door

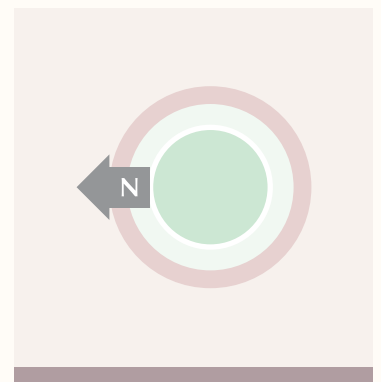


A1 & A2 BUILDING

AREA STATEMENT IN SQ. FT.

Typical 1st, 3rd, 5th, 7th, 9th & 11th floor plan

FLAT NO.	TYPE	B/UP AREA
101,301,501,701,901,1101	2-BHK	956
102,302,502,702,902,1102	2-BHK	962
103,303,503,703,903,1103	3-BHK	1264
104,304,504,704,904,1104	3-BHK	1256
105,305,505,705,905,1105	2-BHK	883
106,306,506,706,906,1106	2-BHK	884
107,307,507,707,907,1107	2-BHK	883
108,308,508,708,908,1108	2-BHK	890
109,309,509,709,909,1109	2-BHK	975
110,310,510,710,910,1110	2-BHK	973



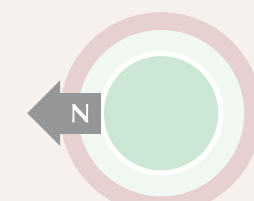


A1 & A2 BUILDING

AREA STATEMENT IN SQ. FT.
Typical 2nd, 4th, 6th, 8th, 10th, & 12th floor plan

FLAT NO.	TYPE	B/UP AREA
201,401,601,801,1001,1201	2-BHK	956
202,402,602,802,1002,1202	2-BHK	966
203,403,603,803,1003,1203	3-BHK	1262
204,404,604,804,1004,1204	3-BHK	1252
205,405,605,805,1005,1205	2-BHK	886
206,406,606,806,1006,1206	2-BHK	886
207,407,607,807,1007,1207	2-BHK	886
208,408,608,808,1008,1208	2-BHK	886
209,409,609,809,1009,1209	2-BHK	979
210,410,610,810,1010,1210	2-BHK	974

Flat No. 808 & 809 are refuge areas





Site address. S. No 6, Pisoli, Adjacent to Dharmavat Ptrol Pump, Kondhwa Undri Road, Pune – 411028

For Booking please call: 98224 24999 / 83083 88000

A project by: **Nirman Trimurti Developers**



301, Citi Center, Opp. Ayurved Rasashala, Karve Road, Pune - 411004. Tel: 020 - 2545 5880 / 25455881, Fax: 020 - 2545 5880

www.nirmandevelopers.in

Note : The images and material contained in the Brochure are conceptual illustrations. Only the Actual Agreement (to be entered into between the flat purchaser and the developers), shall be binding on the Parties and the actual layouts, and specifications of the individual flat and any amenities to be provided, stated therein shall be final and conclusive of the agreed terms, offered to the Purchaser by the Developer. The Developer reserves all rights to make alterations, modifications, and changes in the sanctioned plan, lay out specification, flats/units, elevations, designs, and amenities that will be made available in the project. The flats are sold on the basis of carpet area and the salable area is for illustration purpose only.

Member
CREDAI
PUNE METRO