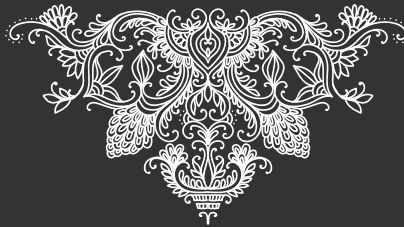


ananda





LUXURY.  
HERITAGE.  
COMMUNITY.





## Basavanagudi

Lush greenery, old colonial bungalows and a life steeped in south Indian heritage; these are the hallmarks of Basavanagudi. As a significant intellectual and social hub, Basavanagudi has been home to stalwarts of the socio-political-cultural landscape of Karnataka. From the quiet serenity of the Ramakrishna Ashram to the unmatched pulse of Gandhi Bazaar, Basavanagudi is a truly unique place to call home.





ananda



Bull Temple Road



Shri Ramakrishna Ashram



Bull Temple



K.R. Market Metro Station



National College Metro Station



Vimalnath Jain Temple



Lalbagh Metro Station

Lalbagh Lake

Lalbagh Fort Road

Sajjan Rao Circle

Avenue Road

M.G. Road

M.G. Road



Cubbon Park



Sri Kanteerava Stadium



Lalbagh



Mysore Road

Vanivilas Road

Lalbagh Lake





## Ananda

132 Luxurious 4 BHK Apartments for entrepreneurial families. Our first residential project Ananda, is nestled in the heart of Basavanagudi. Ananda Homes are centered around Indian value systems, celebrating our vast heritage. This design philosophy is complemented with contemporary technology to facilitate the intricacies of modern living, and ever evolving family lifestyle.





## Site Plan

4,62,894 sq. feet as per sanction plan.

97,000 sq. feet landscape.

24,000 sq. feet clubhouse.

392 car parks.

Tower 1: 2,27,179 sq feet as per sanction plan

Tower 2: 2,28,322 sq feet as per sanction plan



**Type A**

2644.5 square feet area

**Type B**

2602.4 square feet area



**Type I**

2777.3



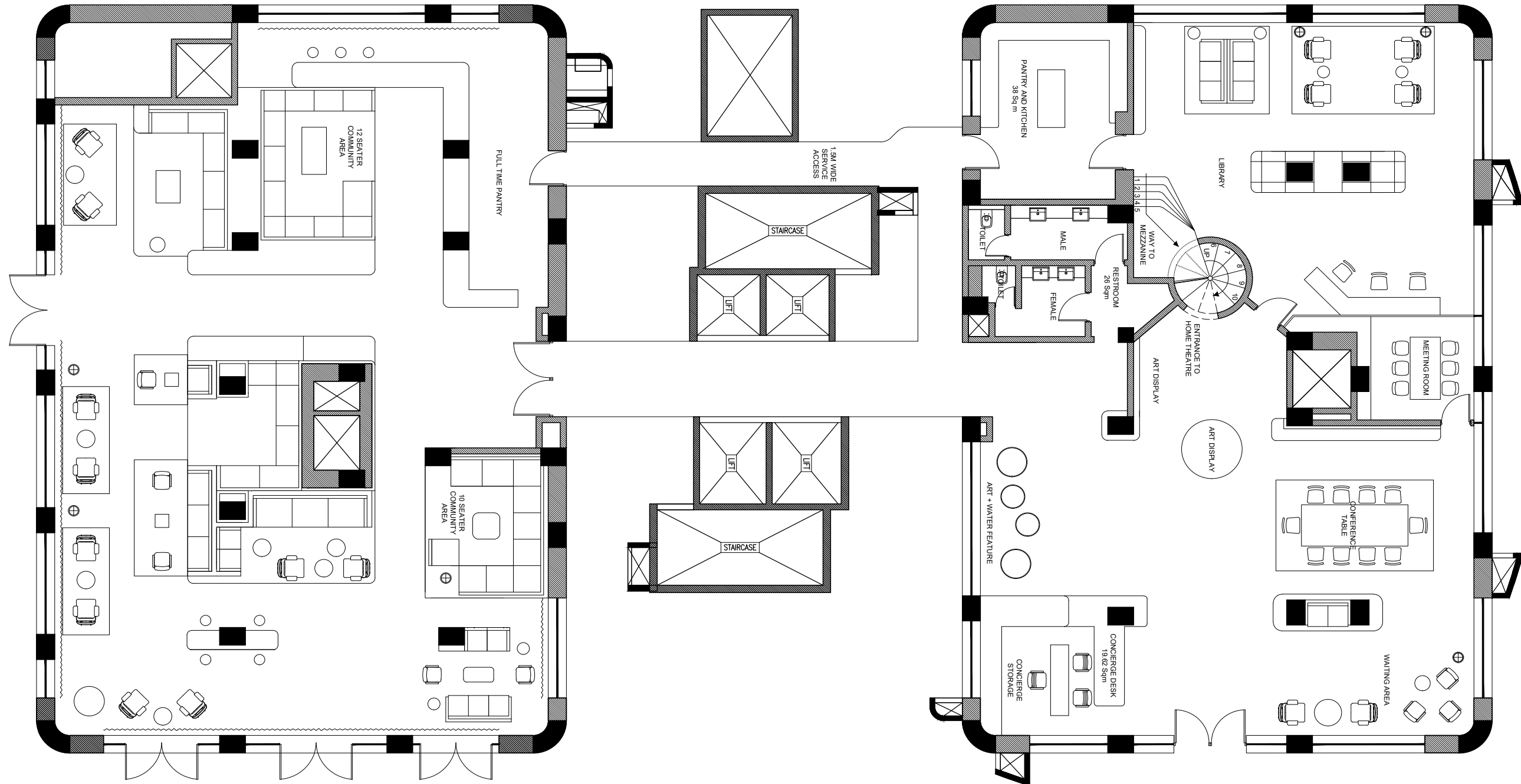
**Type C**

2747.5 square feet area



# Tower 1

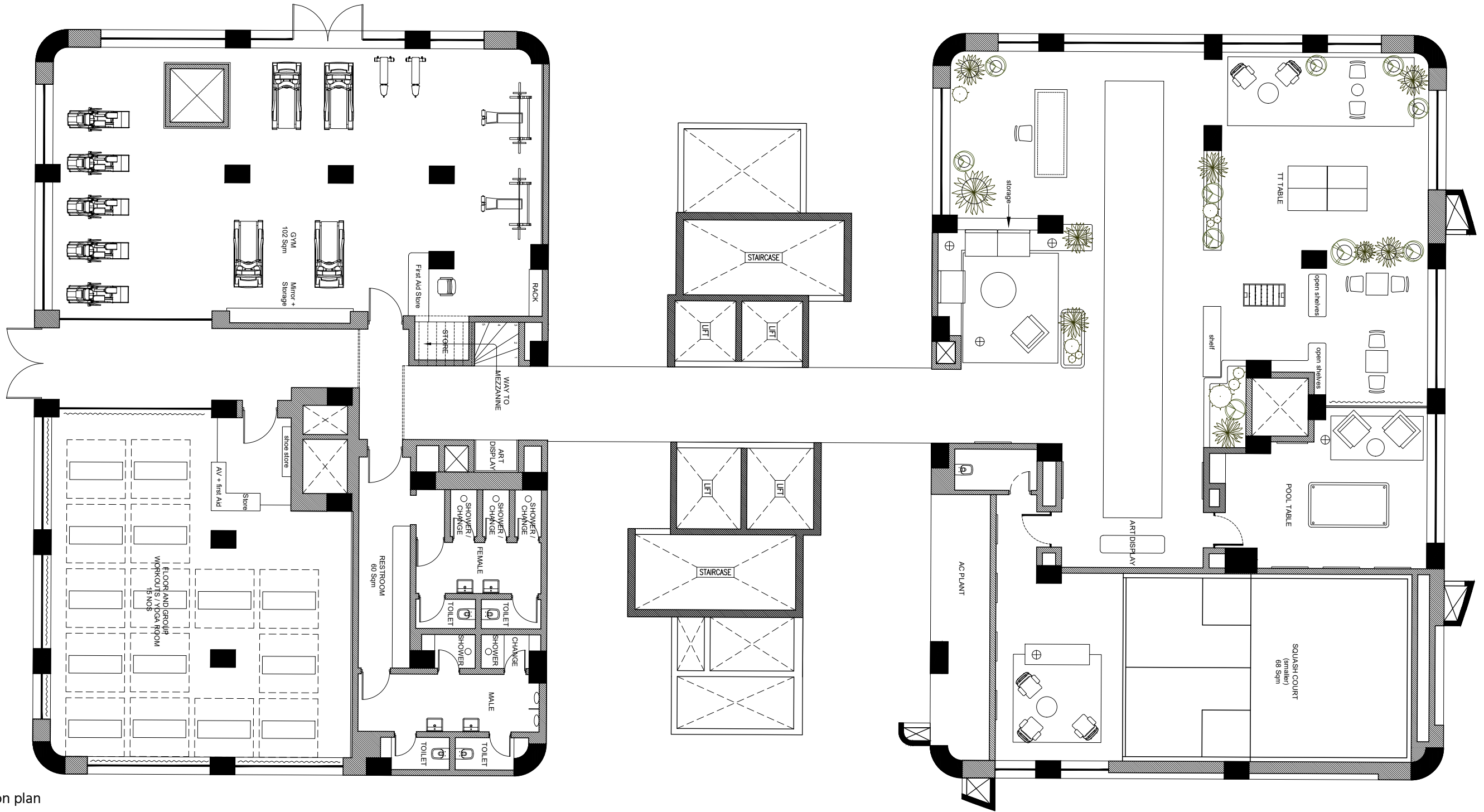
2,27,179 sq feet as per sanction plan





# Tower 2

2,28,322 sq feet as per sanction plan







MODEL APARTMENT





Living Room





Living Room





Master Bedroom





Other Bedrooms





**Kitchen and Utility**





**Kitchen and Utility**





Study Room





Bathroom





## COMMONHOUSE

KARMA : A business bay and corporate space

BODHI : Library

SATTHVAM : Interaction Space

VIMAANA : A rooftop swimming pool

TAPOVANA : Lush Landscape

KULA : Community manager office

KRIDA : Squash court

VYAMYAM : Gymnasium, spa and sauna

ASANA : Yoga and group exercise room

LEELA : Children's indoor play area.



The image shows a sophisticated lounge area. The most prominent feature is a large, circular ceiling fixture with a dark, textured, perforated surface and a metallic rim. Below it, a large white sectional sofa with dark wood framing is arranged around a central coffee table. The coffee table is a low, dark wood piece with a red cushion. A patterned rug is on the floor. In the foreground, there's a large potted plant. To the right, another white sofa is visible near a window with sheer curtains. The overall aesthetic is modern and elegant.

## Satthvam

The peacock lounge in the clubhouse. Meet and greet your guests at this 5000 sq.ft. of luxurious space. The lounge offers various types of seating that allows for both formal and informal meets.





## Bodhi

The library in the clubhouse. With over 2000 books that have been carefully curated, this space allows you to bring out reader in you. Relax and read in comfort the library while you sip on a warm cup of coffee, or borrow a book and read at your own pace.



## Vyayam

Exercising regularly leads you to a healthy lifestyle. The gym and yoga studio offer the best equipment and instructors to help you achieve the your work out goals.





A lush landscape with a central water-body, surrounded by trees, a modern building, and a paved walkway. The scene is a vibrant green space with a central pond, a paved walkway, and a modern building in the background. The landscape is filled with various trees and plants, creating a serene and natural environment. The water body is a central feature, reflecting the surrounding greenery and sky. The paved walkway is made of light-colored tiles with a subtle pattern. The modern building has a white facade and large windows, suggesting a contemporary architectural style. The overall atmosphere is peaceful and inviting, showcasing a well-designed urban landscape.

## Tapovana

A lush landscape with a central water-body becomes an extension of the adjoining Ramakrishna estate, the landscape has several unique spaces to experience. A treehouse to a children's play area to walking tracks, the landscape offers several opportunities to experience nature right in the heart of the city.



## Vimaana

The infinity pool on the eighteenth floor offers unmatched views of Bangalore. With an accompanying open landscaped terrace the pool is designed and tucked away providing a layer of privacy to the residents using it.







## About Us

At Machani Group, we strive to find the juncture where engineering, design and technology meet. Our team comprises of a vast network of capable designers and engineers who collaborate to create products and experiences. Wedding, services, products and technology are few of the experiences we tailor make for discerning audiences. With a vast portfolio of businesses ranging from manufacturing to philanthropy, Machani Group is a reputed business conglomerate with interest in varied businesses such as hospitality, augmented reality and design, or precision engineering and education. The illustrious range of businesses under Machani Group Umbrella are Stumpp, Schuele & Somappa Springs, Machani Infra Development, The Tamarind Tree, Indivillage, Core Experience, Aerovite, Machani Shantamma Ramana School and Charity and Mayaxis.



Visit us at : [www.machanigroup.com](http://www.machanigroup.com)

