



ATRIUM
SKYWARD
MORE SURPRISES. MORE LIFE.

LIFE STYLE

MORE TO
THAT ADDS



A PROJECT BY ATRIUM HOMES



ATRIUM
SKYWARD
MORE SURPRISES. MORE LIFE.

The logo features a stylized chevron symbol composed of three overlapping segments in teal, yellow, and green. The text is in a clean, sans-serif font, with 'ATRIUM' and 'SKYWARD' in bold uppercase letters, and the tagline 'MORE SURPRISES. MORE LIFE.' in a smaller, regular weight font below.

**MORE SURPRISES,
MORE EXPERIENCES
AND MORE LIFE;
MORE THAN YOU
HAVE EVER
EXPECTED.**





**WARM WEEKENDS OR
SUNNY DAYS.**



**LAZY EVENING WALK OR
ENERGETIC MORNING JOG.**



**MAJESTIC DESTINATIONS OR
ROMANTIC AVENUES.**



**LONG WEEKENDS OR
SMALL GATHERINGS.**



**HEALTH'S HEAVEN OR
NATURE'S PARADISE.**

**LIFE HAS MORE TO OFFER,
MORE TO CHERISH;
INVITING YOU TO DISCOVER
MORE OF EVERYTHING.**

WELCOME TO


**ATRIUM
SKYWARD**
MORE SURPRISES. MORE LIFE.



**A LIVING THAT
ADDS SURPRISES
TO EVERYDAY LIFE...
ADDS LIFE.**

PRESENTING ATRIUM SKYWARD -
1, 1.5 & 2 BHK APARTMENTS
WITH 13,000 SQUARE FEET OF
LANDSCAPED AREA AT UNDRI,
NEAR NIBM, PUNE.

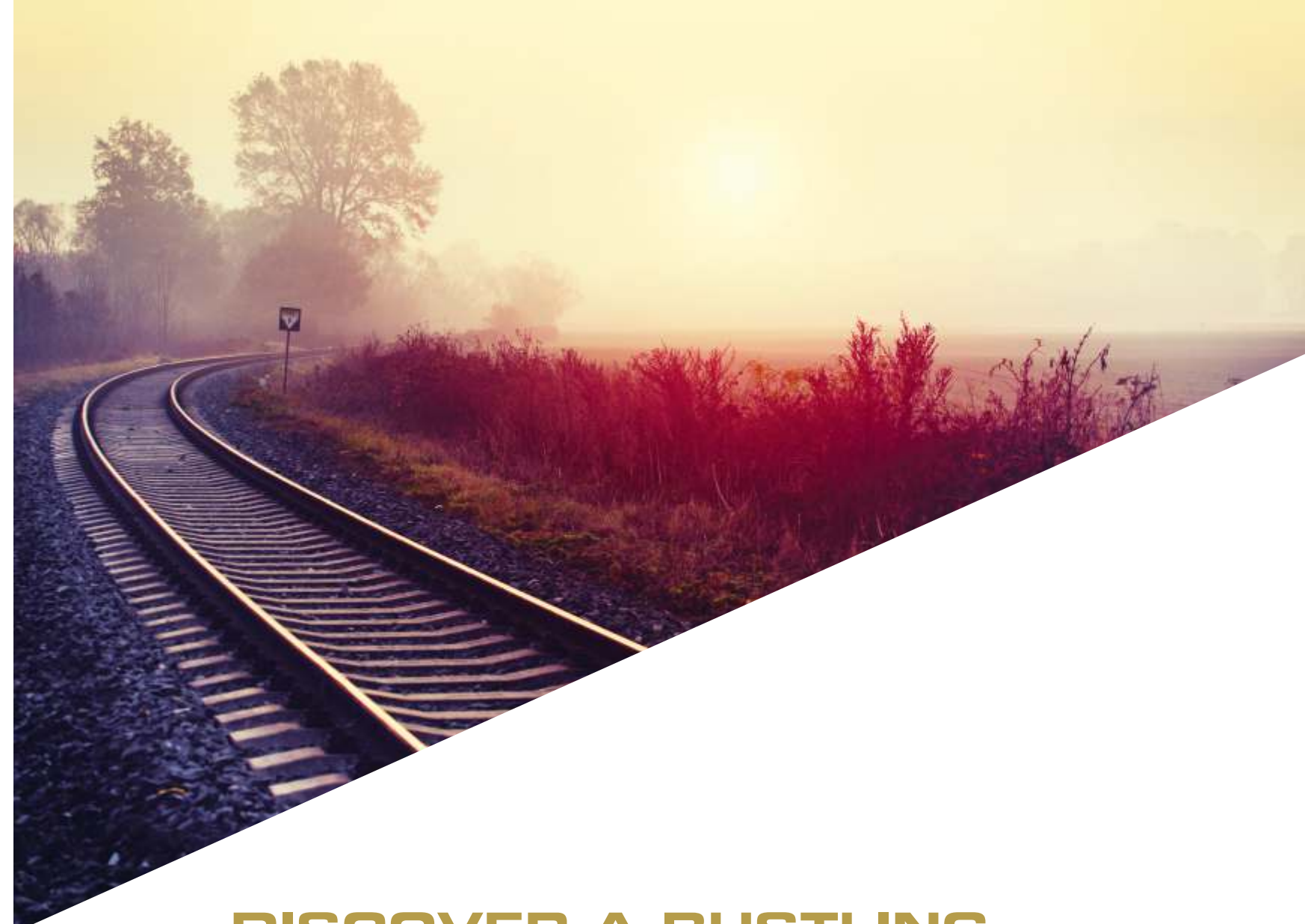


EXCLUSIVE TO YOUR NEEDS. ALL THE INDULGENCES YOU WANT.

A cosmopolitan locality... Advantageous life... Family time... Self-indulgences... Recreations... Health... Social get-togethers... Living at **Atrium 'Skyward'** gives you more of everything at unbelievably low costs.

Project Highlights:

- G + 11 storied, 3 residential towers A, B & C wings
- 1, 1.5 & 2 BHK flats with private balconies
- Private terraces attached to living & bed areas
- Community living comprising 220 homes
- Lavish 13,000 sq. ft. of landscaped garden
- 360 degree views of life & nature
- Ample parking space



DISCOVER A BUSTLING HUB OF ACTIVITY, OF NATURE WONDERS ALONG WITH MESMERISING VIEW OF LIFE.

Office... Parent's meeting... Birthday's... Anniversaries... Family get-togethers... Weekend parties... "Atrium Skyward" gives you a bundle of options to reach destination within few minutes. Thanks to the closeness to world class transportation facilities. And adding to the list, it also enjoys close proximity to IT hubs and investment destinations that makes your living hassle-free.

Location Advantages:

Distances

- 1) Near IT Hub Magarpatta - 8kms
- 2) MG Road - 9kms
- 3) Pune Airport - 18kms
- 4) Pune Station - 13kms
- 5) Shivajinagar/ Deccan - 12kms
- 6) Swargate Bus Stop - 9kms
- 7) In the close vicinity of the proposed Ring Road from Katraj to Solapur Highway

Nearby Hospitals

- 1) Noble Hospital - 4kms
- 2) Desai Eye Hospital - 2.5kms
- 3) Poona Hospital - 2.5kms

Nearby Entertainment Hub

- 1) Amanora Mall - 7kms
- 2) Seasons Mall - 7kms
- 3) Corinthians Club & Boutique Hotel - 1.5kms

Near to Education Hub

- | | |
|------------------------------|---------------------------------|
| 1) Bishop's School - 200mtrs | 3) Euro School - 300mtrs |
| 2) Vibgyor School - 1km | 4) Delhi Public School - 1.5kms |

LOCATION MAP



**ENGAGE IN YOUR
FAVOURITE ACTIVITIES
OR SIMPLY UNWIND
AFTER A HARD DAY'S
WORK AT THE LATEST
RECREATION ZONE.**





**THEY SAY
SOCIALISING IS AN ART,
BE THE MASTER OF IT.**

Modern Clubhouse with
Health and Wellness Facilities

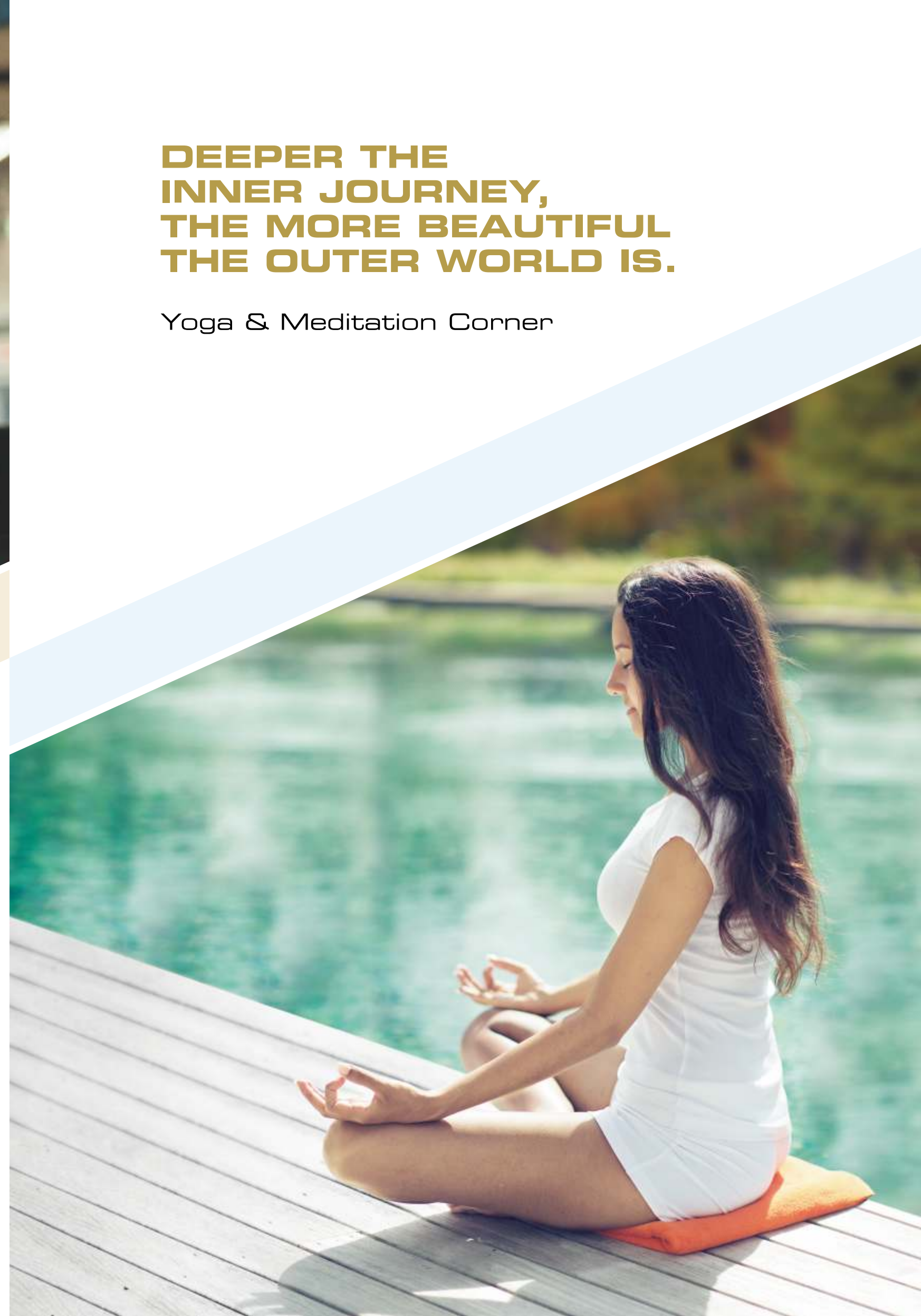


**BECAUSE IN A WORLD OF
FIERY COMPETITION,
STAYING FIT
IS THE ONLY OPTION.**

Ultra-modern Gymnasium

**DEEPER THE
INNER JOURNEY,
THE MORE BEAUTIFUL
THE OUTER WORLD IS.**

Yoga & Meditation Corner





LEISURE WALK AT YOUR OWN PACE SOUNDS PERFECT IDEA FOR AN ENERGETIC MORNING.

Jogging Track

THE MORE YOU WALK THE MORE CLOSE YOU GET TO THE LIFE.

Pathway with Herbal Plantation





**FREE YOUR MIND.
TAKE YOUR MARK.
AND TAKE A PLUNGE
INTO THE WATER WORLD.**

Swimming Pool & Baby Pool
with Pool Deck

**LET CHILDREN
BE CHILDREN,
WHILE YOU DISCOVER
A CHILD IN YOU.**

Designer Landscaped Garden
with Children's Play Area



**LET THEM
FIND FRIENDS AND
AN ANTIDOTE
TO BOREDOM
AT THEIR OWN PACE.**

Senior Citizen's
Seating Zone



**PARTY HARD.
MAKE FRIENDS.
LAUGH ENDLESSLY.
AFTER ALL
IT'S PARTY TIME.**

Open Amphitheatre with
Party Lawn





**STOP DREAMING
ABOUT WINNING,
START TRAINING.**

Single Side Basketball Court
with Rubber Flooring

**WINNING COMES
NATURALLY TO THOSE,
WHO PLAY
WITH HEART.**

Anti-skid Multipurpose Play Court
for Lawn Tennis, Volleyball etc.



**LIVE IN HOMES WITH
A WIDE RANGE OF
COMFORTS &
CONVENIENCES,
COME HOME TO
PERFECT LIVING.**



**DISCOVER THE ART OF
PERFECT LIVING WHILE
YOU REDISCOVER
THE JOY OF LIVING.**

Luxurious Living Rooms
with Designer Tiles



**BEGIN YOUR
COFFEE TIME AT
YOUR OWN
PRIVATE TERRACE.**

Well-ventilated Living Spaces
with Private Terraces



Artist's Impression

**BASK IN THE
ABUNDANCE OF SPACE,
WHILE YOU ENJOY
GREAT VIEWS OF NATURE.**

Bedrooms with Designer Tile Flooring

**IT'S TIME FOR YOU
TO REDISCOVER RIGHT
INGREDIENT FOR THE
PERFECT RELATIONSHIP.**

Modern Kitchen with Granite Platform



**LET THE COMFORT, SOOTHE
YOUR SOUL WHILE
THE WATER WASHES OFF
ALL DISTRESS.**

Designer Bathroom with
Branded Sanitary Ware and Flooring



**BEGIN YOUR JOURNEY
TO A WHOLE NEW LEVEL
OF LUXURIOUS LIVING.**

Automatic Lifts of Reputed Make
with Generator Backup

**WHERE YOUR ARRIVAL
IS NO LESS THAN
A HOMECOMING.**

Designer Entrance Lobby



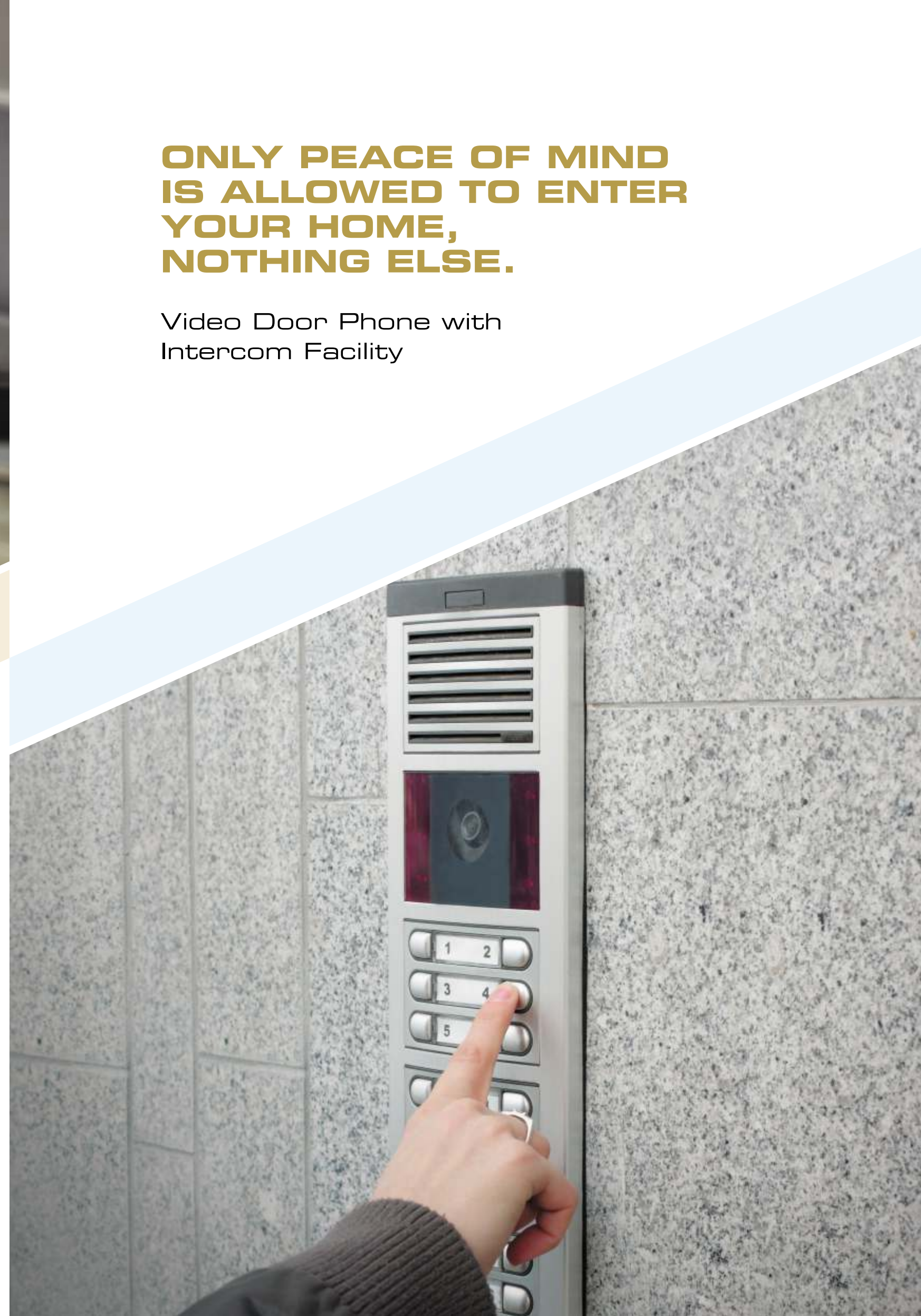


**ONLY PEACE OF MIND
IS ALLOWED TO ENTER
YOUR HOME,
NOTHING ELSE.**

Video Door Phone with
Intercom Facility

**ENJOY THE GOOD
NIGHT'S SLEEP, WHILE
WORLD-CLASS SECURITY
SERVICES SWIPES
ALL YOUR WORRIES.**

Zero-compromise Security -
CCTV Surveillance System



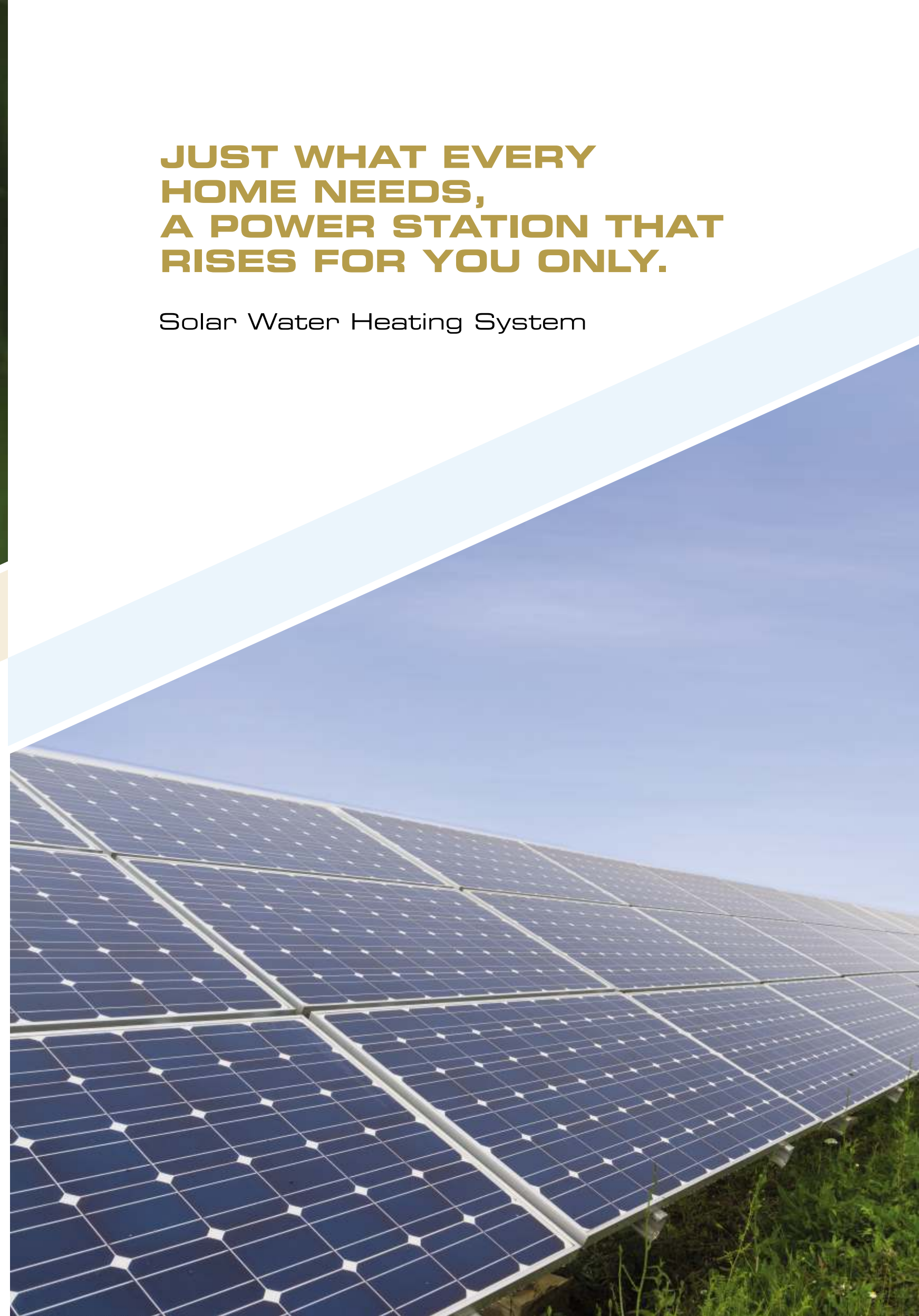


**JUST WHAT EVERY
HOME NEEDS,
A POWER STATION THAT
RISES FOR YOU ONLY.**

Solar Water Heating System

**MAKE TOMORROW
POSSIBLE, TODAY
LET'S PRESERVE
RAINWATER.**

Rain Water Harvesting with
Water Recycling System



A HOME THAT IS MASTERLY PLANNED & SMARTLY DESIGNED.

3D Master Plan

LEGENDS

1. MAIN ENTRANCE WITH SECURITY CABIN
2. BUS STOP
3. SENIOR CITIZEN SITOUT
4. PERGOLA / TRELLIS STRUCTURE
5. PATHWAY
6. LAWN AREA
7. SWIMMING POOL
8. BABY POOL
9. POOL SIDE DECK
10. CLUBHOUSE
11. INFINITY EDGE POOL
12. WOODEN DECK WITH PERGOLA SIT-OUT
13. CHILDREN'S PLAY AREA (SAND AREA)
14. FEATURE WALL
15. STEPPING STONES WITH LAWN JOINTS
16. VIEWERS GALLERY
17. STAGE
18. AMPHITHEATER
19. SINGLE PLAYER BASKETBALL COURT



**A HOME OF LUXURY
THAT WILL ASTONISHINGLY
LEAVE YOU AWE-STUCK.**

Lavishly Designed Living Spaces



ENTRANCE

1 BHK

3D ISOMETRIC PLAN



Saleable Area - 690 Sq. Ft.

- 1. Entrance Lobby - 4'1" X 3'4"
- 2. Living Room - 10'1" X 13'
- 3. Kitchen - 8'2" X 8'2"
- 4. Dry Balcony - 8'2" X 5'1"
- 5. Toilet - 3' X 4'
- 6. Bathroom - 6'7" X 4'1"
- 7. Bedroom - 10'1" X 10'2"
- 8. Terrace - 10'2" X 9'1"

1.5 BHK

3D ISOMETRIC PLAN



Saleable Area - 875 Sq. Ft.

1. Entrance Lobby - 4'1" X 3'4"
2. Living room - 10' X 13'
3. Kitchen - 8'2" X 8'2"
4. Dry Balcony - 8'2" X 3'1"
5. Toilet - 3' X 4'
6. Bathroom - 6'6" X 4'
7. Bedroom - 10' X 10'
8. Terrace - 19' X 8'6"
9. Kids Room - 8'6" X 10'6"

2 BHK

3D ISOMETRIC PLAN



ENTRANCE

Saleable Area - 1000 Sq. Ft.

1. Entrance Lobby - 4'5" X 3'7"
2. Living Room - 11'2" X 15'5"
3. Kitchen - 9'1" X 8'2"
4. Dry Balcony - 9'1" X 4'9"
5. Bedroom - 11'1" X 10'
6. Toilet - 7'8" X 4'1"
7. Bedroom - 11'2" X 10'2"
8. Toilet - 7'8" X 4'1"
9. Bathroom - 6'6" X 4'
10. Terrace - 11'7" X 7'7"



AT A GLANCE

Project Highlights:

- G + 11 Storied, 3 Residential Towers A, B & C Wings
- 1, 1.5 & 2 BHK Flats with Private Balconies
- Private Terraces Attached to Living & Bed Areas
- Community Living Comprising 220 Homes
- Lavish 13,000 sq. ft. of Landscaped Garden
- 360 Degree Views of Life & Nature
- Ample Parking Space

Recreation & Wellness Options:

- Modern Clubhouse
- Ultra-modern Gymnasium
- Yoga & Meditation Corner
- Pathway with Herbal Plantation
- Jogging Track
- Children's Play Area
- Swimming Pool & Baby Pool with Pool Deck
- Senior Citizen's Seating Zone
- Open Amphitheatre with Party Lawn
- Anti-skid Multipurpose Play Court for Lawn Tennis, Volleyball etc.
- Single Side Basketball Court with Rubber Flooring

Perfect Living:

- Luxurious Living Rooms with Designer Tiles
- Well-ventilated Living Spaces with Private Terraces
- Bedrooms with Designer Tile Flooring
- Modern Kitchen with Granite Platform
- Designer Bathroom with Branded Sanitary Ware and Flooring
- Designer Entrance Lobby
- Automatic Lifts of Reputed Make with Generator Backup
- Zero-compromise Security - CCTV Surveillance System
- Video Door Phone with Intercom Facility
- Rain Water Harvesting with Water Recycling System
- Solar Water Heating System

Flooring:

- 800x800 Designer Tiles
- 300x300 Antiskid Tiles in Toilets/attached Terraces
- 300x300 Antiskid Tiles in Utility Area with Dado Up to 3'.0' Height
- 300x450 Designer Dado Tiles Up to Lintel Levels in Kitchen & Toilets
- Granite Kitchen Platform with SS Sink
- Window Sill in Granite
- Granite Doorframe for Toilets

Painting:

- Internal Paint - 2 Coat of Acrylic Premium Emulsion Paint for Walls (Water Based)
- Oil-bound Distemper to Ceiling
- External Paint - Apex/Semi Acrylic Paint

Doors & Windows:

- 3 Track Aluminium Powder Coated Windows with Mosquito Mesh
- 3 Track Aluminium Powder Coated Sliding Doors with Mosquito Mesh to Attached Terrace
- Main Door - Designer Main Door with Exclusive Fittings
- Bedroom Doors - Designer Solid Core Flush Doors for Bedrooms
- Toilet - Both Side Laminated Flush Doors

Fabrication:

- S.S. Glass Railing for Attached Terrace
- Oil Painted M.S. Safety Grills
- Designer M.S. Railing for Staircase

Plumbing:

- Chrome Plated Bath/ Toilet Fittings of Jaquar/Cera/Hindware or Equivalent Make
- Concealed UPVC/CPVC Plumbing
- Premium Sanitary Ware Fittings

Electrical:

- Branded Modular Switches
- Provision for A.C. Point in Master Bedroom
- Provision for T.V. & Telephone Point in Living Room & Master Bedroom
- Adequate Electrical Points in All Rooms
- Common DTH Service Provision

Fire Fighting System:

- Fire Door - Fire Resistant 2 Hour Fire Rating Doors for Staircase
- Hydrant, Hose Reel, Extinguisher and Manual Alarm Point on Each Floor
- DG Backup for Fire Fighting System

Masonry & Plastering:

- Internal & External Walls in Eco-friendly AAC Blocks
- Neeru/Gypsum Finished Internal Walls & Ceiling
- Double Coat Sand Faced Plaster for External Walls

Waterproofing:

- Brickbat Coba Waterproofing



A NEW FACE IN THE REAL ESTATE INDUSTRY.

Our life is a series of moments intertwined to capture our inspiration and partner with our passion. Life is defined by opportunities, which often comes as possibilities in our life. This is why each and every day is a big event to get excited about. And every single event is an opportunity to achieve more of life.

Believing in the above philosophy Atrium Group's journey began in 2014 with a vision of building a perfect world in which every single person has more to explore and more to cherish. Built on the foundation of trust, integrity, customer-centric approach to perfection. The group is progressing towards a great future. Under the able leadership of industry professionals, architects, planners, & real estate consultants Atrium Group is all set to create a history in real estate with the launch of it's first ever project "Atrium Skyward" at Undri, Near NIBM, Pune.



ATRIUM H O M E S

MORE TO LIFE

CORPORATE ADD.: Anandi Gopal, Office No. 6, 4th Floor, CTS No. 1195/2 F.C. Road, Shivajinagar, Pune - 411 005.
Tel.: +91 98500 85557 / 020-6500 9600 | Email: sales@atriumhomes.in | www.atriumhomes.in

SITE ADD.: 5, 6 & 7, Opposite Bishop's School, Near NIBM, Undri, Pune - 411 060 | Tel.: 91300 82452 / 91300 82454

Architect
Cubix Architect

Legal Advisor
Benchmark Services LLP & Prashant M Patil

R.C.C Consultant
Sunil Mutalik & Associate

Landscape Designer
Mahesh Chinchalkar

Vastu Consultant
Vasturaviraj

Disclaimer: The information contained in this brochure intended, solely to provide general information for discussion purpose to the prospective buyer and will not constitute or form part of any agreement or form the basis of any contract no warranty, neither representation nor covenant is given or implied as to the accuracy of the whole or any part of this information All plans, drawings, amenities, facilities, etc. are subject to the approval of the respective authorities and would be changed, if necessary. The discretion remains with the developer.