







**SAAKSHI**  
CONSTRUCTIONS

 **Parvatara**  
Partners-in-Participation





**SAAKSHI**  
CONSTRUCTIONS

**Parvata**  
Owners-in-Participation









## 'B' Wing – Typical Even Floor Plan 2<sup>nd</sup>, 4<sup>th</sup>, 6<sup>th</sup> & 10<sup>th</sup> Floor

FOR ENQUIRY CALL  
72 6300 6300





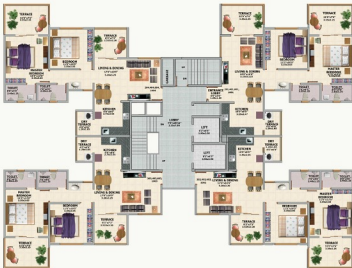
## 'C' Wing - Typical Even Floor Plan 2<sup>nd</sup>, 4<sup>th</sup>, 6<sup>th</sup> & 10<sup>th</sup> Floor

FOR ENQUIRY CALL  
72 6300 6300



## 'D' Wing - Typical Even Floor Plan 2<sup>nd</sup>, 4<sup>th</sup>, 6<sup>th</sup> & 10<sup>th</sup> Floor

FOR ENQUIRY CALL  
72 6300 6300



## 'E' Wing - Typical Even Floor Plan 2<sup>nd</sup>, 4<sup>th</sup>, 6<sup>th</sup> & 10<sup>th</sup> Floor

FOR ENQUIRY CALL  
72 6300 6300



## 'F' Wing - Typical Even Floor Plan 2<sup>nd</sup>, 4<sup>th</sup>, 6<sup>th</sup> & 10<sup>th</sup> Floor





**Strategic Location: Multiple Advantages**

- 0.5 Km  Convenience Stores
- 2.5 Km  Hospital
- 0.5 Km  Bus Stand
- 3 Km  Vegetable Market
- 1 Km  Schools & Colleges
- 3 Km  Railway Station

Site Address:  
 S. No. 74/1B/1, Adarsh Nagar, Kiwale, Pune 412101.  
 E: soakshi.infra@gmail.com

[www.soakshiconstructions.com](http://www.soakshiconstructions.com)

**For Booking, Contact 98810 94001, 72 6300 6300**