

Home is  
not a  
place,  
it's  
feeling

Located at ground zero at the heart of whitefield



Ruchira Projects is a company steeped in core values and backed by a talented team that has the skill, experience, integrity and devotion to create the homes of the future. Chic design and distinguishing architecture are traits of a Swath homes, along with greenery, superb craftsmanship and ideal locations. Focused enabling supreme Customer Satisfaction, the company swiftly responds to the aspiration of its customers .

Its Protects speaks volumes of company's committees to excellence

welcome  
to

AARNA  
By Ruchira Projects



APPROVED BY  
**REPUTED BANKS**





amenities



Swimming Pool



Children Play Area



Party Hall



Sitting Area



Modern Gym



Landscape



Theme garden



Walkway

Isometric Views



2 BHK

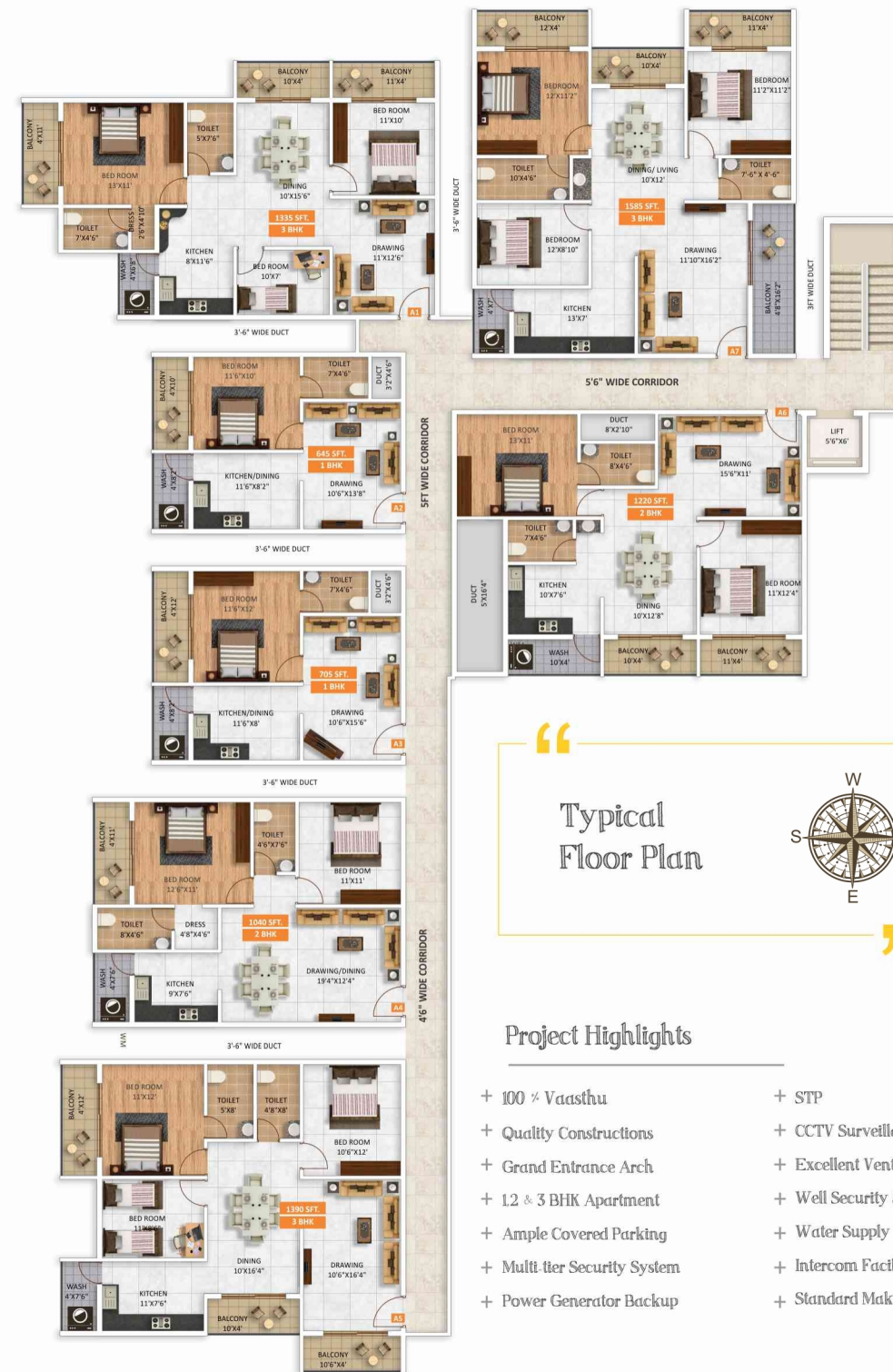


3 BHK



1 BHK

Every flat is airy,  
in every flat  
you will find  
ample light  
streaming in.



Project Highlights

- + 100% Vaasthu
- + Quality Constructions
- + Grand Entrance Arch
- + 1, 2 & 3 BHK Apartment
- + Ample Covered Parking
- + Multi-tier Security System
- + Power Generator Backup
- + STP
- + CCTV Surveillance
- + Excellent Ventilation
- + Well Security System
- + Water Supply
- + Intercom Facility
- + Standard Make Lift

**STRUCTURE**

RCC Framed structure

**PLASTERING**

Double coat sponge finish for external walls and internal walls.

**WINDOWS:**

UPVC coated sliding doors & mosquito mesh with safety grill

**DOORS**

Main Door: Teakwood Frame and designer skin moulded shutters.

Internal doors: Sall wood frame with designer skin moulded shutters

**WALLS:**

External Walls with 6" solid blocks and Internal walls 4" solid blocks

**FLOORING:**

Polished verified tiles in hall, dining & other rooms with 3" skirting all around for all rooms. Anti-skid ceramic tiles for balcony, utility & toilets.

**ELECTRIFICATION:**

Fire-resistant electrical wire with elegant modular switches of Anchor, Roma or equivalent.

**WATER SUPPLY:**

Adwquate water supply through bore well & cauvery water.

**PAINTING:**

Asian or equivalent plastic emulsion over one coats cement base wall putty & one coat arcylic putty for internal walls.

External emulsion for external walls.

Melemine polish for main door & enamel paint for other doors.

**SPECIFICATIONS****TOILETS:**

Standard make bath & sanitary fitting in each toilet. 12'x12' anti-skid finished ceramic tiles flooring and ceramic glazed finish.

**PLUMBING :**

Astral flow guard CPVC or equivalent CPVC Plumbing system.

**KITCHEN:**

Black granite kitchen platform, stainless steel sink and glazed finished tiles dado upto 2' height above platform.

**SECURITY:**

Multi-tier security system.

**COMMUNICATION:**

Intercom Facility

**GENERATOR:**

100% Generator Power backup for each flat for lighting circuits.

**LIFT:**

6 Passengers capacity lift with standard make.

## Hospitals



- Narayana Multispeciality Hospital
- Columbia Asia Hospital- Whitefield
- Manipal Multi-Specialty Hospitals
- Vydehi Hospital Bus Stop
- of Higher Medical Sciences
- Sri Sathya Sai Institute
- SVASTHA HOSPITAL
- Telerad Rxdx Healthcare Private Limited
- New Life Hospital

- Forum Value Mall
- Virginia Mall
- Inorbit Mall
- Park Square, ITPL
- Hypercity
- VR Bengaluru
- Phoenix Marketcity



## Malls

## Schools

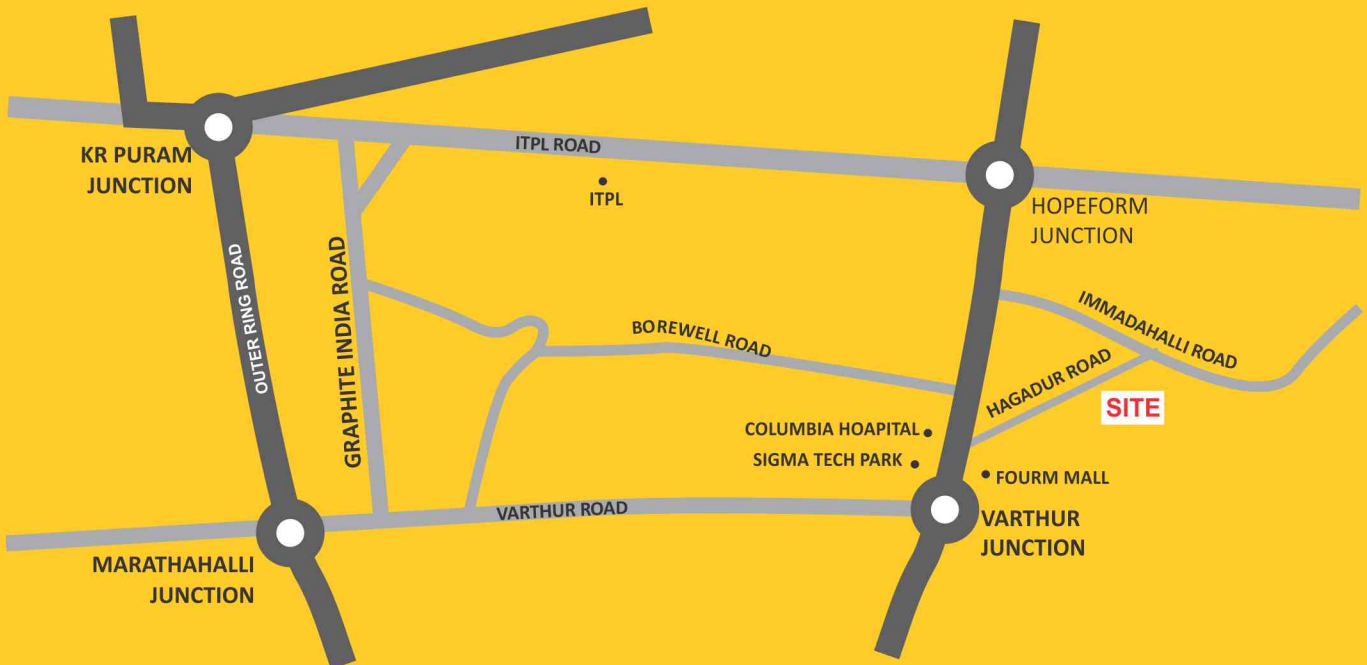


- Greenwood High Pre School
- Vibgyor High
- Vydehi School of Excellence
- Whitefield Global School
- Harvest International School
- The Deens Academy
- Euro School Whitefield
- VIVERO International Pre-School

- International Tech Park Bangalore
- Unisys SJRIT Park
- Sigma Soft Tech Park
- Unisys SJRIT Park
- Bhagini Park
- Prestige Featherlite Tech Park
- GR Tech Park
- H M Tech Park
- Kalyani Platina Tech Park
- RMZ NXT
- Bhoruka Technology Park



## IT Hub



It's strategically central to whitefield, with excellent connectivity.

Located at the threshold of fourm value mall,

The future is exciting with the neighborhoods transforming in to global city.

A growing infrastructure of shopping, restaurants, hospitals and schools make this chosen place.



### Developers

Off: #6, Sri Vyshanavi Towers,  
Opp Govt Junior College,  
Blthur, Kadugodi, Bangalore.- 560 067  
Mob: +91 99808 47600, +91 99805 49345.  
E-mail: sales@ruchira.co.in / www.ruchira.co.in

### Site Address

Hagadur Main Road,  
Whitefield, Bangalore

### Architect

FWD ARCHITECTS  
Bangalore.

*Note: This brochure is only a conceptual presentation of the project and not a legal offering.  
The promoters reserve the right to alter and make changes in elevation, specifications and plans as deemed fit.*

+91 90 329 329 53 / www.creativeethics.com