







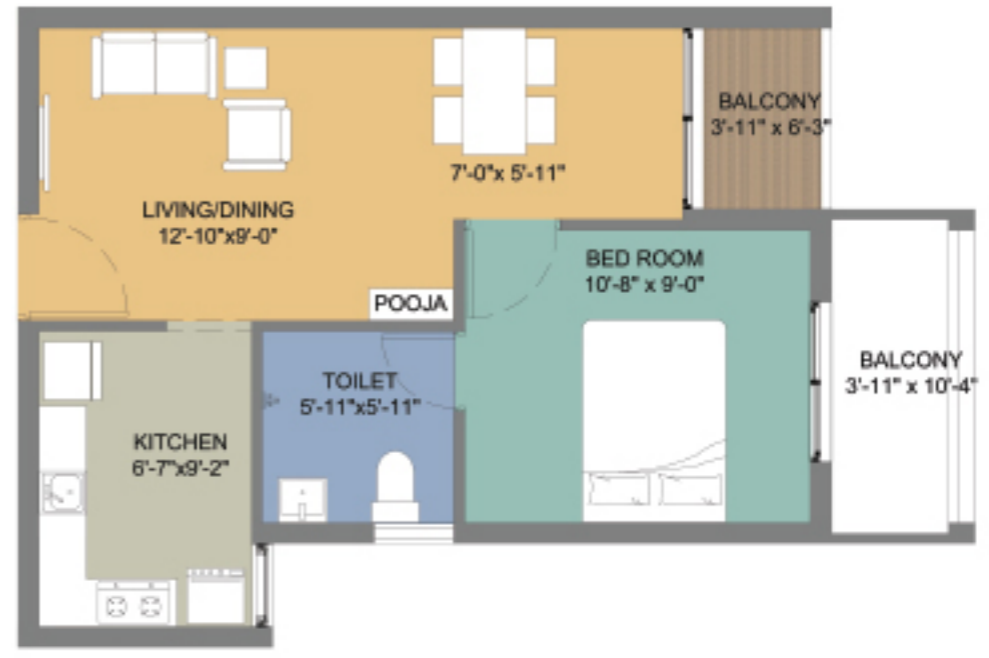








1 BHK - 430 Sq.ft



1 BHK - 595 Sq.ft

UNIT PLAN



2 BHK - 610 Sq.ft



2 BHK - 970 Sq.ft

BLOCK 1 - TYPICAL FLOOR



BLOCK 2 - FIRST FLOOR



BLOCK 3 - TYPICAL FLOOR



BLOCK 4 - 1st FLOOR



BLOCK 4 - 2nd, 3rd, 4th FLOOR



PAYMENT SCHEDULE

Booking Advance	50,000/-
Within 30 days from the date of booking	30% of the total cost (Booking Advance will be adjusted here)
On Completion of Foundation	15% of the total cost
On Completion of Stilt Floor Roof Slab	10% of the total cost
On Completion of First Floor Roof Slab	10% of the total cost
On Completion of Second Floor Roof Slab	10% of the total cost
On Completion of Third Floor Roof Slab	10% of the total cost
On Completion of Fourth Floor Roof Slab	10% of the total cost
At the time of handing over with standard finish	5% of the total cost

*Note : If any applicant desires to cancel the booking before registration, cancellation charge of Rs.25,000/- will be deducted from the booking advance.

Particulars	Details
Living/Dining Flooring	Tiles
Bedrooms Flooring	Tiles
Wall Ceiling Finish	Oil Bound Distemper / Colour Wash
Toilets Wall Finish	Tiles up to 5' Oil Bound Distemper / Colour Wash
Toilets Flooring	Tiles
Kitchen Flooring	Tiles
Platform	Marble
Kitchen Wall Finish	Tiles up to 2 feet high above Marble counter & Oil bound distemper / Colour Wash in balance area
Others	Single Bowl Stainless Steel Sink
Balcony Flooring	Tiles
Window	MS Z-Section & Glass / Alu Steel & Glass
Door Frame / Doors	Hardwood / M.S / Fiber Door frames with Flush Door / Skin Door / Fiber Door
Common Area Flooring	Marble / Pavers
Lift Lobby	Marble / Tiles
Chinaware	Standard Fitting
C.P Fittings	Standard Fitting
Electrical	ISI marked products for wiring, switches and Circuits
Security	Gated Complex

RATE PER SQ. FT (All-inclusive price)

Blocks	First Floor	Second Floor	Third Floor	Fourth Floor
Block 1, 2, 3 & 4	3830	3805	3780	3655

The above rate includes the following expenses / charges :-

- Charges for 11% Sale Deed Registration & Stamp duty.
- Charge of 2% on Agreement Registration.
- EB deposit and charges for 3 phase connection.
- 1-year maintenance charges.
- applicable GST.

Stilt Car park charges extra.

Please Note :

Any revision on the Stamp duty / Registration fee & GST if and when announced by the Government at a later date shall become applicable and payable by the allottee.

SITE PLAN



LOCATION MAP



NOT TO SCALE