



Krishna
GROUP

delivering values

Once upon
a time...



Mithila

PALLAVARAM

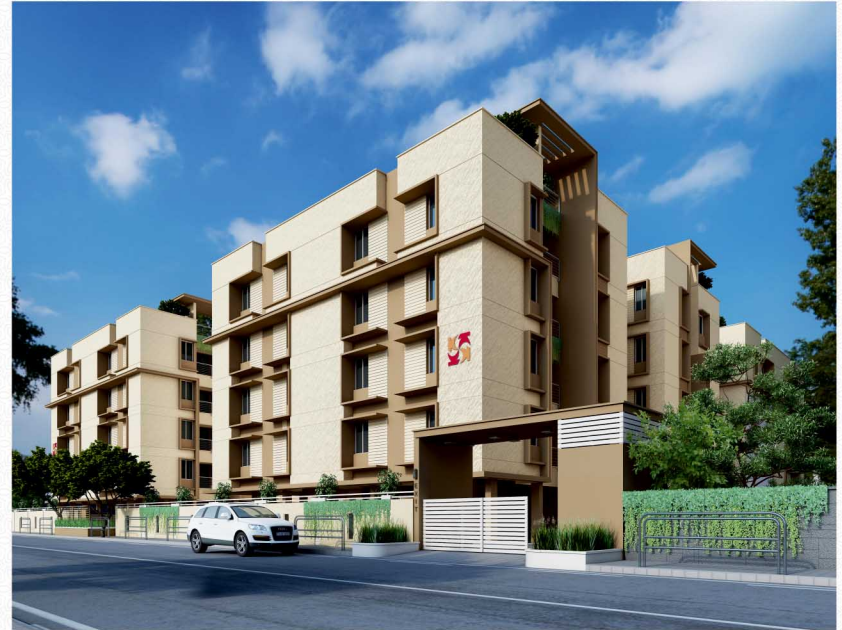
ONCE UPON A TIME

Every story has a beginning.
Let it begin.

With numerous projects adorning the cityscape, Krishna Group has always catered to the needs of the discerning home buyer. Every project is approached with an eye for detail ensuring that it delivers great value.

Mithila, yet another enticing project from the group carries with it all the essentials that an urban lifestyle could ask for. Be it the location, specifications or pricing... **Mithila** with its concrete charm is all set to script a new edition of lifestyle!

23.1 Grounds • 64 Apartments



A PORTRAYAL OF FINE LIVING

Welcome to a wholesome
living experience



Positioned at Pallavaram amidst all facilities that make a comfortable habitat, **Mithila** welcomes you to a wholesome living experience. Sprawling on 23.1 grounds embedded with 64 homes, **Mithila** is a portrayal of fine living. With sizes measuring from 1158 to 1622 square feet and variants of 2 and 3 BHK, the project is intricately designed to accommodate natural light and fresh air. The project is embedded with essential amenities that naturally compliment your address.

2 BHK: 1158 - 1205 sq.ft
3 BHK: 1591 - 1622 sq.ft



ADDING MORE TO IT

Accommodate all your lifestyle
desires



Homes at Mithila are a bouquet of charm and convenience wrapped in concrete. The project is crafted with state-of-the-art specifications and elegant finishes that spell comfort in all corners. Homes that come in different sizes and variants ensure enough space to accommodate all your lifestyle desires. Each and every room of your home is intelligently designed to cater to the needs of those who believe in more than just living spaces. Branded specifications, intricately designed spaces and luxurious finishes contribute to the many attributes of fine living.

Video Door Phone • CCTV Surveillance



AN ENTICING LIVING EXPERIENCE

Script your version of living.



At Mithila, no stone is left unturned to ensure utmost customer satisfaction. The project encompasses all essentials that make up an enticing living experience. While the closed circuit television (CCTV) surveillance ensure safety of each and every home dweller, the well equipped gymnasium complements the fitness routine of the residents. An exclusive association room and multipurpose hall contribute to the get together occasions. Welcome home to script your version of living.

**Gym • Multipurpose Hall
Association Hall • Indoor Games Room**



AN URBAN LANDSCAPE

Foreword to a whole new living
experience



A bustling residential habitat, Pallavaram tucks in it all the requirements of an urban landscape. The location is house to all major brands showcasing their best. All essentials like educational institutions, hospitals, supermarkets, entertainment zones and restaurants contribute to the happening of this region. The city with its well laid roads is accessible to and from all major parts of city. **Mithila**, strategically positioned amidst the many comforts of the region truly scripts the foreword to a whole new living experience.

- Distance to Airport - 4 kms
- Distance to Railway Station - 2.1 kms



Site & Stilt Floor Plan

Site & Typical Floor Plan



UNIT 1 (3 BHK) - Saleable Area - 1622 sq.ft.

Block A & B - Type 1

Flat Nos: 101, 201, 301, 401

Block A & B - Type 2

Flat Nos: 102, 202, 302, 402

UNIT 2 (3 BHK) - Saleable Area - 1622 sq.ft.



UNIT 3 (3 BHK) - Saleable Area - 1591 sq.ft.

Block A & B - Type 3
Flat Nos: 103, 203, 303, 403

Block A & B - Type 4
Flat Nos: 104, 204, 304, 404

UNIT 4 (3 BHK) - Saleable Area - 1603 sq.ft.



UNIT 1 (2 BHK) - Saleable Area - 1163 sq.ft.

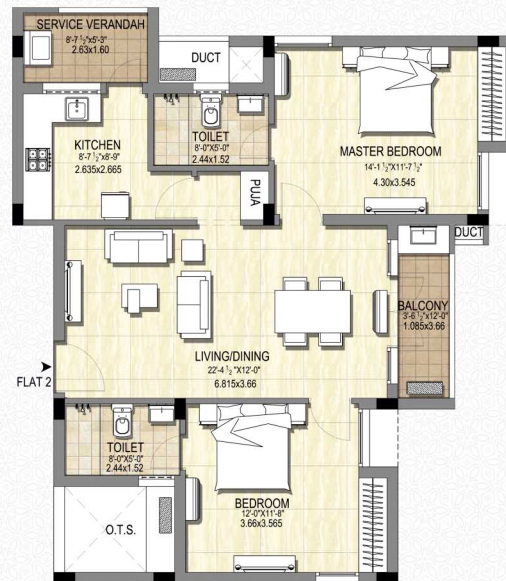
Block C - Type 1

Flat Nos: 101, 201, 301, 401

Block C - Type 2

Flat Nos: 102, 202, 302, 402

UNIT 2 (2 BHK) - Saleable Area - 1158 sq.ft.



UNIT 3 (3 BHK) - Saleable Area - 1591 sq.ft.

Block C - Type 3

Flat Nos: 103, 203, 303, 403

Block C - Type 4

Flat Nos: 104, 204, 304, 404

UNIT 4 (3 BHK) - Saleable Area - 1603 sq.ft.



UNIT 1 (2 BHK) - Saleable Area - 1192 sq.ft.

Block D - Type 1

Flat Nos: 101, 201, 301, 401

Block D - Type 2

Flat Nos: 102, 202, 302, 402

UNIT 2 (2 BHK) - Saleable Area - 1185 sq.ft.



UNIT 3 (2 BHK) - Saleable Area - 1205 sq.ft.

Block D - Type 3

Flat Nos: 103, 203, 303, 403

Block D - Type 4

Flat Nos: 104, 204, 304, 404

UNIT 4 (2 BHK) - Saleable Area - 1202 sq.ft.





Bird's Eye View

64 APPARTMENTS
2 & 3 BHK
Dharga Road, Pallavaram

2 BHK: 1158 - 1205 sq.ft
3 BHK: 1591 - 1622 sq.ft



Minimum Indicative Specifications

FOUNDATIONS

- Footings shall be as per Structural Drawings.

STRUCTURE

- R.C.C Framed Structure with Columns, Beams and Slabs.

WALLS

- External Walls of burnt Clay Bricks / Cement Blocks with Cement Mortar.
- Partition Walls in burnt Clay Bricks / Cement Blocks with Cement Mortar.

PLASTERING

- All Internal and External Walls plastered in Cement Mortar.

FLOORING

- 2 X 2 Vitrified Tiles for Living, Dining, Bedrooms, Kitchen and Balcony.

PAINTING

- Interiors: Emulsion Premium Paint with Two Coat Asian Putty.
- Exteriors: Texture with Asian / Berger / Dulux all Weather Coat Paints.

DOORS

- Teak Wood Frame and Panel door for Main Entrance.
- Teak Wood Frame with laminated finish flush doors for all the rooms.

WINDOWS

- Balcony: UPVC French doors with Glass.
- Windows: UPVC frames and shutters with open-able Glass.
- Utility: Fixed Painted MS Grill.

KITCHEN

- Dado of 2' above Kitchen platform in Ceramic Stone finish / Glazed tiles.
- Provision for Water purification system in Kitchen.
- Provision for Washing Machine in Service Area.

BATHROOMS

- Stone finish / Glazed designer Ceramic / Porcelain Wall Tiles up to ceiling height.
- Matt finish Anti-Skid Ceramic / Porcelain Tile flooring.
- Paryware Wall Mounted Closets for all bathrooms.
- Wash Basins with Jaguar CP fittings.
- Provision for Geyser and Exhaust Fan.

ELECTRICAL

- Three phase supply with independent E.B meters for each apartment.
- All internal conduits with PVC India Tubes make.
- Modular Switches will be provided.
- Television / Telephone points in Living and Bedrooms.
- Power Back up for each apartment, except for Air Conditioner and Geyser for 2 BHK-1 KVA and 3 BHK-1.5 KVA
- Wiring Provision with Copper Piping & drain pipes for connecting Split AC's in Bedrooms & Living room.

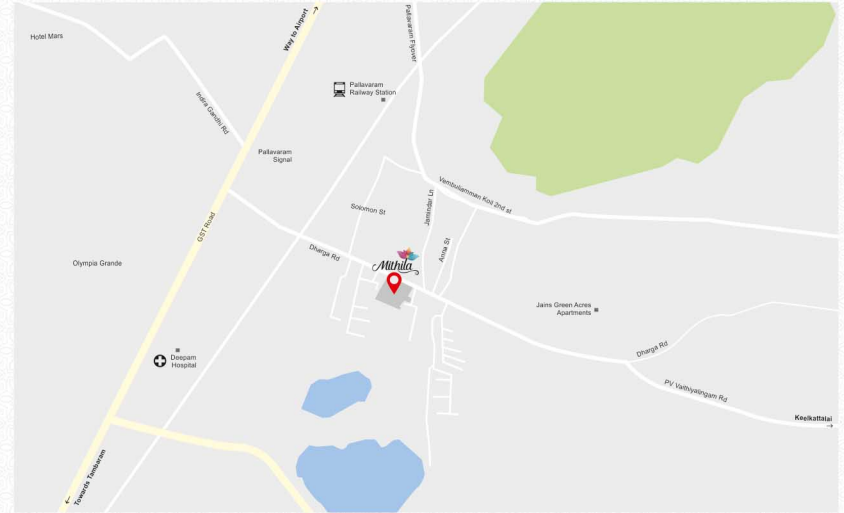
Essentials & Amenities

- Common Area Flooring - Marble / Granite
- Staircase - Marble / Granite
- Inter-Lock Paving Blocks for driveways
- Anti-Termite Treatment
- Common Toilet for Servants / Drivers
- Covered Car Park
- Video Door Phone Security System with Access Cards
- Association Room
- Gymnasium
- Indoor Games - Table Tennis, Carrom & Chess
- Multipurpose Hall
- Water Treatment Plant
- 1 Johnson Lift (10 Passengers Capacity) with Automatic Rescue Device (ARD) in each block.
- Power Back up for the Common Areas, Lifts and Water Pumps.
- Closed Circuit Television (CCTV) surveillance, one camera will be provided at entry gate, exit gate, facing the lobby entrance of each block, entrance of association room, gym and multipurpose hall.



Breezing through our 3rd decade of building journey, Krishna Constructions has been a part of more than one thousand families who have joined the Krishna residency brigade, since 1990. Clear titles, transparent business process, genuine apartments, economic pricing, enchanting amenities & on time delivery are some of the best reasons pillared over our customers' continued support. Our Mission is to offer affordable luxury properties to our customers, with the best of amenities, designs, comforts and satisfaction pinned in contemporary architecture with futuristic building technology.

Route Map





Old #21, New #28, Cathedral Garden Road, Nungambakkam, Chennai - 600 034. India.

T +91 44 2822 4455 / 5544 M sales@krishnaconstructions.com W www.krishnagroup.ventures

Disclaimer: The furniture / images shown in the brochure are only for the purpose of illustrating a possible layout and do not form a part of the offering. Information herein is subject to change as and when required. Krishna Constructions reserves the right to change, alter, add or delete any specification and other details mentioned herein without prior permission or notice.