

Life's new moments
of happiness.



TRITAN
MEADOWS
THE ULTIMATE INDULGENCE

SANPADA, NAVI MUMBAI



*Cherish. Admire. Relive.
Life's new moments of togetherness.*

The Project

Life at Tritan Meadows offers an extraordinary living experience. Deep thoughts have been given in the designing of every nook and corner at Tritan Meadows that comes with the best blend of meticulously designed living spaces and luxury. Each area of your home has its own very special aura, from awe to enchanting, to delight. Now you can spend your lifetime with your loved ones and discover new moments of togetherness at Tritan Meadows.

- *Clear Title CIDCO Tender Plot.*
- *G+14 Storeyed Magnificent edifice*
- *Signature styled 2 & 3 BHK Flats*
- *Premium commercial spaces*
- *Grand entrance lobby cum Atrium designed with Italian Marble*
- *High Speed Automatic Elevators with Automatic Rescue device*
- *Intercom & Video Door Phone in each Apartment*
- *CCTV surveillance system*
- *Adequate Car Parking space on Ground & First floor*
- *24x7 Generator backup for Elevators & Common area*
- *Gymnasium, Landscaped Garden & Children Play area*
- *Elegant Building Entrance Gate*
- *Loans Available by Major Financial Institutions & Banks.*





The Location

One of the most blessed location of Navi Mumbai, Sanpada enjoys proximity to various residential and commercials developments and share a rich living experience. It is a preferred destination for setting up dream house for many due to excellent connectivity. Retail and Commercial developments, Entertainment Avenues, Shopping Centres, Hospitals, Restaurants, Sanpada has a seductive appeal and glitters of a great place.

- Located amidst the serene environs of Sanpada
- Sanpada is an upmarket residential as well as a residential township in Navi Mumbai
- Well connected to Sanpada railway station & Juinagar Railway station
- Connectivity to Sion - Panvel Highway, Thane Belapur Road & Palm Beach Road
- Vashi Railway station - 3km
- MGM super speciality Hospital - 4km
- Schools - Sadhu Vaswani International School, Seventh Day Adventist High School, Vivekanand School & Ryan International School nearby
- Colleges - Sanpada College of Commerce and Technology, VES Indira College of Career Studies, Western Junior College & Oriental College of Pharmacy
- Inorbit, Centre One and Raghuleela Malls near Vashi railway station are 10-minute drive from Sanpada.

The Specification

FLOORING

- 32" X 32" Vitrified flooring in all rooms
- Designer flooring in all toilets

KITCHEN

- Granite Kitchen platform with Service Platform
- Designer glazed tiles upto beam height above platform
- Provision for water purifier, Mixer, Exhaust Fan, Refrigerator & Microwave point

DOORS & WINDOWS

- Decorative doors with wooden frame
- FRP / Hardner doors in Toilets
- UPVC sliding windows

ELECTRIFICATION

- Concealed copper wiring of premium make with circuit breaker ELCB / MCB's
- Adequate electrical points in all rooms.
- ISI modular switches of premium make.

WALLS AND PAINTS

- Acrylic finish paints for internal walls.
- All weather proof Acrylic paints for external walls.
- Gypsum finished internal walls.

TOILETS

- Designer glazed tiles full height.
- Sanitary wares of premium make.
- Premium Quality C.P. Fittings.
- Provision for Exhaust Fan & Geyser point.

OTHERS

- Special Drying / Utility Space
- Solar heater connection in common bathroom

GENERAL

- Special water proofing treatment with China Chips flooring on terrace floor.
- Chequer Tiles finish for Parking Area
- Water Tank with adequate storage Capacity



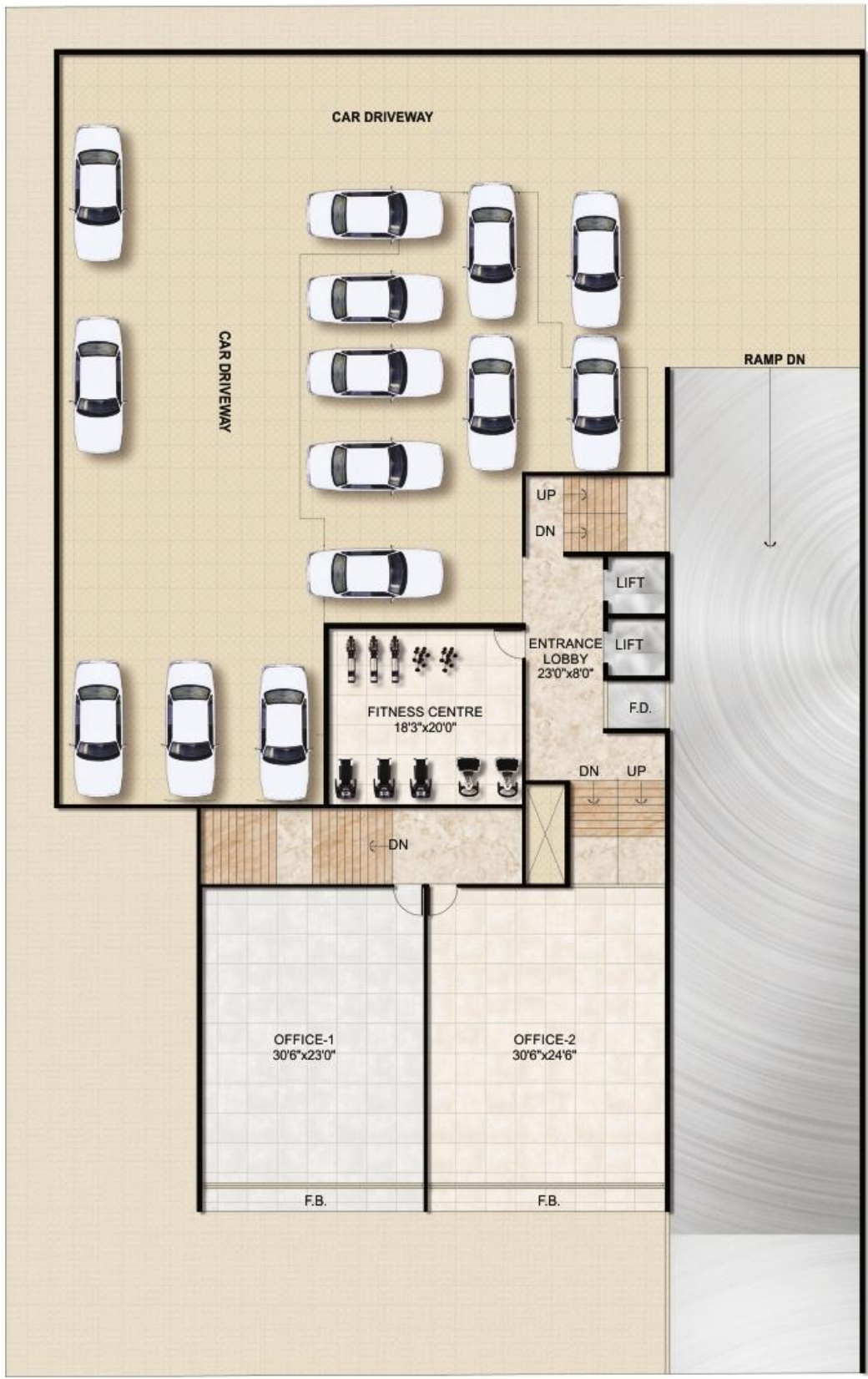
SEA VIEW



15M WIDE ROAD



SEA VIEW



SECOND FLOOR PLAN



SEA VIEW



15M WIDE ROAD

TYPICAL FLOOR PLAN

 (3, 5, 7, 9, 11, 13)



SEA VIEW



15M WIDE ROAD

TYPICAL FLOOR PLAN
(4, 6, 8, 10, 12)



SEA VIEW



402
602
802
1002
1202

401
601
801
1001
1201

FIRE RESCUE BALCONY
AT MIDLANDING OF
8TH & 9TH,
10TH & 11TH,
12TH & 13TH FLOOR

15M WIDE ROAD

FOURTEENTH FLOOR PLAN



SEA VIEW



15M WIDE ROAD



A VENTURE BY



For Booking Contact :
8652866666 / 9029064040

Architect : ATUL PATEL ARCHITECT

RCC Consultant : A. G. GOKHALE

Legal Advisor : AJEET SINGH & ASSOCIATES

The information contained in this brochure is indicative of the kind of development proposed. It is prepared and issued in good faith and is for guidance only. It does not constitute part of any offer or contract. It is subject to the approval of the authorities. In the interest of the continuing improvement of the project and or any changes as suggested by the authorities the developers reserve the right to alter the layout, plans, specifications or features of the building without any prior notice or obligation to any buyer's in the project. The photographs and the artists impressions in the brochure are for reference only.