

MAJESTIC DELIGHT











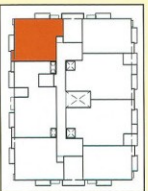




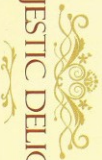




KEY PLAN

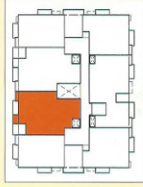


MAJESTIC DELIGHT

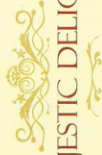


FLOOR PLANS

2 BHK - TYPE A, TYPICAL LAYOUT PLAN (SUPER AREA = 985 SQFT)



KEY PLAN



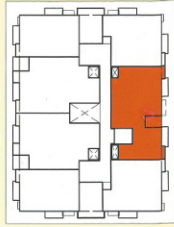
MAJESTIC DELIGHT

FLOOR PLANS

2 BHK - TYPE B, TYPICAL LAYOUT PLAN (SUPER AREA = 1053 SQFT)



KEY PLAN




MAJESTIC DELIGHT




Particulars	Details
Living/Dining Flooring	Tiles
Bedrooms Flooring	Tiles
Wall Ceiling Finish	Oil Bound Distemper / Colour Wash
Toilets Wall Finish	Tiles up to 5' Oil Bound Distemper / Colour Wash
Toilets Flooring	Tiles
Kitchen Flooring	Tiles
Platform	Marble
Kitchen Wall Finish	Tiles up to 2 feet high above Marble counter & Oil bound distemper / Colour Wash in balance area
Others	Single Bowl Stainless Steel Sink
Balcony Flooring	Tiles
Window	MS Z-Section & Glass / Alu Steel & Glass
Door Frame / Doors	Hardwood / M.S / Fiber Door frames with Flush Door / Skin Door / Fiber Door
Common Area Flooring	Marble / Pavers
Lift Lobby	Marble / Tiles
Chinaware	Standard Fitting
C.P Fittings	Standard Fitting
Electrical	ISI marked products for wiring, switches and Circuits
Security	Gated Complex

MAJESTIC DELIGHT

Magestic Delight is the a luxurious low-rise project with a total area of around 11,000 sqft, with ample of open area. The project is loaded with all modern amenities like Gym, Jogging track, 24X7 3-Tier Security. Our flawlessly planned and perfectly built homes in New Gomti Nagar, Near Amity University, Lucknow, well connected from Faizabad Road, Kisan Path & Shaheed Path & in close proximity to Gomti Nagar, IT City, International Cricket Stadium and numerous parks. Central and State institutions and Super Specialty Hospital (Sahara Hospital/ Medanta Awadh).

DISTANCE FROM IMPORTANT PLACES



500 meters From **Malhaur Railway Station**

Proposed Metro Station & Shopping Mall in **neighbourhood**



International Stadium is within 15 mins reach

20 mins drive from **Charbagh Railway Station**



10 mins Drive from **Lucknow High Court**

Walking distance - 300 meters from **Amity University**



5 mins distance from **Sahara Hospital**

20 mins distance from proposed **IT City**



10 mins drive from **Vibhuti Khand** which includes all the Government and Private Head/Regional offices

5 mins drive from **Court of Consumer Forum**

