

## GLOBAL CITY | VIRAR (W)



### BACHRAJ DEVELOPERS

**Site Address:** Bachraj Landmark, Avenue L-3, Opp. Club House, Global City, Virar West.

**Admin. Off.:** Bachraj Paradise, Avenue A-3 (B), Global City, Virar West.

**Corp. Off.:** 1st Floor, D Block, Shri Sitaram Sadan, 276/286 Shamaldas Gandhi Marg, Princess Street, Mumbai 400 002.

**Contact No.:** 0250 - 6054333, 6050507

[www.bachraj.com](http://www.bachraj.com)

**Designer Architect:** Kaushik Patel Architects | **Architect and RCC Consultant:** Shah & Gattani | **Solicitor:** M.T. Miskita

Note: All the plans, drawings, amenities, facilities etc. are subject to approval of the respective authorities and would be subject to changes if necessary.  
The decision remains with the developers. All the plans and pictures used are rendered according to the artist's perception.



## VIRAR'S NEWEST LANDMARK IS BORN







**bachraj™**  
**LANDMARK**  
GLOBAL CITY, VIRAR (W)

Live smart, live proud, elevate your lifestyle to the next level. Owning a home is a matter of pride and what better way than to move into Virar's newest icon, Bachraj Landmark. Nestled in the heart of the iconic Global City, Bachraj Landmark features 6 contemporary high-rise wings of 14 stories each. Presenting impeccably designed 1BHK and 2BHK spaces to give room to your dreams.

*Aerial View*





Front Elevation





Global City, Virar - Bird's Eye View



Yazoo Park



Club House





Night View

## FIND MORE, SEARCH LESS AROUND YOUR LANDMARK

Bachraj Landmark is ideally located, within walking distance of most common amenities in Global City.

- Yazoo amusement park spread over 12 acres
- Rustomjee International School
- Club House spread across 1 lakh sq.ft.
- Colleges
- Landscaped Gardens
- Shopping Centres
- Olympic sized Swimming Pool & Tennis Courts
- Two minute walk from upcoming Jain temple and Siddhivinayak temple



Siddhivinayak Temple



Rustomjee School



Gymnasium



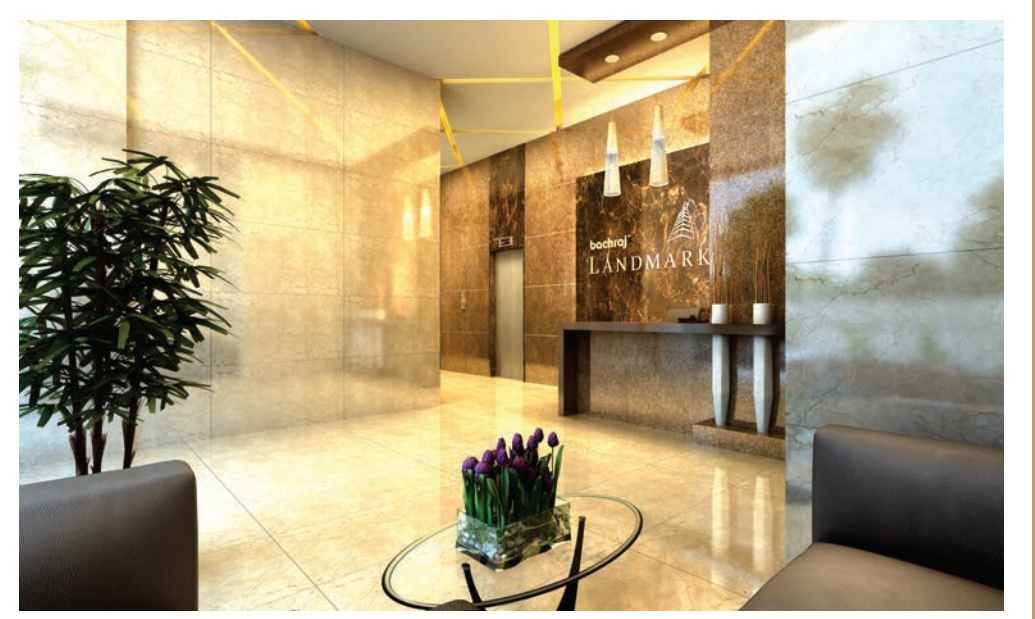
Shopping Center





- Residential towers of 6 wings, 14 storied each
- Two lifts per wing
- Spacious 1BHK & 2BHK flats and shops
- State of the art children's play zone & raised garden
- Ample parking below raised garden
- Decorative entrance lobby

**GRAND LIVING  
AT THE LANDMARK**



*Images of: Podium Garden with Children's Play Zone & Main Lobby*



**LIVING ROOM & BED ROOM**

- Mirror finished vitrified flooring
- Decorative entrance door with latest locking system
- Smooth plastered and paint finishes
- Powder coated anodized/aluminium sliding windows
- Granite window sils

**BATHROOM**

- Exquisitely Designed bathrooms
- Premium sanitary fitting
- Quality CP fitting

**KITCHEN**

- Kitchen with granite platform
- Stainless steel sink with service platform
- Ceramic tiles upto 2 feet height

**SECURITY & SAFETY**

- 24x7 Security
- Power backup for lifts & common areas

**A LANDMARK  
 OF YOUR STYLE**



*Images of: Living Room, Bedroom & Master Toilet*



# 1 BHK APARTMENT

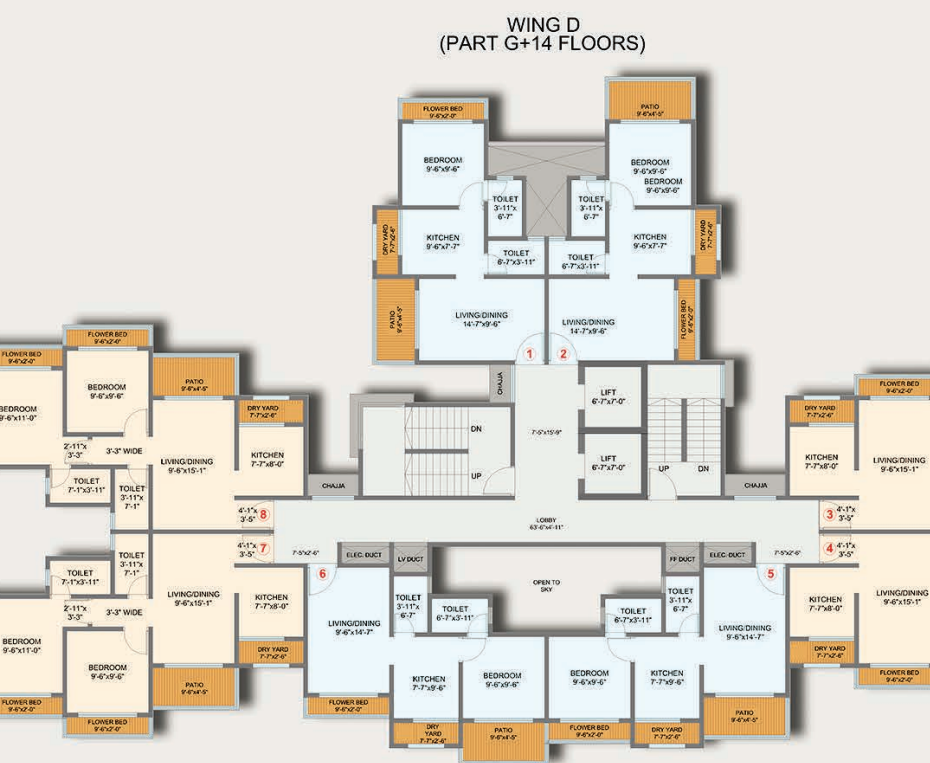
# 2 BHK APARTMENT

12.00M WIDE INTERNAL PAVED AREA

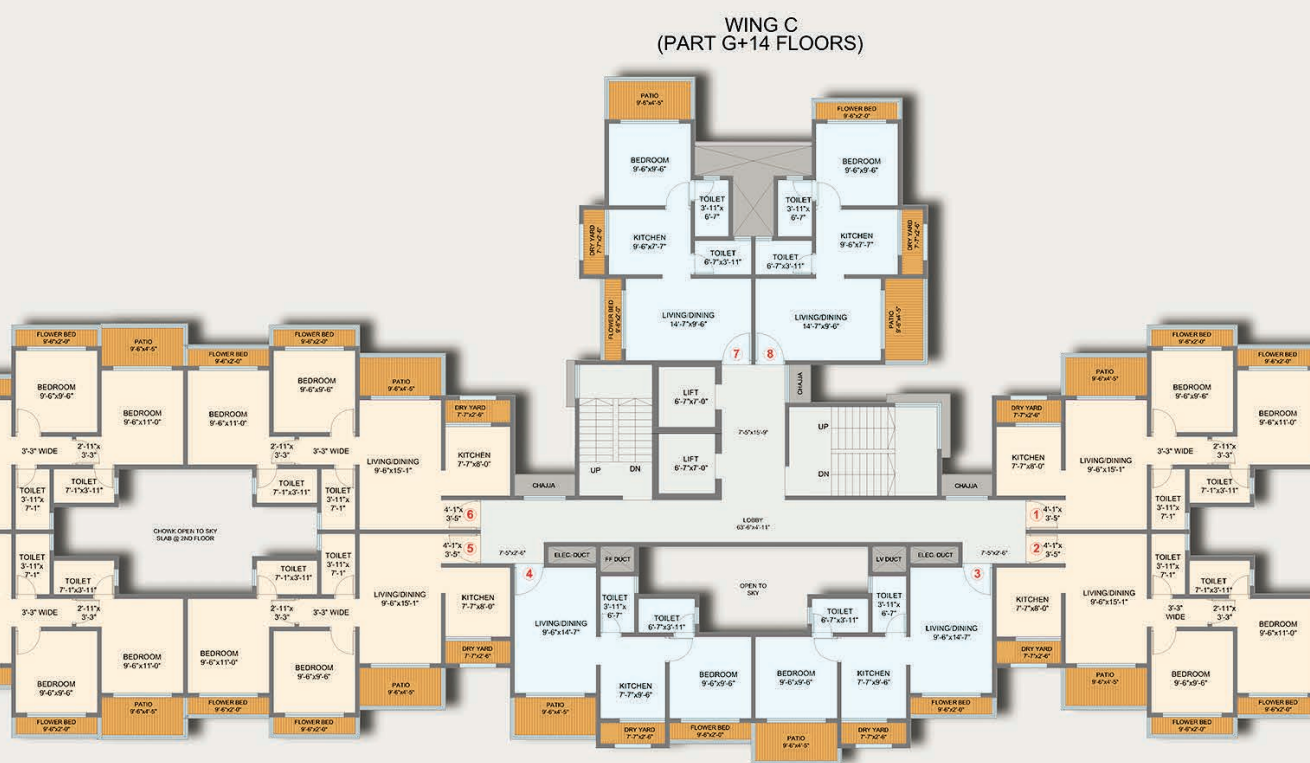
12.00M WIDE INTERNAL PAVED AREA



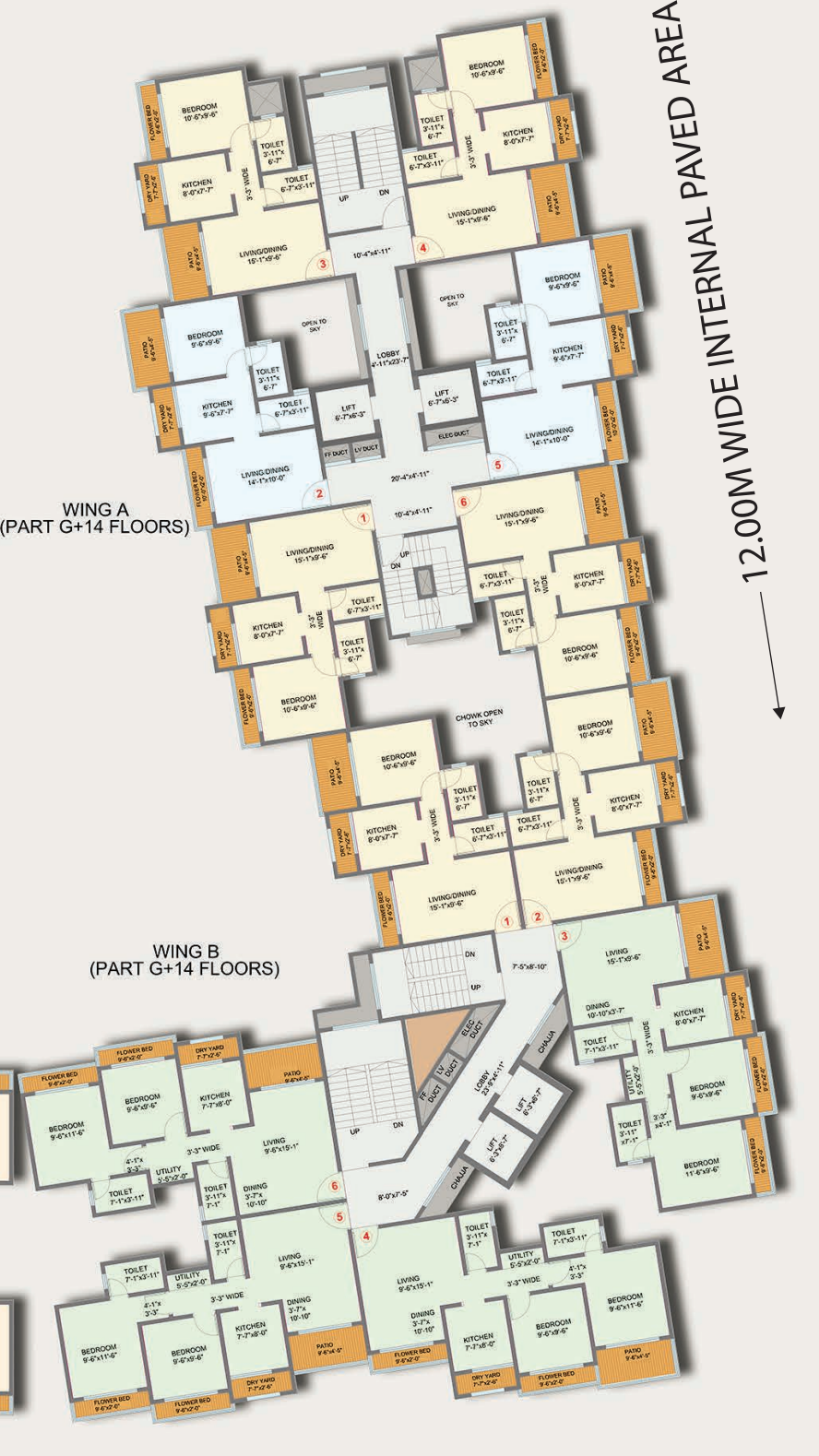
WING F (PART G+14 FLOORS)



WING D (PART G+14 FLOORS)



WING C (PART G+14 FLOORS)



WING A (PART G+14 FLOORS)

WING B (PART G+14 FLOORS)

565 sqft 510 sqft 362 sqft 389 sqft

24.00M WIDE ROAD

FLOOR PLAN