



**ESSEN GROUP**  
Since 1974




**ESSEN SILVER OAKS**

« HOMES BY THE OCEAN »

# ESSEN SILVER OAKS.....Experience life at Bogmalo



  
ESSEN SILVER OAKS

 **ESSEN GROUP**  
Since 1998

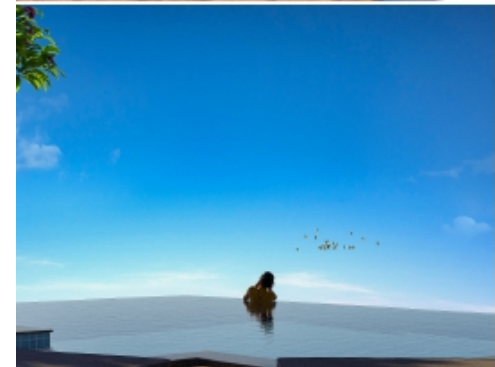
A project nestled amidst lush greenery and by the ocean. It is not just a place you can call home, but a lifestyle which promises you a slice of happiness in your life's pursuits. It is tailor-made to create that vital ingredient called home, because there is no place like having a better home, which resonates peace, serenity & happiness.

# AERIAL VIEW



# INFINITY POOL







## 2BHK TYPE I



1<sup>st</sup> Floor to 6<sup>th</sup> Floor Plan



U. Ground Floor Plan







## 2BHK TYPE II



1<sup>st</sup> Floor to 6<sup>th</sup> Floor Plan

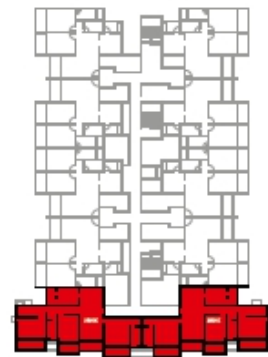


U. Ground Floor Plan





# 3BHK

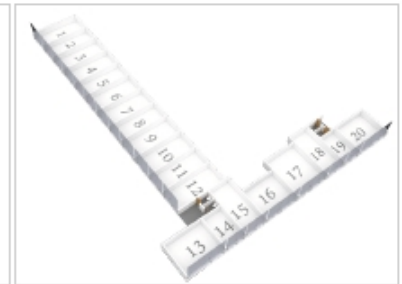


1<sup>st</sup> Floor to 6<sup>th</sup> Floor Plan





## State-of-the-art common spaces...



## FEATURES

- Rooftop infinity swimming pool
- Clubhouse with well-equipped gymnasium
- Dedicated rooftop crossfit area
- Toughened glass stainless steel railing
- CCTV installed at strategic locations
- Aesthetically designed building elevation
- Passenger elevator and passenger goods lift
- Road-side facing shops with ample parking
- Designated parking space for two wheelers
- Ample provision for four-wheeler parking
- Well compartmentalized basement parking with direction signage for hassle-free parking
- Granite or vitrified tiles flooring for staircases, risers and landings
- Modular kitchen without electrical appliances
- Energy-saving LED lighting in all common areas
- Sewage treatment plant
- Grey waterline plumbing for flushing system
- Designated dining area for all flats
- Video door-phone for all flats/ intercom facility provision for all flats
- Fire protection system

## SPECIFICATIONS

- RCC-framed structure designed to withstand wind and seismic loads
- External walls of laterite stone/ AAC blocks and internal walls of AAC block/ Fly-ash bricks
- Waterproofing treatment for roof slab and toilet slab
- Vitrified tiles of size 800mm x 800mm
- Non-skid tiles for bathroom floor and all balconies
- Glazed ceramic tiles in washroom dado
- Kitchen dado tiles of glazed ceramic upto height of 60cm from top of platform
- Reputed plumbing fittings & pipes of reputed brands & set for plumbing works
- Modular electrical switches and copper wires of reputed brands
- UPVC/Powder-coated windows, sliding doors & ventilators.
- HDPE/Laminated/ WPC doors for main and internal doors
- External walls and ceiling to be painted with superior quality emulsion paint
- Allocation of telephone point in the living room
- Provision for cable in living room and master bedrooms





## Essen Pedigree

Essen Group has carved a name for itself in the real estate sector because we believe in creating not just structures but imposing landmarks. We have a flair for creating magnificent architectures which comprise of infrastructure projects and tailor-made residential complexes where families have been living happily for decades.

# ESSEN SILVER OAKS



10 Mins drive



5 Mins drive



5 Mins drive




2 Mins drive



10 Mins drive




  
**ESSEN SILVER OAKS**

  
**ESSEN GROUP**  
 Since 1974

  
**ESSEN SILVER OAKS**  
 HOMES BY THE OCEAN  
 Bogmalo Village, Goa.

  
**ESSEN GROUP**  
 Since 1974

  
**Office Address** ESSEN EMPIRE, 4<sup>TH</sup> & 5<sup>TH</sup> FLOOR  
 OPP. KADAMBA BUS STAND,  
 MUNDVEL, VASCO, GOA

**TO KNOW MORE**

 **+91 982333-9630**  
 **0832 - 2510029**  
 **sales@essengroup.info**